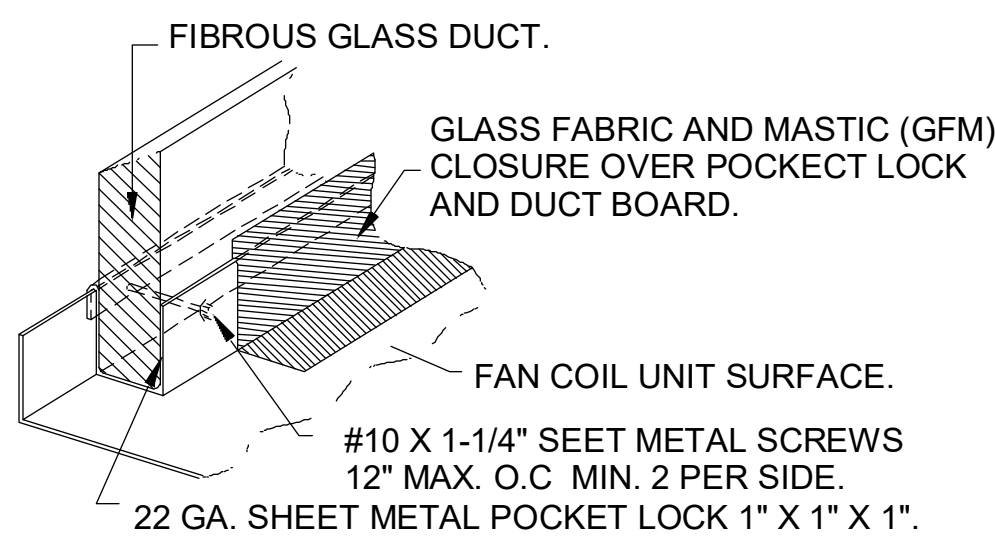
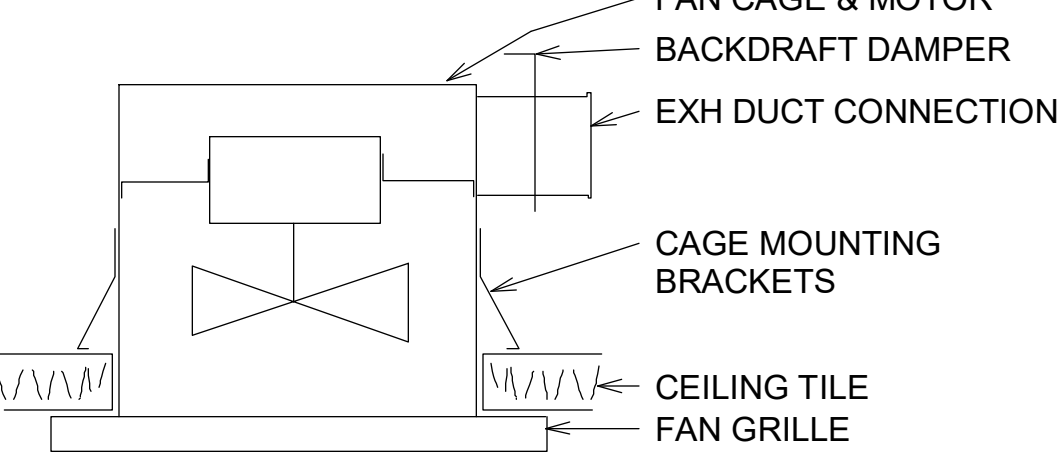


Mechanical Notes

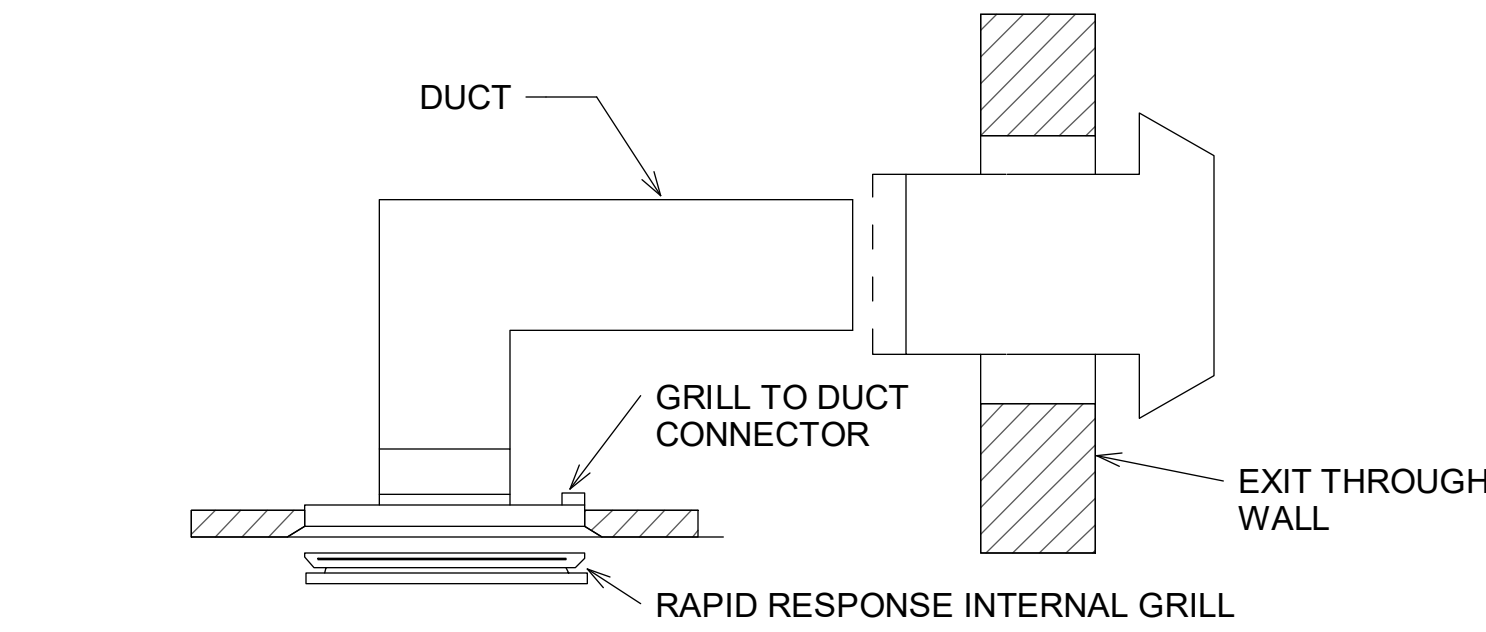
1. THE SCOPE OF WORK IS TO PROVIDE DRAWINGS AND SPECS FOR THE INSTALLATION OF MECHANICAL SYSTEMS, TO THE EXTENT SHOWN IN THESE PLANS, IN COMPLIANCE WITH THE FLORIDA BUILDING CODE, NFPA, AND ALL OTHER APPLICABLE STANDARDS AND GOVERNING AUTHORITIES.
2. THE CONTRACTOR SHALL BE RESPONSIBLE FOR VERIFYING ALL EQUIPMENT DESIGN REQUIREMENTS (I.E., VOLTAGE, WATER, DRAINS, GAS CONNECTIONS, ETC.) WHEN REQUIRED FOR THE CORRECT/APPROVED OPERATION, THE EQUIPMENT SHALL BE FURNISHED WITH ALL NECESSARY ACCESSORIES WHETHER CONSIDERED OPTIONAL OR STANDARD BY THE MANUFACTURER.
3. WARRANTY: PROVIDE LABOR AND MATERIALS TO REPAIR OR REPLACE DEFECTIVE PARTS AND MATERIALS REQUIRED FOR ONE-YEAR AFTER SUBSTANTIAL COMPLETION OR OWNER ACCEPTANCE OF COMPLETED PROJECT.
4. DRAWINGS FOR HVAC WORK ARE DIAGRAMMATIC, SHOWING THE GENERAL LOCATION, TYPE, LAYOUT, AND EQUIPMENT REQUIRED. THE DRAWINGS SHALL NOT BE SCALED FOR EXACT MEASUREMENTS. REFER TO MANUFACTURER FOR INSTALLATION REQUIREMENTS AS REQUIRED. WORK SHALL BE IN ACCORDANCE WITH THE LOCAL BUILDING CODE, LOCAL ORDINANCES AND STANDARDS AND SUBJECT TO INSPECTIONS.
5. COORDINATE WITH THE WORK OF OTHER SECTIONS, EQUIPMENT FURNISHED BY OTHERS, REQUIREMENTS OF THE LANDLORD, AND WITH THE CONSTRAINTS OF THE EXISTING CONDITIONS OF THE PROJECT SITE.
6. ALL EQUIPMENT AND MATERIALS SHALL BE NEW, FREE FROM DEFECTS AND WITH MANUFACTURER'S WARRANTY.
7. THE CONTRACTOR SHALL PROVIDE ALL LABOR, MATERIALS, EQUIPMENT, ACCESS PANELS, CONTROL SYSTEMS, DEVICES, PERMITS AND SERVICES NECESSARY FOR FURNISHING AND INSTALLING OF COMPLETE AND SERVICEABLE MECHANICAL SYSTEMS.



1 AHU DUCT CONNECTION DETAIL
N.T.S.



2 CONDENSATE DRAIN TRAP DETAIL
N.T.S.



4 TYPICAL EXHAUST FAN THROUGH
ROOF INSTALLATION DETAIL
N.T.S.

A/C SCHEDULE	
SINGLE CIRCUIT SPLIT SYSTEM (208/1/60)	
UNIT NUMBER	CU/AHU-1,2
AREA SERVED	SEE FLR. PLAN
MODEL NAME	RA1660AJ/RH1V6024
NOM TONS	5.0
SYSTEM SEER	14.5
CFM	1890 @ .5"
REFRIGERANT	R-410A
AMBIENT	95
CAP (MBH) @ 80/67 (TC/SC)	57.5/43.6
CAP (MBH) @ 75/62 (TC/SC)	53.2/44.3
CONDENSING UNIT DATA	
COMPRESSOR QTY/STAGES	1/1
COMPRESSOR 1 RLA-LRA	20.8-127.1
COND. FAN FLA-HP	1.52-1/4
MCA	27.5
MOCP	40
DIMENSIONS (LxWxH) (IN)	32x32x32
STD WEIGHT (LBS)	197
MANUFATURER	RHEEM
AIR HANDLER DATA	
EVAP. FAN FLAN-BHP	6.0-3/4
HEATER KW	10.0
MCA	53.8
MOCP	60
DIMENSIONS (LxWxH) (IN)	22x22x60
STD WEIGHT (LBS)	201
SUCTION LINE	1-1/8
LIQUID LINE	3/8
MANUFATURER	RHEEM

Mechecanical scope of work

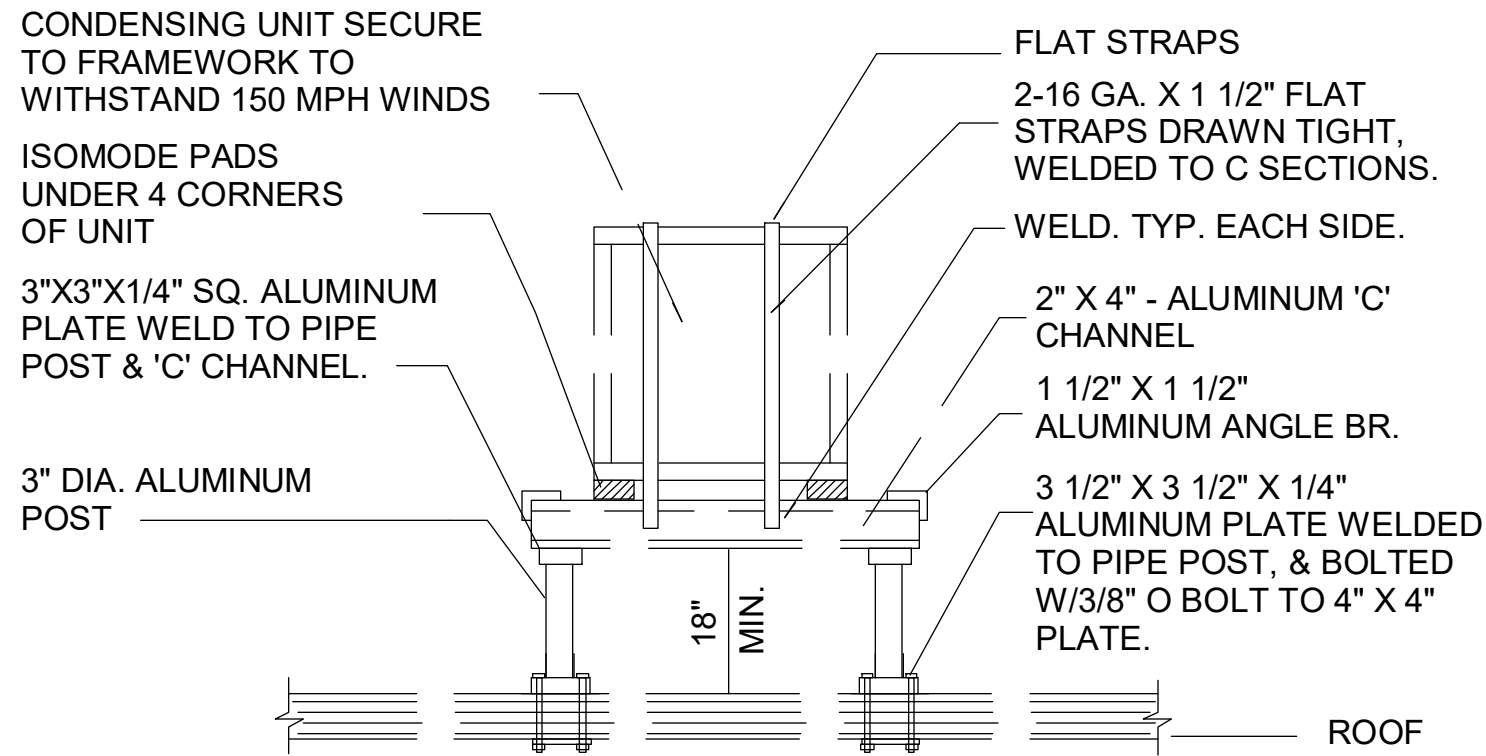
LEGALIZATION of new central split A/C in first floor as shown in plan. New duct installation in first floor for new spaces. New damper connection in first floor as shown in plans. New exhaust fans in first and second floor as shown in plans. New RTU A/C systems installation for second floor as shown in plan. Contractor to verify existing conditions on site before starting any work.

Applicable code

FBCM-2023

8th edition

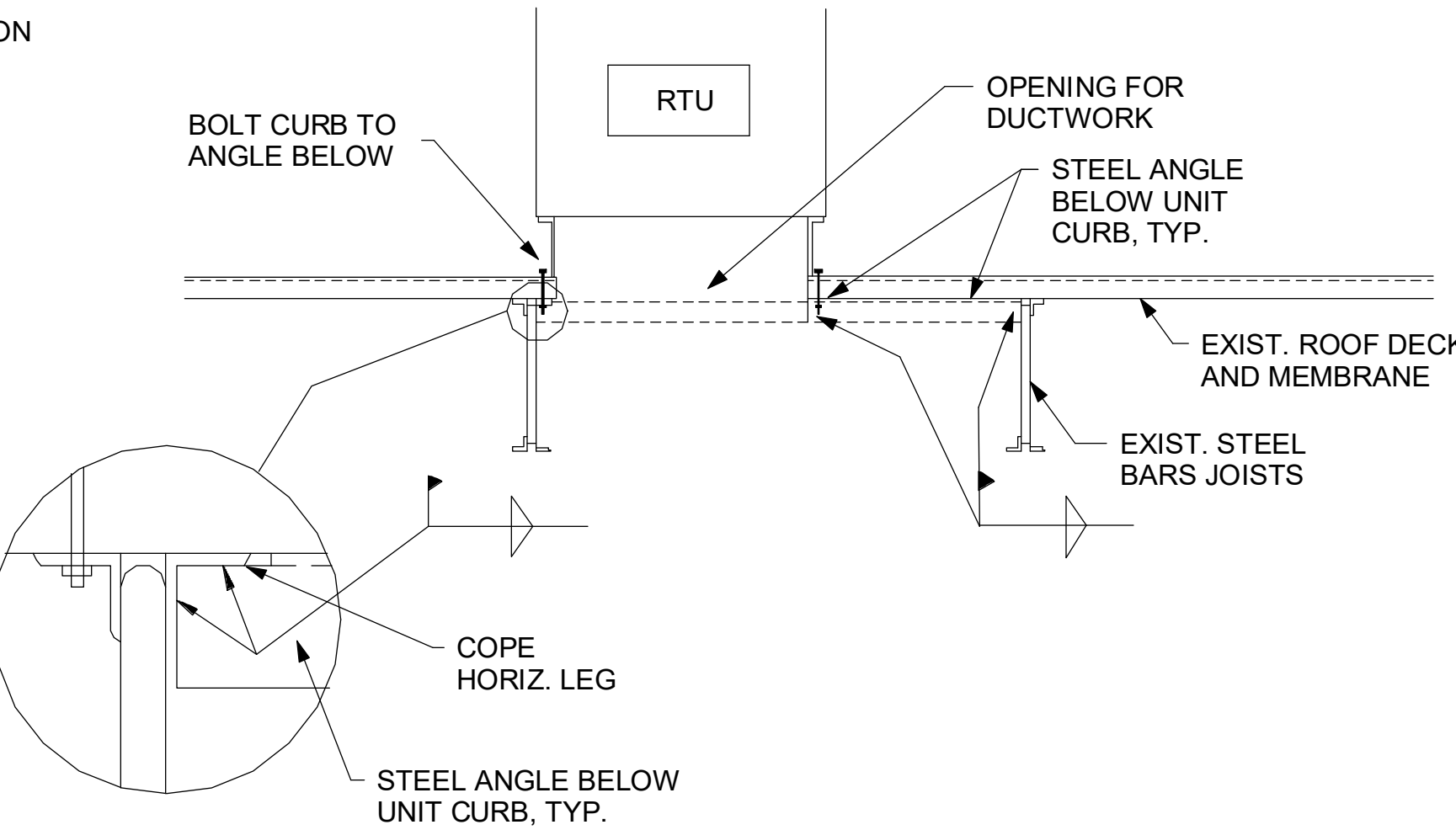
RTU SCHEDULE	
STANDARD EFFICIENCY PACKAGED UNIT (208/1/60)	
UNIT NUMBER	RTU-3 4 & 5
AREA SERVED	SEE FLR. PLAN
MODEL NAME	RACA14036BJT
NOM TONS	3.0
SYSTEM SEER	14.0
CFM	1200 @ .5"
REFRIGERANT	R-410A
AMBIENT	95
CAP (MBH) @ 80/67 (TC/SC)	35.0/26.2
CAP (MBH) @ 75/62 (TC/SC)	32.8/24.1
COMPRESSOR QTY/STAGES	1/1
COMPRESSOR 1 RLA-LRA	16.7-79.0
COND. FAN FLA-HP	1/1.0-1/5
EVAP. FAN FLA-BHP	5.4-3/4
HEATER KW	5.4
MCA	39.1
MOCP	40
DIMENSIONS (LxWxH) (IN)	49x33x52
STD WEIGHT (LBS)	349
MANUFATURER	RHEEM



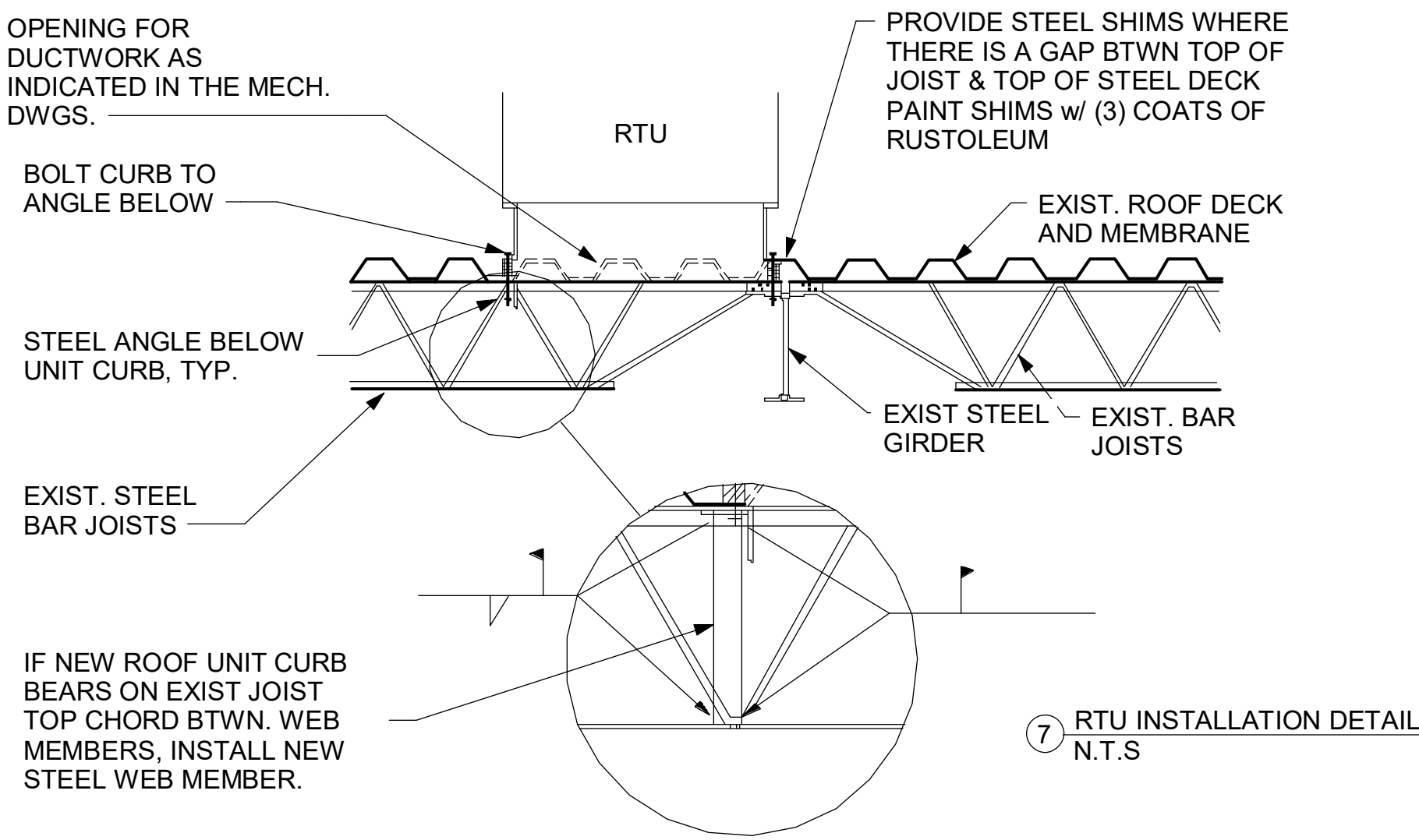
5 ROOF CU STAND DETAIL.
N.T.S.

CONDENSATE DISPOSAL

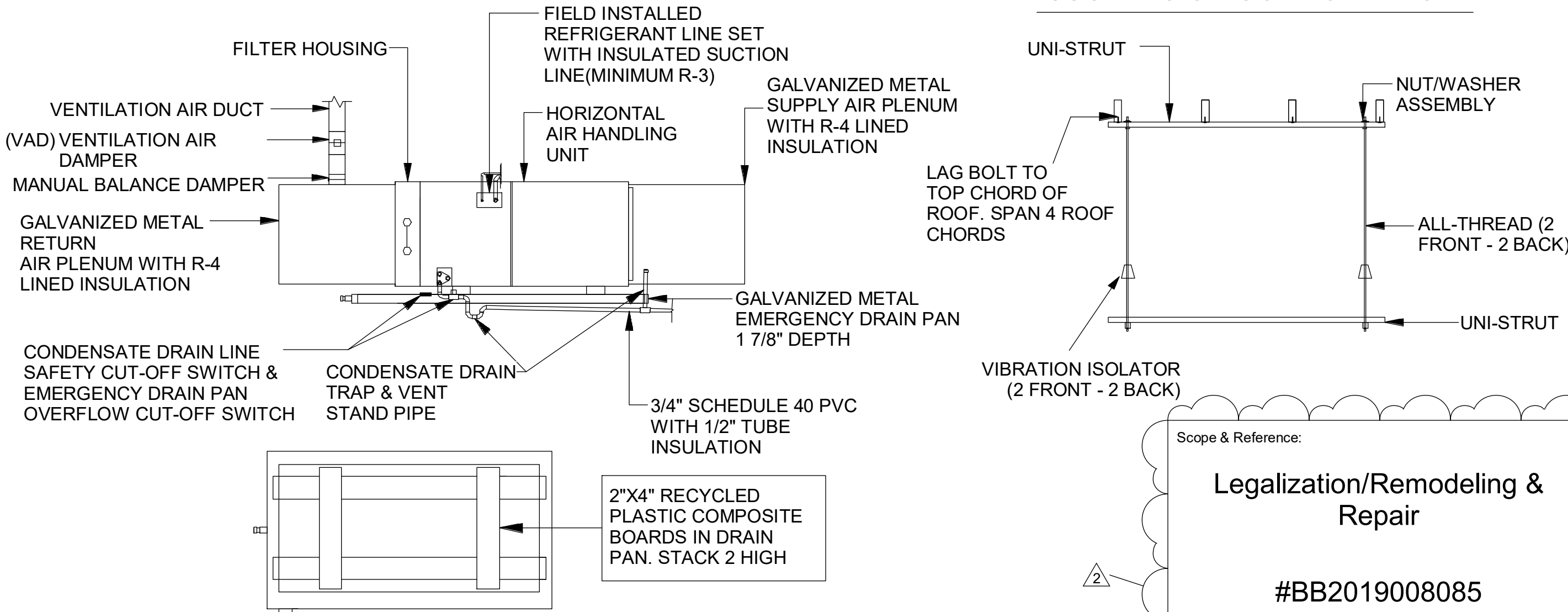
1. CONDENSATE DISPOSAL SHALL BE PROVIDED FOR EQUIPMENT AND APPLIANCES CONTAINING EVAPORATOR COILS.
2. CONDENSATE DRAIN SYSTEM SHALL BE DESIGNED, CONSTRUCTED AND INSTALLED IN ACCORDANCE WITH SECTIONS 307.2.1 THROUGH 307.2.4 OF THE 214 FLORIDA BUILDING CODE.
3. ALL PRIMARY CONDENSATE PIPING LOCATED WITHIN THE INSIDE OF THE BUILDING SHALL BE INSULATED TO PREVENT CONDENSATION FROM FORMING ON THE EXTERIOR OF THE DRAIN LINE.
4. MAIN AND EMERGENCY CONDENSATE DRAIN LINES SHALL BE SCHEDULE 40 PVC.
5. AUXILIARY DRAIN LINE CONNECTION AT THE EVAPORATOR DRAIN PAN SHALL INCORPORATE AN SAFETY CUT-OFF SWITCH.
6. AIR HANDLERS SHALL INCORPORATE AN EMERGENCY DRAIN PAN THAT IS PIPED TO A CONSPICUOUS LOCATION AT THE EXTERIOR OF THE BUILDING OR INCORPORATES A SAFETY CUT-OFF SWITCH.
7. SLOPE HORIZONTAL CONDENSATE DRAINS A MINIMUM OF 1/4" PER FOOT.
8. CONDENSATE SHALL BE CONVEYED FROM THE DRAIN PAN OUTLET TO AN APPROVED PLACE OF DISPOSAL. CONDENSATE SHALL NOT DISCHARGE INTO A STREET, SIDEWALK, OR ANY OTHER LOCATION AS TO CAUSE A NUISANCE. IF NO APPROVED LOCATION IS AVAILABLE, THEN A DRY WELL SHALL BE INSTALLED.
9. ALL DRAIN LINES SHALL BE PROVED AND TESTED UPON EQUIPMENT START-UP.
10. ALL DRAIN LINE AND DRAIN PAN SAFETY CUT OFF CONTROLS SHALL BE TESTED UPON EQUIPMENT START-UP.



TYPICAL HORIZONTAL AIR HANDLER DETAIL



HORIZONTAL AHU SUSPENSION COMPONENTS



Scope & Reference:

Legalization/Remodeling & Repair

#BB2019008085

Department Seal:



MEC DESIGN

6187 NW 167 ST #H24 MIAMI FL 33015
OFFICE: (305) 356-1755
WWW.MECDESIGNMIAMI.COM
ID0001355/IB0000591
AR0007205/PE31509
HOMERO CRUZ, L.I.D.
MANUEL A. VEGA, A.R.
JOSE A. MARTINEZ, P.E.

THIS DRAWING CONTAINS PROPRIETARY INFORMATION AND IS THE PROPERTY OF "MEC DESIGN CONSULTANTS, INC" AND MAY NOT BE REPRODUCED OR DISTRIBUTED WITHOUT THE WRITTEN PERMISSION OF "MEC DESIGN CONSULTANTS, INC"

Client Name:
5900 W LITTLE HAITI LLC

Project name/address:
Office Building
185 NE 59 ST
Miami, FL 33137

Seal:

Revision Schedule		
Revision	Date	By
1	02/29/2024	JL
2	12/12/2024	JL

Drawn by:
JL

Checked by:
HC

Date:
03/24/2023

Sheet name:
Mechanical Notes

Sheet number:
M100