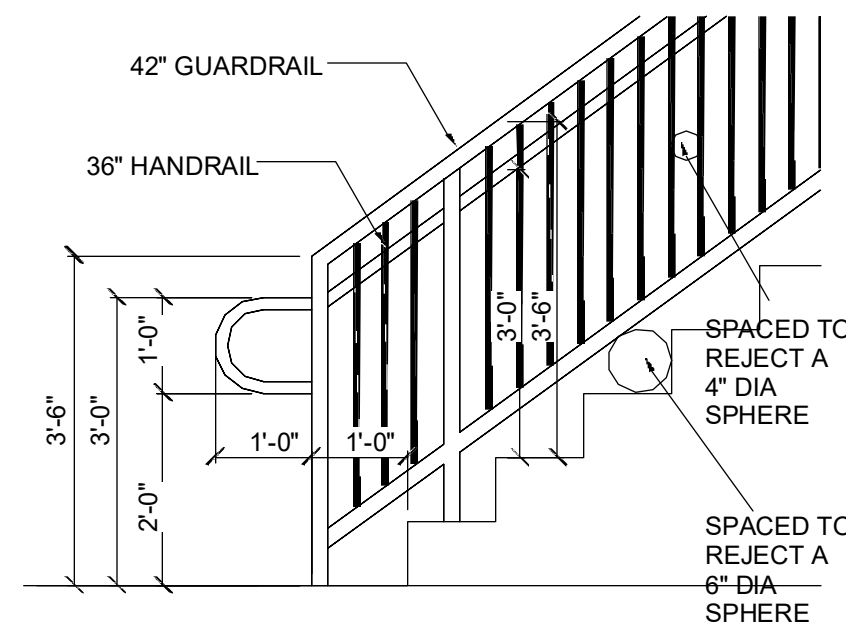
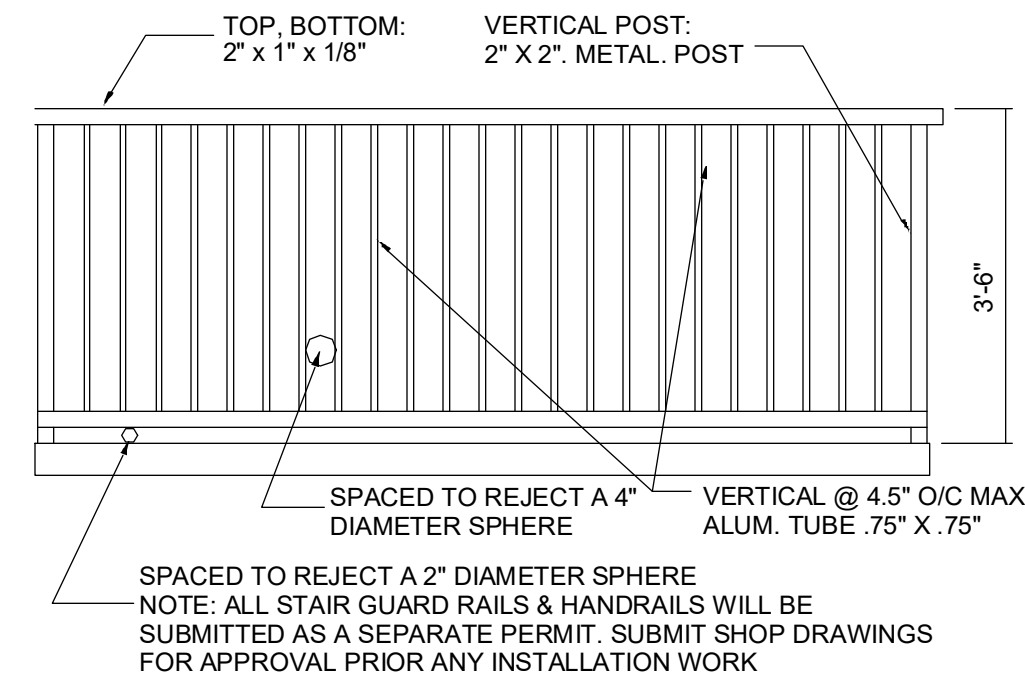


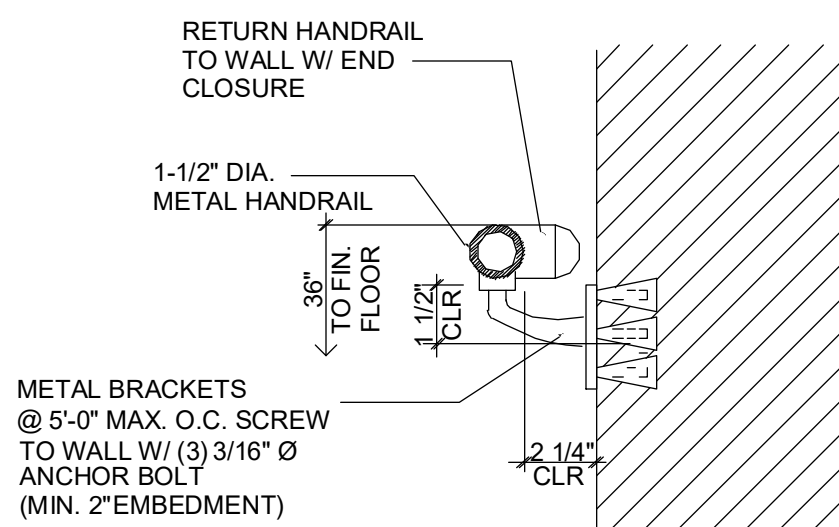
4 Typical Interior Wall Section  
3/4" = 1'-0"



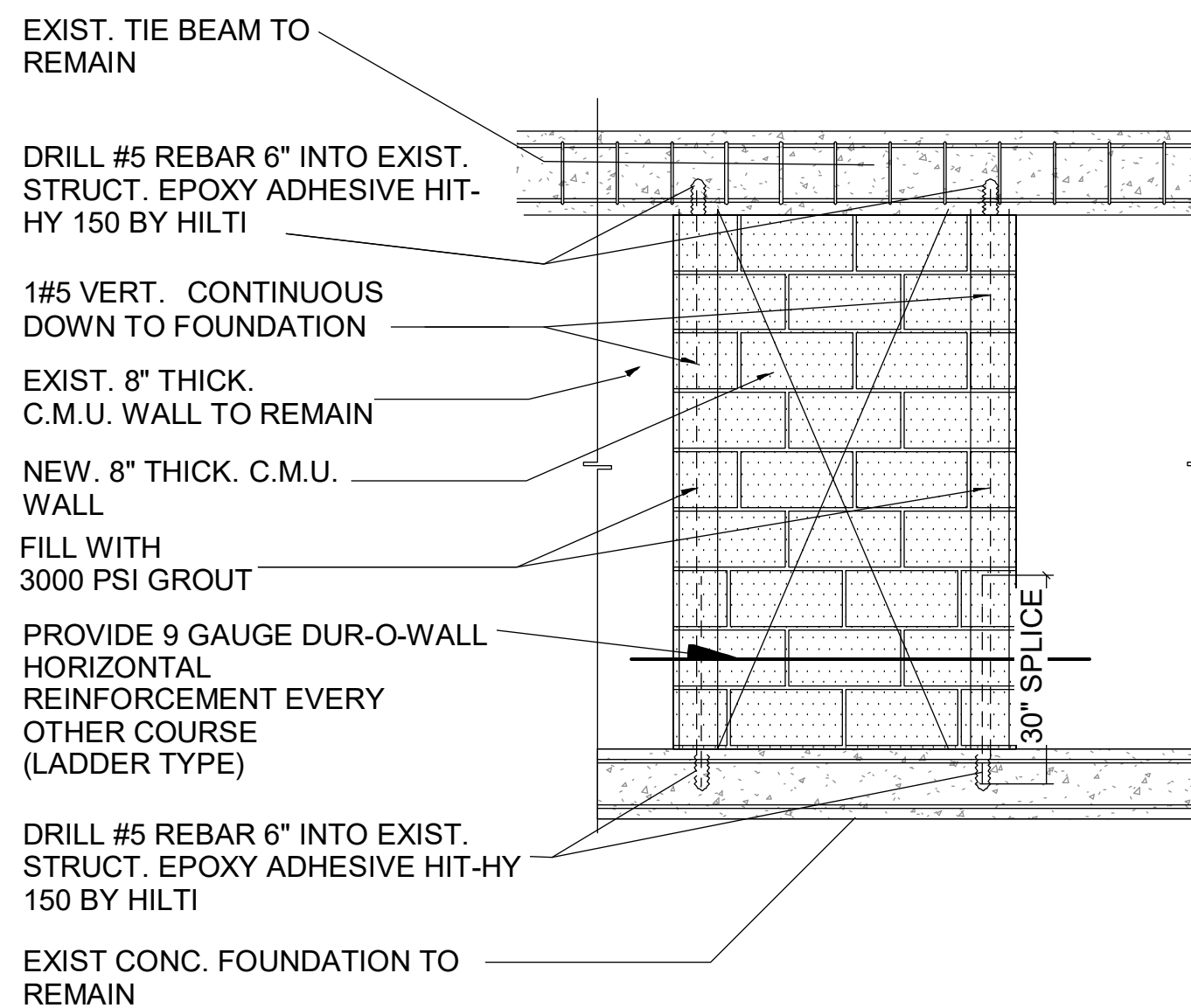
1 Typ. Stair Hand & Guardrail Detail  
1/2" = 1'-0"



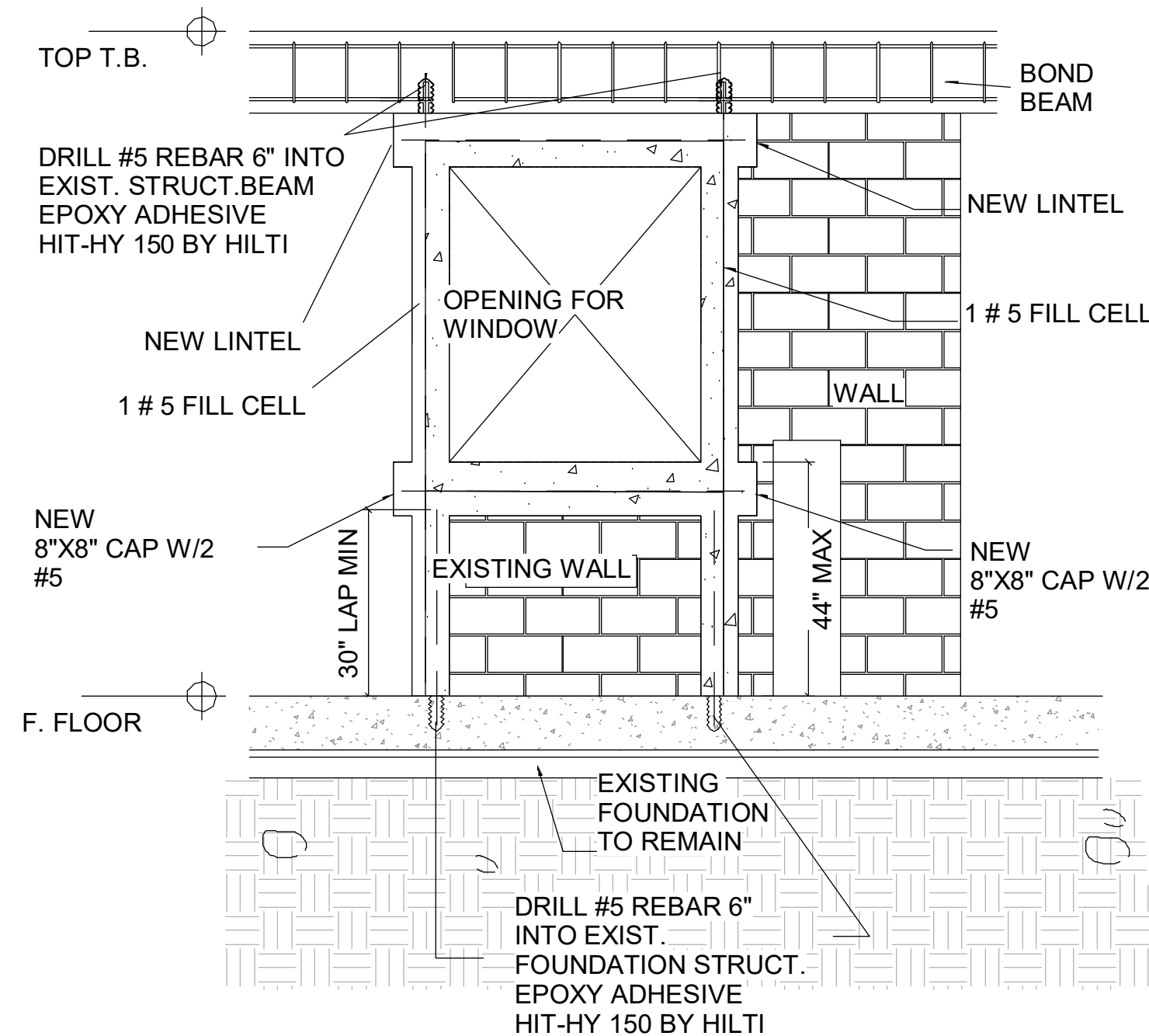
2 Typical Guardrail Detail  
1/2" = 1'-0"



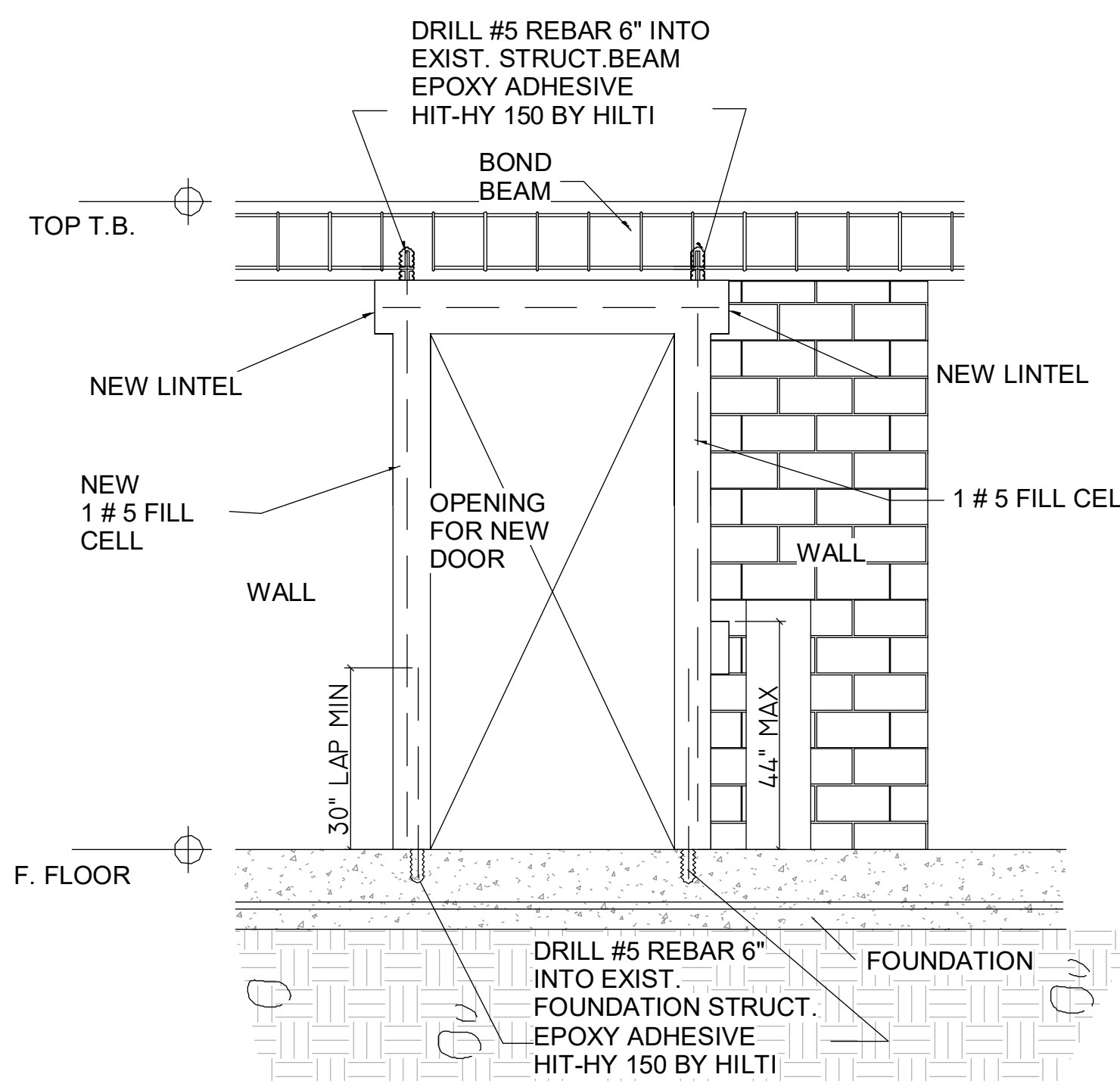
3 Typical Handrail Detail  
1/2" = 1'-0"



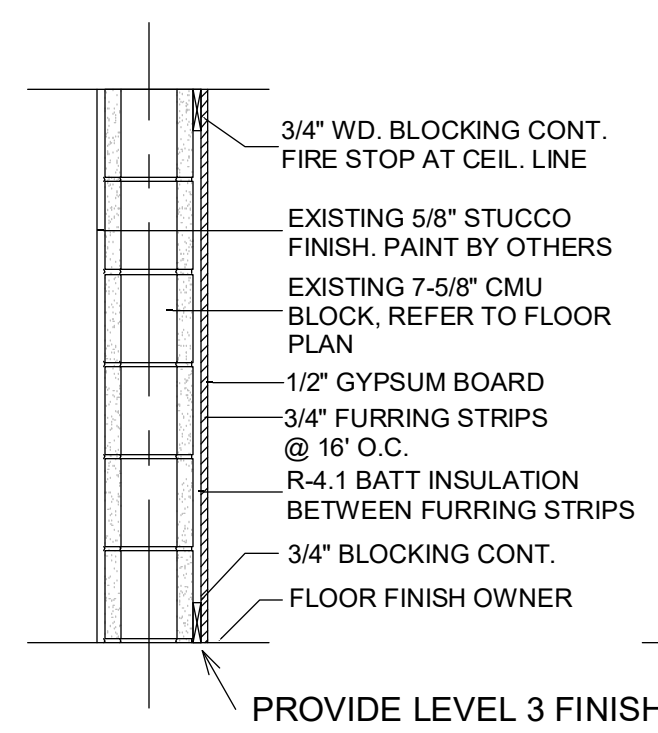
5 Wall Block-up Detail  
1/2" = 1'-0"



7 WINDOW OPENING DETAIL  
1/2" = 1'-0"

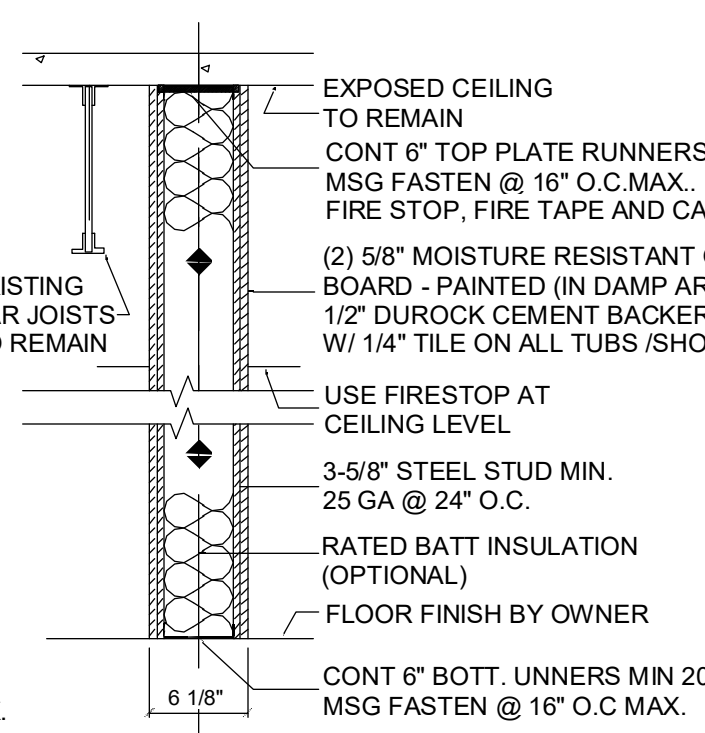
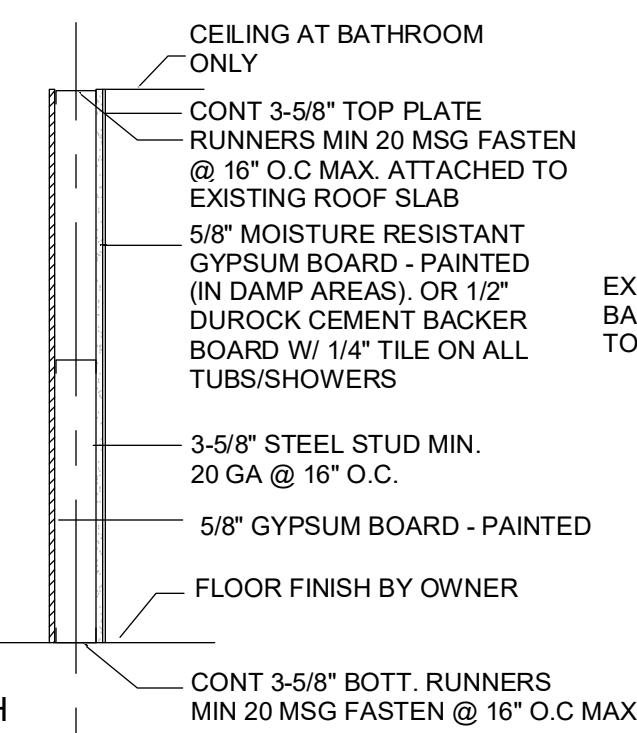


13 DOOR OPENING DETAIL  
1/2" = 1'-0"

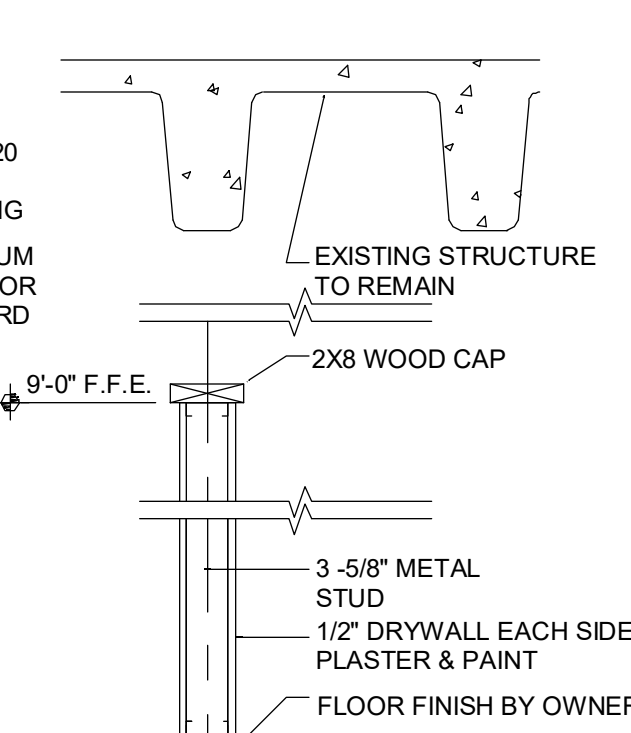


EXTERIOR BLOCK WALL INHERENTLY 1 HR RATED

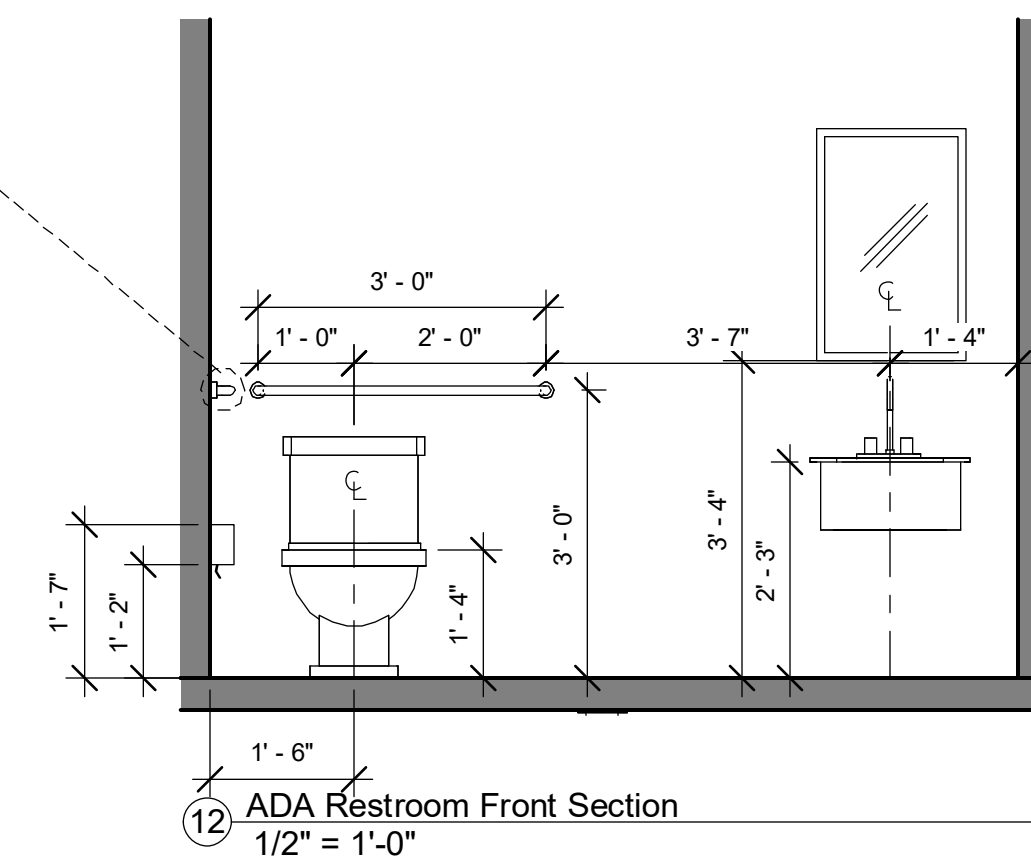
6 Wall Types  
1" = 1'-0"



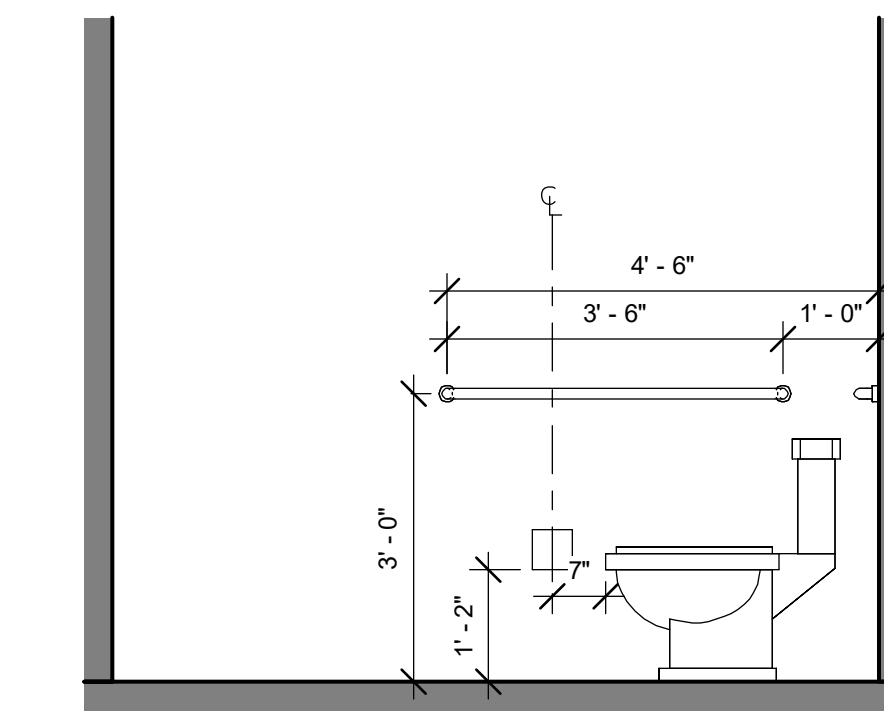
1HR INTERIOR RATED PARTITION UL DES U407



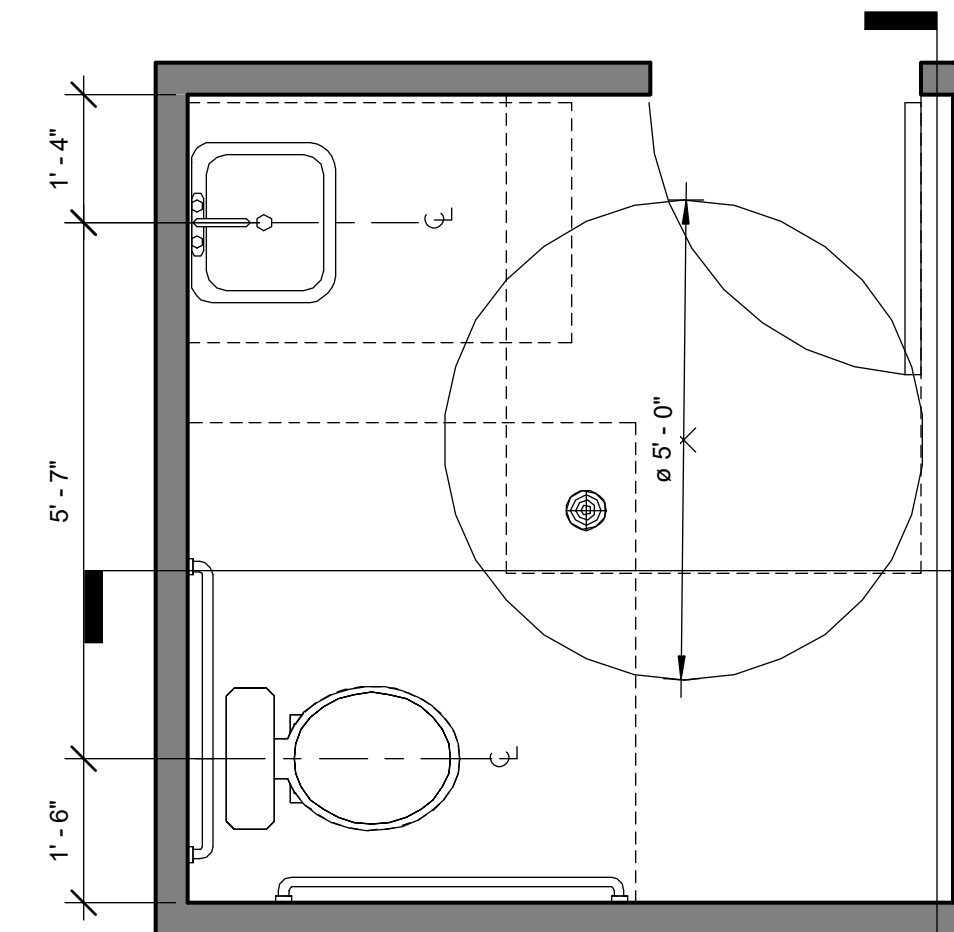
4



12 ADA Restroom Front Section  
1/2" = 1'-0"



11 ADA Restroom Side Section  
1/2" = 1'-0"



10 ADA Restroom Detail  
1/2" = 1'-0"

Scope & Reference:

Legalization/Remodeling & Repair

#BB2019008085

Department Seal:



MEC DESIGN

6187 NW 167 ST #H24 MIAMI FL 33015  
OFFICE: (305) 356-1755  
WWW.MECDESIGNMIAMI.COM  
ID0001355/IB0000591  
AR0007205/PE31509  
HOMERO CRUZ, L.I.D.  
MANUEL A. VEGA, A.R.  
JOSE A. MARTINEZ, P.E.

THIS DRAWING CONTAINS PROPRIETARY INFORMATION AND IS THE PROPERTY OF "MEC DESIGN CONSULTANTS, INC" AND MAY NOT BE REPRODUCED OR DISTRIBUTED WITHOUT THE WRITTEN PERMISSION OF "MEC DESIGN CONSULTANTS, INC"

Client Name:  
5900 W LITTLE HAITI LLC

Project name/address:  
Office Building

185 NE 59 ST  
Miami, FL 33137

Seal:

Revision Schedule

Revision	Date	By
2	12/12/2024	JL
3	12/14/2025	JL

Drawn by:  
JL

Checked by:  
HC

Date:  
03/24/2023

Sheet name:  
Details

Sheet number:  
A201