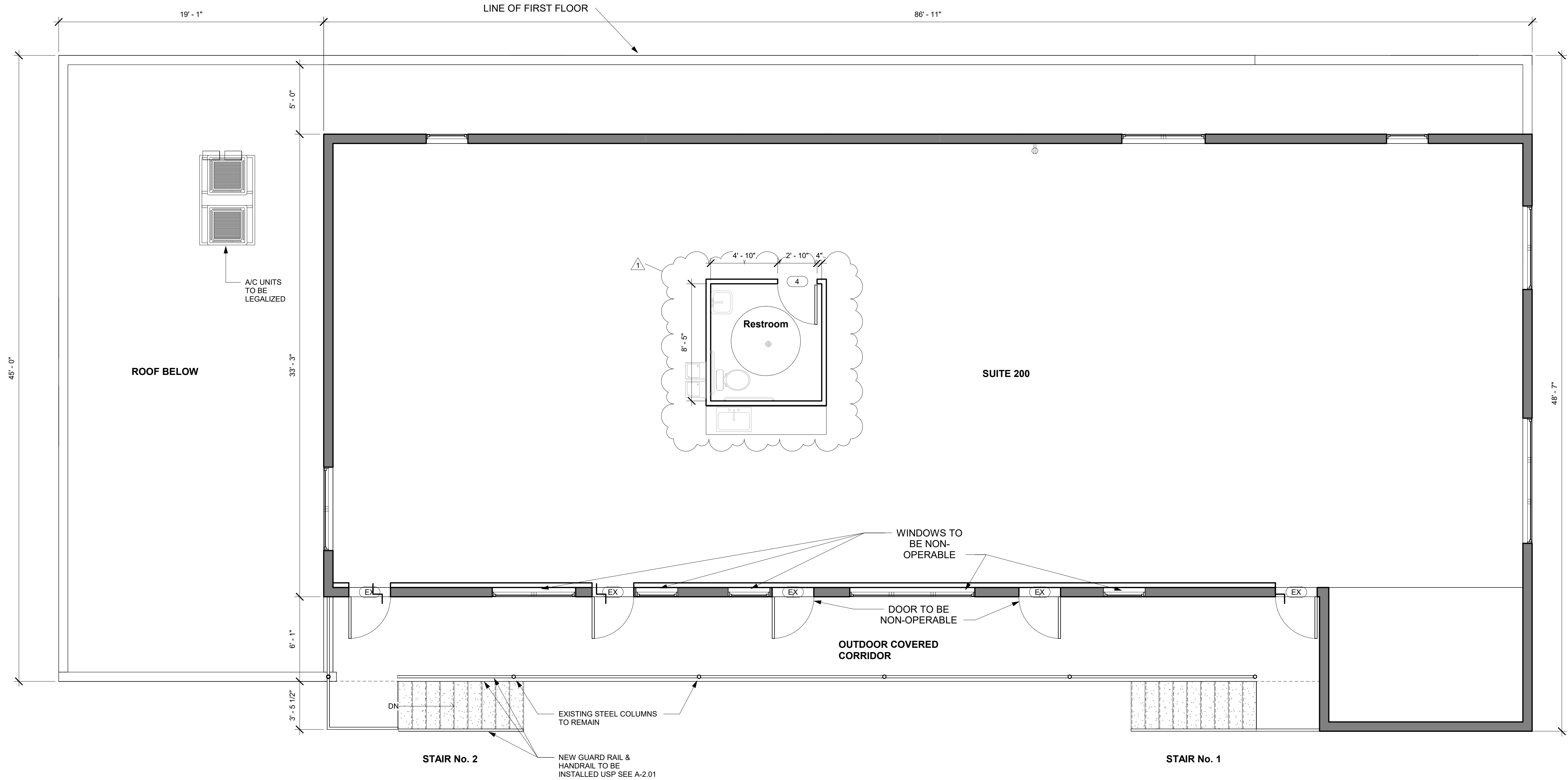


WALL LEGEND:

- EXISTING EXTERIOR CMU WALL (SEE DETAIL A201-6.1)
- NEW METAL STUD FRAME INTERIOR PARTITION WALL (SEE DETAIL A201-6.4)

PROPOSED USE:

THE PROPOSED USE FOR THE 1ST AND 2ND FOOR WILL BE AS RENTABLE OFFICE SPACES
THE FIRST FLOOR WILL INCLUDE A LOBBY AREA, HALLWAY, 2 ACCESSIBLE RESTROOMS, AND 10 OFFICE SPACES FOR RENT.
THE SECOND FLOOR WILL INCLUDE 1 OFFICE SPACE WITH 1 ACCESSIBLE RESTROOM.



1 2nd Floor Proposed
1/4" = 1'-0"

Scope & Reference:
Legalization/Remodeling &
Repair
#BB2019008085

Department Seal:



MEC DESIGN

6187 NW 167 ST #H24 MIAMI FL 33015
OFFICE: (305) 356-1755
WWW.MECDESIGNMIAMI.COM
ID0001355/IB0000591
AR0007205/PE31509
HOMERO CRUZ, L.I.D.
MANUEL A. VEGA, A.R.
JOSE A. MARTINEZ, P.E.

THIS DRAWING CONTAINS PROPRIETARY
INFORMATION AND IS THE PROPERTY OF
"MEC DESIGN CONSULTANTS, INC" AND MAY
NOT BE REPRODUCED OR DISTRIBUTED
WITHOUT THE WRITTEN PERMISSION OF
"MEC DESIGN CONSULTANTS, INC"

Client Name:
5900 W LITTLE HAITI LLC

Project name/address:
Office Building
185 NE 59 ST
Miami, FL 33137

Seal:

Revision Schedule		
Revision	Date	By
1	02/29/2024	JL
2	12/12/2024	JL
3	12/14/2025	JL

Drawn by: JL

Checked by: HC

Date: 03/24/2023

Sheet name:
Proposed 2nd Floor
Plan

Sheet number:
A105