



407 LINCOLN ROAD, SUITE 2C  
MIAMI BEACH, FL 33139  
Tel: 786.218.5335  
License #AA 26002467

WWW.CASTELLANOSDESIGN.COM

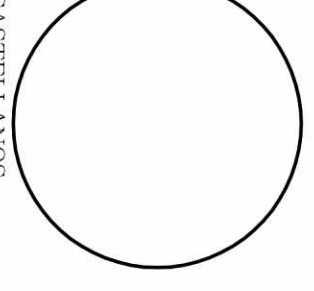
No. DATE ISSUED / REVISED

17 FEB/15 PERMITTING

12-3-15

1

SEAL :



WESLEY ART CASTELLANOS  
FLORIDA ARCHITECT LICENSE #AN 99133  
PROJECT NO : 2014-32

HVAC

FIRST & SECOND  
FLOOR  
PLAN

CHECKED BY : O.F.  
DRAWN BY : O.F.  
SCALE: AS NOTED  
© 2015 BY CDS

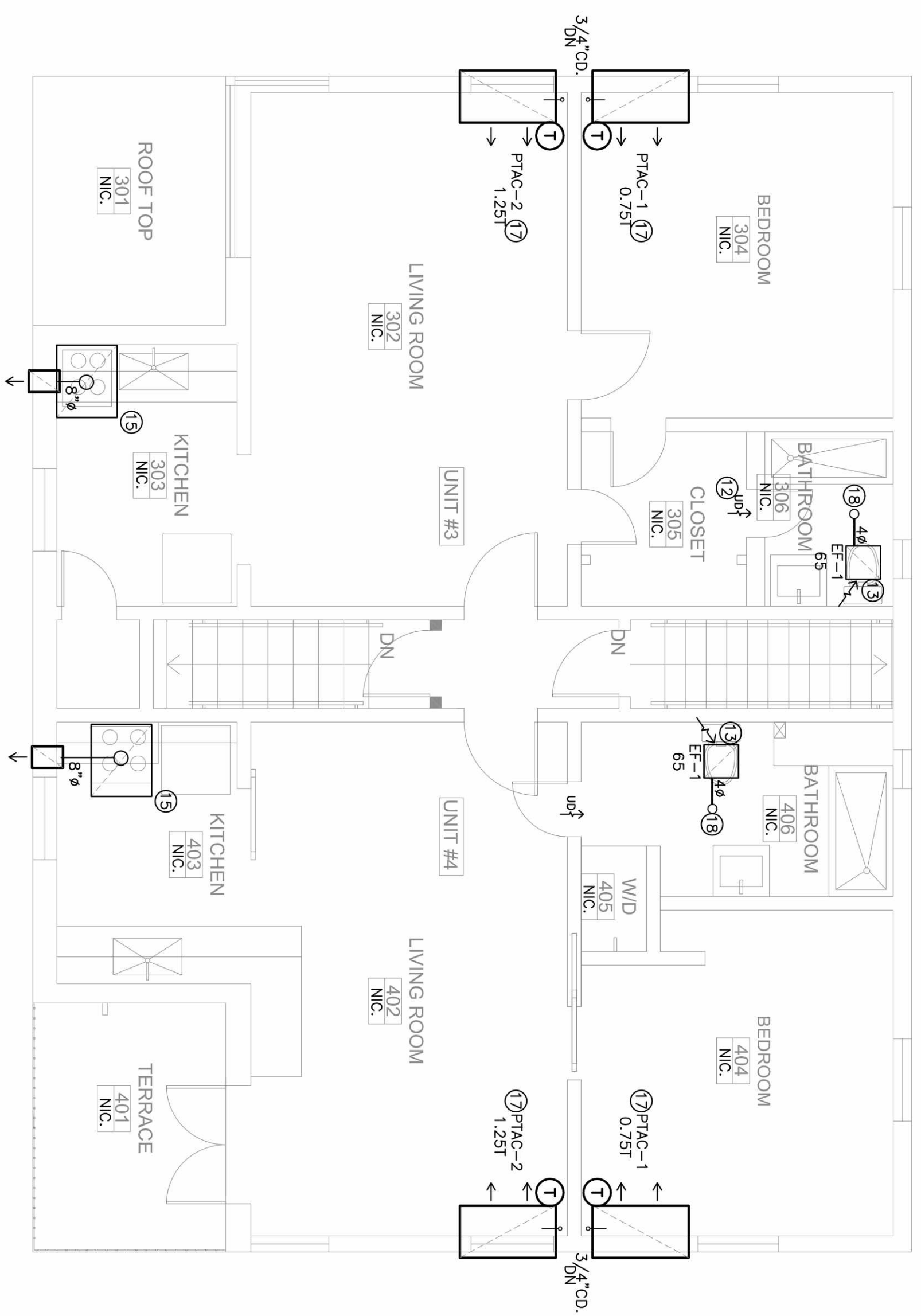
JOB # 15-0802

Amaluis Rodriguez, P.E.  
License Number 60236  
C.A. 2839

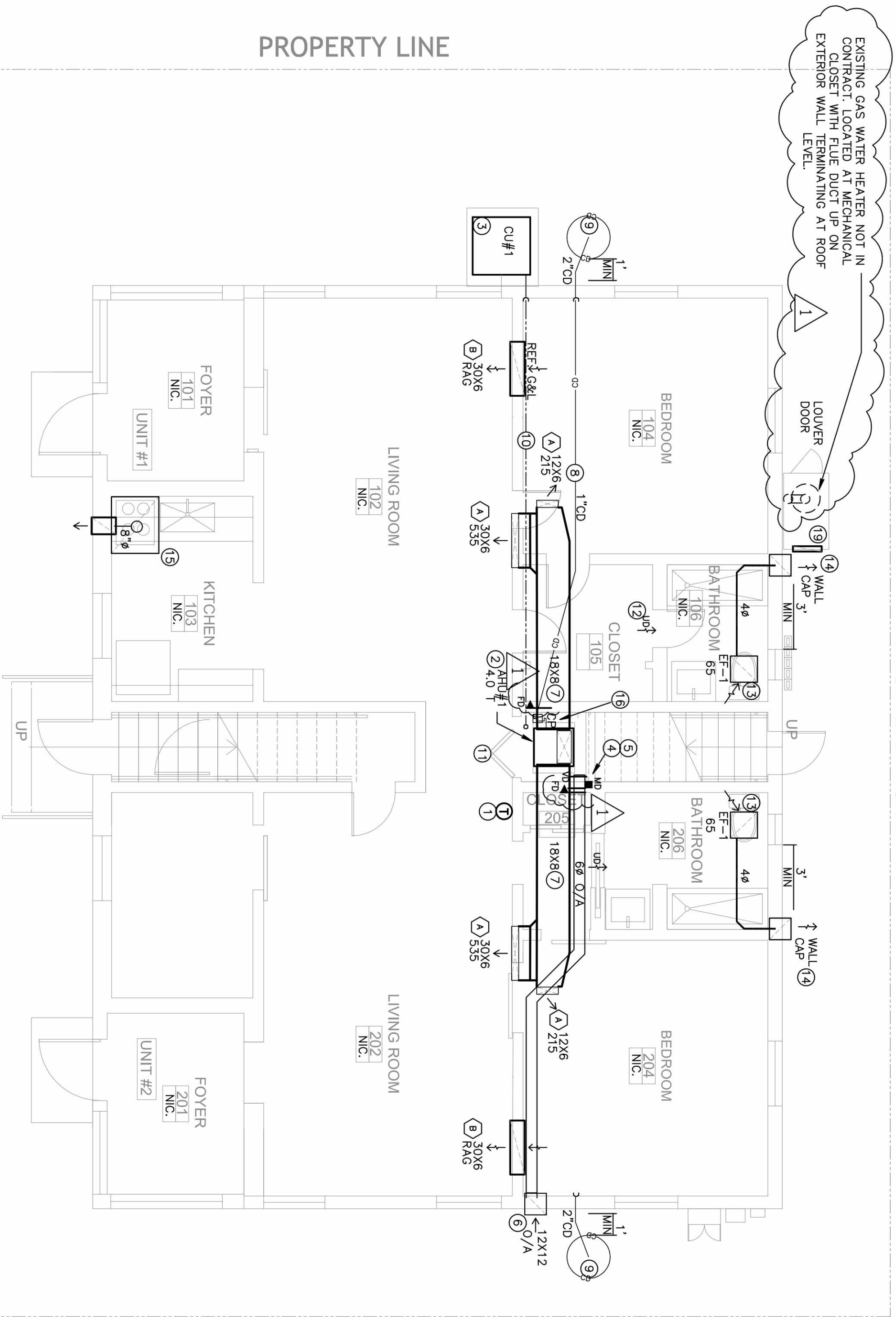
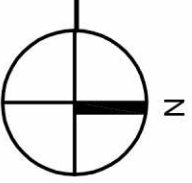
Signature  
Date

**engineering inc**  
Sulzer International Plaza  
1109  
Coral Gables, Florida 33134  
Phone > 305 444 9899  
Fax > 305 444 9827  
www.engpinc.com

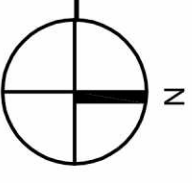
Greater Miami  
> Mechanical & Electrical  
> Plumbing & Fire Protection  
www.engpinc.com



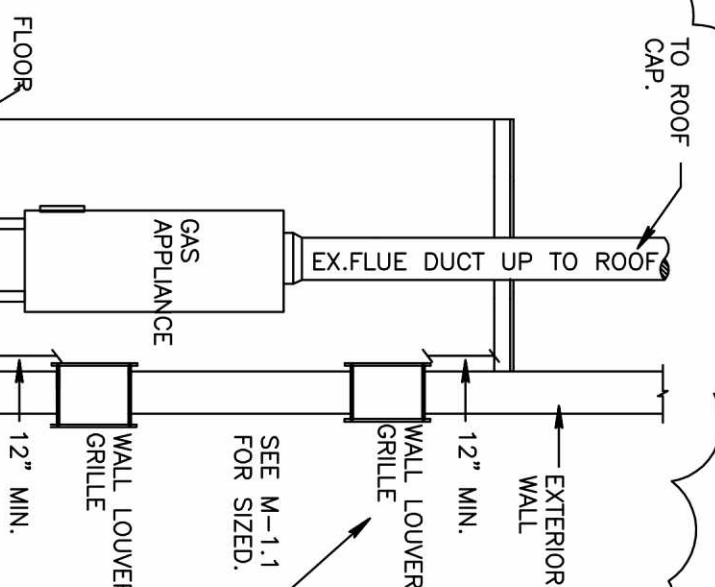
**HVAC**  
**1 SECOND FLOOR PLAN**  
SCALE : 1/4" = 1'-0"



**HVAC**  
**1 GROUND FLOOR PLAN**  
SCALE : 1/4" = 1'-0"



NOTES:  
1. GAS WATER HEATER / DRYER INSTALLATION & VENTILATION SHALL BE PER MANUFACTURER SPECIFICATIONS & LISTED FOR FUEL GAS  
2. GAS WATER HEATER  
3. GAS WATER HEATER  
4. COMBUSTION AIR INTAKE  
5. N.T.S.



COMBUSTION AIR INTAKE DETAIL  
N.T.S.

**HVAC NOTES:**

- 1 WALL MOUNT PROGRAMMABLE THERMOSTAT AT 50" A.F.F.
- 2 VERTICAL MOUNT AIR HANDLER UNIT (AHU), AS SIZED ON PLAN, ALLOW MINIMUM 6" AROUND AHU, INSTALLATION AND SERVICE CLEARANCES AS PER MANUFACTURER SPECIFICATIONS.
- 3 CONCRETE PAD MOUNTED CONDENSING UNIT ABOVE FLOOR LEVEL, THE DOWN SHALL BE MAMI-DADE APPROVED. PROVIDE MOTORIZED DAMPER (MD), MD CLOSED WHEN SPACE IS NOT IN USED.
- 4 PROVIDE MANUAL VOLUME DAMPER, TYPICAL.
- 5 OUTSIDE AIR (O/A) DUCT AS SIZED ON PLAN, TERMINATING WITH WALL LOUVER, BASE ON RUSKIN EMES220MD, NOA 12-0816.01, MINIMUM FREE AREA 0.25 PROVIDE CORROSION RESISTANT SCREEN, O/A SHALL BE MINIMUM 10' AWAY FROM ANY EXHAUST OR VENT. FIELD VERIFY/COORDINATE FINAL LOCATION.
- 6 DUCTWORK TO BE RIGID FIBER GLASS DUCT BOARD 1.5" THICK (R-6).
- 7 INSULATED CONDENSATE COLLECTION FIELD VERIFY/COORDINATE FINAL LOCATION.
- 8 REFRIGERANT LINES AT CEILING TO CONDENSER UNIT (CU), FULL LOUVERED DOOR FOR RETURN AIR, NO COMBUSTIBLES ALLOWED.
- 9 1" DOOR UNDER CUT, TYPICAL.
- 10 CEILING EXHAUST FAN & GRILLE W/BACKDRAFT DAMPER AS SIZED ON PLAN.
- 11 EXHAUST DUCT AS SIZED ON PLAN TO WALL CAP.
- 12 PROVIDE CORROSION RESISTANT SCREEN.
- 13 NEW HOOD 200CFM, PROVIDE EXHAUST DUCT TERMINATED IN WALL PACK WITH BIRD SCREEN AND BACK DRAFT DAMPER.
- 14 CONDENSATE PUMP (CP), SEE SPECS. ON SCHEDULES SHEET.
- 15 PMA HEAT PUMP UNIT, RIN CONDENSATE LINE ON WALL DOWN TO DRY WELL, FIELD COORDINATE.
- 16 EXHAUST DUCT AS SIZED ON PLAN UP TO ROOF CAP.
- 17 TWO 18X18 VENTILATION LOUVER, ONE @ 12" A.F.F. AND ONE @ 12" BELOW ROOF DECK, REFER TO DETAIL.

**COMBUSTION AIR CALCULATION:**

FCG-GAS: 2014 304.9 MECHANICAL COMBUSTION AIR SUPPLY MINIMUM 0.35 CFM PER 1,000 BTU/HR.  
GAS WATER HEATER 400,000 BTU  
TOTAL COMBUSTION AIR: 140 CFM.

SCOPE OF WORK:  
CHANGE OF USE FROM APARTMENT BUILDING TO SHORT TERM HOTEL.  
NEW AC EQUIPMENT AND NEW AIR DISTRIBUTION.  
ENERGY CONSERVATION NOTES:  
ALL HVAC EQUIPMENT SHALL BE EQUIPPED WITH PROGRAMMABLE THERMOSTAT TO ALLOW SYSTEM SHUT DOWN AFTER HOURS OF OPERATION. ALL LIGHTING HAS AFTER HOURS SHUT DOWN. ALL AC EQUIPMENT PROVIDE WITH OUTSIDE AIR MOTORIZED DAMPERS TO SHUT DOWN WHEN SPACE IS NOT IN USED.