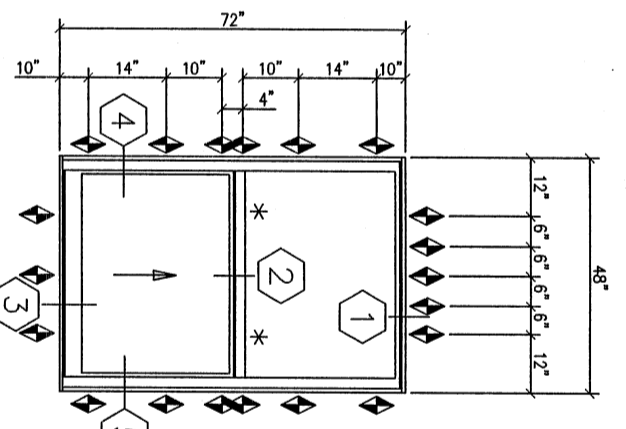
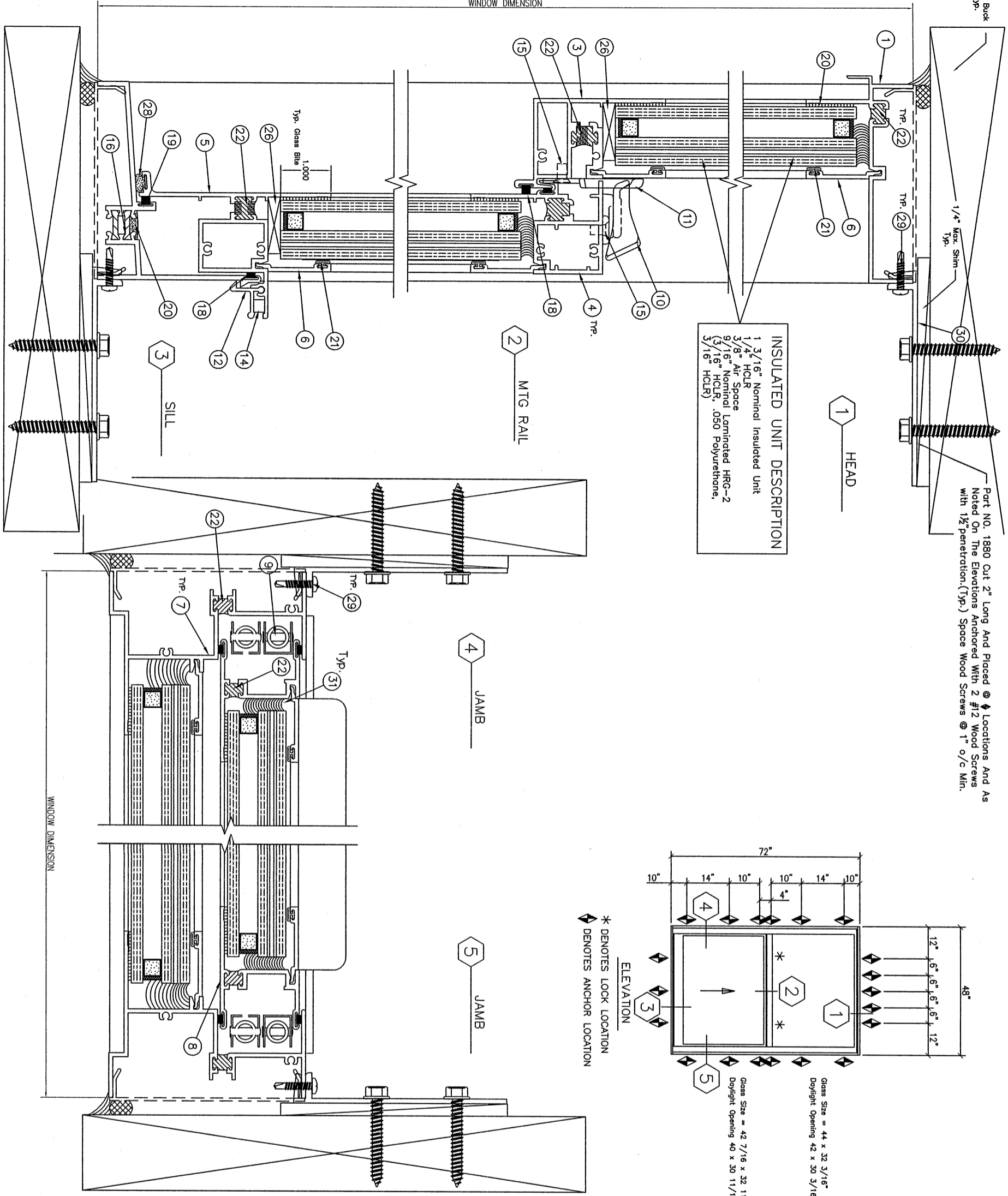


Wood Buck
Typ.

Part NO. 1880 Cut 2" Long And Placed @ Locations And As Noted On The Elevations Anchored With 2 #12 Wood Screws with 1/2" penetration. (Typ.) Space Wood Screws @ 1' o/c Min.

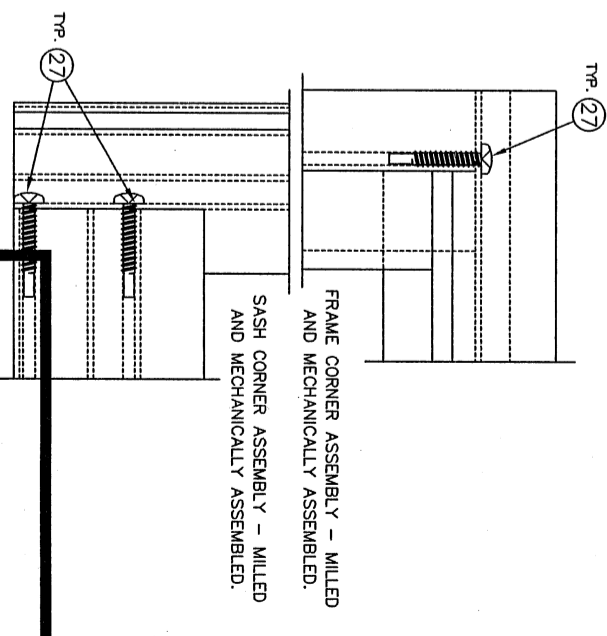
INSULATED UNIT DESCRIPTION

1 3/16" Nominal Insulated Unit
1/4" HCLR
3/8" Air Space
9/16" Nominal Laminated HRC-2
(3/16" HCLR, .050 Polyurethane,
3/16" HCLR)



* DENOTES LOCK LOCATION
♦ DENOTES ANCHOR LOCATION

ITEM	#	RECD	PART #	DESCRIPTION	MFG.
1	1	11W2	.080 HEAD		EFCO
2	1	1L09	.094 H.P. SILL		EFCO
3	1	11W4	FRAME MEETING RAIL		EFCO
4	1	10X5	SASH MEETING RAIL		EFCO
5	1	10X7	SASH HANDLE RAIL		EFCO
6	8	14L2	GLAZING BEAD		EFCO
7	1/1	11W3	.080 FRAME JAMBS		EFCO
8	1/1	10X3	LOWER SASH SIDE RAILS		EFCO
9	4	AS RECD	SASH BALANCES		BALANCE SYSTEMS
10	1/1	HAB/ALB9	SWEEP LOCK		BRONZE CRAFT
11	2	HK88	KEEPER		BRONZE CRAFT
12	2	F125	AUTO SILL LOCK		EFCO
13	2	KS31	SASH STOP (NOT SHOWN)		EFCO
14	2	HS17	AUTO SILL SPRING		INDUSTRIAL SPRING
15	8	STU8	#10-16x3/8" PL-PH-SMS 18-8		INDUSTRIAL SPRING
16	AS RECD	LAA3	"I" STRUT		S.B. INDUSTRIES
17	2	LB13	JAMB FILLER		INDUSTRIES
18	AS RECD	WF08	PILE WEATHER STRIPPING		
19	AS RECD	WF01	PILE WEATHER STRIPPING		
20	AS RECD	JJ66	Back Bedding (295MB)		Bondflex CENTRAL PLASTICS
21	AS RECD	WA04	GLAZING BEAD VINYL		BASF
22	AS RECD	WF04	2 PART POLYURETHANE		
23	AS RECD	WF05	PILE WEATHER STRIPPING		
24	AS RECD	WF05	PILE WEATHER STRIPPING		
25	2	STT6	#8-18x9/16" PL-PH-SMS ZC TEK		EPG
26	12	HN98	GLAZING BLOCK		EPG
27	16	SLQ2	#8-18x1" PL-PH-SMS 18-8 B-LP		
28	AS RECD	WQ06	O-LON WEATHER STRIPPING		
29	AS RECD	STK0	#8-18x3/4" PL-PH-410 TEK/2		
30	AS RECD	1880	"F" ANCHOR		EFCO
31	As Req'd	JJ61	Head Bead (295M)		Bondflex CENTRAL PLASTICS
32	AS RECD	LB	VINYL FRAME FILLER		



FRAME CORNER ASSEMBLY - MILLED AND MECHANICALLY ASSEMBLED.

SASH CORNER ASSEMBLY - MILLED AND MECHANICALLY ASSEMBLED.

[Handwritten Signature]

CRAIG M. ONDRICK
FL LICENSE # 57270
DATE: 11/7/07

TAPPANA ONDRICK
STRUCTURAL ENGINEERS

1968 S. HALL
WEBB CITY, MO. 64870
PHONE: 1-417-673-0463
FAX: 1-417-673-0463

663 SINGLE HUNG

**LARGE MISSILE IMPACT
D.P. +/- 120 PSF A-W-S**

**O.L. +/- 180 PSF
REPORT# G046-0512-07**

DATE: 11-7-07

REVISIONS:

CHECKED: [Signature]

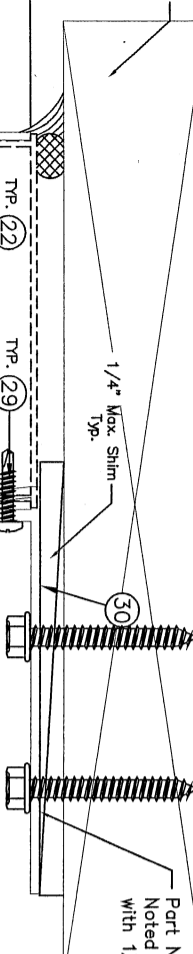
PROJECT ENGINEER: [Signature]

PROJ. NO.: 07-155.8

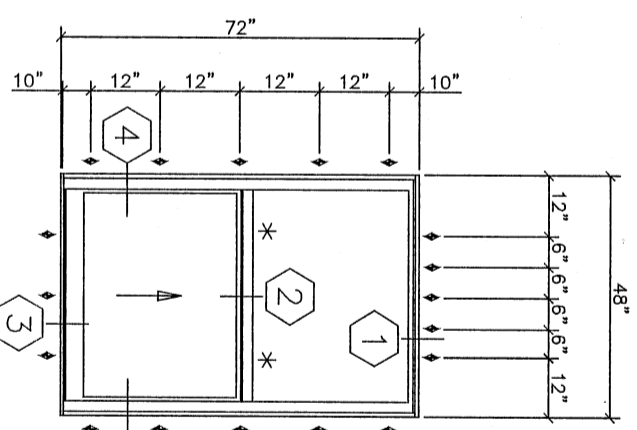
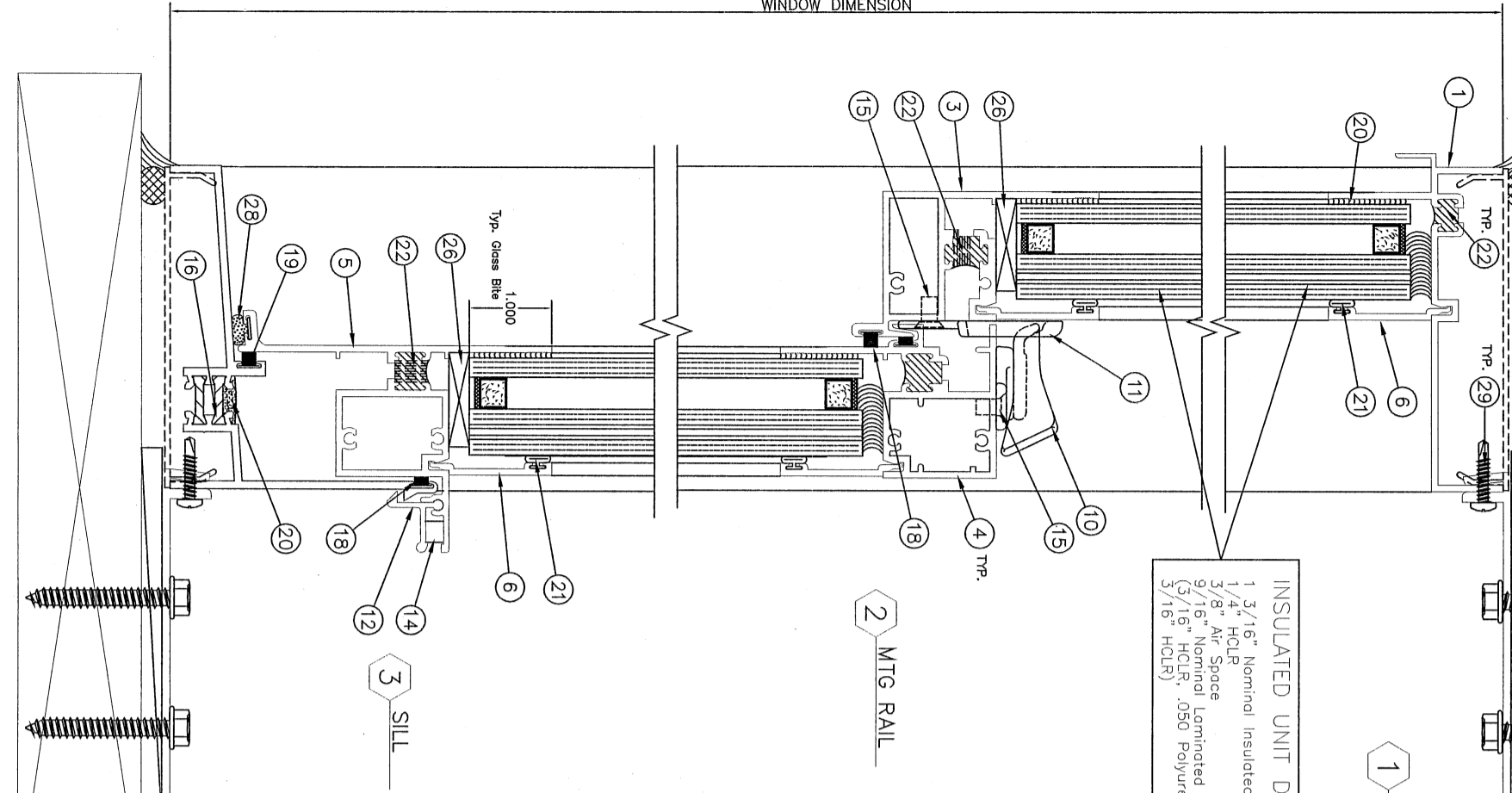
SHEET NO.: 1/1

Part NO. 1880 Cut 2" Long And Placed @ 4 Locations And As Noted On The Elevations Anchored With 2 #12 Wood Screws With 1/2" penetration. (Typ.)

Wood Buck
Typ.



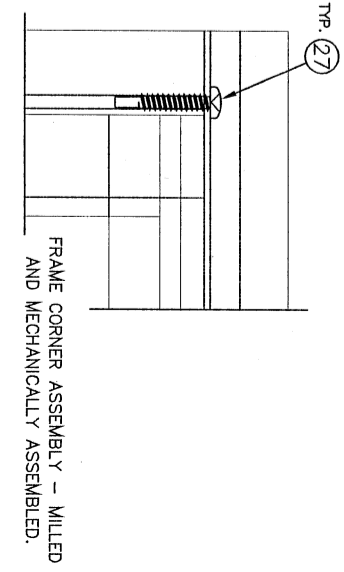
INSULATED UNIT DESCRIPTION
 1 3/16" Nominal Insulated Unit
 1/4" HCLR
 3/8" Air Space
 9/16" Nominal Laminated HRG-2
 (3/16" HCLR, .050 Polyurethane,
 3/16" HCLR)



* DENOTES LOCK LOCATION
 * DENOTES ANCHOR LOCATION

Glass Size = 42 7/16 x 32 11/16"
 Daylight Opening 40 x 30 11/16"
 Daylight Opening 42 x 30 3/16"

ITEM	# REQD	PART #	DESCRIPTION	MFG.
1	1	11W2	.080 HEAD	EFCO
2	1	11O9	.094 H.P. SILL	EFCO
3	1	11W4	FRAME MEETING RAIL	EFCO
4	1	10X5	SASH MEETING RAIL	EFCO
5	1	10X7	SASH HANDLE RAIL	EFCO
6	8	14J2	GLAZING BEAD	EFCO
7	1/1	11W3	.080 FRAME JAMBS	EFCO
8	1/1	10X3	LOWER SASH SIDE RAILS	EFCO
9	4	AS REQD	SASH BALANCES	BALANCE SYSTEMS
10	1/1	H88/H89	SLEEP LOCK	CRANE
11	2	HK88	KEEPER	BROUNKE CRAFT
12	2	F125	AUTO SILL LOCK	EFCO
13	2	KS31	SASH STOP (NOT SHOWN)	EFCO
14	2	HS17	AUTO SILL SPRING	INDUSTRIAL SPRING
15	8	STU8	#10-16x3/8" PL-PH-SMS 18-8	S.B. INDUSTRIES
16	AS REQD	LAA3	"1" STRUT	S.B. INDUSTRIES
17	2	LB13	JAMB FILLER	S.B. INDUSTRIES
18	AS REQD	WF08	PILE WEATHER STRIPPING	S.B. INDUSTRIES
19	AS REQD	WF01	PILE WEATHER STRIPPING	S.B. INDUSTRIES
20	AS REQD	JU66	Back Bedding (295MB)	Bondflex CENTRAL PLASTICS
21	AS REQD	WA04	GLAZING BEAD VINYL	BASF
22	AS REQD	AS REQD	2 PART POLYURETHANE	BASF
23	AS REQD	WF04	PILE WEATHER STRIPPING	S.B. INDUSTRIES
24	AS REQD	WF05	PILE WEATHER STRIPPING	S.B. INDUSTRIES
25	2	ST16	#8-18x9/16" PL-PH-SMS ZC TEK	EPG
26	12	HN98	GLAZING BLOCK	EPG
27	16	SLQ2	#8-18x1" PL-PH-SMS 18-8 B-LP	EPG
28	AS REQD	WQ06	O-LON WEATHER STRIPPING	EPG
29	AS REQD	STK0	#8-18x3/4" PL-PH-410 TEK/2	EPG
30	AS REQD	1880	"F" ANCHOR	EFCO
31	As Req'd	JU61	Head Bead (295M)	Bondflex CENTRAL PLASTICS
32	AS REQD	LB	VINYL FRAME FILLER	Bondflex CENTRAL PLASTICS



SASH CORNER ASSEMBLY - MILLED AND MECHANICALLY ASSEMBLED.

FRAME CORNER ASSEMBLY - MILLED AND MECHANICALLY ASSEMBLED.

LARGE MISSILE IMPACT

©2007 EFCO CORPORATION ALL RIGHTS RESERVED