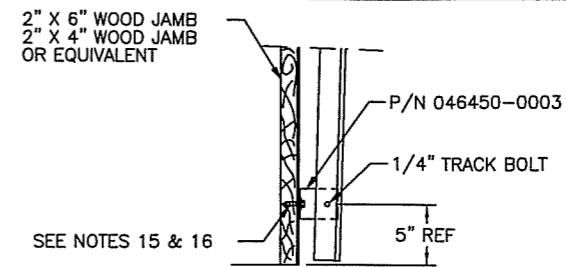
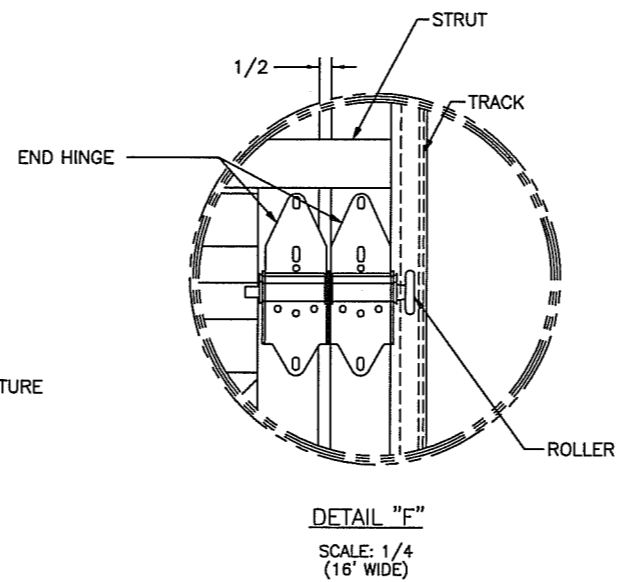
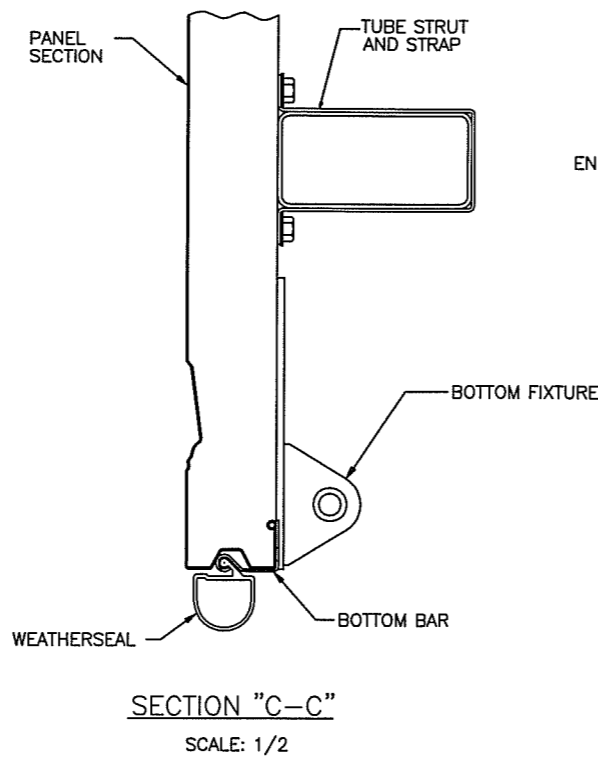
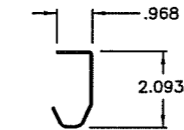


NOTES

- DOOR QUALIFIES FOR HVHZ USE.
- FOUR SECTION 7' HIGH DOOR SHOWN. 8' HIGH DOORS HAVE FIVE SECTIONS.
- SECTION HEIGHT OF 20.812, 19.00 & 16.75 ARE AVAILABLE AND MAY BE USED IN COMBINATION TO ACHIEVE VARIOUS HEIGHT DOORS.
- EMBOSSMENT PATTERN OF 14.50 X 20.375 SHOWN. ALTERNATE PATTERNS OF 12.50 X 43.375 AND 12.50 X 20.375 MAY BE USED. DOOR WITHOUT EMBOSSMENTS ALSO AVAILABLE.
- TORSION SPRINGS SHOWN. EXTENSION SPRINGS AVAILABLE.
- RATED DESIGN LOAD +45/-49 P.S.F.
- USE THIS BRACKET, REF. P/N 405964-0003, ON 16' X 8' HIGH DOORS.
- TESTED IN ACCORDANCE WITH FLORIDA BUILDING CODE PROTOCOLS TAS 201-94, TAS 202-94, & TAS 203-94.
- DASH NUMBERS REPRESENT VARIOUS SECTION HEIGHTS.
- GALVANIZED STEEL SKIN SHALL CONFORM TO ASTM 653, 37,000 PSI MIN YIELD STRENGTH. DOOR SKIN MATERIAL SHALL BE GALVANIZED ACCORDING TO ASTM A525 TO G90 OR AN EQUIVALENT SURFACE COATING.
- JAMB LOAD CALCULATIONS:
 $(1/2 \text{ DOOR WIDTH})(1 \text{ FOOT OF HEIGHT})(\text{DESIGN LOAD})$
 $(8 \text{ FEET})(1 \text{ FOOT})(49 \text{ PSF})=392 \text{ lb/FT OF HEIGHT.}$
- JAMB FASTENER REQUIREMENT:
 $(1/2 \text{ DOOR WIDTH})(1 \text{ FOOT})(\text{DESIGN LOAD})$
 $(8 \text{ FEET})(1 \text{ FOOT})(49 \text{ PSF})=392 \text{ lb.}$
- FOR ANCHORING INTO WOOD, USE ONE 5/16" LAG SCREW PER TRACK BRACKET WITH 1 1/2" EMBEDMENT INTO S.Y. PINE OR BETTER.
- IF ANCHORED DIRECTLY TO CONCRETE OR GROUT FILLED CONCRETE BLOCKS OR THRU A 2x6 WOOD JAMBS. USE ONE 5/16" POWERS LOK/BOLT PER TRACK BRACKET WITH 1 1/2" EMBEDMENT INTO CONCRETE OR BLOCK.
- DOUBLE STRAPS AT END STILE AND STILE LOCATED AT MIDPOINT OF DOOR WIDTH.

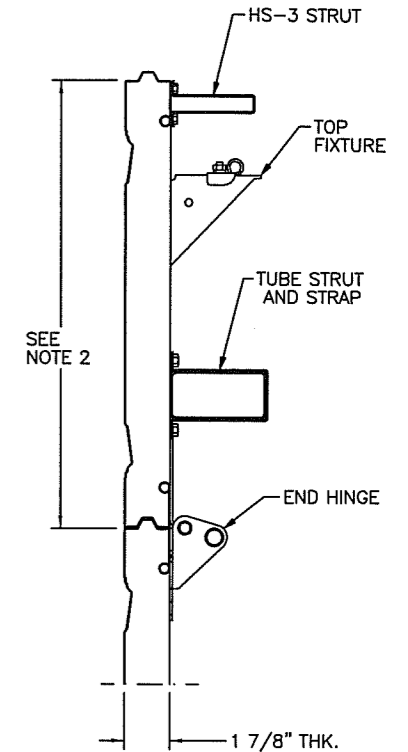


DETAIL "E"
SCALE: 1/8

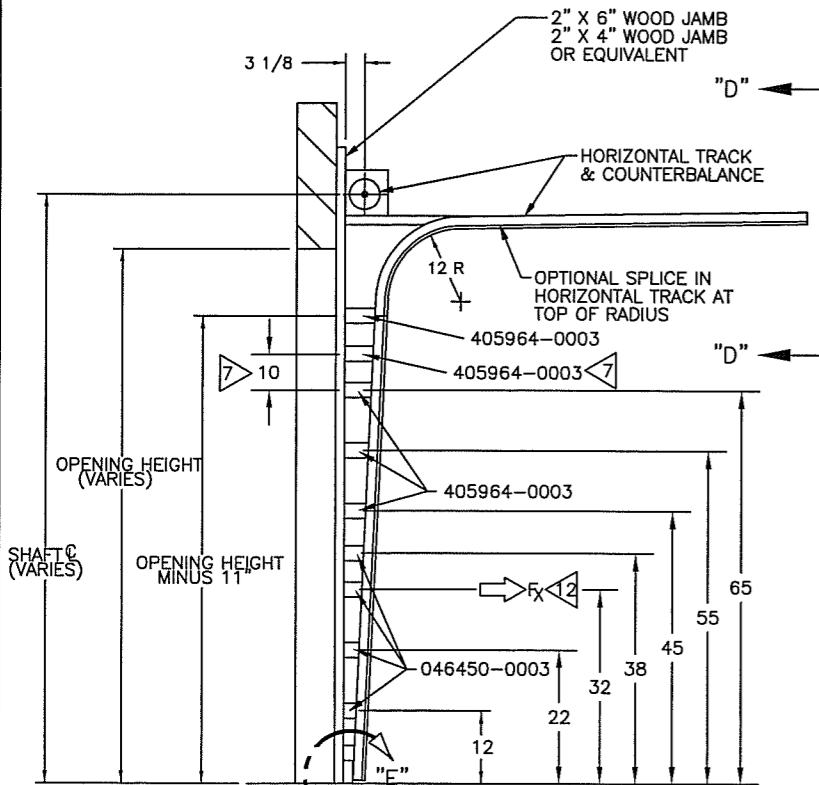


VIEW "D-D"
2" TRACK
.090 THK (VERTICAL)
.090 THK (HORIZONTAL)

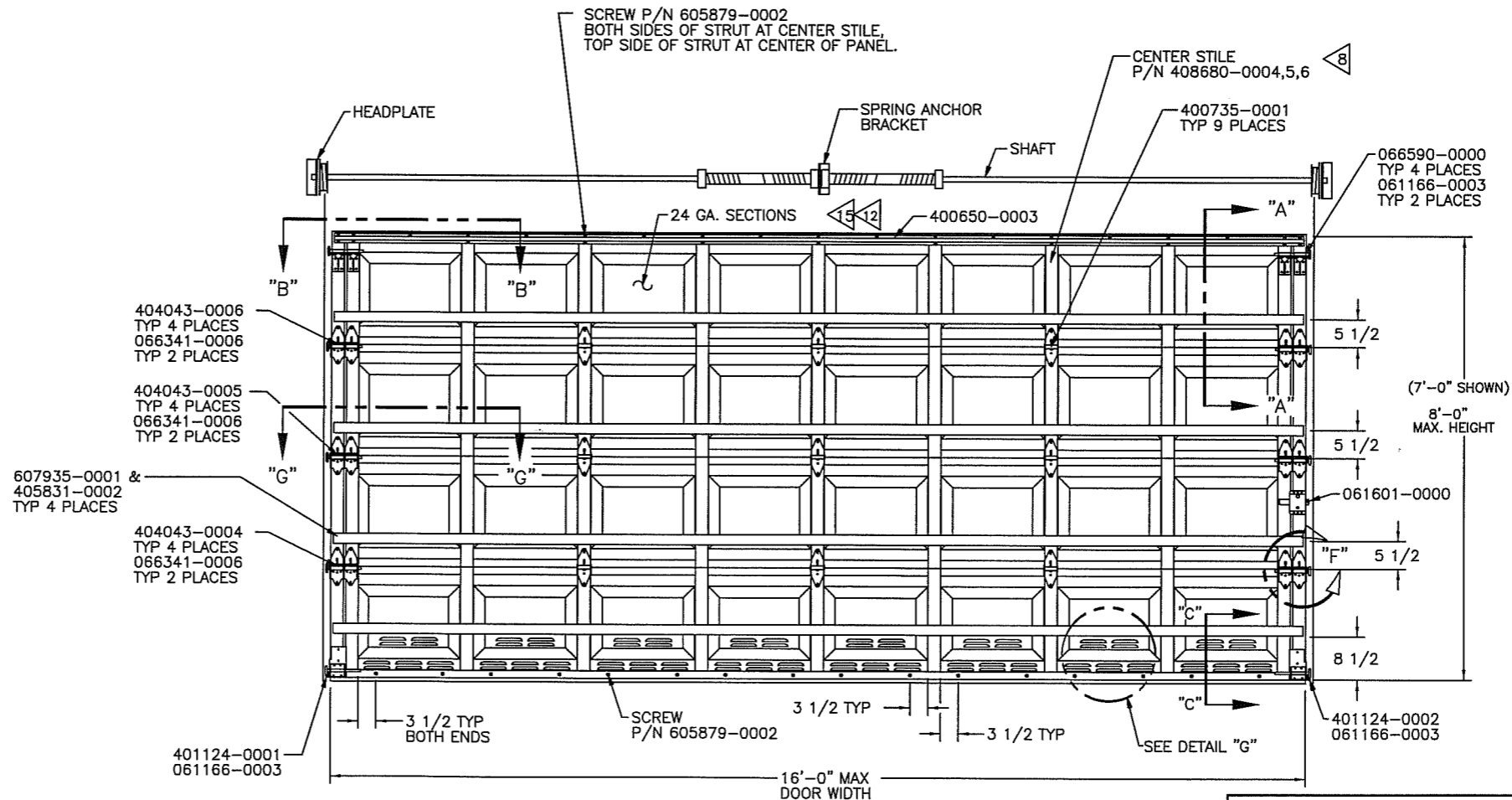
REVISIONS			
LETTER	DESCRIPTION	DATE	APPROVAL
D	REV PER EN 10781	5/8/01	RKH
E	REV PER EN 10790	5/29/01	RKH
F	REV FOR FL SUBMITTAL	5/18/07	MS



SECTION "A-A"
SCALE: 1/4



STANDARD TRACK DETAIL FOR 16'
SCALE: 1/16" = 1"



INTERIOR ELEVATION
SCALE: 1/16"=1"

ODC/GENIE EQUIVALENCE CHART	
ODC SERIES	GENIE SERIES
188	GDS 300
189	GDS 30 R

OVERHEAD DOOR CORPORATION
2501 S. STATE HWY 121, SUITE 200
LEWISVILLE, TX 75067
LeROY G. KRUPKE, P.E. #36580

LeRoy Krupke
5-22-07

SERIES 180 THRU 189
ARE EQUIVALENT CONSTRUCTION

SERIES 180 -- 46.7 PSF WINDLOAD								
DOOR WIDTH	CENTER STILE	END STILE	ROLLER SHAFT BRACKET	STRUTS/SECT.	ROLLER	VERTICAL TRACK GAGE	JAMB LOAD (# PER FT-HT)	HARDWARE
16'	7	DBL W/END CAP	NO	TUBE & HS3	2" X 5/8" 2" X 7/16"	.090"	392	STD. & HVY DUTY

THE DRAWING AND/OR TECHNICAL INFORMATION ON THIS SHEET IS THE PROPERTY OF OVERHEAD DOOR CORPORATION OR ITS SUBSIDIARY AND IS LOANED IN CONFIDENCE FOR ENGINEERING AND MUTUAL ASSISTANCE PURPOSES ONLY, AND MAY NOT BE REPRODUCED OR USED TO MANUFACTURE ANYTHING DISCLOSED HEREON WITHOUT THE EXPRESS PERMISSION OF OVERHEAD DOOR CORPORATION WHICH MAY RECALL THIS SHEET AT ANY TIME.

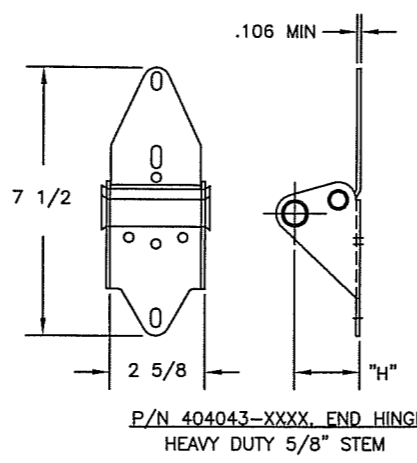
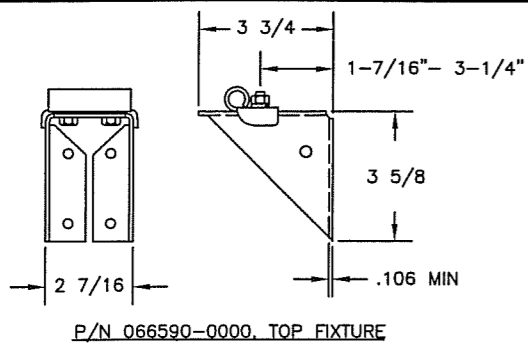
UNLESS OTHERWISE SPECIFIED		
DECIMAL DIMENSIONS	HALF DIMETERS	ANGLES ± 0° 30'
±.005	±.005	± 1/16"
±.002	±.002	± 1/16"

OVERHEAD DOOR CORPORATION		NAME	DATE
DRAWN BY:	G.J. MOORE	6/22/94	
CHECKED BY:	P. VESSELS	7/20/94	
APPROVED BY:	S. BOUCHER	7/20/94	

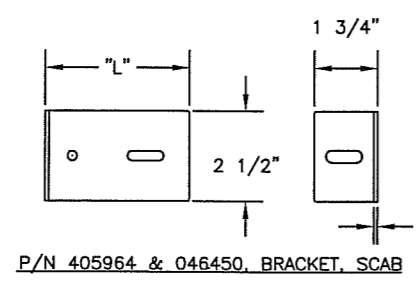
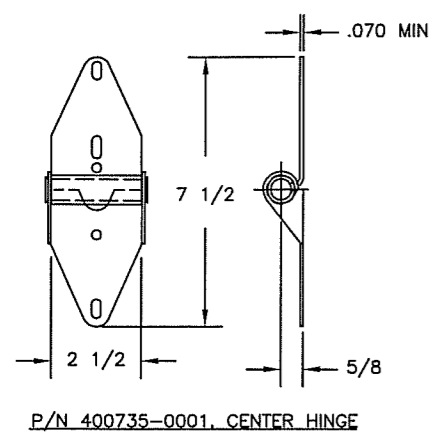
DRAWING TITLE:	
SERIES 180 RESIDENTIAL STEEL DOOR, +45/-49 PSF, 16'-0" MAX WIDTH	
DRAWING NUMBER	D-408804
SCALE:	3/8
SHEET	1 OF 2

NOTES

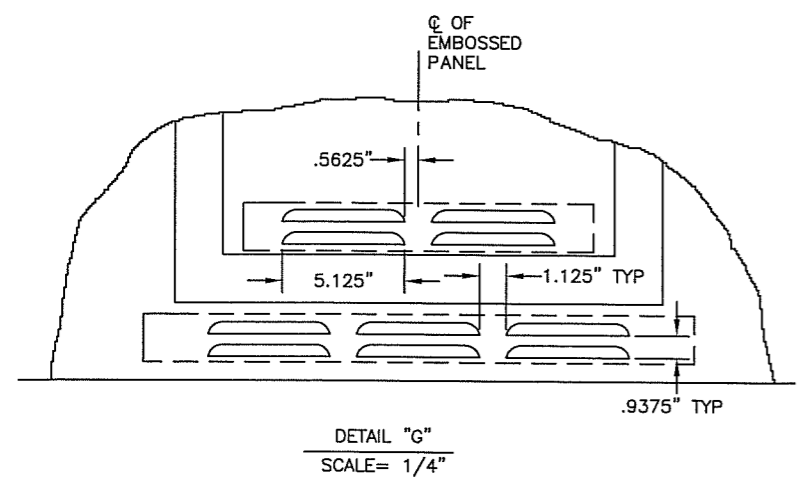
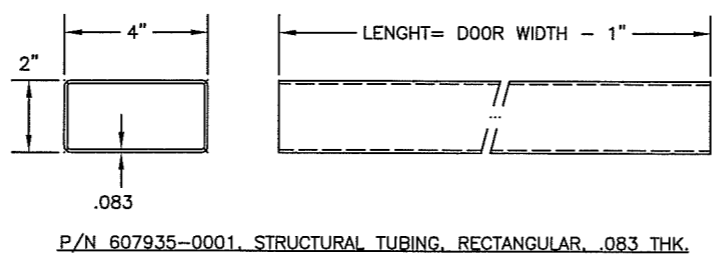
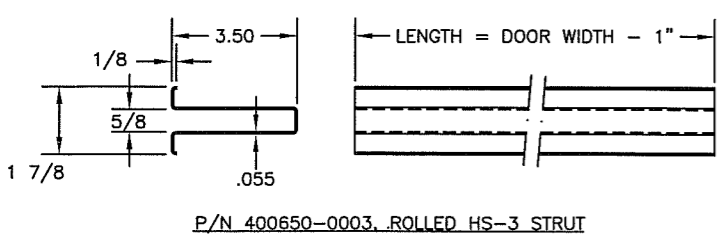
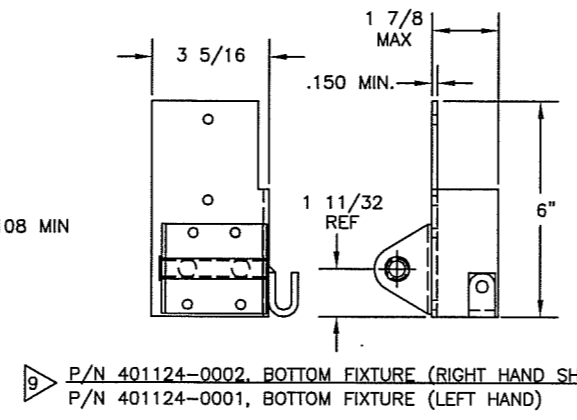
REVISIONS			
LETTER	DESCRIPTION	DATE	APPROVAL
D	REV PER EN 10781	5/8/01	RKH
E	REV PER EN 10790	5/29/01	RKH
F	REV FOR FL SUBMITTAL	5/18/07	<i>[Signature]</i>



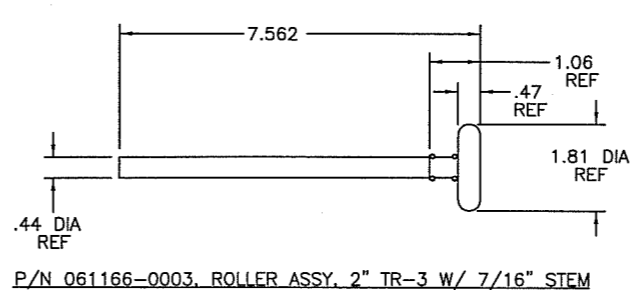
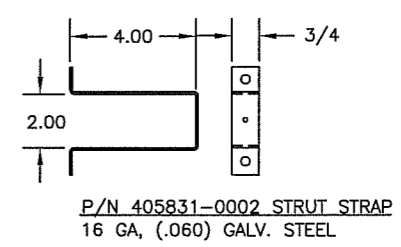
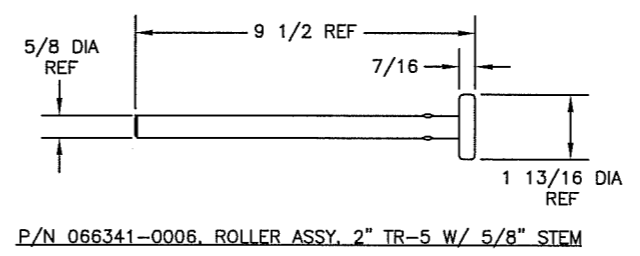
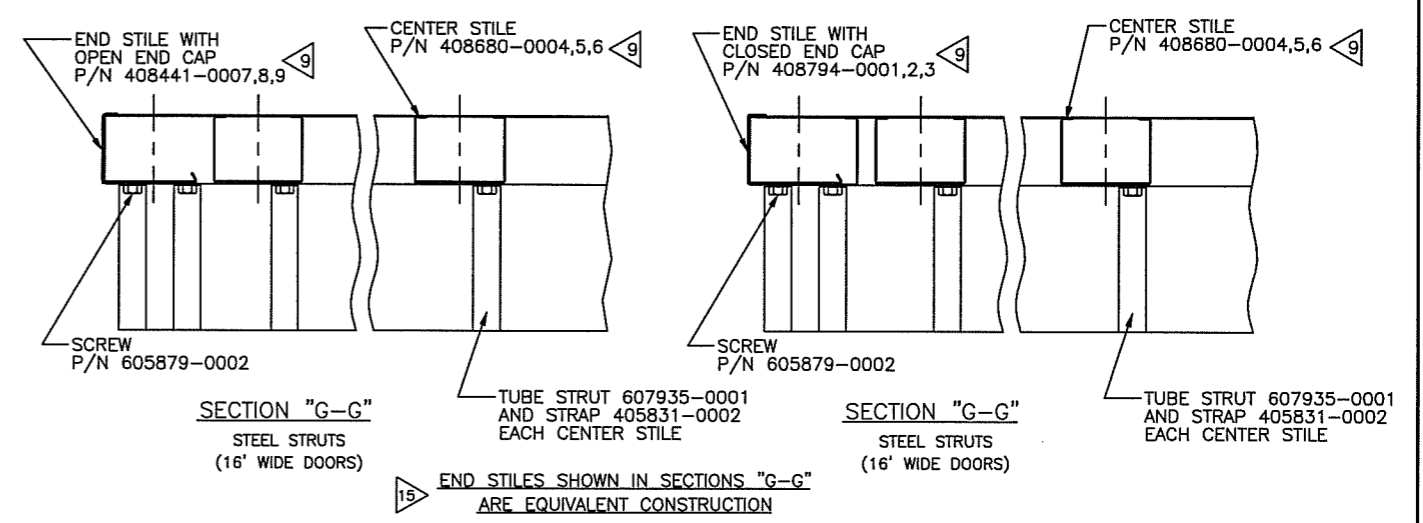
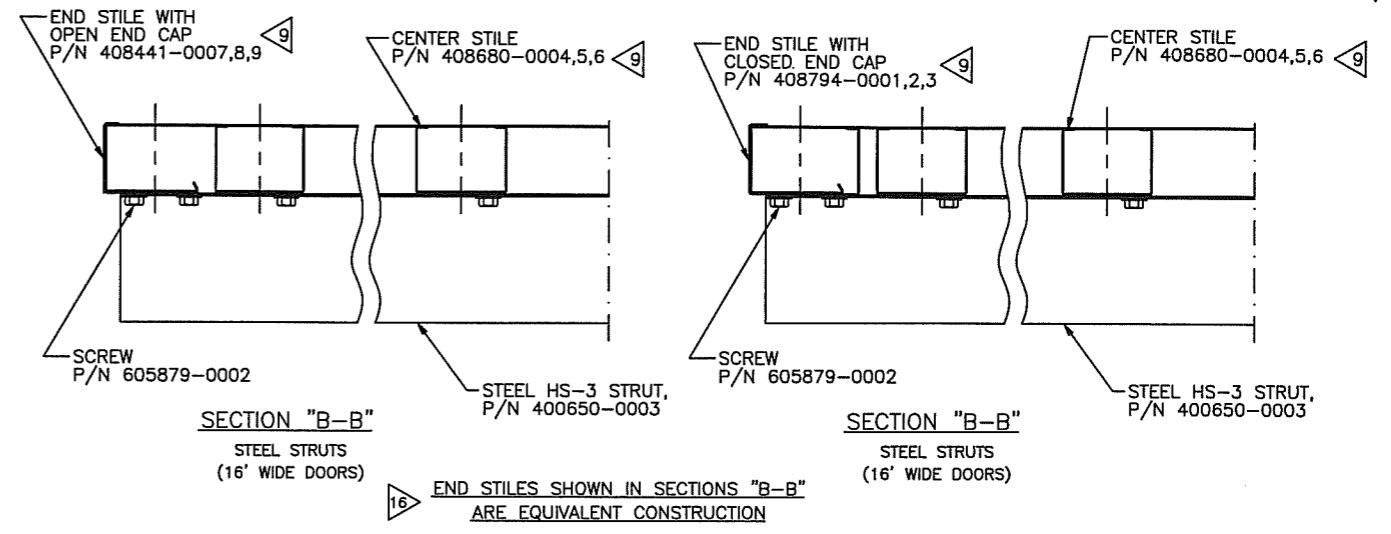
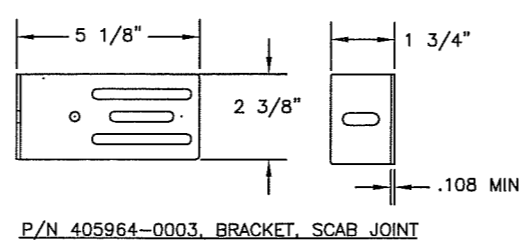
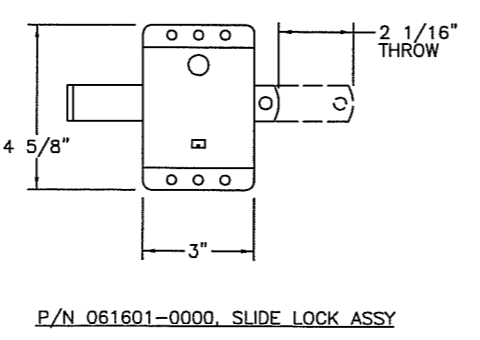
PART NUMBER	DIM"H" (REF)
404043-0004	1.34
404043-0005	1.59
404043-0006	1.84
404043-0007	2.09



PART. NUMBER	"L"
405964-0001	3-1/4"
046450-0003	4"



THE LOUVER IS AN OPTIONAL FEATURE AND MUST BE SPECIFIED BY DISTRIBUTOR



OVERHEAD DOOR CORPORATION
2501 S. STATE HWY 121, SUITE 200
LEWISVILLE, TX 75067
LeROY G. KRUPKE, P.E. #36580

[Signature]
5-22-07

THE DRAWING AND/OR TECHNICAL INFORMATION ON THIS SHEET IS THE PROPERTY OF OVERHEAD DOOR CORPORATION OR ITS SUBSIDIARY AND IS LOANED IN CONFIDENCE FOR ENGINEERING AND MUTUAL ASSISTANCE PURPOSES ONLY, AND MAY NOT BE REPRODUCED OR USED TO MANUFACTURE ANYTHING DISCLOSED HEREON WITHOUT THE EXPRESS PERMISSION OF OVERHEAD DOOR CORPORATION WHICH MAY RECALL THIS SHEET AT ANY TIME.

UNLESS OTHERWISE SPECIFIED	
DIMENSIONS ARE IN INCHES/TOLERANCES ON DECIMAL DIMENSIONS	HOLE DIAMETERS
.004 ± .003	UNDER .251 ± .004 - .003
.006 ± .003	.251 TO .500 ± .004 - .003
	OVER .500 ± .006 - .003
ANGLES ± 0' 30"	FRACTIONS ± 1/16"

OVERHEAD DOOR CORPORATION		GALLAS, TEXAS	
NAME	DATE	NAME	DATE
G.J. MOORE	6/22/94	G.J. MOORE	6/22/94
CHECKED BY:	APPROVED BY:	CHECKED BY:	APPROVED BY:
P. VESSELS	7/20/94	P. VESSELS	7/20/94
APPLIED FINISH:	UNIT OF MEASURE:	APPROVED BY:	DATE
NONE	EACH	S. BOUCHER	7/22/94

DRAWING TITLE:	
SERIES 180 RESIDENTIAL STEEL DOOR, +45/-49 PSF, 16'-0" MAX WIDTH	
DRAWING NUMBER	D-408804
SCALE:	3/8
SHEET	2 OF 2