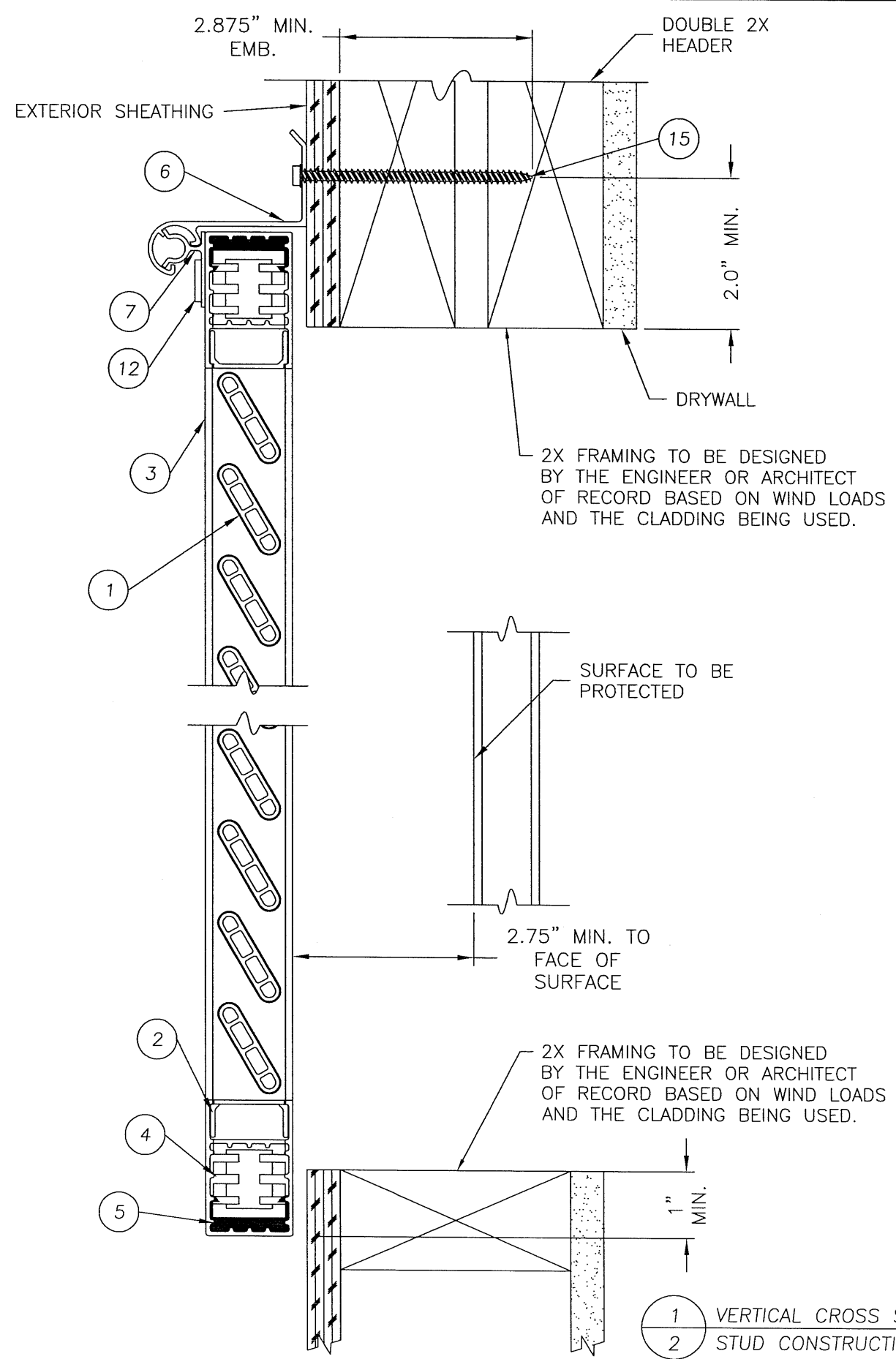


1 VERTICAL CROSS SECTION  
2 MASONRY CONSTRUCTION



1 VERTICAL CROSS SECTION  
2 STUD CONSTRUCTION

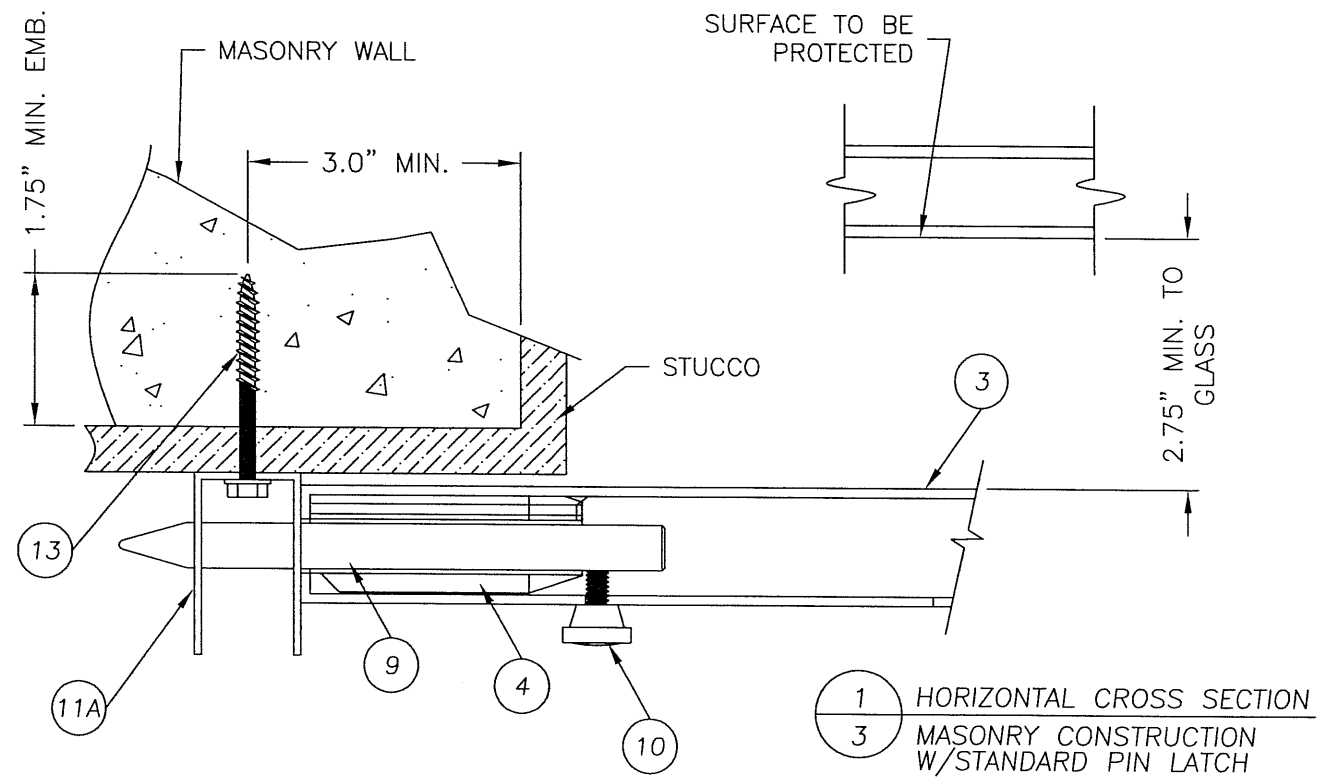
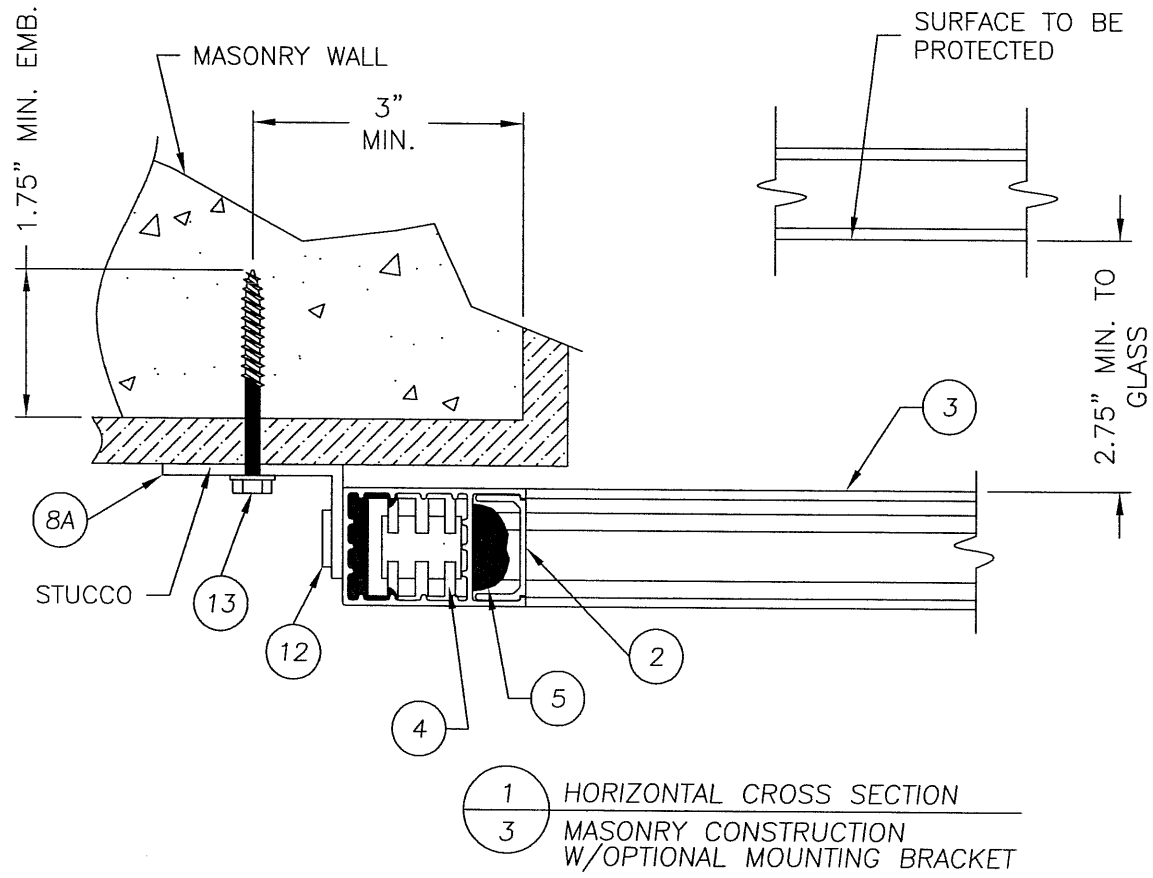
Documents Prepared By:  
**RW** BUILDING CONSULTANTS, INC.  
 P.O. Box 230 Valrico FL, 33596  
 Phone No.: 813.659.9197  
 Florida Board of Professional Engineers  
 Certificate of Authorization No. 9813  
*Wendell W. Hagey, P.E.* 3-1-07  
 Wendell W. Hagey, P.E. No. 54158

PRODUCT: SOUTHERN EXTRUSIONS  
 EXTRUDED ALUMINUM  
 BAHAMA HURRICANE SHUTTER  
 PART OR ASSEMBLY:  
 VERTICAL CROSS SECTIONS  
 MASONRY & STUD CONSTRUCTION

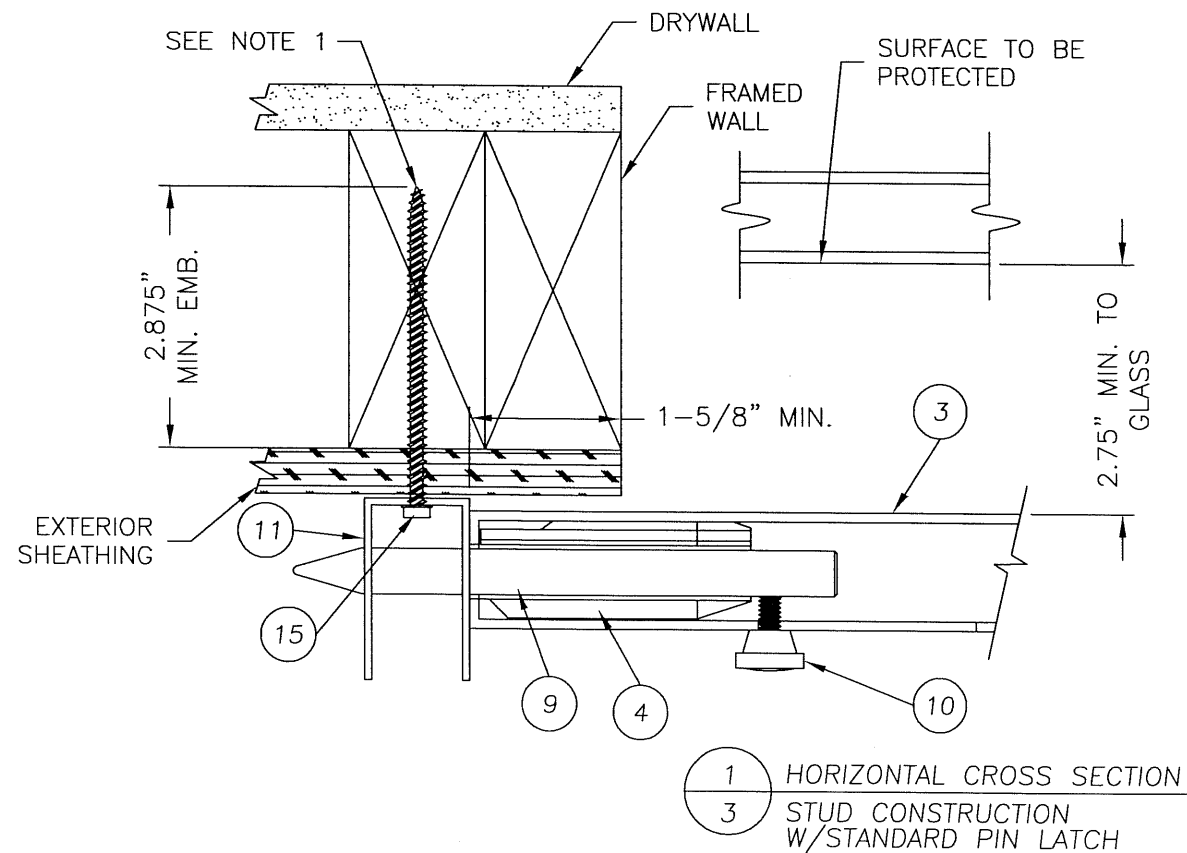
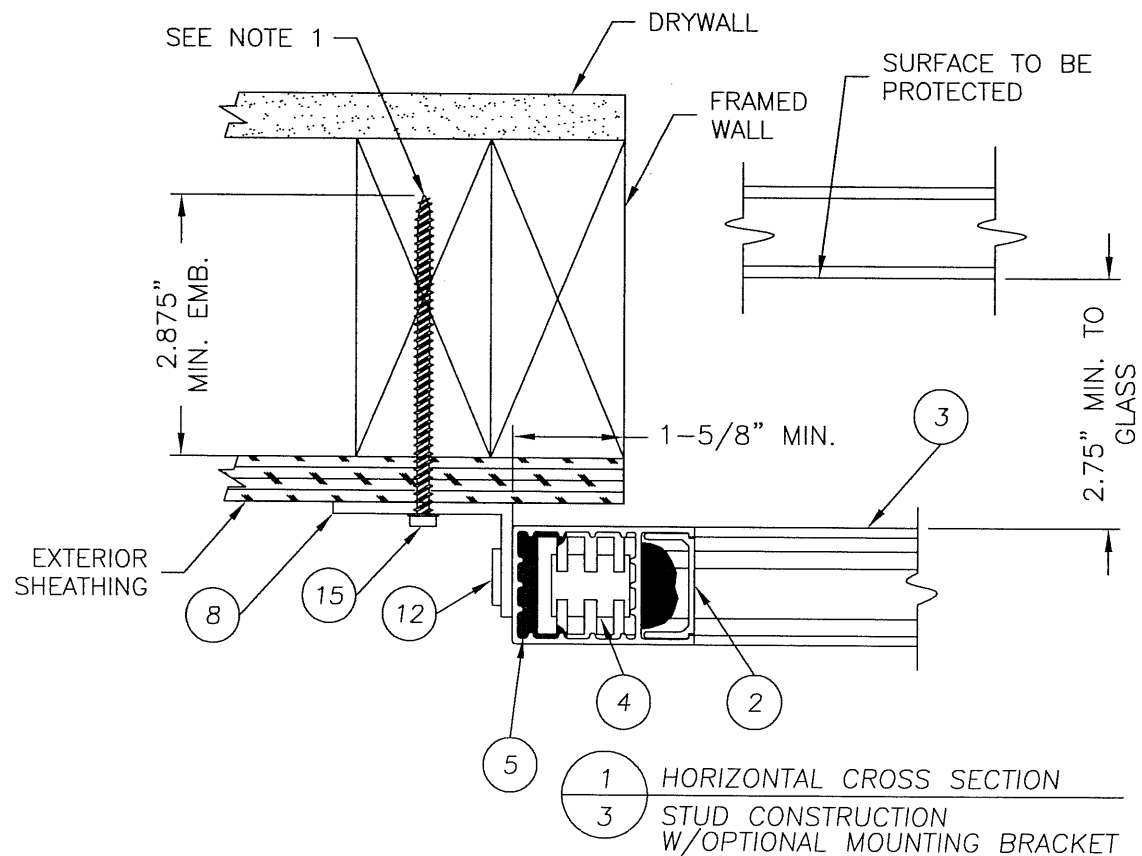
NO.	DATE	BY	REVISIONS
1	02/15/07	TL	REVISE TO INCLUDE "HVHZ"
1	11/18/05	EW	REVISE TO 2004 FBC

DATE: 10/30/03  
 SCALE: N.T.S.  
 DWG. BY: TJH  
 CHK. BY: RW  
 DRAWING NO.: FL-103  
 SHEET 2 OF 5

R:\A - Projects\Project Folders\Proj 1101 - 1200\p11129\DWG, RWBC Drawings\RWBC Drawings\FL-103-3-R2.dwg, Model



NOTE 1:  
INSTALLERS SHALL INSURE THE SCREWS INSTALLED INTO STUD WALL CONSTRUCTION DO NOT FALL ON STUD INTERFACE JOINTS



Documents Prepared By:

RW BUILDING CONSULTANTS, INC.  
P.O. Box 230 Valrico FL, 33595  
Phone No.: 813.659.9197  
Florida Board of Professional Engineers  
Certificate of Authorization No. 9813  
Wendell W. Harvey, P.E. No. 54158  
3-1-07

PRODUCT:  
SOUTHERN EXTRUSIONS  
EXTRUDED ALUMINUM  
BAHAMA HURRICANE SHUTTER  
PART OR ASSEMBLY:  
HORIZONTAL CROSS SECTIONS  
MASONRY & STUD CONSTRUCTION

NO.	DATE	REVISIONS	BY	TL	EW
2	02/15/07	REVISE TO INCLUDE "HVHZ"			
1	11/18/05	REVISE TO 2004 FBC			

DATE: 10/30/03

SCALE: N.T.S.

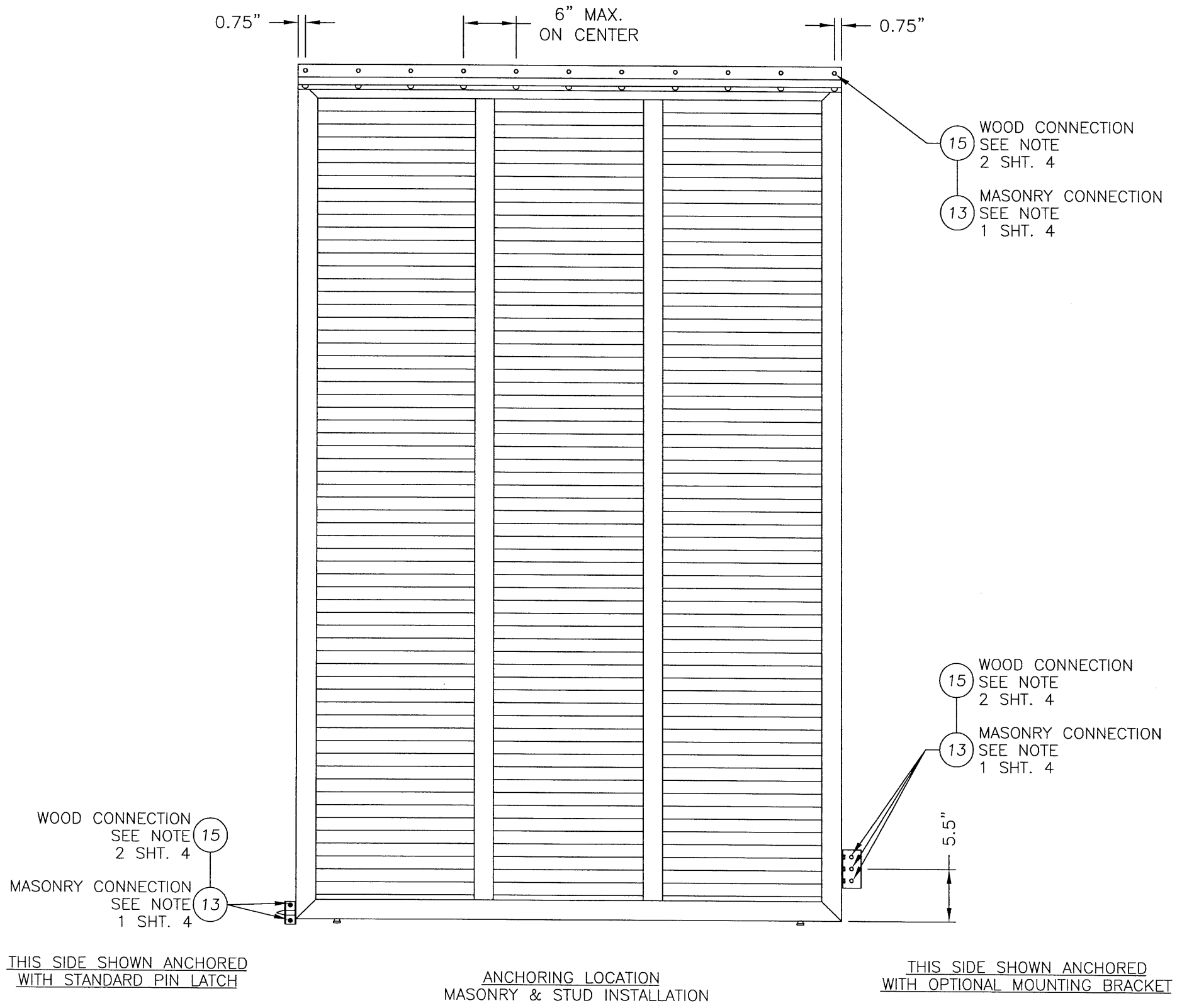
DWG. BY: TJH

CHK. BY: TJH

DRAWING NO.:

FL-103

SHEET 3 OF 5



WOOD CONNECTION  
SEE NOTE  
2 SHT. 4

MASONRY CONNECTION  
SEE NOTE  
1 SHT. 4

THIS SIDE SHOWN ANCHORED  
WITH STANDARD PIN LATCH

ANCHORING LOCATION  
MASONRY & STUD INSTALLATION

THIS SIDE SHOWN ANCHORED  
WITH OPTIONAL MOUNTING BRACKET

- NOTES:
1. WHEN ANCHORING THE SHUTTER TO MASONRY USE (2) OF ITEM #13, A 1/4" x 2 1/4" RAWL TAPPER WHEN ANCHORING THE SIDES USING BRACKET #8A. USE THE TWO OUTER HOLES, DO NOT USE CENTER MOUNTING HOLE IN BRACKET FOR MASONRY.
  2. WHEN ANCHORING THE SHUTTER TO A STUD WALL USE (3) OF ITEM #15, A #12 x 3-1/2" SHEET METAL SCREW.

15 WOOD CONNECTION  
SEE NOTE  
2 SHT. 4

13 MASONRY CONNECTION  
SEE NOTE  
1 SHT. 4

15 WOOD CONNECTION  
SEE NOTE  
2 SHT. 4

13 MASONRY CONNECTION  
SEE NOTE  
1 SHT. 4

Documents Prepared By:  
**RW** BUILDING CONSULTANTS, INC.  
 P.O. Box 230 Valrico FL 33595  
 Phone No.: 813.659.9197  
 Florida Board of Professional Engineers  
 Certificate Of Authorization No. 9813  
*Wendell W. Hoge* 3-1-07  
 Wendell W. Hoge, P.E. No. 54158

PRODUCT:  
 SOUTHERN EXTRUSIONS  
 EXTRUDED ALUMINUM  
 BAHAMA HURRICANE SHUTTER  
 PART OR ASSEMBLY:  
 ANCHORING LOCATIONS  
 MASONRY & STUD INSTALLATION

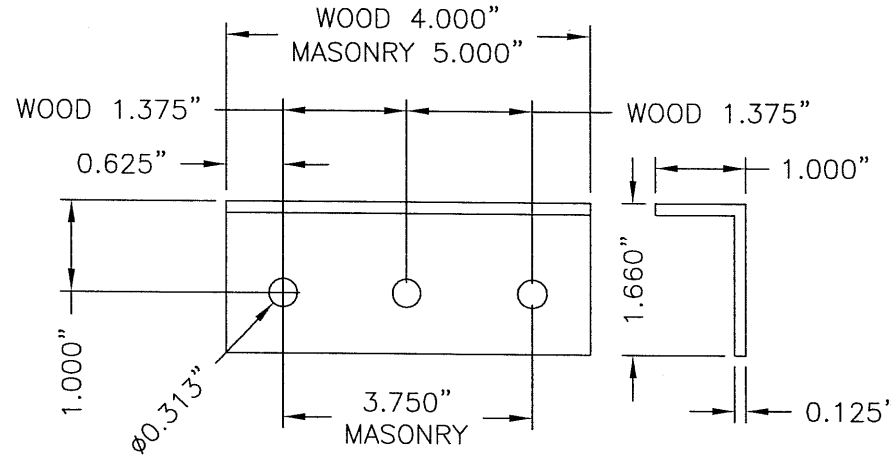
NO.	DATE	REVISIONS
2	02/15/07	REVISE TO INCLUDE "HVHZ"
1	11/18/05	REVISE TO 2004 FBC
		TL
		EW
		BY

DATE: 10/30/03  
 SCALE: N.T.S.  
 DWG. BY: TJH  
 CHK. BY: RW  
 DRAWING NO.: FL-103  
 SHEET 4 OF 5

© 2007 R.W. BUILDING CONSULTANTS INC.

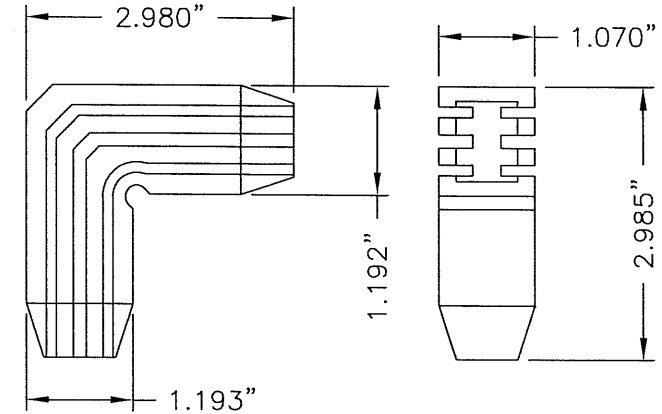
BILL OF MATERIALS

1	LOUVER 6063-T6 0.060"	ALUM.
2	LOUVER/INSERT 6063-T6 0.060"	ALUM.
3	STILE/RAIL 6063-T6 0.060"	ALUM.
4	EXTRUDED NYLON CORNER KEY	ALUM.
5	STRUCTURAL ADHESIVE	-
6	FEMALE HINGE	ALUM.
7	MALE HINGE	ALUM.
8	MOUNTING BRACKET WOOD	ALUM.
8A	MOUNTING BRACKET MASONRY	ALUM.
9	LOCKING PIN	ALUM.
10	THUMB SCREW	STEEL
11	LATCH WOOD	ALUM.
11A	LATCH MASONRY	ALUM.
12	3/16" DIA. POP RIVET	ALUM.
13	1/4" X 2 1/4" HEX HEAD RAWL TAPPER	STEEL
14	VERTICAL SUPPORT SLAT	ALUM.
15	#12 X 3-1/2" HEX HEAD SHEET METAL SCREW	STEEL

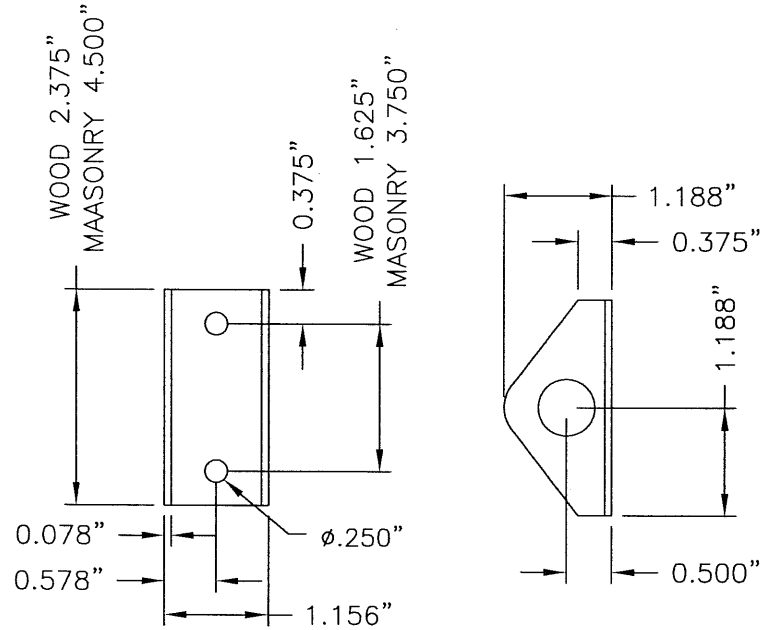


8 MOUNTING BRACKET - WOOD  
EXTRUDED ALUMINUM  
6063-T6

8A MOUNTING BRACKET - MASONRY  
(USE OUTSIDE HOLES ONLY)  
EXTRUDED ALUMINUM  
6063-T6

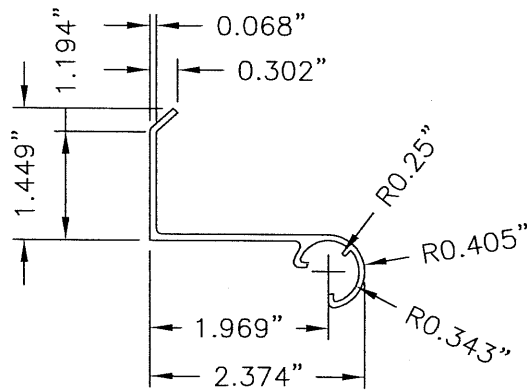


4 EXTRUDED NYLON CORNER KEY

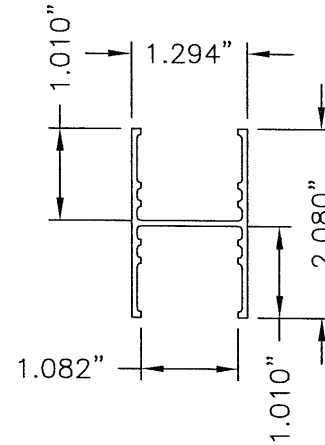


11 LATCH WOOD  
ALUMINUM 6063-T6

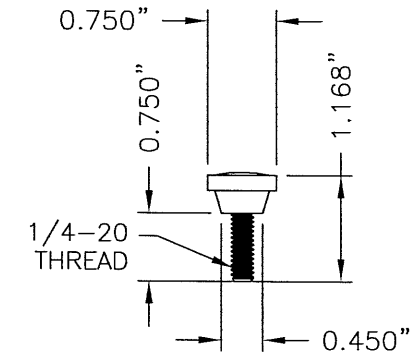
11A LATCH MASONRY  
ALUMINUM 6063-T6



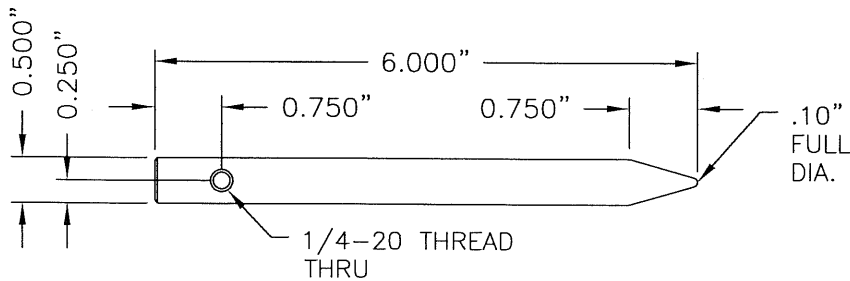
6 FEMALE HINGE  
EXTRUDED ALUMINUM  
6063-T6



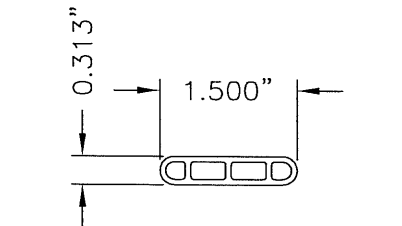
14 VERTICAL SUPPORT SLAT  
ALUMINUM 6063-T6



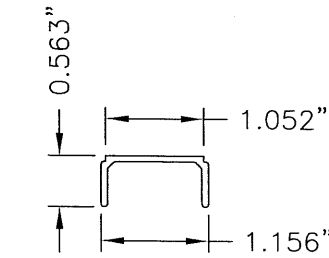
10 THUMB SCREW  
STEEL



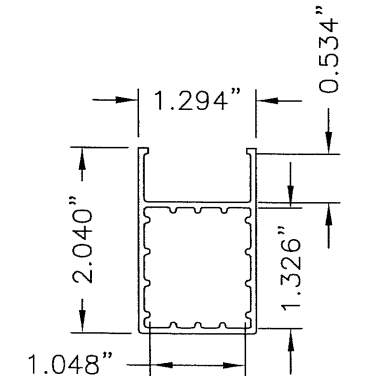
9 LOCKING PIN  
ALUMINUM 6063-T6



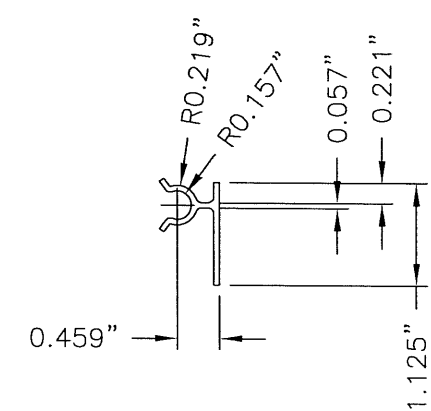
1 LOUVER  
EXTRUDED ALUMINUM  
6063-T6  
0.060" TYP. WALL THK.



2 LOUVER/INSERT  
EXTRUDED 6063-T6  
0.060" TYP. WALL THK.



3 STILE/RAIL  
EXTRUDED ALUMINUM  
6063-T6  
0.060" TYP. WALL THK.



7 MALE HINGE  
EXTRUDED ALUMINUM  
6063-T6

Documents Prepared By:

RW BUILDING CONSULTANTS, INC.  
P.O. Box 230 Vairico FL 33595  
Phone No.: 813.659.9197  
Florida Board of Professional Engineers  
Certificate of Authorization No. 9813  
Wendell W. Haney P.E. 3-1-07  
No. 54158

PRODUCT:  
SOUTHERN EXTRUSIONS  
EXTRUDED ALUMINUM  
BAHAMA HURRICANE SHUTTER  
PART OR ASSEMBLY:  
BILL OF MATERIALS  
& COMPONENTS

NO.	DATE	REVISIONS	BY
2	02/15/07	REVISE TO INCLUDE "HVHZ"	TL
1	11/18/05	REVISE TO 2004 FBC	EW

DATE: 10/30/03  
SCALE: N.T.S.  
DWG. BY: TJH  
CHK. BY: TJH  
DRAWING NO.: FL-103  
SHEET 5 OF 5