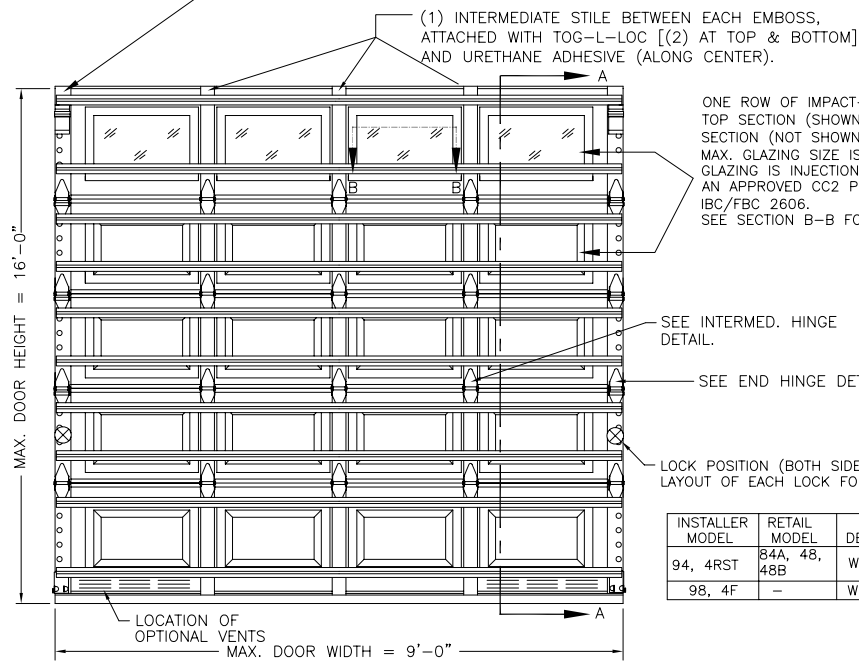


CLOPAY MODELS 84A, 94, 98
 IDEAL MODELS: 4RST, 4F
 HOLMES MODELS: 48, 48B

END STILES ATTACHED TO DOOR SKIN WITH PATENTED TOG-L-LOC SYSTEM. END STILES HAVE (2) TOG-L-LOC CLINCHES AT TOP AND (2) AT BOTTOM. ALONG THE FRONT FACE:

- 21" SECTIONS HAVE (6) TOG-L-LOC CLINCHES;
- 18" SECTIONS HAVE (4) TOG-L-LOC CLINCHES.



ONE ROW OF IMPACT-RESISTANT GLAZING IN EITHER TOP SECTION (SHOWN) OR NEXT-TO-THE-TOP SECTION (NOT SHOWN). MAX. GLAZING SIZE IS 18-1/2" x 11". GLAZING IS INJECTION MOLDED GE LEXAN SLX2432T, AN APPROVED CC2 PLASTIC IN ACCORDANCE WITH IBC/FBC 2606. SEE SECTION B-B FOR ASSEMBLY DETAILS.

SEE INTERMED. HINGE DETAIL.
 SEE END HINGE DETAIL.

LOCK POSITION (BOTH SIDES). SEE LAYOUT OF EACH LOCK FOR DETAILS.

INSTALLER MODEL	RETAIL MODEL	DESCRIPTION
94, 4RST	84A, 48, 48B	WOODGRAIN TEXTURE, RAISED PANEL, GALV. INTER. STILES
98, 4F	-	WOODGRAIN TEXTURE, FLUSH PANEL, GALV. INTER. STILES

SECTION B-B

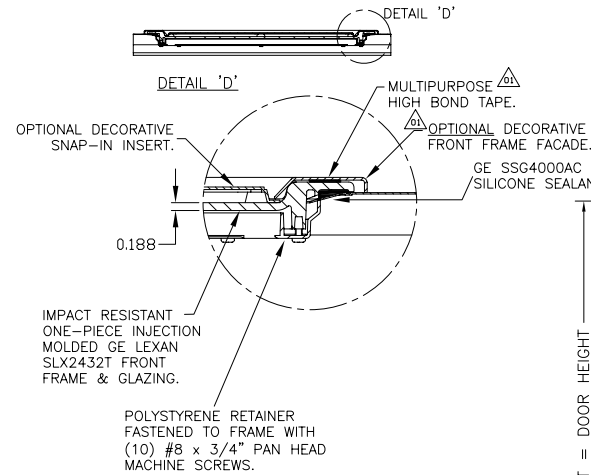


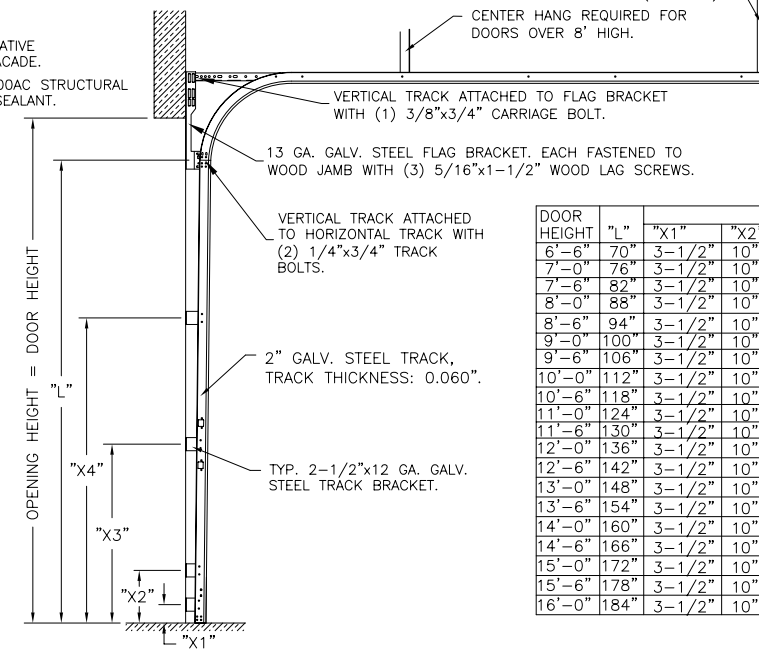
TABLE 1

DOOR HEIGHT	NUMBER OF SECTIONS*
6'0" TO 7'0"	4
7'6" TO 8'9"	5
9'0" TO 10'6"	6
10'9" TO 12'3"	7
12'6" TO 14'0"	8
14'3" TO 15'9"	9
16'0"	10

* SECTION ARE EITHER 18" OR 21" HIGH

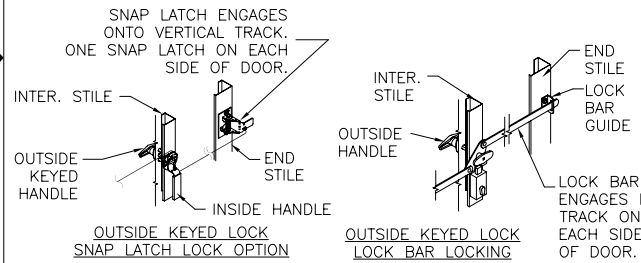
TRACK CONFIGURATION ABOVE THE DOOR OPENING DOES NOT AFFECT THE WIND LOAD RATING.

TRACK CONFIGURATION

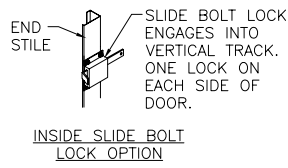


DOOR HEIGHT "L"	BRACKET PLACEMENTS							
	"X1"	"X2"	"X3"	"X4"	"X5"	"X6"	"X7"	"X8"
6'-6"	70"	3-1/2"	10"	35"	60"	-	-	-
7'-0"	76"	3-1/2"	10"	38"	66"	-	-	-
7'-6"	82"	3-1/2"	10"	34"	58"	-	-	-
8'-0"	88"	3-1/2"	10"	34"	58"	-	-	-
8'-6"	94"	3-1/2"	10"	34"	58"	82"	-	-
9'-0"	100"	3-1/2"	10"	34"	58"	82"	-	-
9'-6"	106"	3-1/2"	10"	34"	58"	82"	-	-
10'-0"	112"	3-1/2"	10"	34"	58"	82"	-	-
10'-6"	118"	3-1/2"	10"	34"	58"	82"	106"	-
11'-0"	124"	3-1/2"	10"	34"	58"	82"	106"	-
11'-6"	130"	3-1/2"	10"	34"	58"	82"	106"	-
12'-0"	136"	3-1/2"	10"	34"	58"	82"	106"	-
12'-6"	142"	3-1/2"	10"	34"	58"	82"	106"	130"
13'-0"	148"	3-1/2"	10"	34"	58"	82"	106"	130"
13'-6"	154"	3-1/2"	10"	34"	58"	82"	106"	130"
14'-0"	160"	3-1/2"	10"	34"	58"	82"	106"	130"
14'-6"	166"	3-1/2"	10"	34"	58"	82"	106"	130" 154"
15'-0"	172"	3-1/2"	10"	34"	58"	82"	106"	130" 154"
15'-6"	178"	3-1/2"	10"	34"	58"	82"	106"	130" 154"
16'-0"	184"	3-1/2"	10"	34"	58"	82"	106"	130" 154"

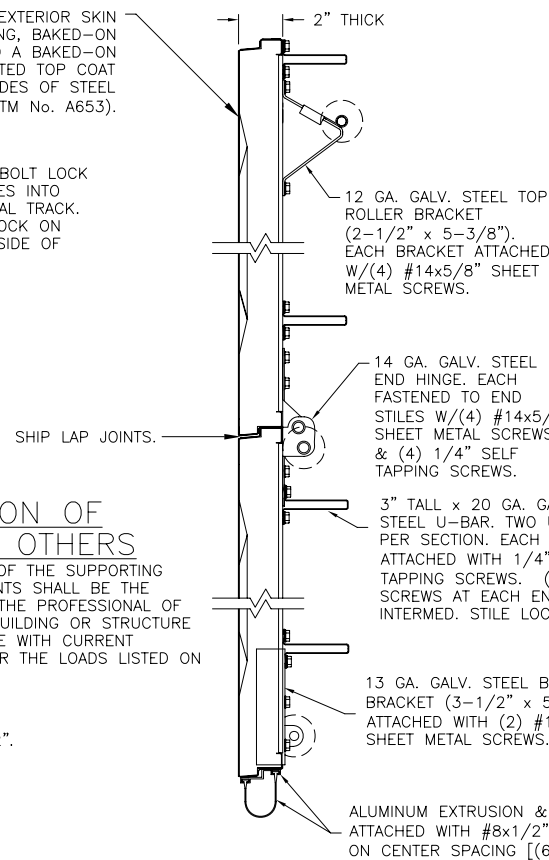
INSIDE ELEVATION



24 GA. DDS STEEL EXTERIOR SKIN WITH G-40 GALVANIZING, BAKED-ON PRIMER AND A BAKED-ON POLYESTER PAINTED TOP COAT APPLIED TO BOTH SIDES OF STEEL SKIN. (ASTM No. A653).



SECTION A-A



PREPARATION OF JAMBS BY OTHERS

NOTE: THE DESIGN OF THE SUPPORTING STRUCTURAL ELEMENTS SHALL BE THE RESPONSIBILITY OF THE PROFESSIONAL OF RECORD FOR THE BUILDING OR STRUCTURE AND IN ACCORDANCE WITH CURRENT BUILDING CODES FOR THE LOADS LISTED ON THIS DRAWING.

JAMB TO SUPPORTING STRUCTURE ATTACHMENT

NOTES:

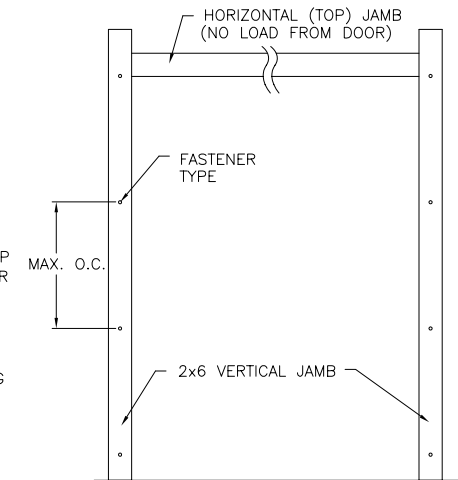
1. ALL THE LOAD FROM THE DOOR IS TRANSFERRED TO THE TRACK AND THEN FROM THE TRACK TO THE 2x6 VERTICAL SYP (GRADE #2 OR BETTER) JAMBS. NO LOAD FROM THE DOOR IS TRANSFERRED TO THE HORIZONTAL (TOP) JAMB.
2. ALL JAMB FASTENERS MAY BE (BUT ARE NOT REQUIRED TO BE) COUNTERSUNK TO PROVIDE A FLUSH MOUNTING SURFACE.
3. A 1/3 STRESS INCREASE FOR WIND LOAD WAS NOT USED IN THE CALCULATION OF ALLOWABLE LOADS FOR ANCHORS AND FASTENERS FOR STEEL, CONCRETE AND MASONRY.

WOOD FRAME BUILDINGS

STUD WALLS OF DOOR OPENING SHALL BE FRAMED SOLID BY NOT LESS THAN (3) 2x6 PRESSURE TREATED SYP (GRADE #2 OR BETTER) WOOD STUDS OF A STRESS GRADE NOT LESS THAN 1200 PSI NOMINAL EXTREME FIBER STRESS IN BENDING (F_b). STUD WALLS TO BE CONTINUOUS FROM FOOTING TO TIE BEAMS.

BLOCK WALL OR CONCRETE

2x6 SYP (GRADE #2 OR BETTER) WOOD JAMB SHALL BE ANCHORED TO GROUT REINFORCED BLOCK WALL OR CONCRETE COLUMN. BLOCK WALL CELLS SHALL BE FILLED WITH CONCRETE AND REINFORCED WITH REINFORCING BARS EXTENDING INTO THE FOOTING AND INTO TIE BEAMS. ALL BARS SHALL BE CONTINUOUS FROM THE TIE BEAMS TO FOOTING PER BLOCK WALL OR CONCRETE COLUMN. BLOCK WALLS AND CONCRETE COLUMNS TO BE DESIGNED BY THE BUILDING ENGINEER OR ARCHITECT OF RECORD.



2x6 JAMB TO SUPPORTING STRUCTURE ATTACHMENT

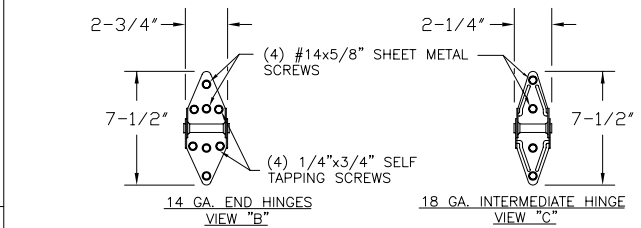
(NOT TO BE USED FOR ATTACHMENT OF TRACK BRACKETS)

BUILDING TYPE	FASTENER TYPE	MAXIMUM * ON CENTER DISTANCE BETWEEN FASTENERS	STEEL WASHERS REQUIRED?
C-90 BLOCK (HOLLOW OR GROUTED)	1/4" x 3" (1-1/4" EMBED) ITW TAPCON CONCRETE ANCHOR (2-1/2" MIN. EDGE DISTANCE)	10-1/2"	1" O.D.
3,000 PSI MIN. CONCRETE	1/4" x 4" (1-3/4" EMBED) ITW TAPCON CONCRETE ANCHOR (2-1/2" MIN. EDGE DISTANCE)	24"	1" O.D.
3,000 PSI MIN. CONCRETE	1/2" x 4" (2-1/4" EMBED) SIMPSON STRONG-TIE WEDGE-ALL WEDGE ANCHOR (2" MIN. EDGE DISTANCE)	21-1/2"	INCLUDED
WOOD FRAME	1/2" x 4" (1-5/8" EMBED) LAG SCREW (ASTM A307, GRADE A) (2-1/2" MIN. EDGE DISTANCE)	24"	1" O.D.
2,000 PSI MIN. CONCRETE	1/2" x 4" (2-1/2" EMBED) WEJ-IT SLEEVE ANCHOR (2-1/2" MIN. EDGE DISTANCE)	24"	INCLUDED

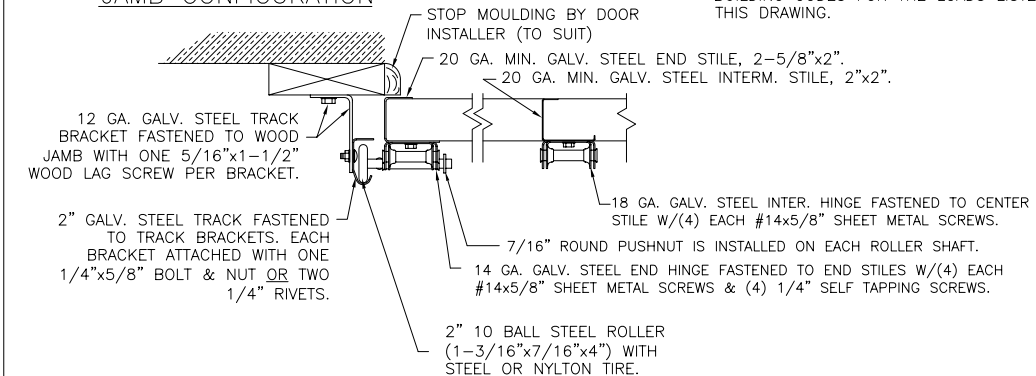
* - FIRST ANCHOR/SCREW STARTING FROM BOTTOM AT NO MORE THAN HALF OF MAXIMUM ON CENTER DISTANCE. HIGHEST ANCHOR/SCREW INSTALLED AT LEAST AS HIGH AS THE DOOR OPENING HEIGHT.

DESIGN ENGINEER: MARK WESTERFIELD, P.E.
 FLORIDA P.E. #48495, NC P.E. #23832
 TEXAS P.E. #91513

DESIGN LOADS: +48.0 PSF & -54.0 PSF.
 TEST LOADS: +72.0 PSF & -81.0 PSF.



JAMB CONFIGURATION



Clopay
 Building Products
 Company

TOLERANCES
 Unless Stated Otherwise
 .00 = ±.03
 .01 = ±.015
 .0000 = ±.007
 Degrees = ±1/2'

CLOPAY BUILDING PRODUCTS
 8585 DUKE BLVD.
 MASON, OHIO 45040
 (513) 770-4800

MANUFACTURING PRODUCT CODE: MPC: PAN-2F143
 DATE: 10/23/06
 DRAWN BY: SH
 CHECKED BY: SH

PAGE: 1 OF 1
 MAX. SIZE: 9'0"W x 16'0"H

DESCRIPTION: SINGLE CAR W8 PAN DOOR WITH IMPACT RESISTANT LITES
 DRAWING NUMBER: B 103547
 VER: IBC