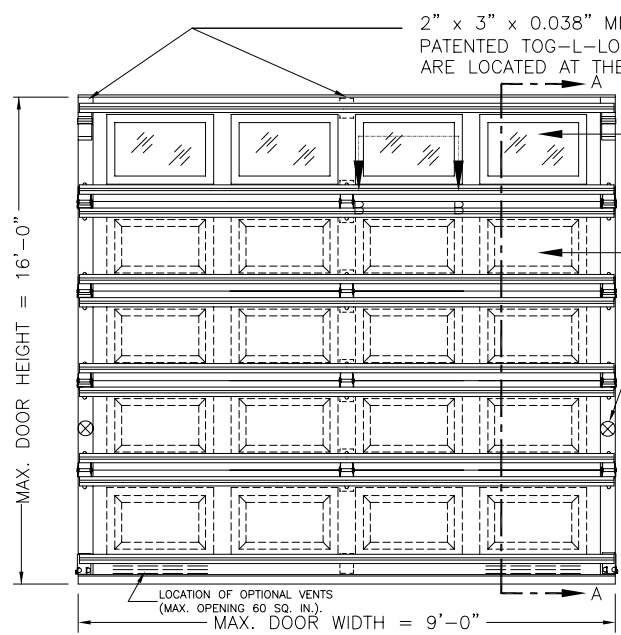
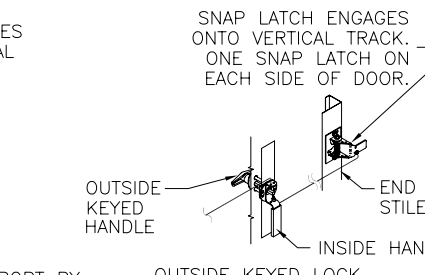
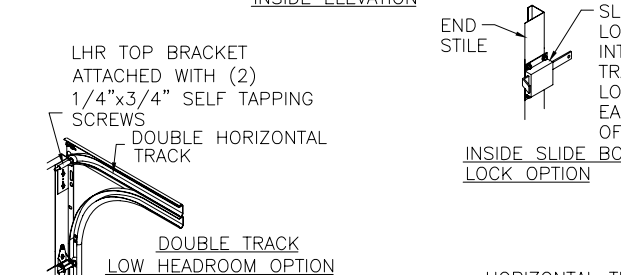
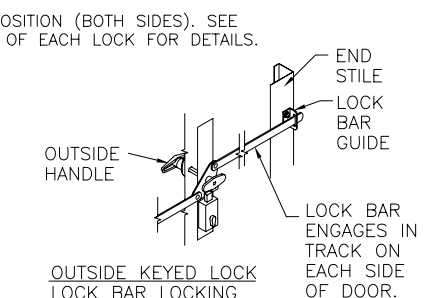


|        |                     |                       |            |
|--------|---------------------|-----------------------|------------|
| MODELS | 24 GA               | 27 GA                 | 27 GA EXT  |
| CLOPAY | 4400, 4401          | 4300, 4301, HDG, HDGF | 4310, HDGL |
| HOLMES | ---                 | 66, 66G, 68, 68G      | 67, 67G    |
| IDEAL  | ---                 | SP20, SF20            | SE20       |
|        | SHORT PANEL / FLUSH |                       | LONG PANEL |

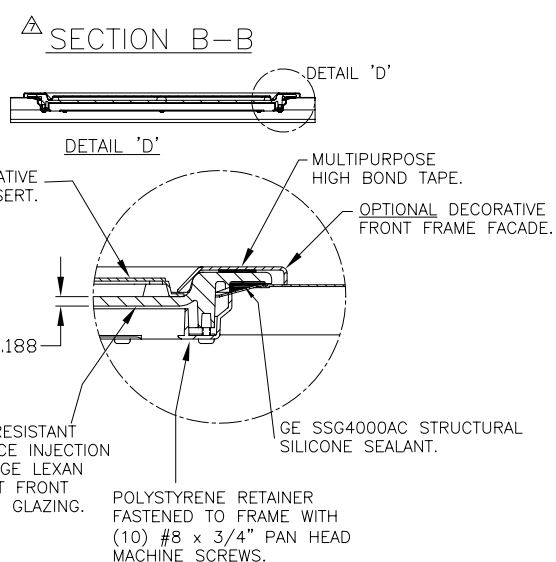
| REV | DATE     | DESCRIPTION                            |
|-----|----------|----------------------------------------|
| 4   | 9/2003   | DEL M/N 2400/2401; ADD LHR OPTION      |
| 5   | 11/2003  | ADD 28 KSI MIN. YIELD FOR SKIN         |
| 6   | 7/2005   | UPDATED CODE AND FOAM REFERENCES       |
| 7   | 9/2007   | ADDED OPTIONAL IMPACT RESISTANT LITES  |
| 8   | 10/2007  | CORRECTED ROLLER DETAIL                |
| 9   | 05/12/08 | ADDED MPC INFO AND HDGF, 66G, 67G, 68G |
| 10  | 12/10/08 | MAX HT WAS 12'-0.                      |



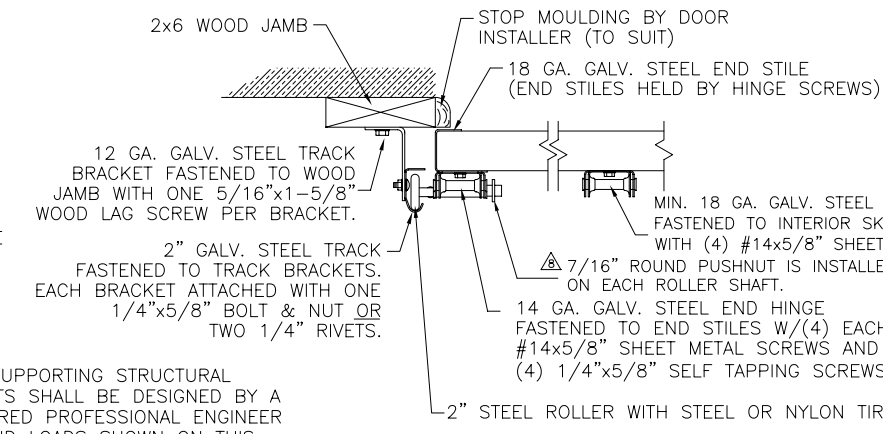
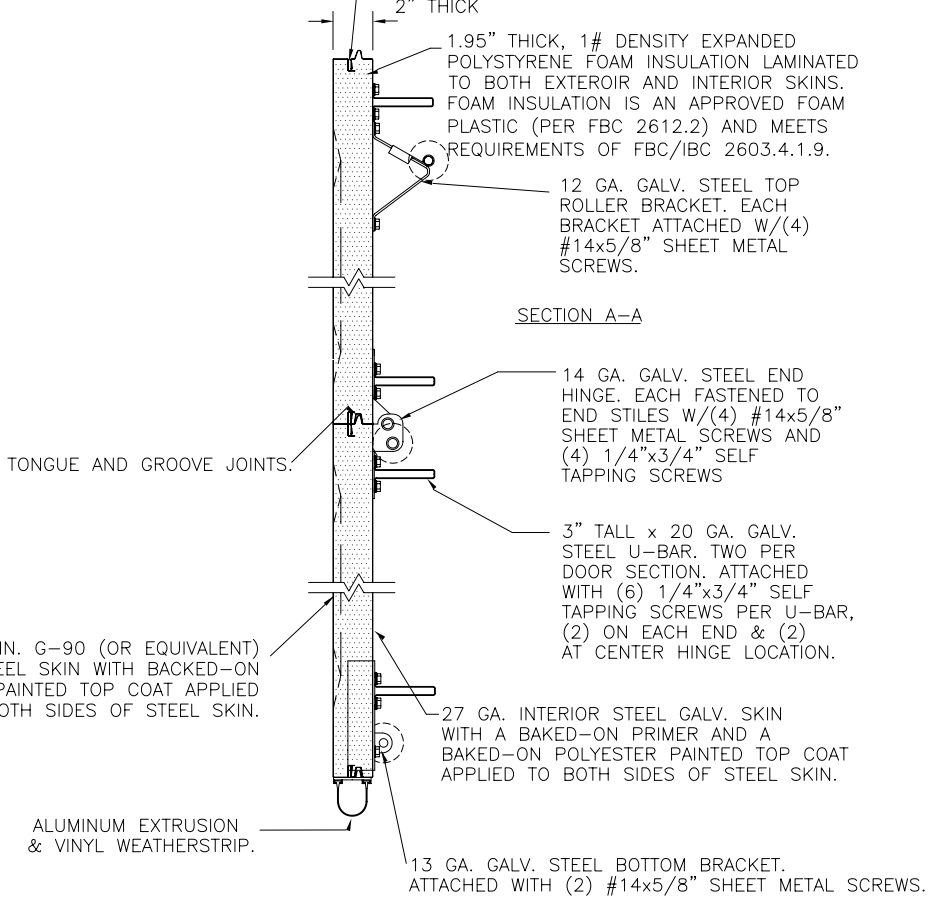
OPTIONAL: ONE ROW OF IMPACT-RESISTANT GLAZING IN EITHER TOP SECTION (SHOWN) OR NEXT-TO-THE-TOP SECTION (NOT SHOWN). MAX. GLAZING SIZE IS 18-1/2" x 11". GLAZING IS INJECTION MOLDED GE LEXAN SLX2432T, AN APPROVED CC2 PLASTIC IN ACCORDANCE WITH IBC/FBC 2606. SEE SECTION B-B FOR ASSEMBLY DETAILS.



| INSTALLER MODEL | RETAIL MODEL  | DESCRIPTION                          |
|-----------------|---------------|--------------------------------------|
| 4300            | HDG, 66, 66G  | 27 GA. EXT. SKIN; SHORT RAISED PANEL |
| 4400            | N/A           | 24 GA. EXT. SKIN; SHORT RAISED PANEL |
| 4401            | N/A           | 24 GA. EXT. SKIN; FLUSH PANEL        |
| 4301            | 68, 68G       | 27 GA. EXT. SKIN; FLUSH PANEL        |
| 4310            | HDGL, 67, 67G | 27 GA. EXT. SKIN; WIDE RAISED PANEL  |



SILICONE FILLED CHANNEL SEPARATES FRONT AND BACK SKIN OF DOOR



PREPARATION OF JAMBS BY OTHERS.

NOTE: SUPPORTING STRUCTURAL ELEMENTS SHALL BE DESIGNED BY A REGISTERED PROFESSIONAL ENGINEER FOR WIND LOADS SHOWN ON THIS DRAWING.

THE 2x6 VERTICAL WOOD JAMBS ARE TO BE GRADE 2 OR BETTER YELLOW PINE. NO LOAD IS TRANSFERRED TO THE HORIZONTAL (TOP) JAMB. ALL JAMB FASTENERS MAY BE (BUT NOT REQUIRED) COUNTERSUNK TO PROVIDE A FLUSH MOUNTING SURFACE.

VERTICAL JAMB ATTACHMENT (WOOD FRAME BUILDINGS): 1/2"x3" LAG SCREWS ON 24" CENTERS. 1" O.D. WASHER REQUIRED. LAG SCREWS MAY BE COUNTERSUNK (BUT NOT REQUIRED) TO PROVIDE A FLUSH MOUNTING SURFACE. HORIZONTAL JAMBS DO NOT TRANSFER LOAD.

VERTICAL JAMB ATTACHMENT (C-90 BLOCK OR 2,000 PSI MIN. CONCRETE COLUMN): 3/8"x4" SLEEVE ANCHOR BOLTS ON 18-1/2" CENTERS (C-90 BLOCK) OR 24" CENTERS (2,000 PSI CONCRETE) OR 1/4"x4" TAPCON SCREWS ON 10-1/2" CENTERS (2,000 PSI CONCRETE). WASHERS INCLUDED WITH SLEEVE ANCHORS, 1" O.D. WASHERS REQUIRED WITH TAPCONS. ANCHORS MAY BE COUNTERSUNK (BUT NOT REQUIRED) TO PROVIDE FLUSH MOUNTING SURFACE. HORIZONTAL JAMBS DO NOT TRANSFER LOAD.

TABLE 1

| DOOR HEIGHT    | NUMBER OF SECTIONS* |
|----------------|---------------------|
| 6'0" TO 7'0"   | 4                   |
| 7'6" TO 8'9"   | 5                   |
| 9'0" TO 10'6"  | 6                   |
| 10'9" TO 12'3" | 7                   |
| 12'6" TO 14'0" | 8                   |
| 14'3" TO 15'9" | 9                   |
| 16'0"          | 10                  |

\* SECTION ARE EITHER 18" OR 21" HIGH

THIS DOOR MEETS THE REQUIREMENTS OF THE LARGE MISSILE IMPACT AND CYCLIC TESTING.

THIS DOOR MEETS OR EXCEEDS THE DESIGN LOADS FOR THE WIND SPEEDS LISTED BELOW ACCORDING TO THE FLORIDA BLDG. CODE OR IBC (ASCE7) FOR THE FOLLOWING CONDITIONS: 1) ENCLOSED BUILDING, 2) DOOR HAS 2' OF WIDTH IN BUILDING'S END ZONE, 3) IMPORTANCE FACTOR OF 1.0, 4) ANY ROOF SLOPE, AND 5) 50% SAFETY FACTOR.

| WIND SPEED (MPH) | ≤ 140  | 150 | 150 |
|------------------|--------|-----|-----|
| EXPOSURE LEVEL   | B or C | B   | C   |
| MEAN ROOF HEIGHT | 30'    | 30' | 25' |

DESIGN LOADS: +48.0 PSF & -60.0 PSF. TEST LOADS: +72.0 PSF & -90.0 PSF.

MARK W. WESTERFIELD, P.E.  
FLORIDA #48495, NC P.E. #23832, TEXAS P.E. #91513

**Clopay**  
Building Products Company

CLOPAY BUILDING PRODUCTS COMPANY  
8585 DUKE BLVD.  
MASON, OH 45040  
(513) 770 - 4800

|                                               |                                                    |                                      |
|-----------------------------------------------|----------------------------------------------------|--------------------------------------|
| MANUFACTURING PRODUCT CODE<br>MPC: DSIE-1F171 | CLOPAY WINDLOAD RATING<br>W8                       | MAXIMUM DOOR SIZE*<br>9'0"W x 16'0"H |
| DATE:<br>11/19/96                             | DESCRIPTION<br>HDG/HDGL,<br>4300/01, 4310, 4400/01 |                                      |
| DRAWN BY:<br>MWW                              | DRAWING NUMBER:<br>B                               | VER:<br>IBC                          |
| CHECKED BY:                                   | 101703                                             |                                      |