

MODELS	24 GA	25 GA
CLOPAY	84A, 94, 98	73, 75
IDEAL	4F, 4RST	6RST
HOLMES	48, 48B	42, 42B
	SHORT PANEL	

ONE INTERMEDIATE STILE BETWEEN EACH EMBOSS LOCATION. ATTACHED W/ TOG-L-LOC (TOP & BOT) AND URETHANE ADHESIVE (ALONG CENTER). SEE TABLE 2 FOR DETAILS.

SPECIAL FASTENER REQUIREMENTS FOR DOORS WITH OPTIONAL IMPACT RESISTANT LITES FOR THESE (2) LOCATIONS FOR CENTER STRAP ON EACH SECTION. SEE SIDE VIEW A-A FOR DETAILS.

ONE ROW OF IMPACT-RESISTANT GLAZING IN EITHER TOP SECTION (SHOWN) OR NEXT-TO-THE-TOP SECTION (NOT SHOWN). MAX. GLAZING SIZE IS 18'-1/2" x 11". GLAZING IS INJECTION MOLDED GE LEXAN SLX2432T, AN APPROVED CC2 PLASTIC IN ACCORDANCE WITH IBC/FBC 2606. SEE SECTION B-B FOR ASSEMBLY DETAILS.

16 GA. PAINTED END STILES ATTACHED TO DOOR SKIN WITH PATENTED TOG-L-LOC SYSTEM (TOP, BOTTOM & CENTER).  
18 GA. GALV. DOUBLE END STILES ATTACHED TO TOP AND BOTTOM RAIL WITH PATENTED TOG-L-LOC SYSTEM.

SNAP LATCH ENGAGES ONTO VERTICAL TRACK. ONE SNAP LATCH ON EACH SIDE OF DOOR.

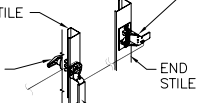
LOCK POSITION (BOTH SIDES) TWO POINT LOCKING HAS BEEN TESTED PER REQUIREMENTS OF SECTION 12.1 OF TAS 202. LOCKS HAVE 5/8" MIN. ENGAGEMENT. DOOR TESTED FOR FORCED ENTRY WITH BOTH OUTSIDE KEYED LOCK AND INSIDE SLIDE BOLT LOCK OPTIONS (SEE LAYOUT OF EACH LOCK FOR DETAILS).

(2) LHR TOP BRACKETS USED AS INNER BOTTOM BRACKET. EXT. HT. MODELS USE (1) 3-IN ROLLER CARRIER (P/N 0120394)

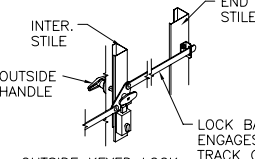
TABLE 1

DOOR HEIGHT	NUMBER OF SECTIONS*
6'0" TO 7'0"	4
7'6" TO 8'9"	5
9'0" TO 10'6"	6
10'9" TO 12'3"	7
12'6" TO 14'0"	8
14'3" TO 15'9"	9
16'0"	10

\* SECTION ARE EITHER 18" OR 21" HIGH



OUTSIDE KEYED LOCK SNAP LATCH LOCK OPTION



OUTSIDE KEYED LOCK LOCK BAR LOCKING

TABLE 2

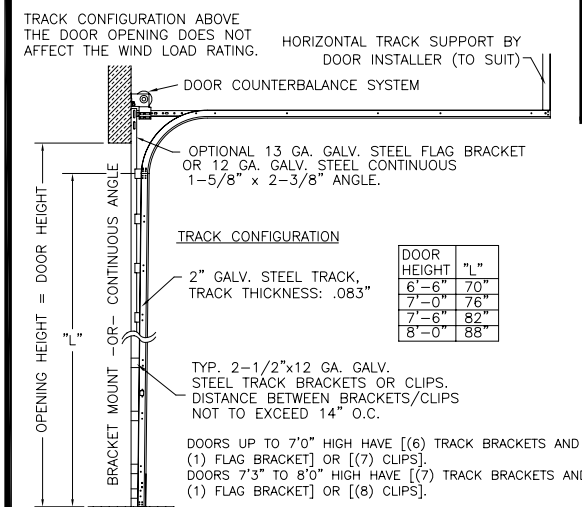
SECTION WIDTH	# INTER. STILES (PER SECTION)	# INTER. HINGES (PER JOINT)	# STRAPS (PER C-CHNL)
9'2" - 9'10"	3	3	5
10'0" - 11'10"	4	4	6
12'0" - 13'10"	5	5	7
14'0" - 15'10"	6	6	8
16'0" - 16'2"	7	7	9

THIS DOOR MEETS THE REQUIREMENTS OF THE LARGE MISSILE IMPACT AND CYCLIC TESTING.

THIS DOOR MEETS OR EXCEEDS THE DESIGN LOADS FOR THE WIND SPEEDS LISTED BELOW ACCORDING TO THE FLORIDA BLDG. CODE OR IBC (ASCE7) FOR THE FOLLOWING CONDITIONS: 1) ENCLOSED BUILDING, 2) DOOR HAS 2' OF WIDTH IN BUILDING'S END ZONE, 3) USE FACTOR OF 1.0, 4) ANY ROOF SLOPE, AND 5) 50% SAFETY FACTOR.

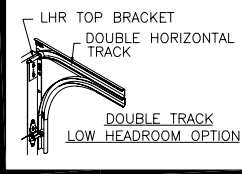
WIND SPEED (MPH)	≤ 140	150	150
EXPOSURE LEVEL	B or C	B	C
MEAN ROOF HEIGHT	30'	30'	18'

TRACK CONFIGURATION: DOORS UP TO 8'0" HIGH

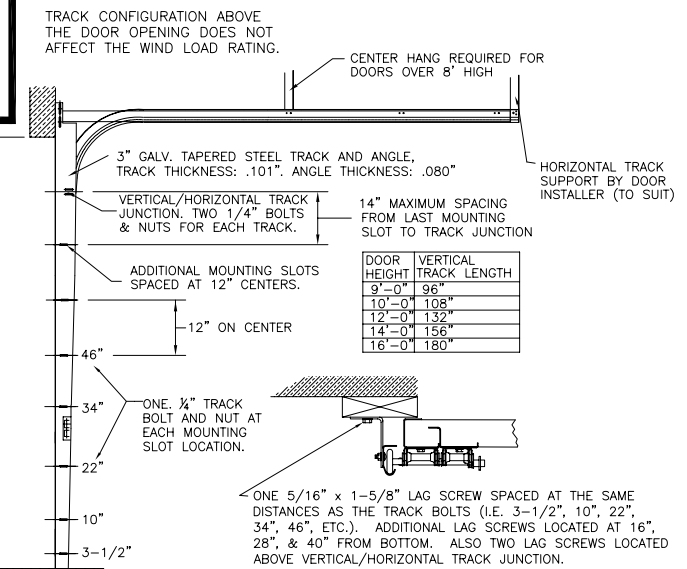


DOOR HEIGHT	"L"
6'-6"	70"
7'-0"	76"
7'-6"	82"
8'-0"	88"

DOORS UP TO 7'0" HIGH HAVE [(6) TRACK BRACKETS AND (1) FLAG BRACKET] OR [(7) CLIPS].  
DOORS 7'3" TO 8'0" HIGH HAVE [(7) TRACK BRACKETS AND (1) FLAG BRACKET] OR [(8) CLIPS].



TRACK CONFIGURATION: DOORS UP TO 16'0" HIGH



DOOR HEIGHT	VERTICAL TRACK LENGTH
9'-0"	96"
10'-0"	108"
12'-0"	132"
14'-0"	156"
16'-0"	180"

ONE 5/16" x 1-5/8" LAG SCREW SPACED AT THE SAME DISTANCES AS THE TRACK BOLTS (IE. 3'-1/2", 10", 22", 34", 46", ETC.). ADDITIONAL LAG SCREWS LOCATED AT 16", 28", & 40" FROM BOTTOM. ALSO TWO LAG SCREWS LOCATED ABOVE VERTICAL/HORIZONTAL TRACK JUNCTION.

DESIGN ENGINEER: MARK W. WESTERFIELD, P.E. FL P.E. # 48495, NC P.E. #23832, TX P.E. #91513

DESIGN LOADS: +42.0 P.S.F. & -48.0 P.S.F.  
TEST LOADS: +63.0 P.S.F. & -72.0 P.S.F.

2x6 JAMB TO SUPPORTING STRUCTURE ATTACHMENT (NOT TO BE USED FOR ATTACHMENT OF TRACK TO 2x6 VERTICAL JAMBS)

BUILDING TYPE	FASTENER TYPE	MIN. No. OF FASTENERS PER VERTICAL JAMB	MAXIMUM ON CENTER DISTANCE BETWEEN FASTENERS	1" O.D. WASHERS REQUIRED?
WOOD FRAME	1/2" x 3" EMBED LAG SCREW (ASTM A307, GRADE A)	6	16"	YES
2,000 PSI MIN. CONCRETE	1/4" x 1-3/4" MIN. EMBED TAPCON CONCRETE ANCHOR	10	8-1/4"	YES
C-90 BLOCK	3/8" x 1-3/4" MIN. EMBED RAWL LOK/BOLT ANCHOR BOLT (5000 SERIES)	8	12"	INCLUDED
2,000 PSI MIN. CONCRETE	3/8" x 1-3/4" MIN. EMBED RAWL LOK/BOLT ANCHOR BOLT (5000 SERIES)	7	14"	INCLUDED

2x6 JAMB TO SUPPORTING STRUCTURE ATTACHMENT

- NOTES:  
1) ALL THE LOAD FROM THE DOOR IS TRANSFERRED TO THE TRACK AND THEN FROM THE TRACK TO THE 2x6 VERTICAL JAMBS (GRADE 2 OR BETTER YELLOW PINE). NO LOAD FROM THE DOOR IS TRANSFERRED TO THE HORIZONTAL (TOP) JAMB.  
2) EACH VERTICAL JAMB SEES A MAXIMUM DESIGN LOAD OF +336 LB & -384 LB. PER LINEAR FOOT OF JAMB.  
3) ALL JAMB FASTENERS MAY BE (BUT NOT REQUIRED) COUNTERSUNK TO PROVIDE A FLUSH MOUNTING SURFACE.

WOOD FRAME BUILDINGS

STUD WALLS OF DOOR OPENING SHALL BE FRAMED SOLID BY NOT LESS THAN (3) 2x6 PRESSURE TREATED GRADE #2 OR BETTER WOOD STUD OF A STRESS GRADE NOT LESS THAN 1200 PSI NOMINAL EXTREME FIBER STRESS IN BENDING (F<sub>b</sub>). STUD WALLS TO BE CONTINUOUS FROM FOOTING TO TIE BEAMS.

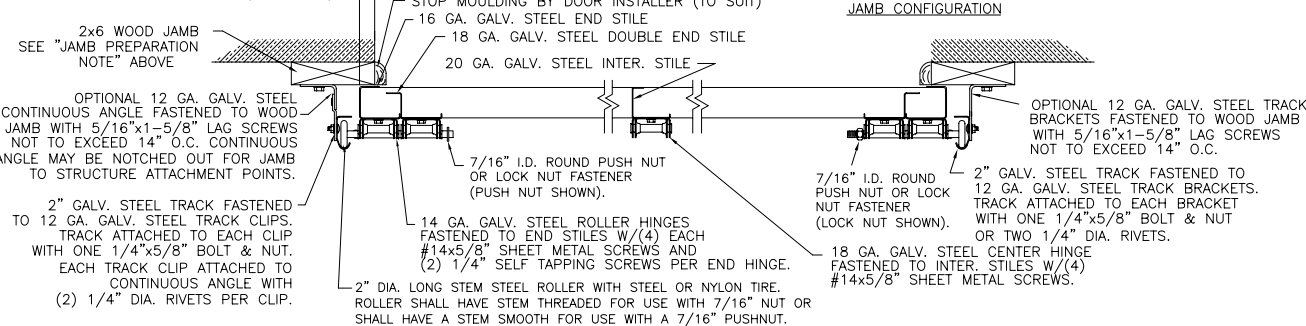
BLOCK WALL OR CONCRETE

2x6 WOOD JAMB SHALL BE ANCHORED TO GROUT REINFORCED BLOCK WALL OR CONCRETE COLUMN. BLOCK WALL CELLS SHALL BE FILLED WITH CONCRETE AND REINFORCED WITH #5 BAR EXTENDING INTO THE FOOTING AND INTO TIE BEAMS. ALL BARS SHALL BE CONTINUOUS FROM THE TIE BEAMS TO FOOTING PER BLOCK WALL OR CONCRETE COLUMN. BLOCK WALLS AND CONCRETE COLUMNS TO BE DESIGNED BY BUILDING PROFESSIONAL OF RECORD.

JAMB PREPARATION NOTE

EACH BRACKET MOUNT OR CONTINUOUS ANGLE TRACK SHALL BE FASTENED TO 2x6 YELLOW PINE WOOD JAMBS WITH 5/16"x1-5/8" LAG SCREWS (9 LAG SCREWS PER SIDE UP TO 7'0" HIGH AND 10 LAG SCREWS PER SIDE UP TO 8'0" HIGH). THE METHOD OF ATTACHMENT TO THE SUPPORTING STRUCTURE OF THE PRESSURE TREATED 2x6 WOOD JAMBS SHALL BE APPROVED BY THE PROFESSIONAL OF RECORD FOR THE STRUCTURE AND IN ACCORDANCE WITH CURRENT BUILDING CODES FOR THE LOADS LISTED ON THIS DRAWING. PREPARATION OF JAMBS BY OTHERS. CONTINUOUS ANGLE MAY BE PUNCHED OR NOTCHED OUT FOR ATTACHMENT OF 2x6 WOOD JAMBS TO SUPPORTING STRUCTURE. CONTINUOUS ANGLE MAY BE MOUNTED DIRECTLY TO CONCRETE USING APPROVED MASONRY FASTENERS. ALL MOUNTING OF TRACK, BRACKETS, ANGLES, HORIZONTAL TRACK SUPPORTS, AND ALL OTHER DOOR HARDWARE TO BE INSTALLED PER CLOPAY INSTALLATION INSTRUCTIONS SUPPLIED WITH DOOR SYSTEM UNLESS OTHERWISE NOTED.

1" DOOR OVERLAP (EACH SIDE)



JAMB CONFIGURATION

OPTIONAL 12 GA. GALV. STEEL TRACK BRACKETS FASTENED TO WOOD JAMB WITH 5/16"x1-5/8" LAG SCREWS NOT TO EXCEED 14" O.C.  
2" GALV. STEEL TRACK FASTENED TO 12 GA. GALV. STEEL TRACK BRACKETS. TRACK ATTACHED TO EACH BRACKET WITH ONE 1/4"x5/8" BOLT & NUT OR TWO 1/4" DIA. RIVETS.  
18 GA. GALV. STEEL CENTER HINGE FASTENED TO INTER. STILES W/(4) #14x5/8" SHEET METAL SCREWS.



CLOPAY BUILDING PRODUCTS COMPANY  
8585 DUKE BLVD.  
MASON, OH 45040  
(513) 770-4800

MANUFACTURING PRODUCT CODE: MPC: PAN-2F153	CLOPAY WINDLOAD RATING W7	MAX DOOR SIZE: 16'2"W x 16'0"H
DATE: 11/21/94	DESCRIPTION: 2-IN PAN +42/-48 16-2 X 16-0	VER: IBC
DRAWN BY: MWW	CHECKED BY:	DRAWING NUMBER: 101309

Clopay Corporation All Rights Reserved.