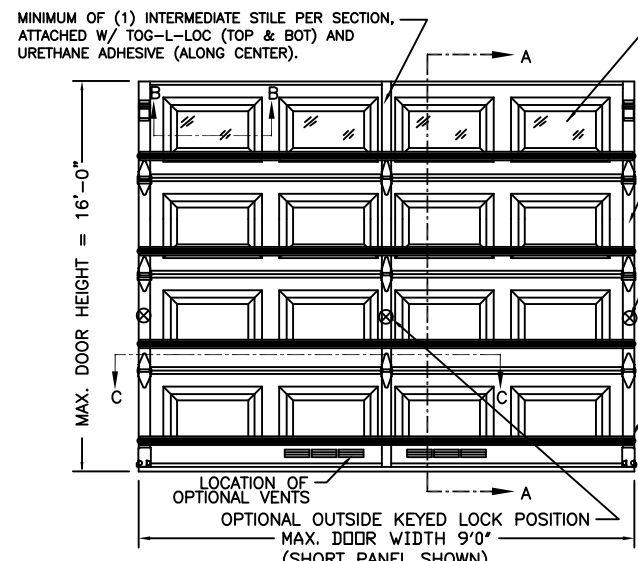
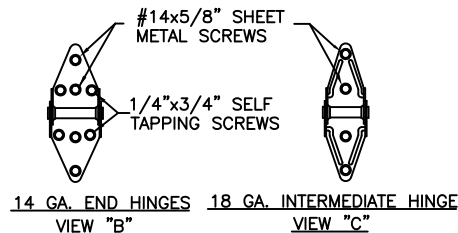
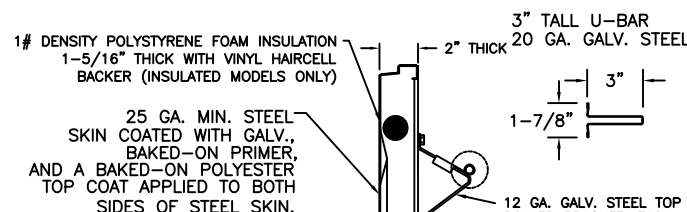


'CLASSIC' RAISED PANEL EMBOSS DOORS						
MODELS	24 GA	24 GA INS	25 GA	25 GA INS	25 GA	25 GA INS
CLOPAY	84A, 94	--	73, 75	1500, 190	76	76V
IDEAL	4RST, 4F*	4RSF	6RST	6RSF	2RST	--
HOLMES	48, 48B	--	42, 42B	55, 55S	--	--
	SHORT PANEL			LONG PANEL		

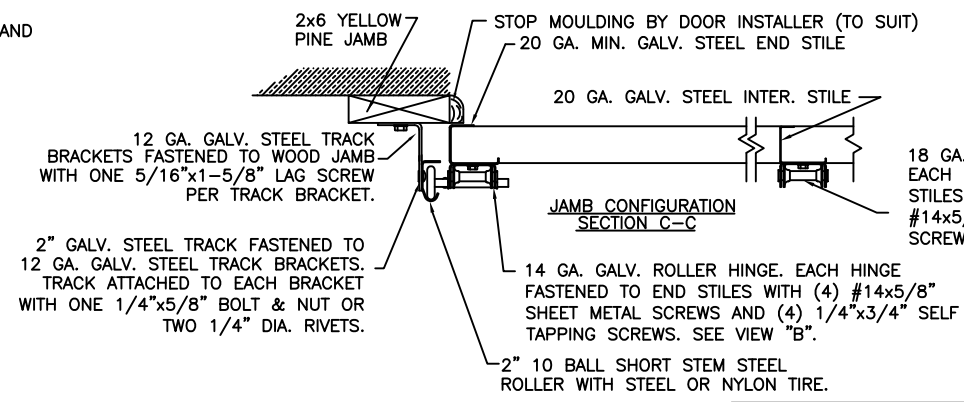
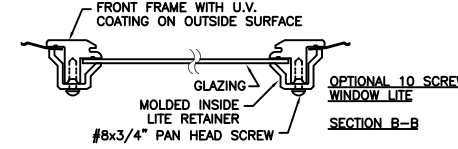
* - MODEL 4F IS FLUSH

DOOR HEIGHT	# OF SECTIONS
UP TO 7'0"	4
7'3" TO 8'9"	5
9'0" TO 10'6"	6
10'9" TO 12'3"	7
12'6" TO 14'0"	8
14'3" TO 15'9"	9
16'0"	10
MAX SECTION HEIGHT: 21'	

'CARRIAGE HOUSE' RAISED PANEL EMBOSS DOORS				
MODELS	25 GA	25 GA INS	25 GA	25 GA INS
CLOPAY 'GALLERY'	GD5S, GR5S	GD5SV, GR5SV	--	--
HOLMES 'ARTISTRY'	AR5S	AR5SV	--	--
IDEAL 'CARRIAGE HOUSE'	ED5S	ED5SV	--	--
	SHORT PANEL		LONG PANEL	



'CLASSIC' SHORT RAISED-PANEL SHOWN. LONG 'CLASSIC' AND SHORT 'CARRIAGE HOUSE' ARE ALSO APPROVED.

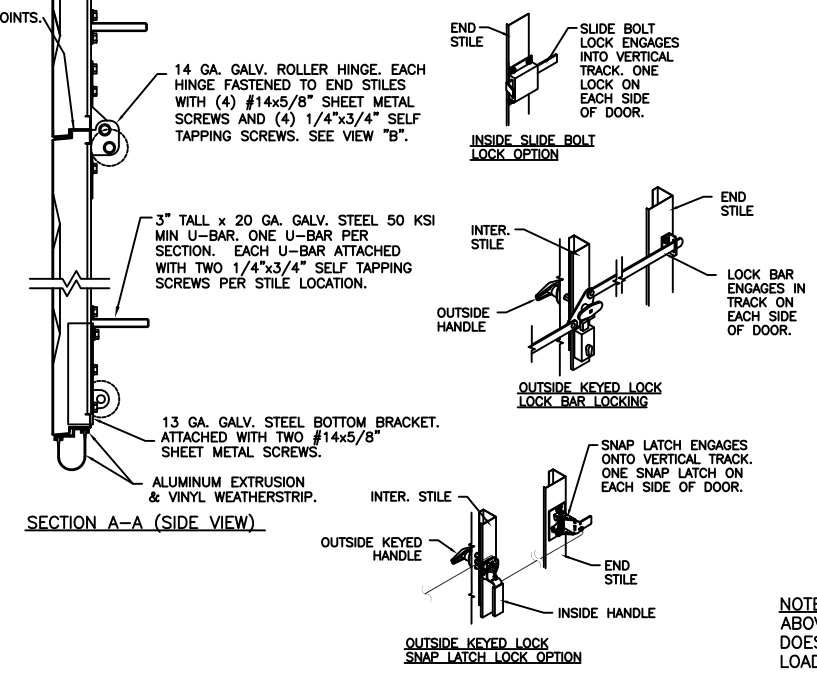


ORIGINAL DRAWINGS ARE SIGNED IN BLUE INK WITH A RAISED SEAL (EMBOSS).

NOTE: THE DESIGN OF THE SUPPORTING STRUCTURAL ELEMENTS SHALL BE THE RESPONSIBILITY OF THE PROFESSIONAL OF RECORD FOR THE BUILDING OR STRUCTURE AND IN ACCORDANCE WITH CURRENT BUILDING CODES FOR THE LOADS LISTED ON THE DRAWING.

DESIGN ENGINEER: MARK WESTERFIELD, P.E.
FLORIDA P.E. #48495,
NC P.E. #23832,
TEXAS P.E. #91513

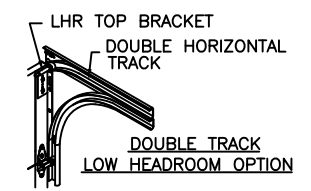
REV	DATE	DESCRIPTION
07	08/03/04	ADDED INSULATED M/N 190, 1500
08	05/19/05	UPDATED CODE REF.
09	09/26/05	ADDED ROLLER OPTION
10	11/30/07	ADDED 76V, EXTENDED HEIGHTS, COMBINED CLOPAY, HOLMES, AND IDEAL M/N
11	08/08/08	ADDED M/N 42B, 48B, 55S
12	10/21/08	ADDED M/N 4F
13	12/2009	ADDED 'CARRIAGE HOUSE' EMBOSS DOORS.
14	08/2010	REVISED MODEL TABLES.



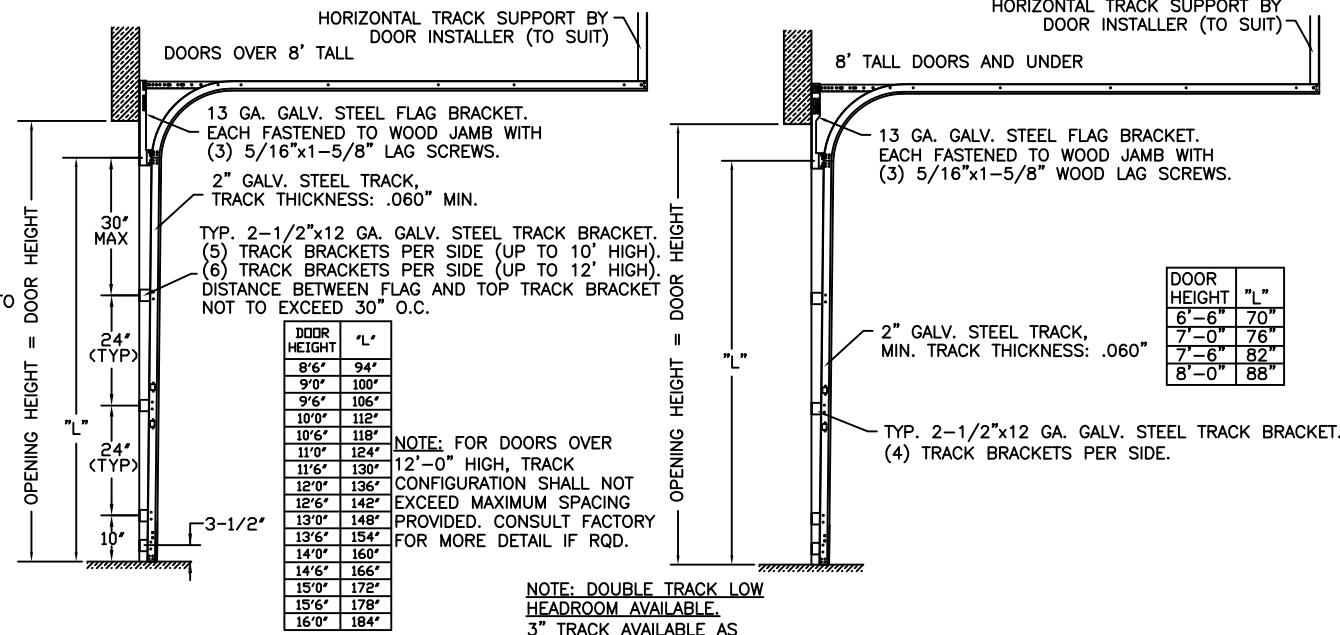
THE OPTIONAL GLAZING SHOWN ON THIS DRAWING MEETS THE WIND LOAD REQUIREMENTS OF THE FLORIDA BUILDING CODE OR INTERNATIONAL BUILDING CODE BUT DOES NOT MEET THE IMPACT RESISTANT REQUIREMENT FOR WINDBORNE DEBRIS REGIONS (REF. CHAPTER 16 FBC/IBC)

THIS DOOR MEETS OR EXCEEDS THE DESIGN LOADS FOR THE WIND SPEEDS LISTED BELOW ACCORDING TO THE FLORIDA BLDG. CODE OR IBC (ASCE7) FOR THE FOLLOWING CONDITIONS: 1) ENCLOSED BUILDING, 2) DOOR HAS 2' OF WIDTH IN BUILDING'S END ZONE, 3) IMPORTANCE FACTOR OF 1.0, 4) ANY ROOF SLOPE, AND 5) 50% SAFETY FACTOR.

WIND SPEED (MPH)	≤ 100	110	110	120
EXPOSURE LEVEL	B or C	B	C	B
MEAN ROOF HEIGHT	30'	30'	20'	30'



NOTE: TRACK CONFIGURATION ABOVE THE DOOR OPENING DOES NOT AFFECT THE WIND LOAD RATING OF THIS DOOR.



DESIGN LOADS: +25.0 P.S.F. & -32.0 P.S.F.
TEST LOADS: +37.5 P.S.F. & -48.0 P.S.F.

PREPARATION OF JAMBS BY OTHERS.

VERTICAL JAMB ATTACHMENT (WOOD FRAME BUILDINGS):
3/8"x3" LAG SCREWS ON 24" CENTERS. 1-1/8" O.D. WASHER REQUIRED. LAG SCREWS MAY BE COUNTERSUNK (BUT NOT REQUIRED) TO PROVIDE A FLUSH MOUNTING SURFACE. HORIZONTAL JAMBS DO NOT TRANSFER LOAD.

VERTICAL JAMB ATTACHMENT (C-90 BLOCK OR 2,000 PSI MIN. CONCRETE COLUMN):
3/8"x3" SLEEVE ANCHOR BOLTS ON 24" CENTERS (2,000 PSI MIN. CONCRETE). WASHERS INCLUDED WITH SLEEVE ANCHORS.

OR
1/4"x3" TAPCON SCREWS ON 24" CENTERS (2,000 PSI MIN. CONCRETE) OR 16" CENTERS (C-90 BLOCK), 1" O.D. WASHERS REQUIRED WITH TAPCONS. ANCHORS MAY BE COUNTERSUNK (BUT NOT REQUIRED) TO PROVIDE A FLUSH MOUNTING SURFACE. HORIZONTAL JAMBS DO NOT TRANSFER LOAD.

OTHER JAMB CONFIGURATIONS: REFER TO DASMA TDS-161. A LICENSED DESIGN PROFESSIONAL MAY ALSO BE EMPLOYED TO APPROVE ALTERNATE FASTENERS AND/OR JAMB CONFIGURATIONS.

Clopay
Building Products
Company

8585 DUKE BLVD.
MASON, OH 45040
(513) 770-4800

Clopay Corporation All Rights Reserved.

MANUFACTURING PRODUCT CODE PAN-2F151	WINDLOAD RATING W4	MAX. DOOR SIZE: 9'W x 16'H
DATE: 9/23/96	DESCRIPTION: CLASSIC AND CH RP STEEL PAN SINGLE-CAR, 9'W +25/-32 PSF	
DRAWN BY: MWW	DRAWING NUMBER: 300159	VER: IBC
CHECKED BY:		