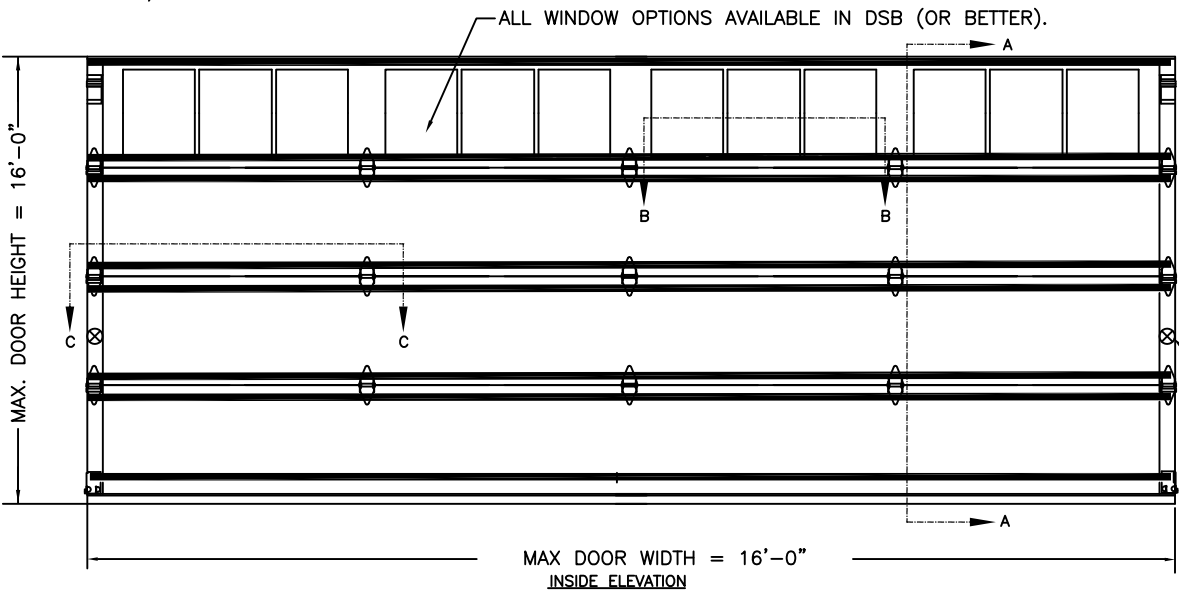


CLOPAY CANYON RIDGE SERIES: CAN1nn-XX
 HOLMES BROOKSTONE SERIES: BRK1nn-XX
 IDEAL BROOKSTONE SERIES: BRK1nn-XX
MODEL DESIGNATION NOTE 1: "nn" REPRESENTS THE ARRANGEMENT OF THE DECORATIVE OVERLAYS. THE FIRST DIGIT WILL HAVE A VALUE FROM 1 TO 3 AND THE SECOND DIGIT WILL HAVE A VALUE FROM 1 TO 8.

MODEL DESIGNATION NOTE 2: "xx" REPRESENTS THE TYPE OF CLADDING. IF "xx" IS "NM" OR "NC" THE DOOR HAS NO CLADDING (JUST OVERLAYS) AND IS 1-7/8" THICK OVERALL. ANY OTHER VALUE FOR "xx" INDICATES THAT THE DOOR HAS CLADDING AND OVERLAYS ON THE 1-3/8" BASE DOUBLE-SKIN INSULATED DOOR AND IS 2-3/8" THICK OVERALL.

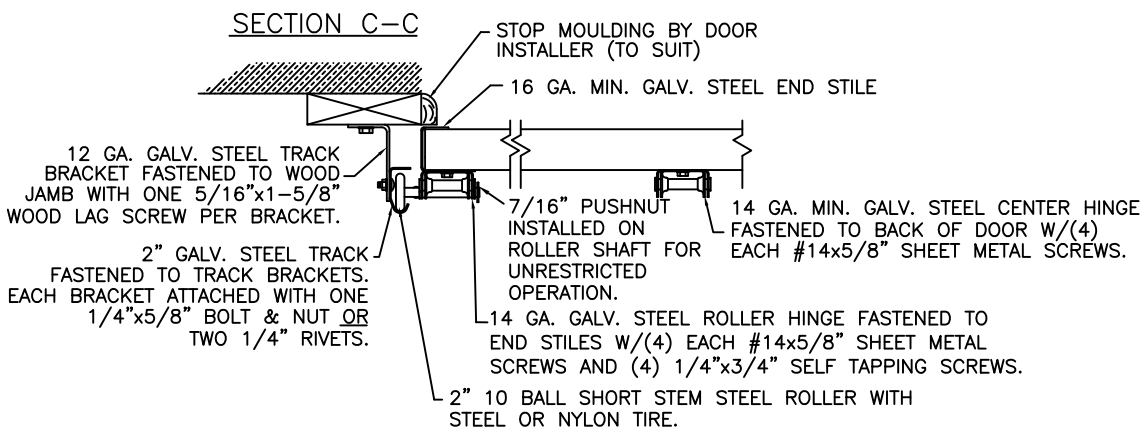
DOOR HEIGHT	# OF SECTIONS
UP TO 6'0"	3
6'3" TO 8'0"	4
8'3" TO 10'0"	5
10'3" TO 12'0"	6
12'3" TO 14'0"	7
14'3" TO 16'0"	8
MAX SECTION HEIGHT: 24"	

REVISIONS					
REV. NO.	ZONE:	DATE:	ECN NO.	APPVD:	DESCRIPTION
00	-	-	-	SH	INITIAL RELEASE
01	-	11/2009	-	SH	UPDATED MODEL DESCRIPTIONS.



VERTICAL JAMB ATTACHMENT (WOOD FRAME BUILDINGS):
 3/8" x 3" (1-1/2" MIN. EMBED) LAG SCREWS ON 19" CENTERS. LAG SCREWS MUST USE 1-1/8" O.D. WASHER. LAG SCREWS MAY BE (BUT NOT REQUIRED) COUNTERSUNK TO PROVIDE A FLUSH MOUNTING SURFACE. HORIZONTAL JAMBS DO NOT TRANSFER LOAD.

VERTICAL JAMB ATTACHMENT (CMU BLOCK OR 2,000 PSI MIN. CONCRETE COLUMN):
 3/8" x 3" (1-1/2" MIN. EMBED) SLEEVE ANCHORS ON 17" CENTERS (GROUT-FILLED CMU BLOCK OR 2,000 PSI MIN. CONCRETE) OR 1/4" x 3" (1-1/2" MIN. EMBED) TAPCONS ON 14" CENTERS (2,000 PSI MIN. CONCRETE). WASHERS INCLUDED WITH SLEEVE ANCHORS, 1" O.D. WASHERS REQUIRED WITH TAPCONS. ANCHORS MAY BE (BUT NOT REQUIRED) COUNTERSUNK TO PROVIDE A FLUSH MOUNTING SURFACE. HORIZONTAL JAMBS DO NOT TRANSFER LOAD.

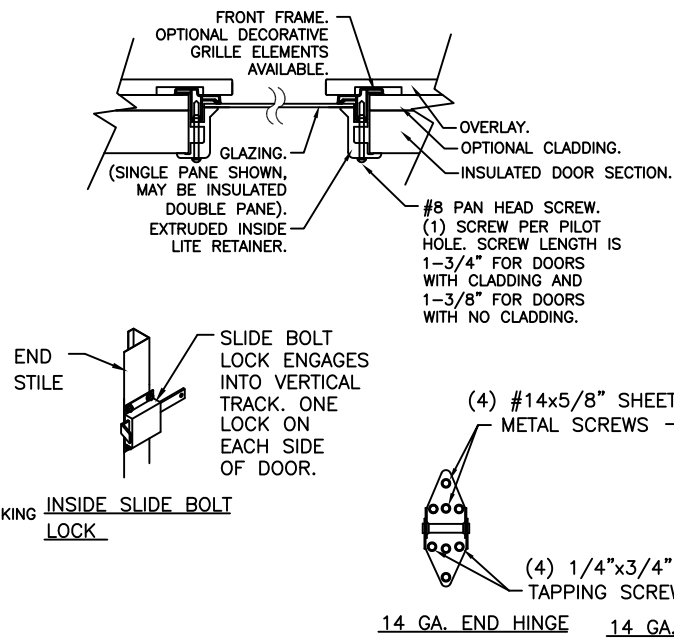


PREPARATION OF JAMBS BY OTHERS.

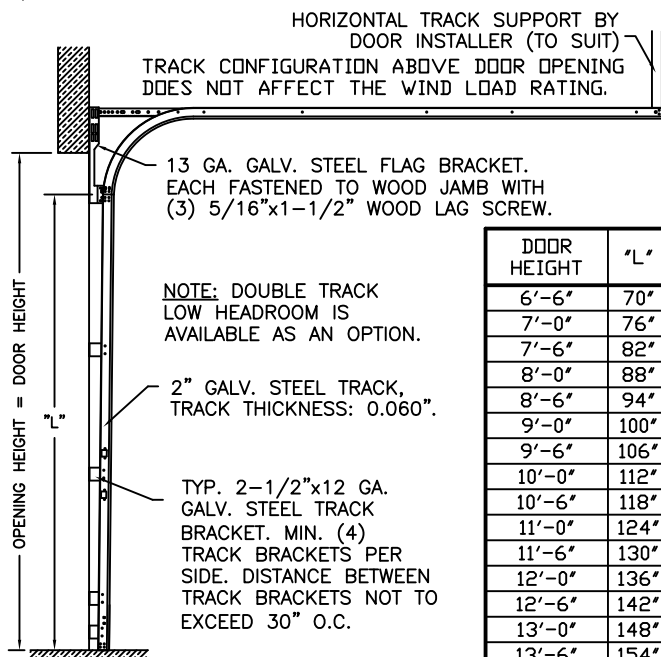
NOTE: THE DESIGN OF THE SUPPORTING STRUCTURAL ELEMENTS SHALL BE THE RESPONSIBILITY OF THE PROFESSIONAL OF RECORD FOR THE BUILDING OR STRUCTURE AND IN ACCORDANCE WITH CURRENT BUILDING CODES FOR THE LOADS LISTED ON THIS DRAWING.

DESIGN ENGINEER: MARK WESTERFIELD, P.E.
 FLORIDA P.E. #48495, NC P.E. #23832, TEXAS P.E. #91513

SECTION B-B



TRACK CONFIGURATION



NOTE: DOUBLE TRACK LOW HEADROOM IS AVAILABLE AS AN OPTION.

TYP. 2-1/2"x12 GA. GALV. STEEL TRACK BRACKET. MIN. (4) TRACK BRACKETS PER SIDE. DISTANCE BETWEEN TRACK BRACKETS NOT TO EXCEED 30" O.C.

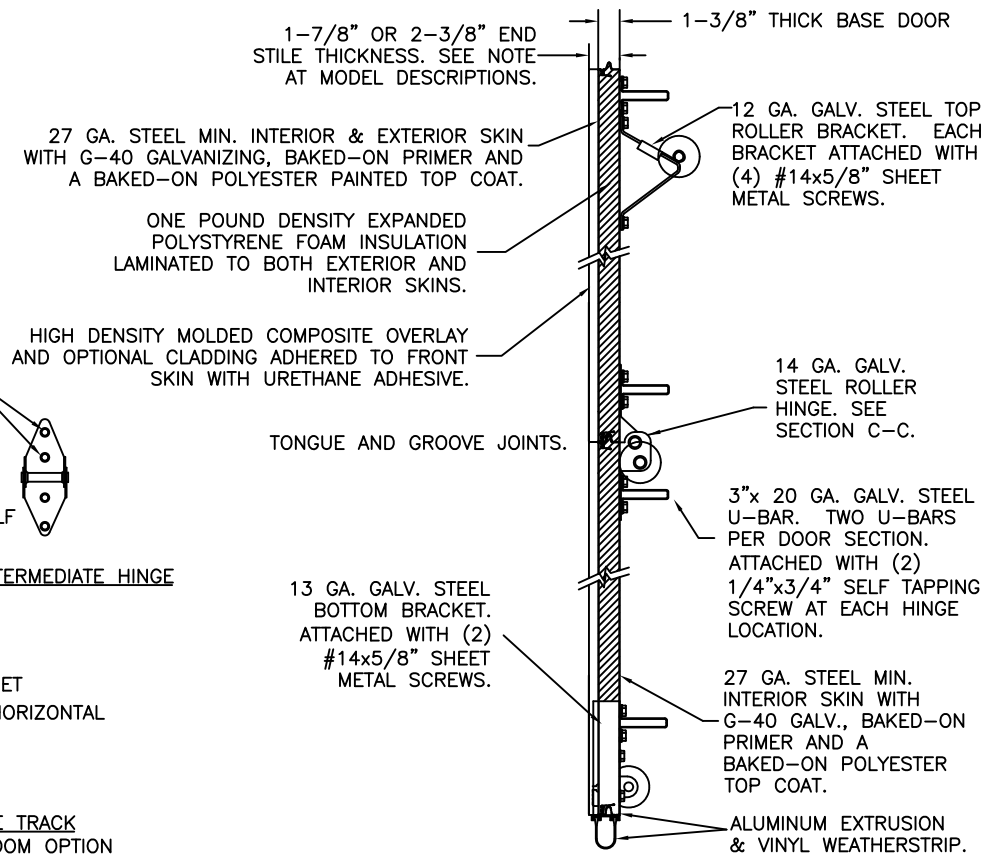
DESIGN LOADS: +25.0 P.S.F. & -25.0 P.S.F.
 TEST LOADS: +37.5 P.S.F. & -37.5 P.S.F.

ORIGINAL DRAWINGS ARE SIGNED IN BLUE INK WITH A RAISED SEAL (EMBOSS).

Unless Stated Otherwise TOLERANCES are
 .0 = ±.031
 .00 = ±.015
 .000 = ±.005
 .0000 = ±.001
 Degrees = ±1/2"

Unless Stated Otherwise DIMENSIONS ARE IN INCHES.

SECTION A-A



THE OPTIONAL GLAZING SHOWN ON THIS DRAWING MEETS THE WIND LOAD REQUIREMENTS OF THE FLORIDA BUILDING CODE OR INTERNATIONAL BUILDING CODE BUT DOES NOT MEET THE IMPACT RESISTANT REQUIREMENT FOR WINDBORNE DEBRIS REGIONS (REF. CHAPTER 16 FBC/IBC).

THIS DOOR MEETS OR EXCEEDS THE DESIGN LOADS FOR THE WIND SPEEDS LISTED BELOW ACCORDING TO THE FLORIDA BLDG. CODE OR IBC (ASCE7) FOR THE FOLLOWING CONDITIONS: 1) ENCLOSED BUILDING, 2) DOOR HAS 2' OF WIDTH IN BUILDING'S END ZONE, 3) IMPORTANCE FACTOR OF 1.0, 4) ANY ROOF SLOPE, AND 5) 50% SAFETY FACTOR.

WIND SPEED (MPH)	≤ 100	110	110	120
EXPOSURE LEVEL	B or C	B	C	B
MEAN ROOF HEIGHT	30'	30'	15'	30'

MANUFACTURING PRODUCT CODE:
 MPC: DSIEO-1E479

Clopay
 Building Products Company
 8585 Duke Boulevard
 Mason, OH 45040 USA
 Tel. No. 513-770-4800
 Fax No. 513-770-4853

CLOPAY WINDLOAD RATING
 W4

DESCRIPTION: CANYON RIDGE ±25 PSF DBL CAR

DRAWN BY: SH	DATE: 6/2009	SCALE: N/A	DWG. SIZE B
CHECKED BY: SH	DATE: 6/2009	SHEET 1 OF 1	
DWG. NO.: 104262	VER: IBC		