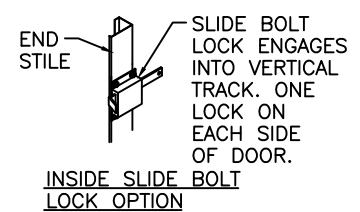
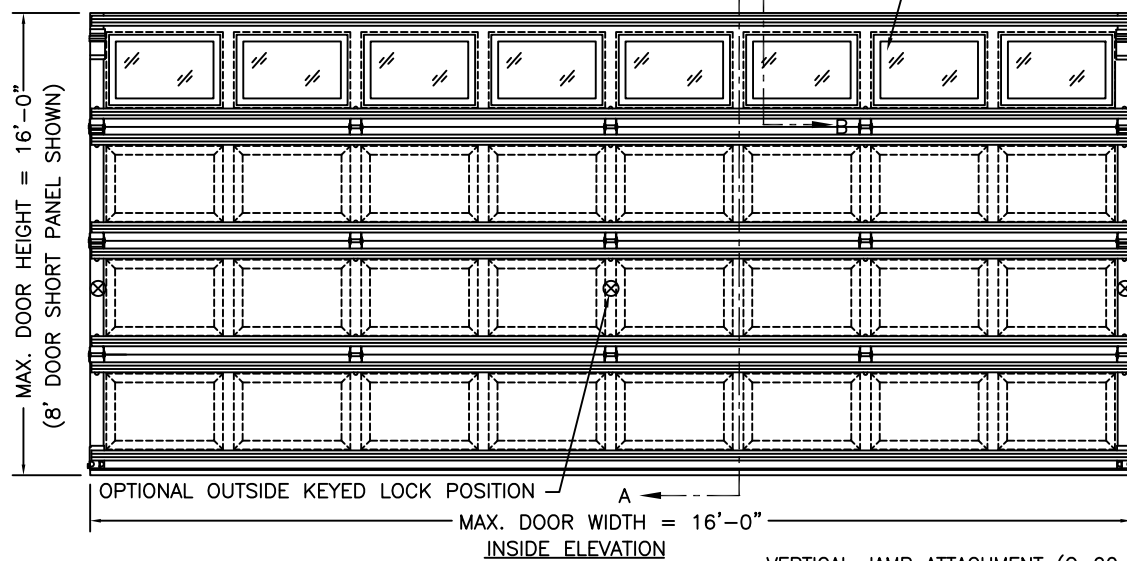
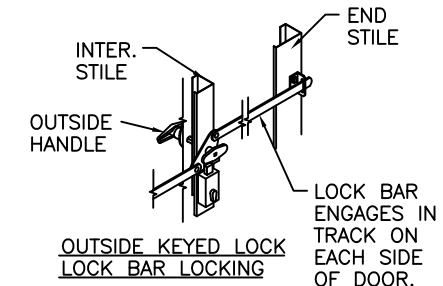


MODELS	1 3/8" THICK STYRENE	
CLOPAY/GALLERY	GD1SP, GR1SP	GD1LP, GR1LP
HOLMES/ARTISTRY	AR1SP	AR1LP
IDEAL/EXPRESSIONS	ED1SP	ED1LP
	SHORT PANEL	LONG PANEL

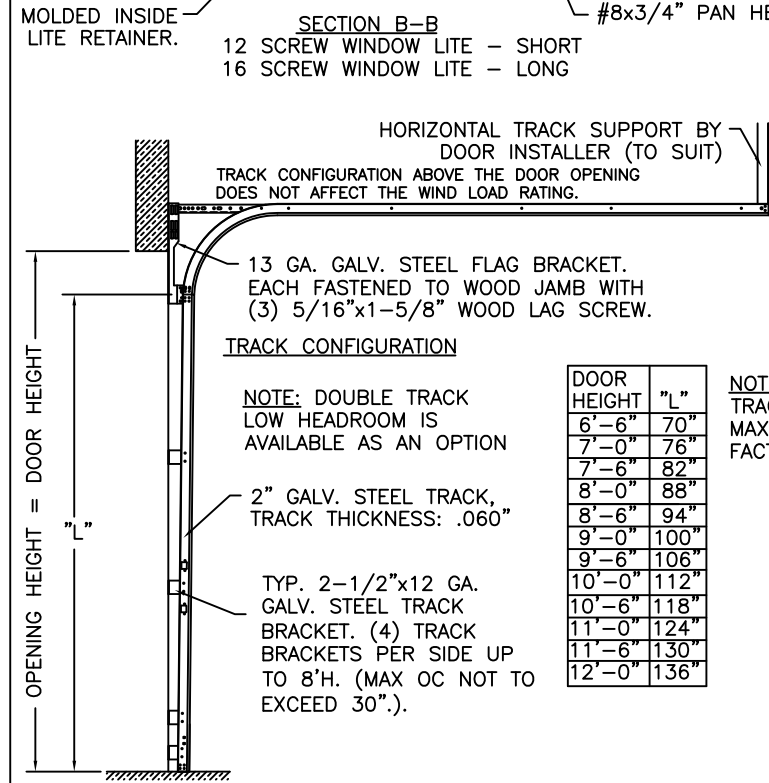
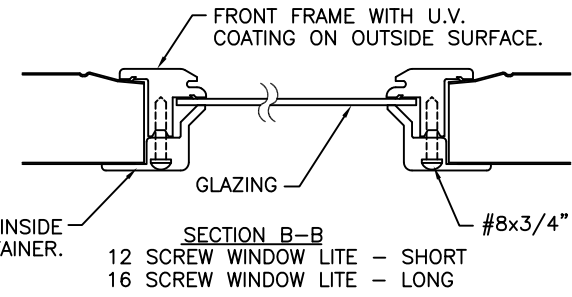
REV	DATE	DESCRIPTION
00	10/15/2007	INITIAL RELEASE

OPTIONAL 1/8" ACRYLIC OR SSB GLASS LITES AVAILABLE. OPTIONAL ACRYLIC GLAZING IS PLASKOLITE OPTIX OR LUCITE CP APPROVED CC2 PLASTIC IN ACCORDANCE WITH IBC/FBC 2606 (SEE SECTION B-B) SHORT WINDOW LITE SHOWN, LONG ALSO AVAIL (LONG WINDOW LITE FRAME NOT TO EXCEED 42" WIDE X 16' TALL)



VERTICAL JAMB ATTACHMENT (WOOD FRAME BUILDINGS): 1/2"x3" LAG SCREWS ON 22.5" CENTERS. 1" O.D. MIN. WASHER REQUIRED. LAG SCREWS MAY BE COUNTERSUNK (BUT NOT REQUIRED) TO PROVIDE A FLUSH MOUNTING SURFACE. HORIZONTAL JAMBS DO NOT TRANSFER LOAD.

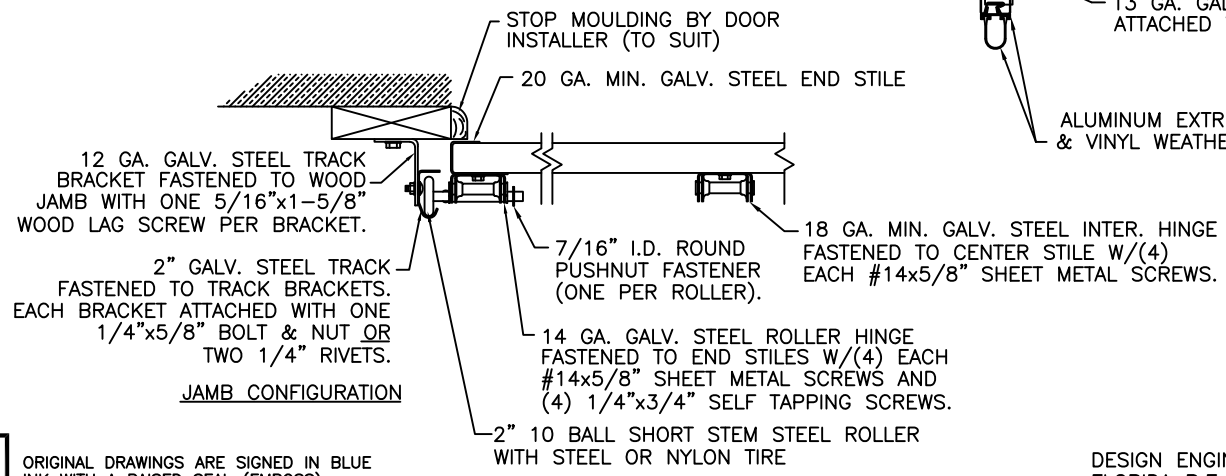
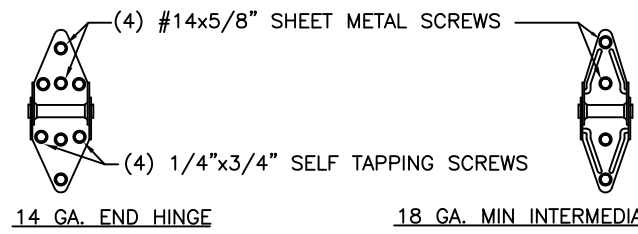
VERTICAL JAMB ATTACHMENT (C-90 BLOCK OR 2,000 PSI MIN. CONCRETE COLUMN): 3/8"x4" SLEEVE ANCHORS ON 24" CENTERS (BOTH C-90 BLOCK OR 2,000 PSI MIN. CONCRETE) OR 1/4"x4" TAPCON SCREWS ON 21" CENTERS (2,000 PSI MIN. CONCRETE). WASHERS INCLUDED WITH SLEEVE ANCHORS, 1" O.D. MIN. WASHERS REQUIRED WITH TAPCONS. ANCHORS MAY BE COUNTERSUNK (BUT NOT REQUIRED) TO PROVIDE A FLUSH MOUNTING SURFACE. HORIZONTAL JAMBS DO NOT TRANSFER LOAD.



NOTE: FOR DOORS OVER 12'-0" HIGH, TRACK CONFIGURATION SHALL NOT EXCEED MAXIMUM SPACING PROVIDED. CONSULT FACTORY FOR MORE DETAIL IF RQD.

THIS DOOR MEETS OR EXCEEDS THE DESIGN LOADS FOR THE WIND SPEEDS LISTED BELOW ACCORDING TO THE FLORIDA BLDG. CODE OR IBC (ASCE7) FOR THE FOLLOWING CONDITIONS: 1) ENCLOSED BUILDING, 2) DOOR HAS 2' OF WIDTH IN BUILDING'S END ZONE, 3) IMPORTANCE FACTOR OF 1.0, 4) ANY ROOF SLOPE, AND 5) 50% SAFETY FACTOR.

WIND SPEED (MPH)	≤ 90	100	100	110
EXPOSURE LEVEL	B OR C	B	C	B
MEAN ROOF HEIGHT	30'	30'	17'	30'



1 POUND DENSITY EXPANDED POLYSTYRENE FOAM INSULATION LAMINATED TO BOTH EXTERIOR AND INTERIOR SKINS.

27 GA. STEEL MIN. EXTERIOR GALV. SKIN WITH A BAKED-ON PRIMER AND POLYESTER PAINTED TOP COAT.

TONGUE AND GROOVE JOINTS.

THE OPTIONAL GLAZING SHOWN ON THIS DRAWING MEETS THE WIND LOAD REQUIREMENTS OF THE FLORIDA BUILDING CODE OR INTERNATIONAL BUILDING CODE BUT DOES NOT MEET THE IMPACT RESISTANT REQUIREMENT FOR WINDBORNE DEBRIS REGIONS (REF. CHAPTER 16 FBC/IBC)

3" TALL x 20 GA. GALV. STEEL U-BAR. TWO U-BARS ON EACH SECTION, EACH U-BAR ATTACHED WITH TWO 1/4"x3/4" SELF TAPPING SCREWS PER HINGE LOCATION. MIN. U-BAR YIELD STRENGTH: 50 KSI.

27 GA. STEEL MIN. GALV. INTERIOR GALV. SKIN WITH A BAKED-ON PRIMER AND A BAKED-ON POLYESTER PAINTED TOP COAT.

13 GA. GALV. STEEL BOTTOM BRACKET. ATTACHED WITH (2) #14x5/8" SHEET METAL SCREWS.

ALUMINUM EXTRUSION & VINYL WEATHERSTRIP.

NOTE: THE DESIGN OF THE SUPPORTING STRUCTURAL ELEMENTS SHALL BE THE RESPONSIBILITY OF THE PROFESSIONAL OF RECORD FOR THE BUILDING OR STRUCTURE AND IN ACCORDANCE WITH CURRENT BUILDING CODES FOR THE LOADS LISTED ON THIS DRAWING.

DESIGN LOADS: +20.0 PSF & -21.0 PSF
TEST LOADS: +30.0 PSF & -31.0 PSF

DESIGN ENGINEER: MARK WESTERFIELD, P.E.
FLORIDA P.E. #48495, NC P.E. #23832, TEXAS P.E. #91513

ORIGINAL DRAWINGS ARE SIGNED IN BLUE INK WITH A RAISED SEAL (EMBOSS)



CLOPAY BUILDING PRODUCTS COMPANY
8585 DUKE BLVD.
MASON, OH 45040
(513) 770-4800

Clopay Corporation All Rights Reserved.

MANUFACTURING PRODUCT CODE DSIE-1A471	WINDLOAD RATING W3	MAX. DOOR SIZE: 16'W x 16'H
DATE: 10/15/07	DESCRIPTION: GALLERY 1-3/8" EPS DC +20/-21 PSF	
DRAWN BY: NAS	DRAWING NUMBER: B 104028	VER: 00
CHECKED BY:		