

MODELS	2" THICK STYRENE	
CLOPAY/GALLERY	GD2SP, GR2SP	GD2LP, GR2LP
HOLMES/ARTISTRY	AR2SP	AR2LP
IDEAL/EXPRESSIONS	ED2SP	ED2LP
	SHORT PANEL	LONG PANEL

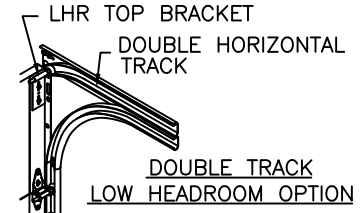
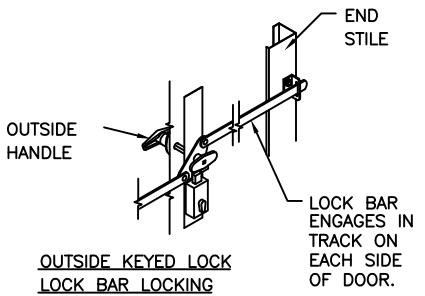
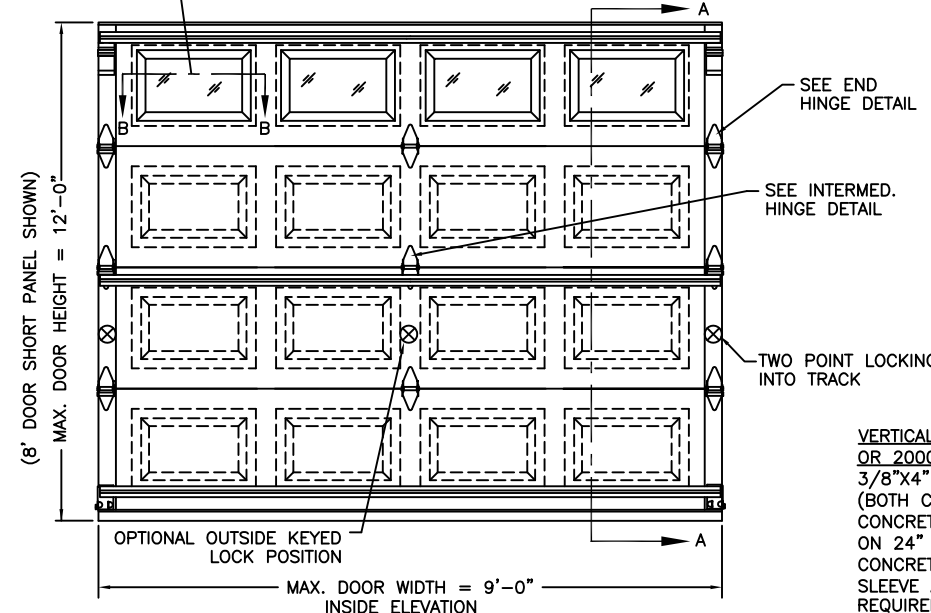
REV.	DATE	DESCRIPTION
00	10/15/07	INITIAL RELEASE

THE OPTIONAL GLAZING SHOWN ON THIS DRAWING MEETS THE WIND LOAD REQUIREMENTS OF THE FLORIDA BUILDING CODE OR INTERNATIONAL BUILDING CODE BUT DOES NOT MEET THE IMPACT RESISTANT REQUIREMENT FOR WINDBORNE DEBRIS REGIONS (REF. CHAPTER 16 FBC/IBC)

THIS DOOR MEETS OR EXCEEDS THE DESIGN LOADS FOR THE WIND SPEEDS LISTED BELOW ACCORDING TO THE FLORIDA BLDG. CODE OR IBC (ASCE7) FOR THE FOLLOWING CONDITIONS: 1) ENCLOSED BUILDING, 2) DOOR HAS 2' OF WIDTH IN BUILDING'S END ZONE, 3) IMPORTANCE FACTOR OF 1.0, 4) ANY ROOF SLOPE, AND 5) 50% SAFETY FACTOR.

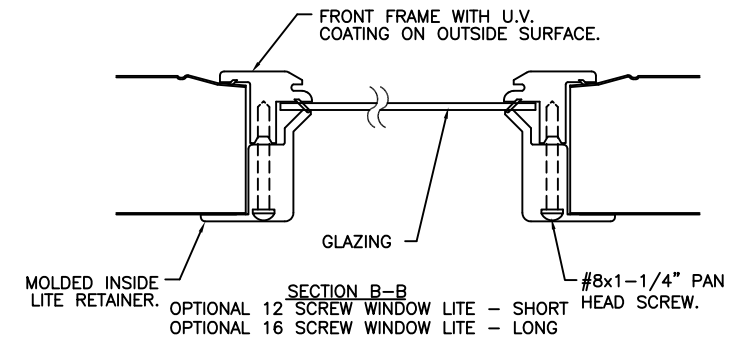
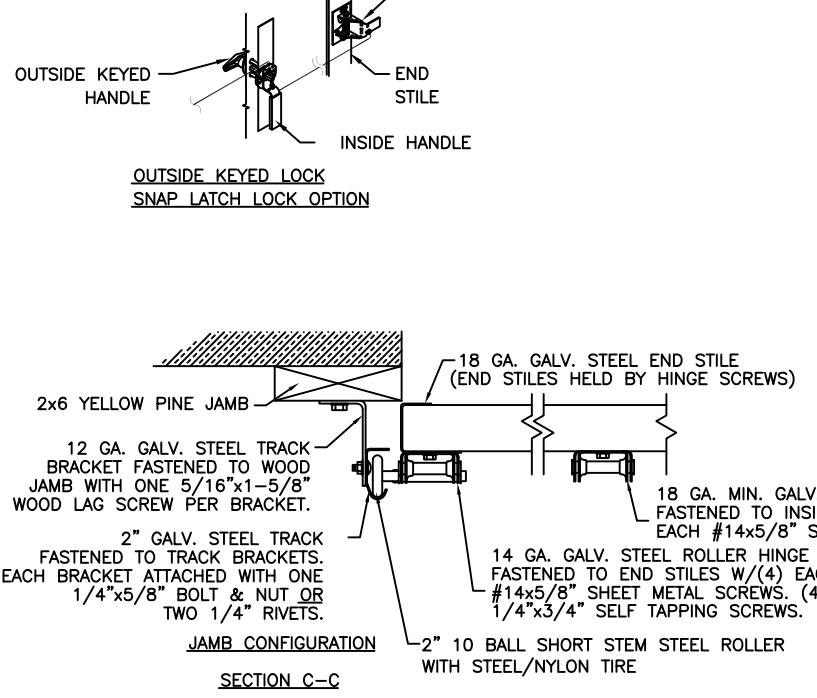
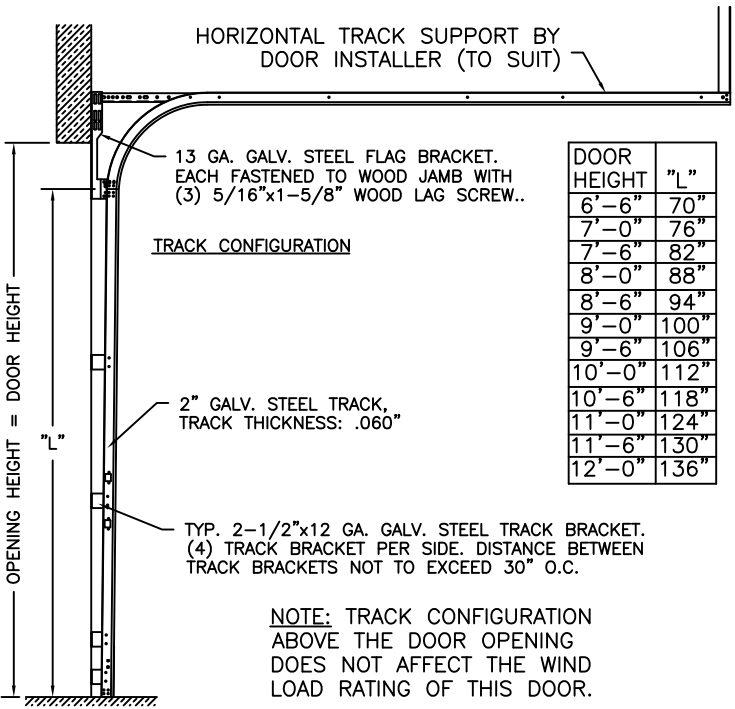
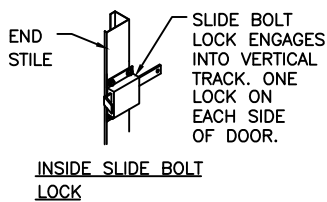
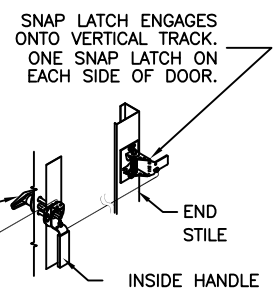
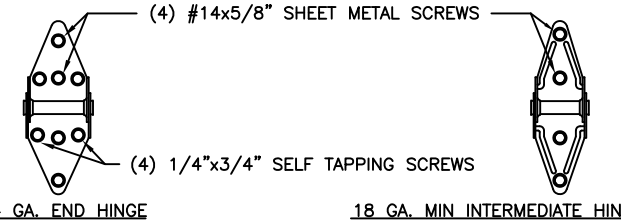
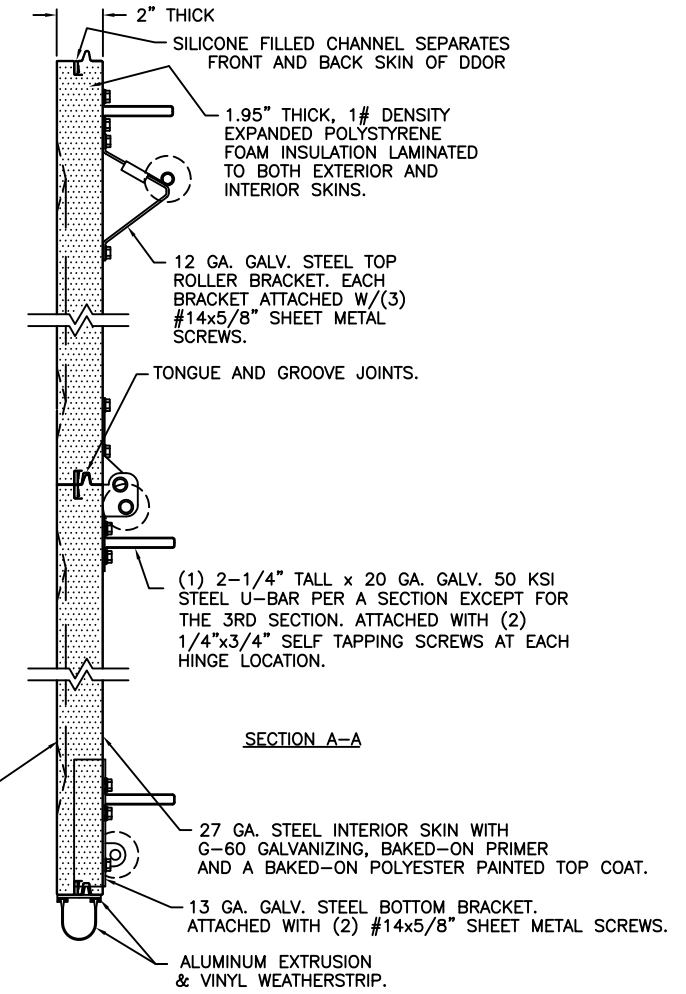
WIND SPEED (MPH)	≤ 100	110	110	120
EXPOSURE LEVEL	B or C	B	C	B
MEAN ROOF HEIGHT	30'	30'	24'	30'

OPTIONAL WINDOW LITE DSB GLASS OR 1/8" ACRYLIC AVAILABLE. OPTIONAL ACRYLIC GLAZING IS PLASKOLITE OPTIX OR LUCITE CP APPROVED CC2 PLASTIC IN ACCORDANCE WITH IBC/FBC 2606 (SEE SECTION B-B) SHORT LITE SHOWN, LONG LITE ALSO AVAIL (LONG LITE FRAME NOT TO EXCEED 42" WIDE X 16" TALL)



VERTICAL JAMB ATTACHMENT (C-90 BLOCK OR 2000 PSI MIN. CONCRETE COLUMN): 3/8"x4" SLEEVE ANCHORS ON 24" CENTERS (BOTH C-90 BLOCK OR 2000 PSI MIN. CONCRETE) OR 1/4"x4" TAPCON SCREWS ON 24" CENTERS (2000 PSI MIN. CONCRETE). WASHERS INCLUDED WITH SLEEVE ANCHORS. 1" O.D. WASHERS REQUIRED WITH TAPCONS. ANCHORS MAY BE COUNTERSUNK (BUT NOT REQUIRED) TO PROVIDE A FLUSH MOUNTING SURFACE. HORIZONTAL JAMBS DO NOT TRANSFER LOAD.

VERTICAL JAMB ATTACHMENT (WOOD FRAME BUILDINGS): 1/2"x3" LAG SCREWS ON 24" CENTERS. 1" O.D. WASHER REQUIRED. LAG SCREWS MAY BE COUNTERSUNK (BUT NOT REQUIRED) TO PROVIDE A FLUSH MOUNTING SURFACE. HORIZONTAL JAMBS DO NOT TRANSFER LOAD.



NOTE: THE DESIGN OF THE SUPPORTING STRUCTURAL ELEMENTS SHALL BE THE RESPONSIBILITY OF THE PROFESSIONAL OF RECORD FOR THE BUILDING OR STRUCTURE AND IN ACCORDANCE WITH CURRENT BUILDING CODES FOR THE LOADS LISTED ON THIS DRAWING.

DESIGN ENGINEER: MARK WESTERFIELD, P.E.
FLORIDA P.E. #48495, NC P.E. #23832, TEXAS P.E. #91513

DESIGN LOADS: +28.0 P.S.F. & -29.0 P.S.F.
TEST LOADS: +42.0 P.S.F. & -43.5 P.S.F.

Glopay Building Products Company	CLOPAY BUILDING PRODUCTS COMPANY 8585 DUKE BLVD. MASON, OH 45040 (513) 770 - 4800	MANUFACTURING PRODUCT CODE DSIE-1F471	WINDLOAD RATING W4	MAXIMUM DOOR SIZE 9'0" W X 12'0" H
		DATE 7/10/07	DESCRIPTION GALLERY 2" EPS SC +28/-29 PSF	
		DRAWN BY BFA	DRAWING NUMBER B 103969	REV. 00
		CHECKED BY		