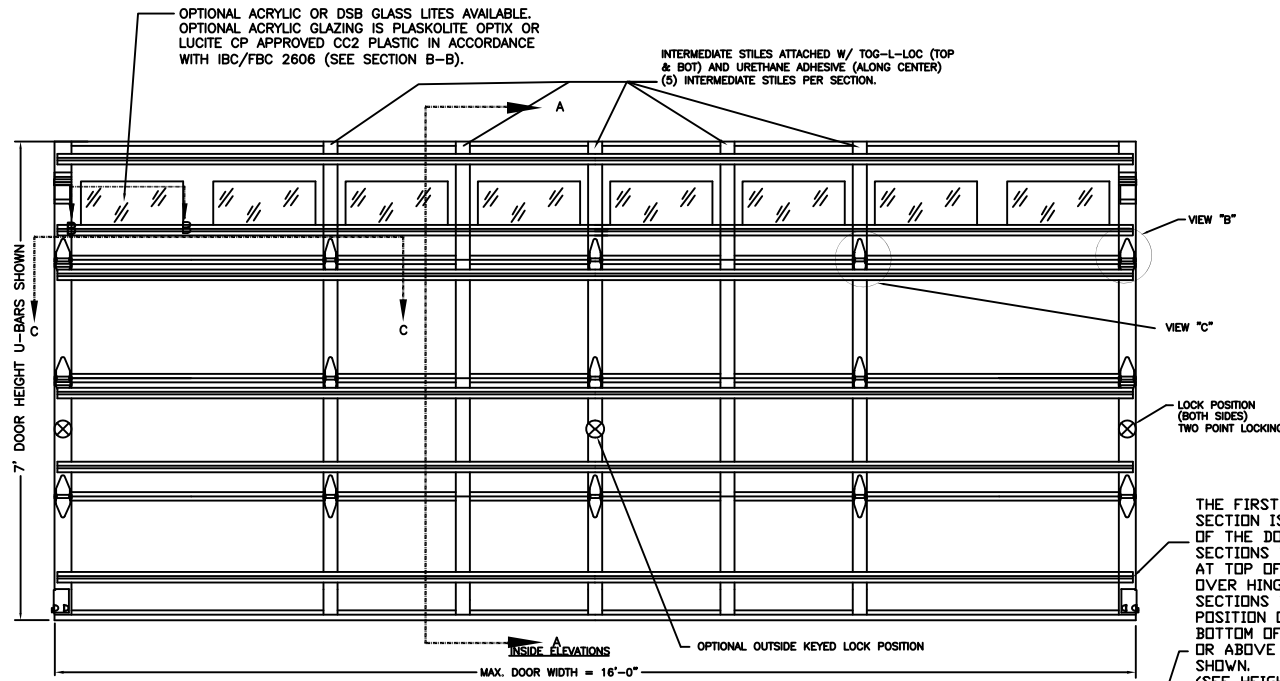
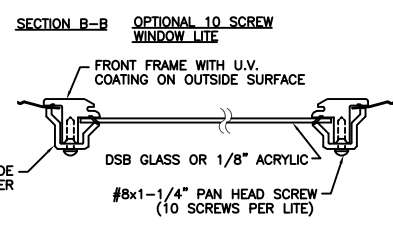
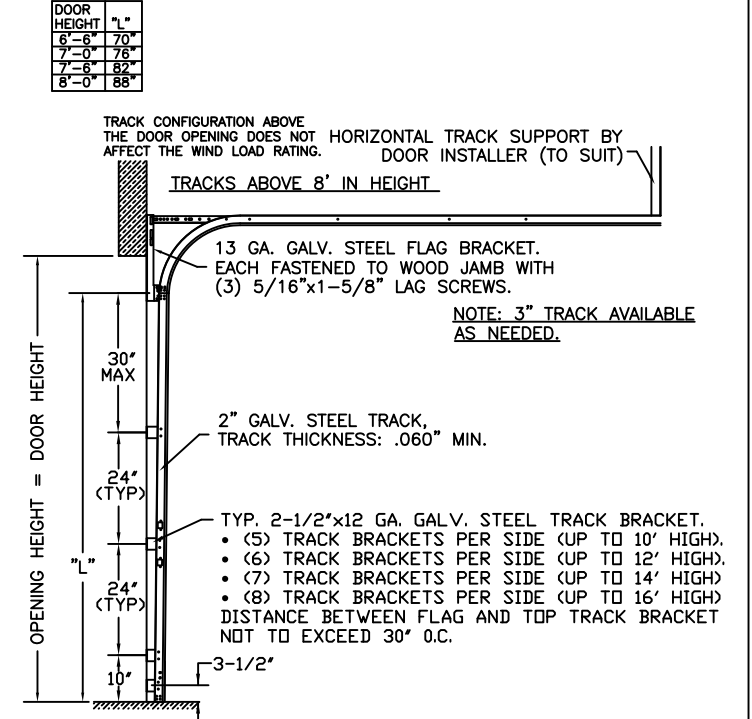
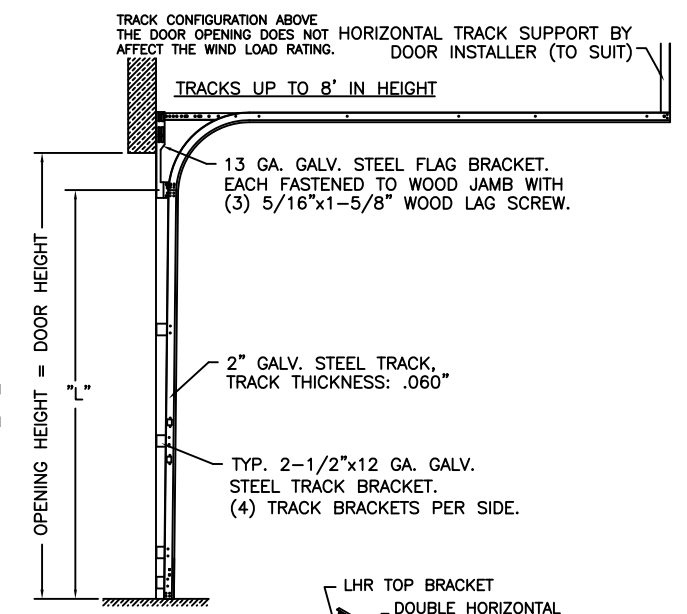
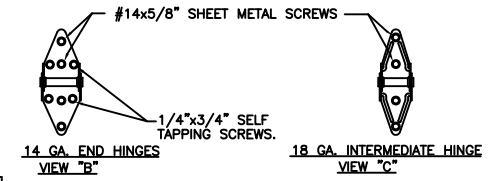


MODELS	GRAND HARBOR / STONE MANOR
CLOPAY	GH11, GH12, GH13, GH21, GH22, GHR11, GHR12, GHR13, GHR21, GHR22, GHRV11, GHRV12, GHRV13, GHRV21, GHRV22
IDEAL	SM11, SM12, SM13, SM21, SM22, MG11, MG12, MG13, MG21, MG22, MGV11, MGV12, MGV13, MGV21, MGV22
HOLMES	SP11, SP12, SP13, SP21, SP22, SPV11, SPV12, SPV13, SPV21, SPV22

REV	DATE	ECD	DESCRIPTION
02	04/13/07		ADDED OPTIONAL LITES; ADDED STONE MANOR.
03	04/20/07		UPDATED STRUT ILLUSTRATION.
04	07/10/08	ER1184	ADDED RETAIL MODELS.
05	10/10/08		REVISED FOR FPA.



DOOR HEIGHT	"L"
8'-6"	94"
9'-0"	100"
9'-6"	106"
10'-0"	112"
10'-6"	118"
11'-0"	124"
11'-6"	130"
12'-0"	136"
12'-6"	142"
13'-0"	148"
13'-6"	154"
14'-0"	160"
14'-6"	166"
15'-0"	172"
15'-6"	178"
16'-0"	184"

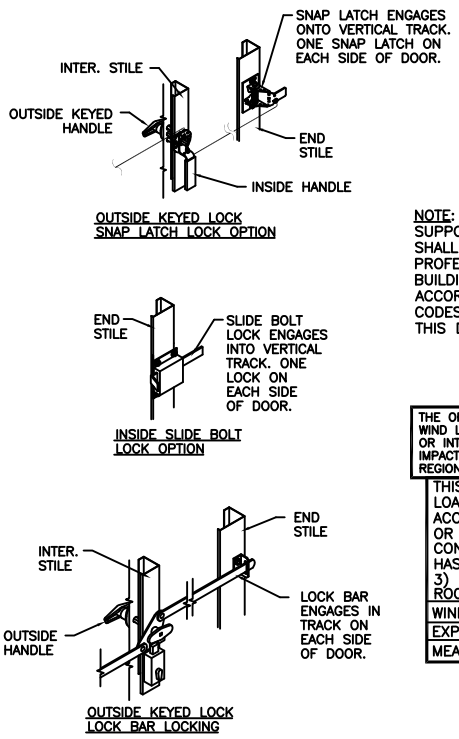


GRAND HARBOR 24GA W4-16

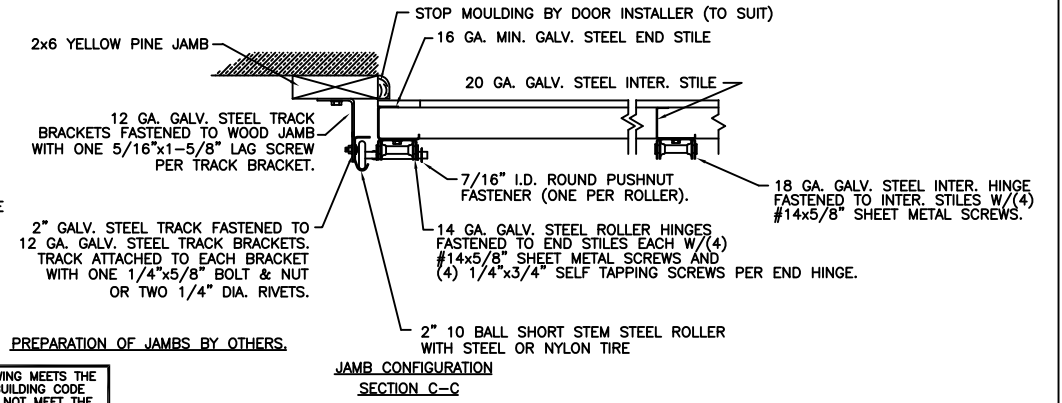
NO. OF U-BARS PER SECTION

DOOR HEIGHT	SECTION NUMBER	1	2	3	4	5	6	7	8
6	6	2	1	2	1	-	-	-	-
7	0	1	2	1	2	-	-	-	-
7	6	2	2	2	2	-	-	-	-
8	0	2	2	2	2	-	-	-	-
8	6	1	2	1	2	2	-	-	-
9	0	2	1	2	2	2	-	-	-
9	6	2	2	1	2	2	2	-	-
10	0	2	2	1	2	2	1	-	-
10	6	2	1	2	1	2	1	-	-
11	0	2	2	2	1	2	2	-	-
11	6	2	2	2	1	2	2	-	-
12	0	2	2	2	2	2	1	-	-
12	6	2	1	2	1	2	1	2	-
13	0	2	2	2	2	1	2	2	-
13	6	2	2	2	1	2	2	2	-
14	0	2	2	2	2	2	2	1	-
14	6	2	1	2	1	2	1	2	1
15	0	2	2	2	2	1	2	2	2
15	6	2	2	2	1	2	2	2	2
16	0	2	2	2	2	2	2	2	1

BOTTOM SECTION



NOTE: THE DESIGN OF THE SUPPORTING STRUCTURAL ELEMENTS SHALL BE THE RESPONSIBILITY OF THE PROFESSIONAL OF RECORD FOR THE BUILDING OR STRUCTURE AND IN ACCORDANCE WITH CURRENT BUILDING CODES FOR THE LOADS LISTED ON THIS DRAWING.

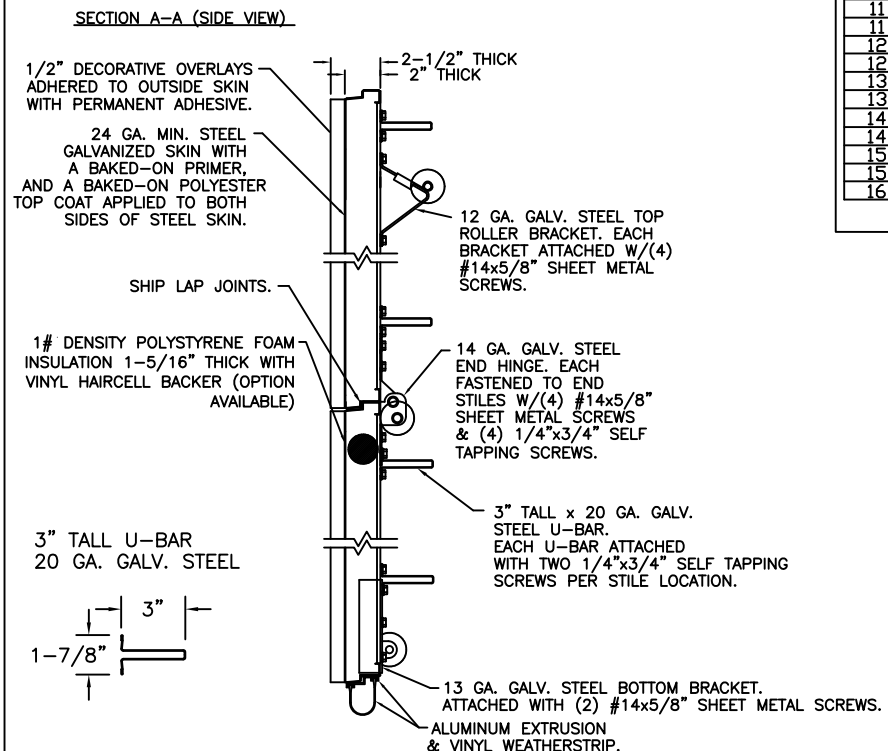


THIS DOOR MEETS OR EXCEEDS THE DESIGN LOADS FOR THE WIND SPEEDS LISTED BELOW ACCORDING TO THE FLORIDA BLDG. CODE OR IBC (ASCE7) FOR THE FOLLOWING CONDITIONS: 1) ENCLOSED BUILDING, 2) DOOR HAS 2' OF WIDTH IN BUILDING'S END ZONE, 3) IMPORTANCE FACTOR OF 1.0, 4) ANY ROOF SLOPE, AND 5) 50% SAFETY FACTOR.

WIND SPEED (MPH)	≤ 100	110	110	120
EXPOSURE LEVEL	B or C	B	C	B
MEAN ROOF HEIGHT	30'	30'	15'	30'

VERTICAL JAMB ATTACHMENT (C-90 BLOCK OR 2,000 PSI MIN. CONCRETE COLUMN): 3/8"x4" SLEEVE ANCHOR BOLTS ON 24" CENTERS (C-90 BLOCK) OR 20" CENTERS (2,000 PSI MIN. CONCRETE) OR 1/4"x4" TAPCON SCREWS ON 17-1/2" CENTERS (2,000 PSI MIN. CONCRETE). WASHERS INCLUDED WITH SLEEVE ANCHORS, 1" O.D. MIN. WASHERS REQUIRED WITH TAPCONS. ANCHORS MAY BE COUNTERSUNK (BUT NOT REQUIRED) TO PROVIDE A FLUSH MOUNTING SURFACE. HORIZONTAL JAMBS DO NOT TRANSFER LOAD.

VERTICAL JAMB ATTACHMENT (WOOD FRAME BUILDINGS): 1/2"x3" LAG SCREWS ON 24" CENTERS. 1" O.D. MIN. WASHER REQUIRED. LAG SCREWS MAY BE COUNTERSUNK (BUT NOT REQUIRED) TO PROVIDE A FLUSH MOUNTING SURFACE. HORIZONTAL JAMBS DO NOT TRANSFER LOAD.



CLOPAY BUILDING PRODUCTS COMPANY
8585 DUKE BLVD.
MASON, OH 45040
(513) 770-4800

Clopay Corporation All Rights Reserved.
The arrangements depicted herein are the sole property of the Clopay Corporation and may not be reproduced in any form without its written permission.

DESIGN ENGINEER: MARK WESTERFIELD, P.E.
FLORIDA P.E. #48495, NC P.E. #23832, TEXAS P.E. #91513

MANUFACTURING PRODUCT CODE
MPC: SPO-2F449

DATE: 11/01/06

DRAWN BY: BFA

CHECKED BY:

WINDLOAD RATING	MAX. DOOR SIZE:
W4	16'0"W x 16'0"H
DESCRIPTION: GRAND HARBOR 16'W +24/-24.5 PSF	
DRAWING NUMBER: B	103550