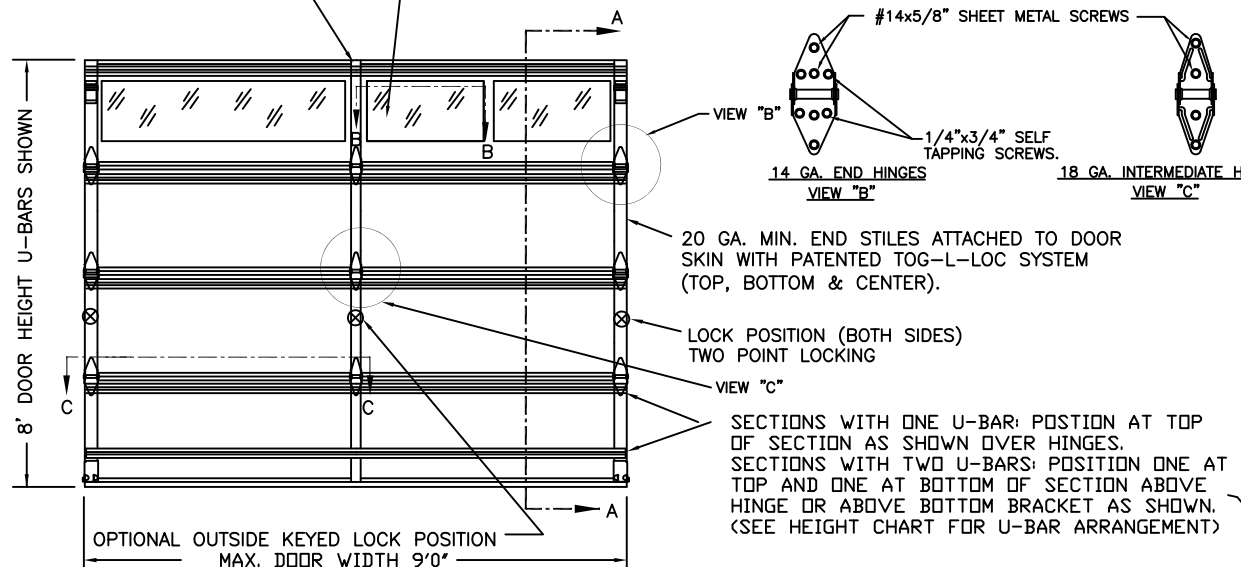


MODELS	
GRAND HARBOR / STONE MANOR	
CLOPAY	GH11, GH12, GH13, GH21, GH22, GHR11, GHR12, GHR13, GHR21, GHR22, GHRV11, GHRV12, GHRV13, GHRV21, GHRV22
IDEAL	SM11, SM12, SM13, SM21, SM22, MG11, MG12, MG13, MG21, MG22, MGV11, MGV12, MGV13, MGV21, MGV22
HOLMES	SP11, SP12, SP13, SP21, SP22, SPV11, SPV12, SPV13, SPV21, SPV22

MIN. (1) INTERMEDIATE STILE ATTACHED W/ TOG-L-LOC (TOP & BOT) AND URETHANE ADHESIVE

OPTIONAL ACRYLIC OR DSB GLASS LITES AVAILABLE. OPTIONAL ACRYLIC GLAZING IS PLASKOLITE OPTIX OR LUCITE CP APPROVED CC2 PLASTIC IN ACCORDANCE WITH IBC/FBC 2606 (SEE SECTION B-B). SHORT, LONG AND ARCH LITES (NOT SHOWN) ARE APPROVED. MAX GLAZING SIZE NOT TO EXCEED 41" x 15".



1# DENSITY POLYSTYRENE FOAM INSULATION 1-5/16" THICK WITH VINYL HAIRCELL BACKER (OPTION AVAILABLE)

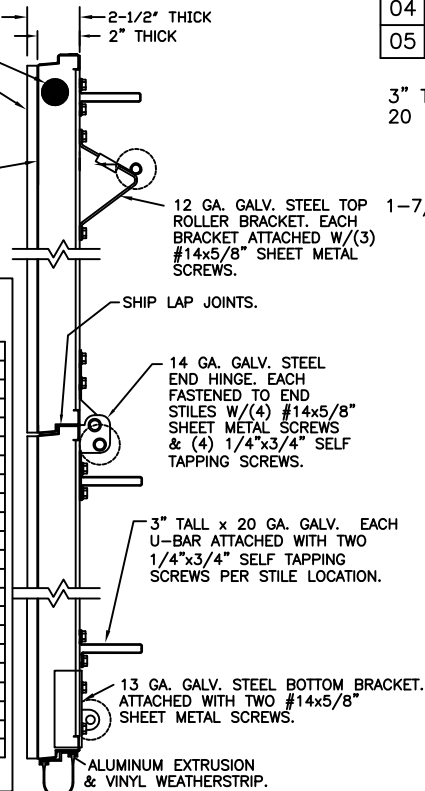
1/2" DECORATIVE OVERLAYS ADHERED TO OUTSIDE SKIN WITH PERMANENT ADHESIVE.

24 GA. MIN. STEEL SKIN COATED WITH GALV., BAKED-ON PRIMER, AND A BAKED-ON POLYESTER TOP COAT APPLIED TO BOTH SIDES OF STEEL SKIN.

GRAND HARBOR 24GA W4-09

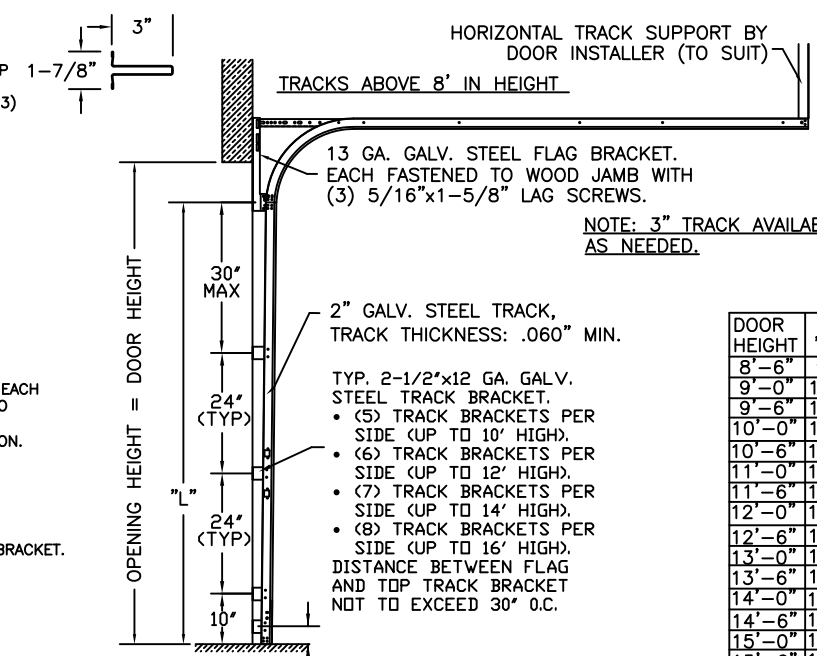
DOOR HEIGHT FT. IN.	NO. OF U-BARS PER SECTION							
	1	2	3	4	5	6	7	8
6 6	1	1	1	1	-	-	-	-
7 0	1	1	1	1	1	-	-	-
7 6	2	1	1	1	-	-	-	-
8 0	2	1	1	1	-	-	-	-
8 6	2	1	1	1	1	-	-	-
9 0	2	1	1	1	1	-	-	-
9 6	2	1	1	1	1	-	-	-
10 0	2	1	1	1	1	-	-	-
10 6	2	1	1	1	1	1	-	-
11 0	2	1	1	1	1	1	-	-
11 6	2	1	1	1	1	1	-	-
12 0	2	1	1	1	1	1	-	-
12 6	2	1	1	1	1	1	1	-
13 0	2	1	1	1	1	1	1	-
13 6	2	1	1	1	1	1	1	-
14 0	2	1	1	1	1	1	1	-
14 6	2	1	1	1	1	1	1	1
15 0	2	1	1	1	1	1	1	1
15 6	2	1	1	1	1	1	1	1
16 0	2	1	1	1	1	1	1	1

SECTION A-A (SIDE VIEW)



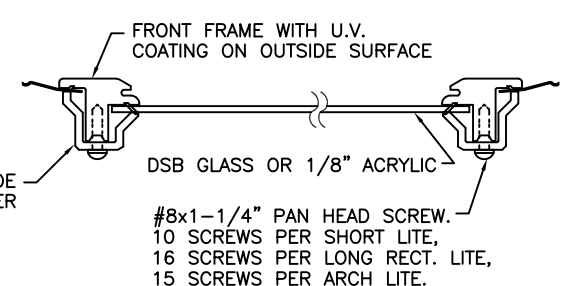
REV	DATE	ECO	DESCRIPTION
02	01/26/07		STRUT UPDATES
03	04/13/07		ADDED OPTIONAL LITES; ADDED STONE MANOR
04	07/10/08	ER1184	ADDED RETAIL MODEL NUMBERS
05	08/08/08	-	ADDED LONG LITE OPTION.

3" TALL U-BAR
20 GA. GALV. STEEL



DOOR HEIGHT	"L"
8'-6"	94"
9'-0"	100"
9'-6"	106"
10'-0"	112"
10'-6"	118"
11'-0"	124"
11'-6"	130"
12'-0"	136"
12'-6"	142"
13'-0"	148"
13'-6"	154"
14'-0"	160"
14'-6"	166"
15'-0"	172"
15'-6"	178"
16'-0"	184"

SECTION B-B OPTIONAL 10 SCREW WINDOW LITE

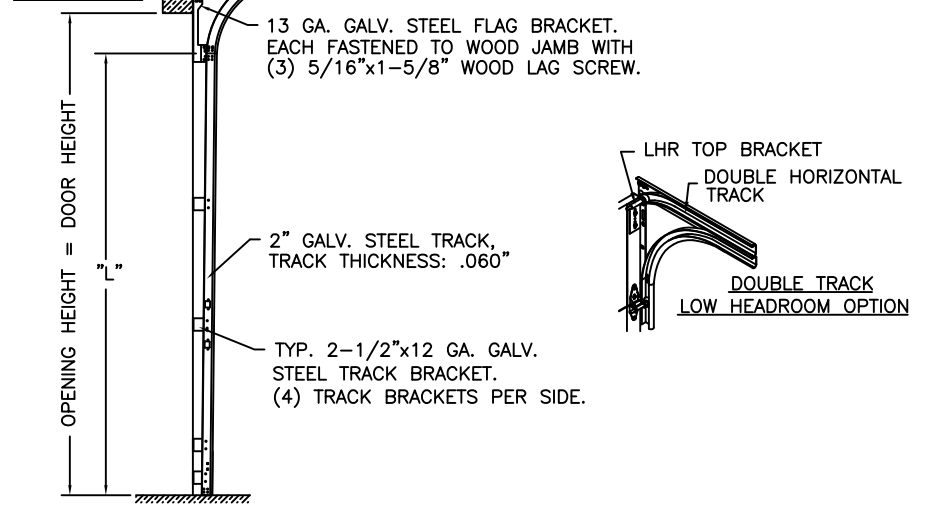


THE OPTIONAL GLAZING SHOWN ON THIS DRAWING MEETS THE WIND LOAD REQUIREMENTS OF THE FLORIDA BUILDING CODE OR INTERNATIONAL BUILDING CODE BUT DOES NOT MEET THE IMPACT RESISTANT REQUIREMENT FOR WINDBORNE DEBRIS REGIONS (REF. CHAPTER 16 FBC/IBC)

THIS DOOR MEETS OR EXCEEDS THE DESIGN LOADS FOR THE WIND SPEEDS LISTED BELOW ACCORDING TO THE FLORIDA BLDG. CODE OR IBC (ASCE7) FOR THE FOLLOWING CONDITIONS: 1) ENCLOSED BUILDING, 2) DOOR HAS 2' OF WIDTH IN BUILDING'S END ZONE, 3) IMPORTANCE FACTOR OF 1.0, 4) ANY ROOF SLOPE, AND 5) 50% SAFETY FACTOR.

WIND SPEED (MPH)	≤ 100	110	110	120
EXPOSURE LEVEL	B or C	B	C	B
MEAN ROOF HEIGHT	30'	30'	20'	30'

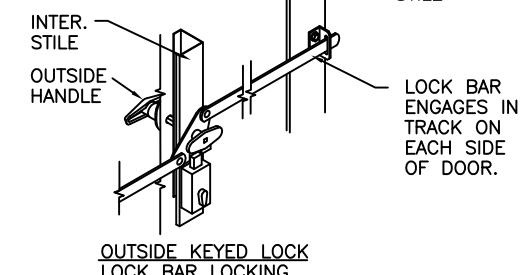
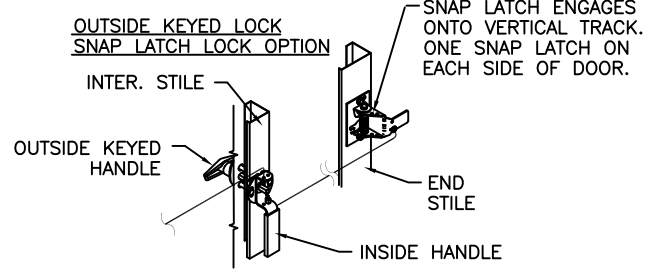
DOOR HEIGHT	"L"
6'-6"	70"
7'-0"	76"
7'-6"	82"
8'-0"	88"



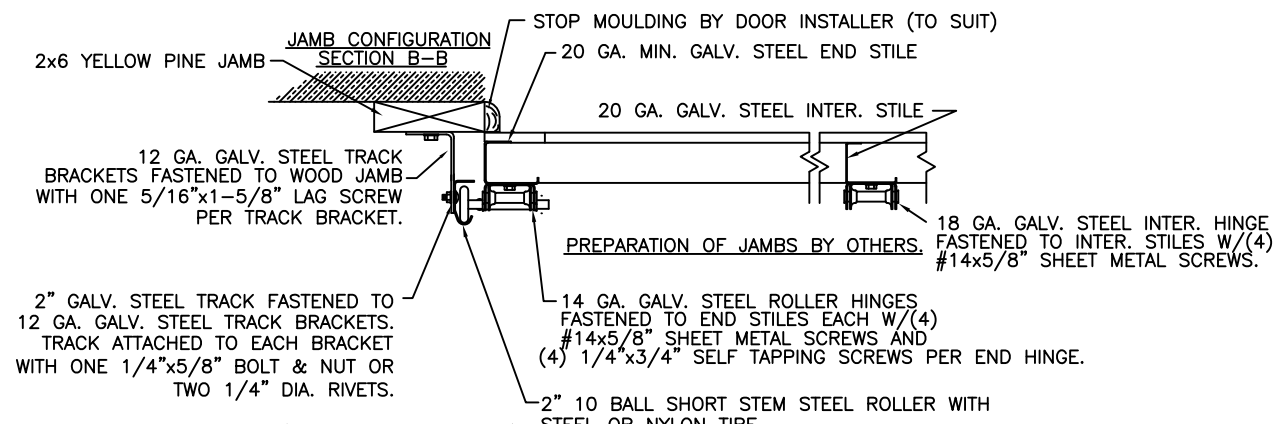
ORIGINAL DRAWINGS ARE SIGNED IN BLUE INK WITH A RAISED SEAL (EMBOSS).

DESIGN ENGINEER: MARK WESTERFIELD, P.E.
FLORIDA P.E. #48495, NC P.E. #23832, TEXAS P.E. #91513

DESIGN LOADS: +25.0 P.S.F. & -32.0 P.S.F.
TEST LOADS: +37.5 P.S.F. & -48.0 P.S.F.



VERTICAL JAMB ATTACHMENT (C-90 BLOCK OR 2,000 PSI MIN. CONCRETE COLUMN): 3/8"x4" SLEEVE ANCHOR BOLTS ON 24" CENTERS (BOTH C-90 BLOCK OR 2,000 PSI MIN. CONCRETE) OR 1/4"x4" TAPCON SCREWS ON 21" CENTERS (2,000 PSI MIN. CONCRETE). WASHERS INCLUDED WITH SLEEVE ANCHORS, 1" O.D. WASHERS REQUIRED WITH TAPCONS. ANCHORS MAY BE COUNTERSUNK (BUT NOT REQUIRED) TO PROVIDE A FLUSH MOUNTING SURFACE. HORIZONTAL JAMBS DO NOT TRANSFER LOAD.



VERTICAL JAMB ATTACHMENT (WOOD FRAME BUILDINGS): 1/2"x3" LAG SCREWS ON 24" CENTERS, 1" O.D. WASHER REQUIRED. LAG SCREWS MAY BE COUNTERSUNK (BUT NOT REQUIRED) TO PROVIDE A FLUSH MOUNTING SURFACE. HORIZONTAL JAMBS DO NOT TRANSFER LOAD.

NOTE: THE DESIGN OF THE SUPPORTING STRUCTURAL ELEMENTS SHALL BE THE RESPONSIBILITY OF THE PROFESSIONAL OF RECORD FOR THE BUILDING OR STRUCTURE AND IN ACCORDANCE WITH CURRENT BUILDING CODES FOR THE LOADS LISTED ON THIS DRAWING.



CLOPAY BUILDING PRODUCTS COMPANY
8585 DUKE BLVD.
MASON, OH 45040
(513) 770-4800

Clopay Corporation All Rights Reserved.

MANUFACTURING PRODUCT CODE MPC: SPO-2F449	WINDLOAD RATING W4	MAX. DOOR SIZE: 9'W x 16'H
DATE: 11/01/06	DESCRIPTION: GRAND HARBOR 9'W +25/-32	
DRAWN BY: BFA	DRAWING NUMBER: B 103549	
CHECKED BY:		