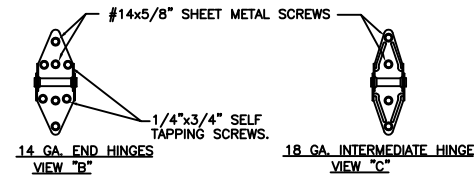


MODELS		INSULATED	
STANDARD			
CLOPAY	G4S, GS4, G4L, GL4, GD4S, GD4L, GR4S, GR4L	G4SV, GS4V, G4LV, GL4V, GD4SV, GD4LV, GR4SV, GR4LV	
IDEAL	E4S, E4L, ED4S, ED4L, MR4S, MR4L	E4SV, E4LV, ED4SV, ED4LV, MR4SV, MR4LV	
HOLMES	SS4, SL4, AR4S, AR4L	SS4V, SL4V, AR4SV, AR4LV	

THE OPTIONAL GLAZING SHOWN ON THIS DRAWING MEETS THE WIND LOAD REQUIREMENTS OF THE FLORIDA BUILDING CODE OR INTERNATIONAL BUILDING CODE BUT DOES NOT MEET THE IMPACT RESISTANT REQUIREMENT FOR WINDBORNE DEBRIS REGIONS (REF. CHAPTER 16 FBC/IBC)



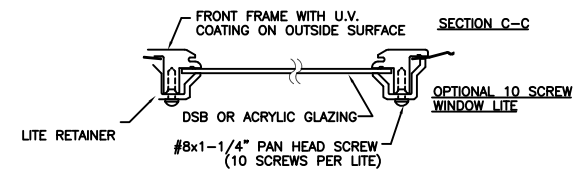
REV	DATE	DESCRIPTION
00	06/02/05	D/N WAS 103400. DP WAS +24/-24.5 PSF. MAX HT WAS 8'.
01	08/05/05	REVISED STRUT PATTERN
02	09/26/05	ADDED ROLLER OPTION
03	04/30/07	ADDED NEW MODEL NUMBERS, REVISED 7'H STRUT PATTERN
04	07/26/07	ADDED UPDATED GLAZING OPTION

STILE TABLE FOR LONG EMBOSS DOORS

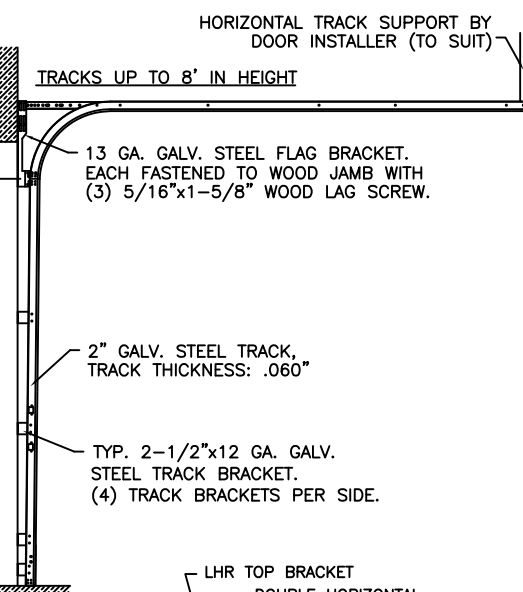
DOOR WIDTH	# OF HINGES	# OF STD. INTERM. STILES	# OF COMM. INTERM. STILES
9'-2" TO 10'-0"	1	1	0
10'-2" TO 11'-4"	N/A	N/A	N/A
11'-6" TO 13'-10"	2	2	1
14'-0" TO 16'-0"	3	3	2

STILE TABLE FOR SHORT EMBOSS DOORS

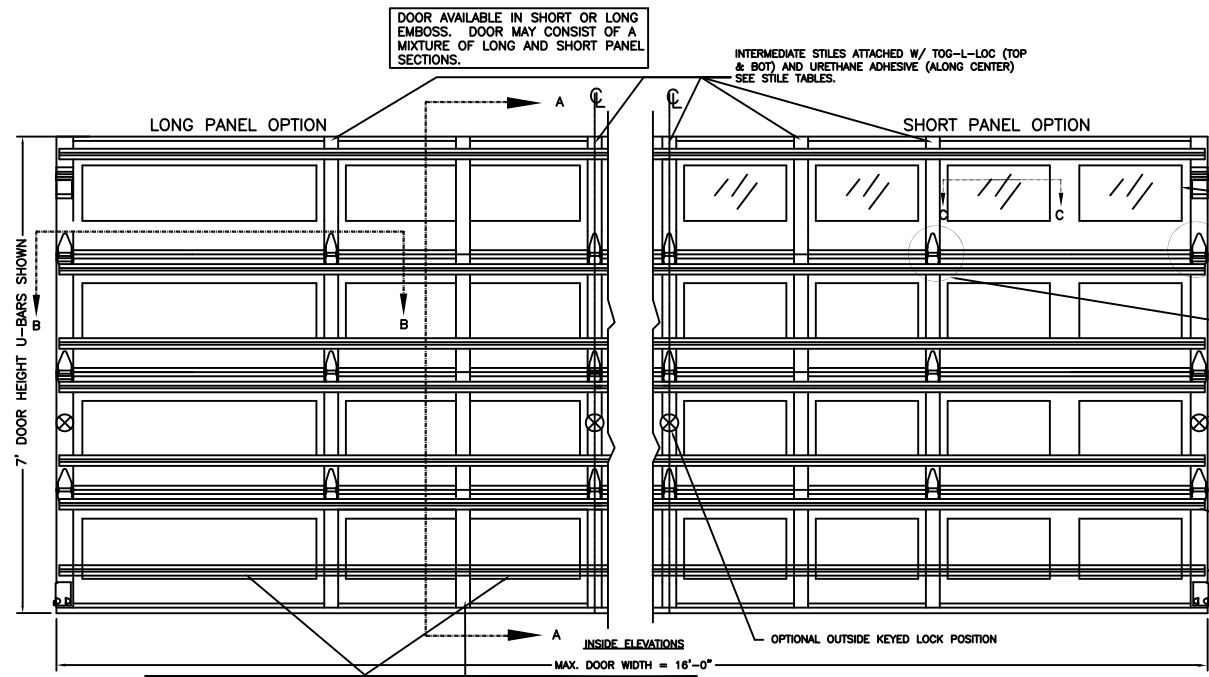
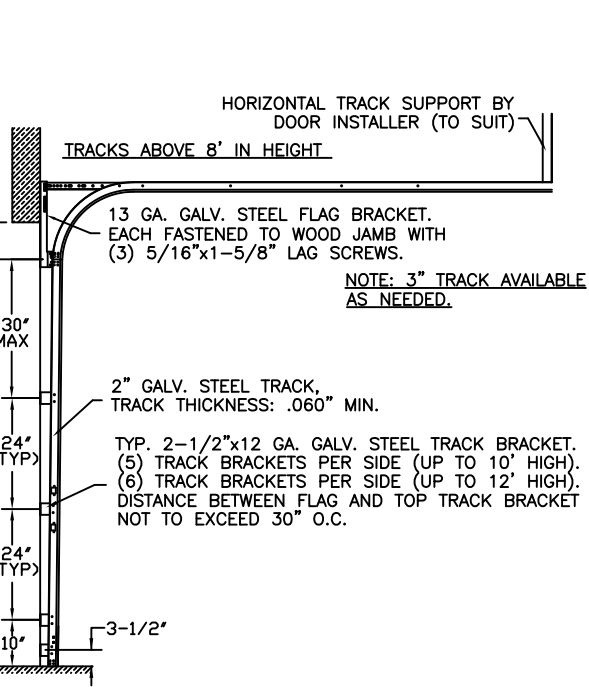
DOOR WIDTH	# OF HINGES	# OF STD. INTERM. STILES
9'-2" TO 10'-0"	1	1
10'-2" TO 11'-4"	N/A	N/A
11'-6" TO 13'-10"	2	3
14'-0" TO 16'-0"	3	5



DOOR HEIGHT	"L"
6'-6"	70"
7'-0"	76"
7'-6"	82"
8'-0"	88"



DOOR HEIGHT	"L"
8'-6"	94"
9'-0"	100"
9'-6"	106"
10'-0"	112"
10'-6"	118"
11'-0"	124"
11'-6"	130"
12'-0"	136"



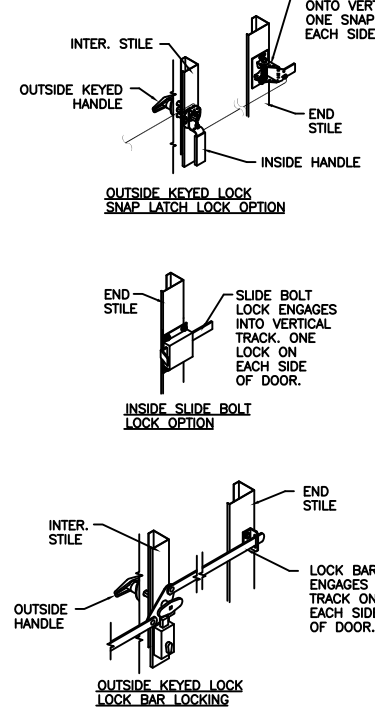
OPTIONAL WINDOW LITES DSB GLASS OR 1/8" ACRYLIC AVAILABLE. OPTIONAL ACRYLIC GLAZING IS PLASKOLITE OPTIX OR LUCITE CP APPROVED CC2 PLASTIC IN ACCORDANCE WITH IBC/FBC 2606. (SEE SECTION C-C)

SECTIONS WITH ONE U-BAR: POSITION AT TOP OF SECTION AS SHOWN OVER HINGES.
SECTIONS WITH TWO U-BARS: POSITION ONE AT TOP AND ONE AT BOTTOM OF SECTION ABOVE HINGE OR ABOVE BOTTOM BRACKET AS SHOWN.
SECTIONS WITH THREE U-BARS: POSITION FIRST TWO AS ABOVE; POSITION THIRD U-BAR IN MIDDLE OF SECTION.
(SEE HEIGHT CHART FOR U-BAR ARRANGEMENT)

FOR MODELS G4L, GD4L, G4LV, GD4LV, E4L, ED4L, E4LV, ED4LV, MR4L, MR4LV, GL4, GR4L, GL4V, GR4LV, SL4, AR4L, SL4V, AR4LV ONLY (LONG EMBOSS DOORS):
ADDITIONAL 18 GA. COMMERCIAL INTERM. STILES REQUIRED FROM 11'-6" WIDE TO 16'-0" WIDE
SEE 'STILE TABLE FOR LONG EMBOSS DOORS'.
THESE COMMERCIAL CENTER STILES ARE ATTACHED MIDPOINT BETWEEN THE EXISTING RESIDENTIAL CENTER STILES. COMMERCIAL CENTER STILES ARE ATTACHED WITH TOG-L-LOC (TOP & BOTTOM) OR (4) 3/16" POP RIVETS OR (4) #8 SHEET METAL SCREWS.

GALLERY 24GA W4-16
ND. OF STRUTS PER SECTION

DOOR HEIGHT	SECTION NUMBER	ND. OF STRUTS PER SECTION					
		1	2	3	4	5	6
6	0	3	2	2	-	-	-
6	3	-	-	-	-	-	-
6	6	-	-	-	-	-	-
6	9	-	-	-	-	-	-
7	0	2	1	2	1	-	-
7	3	2	2	2	2	-	-
7	6	2	2	2	2	-	-
7	9	3	2	2	2	-	-
8	0	3	2	2	2	-	-
8	3	-	-	-	-	-	-
8	6	-	-	-	-	-	-
8	9	-	-	-	-	-	-
9	0	3	2	2	2	-	-
9	3	-	-	-	-	-	-
9	6	-	-	-	-	-	-
9	9	-	-	-	-	-	-
10	0	3	2	2	2	-	-
10	3	-	-	-	-	-	-
10	6	-	-	-	-	-	-
10	9	-	-	-	-	-	-
11	0	3	2	2	2	-	-
11	3	3	3	3	3	-	-
11	6	3	3	3	3	-	-
11	9	3	3	3	3	-	-
12	0	3	2	2	2	-	-



NOTE 2: THE DESIGN OF THE SUPPORTING STRUCTURAL ELEMENTS SHALL BE THE RESPONSIBILITY OF THE PROFESSIONAL OF RECORD FOR THE BUILDING OR STRUCTURE AND IN ACCORDANCE WITH CURRENT BUILDING CODES FOR THE LOADS LISTED ON THIS DRAWING.

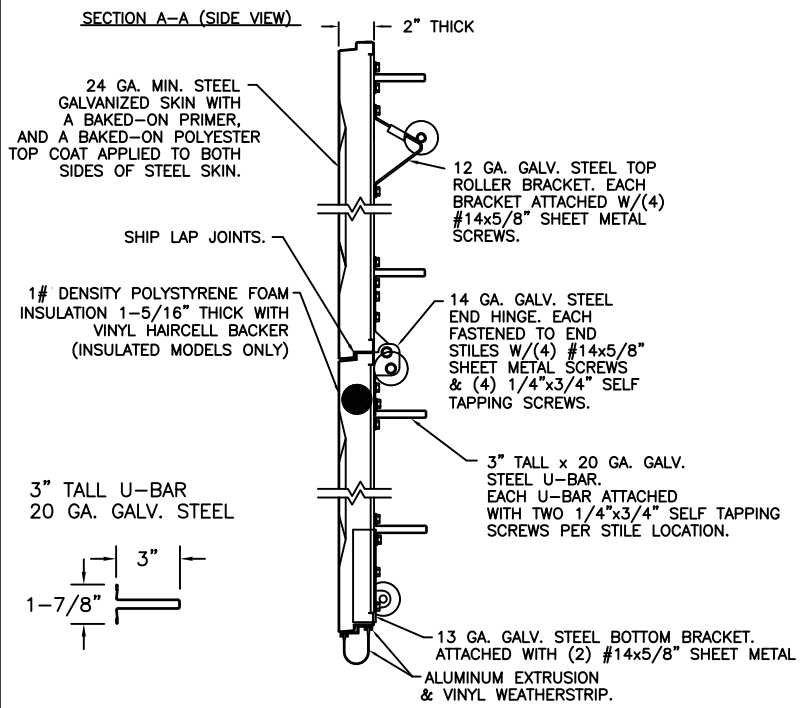
WIND SPEED (MPH)	≤ 110	120	120	130
EXPOSURE LEVEL	B or C	B	C	B
MEAN ROOF HEIGHT	30'	30'	16'	30'

VERTICAL JAMB ATTACHMENT (C-90 BLOCK OR 2,000 PSI MIN. CONCRETE COLUMN):
3/8"x4" SLEEVE ANCHOR BOLTS ON 21" CENTERS (C-90 BLOCK) OR 24" CENTERS (2,000 PSI MIN. CONCRETE) OR 1/4"x4" TAPCON SCREWS ON 17-1/2" CENTERS (2,000 PSI MIN. CONCRETE). WASHERS INCLUDED WITH SLEEVE ANCHORS. 1" O.D. MIN. WASHERS REQUIRED WITH TAPCONS. ANCHORS MAY BE COUNTERSUNK (BUT NOT REQUIRED) TO PROVIDE A FLUSH MOUNTING SURFACE. HORIZONTAL JAMBS DO NOT TRANSFER LOAD.

VERTICAL JAMB ATTACHMENT (WOOD FRAME BUILDINGS):
1/2"x3" LAG SCREWS ON 19" CENTERS. 1" O.D. MIN. WASHER REQUIRED. LAG SCREWS MAY BE COUNTERSUNK (BUT NOT REQUIRED) TO PROVIDE A FLUSH MOUNTING SURFACE. HORIZONTAL JAMBS DO NOT TRANSFER LOAD.

DESIGN ENGINEER: MARK WESTERFIELD, P.E.
FLORIDA P.E. #48495, NC P.E. #23832, TEXAS P.E. #91513

DESIGN LOADS: +25.0 PSF & -25.0 PSF.
TEST LOADS: +37.5 PSF & -37.5 PSF.



CLOPAY BUILDING PRODUCTS COMPANY
8585 DUKE BLVD.
MASON, OH 45040
(513) 770-4800
Clopay Corporation All Rights Reserved.
The arrangements depicted herein are the sole property of the Clopay Corporation and may not be reproduced in any form without its written permission.

MANUFACTURING PRODUCT CODE
SHORT PANEL: PAN-2F443
LONG PANEL: PAN-2F441
DATE: 6/01/05
DRAWN BY: RJK

WINDLOAD RATING	MAX. DOOR SIZE
W4	16'0"W x 12'0"H
DESCRIPTION: G4S, G4SV, G4L, G4LV; 16'W +25/-25 PSF	
DRAWING NUMBER: B 103454	