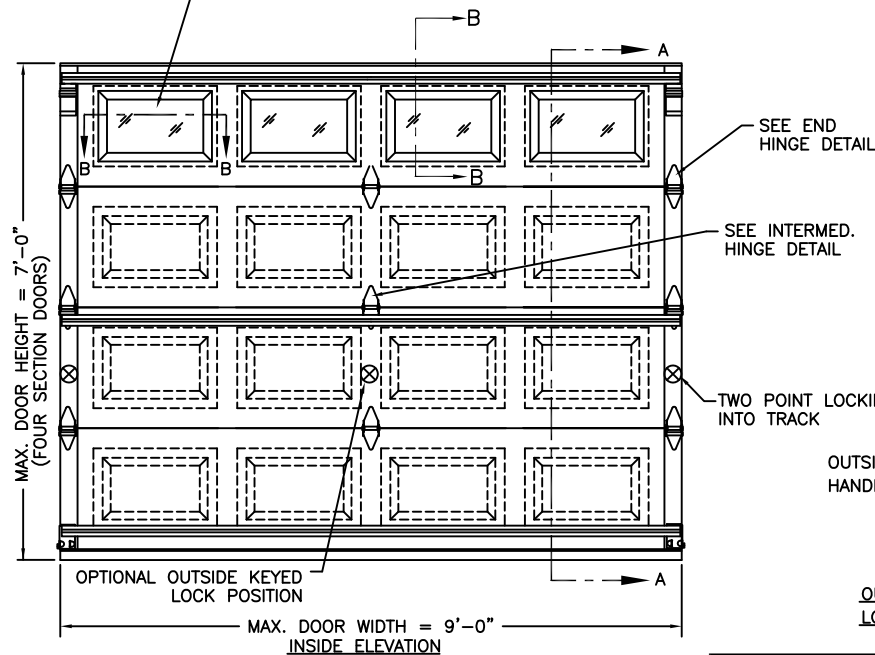


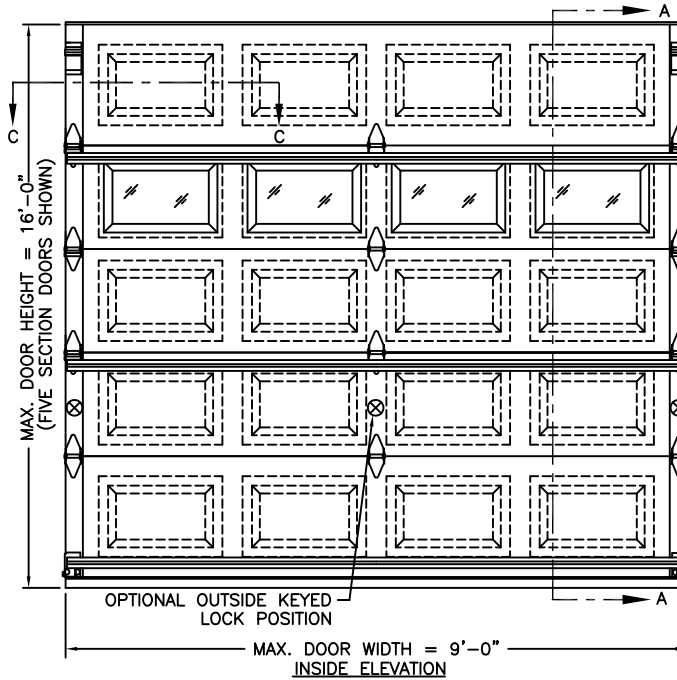
MODELS	27 GA	27 GA EXT
CLOPAY	2050, 2051, 4050, 4051	2053, 4053
IDEAL	135, 136, DP38, FL38	134, RP38
HOLMES	62, 62G, 65	64, 64G
	SHORT/FLUSH PANEL	LONG PANEL

NOTE: MAXIMUM SECTION HEIGHT IS 21"

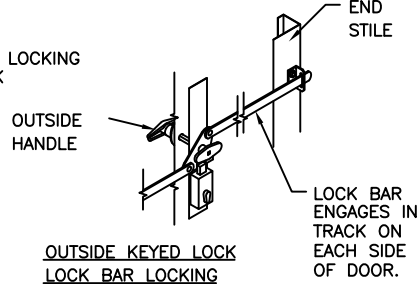
OPTIONAL WINDOW LITES DSB GLASS OR 1/8" ACRYLIC AVAILABLE. OPTIONAL ACRYLIC GLAZING IS PLASKOLITE OPTIX OR LUCITE CP APPROVED CC2 PLASTIC IN ACCORDANCE WITH IBC/FBC 2606. (SEE SECTION B-B)



SHORT PANEL SHOWN



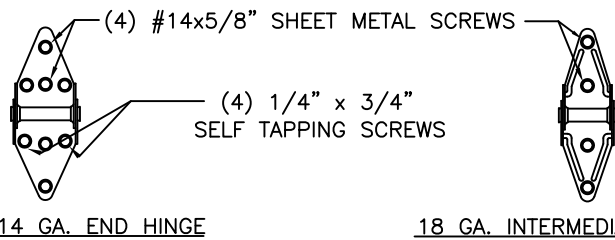
SHORT PANEL SHOWN



THIS DOOR MEETS OR EXCEEDS THE DESIGN LOADS FOR THE WIND SPEEDS LISTED BELOW ACCORDING TO THE FLORIDA BLDG. CODE OR IBC (ASCE7) FOR THE FOLLOWING CONDITIONS: 1) ENCLOSED BUILDING, 2) DOOR HAS 2' OF WIDTH IN BUILDING'S END ZONE, 3) IMPORTANCE FACTOR OF 1.0, 4) ANY ROOF SLOPE, AND 5) 50% SAFETY FACTOR.

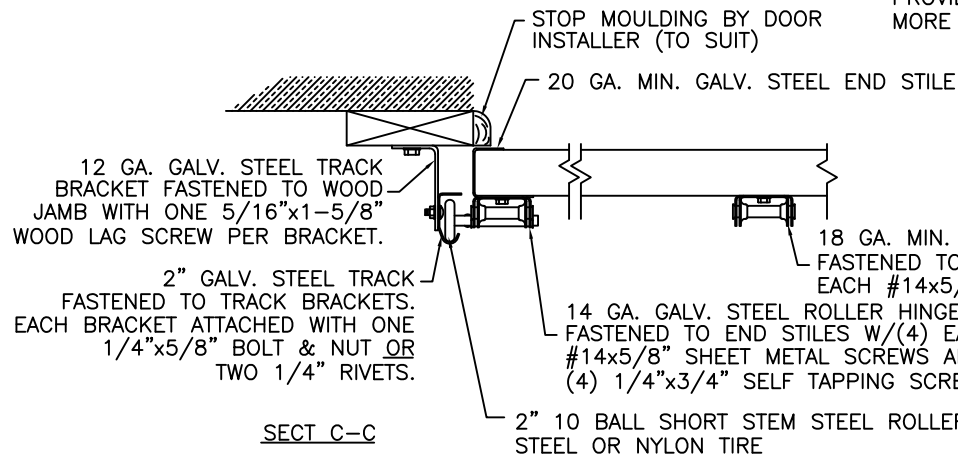
WIND SPEED (MPH)	≤ 90	90	100	100
EXPOSURE LEVEL	B	C	B	C
MEAN ROOF HEIGHT	30'	25'	30'	N/A

NOTE: FOR DOORS OVER 8'-0" HIGH, TRACK CONFIGURATION SHALL NOT EXCEED MAXIMUM SPACING PROVIDED. CONSULT FACTORY FOR MORE DETAIL IF RQD.

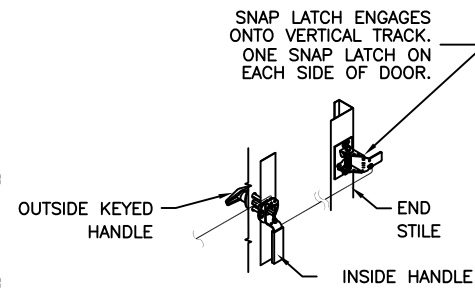


14 GA. END HINGE

18 GA. INTERMEDIATE HINGE



SECT C-C

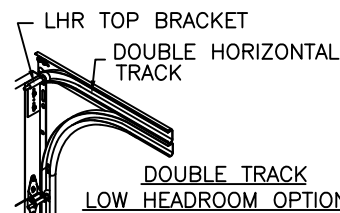


OUTSIDE KEYS LOCK SNAP LATCH LOCK OPTION

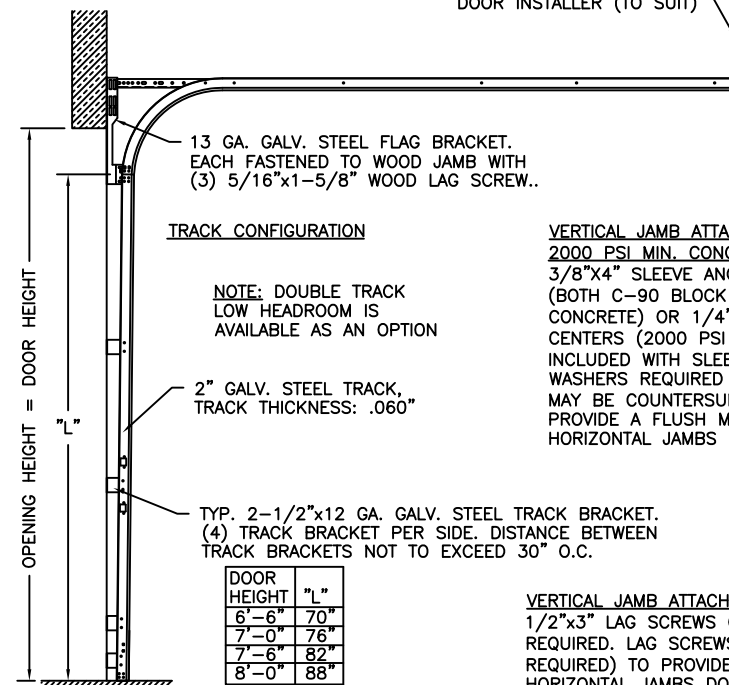
TWO POINT LOCKING INTO TRACK

27 GA. STEEL MIN. EXTERIOR SKIN WITH G-40 GALVANIZING, BAKED-ON PRIMER AND A BAKED-ON POLYESTER PAINTED TOP COAT.

THE OPTIONAL GLAZING SHOWN ON THIS DRAWING MEETS THE WIND LOAD REQUIREMENTS OF THE FLORIDA BUILDING CODE OR INTERNATIONAL BUILDING CODE BUT DOES NOT MEET THE IMPACT RESISTANT REQUIREMENT FOR WINDBORNE DEBRIS REGIONS (REFER TO CHAPTER 16 FBC / IBC).



DOUBLE TRACK LOW HEADROOM OPTION



TRACK CONFIGURATION

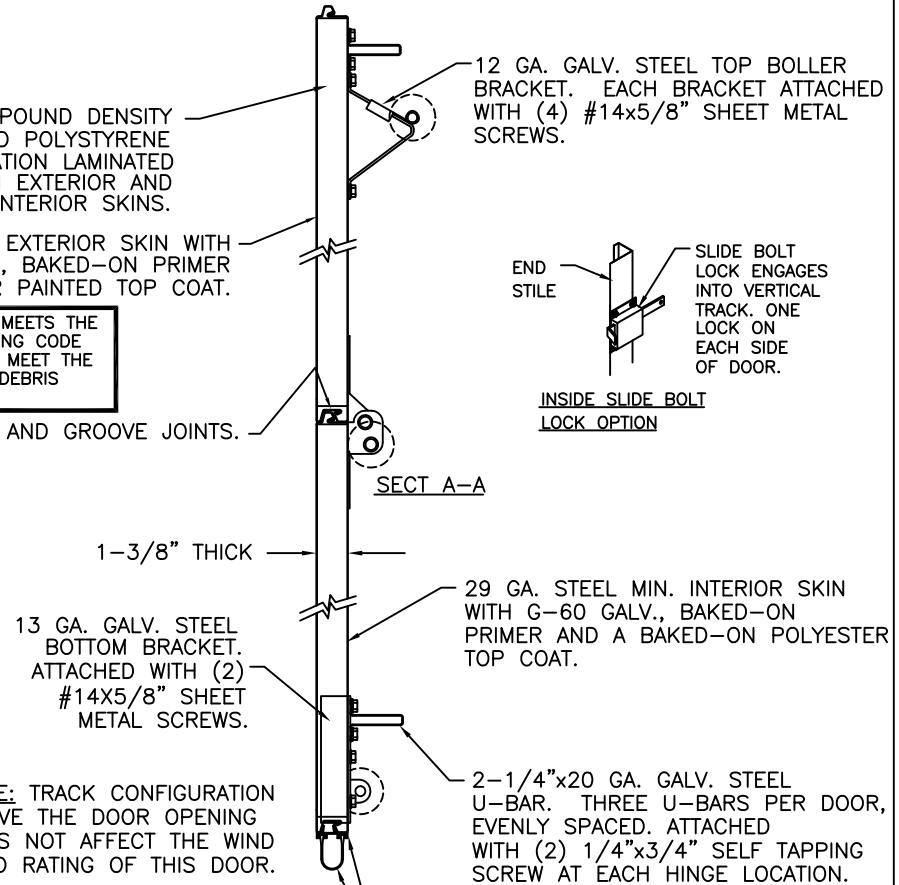
NOTE: DOUBLE TRACK LOW HEADROOM IS AVAILABLE AS AN OPTION

TYP. 2-1/2" x 12 GA. GALV. STEEL TRACK BRACKET. (4) TRACK BRACKET PER SIDE. DISTANCE BETWEEN TRACK BRACKETS NOT TO EXCEED 30" O.C.

DOOR HEIGHT	"L"
6'-6"	70"
7'-0"	76"
7'-6"	82"
8'-0"	88"

NOTE: THE DESIGN OF THE SUPPORTING STRUCTURAL ELEMENTS SHALL BE THE RESPONSIBILITY OF THE PROFESSIONAL OF RECORD FOR THE BUILDING OR STRUCTURE AND IN ACCORDANCE WITH CURRENT BUILDING CODES FOR THE LOADS LISTED ON THIS DRAWING.

REV	DATE	DESCRIPTION
5	9/2003	MISC. CLARIFICATION NOTES
6	5/2004	ADD M/N 2053
7	7/2005	UPDATED CODE REF.
8	9/2005	ADDED ROLLER OPTION
9	11/30/07	COMBINED CLOPAY, IDEAL & HOLMES M/N
10	10/21/08	ADDED M/N 62G AND 64G, ADDED MPC



NOTE: TRACK CONFIGURATION ABOVE THE DOOR OPENING DOES NOT AFFECT THE WIND LOAD RATING OF THIS DOOR.

VERTICAL JAMB ATTACHMENT (C-90 BLOCK OR 2000 PSI MIN. CONCRETE COLUMN):

3/8" x 4" SLEEVE ANCHORS ON 24" CENTERS (BOTH C-90 BLOCK OR 2000 PSI MIN. CONCRETE) OR 1/4" x 4" TAPCONS ON 24" CENTERS (2000 PSI MIN. CONCRETE). WASHERS INCLUDED WITH SLEEVE ANCHORS. 1" O.D. WASHERS REQUIRED WITH TAPCONS. ANCHORS MAY BE COUNTERSUNK (BUT NOT REQUIRED) TO PROVIDE A FLUSH MOUNTING SURFACE. HORIZONTAL JAMBS DO NOT TRANSFER LOAD.

VERTICAL JAMB ATTACHMENT (WOOD FRAME BUILDINGS): 1/2" x 3" LAG SCREWS ON 24" CENTERS. 1" O.D. WASHER REQUIRED. LAG SCREWS MAY BE COUNTERSUNK (BUT NOT REQUIRED) TO PROVIDE A FLUSH MOUNTING SURFACE. HORIZONTAL JAMBS DO NOT TRANSFER LOAD.

DESIGN ENGINEER: MARK WESTERFIELD, P.E. FLORIDA P.E. #48495, NC P.E. #23832, TEXAS P.E. #91513  
DESIGN LOADS: +20 P.S.F. & -20 P.S.F.  
TEST LOADS: +30 P.S.F. & -30 P.S.F.



CLOPAY BUILDING PRODUCTS COMPANY  
8585 DUKE BLVD.  
MASON, OH 45040

(513) 770-4800

Clopay Corporation All Rights Reserved.

MANUFACTURING PRODUCT CODE: MPC: DSIE-1A171	PLDT: N/A	MAX. SIZE: 9'0" x 16'0"
DATE: 7/17/96	DESCRIPTION: 2050/4050/4053: 20 PSF DES. LOAD	
DRAWN BY: MWW	DRAWING NUMBER: B	VER: 101655 IBC