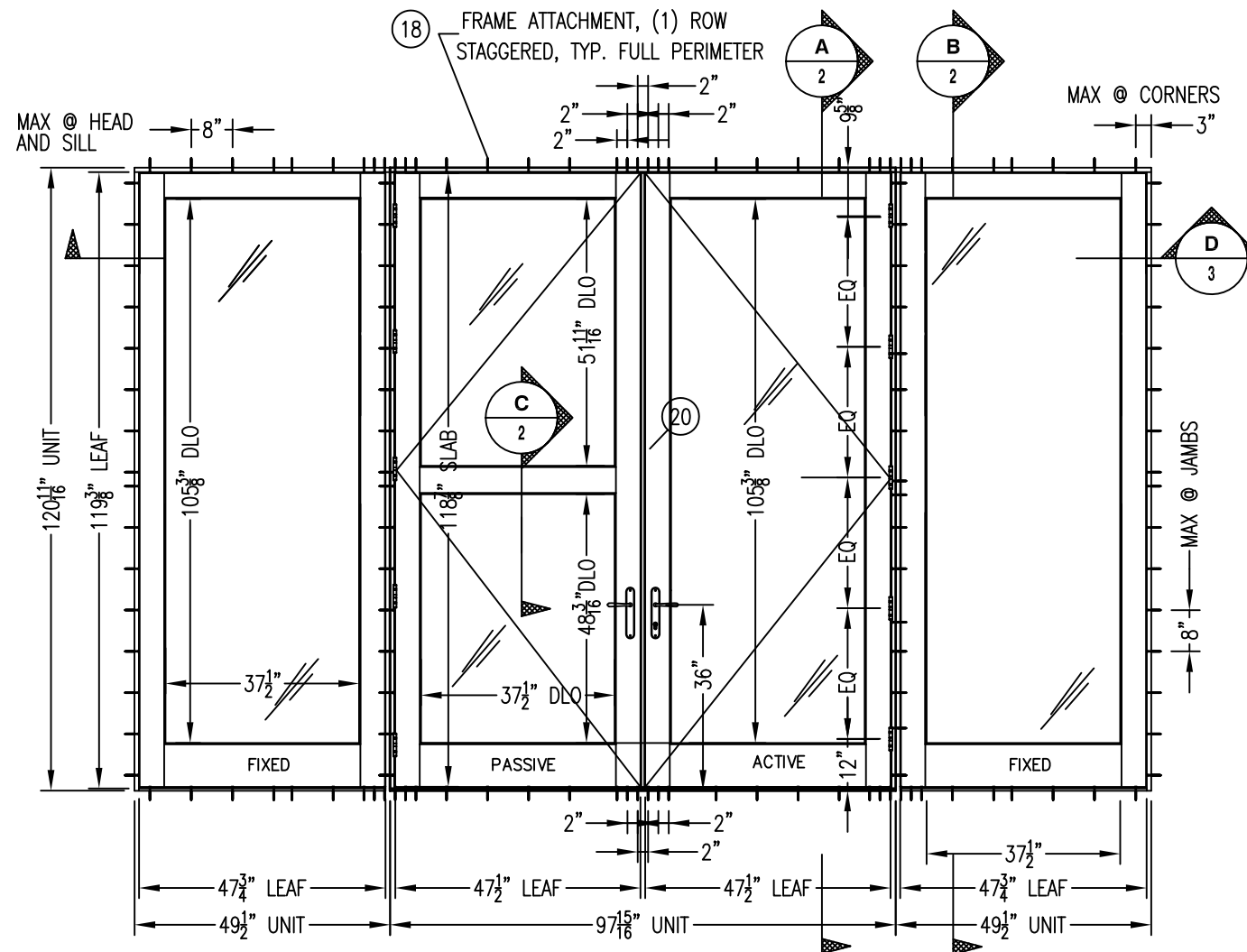


BORGZINNER AMERICAN DOOR OUTSWING WOOD ENTRANCE DOOR

GENERAL NOTES:

1. THIS PRODUCT, FABRICATED AND ANCHORED AS DETAILED IN THIS DRAWING, IS LARGE MISSILE IMPACT RESISTANT AND DOES NOT REQUIRE THE USE OF SHUTTERS.
2. THIS PRODUCT HAS BEEN TESTED TO TAS 201-94, TAS 202-94, AND TAS 203-94, AND MEETS THE REQUIREMENTS OF THE FLORIDA BUILDING CODE, 6TH EDITION (2017), INCLUDING THE HIGH VELOCITY HURRICANE ZONE.
3. ALLOWABLE CONFIGURATIONS: O (SINGLE PANEL), X (SINGLE LEAF), XX (DOUBLE LEAF), OXO (SINGLE WITH SIDELITES, OR OXXO (DOUBLE WITH SIDELITES)
4. THE DESIGN PRESSURE RATINGS IN THIS DRAWING ARE AS LIMITED BY ASTM E-1300 04E01/09 GLASS TABLES, AND TESTED PRESSURES.
5. THE 4/3 ALLOWABLE STRESS INCREASE HAS NOT BEEN USED IN THE ANCHOR ANALYSIS FOR THIS SYSTEM. THE 1.6 Cd FACTOR WAS USED IN THE ANALYSIS OF ANCHORAGE INTO WOOD SUBSTRATE.
6. ALL WOOD BUCKING OR FRAMING INDICATED IN THIS DRAWING SHALL BE SOUTHERN PINE OR BETTER, MIN. G = 0.55. INSTALLATION OF WOOD BUCKS TO THE SUBSTRATE TO BE ENGINEERED BY OTHERS OR AS APPROVED BY THE AUTHORITY HAVING JURISDICTION. WOOD FRAMING, BUCKING, OPENINGS & BUCKING FASTENERS MUST BE PROPERLY DESIGN & INSTALLED TO TRANSFER WIND LOADS TO THE STRUCTURE. ALL DETAILS IN THIS DRAWING WHICH SHOW INSTALLATION TO 2X WOOD APPLY EQUALLY TO WOOD FRAMING OR OPTIONAL INSTALLATION BY OTHERS OF 2X WOOD BUCKS OVER CONCRETE OR MASONRY SUBSTRATE.
7. DISSIMILAR MATERIALS THAT COME INTO CONTACT SHALL BE COATED OR OTHERWISE PROTECTED PER FBC TO PREVENT GALVANIC REACTIONS.
8. ALL HARDWARE & FASTENERS SHALL BE IN ACCORDANCE WITH THESE DRAWINGS & MAY NOT VARY UNLESS SPECIFICALLY MENTIONED ON THE DRAWINGS.
9. SPECIFIED EMBEDMENT TO BASE MATERIAL SHALL BE BEYOND WALL FINISH OR STUCCO.
10. SHIMS SHALL BE LOAD-BEARING (PLASTIC OR METALLIC) AND CAPABLE OF TRANSFERRING APPLIED LOADS FROM THE PRODUCTS TO THE OPENING SUBSTRATES. SHIM EACH ANCHOR LOCATION WHERE GAP GREATER THAN 1/16" EXISTS BETWEEN PRODUCT FRAME AND OPENING SUBSTRATE.
11. ALL BORGZINNER WOOD FRAMING TO BE SAPELLE WITH MIN. SPECIFIC GRAVITY OF 0.46



EXTERIOR ELEVATION, OXXO
(SHOWN WITH LAMINATED GLASS, APPLIES TO PANELS ALSO)

| FRAME ANCHOR REQUIREMENT TABLE | | | |
|--------------------------------|---|-------------------|--------------------|
| FRAME AND SILL SCREWS | | | |
| OPENING SUBSTRATE | INSTALLATION FASTENER TYPE | MINIMUM EMBEDMENT | MINIMUM EDGE DIST. |
| 2X MIN. SOUTHERN PINE (G=0.55) | (1) #10 STAINLESS STEEL WOOD SCREW THROUGH FRAMING AT EACH LOCATION SHOWN IN ELEVATIONS SHEETS 1A AND 1B. | 1 1/2" | 3/4" |

| DESIGN PRESSURE TABLE | | |
|---|-----------------------------|-------------------------------|
| CONFIGURATION | DESIGN PRESSURE RATING, PSF | IMPACT RESISTANCE |
| X, RAISED PANEL XX, RAISED PANEL | +/-70 | LARGE OR SMALL MISSILE IMPACT |
| O, LAMI GLASS OR RAISED PANEL X, LAMI GLASS XX, LAMI GLASS OXO, LAMI GLASS OR RAISED PANEL OXXO, LAMI GLASS OR RAISED PANEL | +/-50 | |

TABLE OF CONTENTS:

| REVISIONS | DATE | ISSUE | NOTES |
|-----------|------|-------|-------|
| | | | |
| | | | |
| | | | |
| | | | |
| | | | |
| | | | |

DRAWN BY: DATE

04/24/20

DRAWING NO.
FPA-AMER-DOOR

SHEET NO. 1A



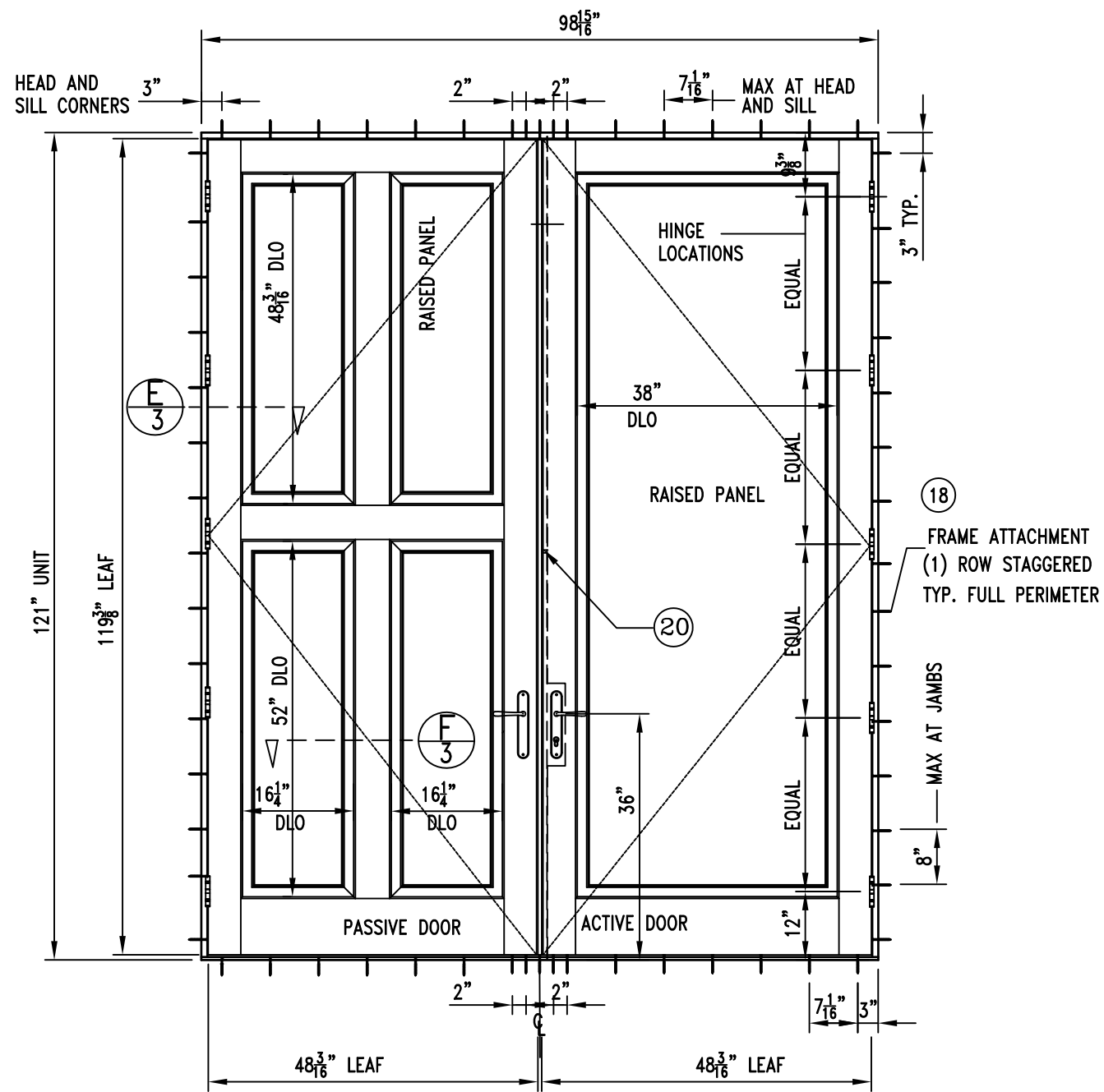
BORGZINNER, INC.
1160 W 13TH ST. UNIT 10
RIVIERA BEACH, FL 33404
PH. (561) 848-2538 FAX (561) 844-0011
http://www.borgzinner.com



8/13/2020
LUCAS TURNER

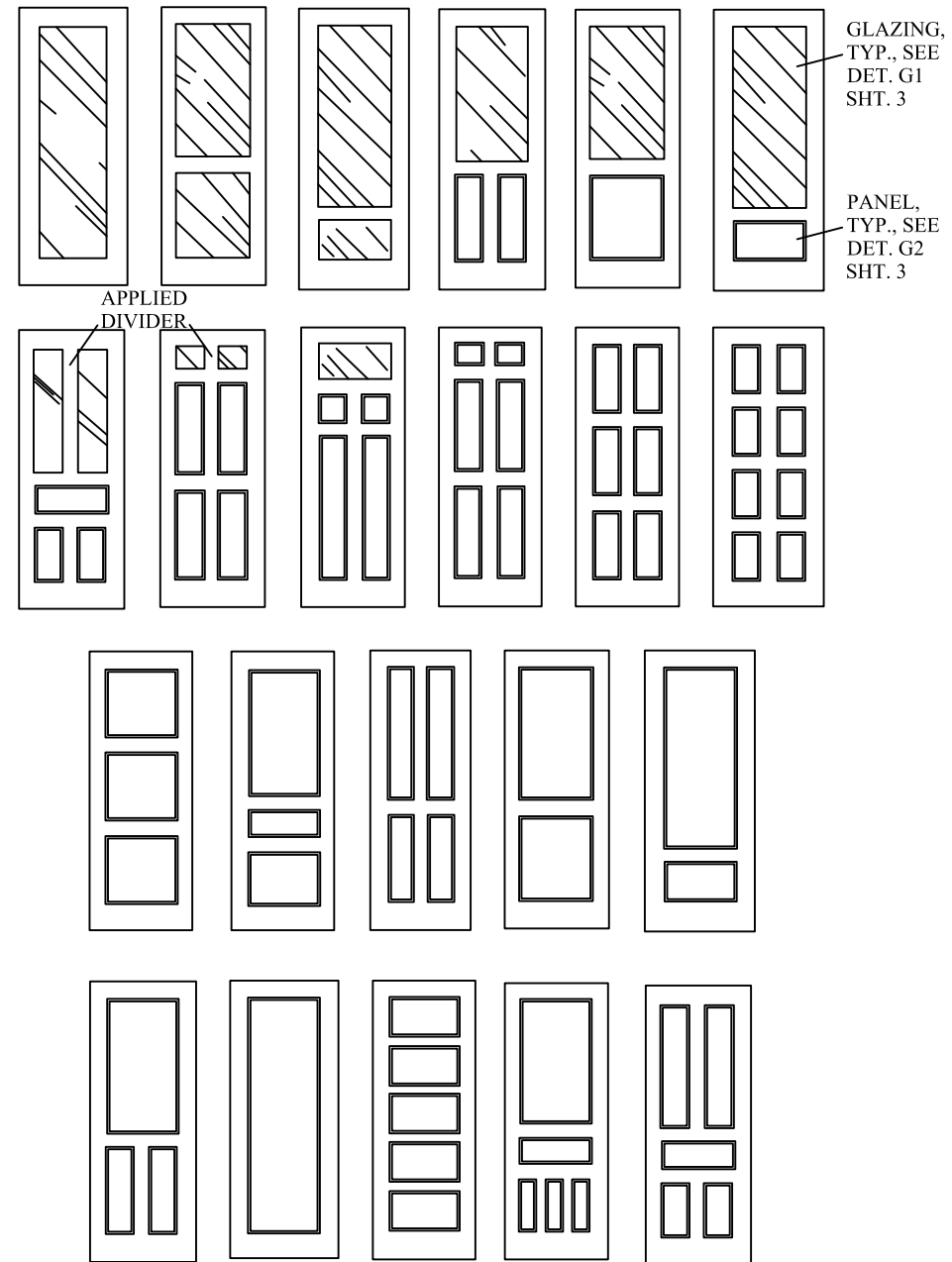
AMERICAN DOOR OUTSWING
WOOD ENTRANCE DOOR

LUCAS A. TURNER, FL PE # 58201
TURNER ENGINEERING & CONSULTING, INC.
(FBPE COA # 29779)
2428 OLD NATCHEZ TRC TRL.
CAMDEN, TN 38320 PH. 941-380-1574



EXTERIOR ELEVATION, XX


(SHOWN WITH PANELS, APPLIES TO LAMINATED GLASS ALSO.
FOR SECTION CALLOUTS NOT SHOWN, SEE OXXO ELEVATION SHEET 1)



APPROVED PANEL CONFIGURATIONS

MANUFACTURER

BORGZINNER, INC
 1160 W 13TH ST., UNIT 10
 RIVIERA BEACH, FL 33404
 PH. (561) 848-2538 FAX (561) 844-0011
<http://www.borgzinner.com>

LUCAS A. TURNER
 LICENSE
 No. 58201

 STATE OF
 FLORIDA
 PROFESSIONAL ENGINEER

8/13/2020
 LUCAS TURNER

AMERICAN DOOR OUTSWING
 WOOD ENTRANCE DOOR

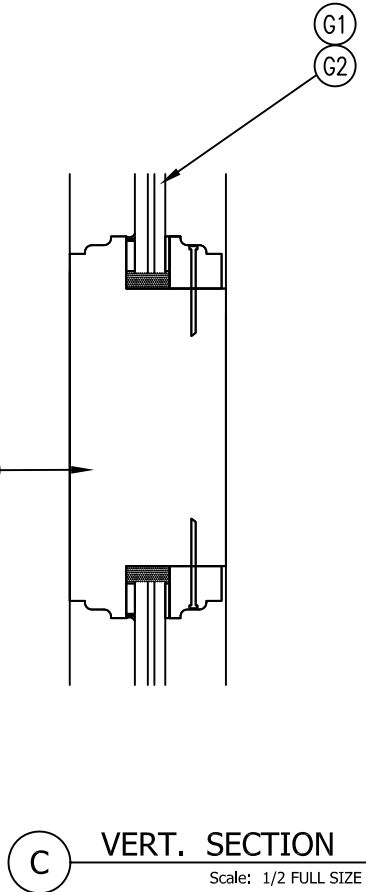
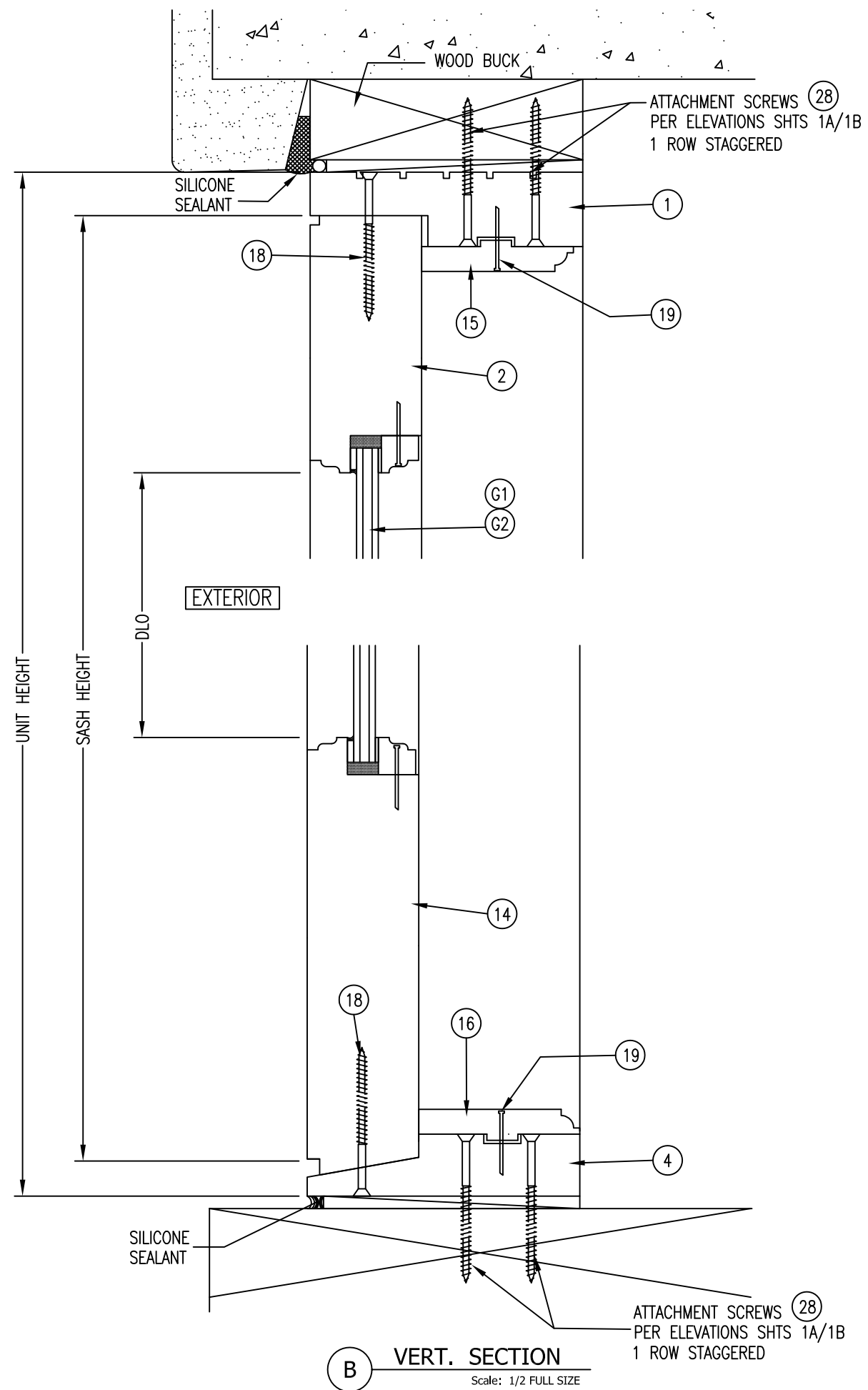
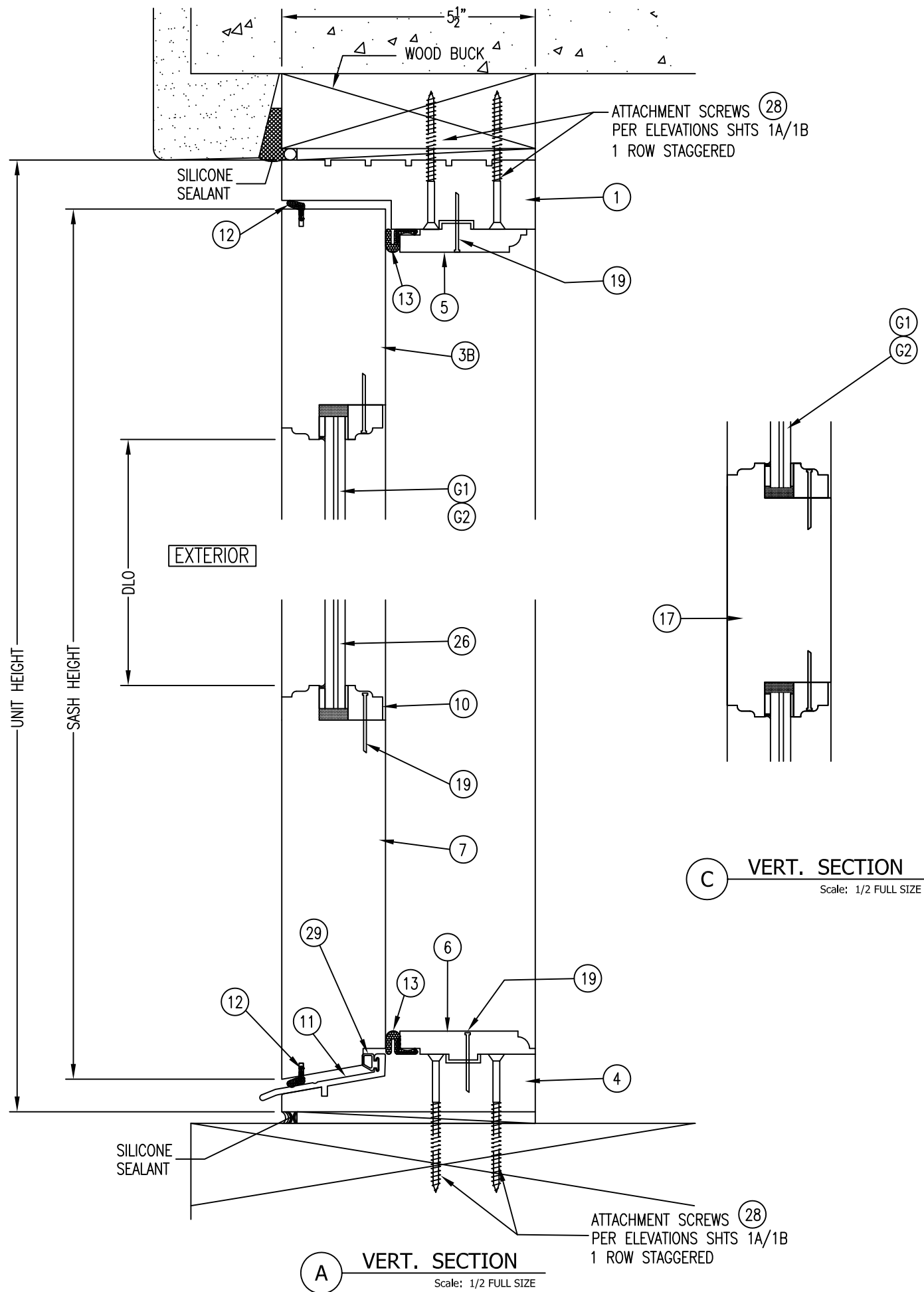
LUCAS A. TURNER, FL PE # 58201
 TURNER ENGINEERING & CONSULTING, INC.
 (FBPE COA # 29779)
 2428 OLD NATCHEZ TRC TRL.
 CAMDEN, TN 38320 PH. 941-380-1574

| REVISIONS | ISSUE | DATE | ISSUE NOTES |
|-----------|-------|------|-------------|
| | | | |
| | | | |
| | | | |
| | | | |

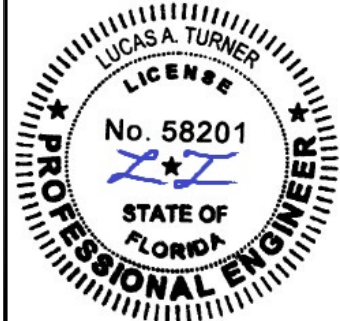
| | |
|-----------|----------|
| DRAWN BY: | DATE |
| | 04/24/20 |

DRAWING NO.
 FPA-AMER-DOOR

SHEET NO. 1B



BORGZINNER, INC.
1160 W 13TH ST, UNIT 10
RIVIERA BEACH, FL 33404
PH. (561) 848-2538 FAX (561) 844-0011
http://www.borgzinner.com



8/13/2020
LUCAS TURNER

AMERICAN DOOR OUTSWING
WOOD ENTRANCE DOOR

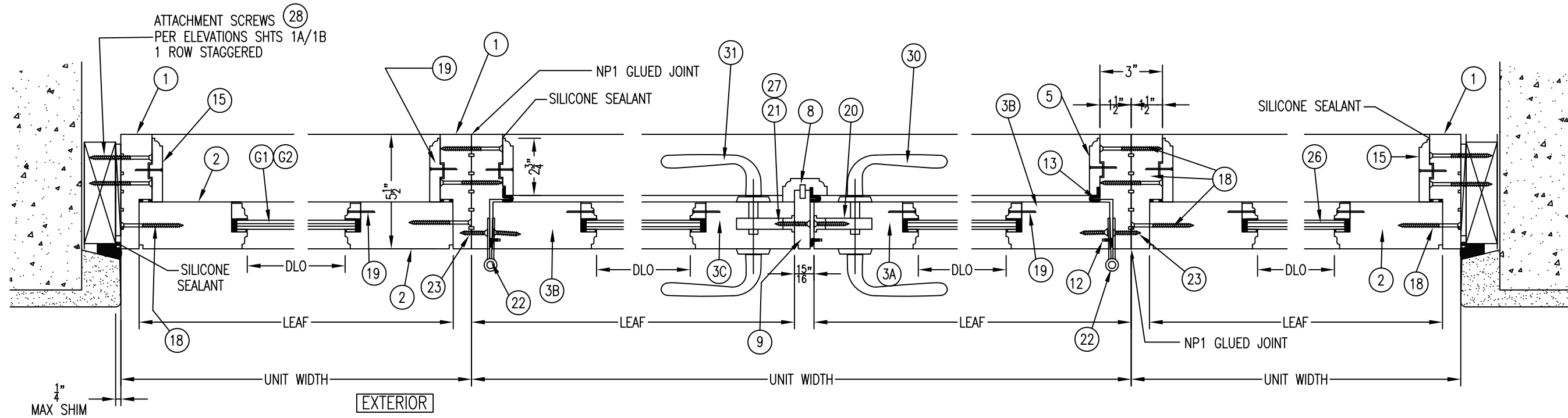
LUCAS A. TURNER, FL PE # 58201
TURNER ENGINEERING & CONSULTING, INC.
(FBPE COA # 29779)
2428 OLD NATCHEZ TRC TRL
CAMDEN, TN 38520 PH. 941-380-1574

| REVISIONS | ISSUE | DATE | ISSUE NOTES |
|-----------|-------|------|-------------|
| | | | |
| | | | |
| | | | |
| | | | |
| | | | |

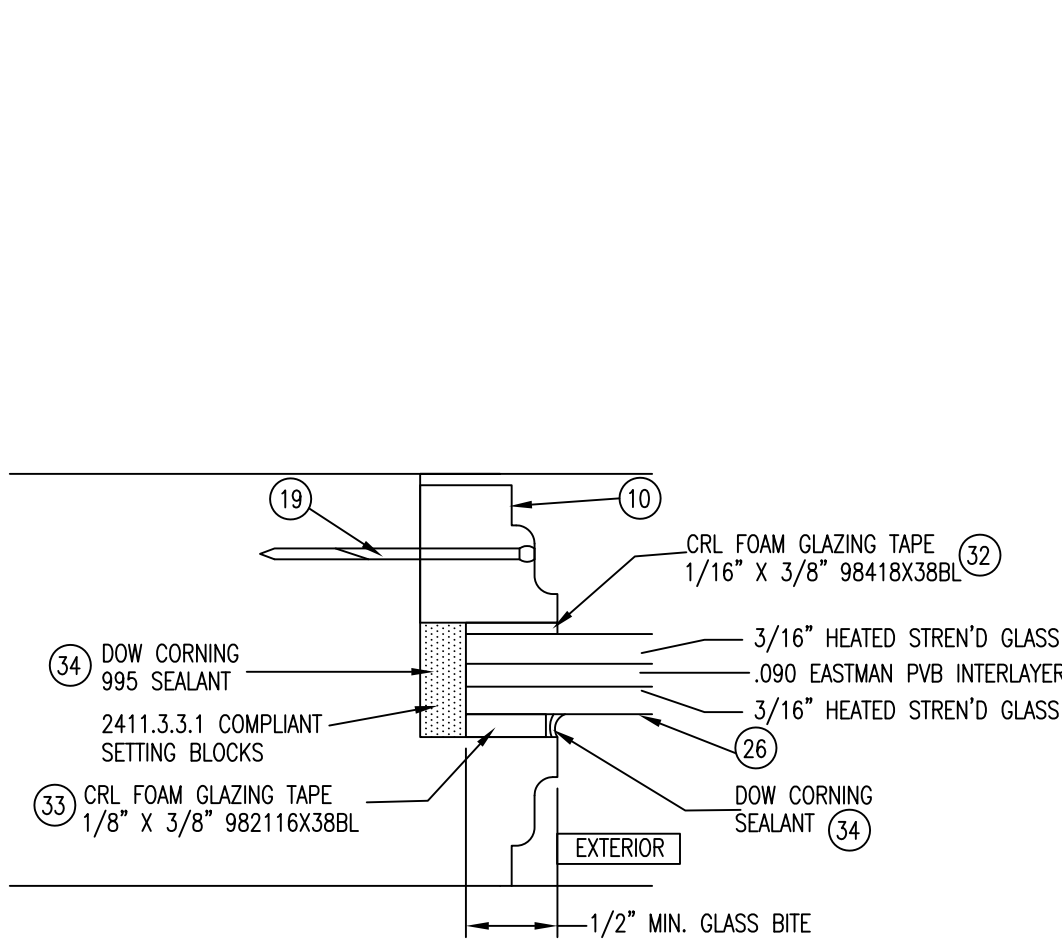
DRAWN BY: DATE
04/24/20

DRAWING NO.
FPA-AMER-DOOR

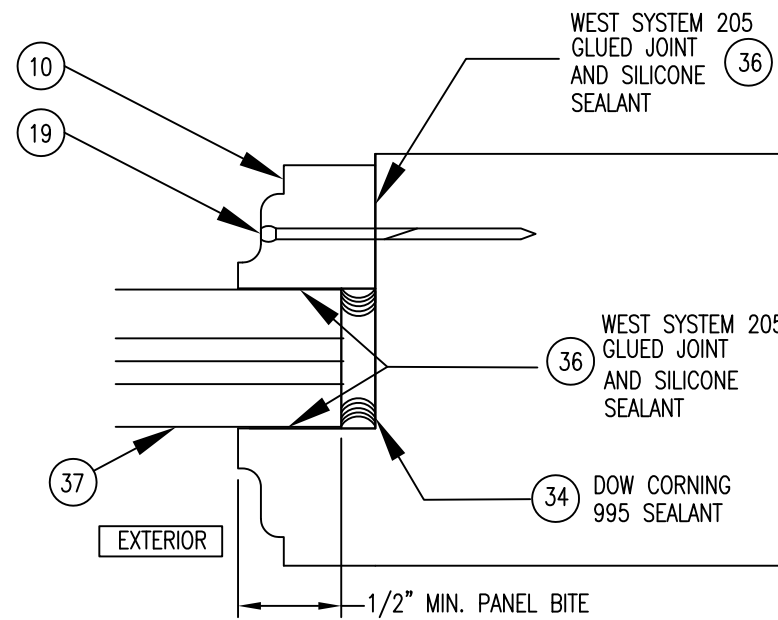
SHEET NO. 2



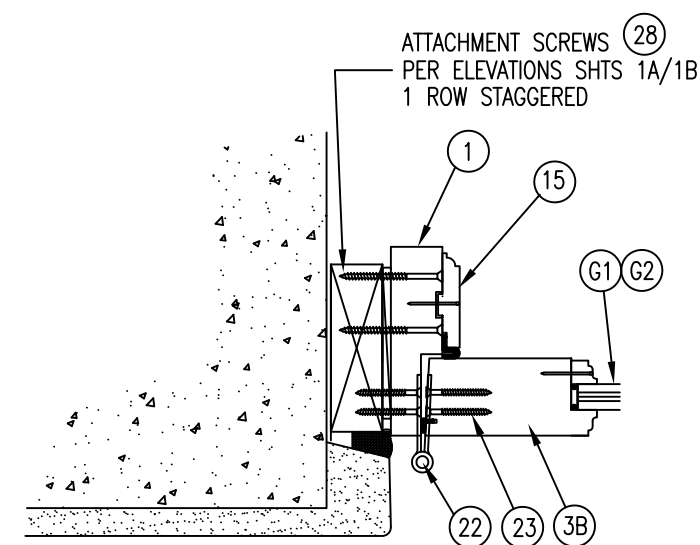
D PLAN SECTION
Scale: 1/2 FULL SIZE



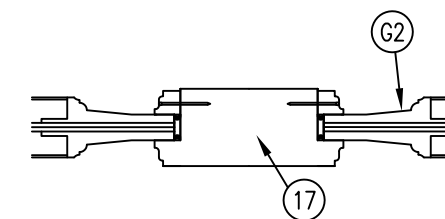
G1 GLAZING DETAIL
Scale: FULL SIZE



G2 PANEL EDGE DETAIL
Scale: FULL SIZE



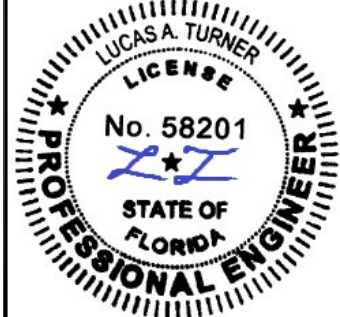
E HINGE JAMB
Scale: 1/2 FULL SIZE



F VERTICAL MID RAIL
Scale: 1/2 FULL SIZE
APPLICABLE TO PANEL DOORS ONLY



BORGZINNER, INC
1160 W 13TH ST., UNIT 10
RIVIERA BEACH, FL 33404
PH. (561) 848-2538 FAX (561) 844-0011
<http://www.borgzinner.com>



8/13/2020
LUCAS TURNER

AMERICAN DOOR OUTSWING
WOOD ENTRANCE DOOR

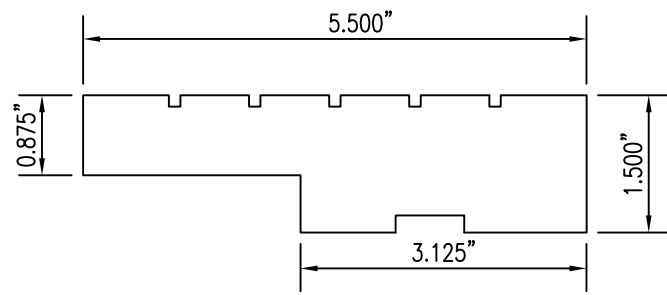
LUCAS A. TURNER, FL PE # 58201
TURNER ENGINEERING & CONSULTING, INC.
(FBPE COA # 29779)
2428 OLD NATCHEZ TRC TRL
CAMDEN, TN 38320 PH. 941-380-1574

| REVISIONS | ISSUE NOTES | |
|-----------|-------------|--|
| | DATE | |
| ISSUE | | |
| | | |
| | | |
| | | |
| | | |

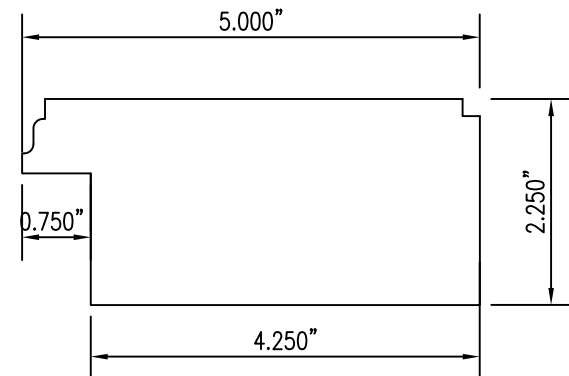
DRAWN BY: DATE
04/24/20

DRAWING NO.
FPA-AMER-DOOR

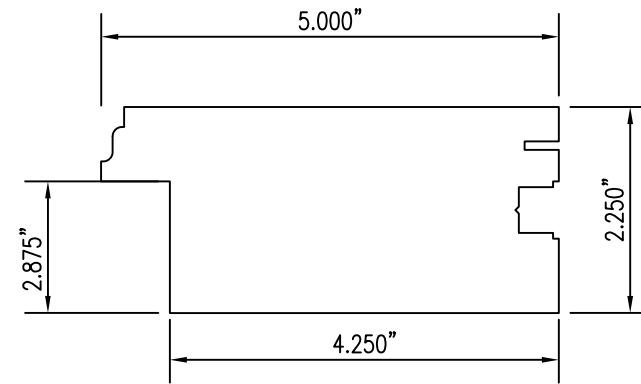
SHEET NO. 3



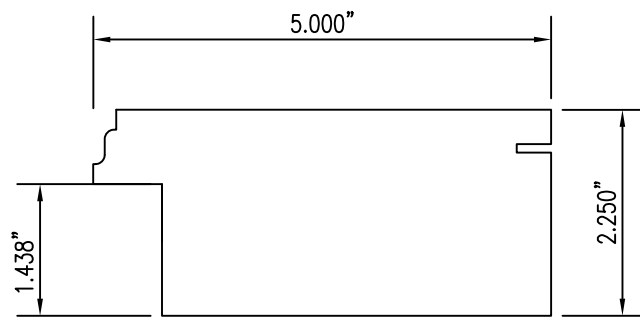
1 HEAD & JAMBS
Scale: 1/2 FULL SIZE



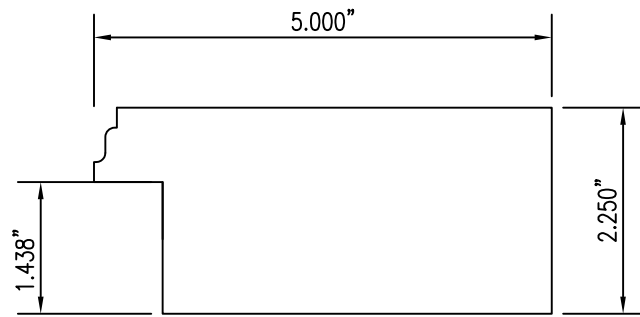
2 STILE AND RAILS - FIXED
Scale: 1/2 FULL SIZE



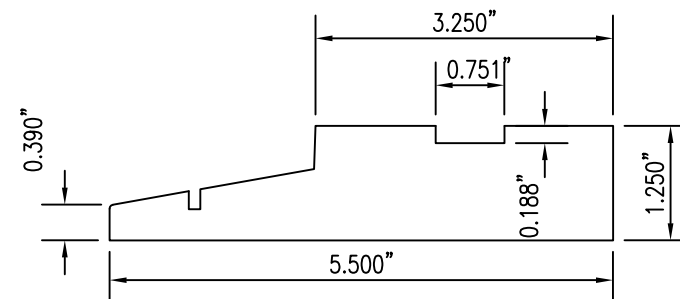
3A MEETING STILE - ACTIVE
Scale: 1/2 FULL SIZE



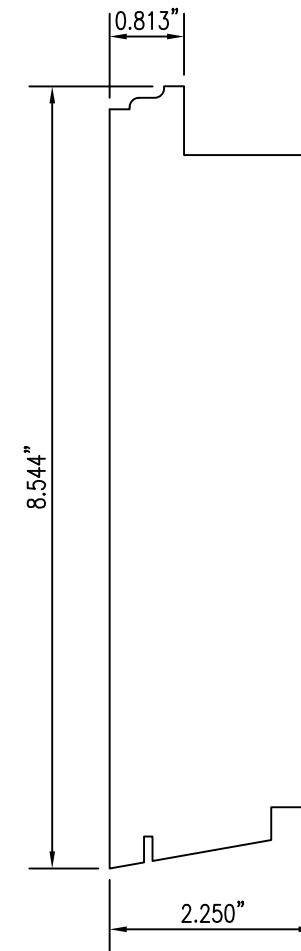
3B HIINGE STILE & TOP RAIL
Scale: 1/2 FULL SIZE



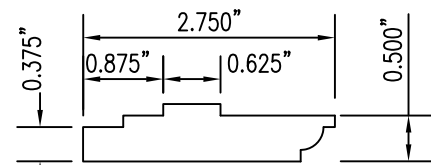
3C MEETING STILE - INACTIVE
Scale: 1/2 FULL SIZE



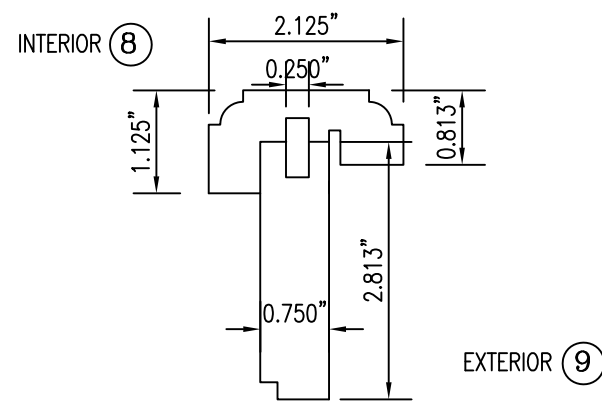
4 JAMB SILL
Scale: 1/2 FULL SIZE



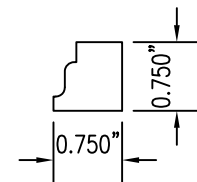
7 BOTTOM RAIL
Scale: 1/2 FULL SIZE



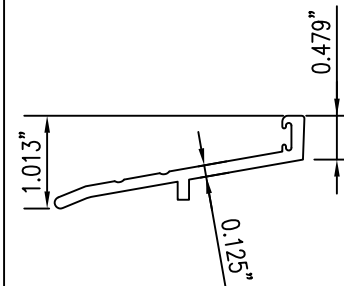
5 INTERIOR TRIM
Scale: 1/2 FULL SIZE



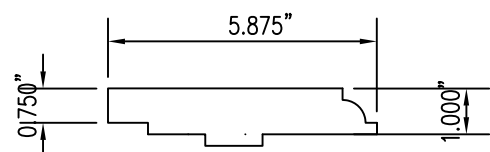
8-9 ASTRAGAL
Scale: 1/2 FULL SIZE



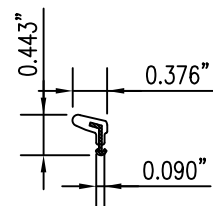
10 GLAZING STOP
Scale: 1/2 FULL SIZE



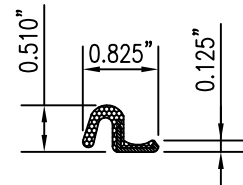
11 THRESHOLD
Scale: 1/2 FULL SIZE



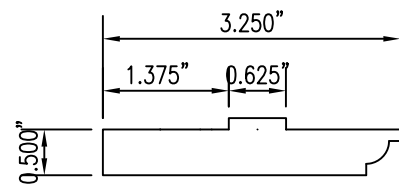
6 INTERIOR SILL TRIM
Scale: 1/2 FULL SIZE



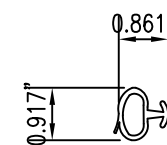
12 COMP. SEAL @ JAMBS
Scale: 1/2 FULL SIZE



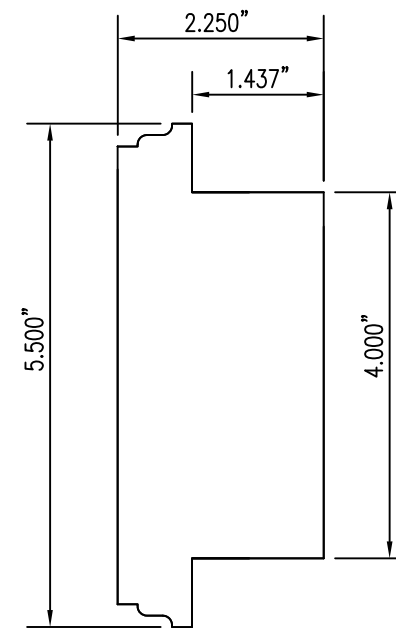
13 WEATHER SEAL
Scale: 1/2 FULL SIZE



16 INTERIOR SILL TRIM - FIXED
Scale: 1/2 FULL SIZE



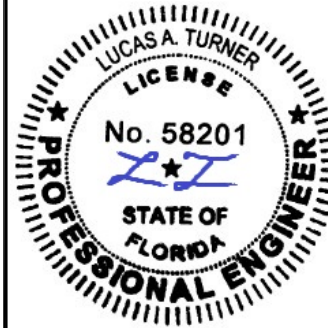
29 SILL COMP. SEAL
Scale: 1/2 FULL SIZE



17 MID RAILS
Scale: 1/2 FULL SIZE



BORGZINNER, INC
1160 W 13TH ST, UNIT 10
RIVIERA BEACH, FL 33404
PH. (561) 848-2538 FAX (561) 844-0011
http://www.borgzinner.com



8/13/2020
LUCAS TURNER

AMERICAN DOOR OUTSWING
WOOD ENTRANCE DOOR

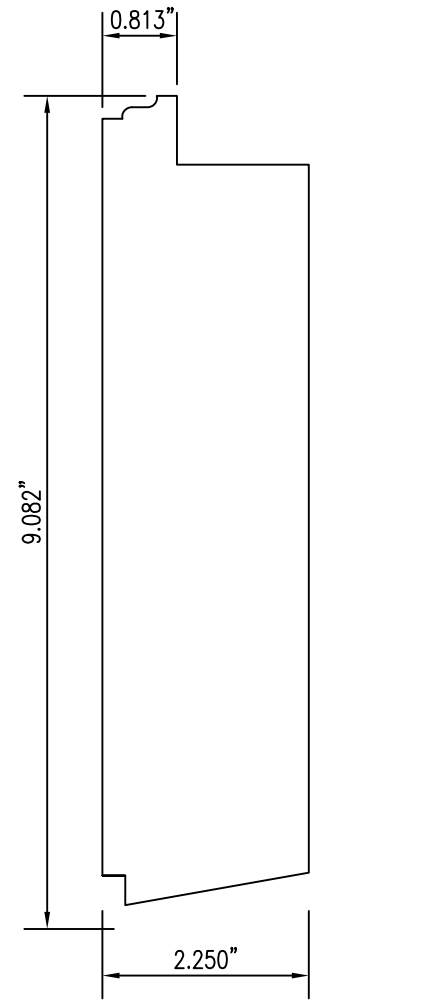
LUCAS A. TURNER, FL PE # 58201
TURNER ENGINEERING & CONSULTING, INC.
(FBPE COA # 29779)
2428 OLD NATCHEZ TRC TRL
CAMDEN, TN 38320 PH. 941-380-1574

| REVISIONS | ISSUE | DATE | ISSUE NOTES |
|-----------|-------|------|-------------|
| | | | |
| | | | |
| | | | |
| | | | |

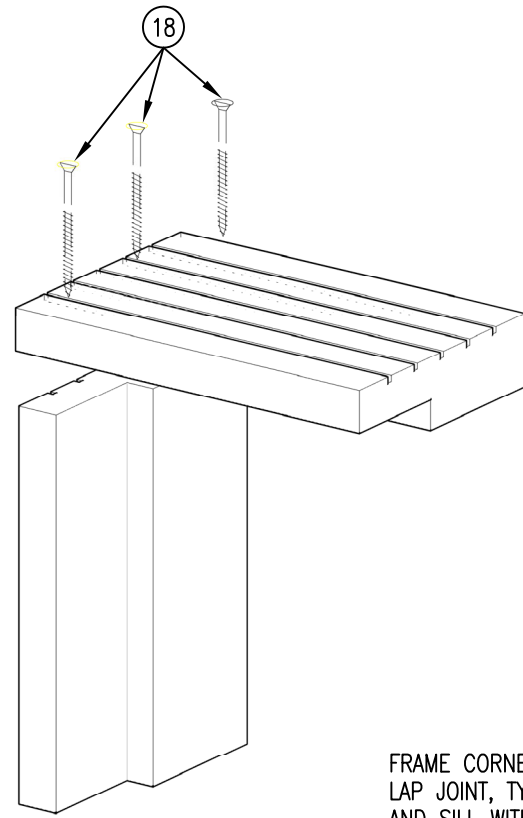
DRAWN BY: DATE
04/24/20

DRAWING NO.
FPA-AMER-DOOR

SHEET NO. 4

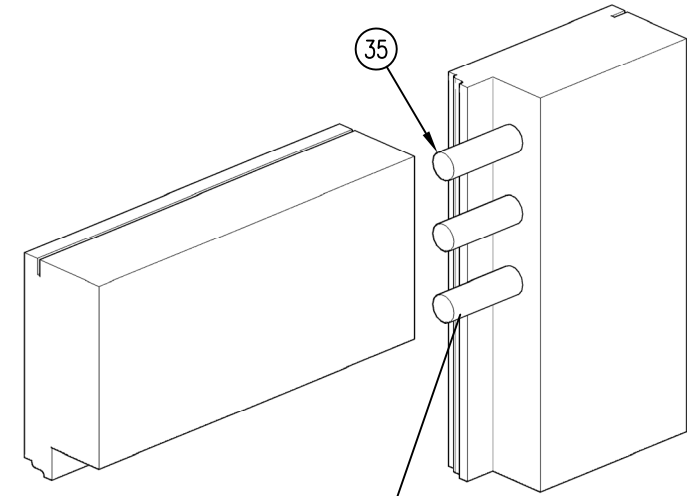


14 **BOTTOM RAIL - FIXED**
Scale: 1/2 FULL SIZE



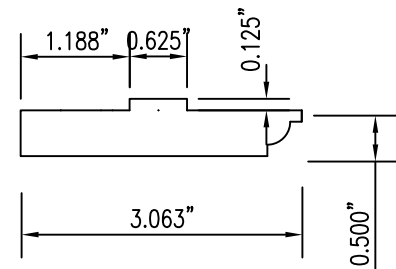
FRAME CORNERS HAVE HALF LAP JOINT, TYPICAL AT HEAD AND SILL WITH (3) # 10 X 3" ST. STL SCREWS AND GLUED WITH WEST SYSTEMS 205 GLUE

A **FRAME CORNER JONT**

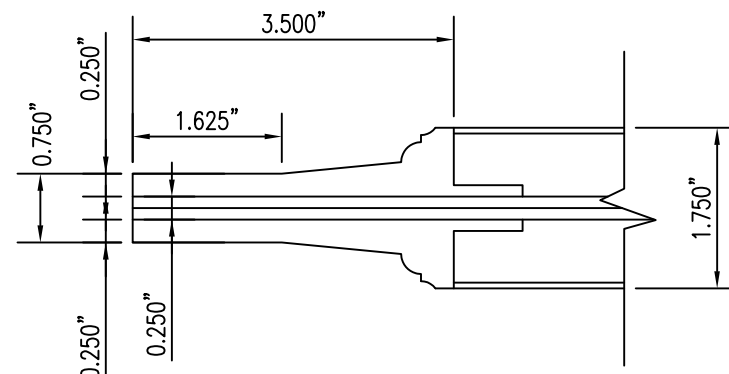


5/8" X 4" DOWEL PROJECT INTO STILE ENTER JOINT GLUE WITH WEST SYSTEMS 205 GLUE

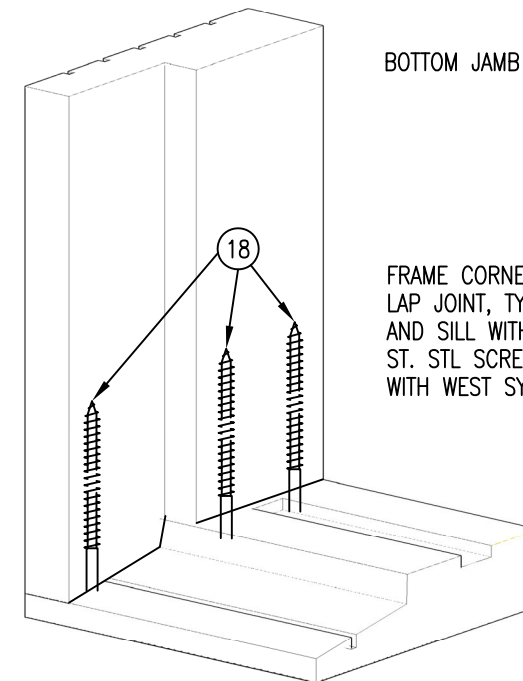
B **LEAF CORNER JONT**



15 **INTERIOR TRIM - FIXED**
Scale: 1/2 FULL SIZE



37 **RAISED PANEL**
Scale: 1/2 FULL SIZE

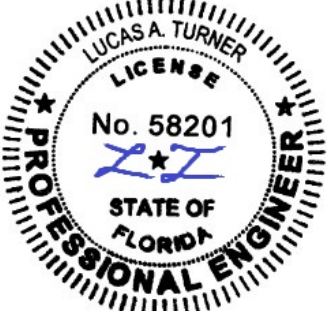


FRAME CORNERS HAVE HALF LAP JOINT, TYPICAL AT HEAD AND SILL WITH (3) # 10 X 3" ST. STL SCREWS AND GLUED WITH WEST SYSTEMS 205 GLUE

C **FRAME CORNER JONT**



BORGZINNER, INC
1160 W 13TH ST. UNIT 10
RIVIERA BEACH, FL 33404
PH. (561) 848-2538 FAX (561) 844-0011
<http://www.borgzinner.com>



8/13/2020
LUCAS TURNER

AMERICAN DOOR OUTSWING
WOOD ENTRANCE DOOR

LUCAS A. TURNER, FL PE # 58201
TURNER ENGINEERING & CONSULTING, INC.
(FBPE COA # 29779)
2428 OLD NATCHEZ TRC TRL, PH. 941-380-1574
CAMDEN, TN 38320

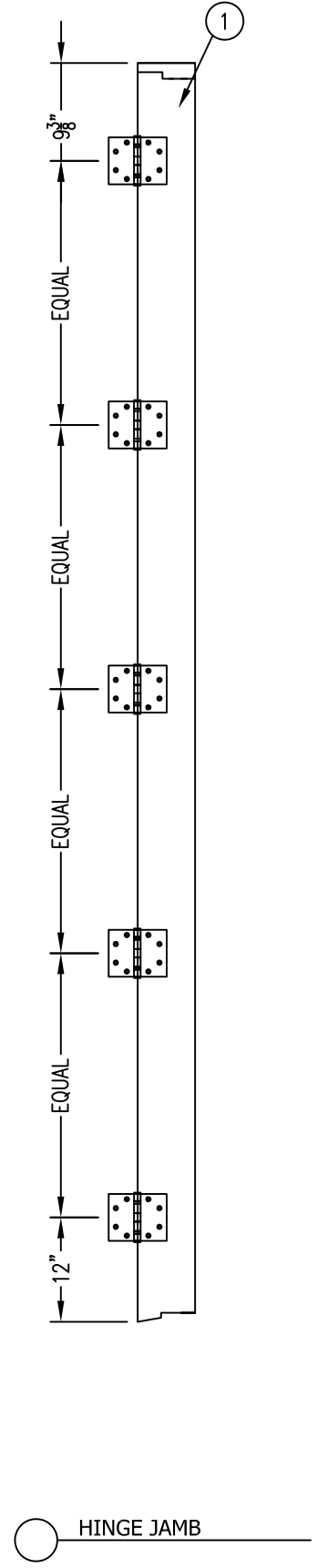
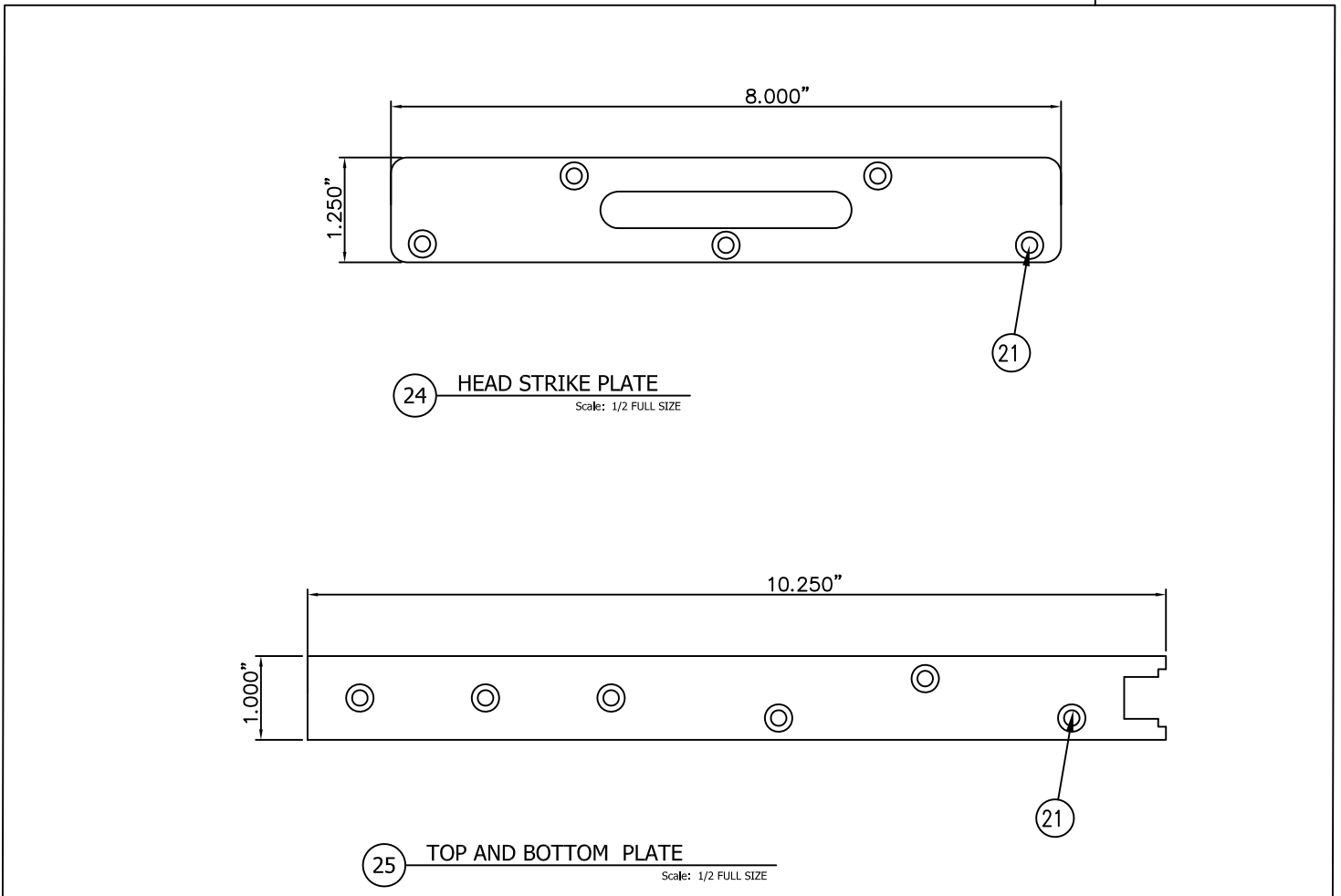
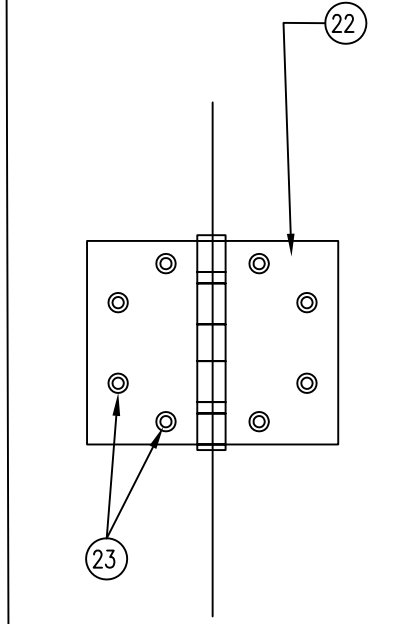
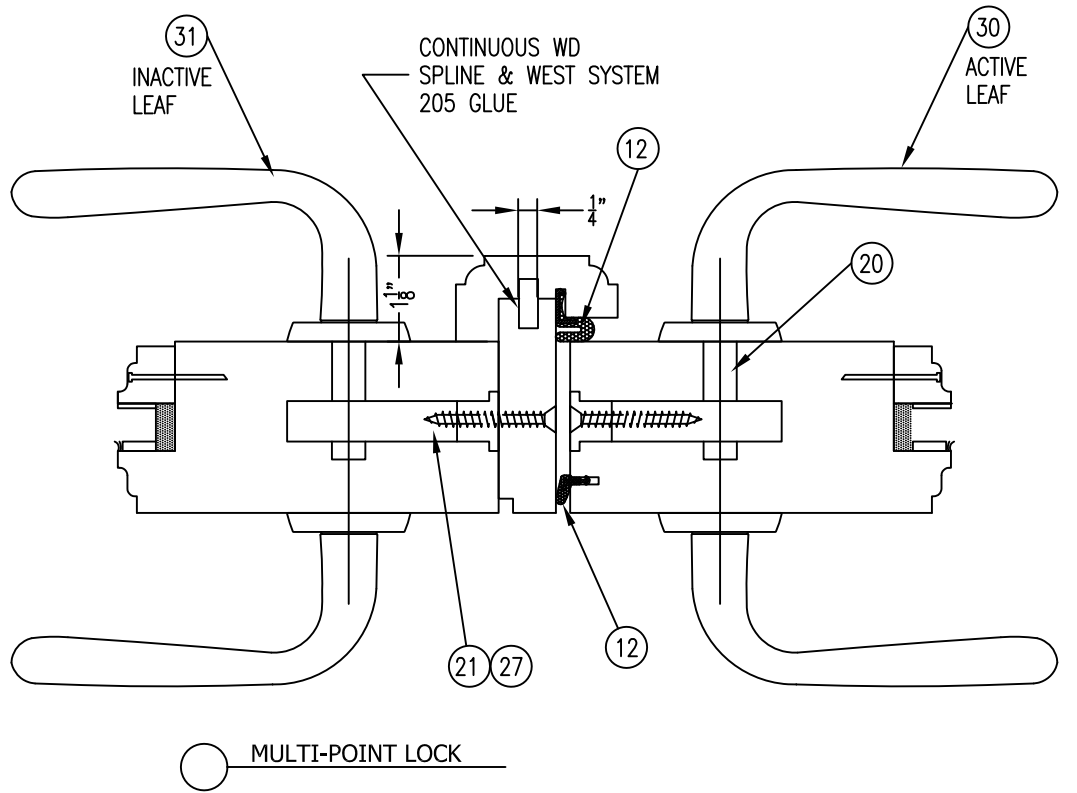
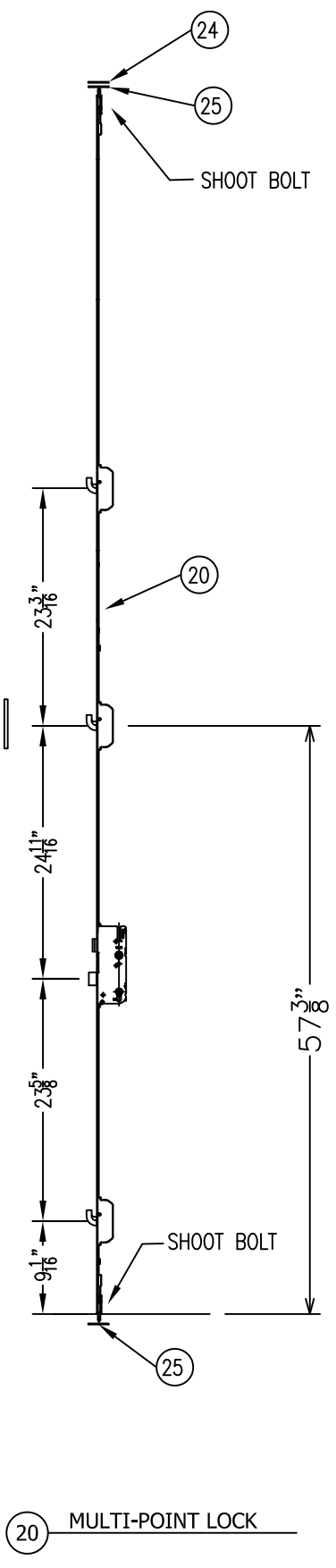
| REVISIONS | ISSUE | DATE | ISSUE NOTES |
|-----------|-------|------|-------------|
| | | | |
| | | | |
| | | | |
| | | | |

DRAWN BY: DATE
04/24/20

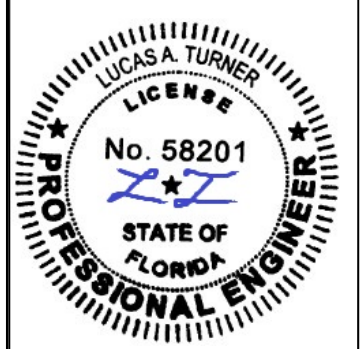
DRAWING NO.
FPA-AMER-DOOR

SHEET NO. 5

STRIKE PLATES ON PASSIVE DOOR LEAF ARE LOCATED AT CENTER OF EACH RHINO HOOK



BORGZINNER, INC
 1160 W 13TH ST, UNIT 10
 RIVIERA BEACH, FL 33404
 PH. (561) 848-2538 FAX (561) 844-0011
<http://www.borgzinner.com>



8/13/2020
 LUCAS TURNER

AMERICAN DOOR OUTSWING
 WOOD ENTRANCE DOOR

LUCAS A. TURNER, FL PE # 58201
 TURNER ENGINEERING & CONSULTING, INC.
 (FBPE COA # 29779)
 2428 OLD NATCHEZ TRC TRL.
 CAMDEN, TN 38320 PH. 941-380-1574

| ISSUE | DATE | ISSUE NOTES |
|-------|------|-------------|
| | | |
| | | |
| | | |
| | | |
| | | |
| | | |

| | |
|-----------|----------|
| DRAWN BY: | DATE |
| | 04/24/20 |

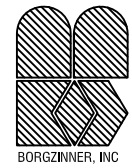
DRAWING NO.
 FPA-AMER-DOOR

SHEET NO. **6**

| NO. | ITEM DESCRIPTION | MATERIAL / MANUFACTURER |
|-----|--------------------------------------|---|
| 1 | HEAD & JAMBS | SAPELE WOOD |
| 2 | STILE AND RAILS, FIXED | SAPELE WOOD |
| 3A | MEETING STILE – ACTIVE | SAPELE WOOD |
| 3B | HINGE STILE AND TOP RAIL | SAPELE WOOD |
| 3C | MEETING STILE – PASSIVE | SAPELE WOOD |
| 4 | SILL | SAPELE WOOD |
| 5 | INTERIOR TRIM | SAPELE WOOD |
| 6 | INTERIOR SILL TRIM | SAPELE WOOD |
| 7 | BOTTOM RAIL | SAPELE WOOD |
| 8 | ASTRAGAL – INTERIOR | SAPELE WOOD |
| 9 | ASTRAGAL – EXTERIOR | SAPELE WOOD |
| 10 | GLAZING STOP | SAPELE WOOD |
| 11 | THRESHOLD | BRONZE |
| 12 | COMPRESSION SEAL AT JAMBS | SCHLEGEL– Q–LON QEZD 320 |
| 13 | WEATHER SEAL | SCHLEGEL– Q–LON QEZD 650 |
| 14 | BOTTOM RAIL – FIXED | SAPELE WOOD |
| 15 | FIXED INTERIOR TRIM/STOP | SAPELE WOOD |
| 16 | FIXED INTERIOR TRIM/BOTTOM STOP | SAPELE WOOD |
| 17 | MIDDLE RAILS | SAPELE WOOD |
| 18 | #10 X 3" LONG ST, STL WOOD SCREWS | INSTALLATION FASTENERS, SEE ELEVATIONS SHTS 1A & 1B |
| 19 | 16GA X 1 1/2" LONG ST. STL FIN NAILS | STARTING 4" FROM CORNERS THEN 9" MAX O/C |
| 20 | GU – MULTI–POINT LOCKING SYSTEM | STAINLESS STEEL |

| NO. | ITEM DESCRIPTION | MATERIAL / MANUFACTURER |
|-----|---|--|
| 21 | # 8 X 1 1/2" ST. STL FOR LOCKING SYSTEM | STAINLESS STEEL |
| 22 | 4 1/2" X 4 1/2" BUTT HINGES | STAINLESS STEEL |
| 23 | # 10 X 1 1/2" ST. STL HINGE ATTACHMENT SCREWS | STAINLESS STEEL |
| 24 | BORGZINNER TOP PLATE – BRONZE | ATTACHED WITH (5) #8 X 1 1/2" STL SCREWS |
| 25 | BORGZINNER TOP & BOTTOM PLATE – BRONZE | ATTACHED WITH (6) #8 X 1 1/2" STL SCREWS |
| 26 | GLASS | 7/16" LAMINATED, (3/16" HS–0.090" SAFLEX–3/16" HS) |
| 27 | # 8 X 1 1/2" ST. STL (ASTRAGAL) WOOD SCREWS | STARTING 6" FROM CORNERS THEN 10" MAX O/C |
| 28 | FRAME ANCHOR ATTACHMENT | WOOD BUCK : #10 X 3" ST. STL SCREWS |
| 29 | COMPRESSION SEAL AT THRESHOLD | SCHLEGEL |
| 30 | GU TRIM KIT CAPRI –HB | ON ACTIVE DOOR LEAF |
| 31 | GU TRIM KIT SEMI ACTIVE CAPRI | ON INACTIVE DOOR LEAF |
| 32 | 1/16" X 3/8" GLAZING TAPE | CRL # 98418X38BL FOAM TAPE |
| 33 | 1/8" X 3/8" GLAZING TAPE | CRL # 982116X38BL FOAM TAPE |
| 34 | PERIMETER SEALANT AT GLASS | DOW CORNING 995 SEALANT |
| 35 | 5/8" DIA X 4" LONG WOOD DOWELS | JAMB UPPER CORNER JOINT CONNECTORS |
| 36 | WEST SYSTEM 205 GLUE | AT ALL GLUED JOINTS |
| 37 | RAISED PANELS | SAPELE WOOD WITH MDF CORE |

MANUFACTURER



BORGZINNER, INC

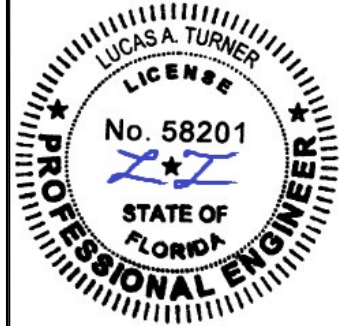
1160 W 13TH ST, UNIT 10

RIVIERA BEACH, FL 33404

PH. (561) 848-2538

FAX (561) 844-0011

http://www.borgzinner.com



8/13/2020
LUCAS TURNER

AMERICAN DOOR OUTSWING
WOOD ENTRANCE DOOR

LUCAS A. TURNER, FL PE # 58201
TURNER ENGINEERING & CONSULTING, INC.
(FBPE COA # 29779)
2428 OLD NATCHEZ TRC TRL,
CAMDEN, TN 38320 PH. 941-380-1574

| REVISIONS | ISSUE | DATE | ISSUE NOTES |
|-----------|-------|------|-------------|
| | | | |

| | |
|-----------|----------|
| DRAWN BY: | DATE |
| | 04/24/20 |

DRAWING NO.
FPA-AMER-DOOR

SHEET NO. 7