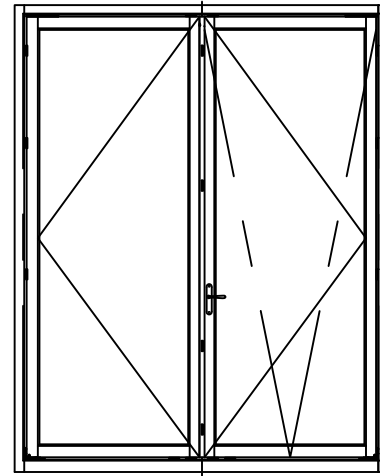


BORGZINNER EURO INSWING WOOD TILT AND TURN WINDOWS

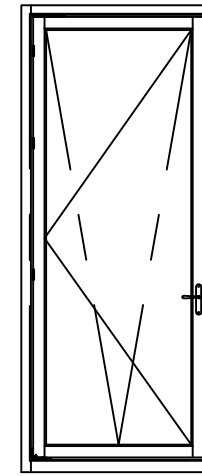
LARGE AND SMALL MISSILE IMPACT RESISTANT

DOUBLE AND SINGLE TILT AND TURN SASH

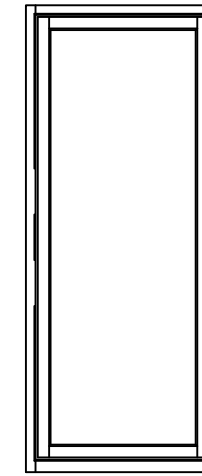
DESIGN PRESSURE RATING = + 70.0 PSF
- 70.0 PSF



DOUBLE TILT & TURN SASH



SINGLE TILT & TURN SASH



SINGLE FIXED SASH

GENERAL NOTES:

1. THIS PRODUCT, FABRICATED AND ANCHORED AS DETAILED IN THIS DRAWING, IS LARGE MISSILE IMPACT RESISTANT AND DOES NOT REQUIRE THE USE OF SHUTTERS.
2. THIS PRODUCT HAS BEEN TESTED TO TAS 201-94, TAS 202-94, AND TAS 203-94, AND MEETS THE REQUIREMENTS OF THE FLORIDA BUILDING CODE, 6TH EDITION (2017), INCLUDING THE HIGH VELOCITY HURRICANE ZONE.
3. ALLOWABLE CONFIGURATIONS: O (SINGLE FIXED), X (SINGLE VENT), OR XX (VENT-VENT)
4. THE DESIGN PRESSURE RATINGS IN THIS DRAWING ARE AS LIMITED BY ASTM E-1300 04E01/09 GLASS TABLES, AND TESTED PRESSURES.
5. THE 4/3 ALLOWABLE STRESS INCREASE HAS NOT BEEN USED IN THE ANCHOR ANALYSIS FOR THIS SYSTEM. THE 1.6 Cd FACTOR WAS USED IN THE ANALYSIS OF ANCHORAGE INTO WOOD SUBSTRATE.
6. INSTALLATION OF WOOD BUCKS TO THE SUBSTRATE TO BE ENGINEERED BY OTHERS OR AS APPROVED BY THE AUTHORITY HAVING JURISDICTION. BUCKING, OPENINGS & BUCKING FASTENERS MUST BE PROPERLY DESIGN & INSTALLED TO TRANSFER WIND LOADS TO THE STRUCTURE. ALL DETAILS IN THIS DRAWING WHICH SHOW INSTALLATION TO WOOD BUCKS ALSO APPLY IF WOOD BUCKS ARE OPTIONALLY INSTALLED BY OTHERS OVER CONCRETE OR MASONRY SUBSTRATE.
7. DISSIMILAR MATERIALS THAT COME INTO CONTACT SHALL BE COATED OR OTHERWISE PROTECTED PER FBC TO PREVENT GALVANIC REACTIONS.
8. ALL HARDWARE & FASTENERS SHALL BE IN ACCORDANCE WITH THESE DRAWINGS & MAY NOT VARY UNLESS SPECIFICALLY MENTIONED ON THE DRAWINGS.
9. SPECIFIED EMBEDMENT TO BASE MATERIAL SHALL BE BEYOND WALL FINISH OR STUCCO.
10. SHIMS SHALL BE LOAD-BEARING (PLASTIC OR METALLIC) AND CAPABLE OF TRANSFERRING APPLIED LOADS FROM THE PRODUCTS TO THE OPENING SUBSTRATES. SHIM EACH ANCHOR LOCATION WHERE GAP GREATER THAN 1/16" EXISTS BETWEEN PRODUCT FRAME AND OPENING SUBSTRATE.
11. ALL BORGZINNER WOOD FRAMING TO BE SAPELLE WITH MIN. SPECIFIC GRAVITY OF 0.46

FRAME ANCHOR REQUIREMENT TABLE			
FRAME AND SILL SCREWS			
OPENING TYPE (SUBSTRATE)	INSTALLATION FASTENER TYPE	MINIMUM EMBEDMENT	MINIMUM EDGE DIST.
2X MIN. SOUTHERN PINE (G=0.55)	THROUGH ANCHOR PLATES, BOM ITEM 20. TWO #10 STAINLESS STEEL WOOD SCREWS INTO PRODUCT AT EACH PLATE, AND FOUR #10 STAINLESS STEEL WOOD SCREWS INTO WOOD BUCK AT EACH PLATE	1 1/4"	3/4"

CORNER CONSTRUCTION

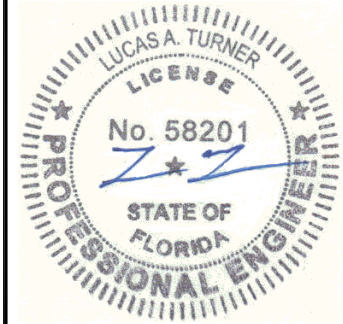
- FRAME: VERTICAL MEMBERS ARE MORTISED AND JOINED TO HORIZONTAL MEMBERS WITH AND HELD TOGETHER WITH WEST SYSTEM 205 GLUE
- SASH: CONSTRUCTED USING 3 FINGER JOINTS AND HELD TOGETHER WEST SYSTEM 205 GLUE

TABLE OF CONTENTS:

SHEET	DESCRIPTION
1	GEN. NOTES, ANCHOR TABLE
2	ELEVATIONS
3	MULTIPOINT LOCK LOC.
4-6	DETAILS/SECTIONS
7	PROFILE DRAWINGS, JOINERY
8	BILL OF MATERIALS



BORGZINNER, INC
1160 W 13TH ST., UNIT 10
RIVIERA BEACH, FL 33404
PH. (561) 848-2538 FAX (561) 844-0011
<http://www.borgzinner.com>



6/5/2020
LUCAS TURNER

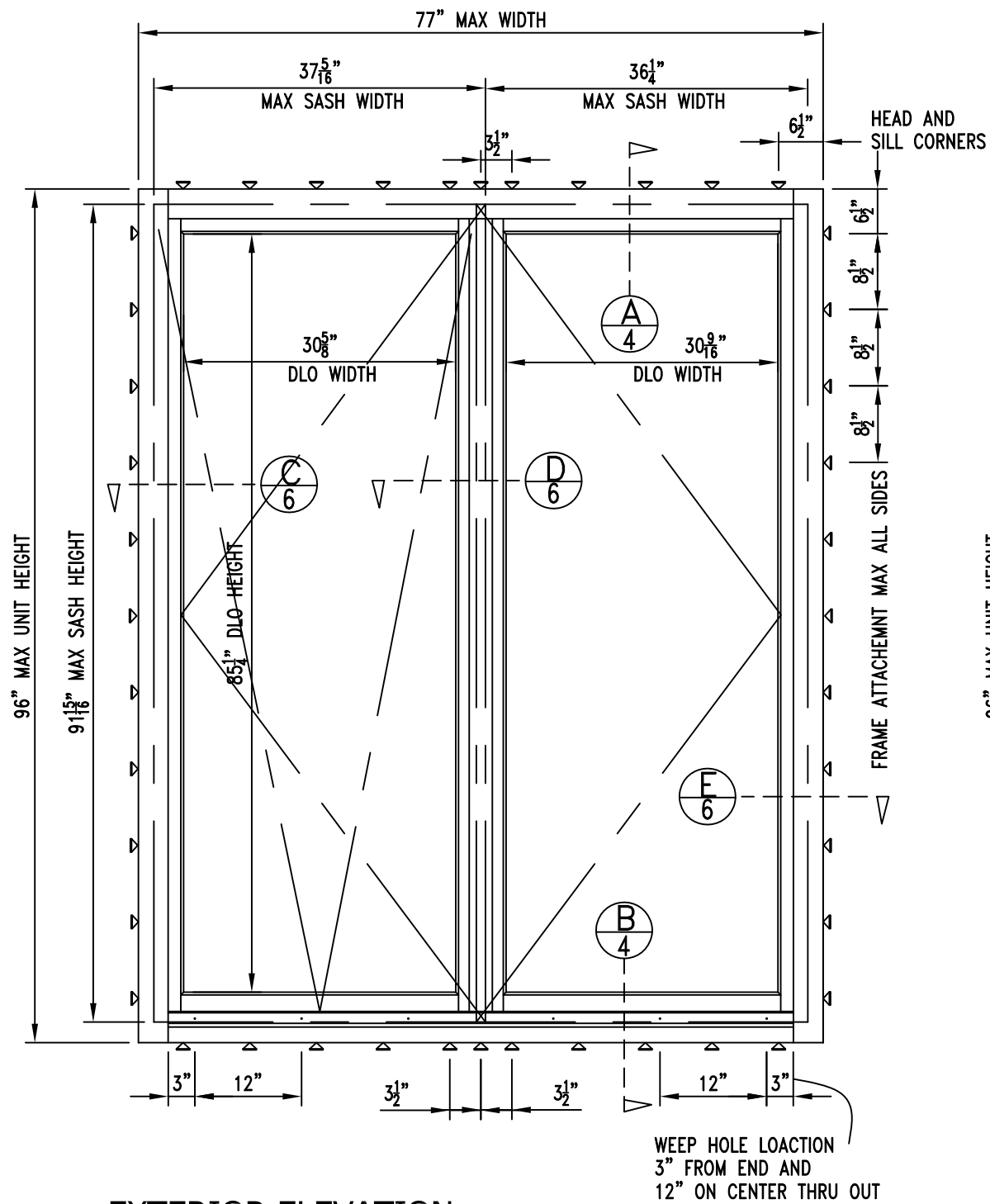
EURO INSWING WOOD TILT AND TURN WINDOWS

LUCAS A. TURNER, FL PE # 58201
TURNER ENGINEERING & CONSULTING, INC.
(FBPE COA # 29779)
2428 OLD MATCHEZ TRC TRL.
CAMDEN, TN 38320 PH. 941-380-1574

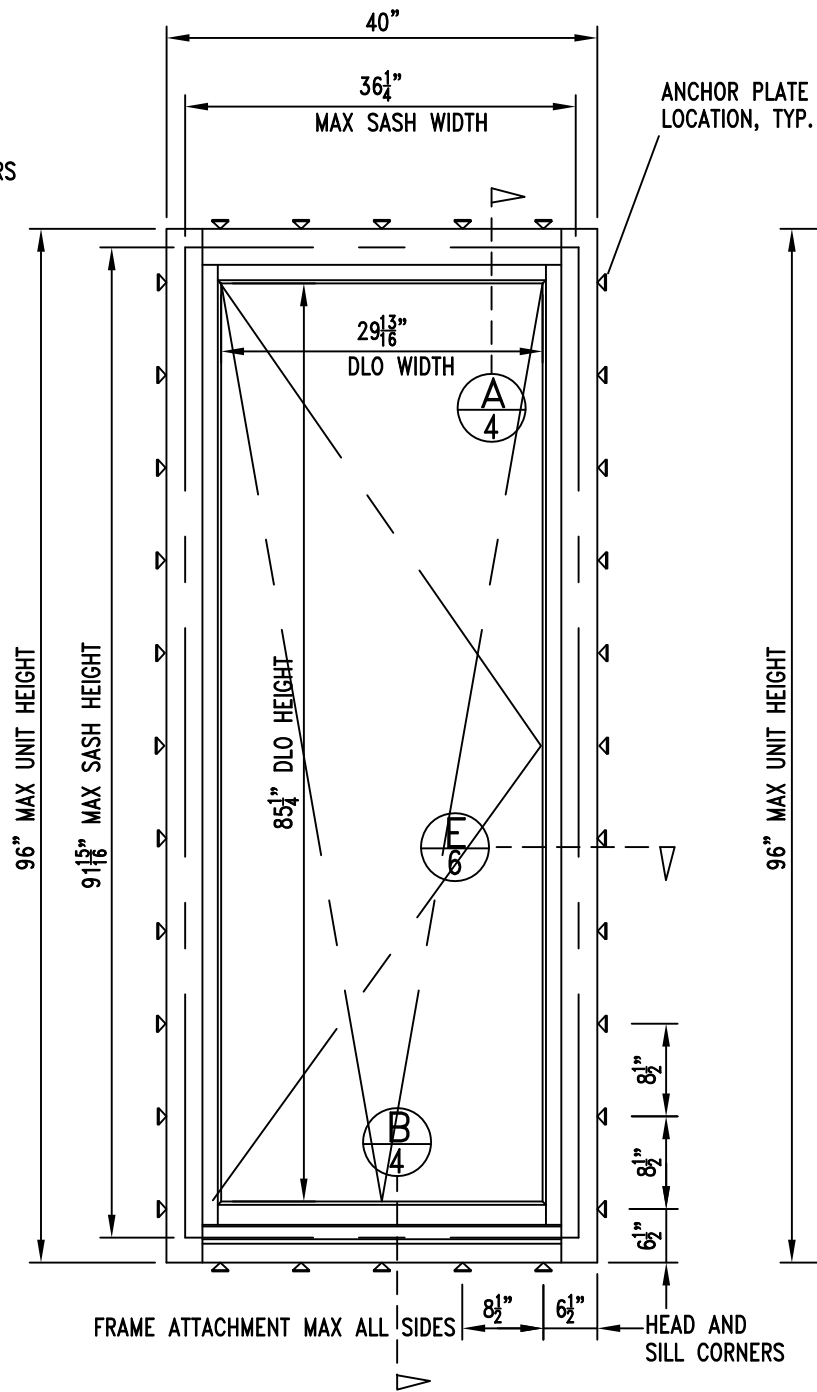
REVISIONS	ISSUE	DATE	ISSUE NOTES

DRAWN BY:	DATE
	05/22/20

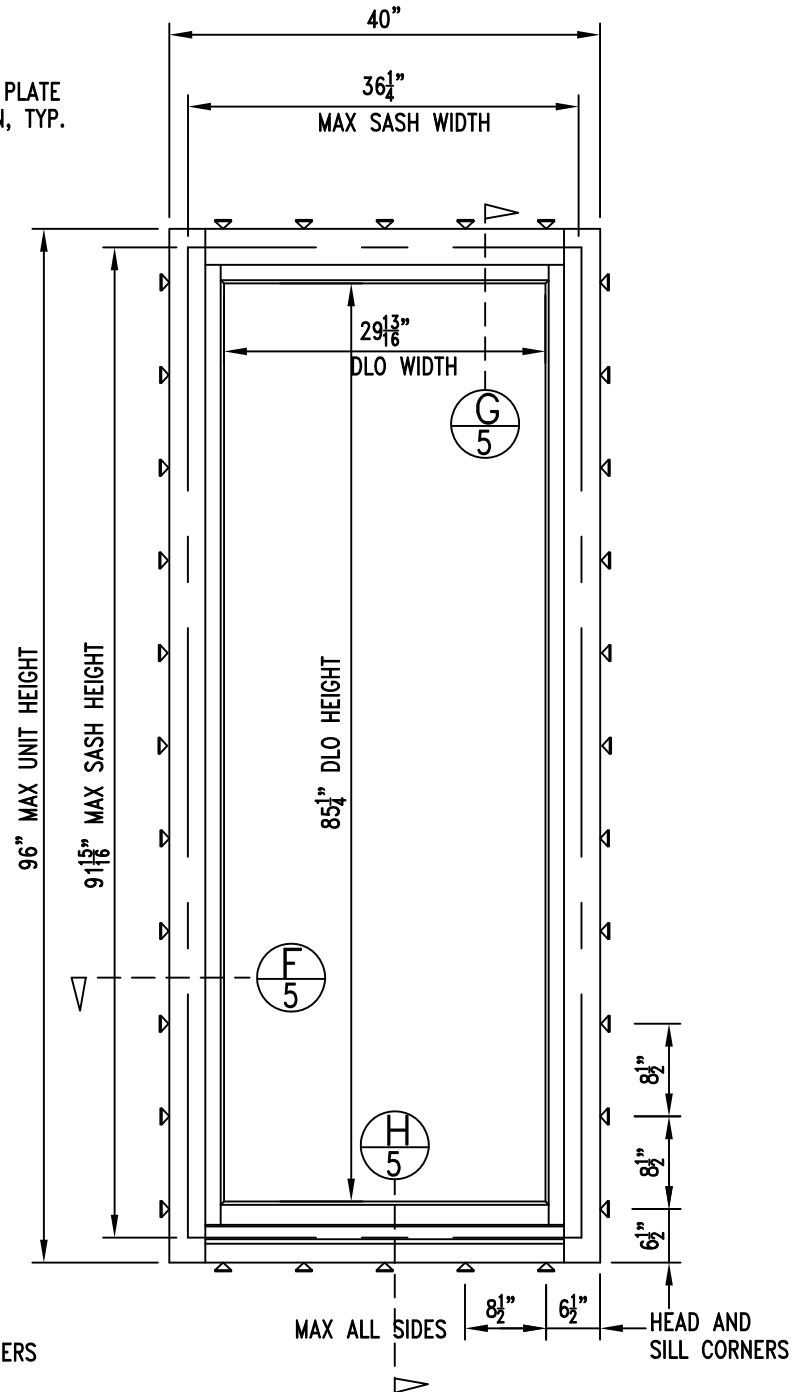
DRAWING NO.	FPA-EURO-TT
SHEET NO.	1 OF 8



EXTERIOR ELEVATION
DOUBLE TILT & TURN SASH



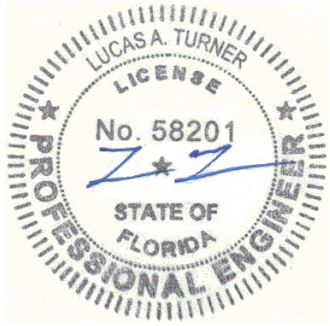
EXTERIOR ELEVATION
SINGLE TILT & TURN SASH



EXTERIOR ELEVATION
FIXED SASH



BORGZINNER, INC
1160 W 13TH ST, UNIT 10
RIVIERA BEACH, FL 33404
PH. (561) 848-2538 FAX (561) 844-0011
http://www.borgzinner.com



6/5/2020
LUCAS TURNER

EURO INSWING WOOD TILT AND
TURN WINDOWS

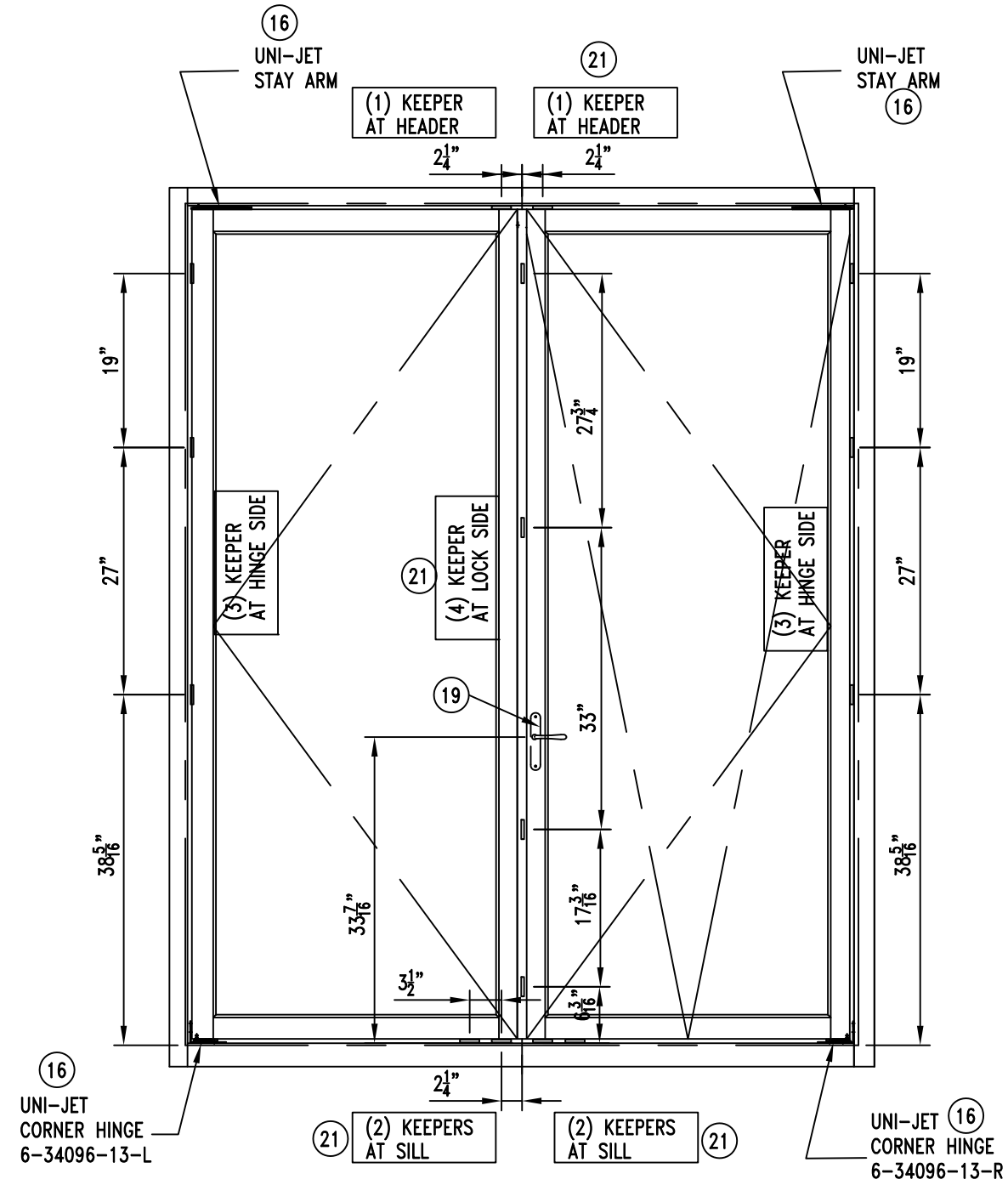
LUCAS A. TURNER, FL PE # 58201
TURNER ENGINEERING & CONSULTING, INC.
(FBPE COA # 29779)
2428 OLD NATCHEZ TRC TRL
CAMDEN, TN 38320 PH. 941-380-1574

REVISIONS	ISSUE	DATE	ISSUE NOTES

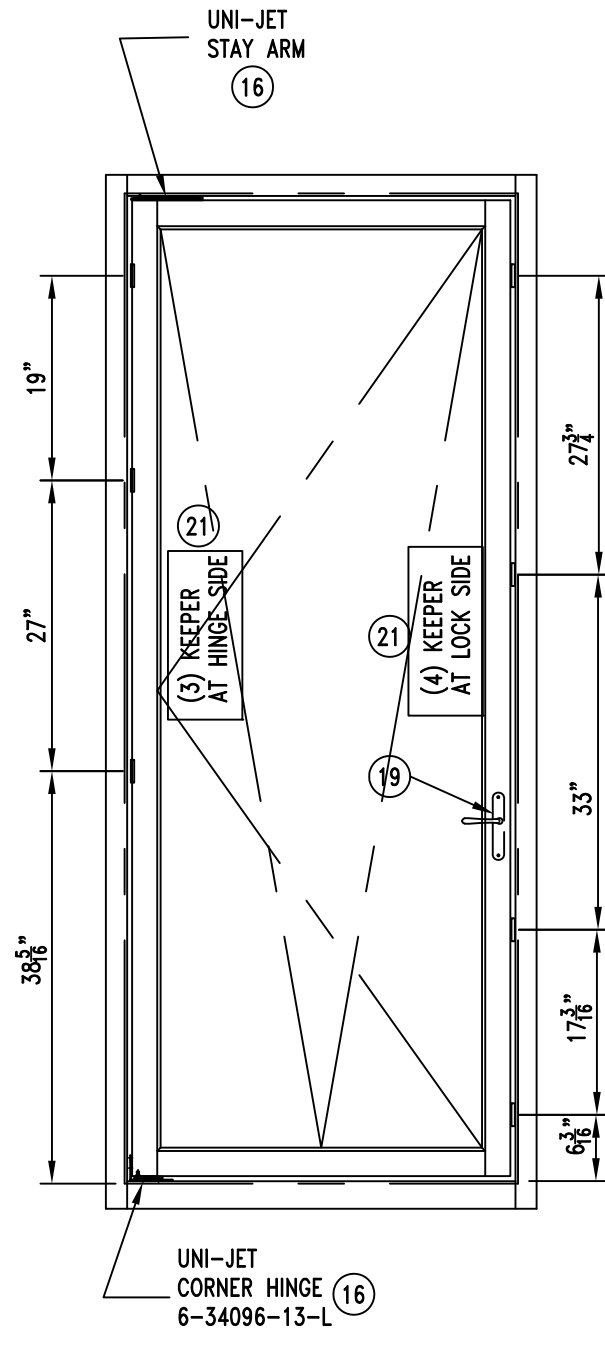
DRAWN BY: DATE
05/22/20

DRAWING NO.
FPA-EURO-TT

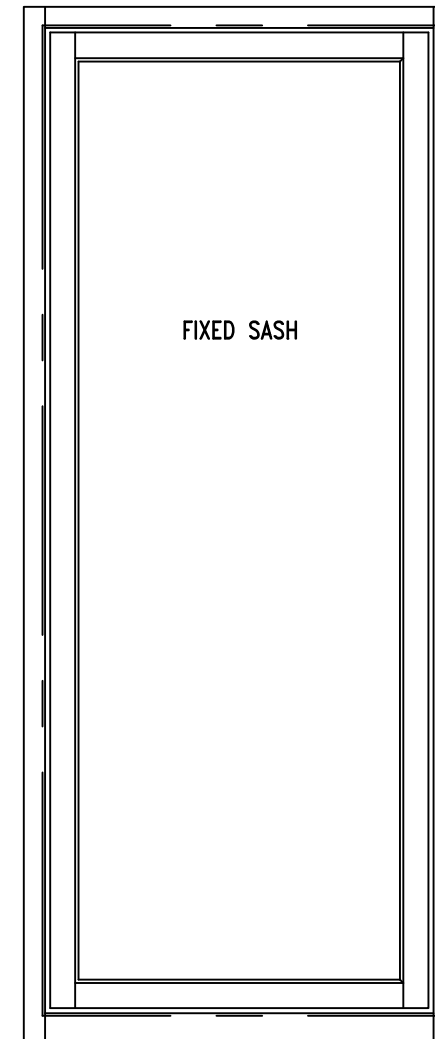
SHEET NO. 2 OF 8



INTERIOR ELEVATION
DOUBLE TILT & TURN SASH



INTERIOR ELEVATION
SINGLE TILT & TURN SASH

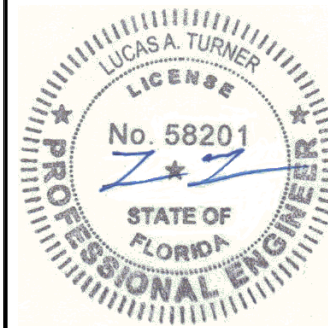


INTERIOR ELEVATION
FIXED SASH

MULTIPOINT LOCK KEEPER LOCATIONS



BORGZINNER, INC
1160 W 13TH ST, UNIT 10
RIVIERA BEACH, FL 33404
PH. (561) 848-2538 FAX (561) 844-0011
http://www.borgzinner.com



6/5/2020
LUCAS TURNER

EURO INSWING WOOD TILT AND
TURN WINDOWS

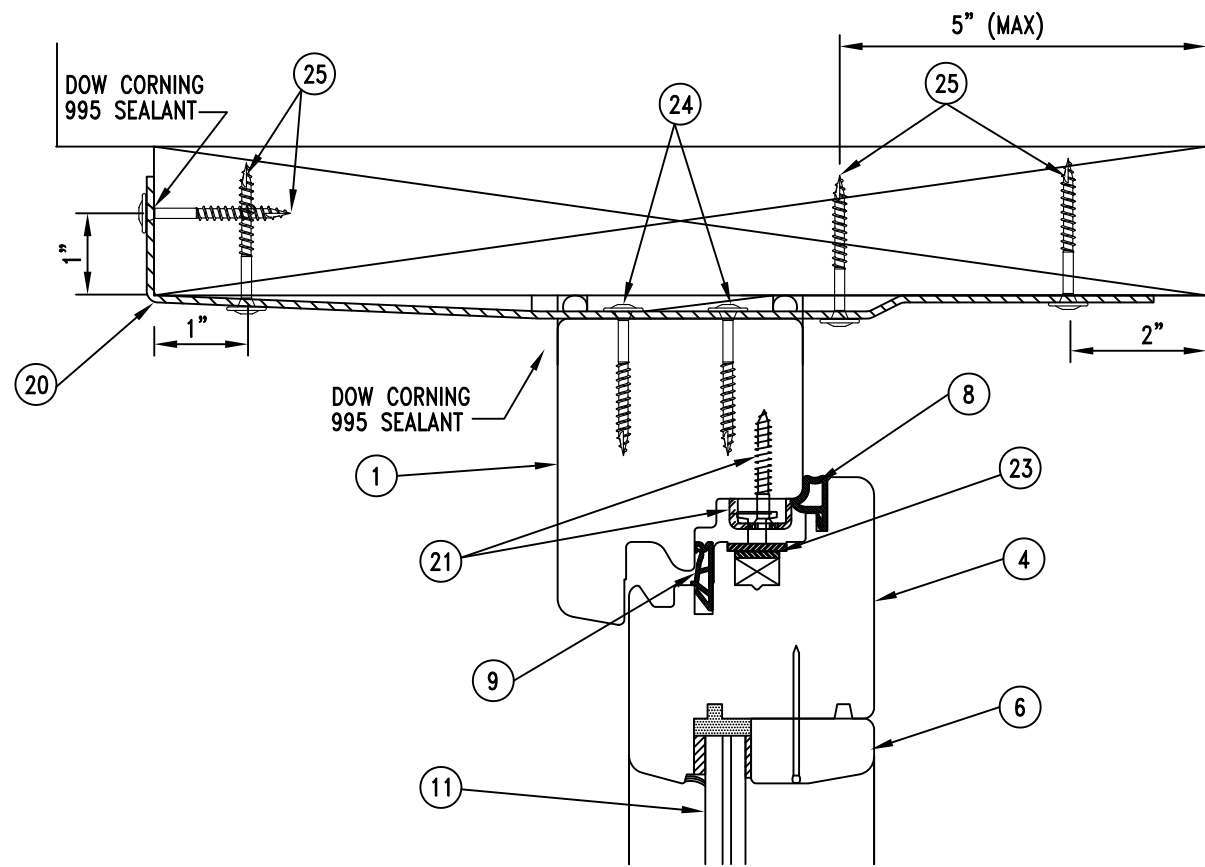
LUCAS A. TURNER, FL PE # 58201
TURNER ENGINEERING & CONSULTING, INC.
(FBPE COA # 29779)
2428 OLD NATCHEZ TRC TRL
CAMDEN, TN 38320 PH. 941-380-1574

REVISIONS	ISSUE	DATE	ISSUE NOTES

DRAWN BY: DATE
05/22/20

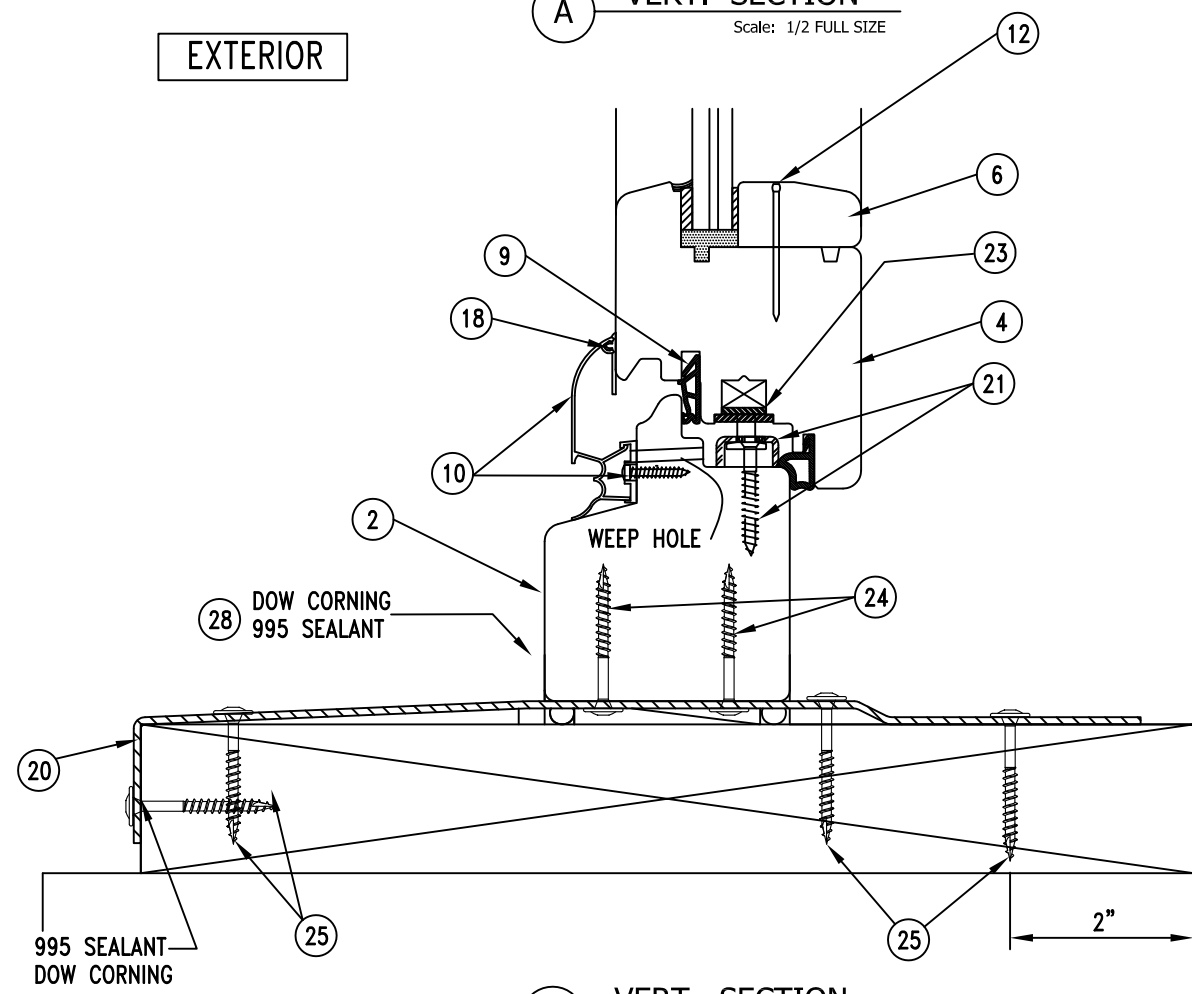
DRAWING NO.
FPA-EURO-TT

SHEET NO. 3 OF 8

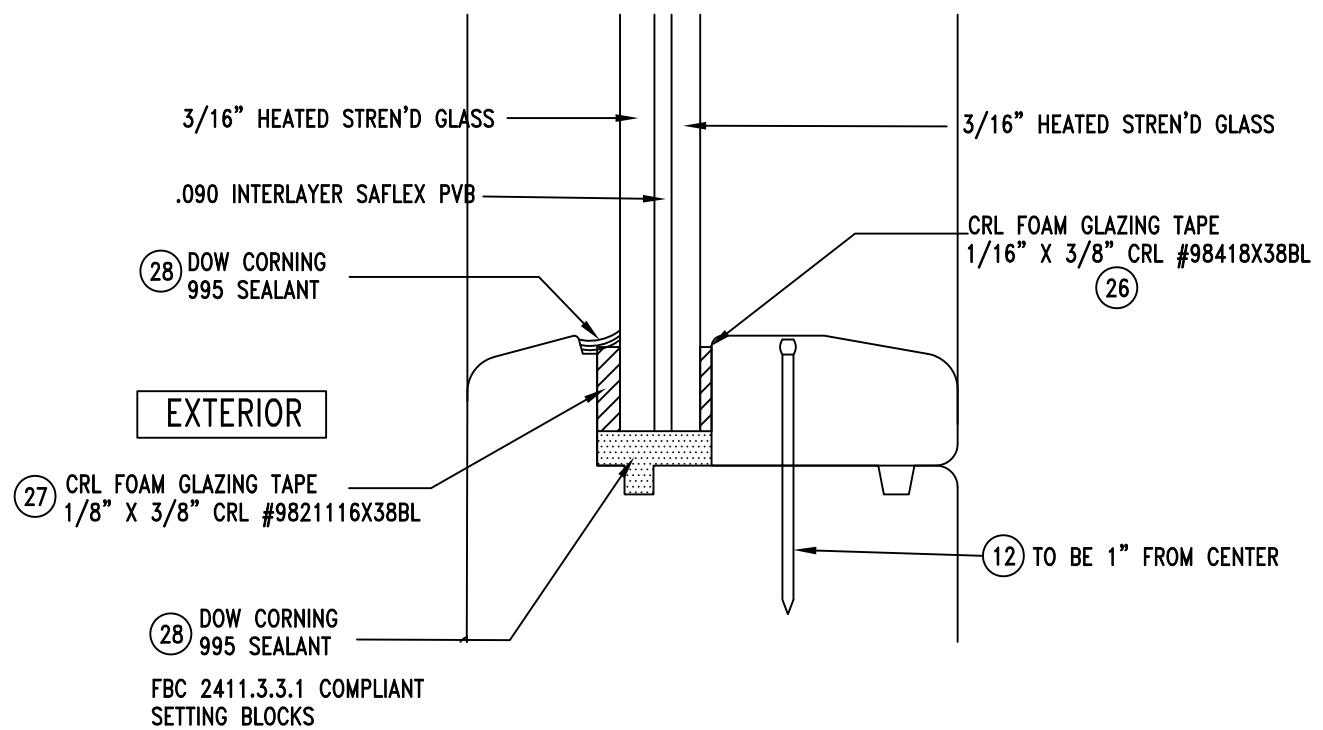


A VERT. SECTION
Scale: 1/2 FULL SIZE

EXTERIOR



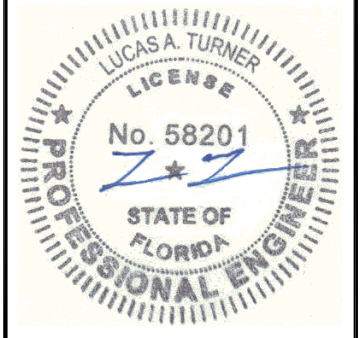
B VERT. SECTION
Scale: 1/2 FULL SIZE



1 GLAZING DETAIL
Scale: FULL SIZE



BORGZINNER, INC.
1160 W 13TH ST., UNIT 10
RIVIERA BEACH, FL 33404
PH. (561) 848-2538 FAX (561) 844-0011
http://www.borgzinner.com



6/5/2020
LUCAS TURNER

EURO INSWING WOOD TILT AND TURN WINDOWS

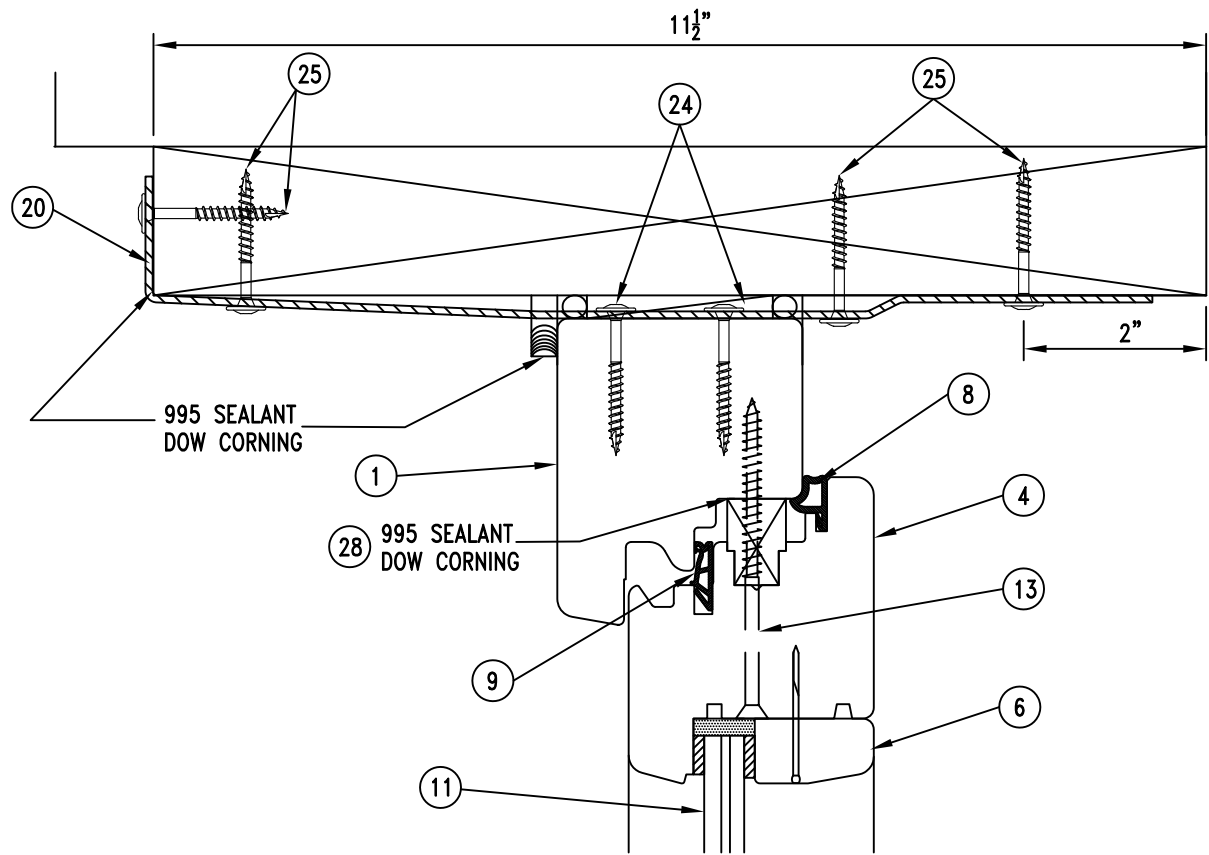
LUCAS A. TURNER, FL PE # 58201
TURNER ENGINEERING & CONSULTING, INC.
(FBPE COA # 29779)
2428 OLD NATCHEZ TRC TRL
CAMDEN, TN 38320 PH. 941-380-1574

REVISIONS	ISSUE	DATE	ISSUE NOTES

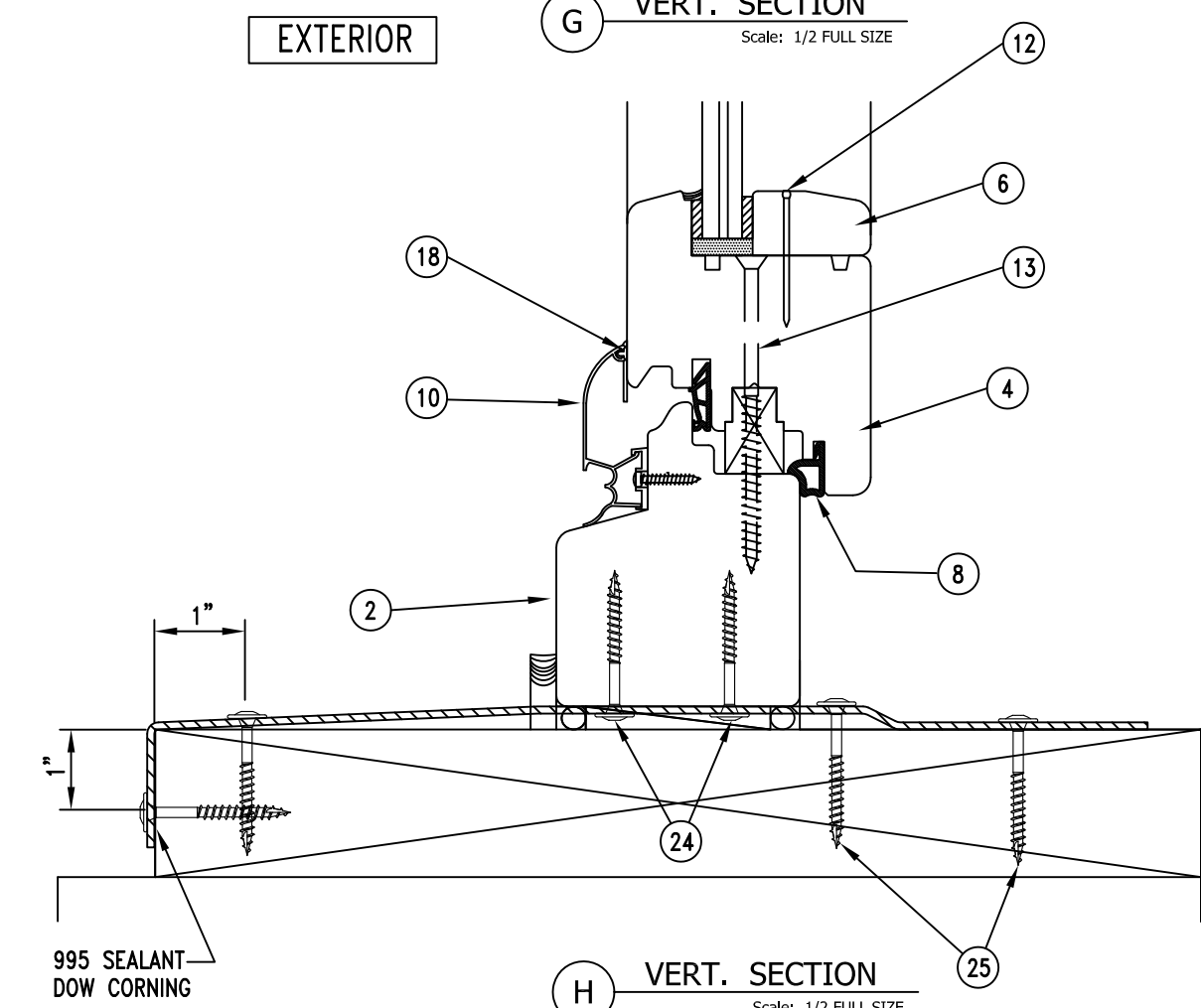
DRAWN BY: DATE
05/22/20

DRAWING NO.
FPA-EURO-TT

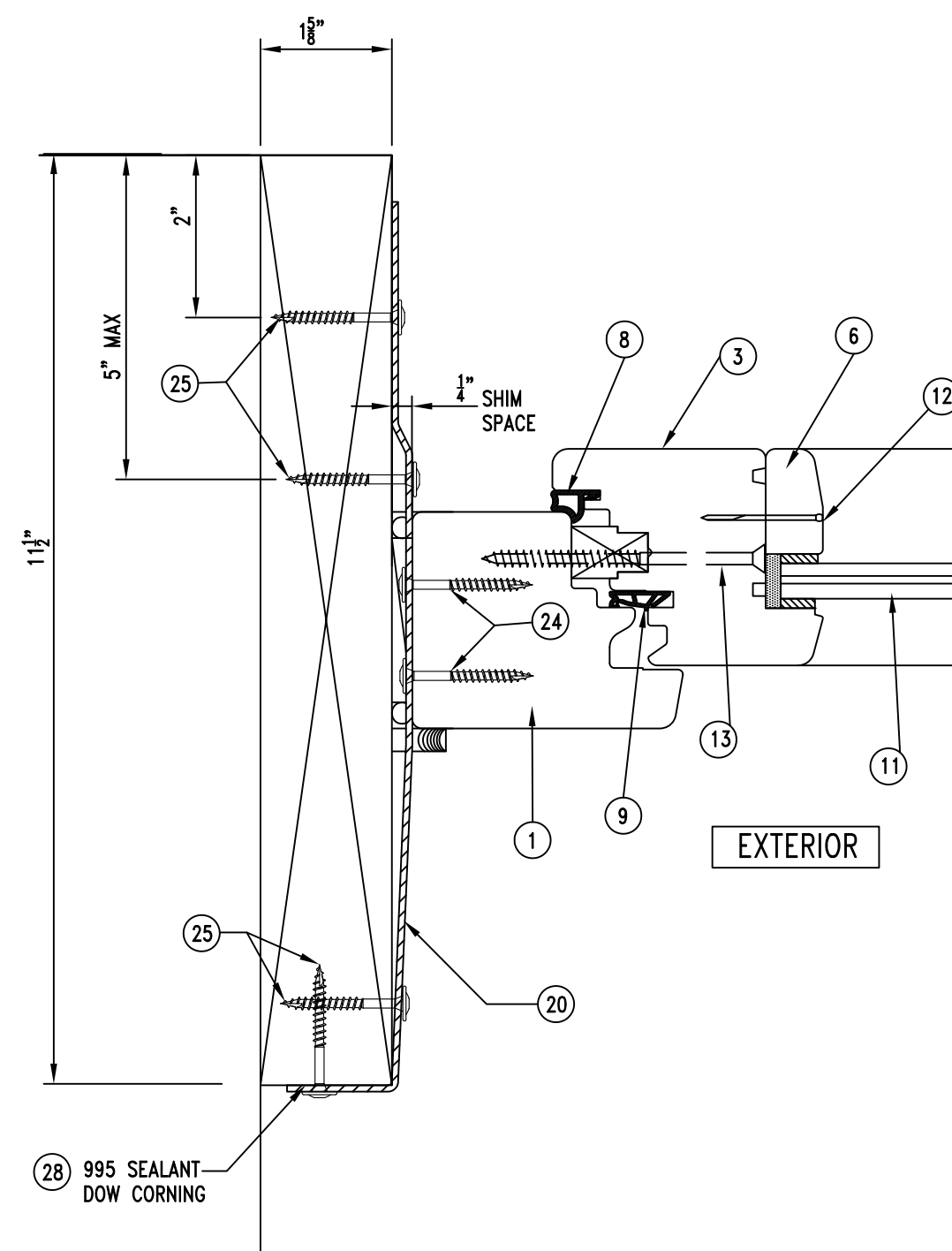
SHEET NO. 4 OF 8



G VERT. SECTION
Scale: 1/2 FULL SIZE



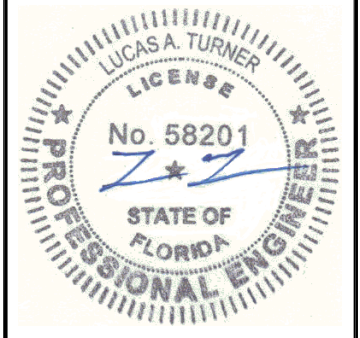
H VERT. SECTION
Scale: 1/2 FULL SIZE



F PLAN SECTION
Scale: 1/2 FULL SIZE



BORGZINNER, INC
1160 W 13TH ST., UNIT 10
RIVIERA BEACH, FL 33404
PH. (561) 848-2538 FAX (561) 844-0011
<http://www.borgzinner.com>



6/5/2020
LUCAS TURNER

EURO INSWING WOOD TILT AND
TURN WINDOWS

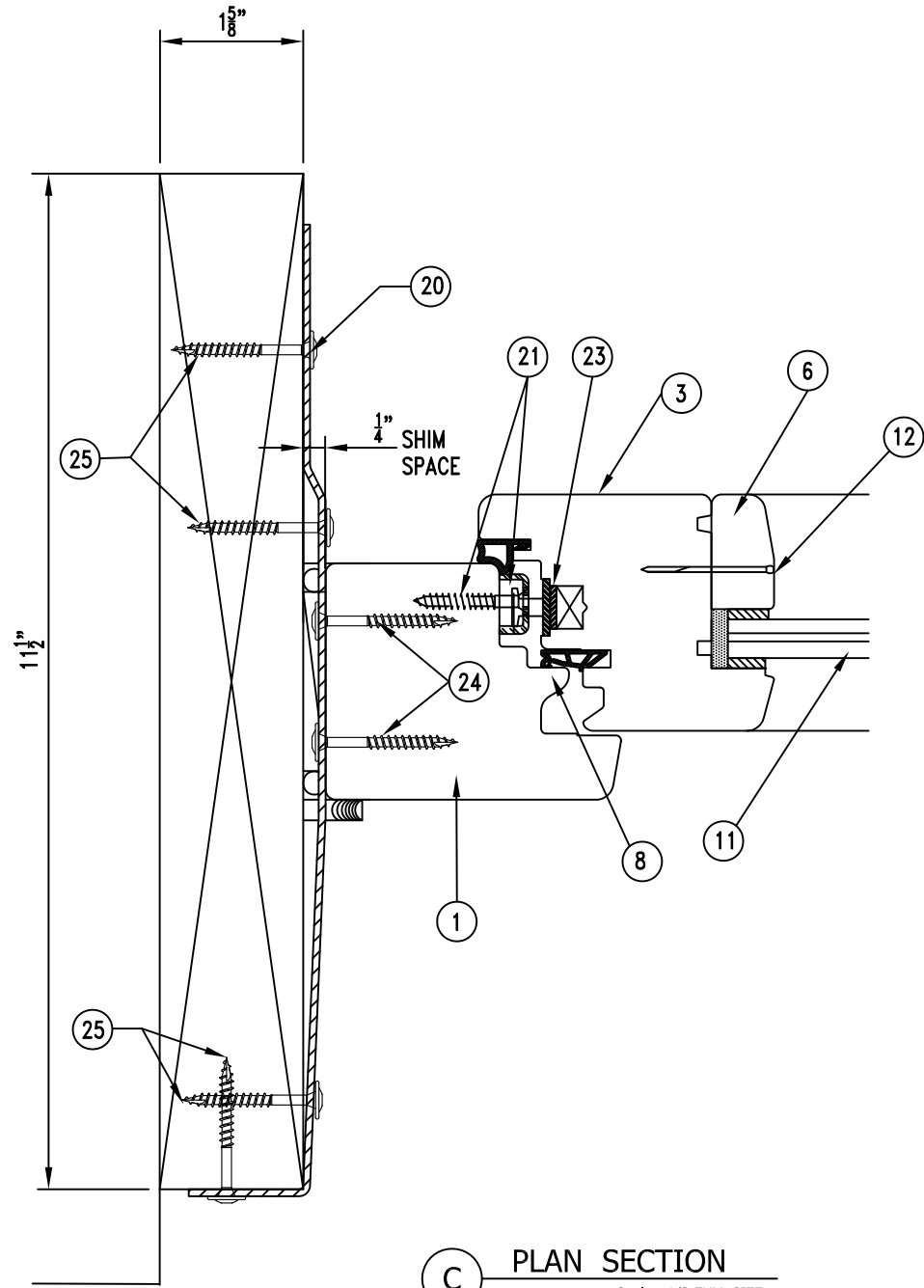
LUCAS A. TURNER, FL PE # 58201
TURNER ENGINEERING & CONSULTING, INC.
(FBPE COA # 29779)
2428 OLD NATCHEZ TRC TRL
CAMDEN, TN 38320 PH. 941-380-1574

REVISIONS	ISSUE	DATE	ISSUE NOTES

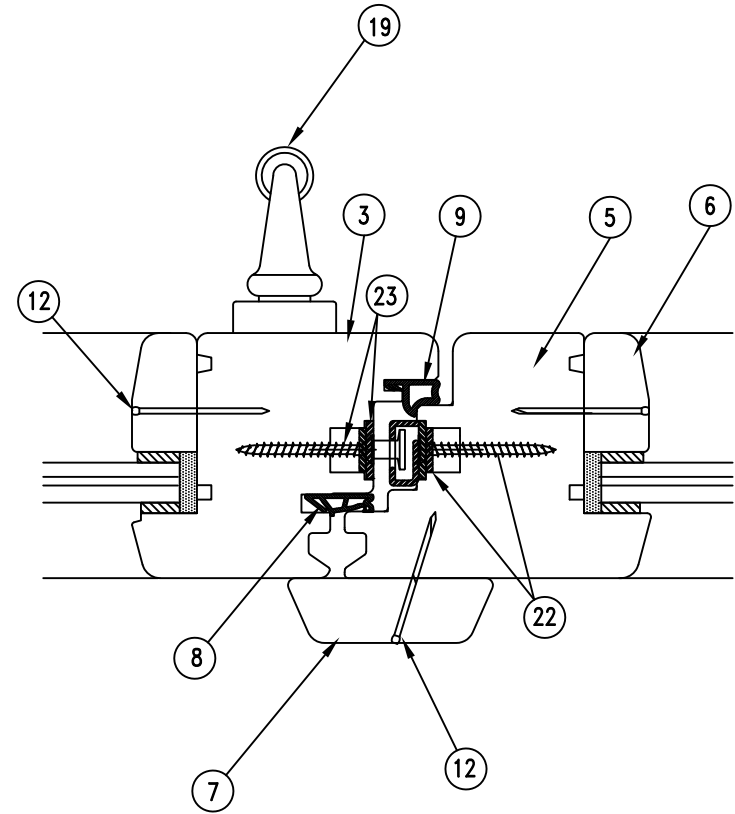
DRAWN BY: DATE
05/22/20

DRAWING NO.
FPA-EURO-TT

SHEET NO. 5 OF 8

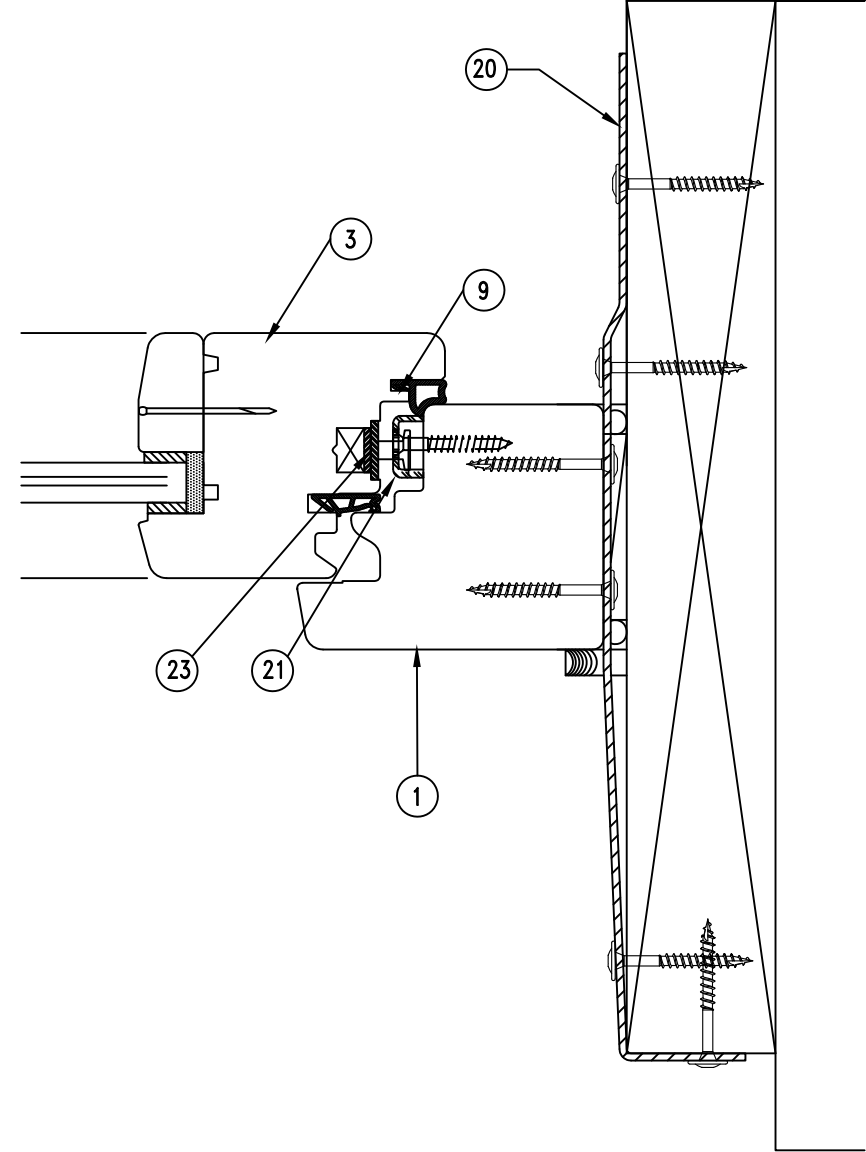


C PLAN SECTION
Scale: 1/2 FULL SIZE



EXTERIOR

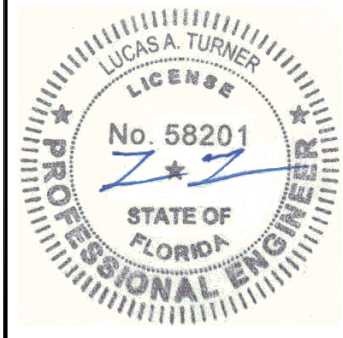
D PLAN SECTION
Scale: 1/2 FULL SIZE



E PLAN SECTION
Scale: 1/2 FULL SIZE



BORGZINNER, INC
1160 W 13TH ST., UNIT 10
RIVIERA BEACH, FL 33404
PH. (561) 848-2538 FAX (561) 844-0011
<http://www.borgzinner.com>



6/5/2020
LUCAS TURNER

EURO INSWING WOOD TILT AND
TURN WINDOWS

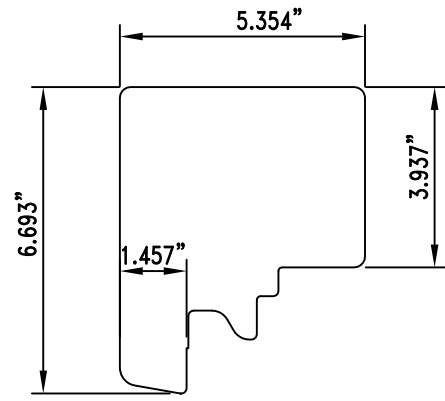
LUCAS A. TURNER, FL PE # 58201
TURNER ENGINEERING & CONSULTING, INC.
(FBPE COA # 29779)
2428 OLD NATCHEZ TRC TRL
CAMDEN, TN 38320 PH. 941-380-1574

REVISIONS	ISSUE	DATE	ISSUE NOTES

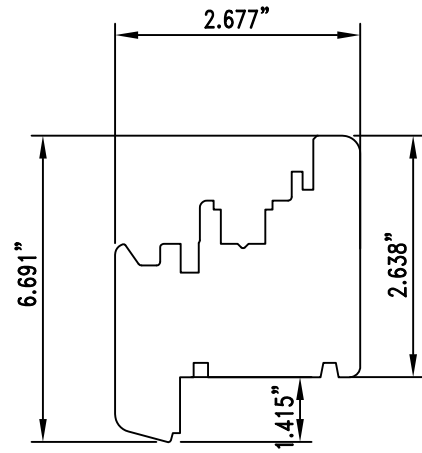
DRAWN BY: DATE
05/22/20

DRAWING NO.
FPA-EURO-TT

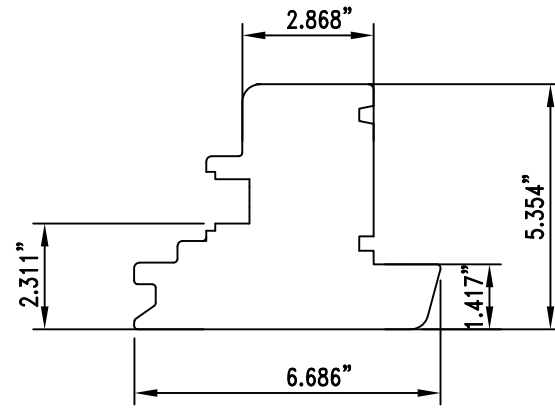
SHEET NO. 6 OF 8



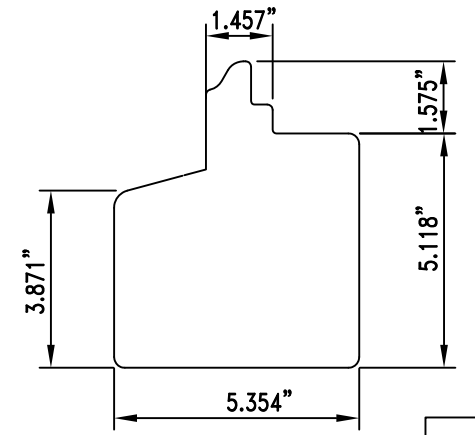
1 HEAD AND SIDE JAMB
Scale: 1/2 FULL SIZE



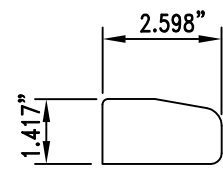
4 HORIZONTAL STILE
Scale: 1/2 FULL SIZE



5 LOCKING STILE
Scale: 1/2 FULL SIZE



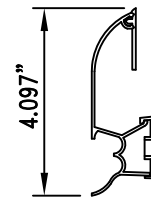
2 SILL
Scale: 1/2 FULL SIZE



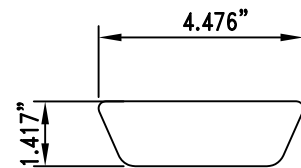
6 GLAZING STOP
Scale: 1/2 FULL SIZE



8 GASKET
Scale: 1/2 FULL SIZE



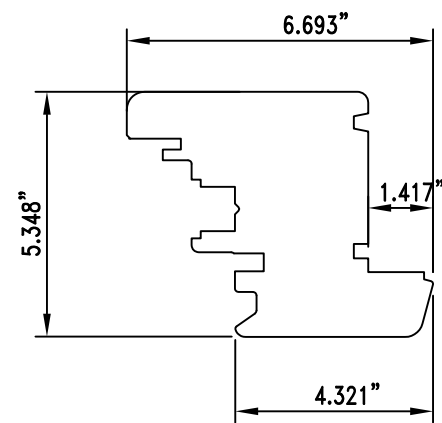
10 GASKET
Scale: 1/2 FULL SIZE



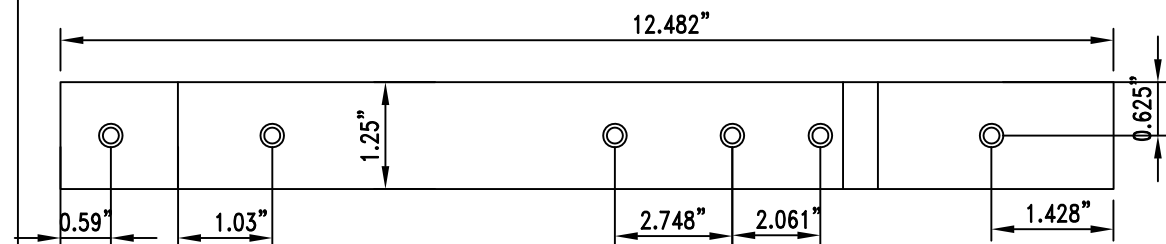
7 ASTRAGAL
Scale: 1/2 FULL SIZE



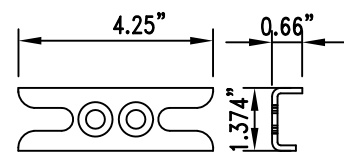
9 GASKET
Scale: 1/2 FULL SIZE



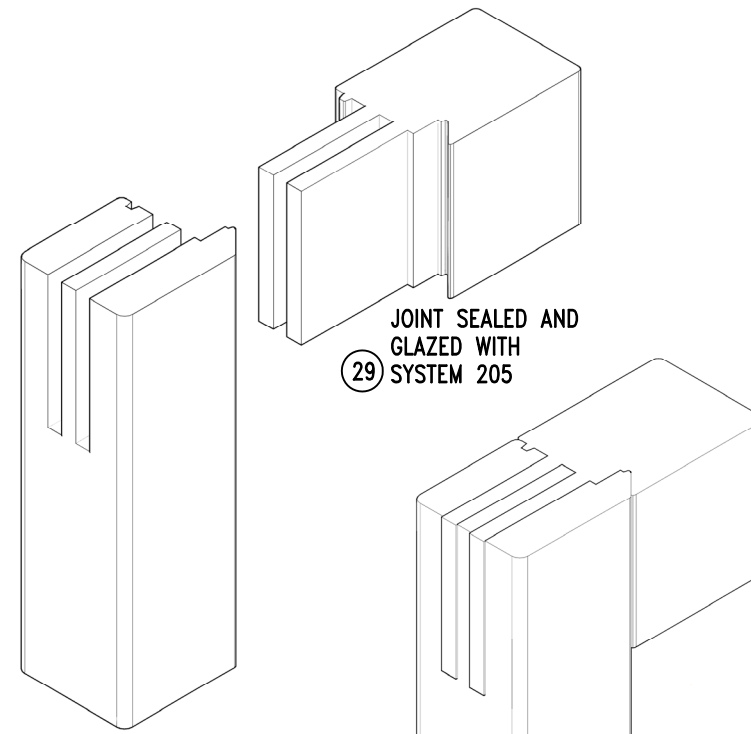
3 VERTICAL STILE
Scale: 1/2 FULL SIZE



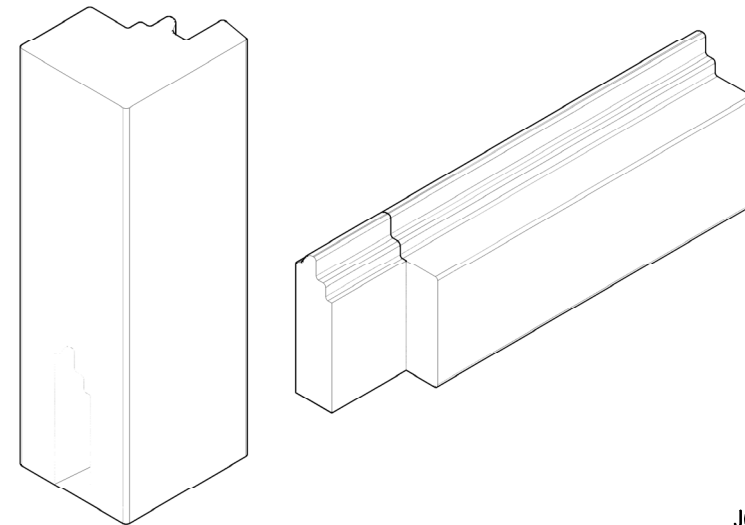
20 ATTACHMENT PLATE
Scale: 1/2 FULL SIZE
THICKNESS: 18 GAUGE



21 CAM KEEPER
Scale: 1/2 FULL SIZE



A SASH - 3 FINGER JONT



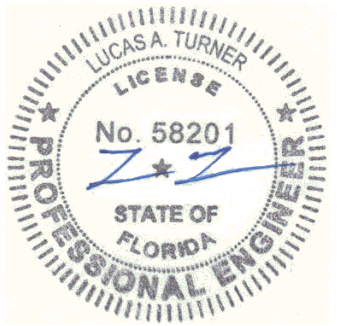
B FRAME CORNER JONT

JOINT SEALED AND GLAZED WITH SYSTEM 205

JOINT SEALED AND GLAZED WITH SYSTEM 205



BORGZINNER, INC.
1160 W 13TH ST. UNIT 10
RIVIERA BEACH, FL 33404
PH. (561) 848-2538 FAX (561) 844-0011
<http://www.borgzinner.com>



6/5/2020
LUCAS TURNER

EURO INSWING WOOD TILT AND TURN WINDOWS

LUCAS A. TURNER, FL PE # 58201
TURNER ENGINEERING & CONSULTING, INC.
(FBPE COA # 29779)
2428 OLD NATCHEZ TRC TRL,
CAMDEN, TN 38320 PH. 941-380-1574

REVISIONS	ISSUE	DATE	ISSUE NOTES

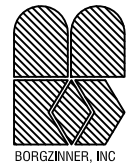
DRAWN BY: DATE
05/22/20

DRAWING NO.
FPA-EURO-TT

SHEET NO. 7 OF 8

NO.	ITEM DESCRIPTION	MATERIAL / MANUFACTURER
1	HEAD AND JAMBS	SAPELE WOOD
2	SILL	SAPELE WOOD
3	VERTICAL SASH STILES	SAPELE WOOD
4	HORIZONTAL SASH STILES	SAPELE WOOD
5	LOCKING STILE	SAPELE WOOD
6	GLAZING STOP	SAPELE WOOD
7	ASTRAGAL	SAPELE WOOD
8	GASKET	GU-ACF 5558
9	GASKET	FFI- A 265 ESP BOB
10	FFI- DRIP RAIL	FFI- AL 467 DBR WITH #8 X 1" ST. STL WD SCREWS, 12" O/C
11	GLASS	7/16" LAMINATED, (3/16" 0.090" SAFLEX/3/16" HS
12	16GA X 1 1/2" LONG ST. STL FIN NAILS	STARTING 1" FROM CORNERS THEN 9" MAX O/C
13	#10 X 3 1/2" LONG ST, STL WOOD SCREWS	STARTING 6" FROM CORNERS THEN 10" MAX O/C
16	GU-UNI-JET CONTURA HINGE	ARM STAY-6-37112-44 CORNER HINGE-6-37099-00
18	FFI- DRIP RAIL GASKET	GASKET- BLACK EV4050
19	GU- HANDLE DIRIGENT	38MM UC5/BROWN
20	ATTACHMENT PLATES (GALVANIZED)	WITH #10 X 1 1/2" LONG ST, STL WOOD SCREWS (ITEM 25)
21	GU- TT KEEPER	6-32207-18-0-1 WITH (2) #10 X 1 1/2" L WOOD SCREWS
22	GU- VARIABLE GEAR 3 CAM	G-22086-00-0-1 WITH #8 1 1/2" LONG ST STL WOOD SCREW
23	GU- LOCK 3 CAM	G-32076-05-0-1 WITH #8 1 1/2" LONG ST STL WOOD SCREW
24	#10 X 2" LONG ST, STL WOOD SCREWS	(2) AT EACH PLATE / FRAME ATTACHMENT
25	PLATE / BUCK ATTACHMENT SCREWS	WOOD BUCK : #10 X 1 1/2" LONG ST. STL SCREWS (4) SCREWS PER
26	1/16" X 3/8" GLAZING TAPE	CRL # 98418X38BL FOAM TAPE
27	1/8" X 3/8" GLAZING TAPE	CRL # 982116X38BL FOAM TAPE
28	PERIMETER SEALANT AT GLASS	DOW CORNING 995 SEALANT
29	WEST SYSTEM 205 GLUE	AT ALL GLUED JOINTS

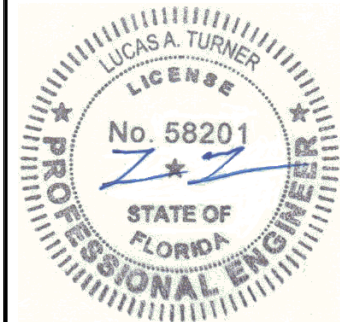
MANUFACTURER



BORGZINNER, INC

1160 W 13TH ST, UNIT 10
RIVIERA BEACH, FL 33404

PH. (561) 848-2538 FAX (561) 844-0011
http://www.borgzinner.com



6/5/2020
LUCAS TURNER

EURO INSWING WOOD TILT AND
TURN WINDOWS

LUCAS A. TURNER, FL PE # 58201
TURNER ENGINEERING & CONSULTING, INC.
(FBPE COA # 29779)
2428 OLD NATCHEZ TRC TRL
CAMDEN, TN 38320 PH. 941-380-1574

REVISIONS	ISSUE	DATE	ISSUE NOTES

DRAWN BY: DATE
05/22/20

DRAWING NO.
FPA-EURO-TT

SHEET NO. 8 OF 8