

Bill of material per device			
Item	Description	Pt. No.	Qty.
1	Approved door and frame	Under sep. NOA.	2
2	DORMA 9800 Chassis	Aluminum	1
3	Touch bar and rail assy.		1
4	Thru bolts		8
5	Outside trim assembly	See notes;	1
6	Strike angle	Stainless steel	1
7	#12-24 x 3/4" PHRHMS	Steel	8
8	Hinges	Part of sep. NOA.	4
9	Top latch assembly	Steel	1
10	#426 Strike plate w/#18	Malleable iron	1
11	Top connecting rod	1/2" O.D. Tubing	1
12	Bottom connecting rod	1/2" O.D. Tubing	1
13	Bottom slide bolt assy.	Steel	1
14	Chassis cover		1
15	#340 bottom strike pack w 1/4"-20 Power Dropin	Steel	1
16	#12-24 x 1 1/2" FHPHMS		2
17	Core complying with FBC	Part of sep. NOA	-
18	#12-24 X 3/4" OHPMS	GR. 2 STEEL	2

10 ga.  
Steel head frame  
reinforcement rq'd.  
Weld in place.

See steel re-  
inforcement notes.

100" Max.  
Frame width

96"  
Panel

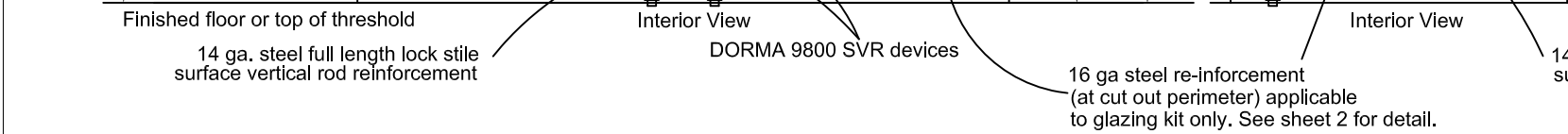
1  
14 Ga. Min.  
Closer reinforcement

16 ga doors and 16 ga.  
frames under separate  
NOA approval.

1 3/4" min. thickness

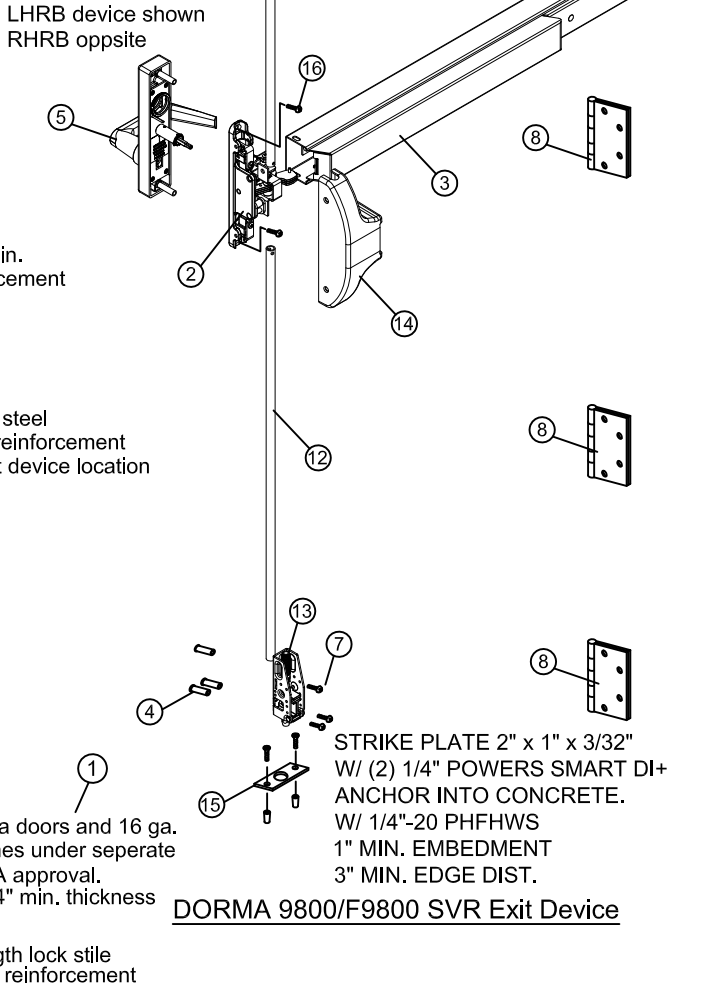
Continuous steel 16 ga.  
min. reinforcement rq'd.

Lock, hinge stiles and rails.



On Impact Full Glazed Outswing Single And Pair Steel Doors Having Current NOA or Current HVHZ Florida State Approval

NOTE: Impacted glass kit, having current component NOA or impacted glazed steel door, having current NOA are under separate approval. Lower design pressure of glazed kit NOA, door NOA or this device NOA shall control as final Design Pressure application.



Limitations:

1. Device complies with FBC 2017 (6th Edition) and has been tested to TAS 201-94, 202-94 and 203-94.
2. Each device is approved to be used as an equal alternate in applicable 16 ga. (0.053" min.) frame and out swing 16 ga. (0.053" min.) commercial steel door holding a current NOA. Lowest design pressure rating applies.
3. Device shall be installed on a approved 16 ga. (0.053) commercial approved core filled steel door no larger than shown on this drawing set.
4. Steel reinforcement (by door mfg. required as indicated on the detail drawing in this set.)
5. Electrical devices are not part of this approval and must be reviewed by authority having jurisdiction in the area. (AHJ)

Certifications: Underwriter's Laboratories - UL10C, UBC7-2 (1997) ANSI/BHMA A156.3 Grade 1 Exit device 3/4" latch bolt throw top and bottom.

Frame - Steel 16 ga. (0.053" min.)

Hinge reinforcements of 9 ga. (0.132" min) steel at ea. hinge location

Header reinforced by 10 ga. (0.132" min.) steel bar.

Door - Steel 16 ga. (0.053" min.). Lock and Hinge styles and top and bottom rails reinforced with full length 16 ga. (0.053" min.) steel channel.

Cut out reinforcement of 16 ga. (0.053" min.) steel channel applicable to glazing kit only.

Lock styles reinforced by 14 ga. (0.071" min.) full length steel hardware reinforcement.

Hinge Stiles reinforced by exit device reinforcement of 14 ga. (0.071" min.) at ea. location on hinge stiles.

Closer reinforcement of 14 ga. (0.071" min.) steel at ea. closer hardware location as required.

Hinge reinforcements of 9 ga. (0.132" min) steel at ea. hinge location

Strikes, hinges, and header re-inforcement as required on detail drawing.

All reinforcements to be spot welded or better by door manufacturer.

All dimensions in accordance with the manufacturer's standard installation instructions for Model DORMA 9800 surface vertical rod panic device.

Outside trim may be one of following models: ZODT, ZP25, ZP02, ZP03/04, ZP11/12, ZK08/09, ZR23, ZT23, ZC23, ZG23, ZR08/09, ZT08/09, ZC08/09, OR ZG08/09.

Thru bolts must be used on all installations as shown.

Inter-locking strike angle must be installed on all top latches as shown. Bill of material for DORMA 9800 x DORMA 9800 only.

6th Edition FBC Update	5	FM	10-23-17
5th Edition FBC Update	4	LS	6-16-15
Corrected per Dade	3	TA	7-21-11
Add notes	2	TA	6-1-11
REVISIONS	NO.	BY	DATE

Sheet 1 of 2

DWG. NO. 9800-1

**dormakaba** 

**dormakaba USA**  
6161 E 75TH ST  
INDIANAPOLIS, IN 46250

CHKD BY: DC	DATE: 2/1/11
-------------	--------------

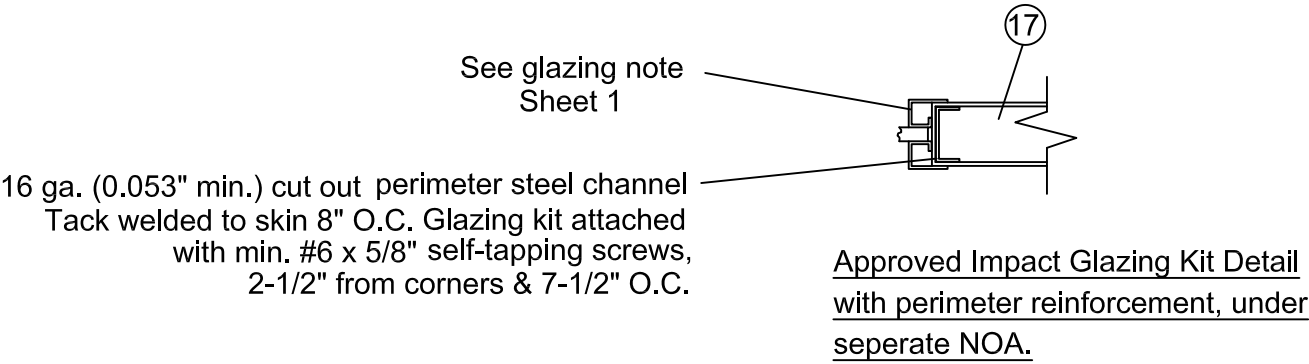
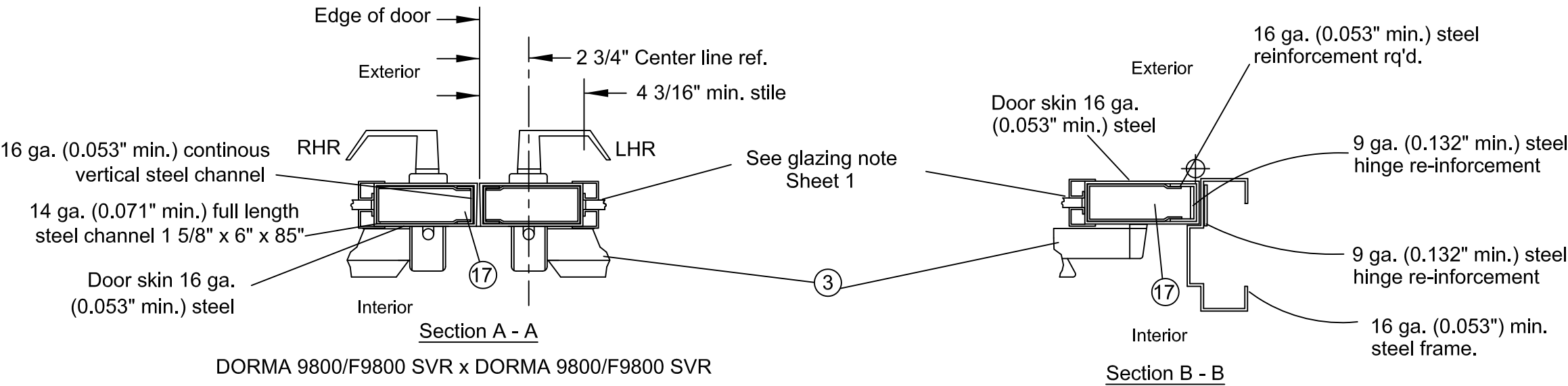
dormakaba USA  
6161 E 75TH ST  
DIANAPOLIS, IN 46250

6th Edition FBC Update	5	FM	10-23-17
5th Edition FBC Update	4	LS	6-16-15
Corrected per Dade	3	TA	7-21-11
Add notes	2	TA	6-1-11
REVISIONS	NO.	BY	DATE

Sheet 1 of 2

DWG. NO. 9800-1

DORMA 9800/F9800 Narrow Stile Surface Vertical Rod Application  
On Impact Full Glazed Outswing Single And Pair Steel Doors Having Current NOA or Current HVHZ Florida State Approval



GENERAL NOTES

- Limitations:
1. Device complies with FBC 2017 (6th Edition) and has been tested to TAS 201-94, 202-94 and 203-94.
  2. Each device is approved to be used as an equal alternate in applicable 16 ga. (0.053" min.) frame and out swing 16 ga. (0.053" min.) commerical steel door holding a current NOA. Lowest design pressure rating applies.
  3. Device shall be installed on a approved 16 ga. (.053) commercial approved core filled steel door no larger than shown on this drawing set.
  4. Steel reinforcement (by door mfg. required as indicated on the detail drawing in this set.
  5. Electrical devices are not part of this approval and must be reviewed by authority having jurisdiction in the area. (AHJ)
- Certifications:
- Underwriter's Laboratories - UL10C, UBC7-2 (1997) ANSI/BHMA A156.3 Grade 1 Exit device 3/4" latch bolt throw top and bottom.
- Frame - Steel 16 ga. (0.053" min.)
- Hinge reinforcements of 9 ga. (0.132" min) steel at ea. hinge location
- Header reinforced by 10 ga. (0.132" min.) steel bar.
- Door - Steel 16 ga. (0.053" min.). Lock and Hinge stiles and top and bottom rails reinforced with full length 16 ga. (0.053" min.) steel channel. Cut out reinforcement of 16 ga. (0.053" min.) steel channel applicable to glazing kit only.
- Lock stiles reinforced by 14 ga. (0.071" min.) full length steel hardware reinforcement.
- Hinge Stiles reinforced by exit device reinforcement of 14 ga. (0.071" min.) at ea. location on hinge stiles.
- Closer reinforcement of 14 ga. (0.071" min.) steel at ea. closer hardware location as required.
- Hinge reinforcements of 9 ga. (0.132" min) steel at ea. hinge location
- Strikes, hinges, and header re-inforcement as required on detail drawing.
- All reinforcements to be spot welded or better by door manufacturer.
- All dimensions in accordance with the manufacturer's standard installation instructions for Model DORMA 9800 surface vertical rod panic device.
- Outside trim may be one of following models: ZODT, ZP25, ZP02, ZP03/04, ZP11/12, ZK08/09, ZR23, ZT23, ZC23, ZG23, ZR08/09, ZT08/09, ZC08/09, OR ZG08/09.
- Thru bolts must be used on all installations as shown. Inter-locking strike angle must be installed on all top latches as shown. Bill of material for DORMA 9800 x DORMA 9800 only.

Building Drops, Inc.  
398 E. Dania Beach Blvd.  
Dania Beach, FL 33004  
FBPE Cert. of Authorization No. 29578

Hermes E. Notero, P.E.  
Florida PE No. 73778

DESCRIPTION: DORMA 9800 SVR Exit Device on 16 ga. full glass doors.			<div></div> <div>dormakaba USA. 6161 E 75TH ST INDIANAPOLIS, IN 46250</div>		6th Edition FBC Update	5	FM	10-23-17
					5th Edition FBC Update	4	LS	6-16-15
					Corrected per Dade	3	TA	7-21-11
					Add notes	2	TA	6-1-11
					REVISIONS	NO.	BY	DATE
					Sheet 2 of 2	9800-1		
SCALE: None	DRAWN BY: FM	DATE: 10/23/2017	CHKD BY: DC	DATE: 2/1/11	DWG. NO.			