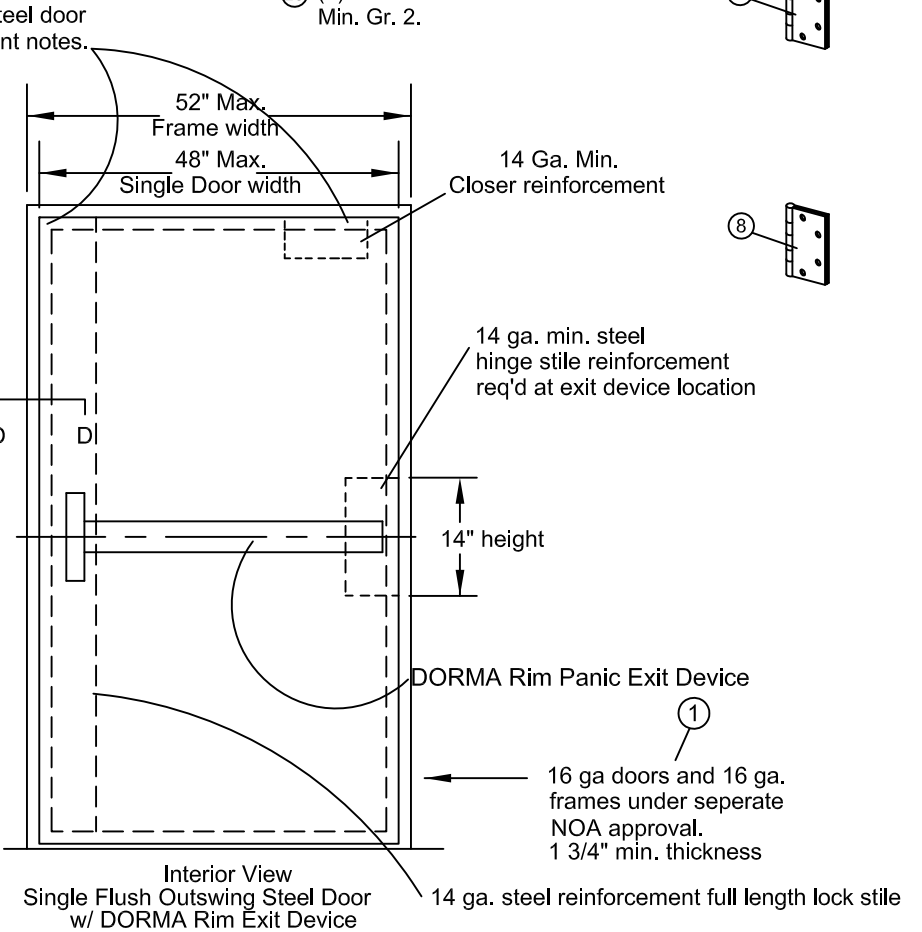
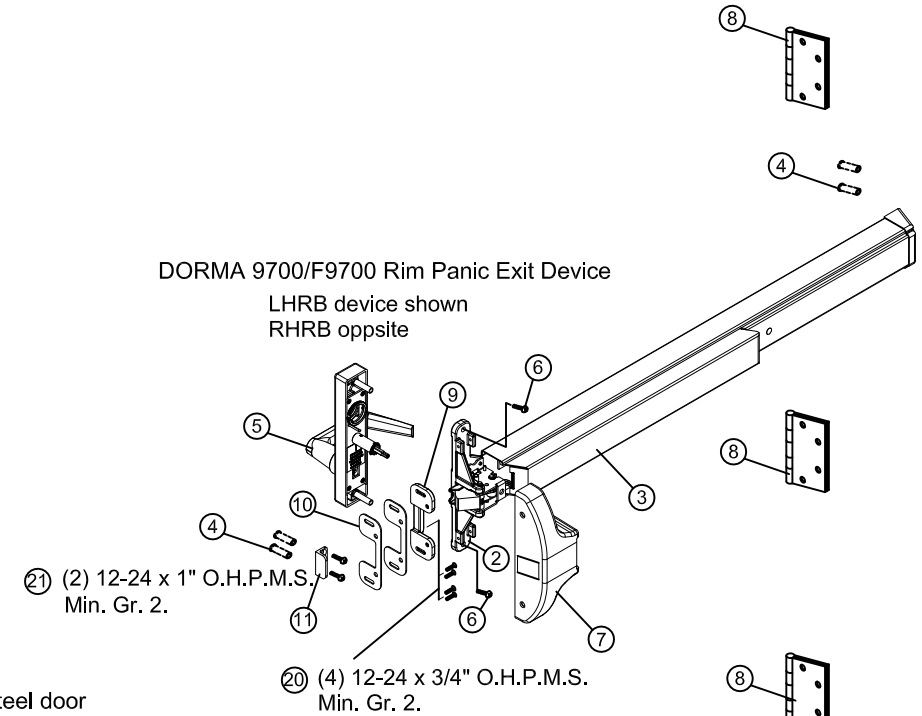
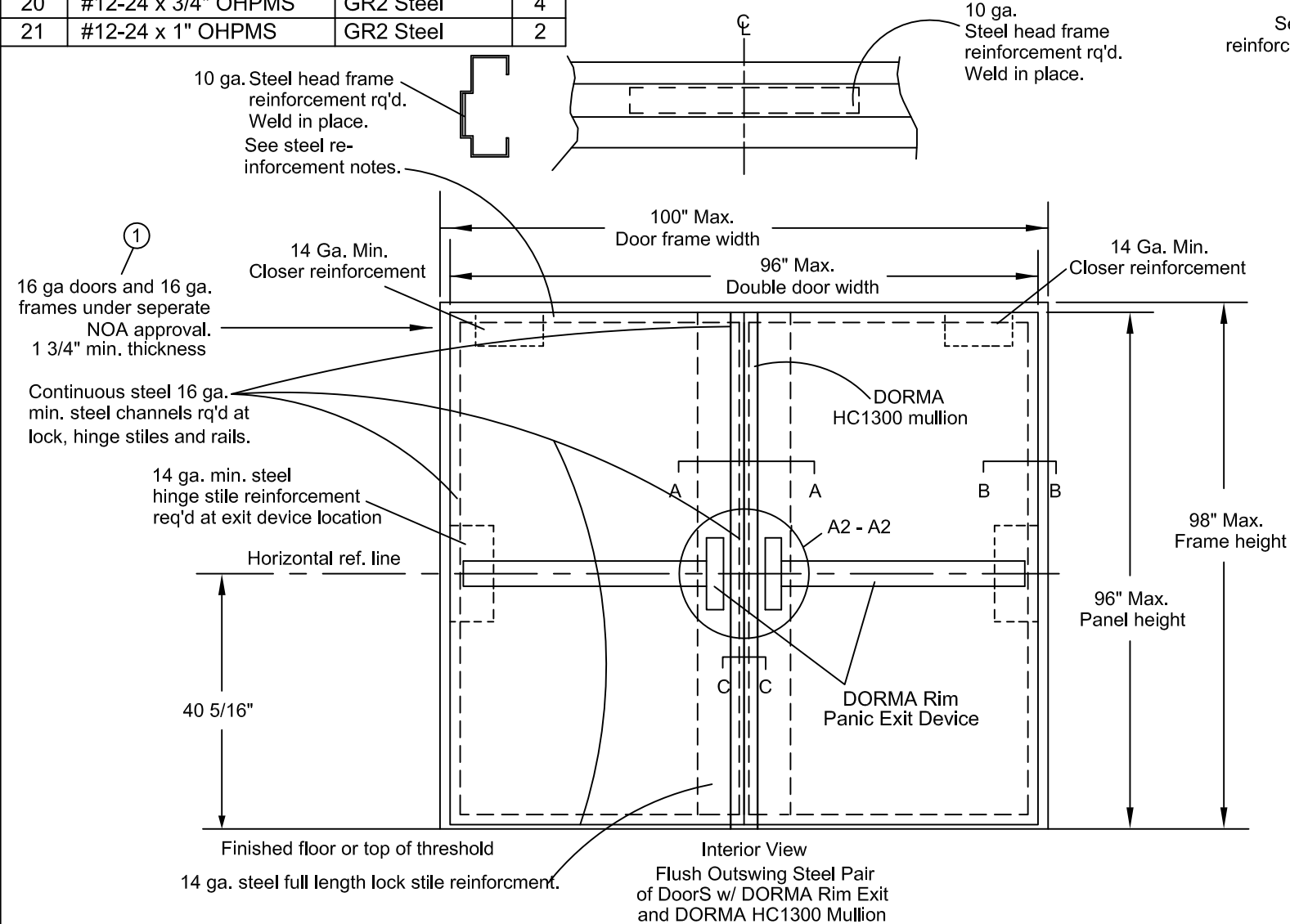


DORMA 9700/F9700 Rim Exit Device			
Bill of material per device			
Item	Description	Pt. No./Mat'l	Qty.
1	Approved 16 ga. door & 16 ga. frame under separate NOA.		1
2	DORMA 9700/F9700 Chas.	Cast steel	1
3	Touch bar and rail assy.		1
4	3/8" Diameter Thru bolts		2
5	Outside trim assembly	See notes;	1
6	12-24 x 1 1/2" PHRHMS	Gr. 2 Steel	8
7	Chassis cover		1
8	Hinges	Part of sep. NOA.	4
9	Strike #463 w/ #20	Malleable iron	1
10	Strike shims	Steel	2
11	Strike angle w/ #21	Stainless steel	1
12	DORMA HC1300 removable Steel mullion		1
13	Mullion adapter bottom	Steel	1
14	Bottom fitting	Mallable cast	1
15	Bottom mounting plate	Steel	1
16	Kwikbolt 3 exp. anchors	Steel	2
17	Honeycomb or FBC approved core		2
18	Top mullion fitting	Steel	1
19	Top mullion adapter	Steel	1
20	#12-24 x 3/4" OHPMS	GR2 Steel	4
21	#12-24 x 1" OHPMS	GR2 Steel	2

DORMA 9700/F9700 Narrow Stile Rim Panic Exit Devices w/wo DORMA HC1300 Mullion Application  
On Impact Flush Outswing Single And Pair Steel Doors Having Current NOA or Current HVHZ Florida State Approval

DORMA 9700/F9700 Rim Panic Exit Device	
Design pressure for single or pairs with DORMA HC1300 Mullion.	
65 PSF	Positive
65 PSF	Negative




GENERAL NOTES

Limitations:  
1. Device complies with FBC 2017 (6th Edition) and has been tested to TAS 201-94, 202-94 and 203-94.  
2. Each device is approved to be used as an equal alternate in applicable 16 ga. (0.053" min.) frame and out swing 16 ga. (0.053" min.) commerical steel door holding a current NOA. Lowest design pressure rating of panic exit device or steel door shall control.  
3. Device shall be installed on a approved 16 ga. (.053) commercial approved FBC core filled or honey comb steel door no larger than shown on this detail.  
4. Steel reinforcement (by door mfg. required as indicated on the detail drawing in this set.)  
5. Electrical devices are not part of this approval and must be reviewed by authority having jurisdiction in the area. (AHJ) Certifications: Underwriter's Laboratories - UL10C, UBC7-2 (1997) ANSI/BHMA A156.3 Grade 1 Exit device (2008) 3/4" latch bolt throw.  
Frame - Steel 16 ga. (0.053" min.)  
Hinge reinforcements of 9 ga. (0.132" min) steel at ea. hinge location.  
14 ga. strike reinforcement in frame. Header reinforced by 10 ga. (0.132" min.) steel bar.  
Door - Steel 16 ga. (0.053" min.) Lock and Hinge stiles and top and bottom rails reinforced with full length 16 ga. (0.053" min.) steel channel.  
Lock stiles reinforced by 14 ga. (0.071" min.) full length steel hardware reinforcement.  
Hinge Stiles reinforced by exit device reinforcement of 14 ga. (0.071" min.) at ea. location on hinge stiles.  
Closer reinforcement of 14 ga. (0.071" min.) steel at ea. closer hardware location as required.  
Hinge reinforcements of 9 ga. (0.132" min) steel at ea. hinge location  
Strikes, hinges, and header re-inforcement as required on detail drawing in this approval. All reinforcements to be spot welded or better by door manufacturer.  
All dimensions in accordance with the manufacturer's standard installation instructions for Model DORMA 9700/F9700 Rim exit device. Outside trim may be one of following models: ZODT, ZP25, ZP02, ZP03/04, ZP11/12, ZK08/09, ZR23, ZT23, ZC23, ZG23, ZR08/09, ZT08/09, ZC08/09, OR ZG08/09.  
Thru bolts must be used on all installations as shown. Inter-locking strike angle must be installed by latches as shown.  
All fasteners and associated hardware shall be corrosion resistant in compliance with HVHZ material protection sections of the FBC.  
Bill of material for DORMA 9700 x DORMA HC1300 x DORMA 9700 hardware only.

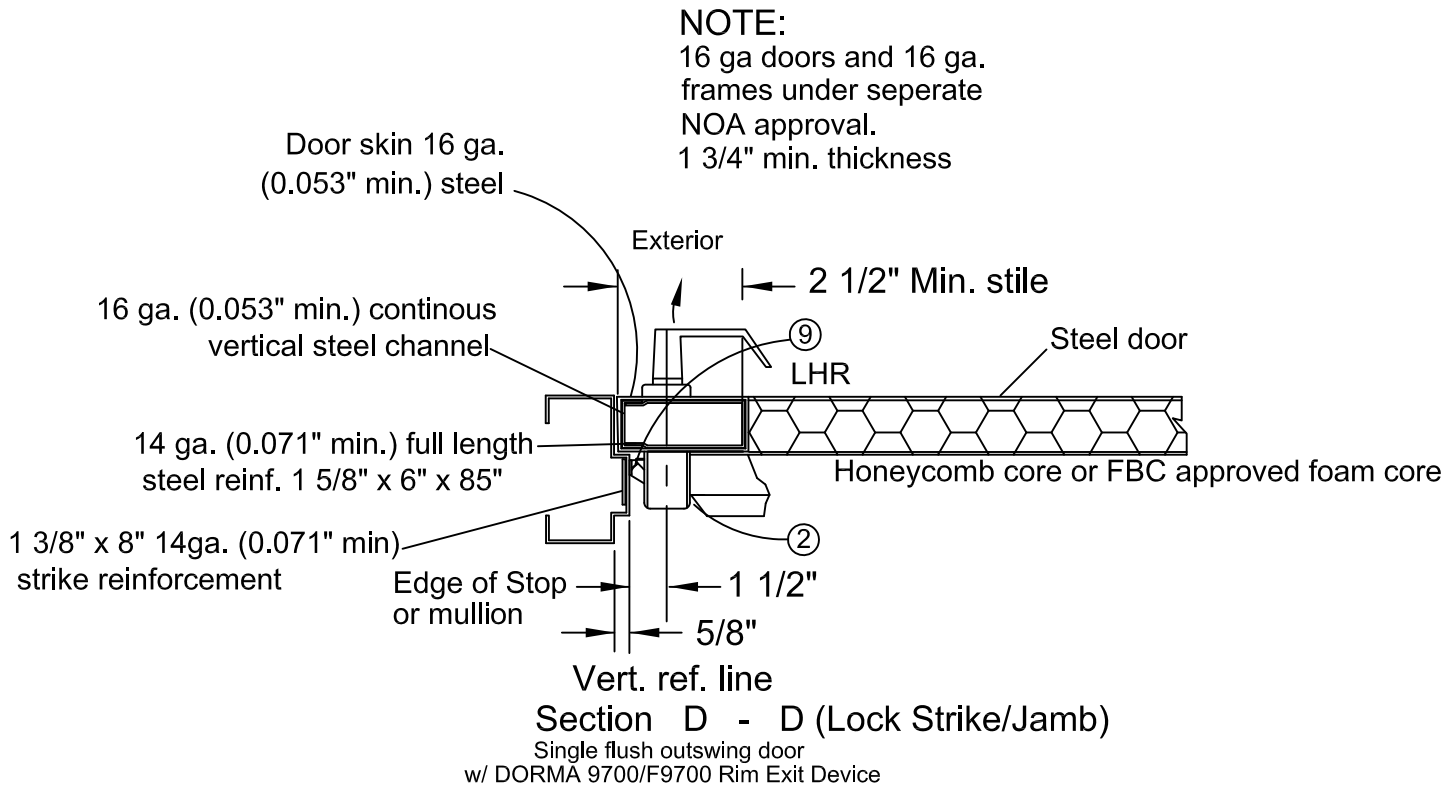
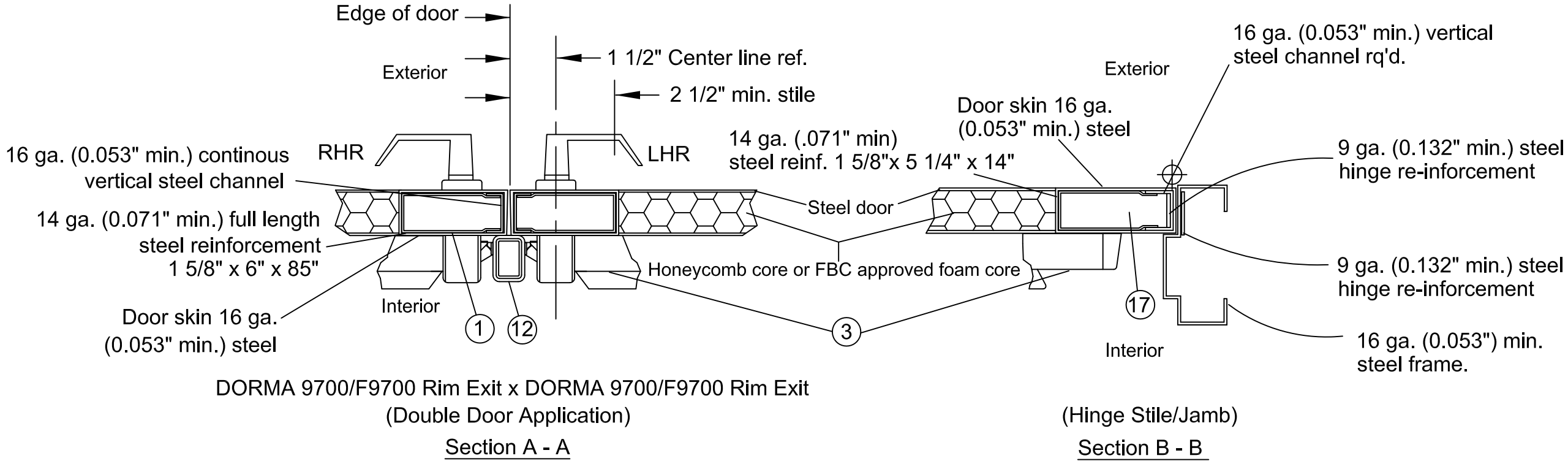
Building Drops, Inc.  
398 E. Dania Beach Blvd  
Dania Beach, FL 33004  
FBPE Cert. of Authorization No. 29573

Professional Engineer  
STATE OF FLORIDA  
No. 73778  
Hermes F. Norero, P.E.  
Florida PE No. 73778

DESCRIPTION: DORMA 9700/F9700 Rim Exit Device on 16 ga. flush steel doors.			  dormakaba USA. 6161 E 75TH ST INDIANAPOLIS, IN 46250	
SCALE: None	DRAWN BY: FM	DATE: 10/23/17	CHKD BY: DC	DATE: 11/2/11

6th Edition FBC Update	1	FM	10-23-17
5th Edition FBC Update	2	LS	6-16-15
Rev. Per Dade Letter 10/31/11	1	TA	11-1-2011
REVISIONS	NO.	BY	DATE
Sheet 1 of 3	9700-1		
DWG. NO.			

DORMA 9700/F9700 Narrow Stile Rim Panic Exit Devices w/wo DORMA HC1300 Mullion Application  
On Impact Flush Outswing Single And Pair Steel Doors Having Current NOA or Current HVHZ Florida State Approval



NOTE:  
16 ga doors and 16 ga.  
frames under seperate  
NOA approval.  
1 3/4" min. thickness

### GENERAL NOTES

Limitations:

1. Device complies with FBC 2017 (6th Edition) and has been tested to TAS 201-94, 202-94 and 203-94.
2. Each device is approved to be used as an equal alternate in applicable 16 ga. (0.053" min.) frame and out swing 16 ga. (0.053" min.) commerical steel door holding a current NOA. Lowest design pressure rating of panic exit device or steel door shall control.
3. Device shall be installed on a approved 16 ga. (.053) commercial approved FBC core filled or honey comb steel door no larger than shown on this detail.
4. Steel reinforcement (by door mfg. required as indicated on the detail drawing in this set.)
5. Electrical devices are not part of this approval and must be reviewed by authority having jurisdiction in the area. (AHJ) Certifications: Underwriter's Laboratories - UL10C, UBC7-2 (1997) ANSI/BHMA A156.3 Grade 1 Exit device (2008) 3/4" latch bolt throw.

Frame - Steel 16 ga. (0.053" min.)

Hinge reinforcements of 9 ga. (0.132" min) steel at ea. hinge location.

14 ga. strike reinforcement in frame. Header reinforced by 10 ga. (0.132" min.) steel bar.

Door - Steel 16 ga. (0.053" min.) Lock and Hinge stiles and top and bottom rails reinforced with full length 16 ga. (0.053" min.) steel channel.

Lock stiles reinforced by 14 ga. (0.071" min.) full length steel hardware reinforcement.

Hinge Stiles reinforced by exit device reinforcement of 14 ga. (0.071" min.) at ea. location on hinge stiles.

Closer reinforcement of 14 ga. (0.071" min.) steel at ea. closer hardware location as required.

Hinge reinforcements of 9 ga. (0.132" min) steel at ea. hinge location

Strikes, hinges, and header re-inforcement as required on detail drawing in this approval. All reinforcements to be spot welded or better by door manufacturer.

All dimensions in accordance with the manufacturer's standard installation instructions for Model DORMA 9700/F9700 Rim exit device. Outside trim may be one of following models: ZODT, ZP25, ZP02, ZP03/04, ZP11/12, ZK08/09, ZR23, ZT23, ZC23, ZG23, ZR08/09, ZT08/09, ZC08/09, OR ZG08/09.

Thru bolts must be used on all installations as shown. Inter-locking strike angle must be installed by latches as shown.

All fasteners and associated hardware shall be corrosion resistant in compliance with HVHZ material protection sections of the FBC.

Bill of material for DORMA 9700 x DORMA HC1300 x DORMA 9700 hardware only.

Building Drops, Inc.  
398 E. Dania Beach Blvd.  
Dania Beach, FL 33004  
FBPE Cert. of Authorization No. 29578

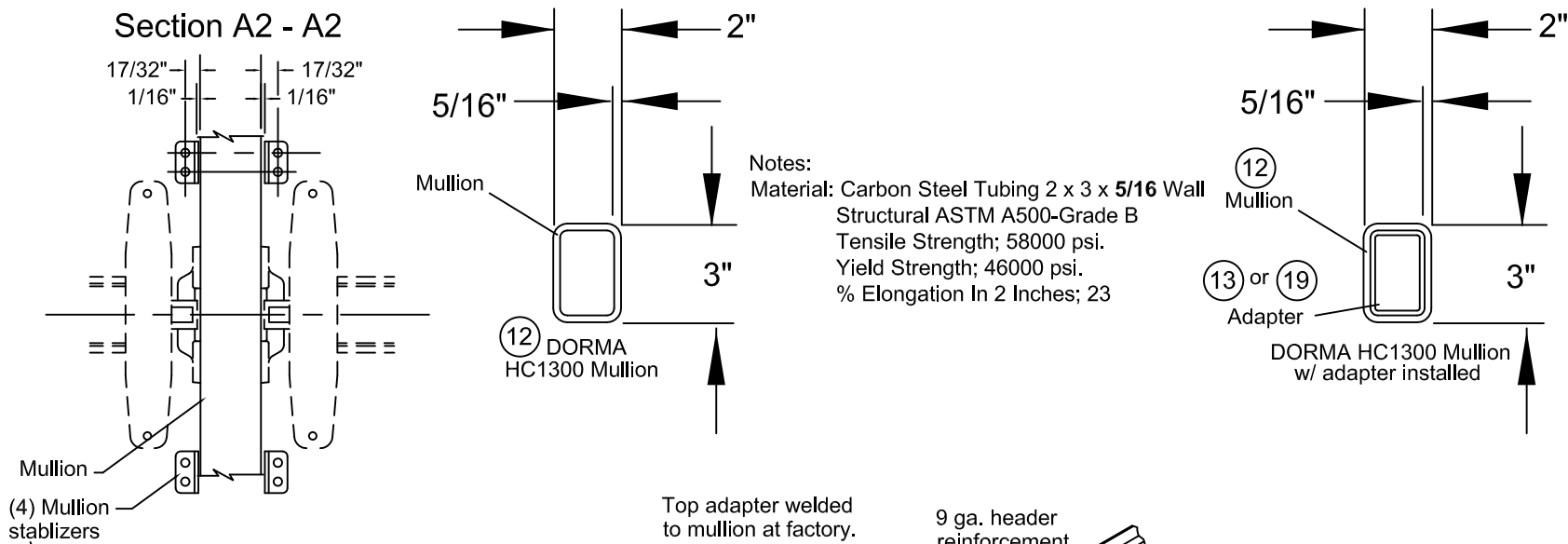
Hermes F. Norero, P.E.  
Florida PE No. 73778

DESCRIPTION: DORMA 9700 Rim Exit Device on 16 ga. flush steel doors.	  dormakaba USA. 6161 E 75TH ST INDIANAPOLIS, IN 46250		
SCALE: None			
DRAWN BY: FM	DATE: 10/23/17	CHKD BY: DC	DATE: 11/2/11

6th Edition FBC Update	1	FM	10-23-17
5th Edition FBC Update	2	LS	6-16-15
Rev. Per Dade Letter 10/31/11	1	TA	11-1-2011
REVISIONS	NO.	BY	DATE
Sheet 2 of 3			
DWG. NO. 9700-1			



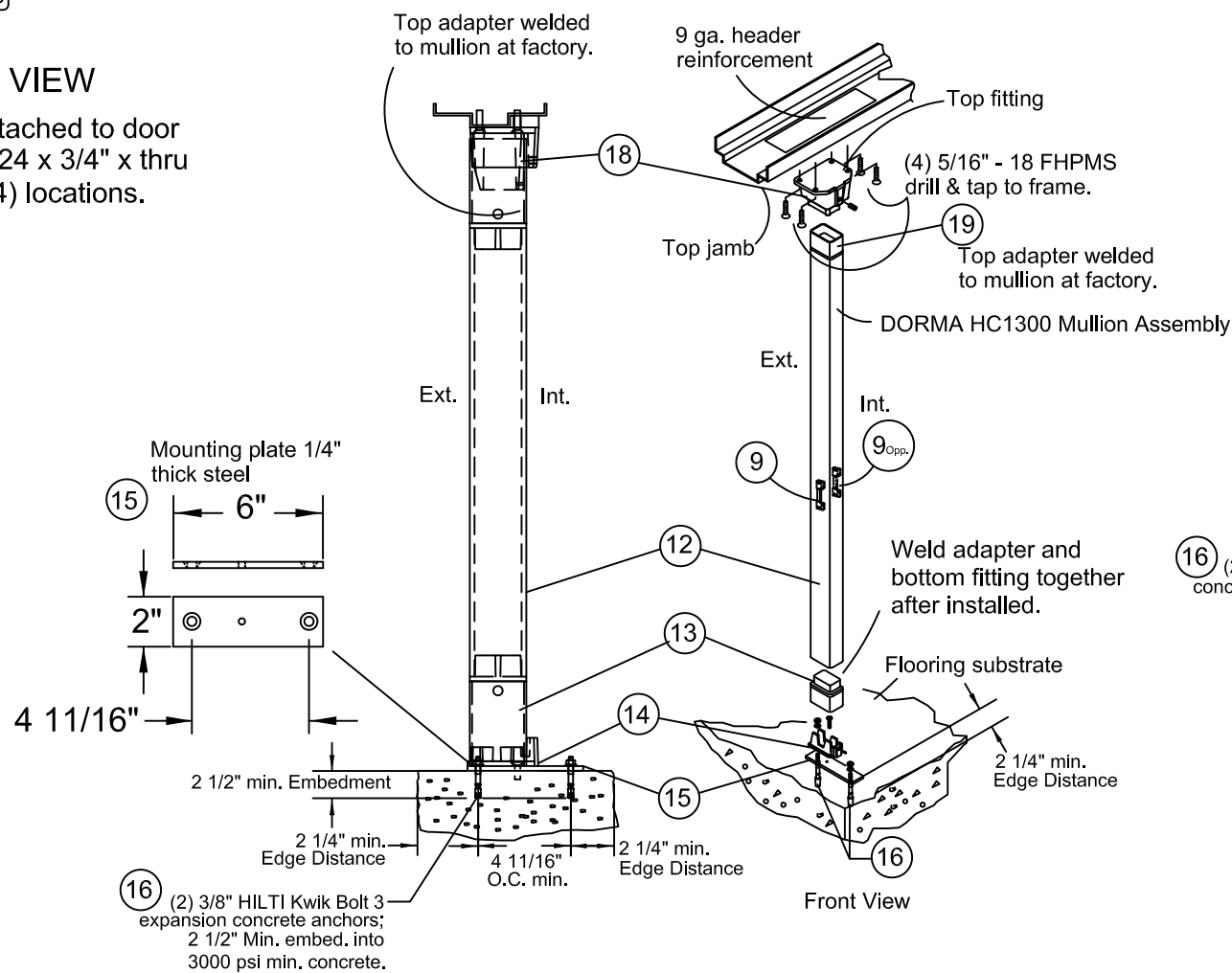
DORMA 9700/F9700 Narrow Stile Rim Panic Exit Devices w/wo DORMA HC1300 Mullion Application  
On Impact Flush Outswing Single And Pair Steel Doors Having Current NOA or Current HVHZ Florida State Approval



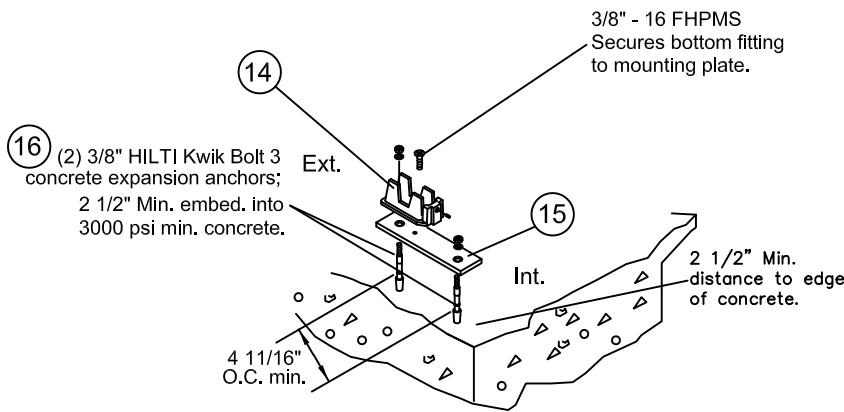
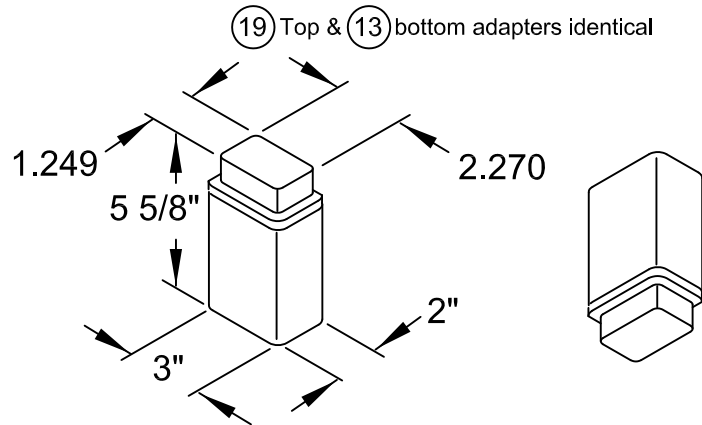
**ELEVATION VIEW**

(4) Mullion stablizers

Stabilizers attached to door using (2) 12-24 x 3/4" x thru bolts each, (4) locations.



Section C - C



Anchor detail

**GENERAL NOTES**

Limitations:

1. Device complies with FBC 2017 (6th Edition) and has been tested to TAS 201-94, 202-94 and 203-94.
2. Each device is approved to be used as an equal alternate in applicable 16 ga. (0.053" min.) frame and out swing 16 ga. (0.053" min.) commerical steel door holding a current NOA. Lowest design pressure rating of panic exit device or steel door shall control.
3. Device shall be installed on a approved 16 ga. (.053) commercial approved FBC core filled or honey comb steel door no larger than shown on this detail.
4. Steel reinforcement (by door mfg. required as indicated on the detail drawing in this set.)
5. Electrical devices are not part of this approval and must be reviewed by authority having jurisdiction in the area. (AHJ) Certifications: Underwriter's Laboratories - UL10C, UBC7-2 (1997) ANSI/BHMA A156.3 Grade 1 Exit device (2008) 3/4" latch bolt throw.

Frame - Steel 16 ga. (0.053" min.)  
Hinge reinforcements of 9 ga. (0.132" min) steel at ea. hinge location.  
14 ga. strike reinforcement in frame. Header reinforced by 10 ga. (0.132" min.) steel bar.

Door - Steel 16 ga. (0.053" min.) Lock and Hinge stiles and top and bottom rails reinforced with full length 16 ga. (0.053" min.) steel channel.  
Lock stiles reinforced by 14 ga. (0.071" min.) full length steel hardware reinforcement.  
Hinge Stiles reinforced by exit device reinforcement of 14 ga. (0.071" min.) at ea. location on hinge stiles.  
Closer reinforcement of 14 ga. (0.071" min.) steel at ea. closer hardware location as required.  
Hinge reinforcements of 9 ga. (0.132" min) steel at ea. hinge location  
Strikes, hinges, and header re-inforcement as required on detail drawing in this approval. All reinforcements to be spot welded or better by door manufacturer.

All dimensions in accordance with the manufacturer's standard installation instructions for Model DORMA 9700/F9700 Rim exit device. Outside trim may be one of following models: ZODT, ZP25, ZP02, ZP03/04, ZP11/12, ZK08/09, ZR23, ZT23, ZC23, ZG23, ZR08/09, ZT08/09, ZC08/09, OR ZG08/09.

Thru bolts must be used on all installations as shown. Inter-locking strike angle must be installed by latches as shown.

All fasteners and associated hardware shall be corrosion resistant in compliance with HVHZ material protection sections of the FBC.

Bill of material for DORMA 9700 x DORMA HC1300 x DORMA 9700 hardware only.

Building Drops, Inc.  
398 E. Dania Beach Blvd.  
Dania Beach, FL 33004  
FBPE Cert. of Authorization No. 29578

Professional Engineer  
Hermes E. Norero, P.E.  
Florida PE No. 73778

DESCRIPTION: DORMA 9700 Rim Exit Device on 16 ga. flush steel doors.	<b>dormakaba</b>			
dormakaba USA. 6161 E 75TH ST INDIANAPOLIS, IN 46250				
SCALE: None	DRAWN BY: FM	DATE: 10/23/17	CHKD BY: DC	DATE: 11/2/11

6th Edition FBC Update	3	FM	10-23-17
5th Edition FBC Update	2	LS	6-16-15
Rev. Per Dade Letter 10/31/11	1	TA	11-1-2011
REVISIONS	NO.	BY	DATE
Sheet 3 of 3			
DWG. NO.		9700-1	