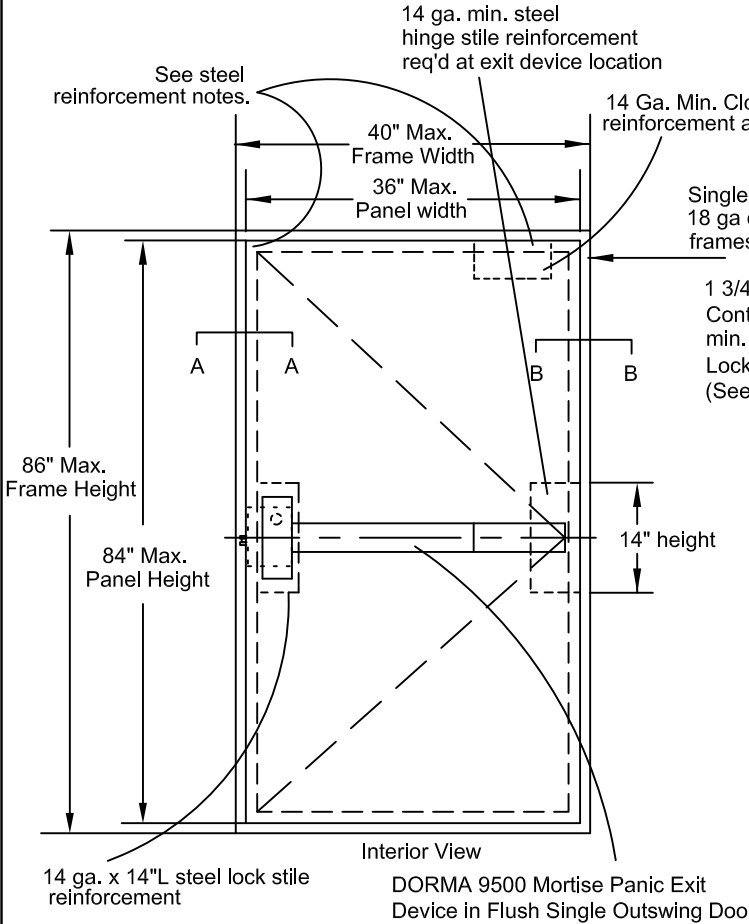
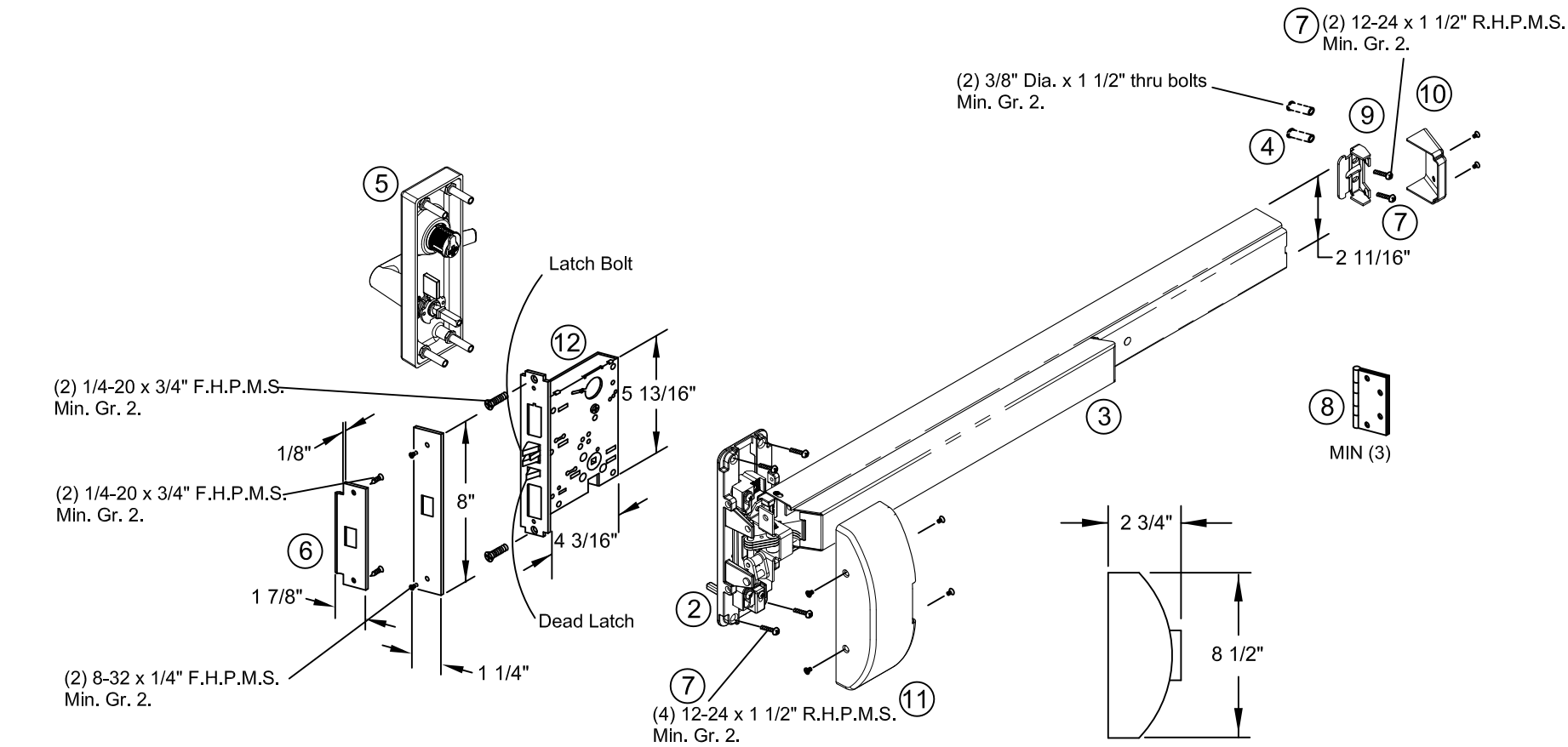


DORMA 9500/F9500 Mortise Exit Device			
Bill of material per device			
Item	Description	Pt. No.	Qty.
1	Approved 18 ga door and 16 ga frame	Under sep. NOA.	1
2	DORMA 9500 Chassis	Aluminum	1
3	Touch bar and rail assy.		1
4	Thru bolts (Steel)		2-6
5	Outside trim assembly	See trim notes	1
6	Strike (11ga. CR steel) W/ (2) 1/2"-20 x 3/4" FHPMS	Model# 95HC	1
7	12-24 x 1 1/2" PHRHMS	Steel	6
8	Hinges (Steel) (Min. 3)	Part of sep. NOA.	3
9	End cap bracket (Steel)		1
10	End cap (Stainless)		1
11	Chassis cover (Stainless)		1
12	Mortise lock body (Steel)		1
13	Louver inserts	Part of sep. NOA	1
14	Core complying with FBC	Part of sep. NOA	-
15	Face Plate		1
	Door & Frame Reinforcements	See Gen. Notes	

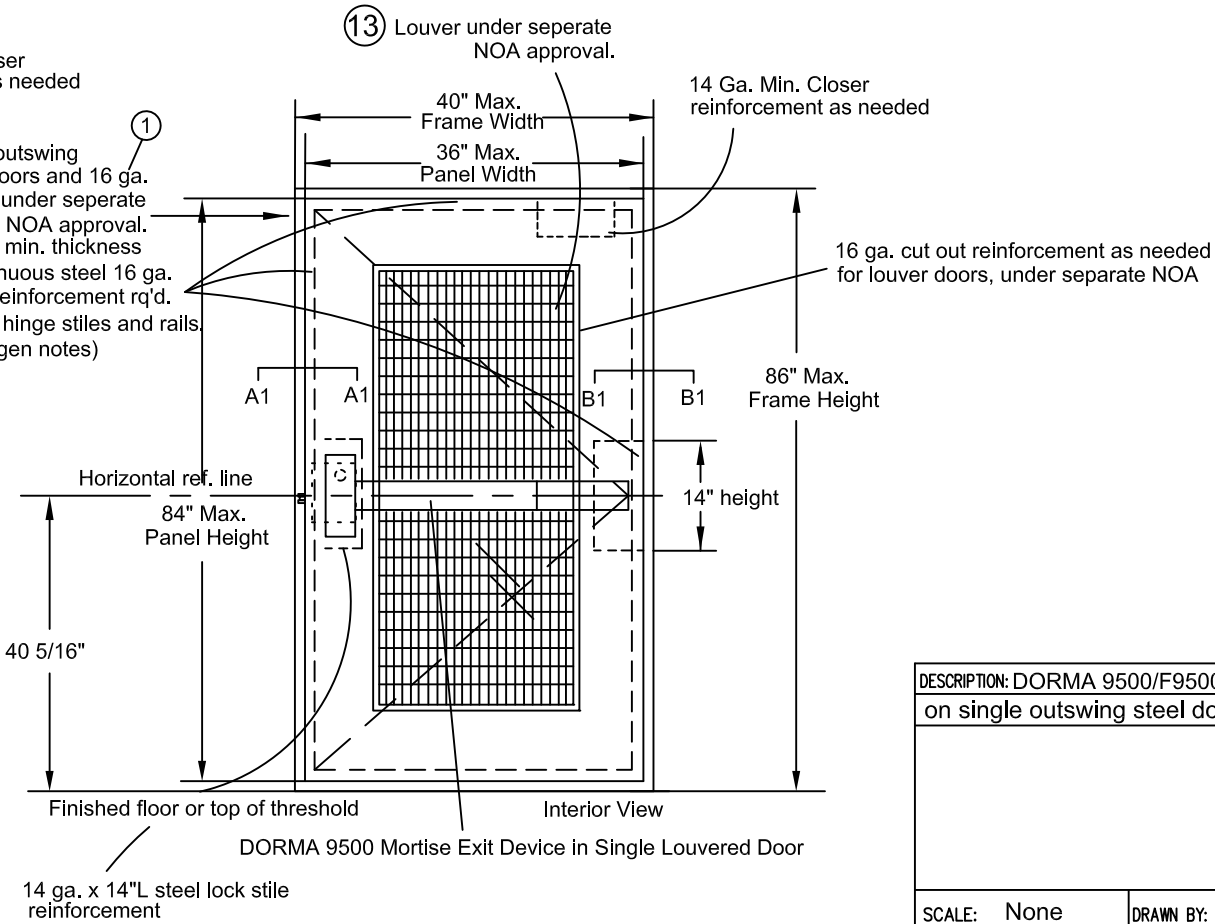
DORMA 9500/F9500 Mortise Panic Exit Device Component Approval (Where Air & Water Infiltration Ratings are <u>not</u> needed.)	
Design Pressure - Single Outswing Door Application	
Positive	60 PSF
Negative	60 PSF



DORMA 9500/F9500 Series Mortise Panic Exit Device (Component) Application
On Impact Single (Flush or Louvered) Outswing
Steel Doors Having Current NOA or Current HVHZ Florida State Approval



DORMA 9500/F9500 Mortise Panic Exit Device (Component Approval)



GENERAL NOTES

Limitations:


- Device complies with FBC 2017 (6th Edition) and has been tested to TAS 201-94, 202-94 and 203-94.
- This component device is approved to be used as an equal alternate locking device in applicable 16 ga. (0.053" min. with F'ymin=48,5 ksi) frame and outswing 18 ga. (0.045" min.) commercial steel door holding a current NOA. Lowest design pressure rating applies.
- Steel reinforcement by door mfg. (required as indicated on the detail drawing in this set.)
- Electrical devices and fire rating are not part of this approval and must be reviewed by authority having jurisdiction in the area. (AHJ)

Certifications:

Underwriter's Laboratories - UL10C, UBC7-2 (1997)
ANSI/BHMA A156.3 Grade 1 Exit device
3/4" latch bolt throw with dead latch.
Frame - Steel 16 ga. (0.053" min.)
Hinge reinforcements of 9 ga. (0.132" min) steel at ea. hinge location
Frame Strike 14 ga. steel (0.071" min.) reinforcement
Door - Steel Skin 18 ga. (0.045" min.). Lock and Hinge stiles and top and bottom rails reinforced with full length 16 ga. (0.053" min.) steel channel. Cut out reinforcement of 16 ga. (0.053" min.) steel channel applicable to louver kit only.
Lock & Hinge stiles reinforced by 14 ga. steel (0.071" min.), 14" length, reinforcement at exit device location.
Closer reinforcement of 14 ga. (0.071" min.) steel at ea. closer hardware location as required.
Hinge reinforcements of 9 ga. (0.132" min) steel at ea. hinge location.
Strikes, hinges, and header reinforcement as required on detail drawing.
All reinforcements to be spot welded or better by door manufacturer.
All dimensions in accordance with the manufacturer's standard installation instructions for Model DORMA 9500 series mortise panic device.
Outside trim may be one of following models: YODT, Y*25, YP02, YP03/04, YP11/12, Y*08/09, Y*23.
Thru bolts (Item #4) must be used on all installations as shown.

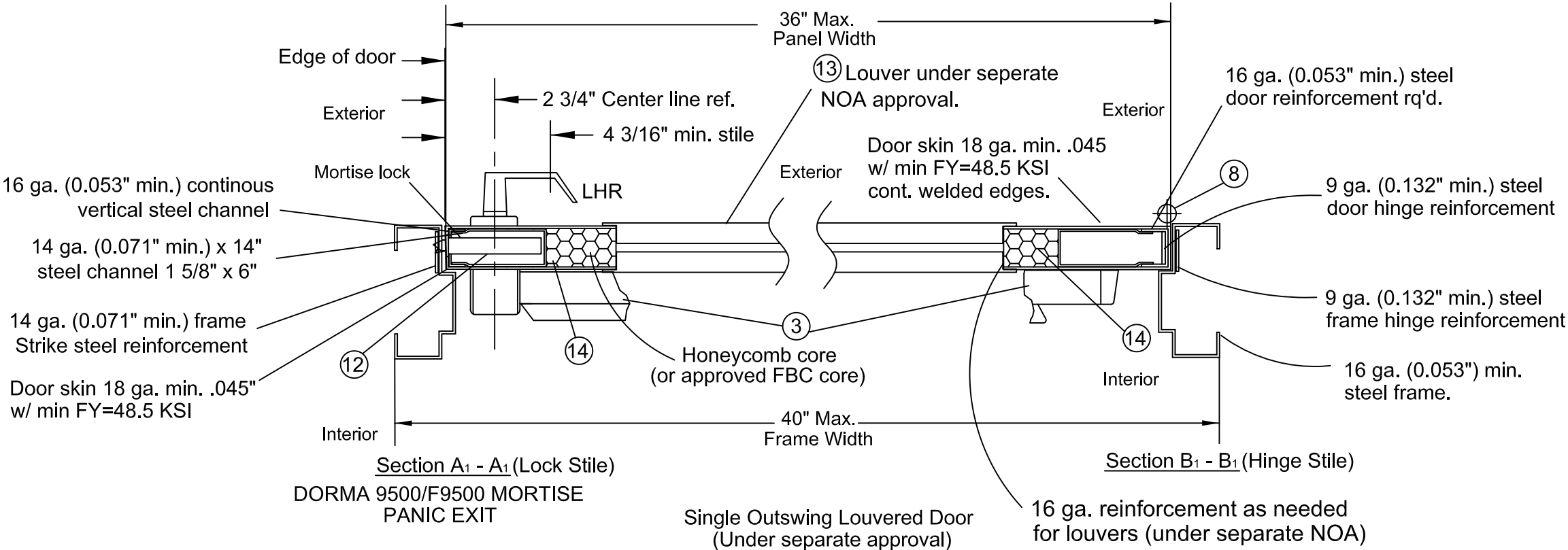
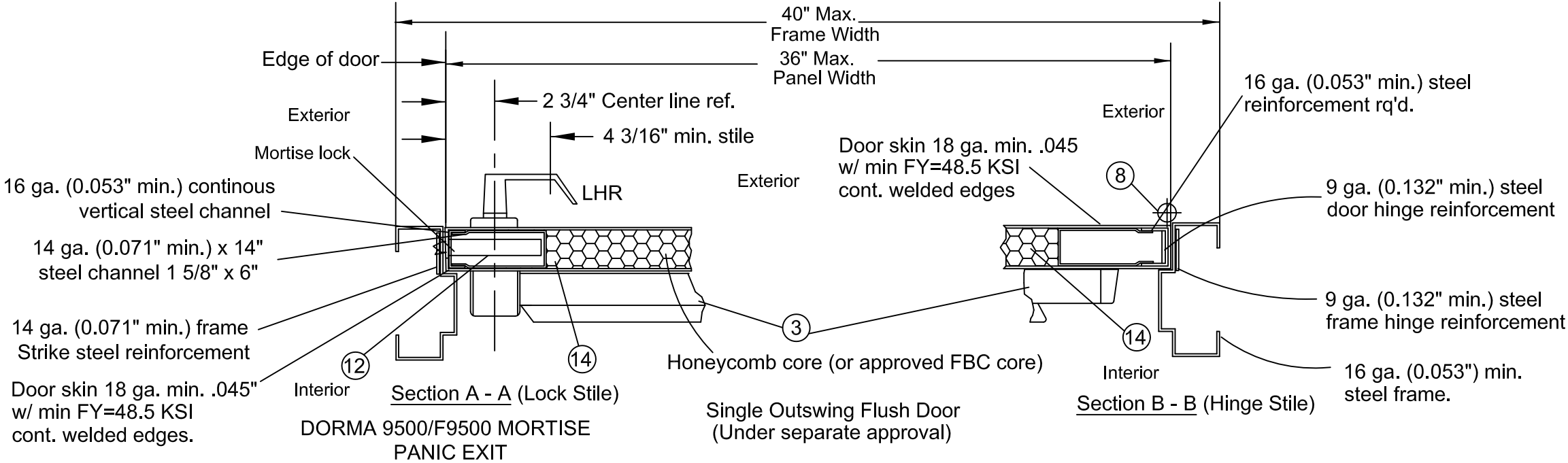
Building Drops, Inc.
398 E. Dania Beach Blvd.
Dania Beach, FL 33004
FBPE Cert. of Authorization No. 29578

Hermes F. Norero, P.E.
Florida PE No. 73778

DESCRIPTION: DORMA 9500/F9500 Mortise Panic Exit Device on single outswing steel doors (flush or louvered).			 dormakaba USA. 6161 E 75TH ST INDIANAPOLIS, IN 46250	
SCALE: None	DRAWN BY: FM	DATE: 10-23-17	CHKD BY: SM	DATE: 7/23/14

6th Edition FBC Update	4	FM	10-23-17
5th Edition FBC Update	3	LS	6-16-15
Revise per MD	2	MS	12/3/14
Revise notes	1	TA	7/23/14
REVISIONS		NO.	BY DATE
Sheet 1 of 2		9500-1	
DWG. NO.			

DORMA 9500/F9500 Series Mortise Panic Exit Device (Component) Application
On Impact Single (Flush or Louvered) Outswing
Steel Doors Having Current NOA or Current HVHZ Florida State Approval



GENERAL NOTES

- Limitations:
1. Device complies with FBC 2017 (6th Edition) and has been tested to TAS 201-94, 202-94 and 203-94.
 2. This component device is approved to be used as an equal alternate locking device in applicable 16 ga. (0.053" min. with F'ymin=48.5 ksi) frame and outswing 18 ga. (0.045" min.) commercial steel door holding a current NOA. Lowest design pressure rating applies.
 3. Steel reinforcement by door mfg. (required as indicated on the detail drawing in this set.)
 4. Electrical devices and fire rating are not part of this approval and must be reviewed by authority having jurisdiction in the area. (AHJ)
- Certifications:
- Underwriter's Laboratories - UL10C, UBC7-2 (1997)
ANSI/BHMA A156.3 Grade 1 Exit device
3/4" latch bolt throw with dead latch.
Frame - Steel 16 ga. (0.053" min.)
Hinge reinforcements of 9 ga. (0.132" min) steel at ea. hinge location
Frame Strike 14 ga. steel (0.071" min.) reinforcement
Door - Steel Skin 18 ga. (0.045" min.). Lock and Hinge stiles and top and bottom rails reinforced with full length 16 ga. (0.053" min.) steel channel.
Cut out reinforcement of 16 ga. (0.053" min.) steel channel applicable to louver kit only.
Lock & Hinge stiles reinforced by 14 ga. steel (0.071" min.), 14" length, reinforcement at exit device location.
Closer reinforcement of 14 ga. (0.071" min.) steel at ea. closer hardware location as required.
Hinge reinforcements of 9 ga. (0.132" min) steel at ea. hinge location.
Strikes, hinges, and header reinforcement as required on detail drawing.
All reinforcements to be spot welded or better by door manufacturer.
All dimensions in accordance with the manufacturer's standard installation instructions for Model DORMA 9500 series mortise panic device.
Outside trim may be one of following models: YODT, Y*25, YP02, YP03/04, YP11/12, Y*08/09, Y*23.
Thru bolts (Item #4) must be used on all installations as shown.



DORMA 9500/F9500 Mortise Panic Exit Device - Component Approval (Where Air & Water Infiltration Ratings are <u>not</u> needed.)	
Design Pressure - Single Outswing Door Application	
Positive	60 PSF
Negative	60 PSF

DESCRIPTION: DORMA 9500/F9500 Mortise Panic Exit Device on single outswing steel doors (flush or louvered).			<div>dormakaba</div> <div>dormakaba USA. 6161 E 75TH ST INDIANAPOLIS, IN 46250</div>		6th Edition FBC Update		4	FM	10-23-17
					5th Edition FBC Update		3	LS	6-16-15
Revise per MD		2			MS	12/3/14			
Revise notes		1			TA	7/23/14			
REVISIONS		NO.			BY	DATE			
Sheet 2 of 2		9500-1							
SCALE: None	DRAWN BY: FM	DATE: 10-23-17	CHKD BY: SM	DATE: 7/23/14	DWG. NO.				