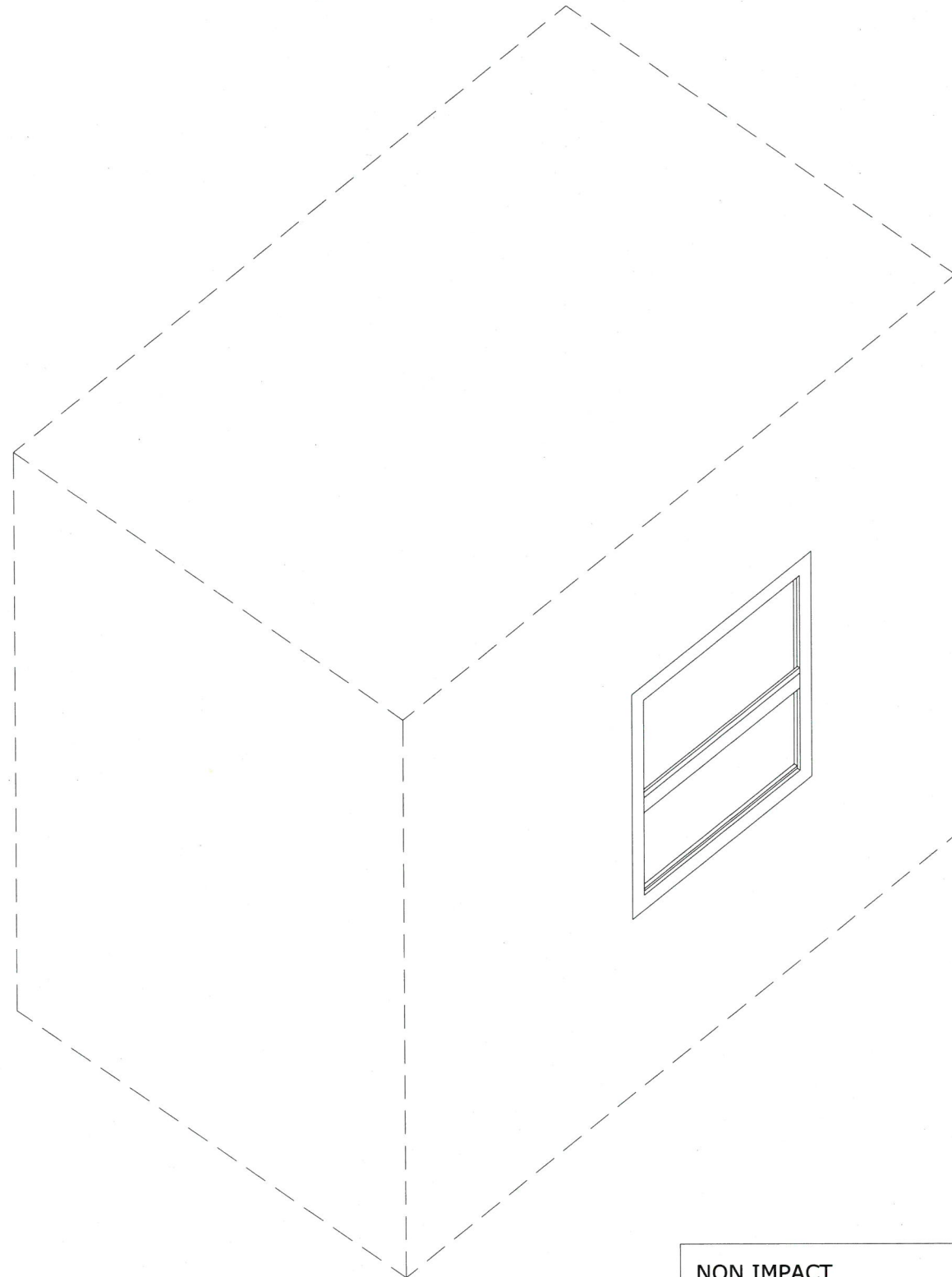


# APPLE FASTENERS INC. SERIES STORAGE SHED SINGLE HUNG WINDOW (NON-IMPACT)



NON IMPACT  
NOT APPROVED FOR USE IN HVHZ

## GENERAL NOTES

1. THE SYSTEM DESCRIBED HEREIN HAS BEEN DESIGNED AND TESTED IN ACCORDANCE WITH THE FLORIDA BUILDING CODE (2017) 6th EDITION & ASTM E1300-09.
2. NO 33-1/3% INCREASE IN ALLOWABLE STRESS HAS BEEN USED IN THE DESIGN OF THIS SYSTEM. WIND LOAD DURATION FACTOR Cd=1.6 HAS BEEN USED FOR WOOD ANCHOR DESIGN.
3. POSITIVE AND NEGATIVE DESIGN PRESSURES CALCULATED FOR USE WITH THIS SYSTEM SHALL BE DETERMINED BY OTHERS ON A JOB-SPECIFIC BASIS IN ACCORDANCE WITH THE GOVERNING CODE. SITE SPECIFIC LOAD WIND LOAD REQUIREMENTS SHALL BE DETERMINED IN ACCORDANCE WITH ASCE 7-10 AND THE FLORIDA BUILDING CODE (2017) 6TH EDITION FOR CATEGORY 1 BUILDINGS BY SEPARATE ENGINEERING CERTIFICATION AND SHALL BE LESS THAN OR EQUAL TO THE POSITIVE OR NEGATIVE DESIGN PRESSURE CAPACITY VALUE LISTED HEREIN FOR ANY ASSEMBLY WITHIN THE LIMITATIONS STATED HEREIN.
4. THE SYSTEM DETAILED HEREIN IS GENERIC AND DOES NOT PROVIDE INFORMATION FOR A SPECIFIC SITE. FOR SITE CONDITIONS DIFFERENT FROM THE CONDITIONS DETAILED HEREIN, A LICENSED ENGINEER OR REGISTERED ARCHITECT SHALL PREPARE SITE SPECIFIC DOCUMENTS FOR USE IN CONJUNCTION WITH THIS DOCUMENT.
5. PERMIT HOLDER SHALL VERIFY THE ADEQUACY OF THE EXISTING STRUCTURE TO WITHSTAND SUPERIMPOSED LOADS. WOOD BUCKS (BY OTHERS) SHALL BE ANCHORED PROPERLY TO TRANSFER LOADS TO THE EXISTING STRUCTURE.
6. ALL EXTRUSIONS SHALL BE 6063-T6 ALUMINUM ALLOY, UNLESS NOTED OTHERWISE.
7. EXTERIOR SEAM OF FRAME CORNERS, INSTALLATION SCREWS, AND GLAZING BEAD ENDS SHALL BE SEALED WITH SILICONE.
8. ALL BOLTS & WASHERS SHALL BE ZINC COATED STEEL, GALVANIZED STEEL, OR STAINLESS STEEL WITH A MINIMUM TENSILE YIELD STRENGTH OF 60 KSI.
9. ALL DISSIMILAR MATERIALS SHALL BE PAINTED OR PLATED AS PRESCRIBED IN THE FLORIDA BUILDING CODE.
10. ENGINEER SEAL AFFIXED HERE TO VALIDATES STRUCTURAL DESIGN AS SHOWN ONLY. USE OF THIS SPECIFICATION BY CONTRACTOR, et. al. INDEMNIFIES & SAVES HARMLESS THIS ENGINEER FOR ALL COST & DAMAGES INCLUDING LEGAL FEES & APPELLATE FEES RESULTING FROM MATERIAL FABRICATION, SYSTEM ERECTION, & CONSTRUCTION PRACTICES BEYOND THAT WHICH IS CALLED FOR BY LOCAL, STATE, & FEDERAL CODES & FROM DEVIATIONS OF THIS PLAN.
13. EXCEPT AS EXPRESSLY PROVIDED HEREIN, NO ADDITIONAL CERTIFICATIONS OR AFFIRMATIONS ARE INTENDED.
14. ALTERATIONS, ADDITIONS, OR OTHER MARKINGS TO THIS DOCUMENT ARE NOT PERMITTED AND INVALIDATE THIS CERTIFICATION.
15. ANY SAFEGUARDS OR MEANS OF EGRESS SHALL BE OBSERVED AND ARE NOT IN THIS CERTIFICATION.
16. THIS DOCUMENT DOES NOT ADDRESS ANY ENERGY EFFICIENCY RATING OF THE PRODUCTS.

ARCHITECTURAL TESTING INC. LAB REPORT NUMBER D9979.01-109-44

### SHEET INDEX

# SHEET	DESCRIPTION
1	COVER SHEET
2	ELEVATION
3	DETAILS
4	PARTS LIST
4	TOTAL

FL 21990.1-R0

FRANK L. BENNARDO, P.E.  
PE# 0046549

06/20/2018

**ENGINEERING EXPRESS®**  
CORPORATE OFFICE:  
160 SW 12th AVE, SUITE 106  
DEERFIELD BEACH, FL 33442  
P: (954) 354-0660 F: (954) 354-0443  
E: HELLO@ENGINEERINGEXPRESS.COM  
ENGINEERINGEXPRESS.COM  
CERT OF AUTH #9885

**APPLE FASTENERS INC.**  
2850 APPLETON STREET  
CAMP HILL, PENNSYLVANIA  
(717) 945-6331

STORAGE SHED SINGLE HUNG WINDOW

REMARKS	DRWN	CHKD	DATE
INIT ISSUE	JEM	AJP	06/20/17

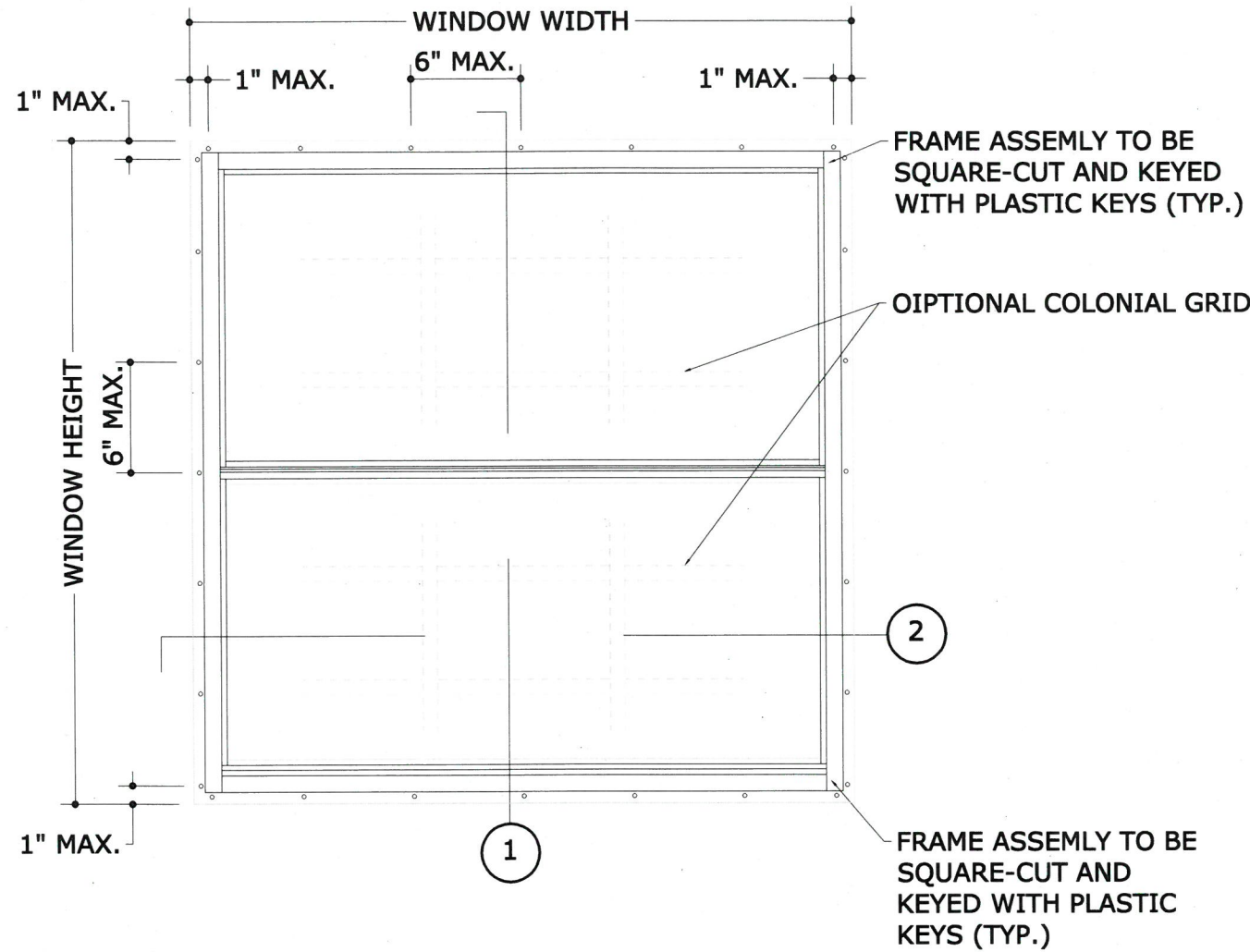
THIS DOCUMENT IS THE PROPERTY OF ENGINEERING EXPRESS AND SHALL NOT BE REPRODUCED IN WHOLE OR PART WITHOUT WRITTEN CONSENT OF ENGINEERING EXPRESS. ALTERATIONS, ADDITIONS, OR OTHER MARKINGS TO THIS DOCUMENT ARE NOT PERMITTED AND INVALIDATE OUR CERTIFICATION.

COPYRIGHT ENGINEERING EXPRESS®

18-6344

SCALE: NTS UNLESS NOTED

OF 4  
1

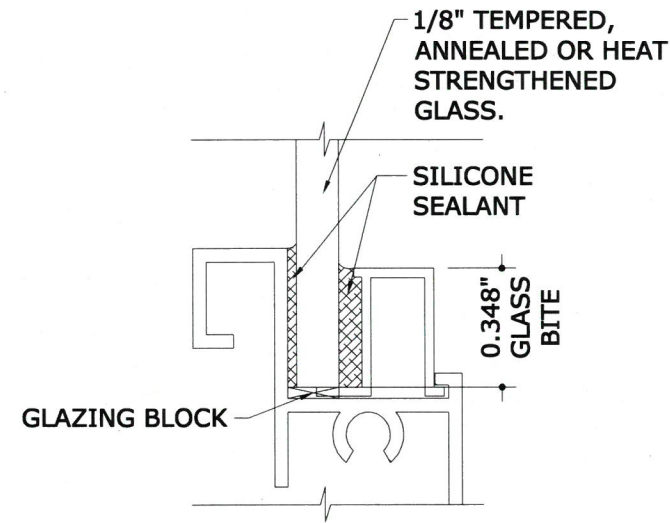


WINDOW ELEVATION INTO WOOD

**ANCHOR SCHEDULE**

#8x 1 5/8" LONG HEX HEAD SCREWS LOCATED AT 1" MAX. FROM CORNERS AND 6" MAX. FOR THE BALANCE INTO WOOD (SYP#2 MIN.) WITH 1 1/4" MIN. PENETRATION AND 3/4" MIN. EDGE DISTANCE.

○ DENOTES ANCHOR LOCATION



GLAZING TYP "A"

N.T.S

**LOADING CHART FOR SINGLE HUNG WINDOW - PRESSURES IN P.S.F. (ASD)**

WINDOW WIDTH (in.)	WINDOW HEIGHT (in.)													
	12		18		24		30		36		42		48	
	W	S	W	S	W	S	W	S	W	S	W	S	W	S
12	20	-60	20	-60	20	-60	20	-60	20	-41	20	-30	20	-22
18	20	-60	20	-40	20	-40	20	-40	20	-29	20	-20	20	-15
24	20	-60	20	-40	20	-30	20	-30	20	-23	20	-16	20	-12
30	20	-60	20	-40	20	-30	20	-24	20	-20	20	-14	-	-
36	20	-60	20	-40	20	-30	20	-24	20	-20	-	-	-	-



06/20/2018

**ENGINEERING EXPRESS®**  
 CORPORATE OFFICE:  
 160 SW 12th AVE, SUITE 106  
 DEERFIELD BEACH, FL 33442  
 P: (954) 354-0660 F: (954) 354-0443  
 E: HELLO@ENGINEERINGEXPRESS.COM  
 ENGINEERINGEXPRESS.COM  
 CERT OF AUTH #9885

**APPLE FASTENERS INC.**  
 2850 APPLETON STREET  
 CAMP HILL, PENNSYLVANIA  
 (717) 945-6331

STORAGE SHED SINGLE HUNG WINDOW

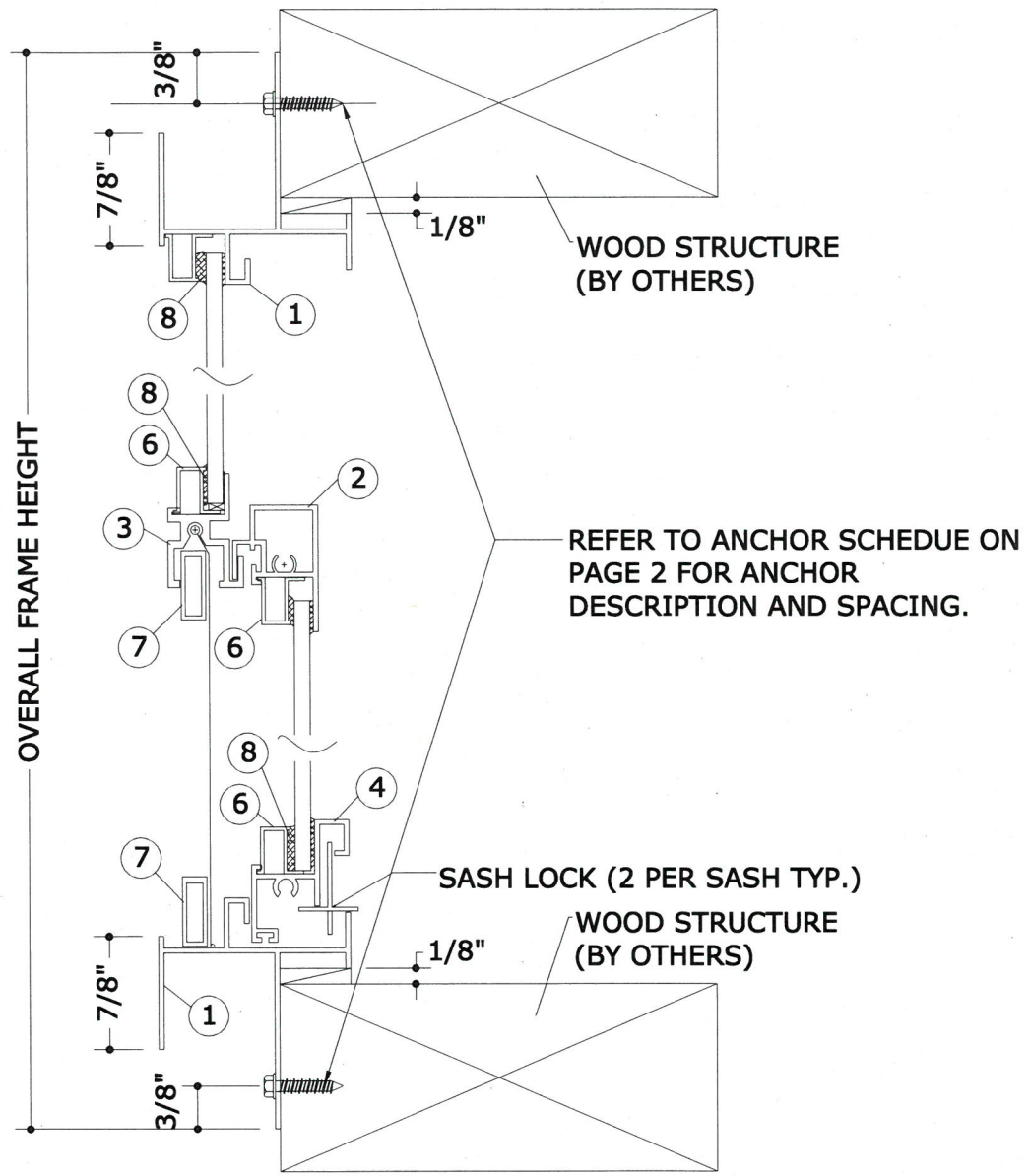
REMARKS	DRWN	CHKD	DATE
INIT ISSUE	JEM	AJP	06/20/17

THIS DOCUMENT IS THE PROPERTY OF ENGINEERING EXPRESS AND SHALL NOT BE REPRODUCED IN WHOLE OR PART WITHOUT WRITTEN CONSENT OF ENGINEERING EXPRESS. ALTERATIONS, ADDITIONS, OR OTHER MARKINGS TO THIS DOCUMENT ARE NOT PERMITTED AND INVALIDATE OUR CERTIFICATION.

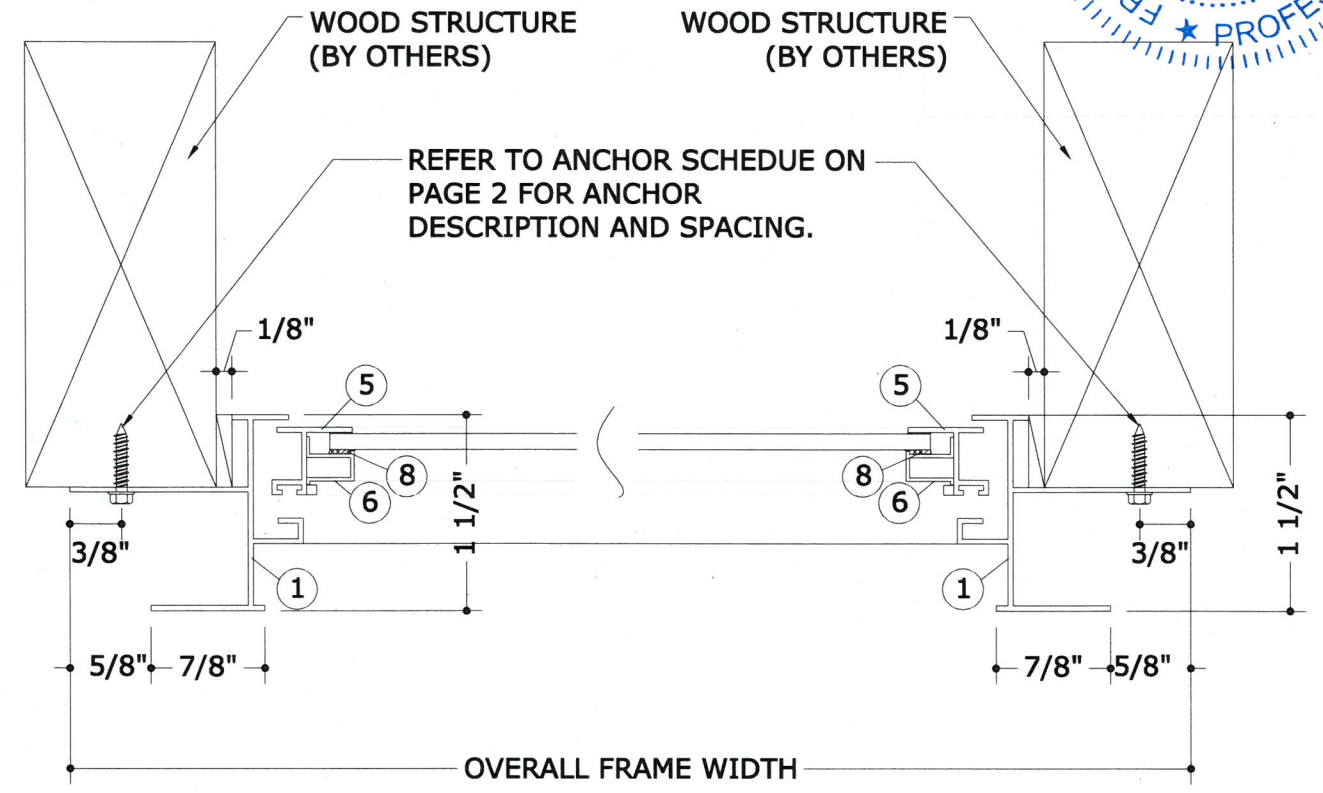
COPYRIGHT ENGINEERING EXPRESS®

18-6344

SCALE: NTS UNLESS NOTED



**1** VERTICAL WINDOW SECTION



**2** HORIZONTAL WINDOW SECTION

WOOD BUCKS MUST SUSTAIN LOADS IMPOSED BY GLAZING SYSTEM AND TRANSFER THEM TO THE BUILDING STRUCTURE.



FRANK L. BENNARDO, P.E.  
PE# 0046549

06/20/2018

**ENGINEERING EXPRESS®**  
CORPORATE OFFICE:  
160 SW 12th AVE, SUITE 106  
DEERFIELD BEACH, FL 33442  
P: (954) 354-0660 F: (954) 354-0443  
E: HELLO@ENGINEERINGEXPRESS.COM  
ENGINEERINGEXPRESS.COM  
CERT OF AUTH #9885

**APPLE FASTENERS INC.**  
2850 APPLETON STREET  
CAMP HILL, PENNSYLVANIA  
(717) 945-6331

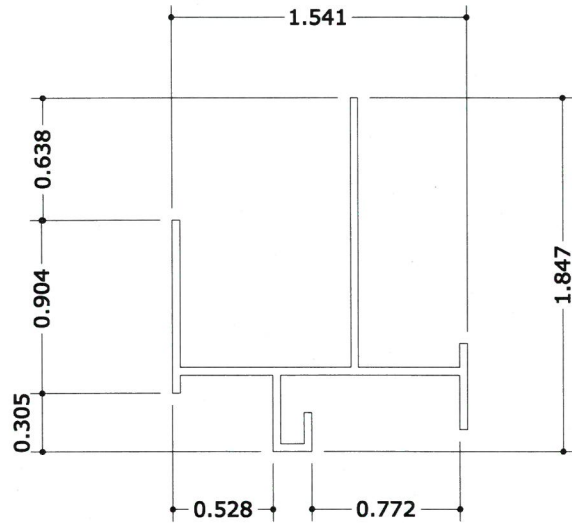
STORAGE SHED SINGLE HUNG WINDOW

REMARKS	DRWN	CHKD	DATE
INIT ISSUE	JEM	AJP	06/20/17

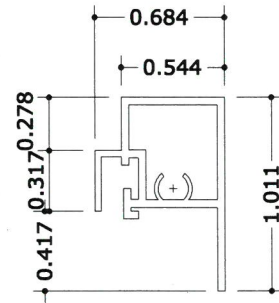
THIS DOCUMENT IS THE PROPERTY OF ENGINEERING EXPRESS AND SHALL NOT BE REPRODUCED IN WHOLE OR PART WITHOUT WRITTEN CONSENT OF ENGINEERING EXPRESS. ALTERATIONS, ADDITIONS, OR OTHER MARKINGS TO THIS DOCUMENT ARE NOT PERMITTED AND INVALIDATE OUR CERTIFICATION.

COPYRIGHT ENGINEERING EXPRESS®

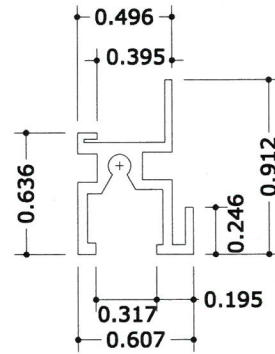
18-6344  
SCALE: NTS UNLESS NOTED



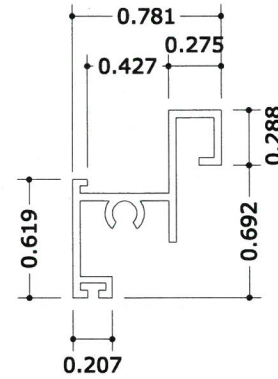
① FRAME HEAD / JAMB / SILL



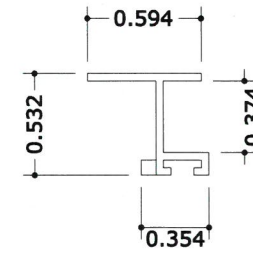
② SASH HEAD



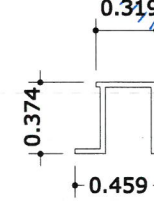
③ FIXED LITE SILL



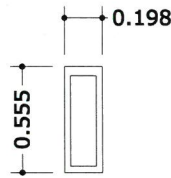
④ SASH SILL



⑤ SASH JAMB



⑥ GLASS STOP



⑦ SCREEN STOP

**BILL OF MATERIALS**

ITEM	DESCRIPTION	MATERIAL	MANUFACTURER
①	WINDOW FRAME - HEAD/JAMB/SILL	ALUM. -6063-T6	APPLE FASTENERS NORTHEAST INT., LTD.
②	WINDOW SASH HEAD	ALUM. -6063-T6	APPLE FASTENERS NORTHEAST INT., LTD.
③	FIXED LITE SILL	ALUM. -6063-T6	APPLE FASTENERS NORTHEAST INT., LTD.
④	SASH SILL	ALUM. -6063-T6	APPLE FASTENERS NORTHEAST INT., LTD.
⑤	SASH JAMB	ALUM. -6063-T6	APPLE FASTENERS NORTHEAST INT., LTD.
⑥	GLASS STOP	PVC	APPLE FASTENERS NORTHEAST INT., LTD.
⑦	SCREEN STOP	PVC	APPLE FASTENERS NORTHEAST INT., LTD.
⑧	GLAZING SEALANT	SILICONE	
⑨	85± 5 SHORE A DUROMETER BLOCKS CENTERED AT 1/4 POINTS WITH LENGTH DEPENDENT ON GLASS AREA		



FRANK L. BENNARDO, P.E.  
PE# 0046549  
06/20/2018

**ENGINEERING EXPRESS®**  
CORPORATE OFFICE:  
160 SW 12th AVE, SUITE 106  
DEERFIELD BEACH, FL 33442  
P: (954) 354-0660 F: (954) 354-0443  
E: HELLO@ENGINEERINGEXPRESS.COM  
ENGINEERINGEXPRESS.COM  
CERT OF AUTH #9885

**APPLE FASTENERS INC.**  
2850 APPLETON STREET  
CAMP HILL, PENNSYLVANIA  
(717) 945-6331  
STORAGE SHED SINGLE HUNG WINDOW

REMARKS	DRWN	CHKD	DATE
INIT ISSUE	JEM	AJP	06/20/17

THIS DOCUMENT IS THE PROPERTY OF ENGINEERING EXPRESS AND SHALL NOT BE REPRODUCED IN WHOLE OR PART WITHOUT WRITTEN CONSENT OF ENGINEERING EXPRESS. ALTERATIONS, ADDITIONS, OR OTHER MARKINGS TO THIS DOCUMENT ARE NOT PERMITTED AND INVALIDATE OUR CERTIFICATION.

COPYRIGHT ENGINEERING EXPRESS®  
**18-6344**  
SCALE: NTS UNLESS NOTED  
OF 4  
**4**