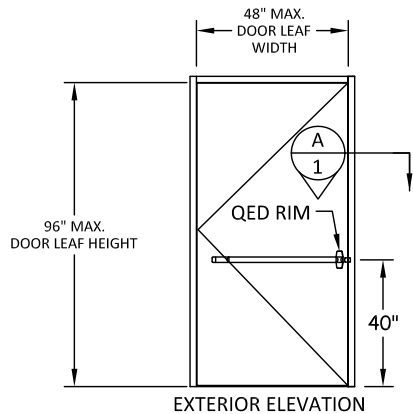
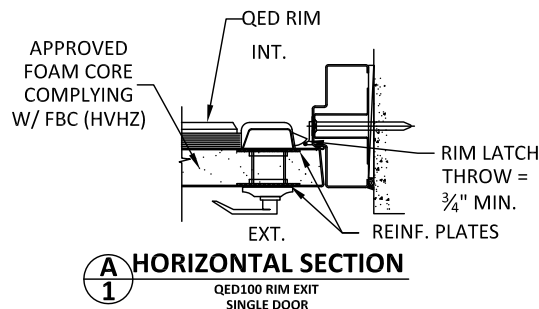


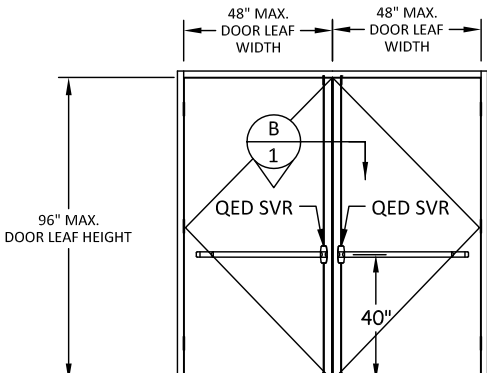
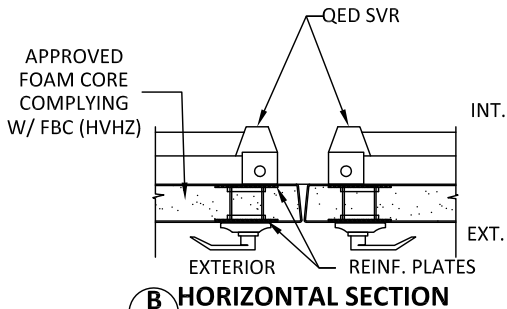
dormakaba USA, Inc.

STANLEY COMMERCIAL HARDWARE SERIES

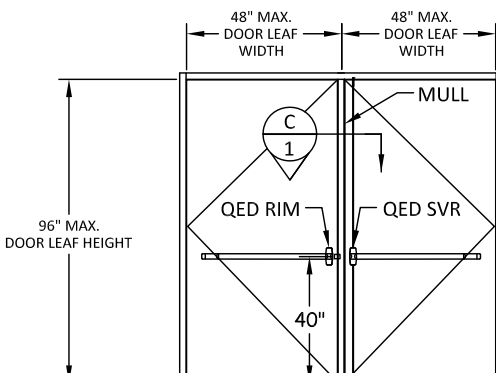
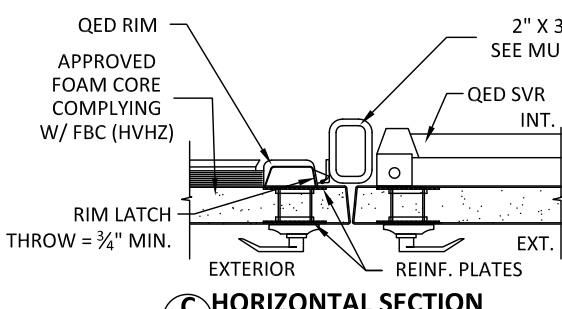
QED 100RIM & QED 100SVR PANIC EXIT DEVICE



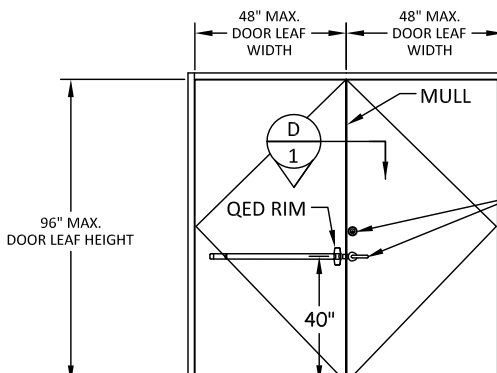
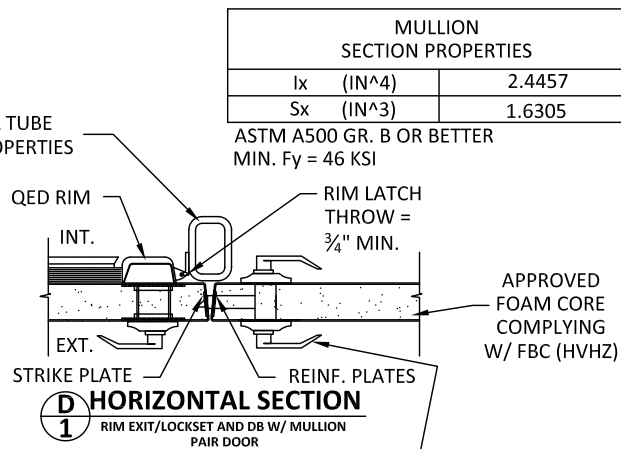
OUTSWING SINGLE STEEL DOOR
DOORS UNDER SEPARATE APPROVAL
QED100 SERIES RIM EXIT DEVICE



OUTSWING SINGLE OR PAIR STEEL DOOR
DOORS UNDER SEPARATE APPROVAL
QED100 SERIES SURFACE VERTICAL ROD (SVR) EXIT DEVICE



TWO OUTSWING SINGLE STEEL DOORS WITH INTERMEDIATE MULLION
DOORS UNDER SEPARATE APPROVAL



dormakaba USA Inc. QCL & QTL SERIES
LEVER W/ QDB SERIES
DEADBOLT LOCKS UNDER
SEPARATE NOA APPROVAL

SEE DOOR/MULLION NOA FOR CONSTRUCTION,
DESIGN LOAD RATING AND INSTALLATION DETAILS.
SEE MIN. DOOR REQUIREMENTS IN GENERAL NOTES

MULLION SECTION PROPERTIES		
Ix	(IN^4)	2.4457
Sx	(IN^3)	1.6305

ASTM A500 GR. B OR BETTER
MIN. Fy = 46 KSI

DESIGN PRESSURE RATING	
QED RIM EXIT DEVICE	SHEET 3
QED SVR EXIT DEVICE	SHEET 4

TABLE OF CONTENTS		
SHEET	REVISION	SHEET DESCRIPTION
1	-	GENERAL NOTES, ELEVATIONS, AND SECTION VIEWS
2	-	ELEVATION & SECTION VIEWS (SINGLE DOOR)
3	-	QED 100 SERIES RIM EXIT DEVICE
4	-	QED 100 SERIES SURFACE VERTICAL ROD PANIC EXIT DEVICE

GENERAL NOTES:

- THIS PRODUCT HAS BEEN DESIGNED AND MANUFACTURED TO COMPLY WITH THE 6TH EDITION FLORIDA BUILDING CODE INCLUDING PROVISIONS SET FORTH FOR HIGH-VELOCITY HURRICANE ZONES (HVHZ).
- STRIKES, HINGES, AND ALL APPLICABLE REINFORCEMENTS AS REQUIRED ON DETAIL DRAWING IN THIS APPROVAL.
- LOCKING HARDWARE SHALL BE INSTALLED AS PER MANUFACTURER'S INSTALLATION INSTRUCTIONS.
- ALL FASTENERS AND ASSOCIATED HARDWARE MUST BE MADE OF CORROSION RESISTANT MATERIAL OR HAVE A CORROSION RESISTANT COATING.
- STEEL COMPONENTS SHALL BE COATED OR COMPLY WITH CORROSION RESISTANCE PROTECTION IN CONFORMANCE WITH THE MATERIAL PROTECTION PROVISIONS OF FBC SECTION 2220.
- TWO (2) SINGLE DOORS WITH CURRENT QUALIFIED MULLION NOA MAY BE USED SUCH THAT DEADBOLTS + LEVERSET ARE ENGAGED INTO THE OPPOSITE PANEL. THE OPPOSITE PANEL CONTAINING dormakaba USA Inc. QED RIM PANIC EXIT DEVICE HAVING CURRENT NOA MUST ENGAGE INTO THE MULLION. LOWEST DESIGN PRESSURE OF THE DOORS, LOCKING COMPONENT, PANIC EXIT, OR MULLION NOA(S) SHALL CONTROL.

LIMITATIONS OF USE:

- PANIC EXIT HARDWARE IS AN APPROVED COMPONENT TO BE USED AS AN EQUAL ALTERNATIVE TO THE CORRESPONDING APPROVED LOCKING DEVICES IN THE STEEL OUTSWING DOORS, HOLDING CURRENT NOW, AS FOLLOWS:
 - QED RIM EXIT & QED SVR CAN BE USED WITH 18 GA. (.045" MIN.) DOORS AND 16 GA. (.057" MIN.) FRAME JAMBS NO WIDER THAN 48" OR HIGHER THAN 96".
 - TWO (2) SINGLE DOORS USING APPROVED INTERMEDIATE MULLION (SEE MIN. SECTION PROPERTIES) CAN BE USED WITH QED RIM EXIT WITH BOTH DOORS OR QED RIM EXIT AND QED SVR OR QED RIM EXIT WITH dormakaba USA Inc. (LOCK/DEADBOLT) AT ALTERNATE DOOR SLABS.
 - QED SVR CAN BE USED WITH ANY APPROVED STEEL DOORS MEETING GENERAL SPECIFICATIONS.
 - THE LOWER DESIGN PRESSURE OF DOOR OR MULLION OR THE COMPONENT APPROVAL HEREIN SHALL CONTROL FOR ENTIRE ASSEMBLY.
- ELECTRICAL/ELECTRONIC FUNCTION AND INSTALLATION OTHER THAN SELF CONTAINED ELECTRONIC DEVICES ARE NOT PART OF THIS APPROVAL AND MUST BE REVIEWED BY AUTHORITY HAVING JURISDICTION(AHJ) IN THE AREA.
- COMPLIANCE WITH BUILDING EGRESS REQUIREMENTS TO BE REVIEWED BY BUILDING OFFICIAL.

dormakaba

dormakaba USA Inc.
6161 E. 75TH STREET
INDIANAPOLIS, IN 46250
PH: (317) 806-3288

TITLE: STANLEY COMMERCIAL HARDWARE
PANIC EXIT DEVICES

GENERAL NOTES, ELEVATION,
AND SECTION NOTES

PREPARED BY:

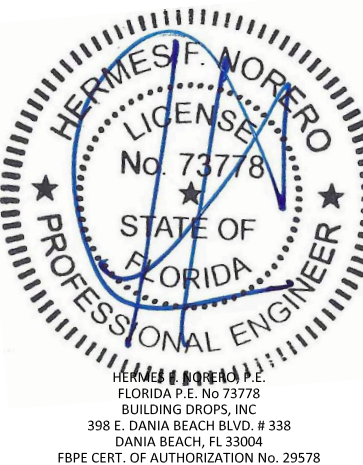
BUILDING DROPS, INC.

398 E. DANIA BEACH BLVD., STE. 338
DANIA BEACH, FL 33004
PH: (954)399-8478
FAX: (954)744-4738
WEB: www.buildingdrops.com



REMARKS	BY	DATE

THE INSTALLATION DETAILS DESCRIBED HEREIN ARE GENERIC
AND MAY NOT REFLECT ACTUAL CONDITIONS FOR A SPECIFIC
SITE. IF SITE CONDITIONS CAUSE INSTALLATION TO DEVIATE
FROM THE REQUIREMENTS DETAILED HEREIN, A LICENSED
ENGINEER OR ARCHITECT SHALL PREPARE SITE SPECIFIC
DOCUMENTS FOR USE WITH THIS DOCUMENT.



FL16202

DATE: 12.11.18

DWG. BY:
SM

CHK. BY:
HFN

SCALE: NTS

DWG. #: DOR004

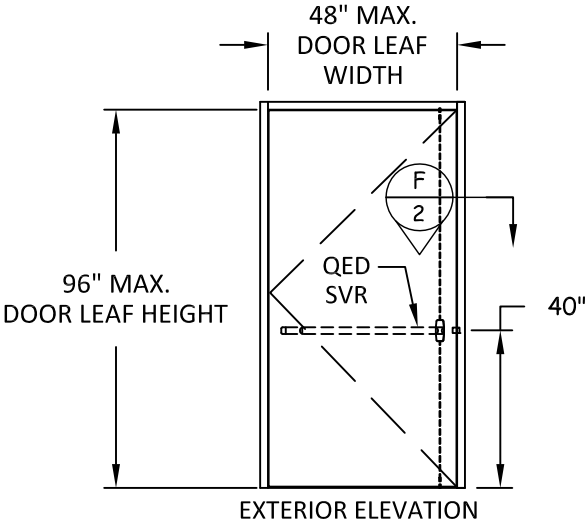
SHEET:

1

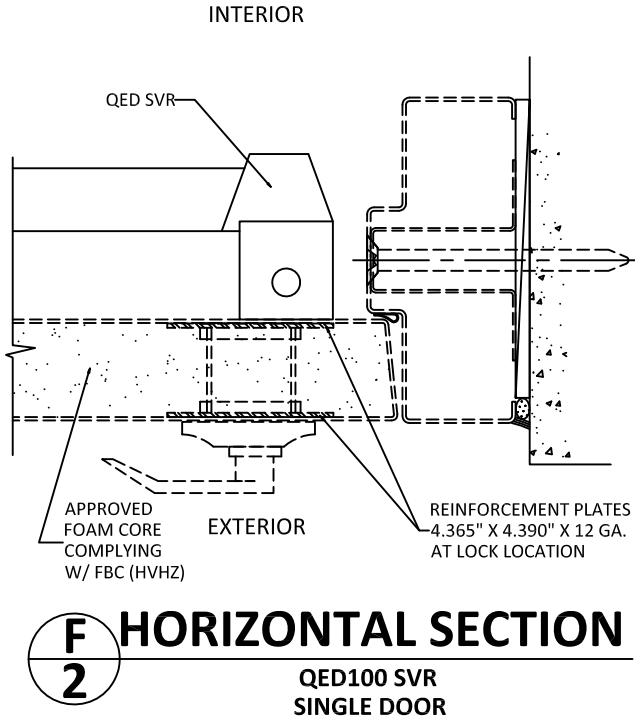
OF 4

s:\projects\dormakaba\loc-18-1134- 020096 and fl16202 (revision and name change)\dwg\16202 dor004 qed rim & svr.dwg 2/15/2019 4:59 PM

NOTE: SEE APPROVED DOOR UNDER SEPARATE CURRENT NOA FOR DOOR ASSEMBLY, INSTALLATION AND DESIGN PRESSURE RATINGS. LOWER DESIGN PRESSURE OF QED SVR OR DOOR SHALL CONTROL.



OUTSWING SINGLE STEEL DOOR
DOORS UNDER SEPARATE APPROVAL
QED100 SERIES SURFACE VERTICAL ROD EXIT DEVICE
TOP/BOTTOM ROD THROW = 1/2" MIN.



F 2 **HORIZONTAL SECTION**
QED100 SVR
SINGLE DOOR



dormakaba USA Inc.
6161 E. 75TH STREET
INDIANAPOLIS, IN 46250
PH: (317) 806-3288

TITLE: STANLEY COMMERCIAL HARDWARE
PANIC EXIT DEVICES

ELEVATION & SECTION VIEW
(SINGLE DOOR)

PREPARED BY:

BUILDING DROPS, INC.
398 E. DANIA BEACH BLVD., STE. 338
DANIA BEACH, FL 33004
PH: (954)399-8478
FAX: (954)744-4738
WEB: www.buildingdrops.com

REMARKS	BY	DATE

THE INSTALLATION DETAILS DESCRIBED HEREIN ARE GENERIC AND MAY NOT REFLECT ACTUAL CONDITIONS FOR A SPECIFIC SITE. IF SITE CONDITIONS CAUSE INSTALLATION TO DEVIATE FROM THE REQUIREMENTS DETAILED HEREIN, A LICENSED ENGINEER OR ARCHITECT SHALL PREPARE SITE SPECIFIC DOCUMENTS FOR USE WITH THIS DOCUMENT.

HERMES F. NORERO, P.E.
FLORIDA P.E. No 73778
BUILDING DROPS, INC
398 E. DANIA BEACH BLVD. # 338
DANIA BEACH, FL 33004
FBPE CERT. OF AUTHORIZATION No. 29578

FL16202

DATE: 12.11.18

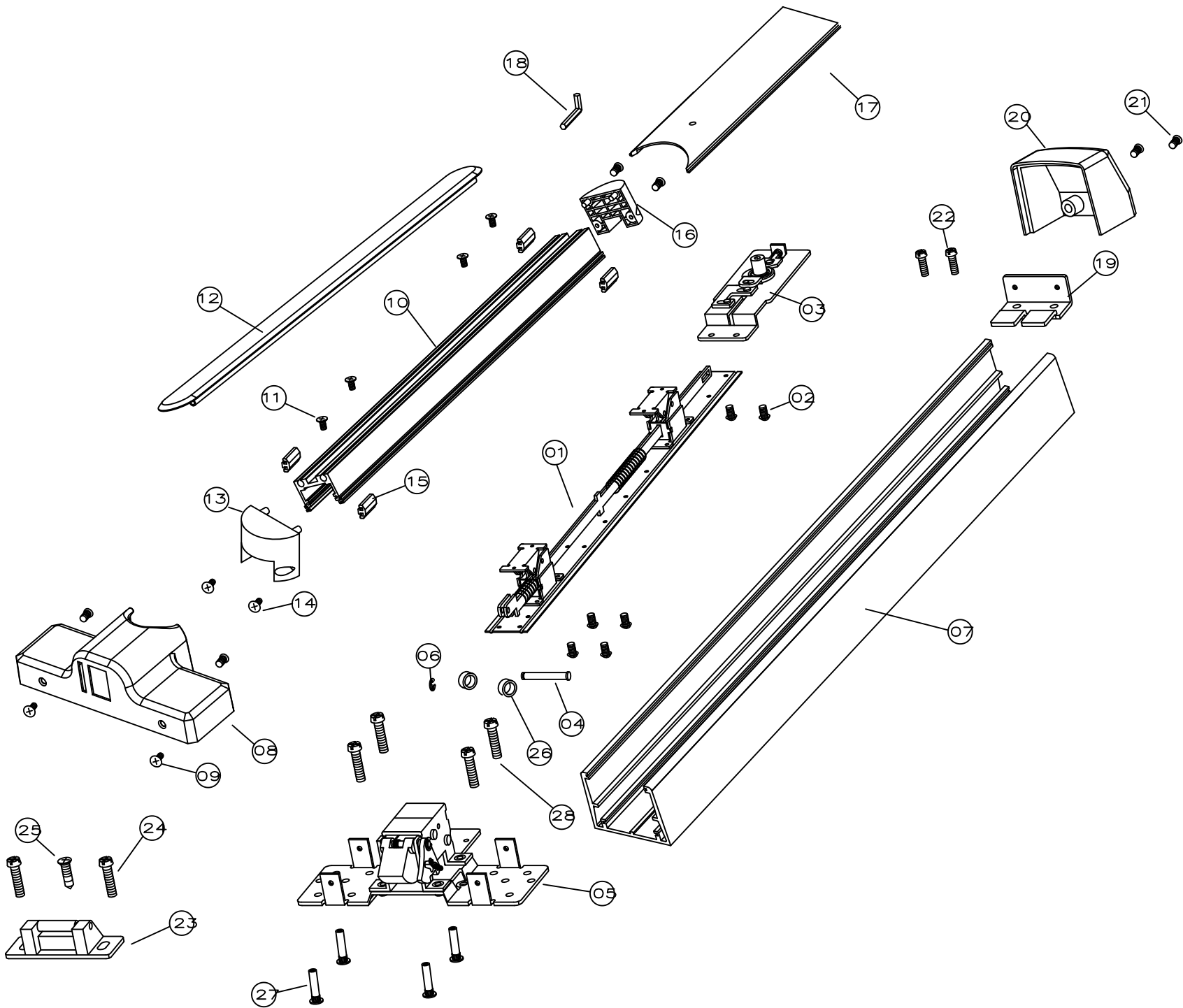
DWG. BY: SM	CHK. BY: HFN
----------------	-----------------

SCALE: NTS

DWG. #: DOR004

SHEET:

2



QED 111 (RIM EXIT)

SINGLE DOOR OR SINGLE DOOR WITH INTERMEDIATE MULLION APPLICATION ONLY
(SEE SHEET 1)

No	Drawing	Description	Q'ty
1	01-06A	Push Bar Inside Mechanism Ass'y	1
2		Machine Screw,M4-0.7P*5mm	6
3	01-07A	Hex Key Dogging Kit	1
4	RE-19	Connecting Pin	1
5	01-16A	Chassis Mechanism Ass'y (Stainless Steel)	1
6		Retaining E-ring, ETW-4	1
7	BA-86	Mechanism Housing	1
8	BA-82	Chassis Cover	1
9		Machine Screw,M4-0.7P*6mm	4
10	BA-83	Push Bar Case	1
11		Machine Screw,M4-0.7P*8mm	4
12	BA-85	Push Bar Cover	1
13	BA-84A	Front Push Bar Cap	1
14		Machine Screw, PTS3.5*12mm	4
15	BA-89	Rubber Pieces	4
16	BA-84B	Rear Push Bar Cap	1
17	BA-87	Hex Key Dogging Plate	1
18		Dogging Wrench	1
19	HA-06	End Cap Mounting Bracket	1
20	BA-88	End Cap	1
21		Machine Screw,M4-0.7P*20mm	2
22		Mounting Machine Screw, #12-24P*1"	2
23		Strike	1
24		Mounting Machine Screw/ W1/4-20P*3/4"	2
25		Dual apaurpose Machine/ #12-11P*1"	1
26	HR-75	Plastic Ring	2
27		Sex Nut	4
28		Mounting Machine Screws,1/4-20P*3/4"	4

QED 100 SERIES RIM EXIT DEVICES			
MAX. DESIGN PRESSURE RATING-PSF (48" WIDE X 96" HIGH SINGLE LEAF DOORS)			
HARDWARE MODEL	CONFIG.	EXT. (+)	INT. (-)
QED 111 (SHOWN)	SINGLE	75.0	75.0
QED 112	DOUBLE	65.0	65.0
QED 113	W/ MULLION	65.0	65.0

RIM LATCH THROW = 3/4" MIN.



dormakaba USA Inc.
6161 E. 75TH STREET
INDIANAPOLIS, IN 46250
PH: (317) 806-3288

TITLE: STANLEY COMMERCIAL HARDWARE

PANIC EXIT DEVICES

QDB 180

PREPARED BY: BUILDING DROPS, INC.

398 E. DANIA BEACH BLVD., STE. 338
DANIA BEACH, FL 33004
PH: (954)399-8478
FAX: (954)744-4738
WEB: www.buildingdrops.com



REMARKS	BY	DATE

THE INSTALLATION DETAILS DESCRIBED HEREIN ARE GENERIC AND MAY NOT REFLECT ACTUAL CONDITIONS FOR A SPECIFIC SITE. IF SITE CONDITIONS CAUSE INSTALLATION TO DEVIATE FROM THE REQUIREMENTS DETAILED HEREIN, A LICENSED ENGINEER OR ARCHITECT SHALL PREPARE SITE SPECIFIC DOCUMENTS FOR USE WITH THIS DOCUMENT.



FL16202

DATE: 12.11.18

DWG. BY: SM

CHK. BY: HFN

SCALE: NTS

DWG. #: DOR004

SHEET:

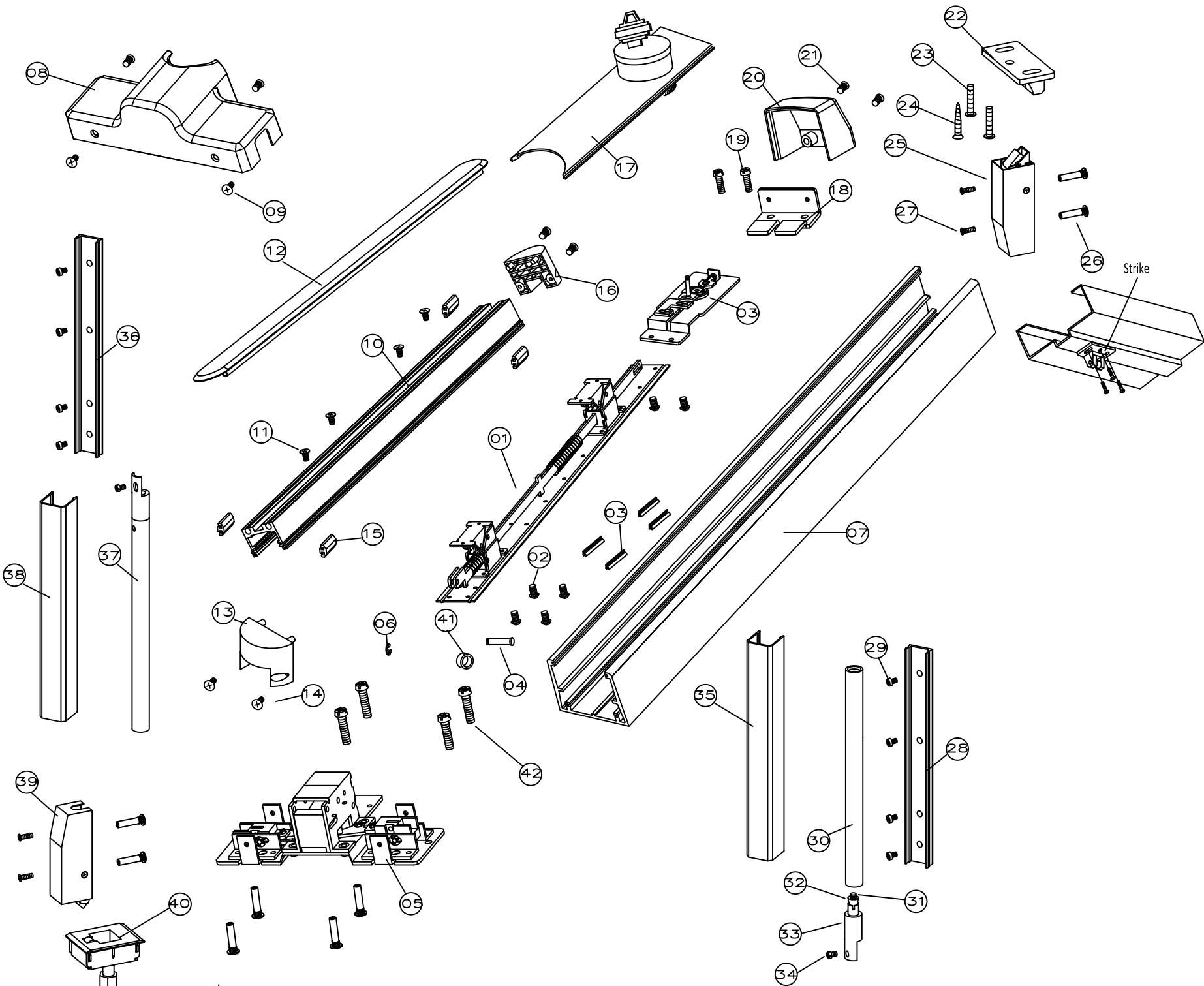
3

OF 4

No	Drawing	Description	Q'ty
1	01-06A	Push Bar/Inside Mechanism Ass'y	1
2		Machine Screw,M4-0.7P*5mm	6
3	01-07B	Cylinder Dogging Kit	1
4	RE-19	Connecting Pin	1
5	01-16C	Chassis Mechanism Ass'y	1
6		Retaining E-ring, ETW-4	1
7	BA-86	Mechanism Housing	1
8	BA-82	Chassis Cover	1
9		Machine Screw,M4-0.7P*6mm	4
10	BA-83	Push Bar Case	1
11		Machine Screw,M4-0.7P*8mm	4
12	BA-85	Push Bar Cover	1
13	BA-84A	Front Push Bar Cap	1
14		Machine Screw, PT53.5*12mm	4
15	BA-89	Rubber Pieces	4
16	BA-84B	Rear Push Bar Cap	1
17	01-09B	Cylinder Dogging Plate	1
18	HA-06	End Cap Mounting Bracket	1
19	BA-88	End Cap	1
20		Machine Screw,M4-0.7P*20mm	2
21		Mounting Machine Screw, #12-24P*1"	2
22	01-12B	Top Strike	1
23		Mounting Machine Screw, #12-24P*3/4"	2
24		Dual Purpose Machine /Tapping Screw, #12-11P*1"	1
25	01-10C	Top Latch Assembly	1
26		Sex Nut	8
27		Sex Bolt (Machine SCREW),1/4-20P*3/4"	4
28	BA-92	Top Rod Cover Base	1
29	BA-91	Top Rod Cover	1
30	SV-18B	Top Rod (Stainless Steel)	1
31		Connector Screw, M4-0.7P*35mm	2
32	SV-16	Connector Jut	2
33	SV-15	Pull Rod Connector	2
34		Machine Screw, M5-0.8P*15mm	2
35	BA-92	Bottom Rod Cover Base	1
36	BA-91	Bottom Rod Cover	1
37	SV-39	Bottom Rod Assembly (Stainless Steel)	1
38	01-11C	Bottom Latch Assembly	1
39	01-14A	Bottom Strike Assembly	1
40		Mounting Machine Screws, #8-32P*10mm	7
41	HR-75	Plastic Ring	2
42		Mounting Machine Screws,1/4-20P*3/4"	4

QED 100 SERIES VERTICAL ROD EXIT DEVICES			
MAX. DESIGN PRESSURE RATING-PSF (48" WIDE X 96" HIGH SINGLE OR DOUBLE LEAF DOORS)			
HARDWARE MODEL	CONFIG.	EXT. (+)	INT. (-)
QED 114 QED 115 (SHOWN) QED 116	SINGLE	75.0	75.0
	DOUBLE W/ MULLION	65.0	65.0

TOP/BOTTOM ROD THROW = 1/2" MIN.



QED 115 (SVR)



dormakaba USA Inc.
6161 E. 75TH STREET
INDIANAPOLIS, IN 46250
PH: (317) 806-3288

TITLE: STANLEY COMMERCIAL HARDWARE

PANIC EXIT DEVICES

QDB 181

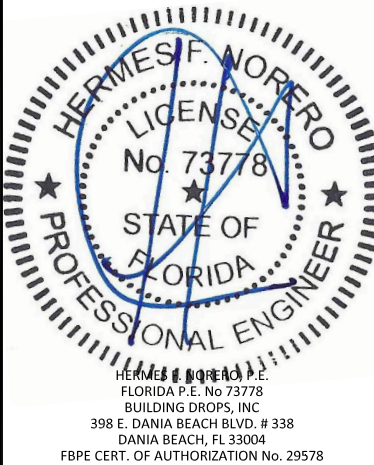
PREPARED BY:

BUILDING DROPS, INC.
398 E. DANIA BEACH BLVD., STE. 338
DANIA BEACH, FL 33004
PH: (954)399-8478
FAX: (954)744-4738
WEB: www.buildingdrops.com



REMARKS	BY	DATE

THE INSTALLATION DETAILS DESCRIBED HEREIN ARE GENERIC AND MAY NOT REFLECT ACTUAL CONDITIONS FOR A SPECIFIC SITE. IF SITE CONDITIONS CAUSE INSTALLATION TO DEVIATE FROM THE REQUIREMENTS DETAILED HEREIN, A LICENSED ENGINEER OR ARCHITECT SHALL PREPARE SITE SPECIFIC DOCUMENTS FOR USE WITH THIS DOCUMENT.



FL16202

DATE: 12.11.18

DWG. BY: SM

CHK. BY: HFN

SCALE: NTS

DWG. #: DOR004

SHEET:

4

OF 4