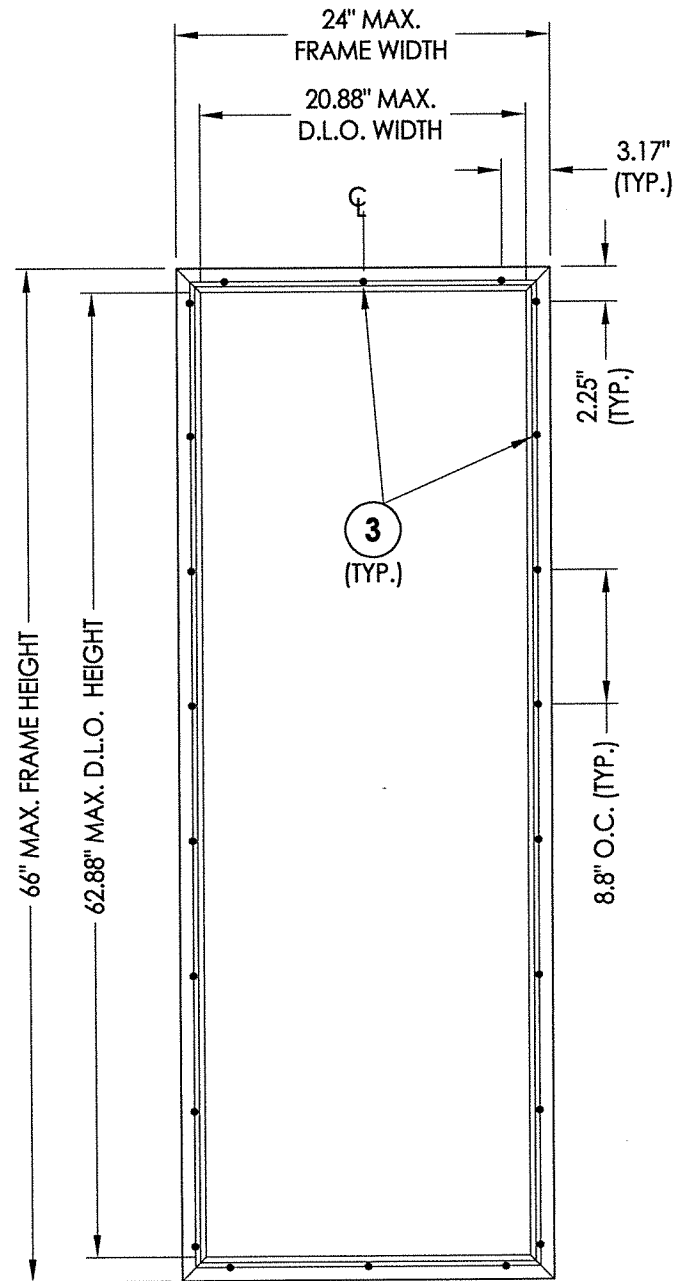
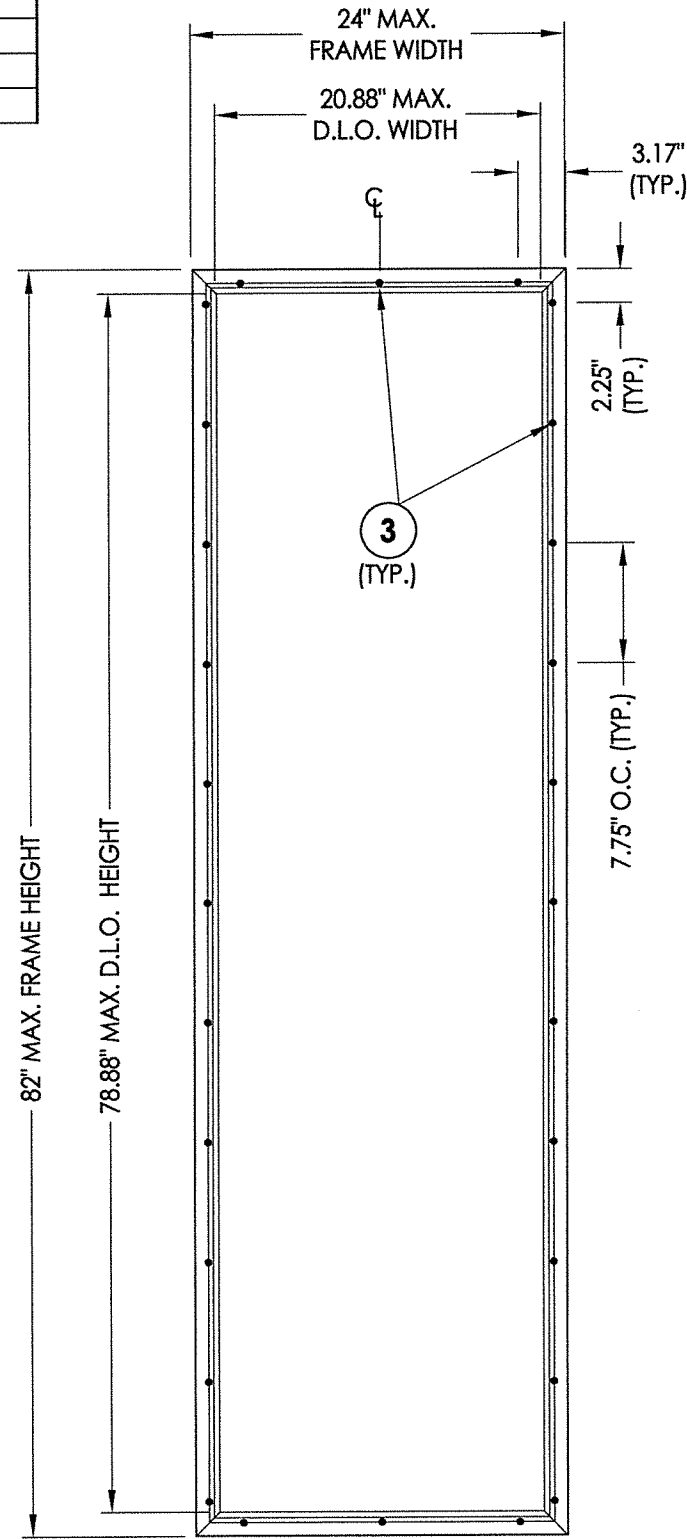




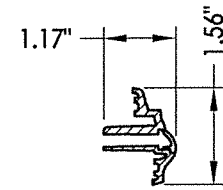
BILL OF MATERIALS		
ITEM #	DESCRIPTION	MATERIAL
1	INTERIOR FRAME (EVOLVE)	HP-POLYPRO
2	EXTERIOR FRAME (EVOLVE)	HP-POLYPRO
3	#8 X 1-1/2" PPH SMS (HI-LO THREAD)	STEEL



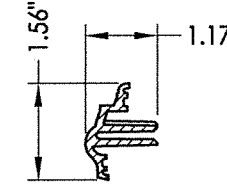
EVOLVE FRAME SYSTEM  
HP Polypropylene  
6'-8" DOOR



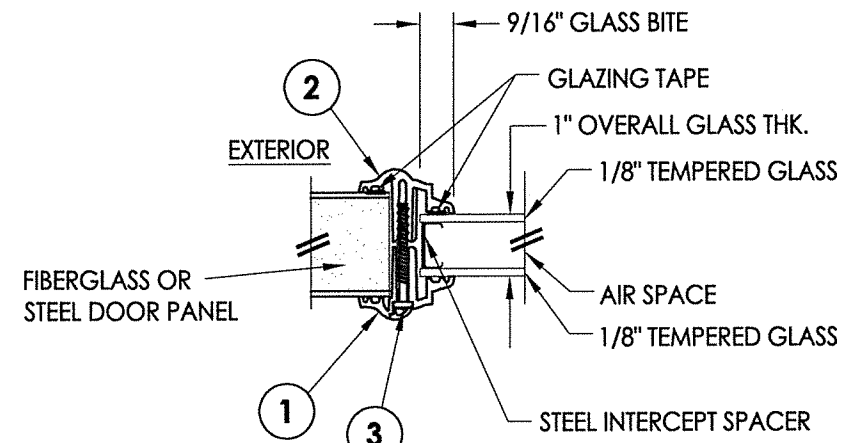
EVOLVE FRAME SYSTEM  
HP Polypropylene  
8'-0" DOOR



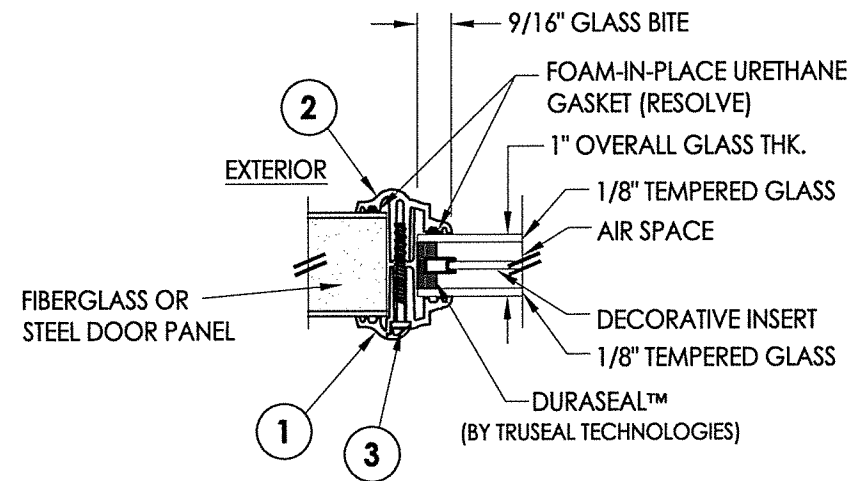
1 INTERIOR FRAME  
Evolve Frame



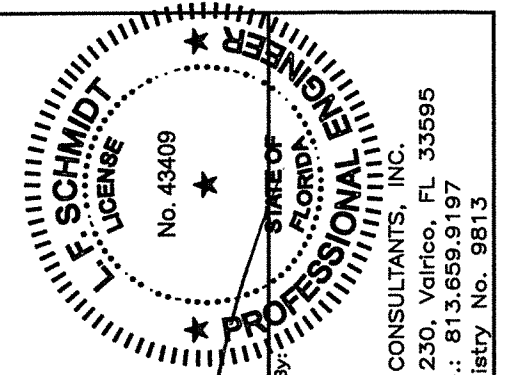
2 EXTERIOR FRAME  
Evolve Frame



G1 GLAZING DETAIL  
EVOLVE FRAME (1" INSULATED GLASS)  
TAPE GLAZING



G2 GLAZING DETAIL  
EVOLVE FRAME (1" DECOSEAL INSULATED GLASS)  
RESOLVE GASKET



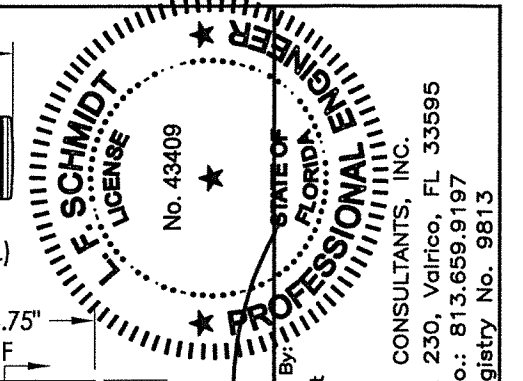
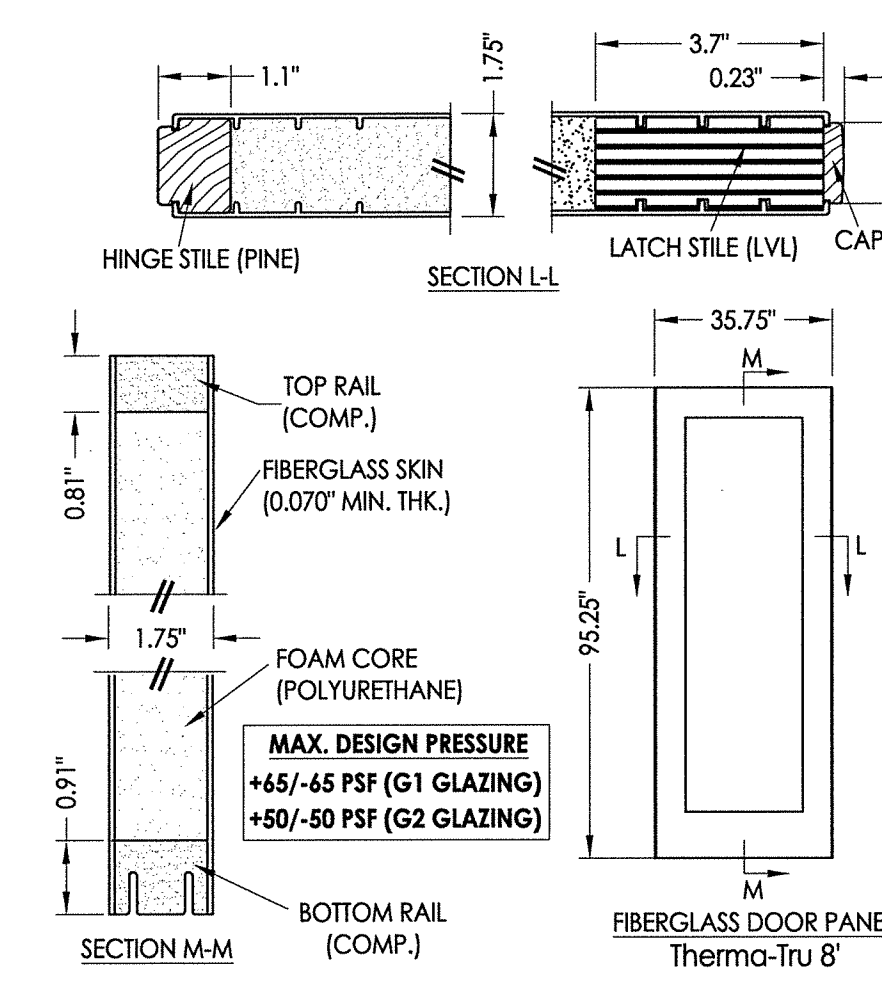
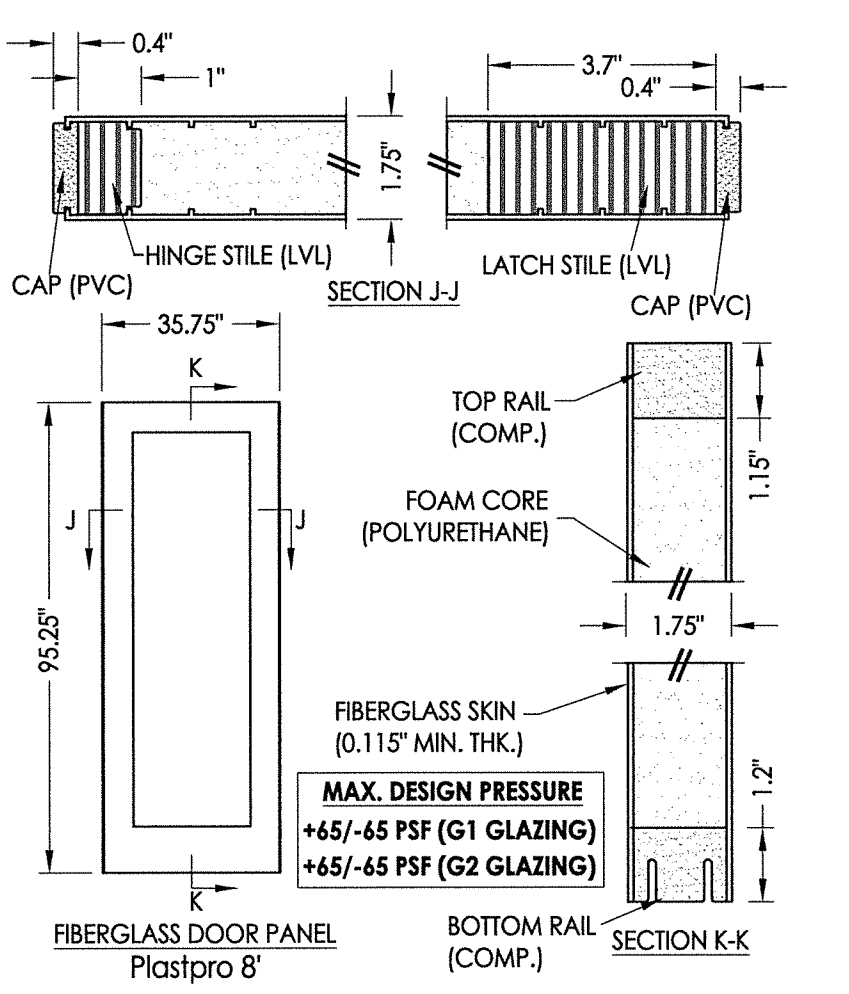
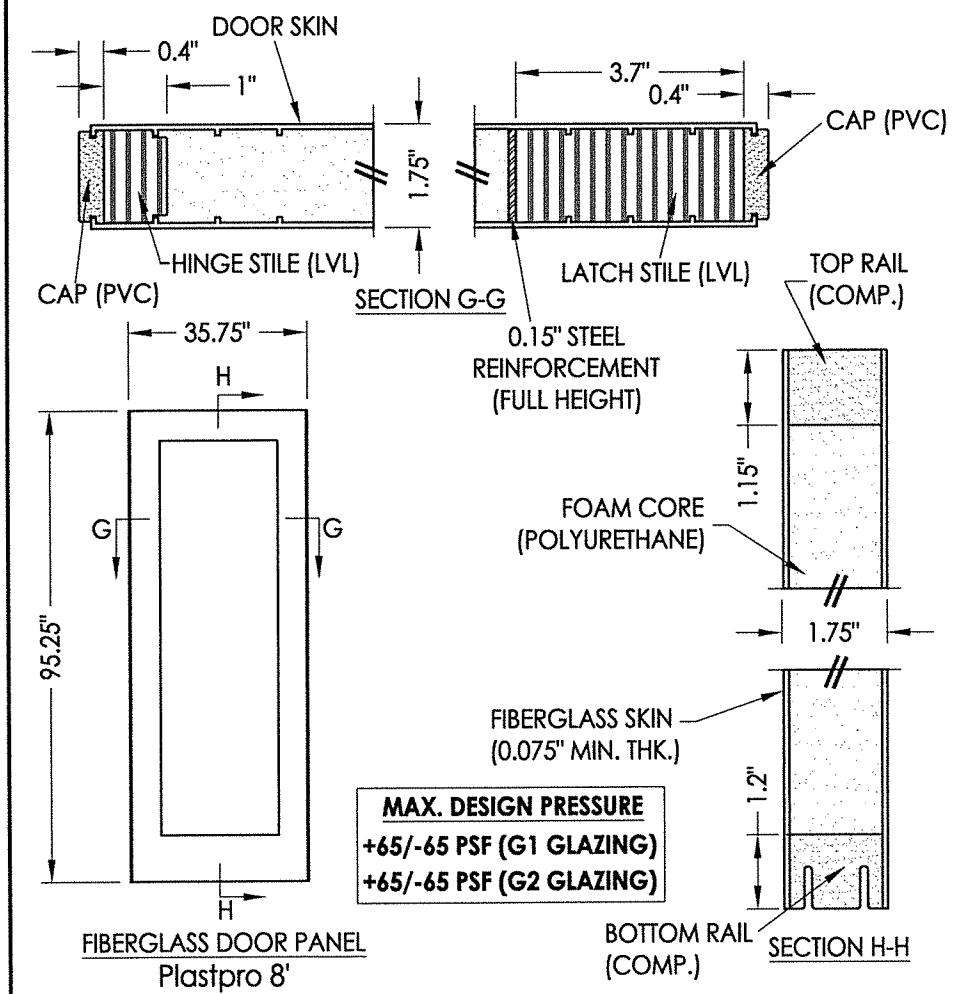
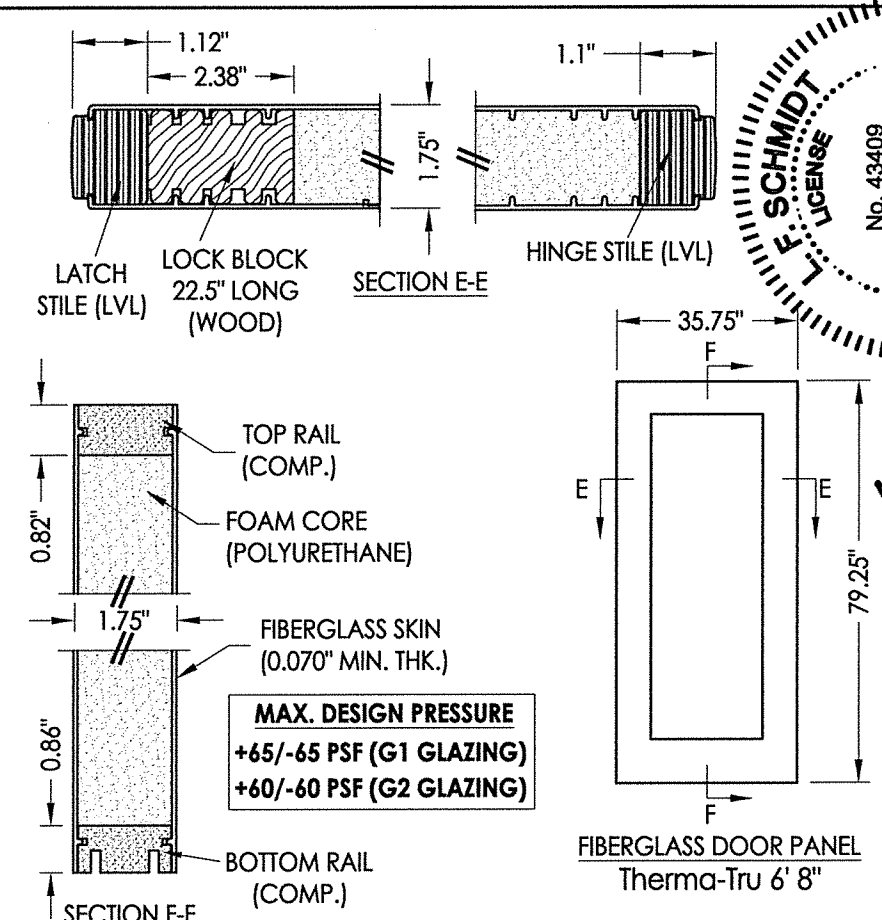
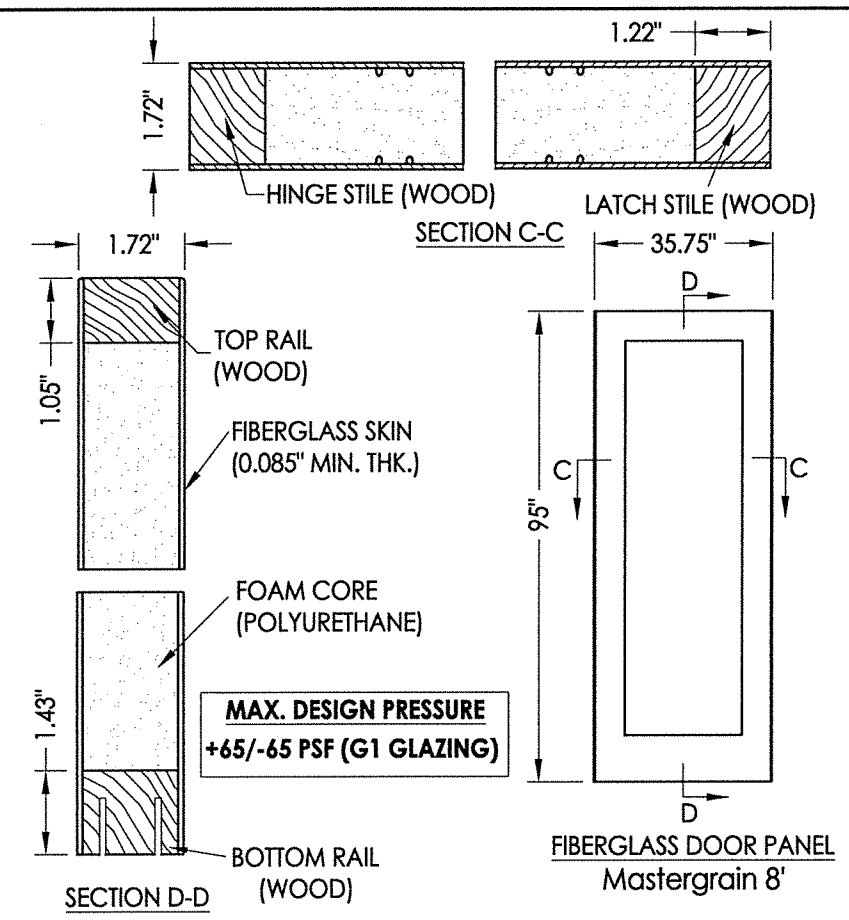
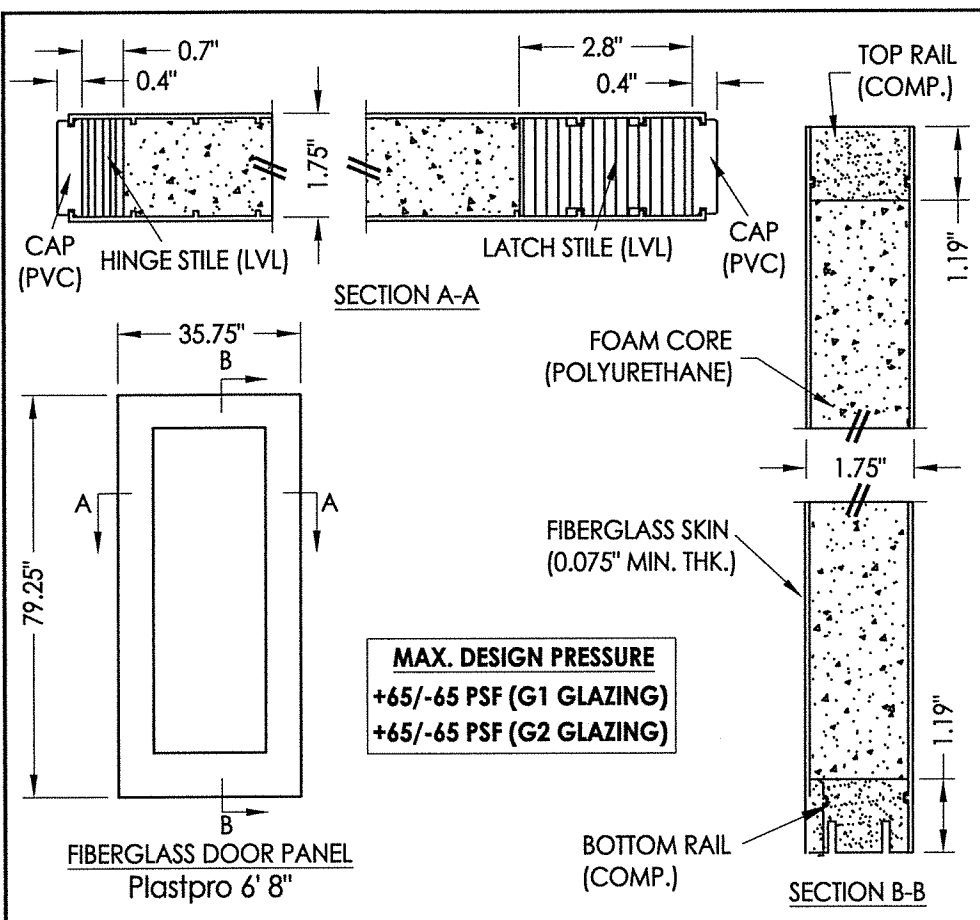
August 07, 2020

Documents Prepared By:  
Lyndon F. Schmidt  
P.E. No. 43409

RW BUILDING CONSULTANTS, INC.  
P.O. Box 230, Valrico, FL 33595  
Phone No.: 813.659.9197  
FBPE Registry No. 9813

PRODUCT:	EVOLVE FRAME SYSTEM	
PART OR ASSEMBLY:	FRAME & GLAZING DETAILS & BILL OF MATERIALS	
NO.	DATE	BY
4	8/05/20	DAC
3	4/04/19	LFS
2	10/03/18	LFS
1	9/26/17	JK
REVISIONS		
DATE:	3/31/15	
SCALE:	N.T.S.	
DWG. BY:	JK	
CHK. BY:	LFS	
DRAWING NO.:	FL-15260.15	
SHEET	2 OF 4	

\\dc01\rbwc\Clients\ODL, Inc. PERMANENTVA - Florida Product Approvals\FL-15260 Exterior Door Components - Lite Frame Inserts\C - Drawings\FL 15260 (2020) R9\FL-15260.15.dwg

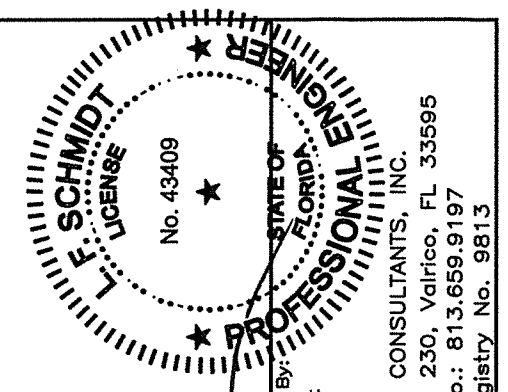
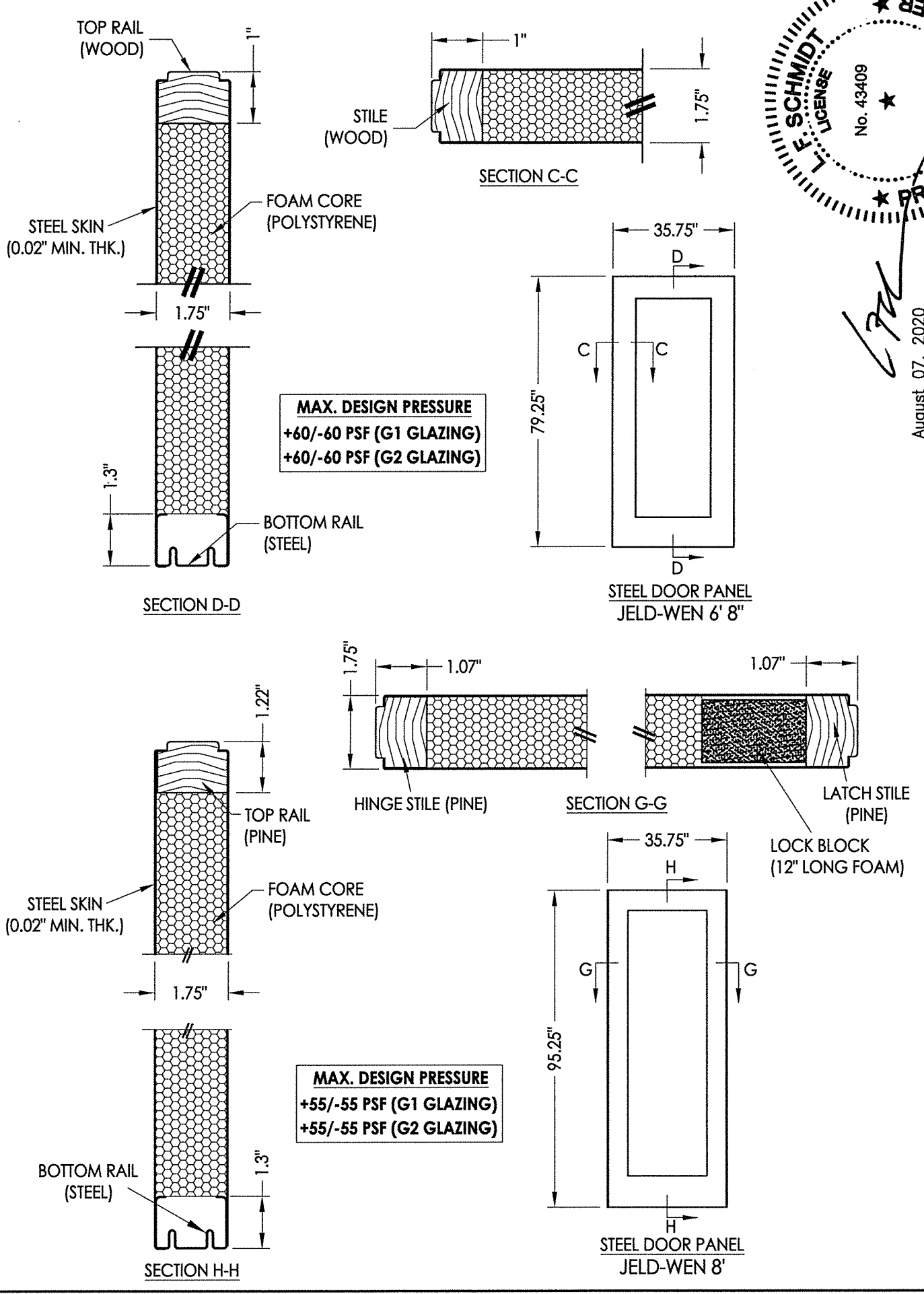
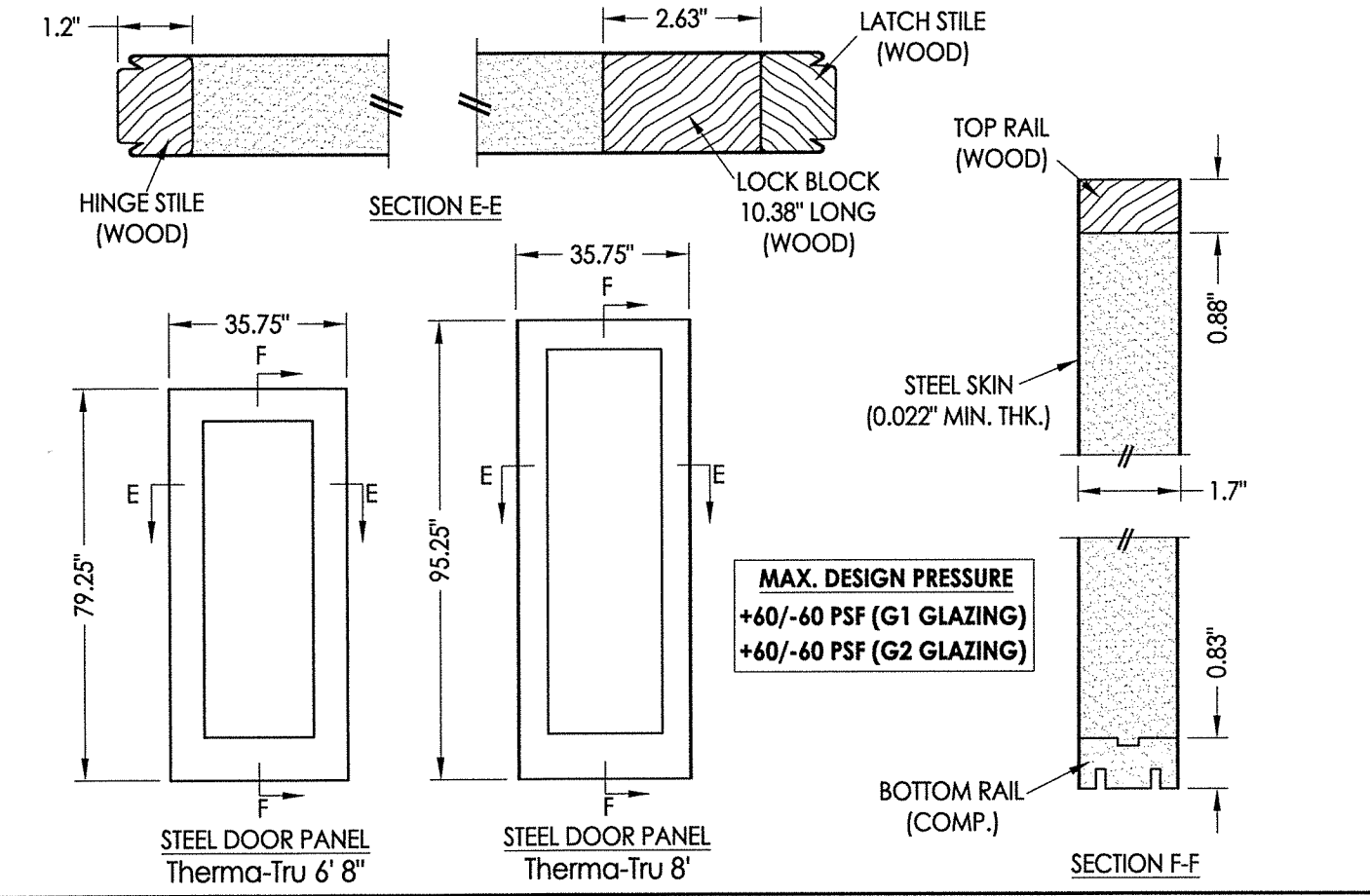
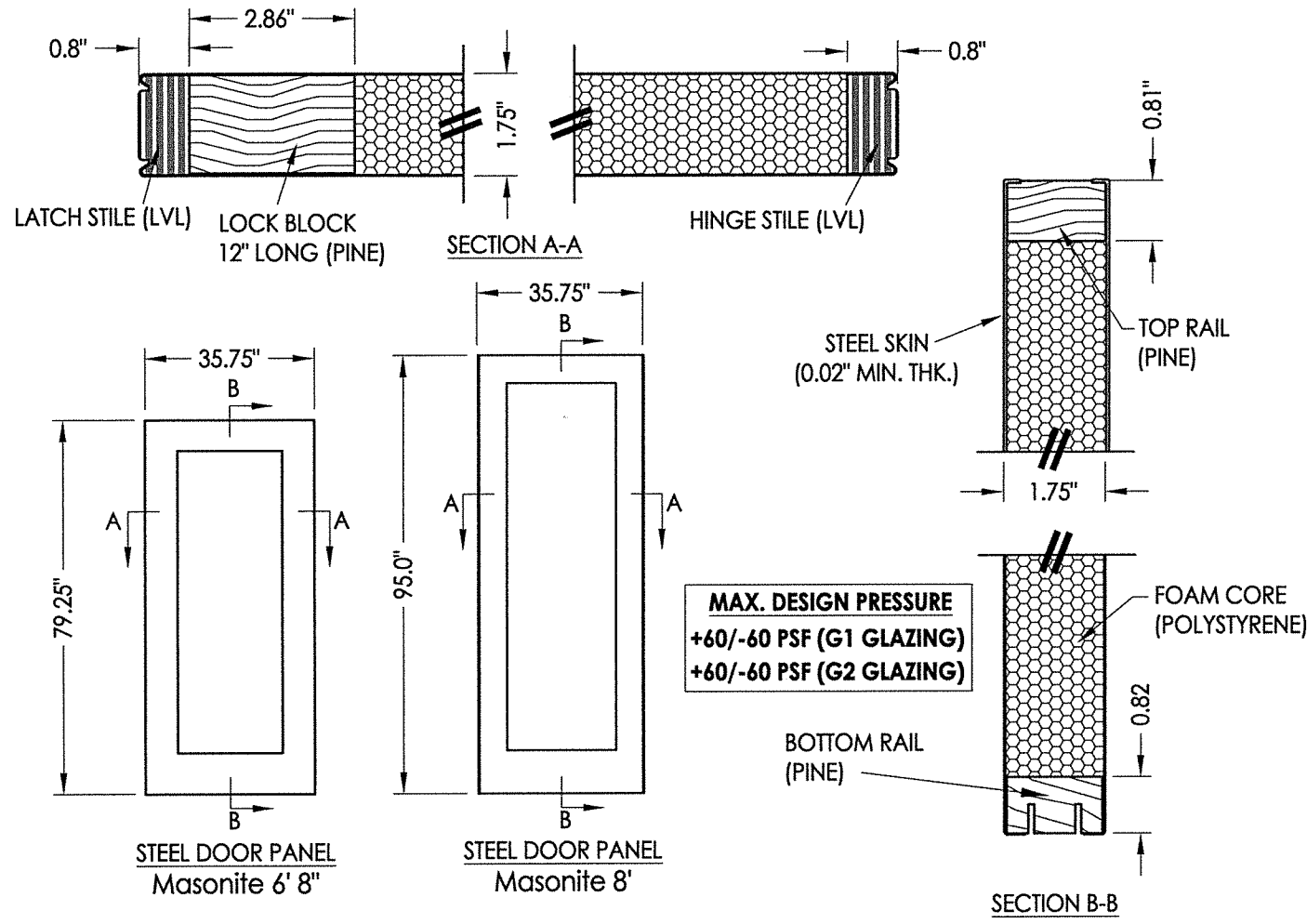


August 07, 2020  
Documents Prepared By:  
Lyndon F. Schmidt  
P.E. No. 43409

**R.W.**  
BUILDING CONSULTANTS, INC.  
P.O. Box 230, Valrico, FL 33595  
Phone No.: 813.659.9197  
FBPE Registry No. 9813

PRODUCT:		EVOLVE LITE FRAME SYSTEM	
PART OR ASSEMBLY:		FIBERGLASS DOOR PANELS	
NO.	DATE	BY	REVISIONS
4	8/05/20	FBC	UPDATE TO 7TH ED. (2020)
3	4/04/19	LFS	UPDATE D.P. FOR NEW TESTING
2	10/03/18	JK	REVISE GLAZING DETAIL
1	9/26/17	FBC	UPDATE TO 6TH ED. (2017)
DATE:		3/31/15	
SCALE:		N.T.S.	
DWG. BY:		JK	
CHK. BY:		LFS	
DRAWING NO.:		FL-15260.15	
SHEET		3 OF 4	

© 2015 R.W. BUILDING CONSULTANTS INC.



August 07, 2020  
 Documents Prepared By:  
 Lyndon F. Schmidt  
 P.E. No. 43409

PRODUCT: EVOLVE LITE FRAME SYSTEM	
PART OR ASSEMBLY: STEEL DOOR PANELS	
NO.	DATE
4	8/05/20
3	4/04/19
2	10/03/18
1	9/26/17
REVISIONS	
DATE:	3/31/15
SCALE:	N.T.S.
DWG. BY:	JK
CHK. BY:	LFS
DRAWING NO.:	FL-15260.15
SHEET	4 OF 4