

GENERAL NOTES:

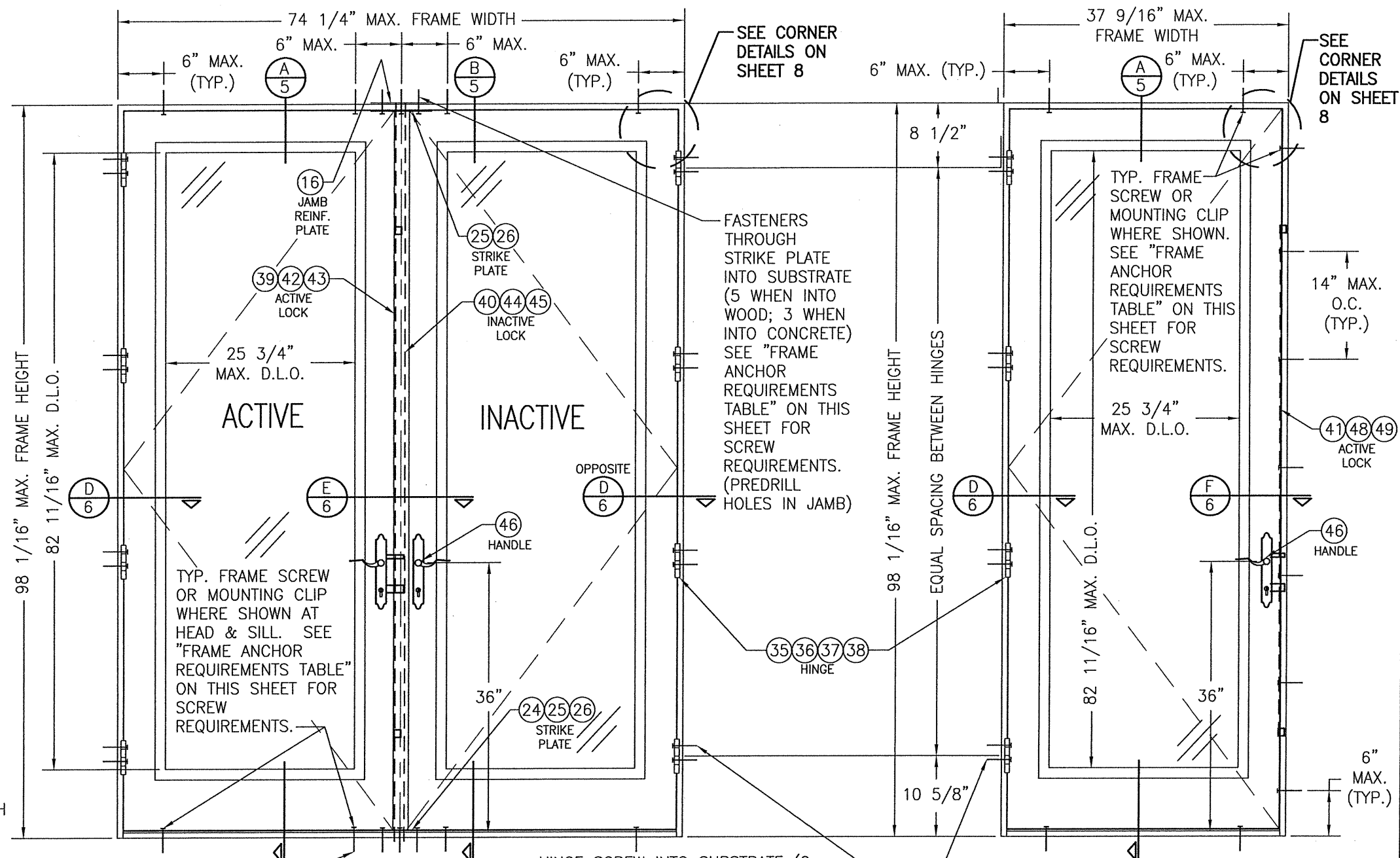
- THIS PRODUCT HAS BEEN TESTED, ANALYZED & APPROVED FOR DESIGN PRESSURES NOT TO EXCEED THOSE SHOWN IN THE "ALLOWABLE DESIGN PRESSURE TABLE(S)".
- OPENINGS, BUCKING & BUCKING FASTENERS MUST BE PROPERLY DESIGNED & INSTALLED TO TRANSFER WIND LOADS TO THE STRUCTURE.
- ALL HARDWARE & FASTENERS SHALL BE IN ACCORDANCE WITH THESE DRAWINGS & SHALL NOT VARY UNLESS SPECIFICALLY MENTIONED ON THE DRAWINGS. SPECIFIED ANCHOR EMBED TO BASE MATERIAL SHALL BE BEYOND WALL FINISH OR STUCCO.
- THIS PRODUCT HAS BEEN DESIGNED IN ACCORDANCE WITH AND MEETS THE REQUIREMENTS OF THE FLORIDA BUILDING CODE (FBC) INCLUDING HIGH VELOCITY HURRICANE ZONES (HVHZ) & IS LARGE MISSILE IMPACT RATED.
- IMPACT SHUTTERS ARE NOT REQUIRED WITH THIS PRODUCT.
- ALL ANCHORS SECURING PRODUCT FRAMES TO PRESSURE TREATED BUCKS OR WOOD FRAMING SHALL BE CAPABLE OF RESISTING CORROSION CAUSED BY THE PRESSURE TREATING CHEMICALS IN THE WOOD.
- DETERMINE THE POSITIVE & NEGATIVE DESIGN LOADS TO USE WHEN REFERENCING THESE DOCUMENTS IN ACCORDANCE WITH THE GOVERNING CODE AND GOVERNING WIND VELOCITY. FOR WIND LOAD CALCULATIONS IN ACCORDANCE WITH THE FLORIDA BUILDING CODE, A DIRECTIONALITY FACTOR OF $K_d = 0.85$ MAY BE APPLIED PER THE ASCE-7 STANDARD.
- MATERIALS, INCLUDING BUT NOT LIMITED TO STEEL SCREWS, THAT COME INTO CONTACT WITH OTHER DISSIMILAR MATERIALS SHALL MEET THE REQUIREMENTS OF FLORIDA BUILDING CODE.
- TO THE BEST OF OUR KNOWLEDGE, THE PRODUCT SHOWN HEREIN IS QUALITY ASSURED BY A FLORIDA STATE APPROVED CERTIFICATION/QA ENTITY & SHALL BE LABELED IN ACCORDANCE WITH THE FBC AND THE FLORIDA DEPARTMENT OF BUSINESS & PROFESSIONAL REGULATION SPECIFICATIONS. THESE DRAWINGS SHOW ALL APPLICABLE ELEVATION, COMBINATION, INSTALLATION & COMPARATIVE ANALYSIS CONDITIONS AS DETERMINED THROUGH TESTING & ENGINEERING RATIONAL ANALYSIS. PRODUCT ASSEMBLY SHALL BE IN ACCORDANCE WITH THESE DRAWINGS, THE MANUFACTURER'S QUALITY ASSURANCE SPECIFICATIONS & TESTING REPORTS.
- CERTIFICATION OF THIS PRODUCT SHALL BE CONSIDERED VOID IF IT IS INSTALLED WITHOUT A BUILDING PERMIT FROM THE APPLICABLE LOCAL BUILDING DEPARTMENT OR IF IT IS INSTALLED BY ANYONE OTHER THAN A LICENSED CONTRACTOR EXPERIENCED WITH INSTALLATIONS OF THIS TYPE OF PRODUCT.
- ALL WOOD MEMBERS OF THIS PRODUCT THAT MAY POSSIBLY COME INTO CONTACT WITH MASONRY OR CONCRETE SUBSTRATES, ARE SUBJECT TO MOISTURE &/OR ARE SUBJECT TO THE OUTSIDE ENVIRONMENT SHALL BE OF AN APPROVED DURABLE SPECIES OR BE TREATED IN AN APPROVED METHOD WITH AN APPROVED PRESERVATIVE PER FBC REQUIREMENTS.

ALTERNATE ANCHOR/SUBSTRATE EVALUATION NOTE:

ALL ALTERNATE ANCHORS IN THEIR SPECIFIED SUBSTRATES HAVE BEEN ANALYZED IN ACCORDANCE WITH THEIR APPLICABLE STANDARD(S) AND ARE FOUND TO BE EQUIVALENT TO OR STRONGER THAN THE ANCHOR(S) USED IN TESTING WITH THIS PRODUCT.

EVALUATION OF THIS PRODUCT IS BASED ON APPLICABLE STANDARDS AND/OR INFORMATION & RESULTS FROM APPLICABLE TEST REPORTS. THE FLORIDA BUILDING CODE VERSION CONSIDERED WITH THIS EVALUATION WAS THAT IN FORCE AT THE TIME OF THE EVALUATION. IN THE EVENT OF CODE VERSION CHANGES/UPDATES OR IN THE EVENT THAT NEW OR ADDITIONAL TESTING IS COMPLETED ON THIS PRODUCT, PRIOR TO STATING CODE COMPLIANCE WITH THE STATE, THE MANUFACTURER SHALL CONFIRM WITH THE EVALUATION ENGINEER OF RECORD THAT EVERYTHING SPECIFIED HERE-IN IS CURRENT WITH ALL CURRENT TESTING, CODES AND APPLICABLE STANDARDS.

FASTENERS THROUGH STRIKE PLATE INTO SUBSTRATE WITH STANDARD BUMPER SILL & THRESHOLD OPTIONS 3 & 4 (5 WHEN INTO WOOD; 3 WHEN INTO CONCRETE). WHEN THRESHOLD OPTIONS 2, 5 OR 6 ARE USED, THERE IS NO STRIKE PLATE AND ALL ANCHORS RUN THROUGH THE THRESHOLD & SUB-THRESHOLD ONLY INTO SUBSTRATE.



**INTERIOR ELEVATION
DOUBLE INSWING DOOR**
SCALE: 3/4"=1'-0"

**INTERIOR ELEVATION
SINGLE INSWING DOOR**
SCALE: 3/4"=1'-0"

ALLOWABLE DESIGN PRESSURE
SEE LOAD TABLE ON SHEET 9

NOTE: DOORS MAY BE FULLY GLAZED AS SHOWN, PARTIALLY PANELED OR FULLY PANELED. SEE SHEET 4 ELEVATION FOR PANELED DOORS.

NOTE: SINGLE DOOR SHOWN HAS THE 3-POINT LOCK SYSTEMS. AN ALTERNATE LOCK MAY BE A SINGLE POINT BALDWIN 6021 OR 6321 MORTISE LOCK. IF EITHER MORTISE LOCK IS USED, ALLOWABLE DESIGN PRESSURE SHALL BE THE LESSER OF +/-60 PSF. OR THE LOADS IN THE LOAD TABLES.

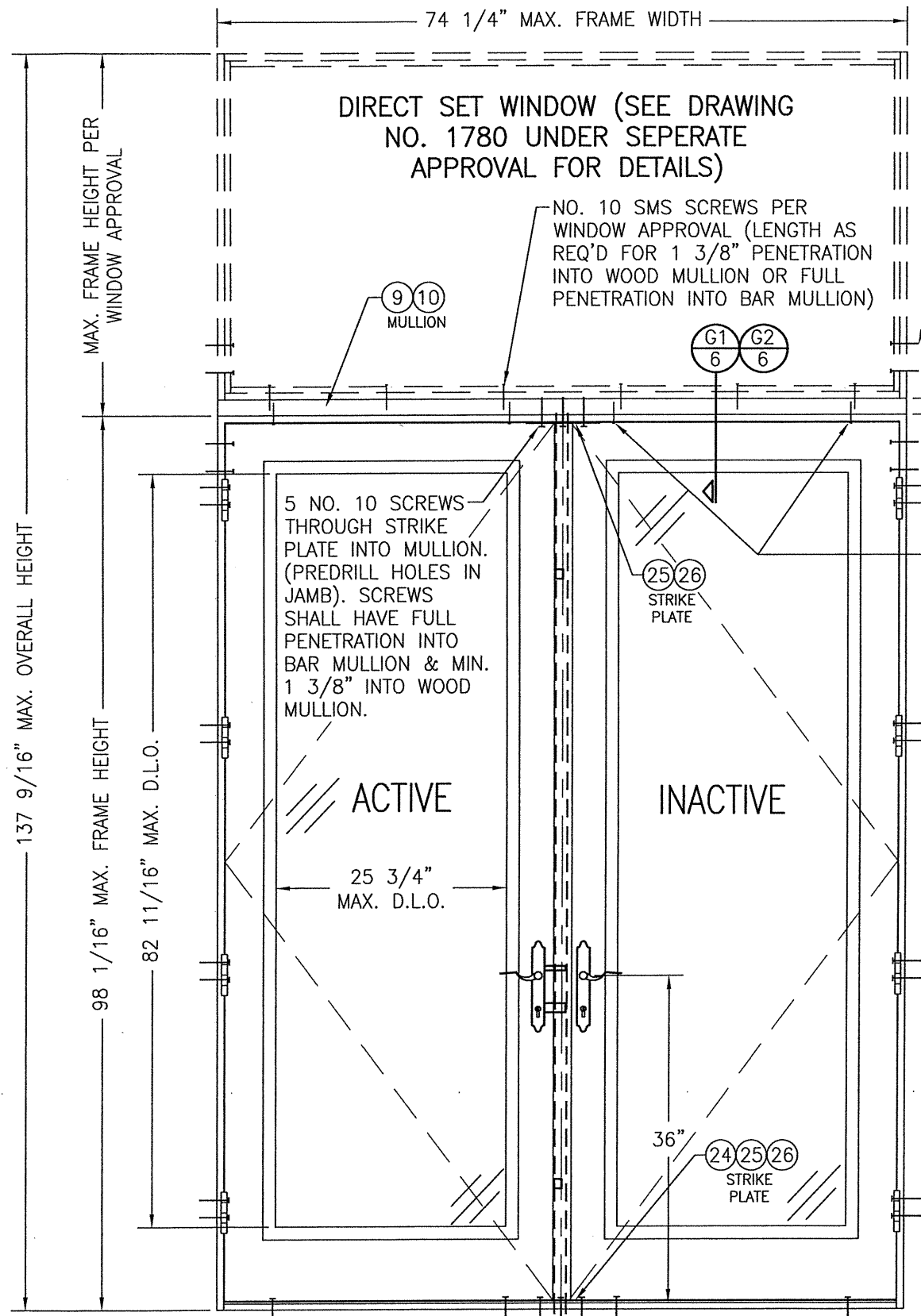
FRAME ANCHOR REQUIREMENTS TABLE			
OPENING TYPE (SUBSTRATE)	FRAME/CLIP TO OPENING FASTENER TYPE	MINIMUM EMBED	MINIMUM EDGE DIST.
FRAME SCREWS			
MIN. 2X4 WOOD FRAME OR BUCK (MIN. GR. 3 & G=0.55)	NO. 10 SMS OR WOOD SCREW	1 1/4"	3/4"
MIN. 18 GA. 33 KSI METAL STUD	NO. 10 GR. 5 SELF TAP/DRILL SCREW	FULL	1/2"
MIN. 1/8" THK A36 STEEL	NO. 10 GR. 5 SELF TAP/DRILL SCREW	FULL	1/2"
MIN. 1/8" THK 6063-T5 ALUM.	NO. 10 GR. 5 SELF TAP/DRILL SCREW	FULL	1/2"
MIN. C-90 CMU OR 2500 PSI CONCRETE	(1) 1/4" CONCRETE SCREW	1 1/4"	2"
HINGE & STRIKE SCREWS			
MIN. 2X4 WOOD FRAME OR BUCK (MIN. GR. 3 & G=0.55)	NO. 10 SMS OR WOOD SCREW	1 1/4"	3/4"
MIN. 18 GA. 33 KSI METAL STUD	NO. 10 GR. 5 SELF TAP/DRILL SCREW	FULL	1/2"
MIN. 1/8" THK A36 STEEL	NO. 10 GR. 5 SELF TAP/DRILL SCREW	FULL	1/2"
MIN. 1/8" THK 6063-T5 ALUM.	NO. 10 GR. 5 SELF TAP/DRILL SCREW	FULL	1/2"
(2) MIN. C-90 CMU	(1) 3/16" CONCRETE SCREW	1 1/4"	2"
MIN. 2500 PSI CONCRETE	(1) 3/16" CONCRETE SCREW	1 1/2"	2"

FRAME ANCHOR REQUIREMENTS TABLE (CONT'D)			
OPENING TYPE (SUBSTRATE)	FRAME/CLIP TO OPENING FASTENER TYPE	MINIMUM EMBED	MINIMUM EDGE DIST.
INSTALLATION CLIP SCREWS			
MIN. 2X4 WOOD FRAME OR BUCK (MIN. GR. 3 & G=0.55)	NO. 8 SMS SCREW	1 3/8"	1/2"
MIN. 18 GA. 33 KSI METAL STUD	NO. 8 GR. 5 SELF TAP/DRILL SCREW	FULL	1/2"
MIN. 1/8" THK A36 STEEL	NO. 8 GR. 5 SELF TAP/DRILL SCREW	FULL	1/2"
MIN. 1/8" THK 6063-T5 ALUM.	NO. 8 GR. 5 SELF TAP/DRILL SCREW	FULL	1/2"
(1) CONCRETE SCREWS SHALL BE ELCO ULTRACONS, ELCO CRETE-FLEX, ITW RAMSET/RED HEAD TAPCONS OR HILTI KWIK-CON II (HARDENED STEEL OR S.S.).			
(2) CMU IS APPLICABLE AT SIDES ONLY.			

HINGE REQUIREMENTS	
DOOR HEIGHT	# HINGES REQ'D
6'-8"	3
TALLER THAN 6'-8"	(1) 4
(1) 3 HINGES REQUIRED WITH ALL HEIGHTS OF DOUBLE HALF ROUND & SINGLE QUARTER ROUND DOORS	

THESE DRAWINGS ARE APPLICABLE ONLY TO THE PRODUCT SPECIFIED. THEY MAY NOT BE USED FOR THE ASSEMBLY AND/OR INSTALLATION OF ANY OTHER PRODUCT NOR MAY THEY BE USED FOR RATIONAL AND/OR LOCAL APPROVAL OF ANY PRODUCT NOT PRODUCED BY THE MANUFACTURER STATED ON THESE DRAWINGS.

DRAWN BY: W.R.M.		CHECKED BY: W.W.S.	
PLOT: 1=16		DATE: 10/31/11	
NO.	REVISION DESCRIPTION	BY	DATE
A1	UPDATE TO CURRENT STANDARDS	W.W.S.	01/09/15
B1	ADD ALTERNATE THRESHOLD	W.W.S.	01/29/19
C1	ADD ALTERNATE BALDWIN LOCK	W.W.S.	08/05/20
C2	ADD ALTERNATE THRESHOLD	W.W.S.	08/05/20
DRAWING TITLE: 8 FOOT WOOD INSWING IMPACT DOORS			
MANUFACTURER: SIGNATURE DOOR INC. 401 PRIORITY STREET ALTOONA, PA 16602 814-949-2770			
CONSULTANTS: W. W. SCHAEFER ENGINEERING & CONSULTING, P.A. (CA 6809) 7480 150TH COURT NORTH PALM BEACH GARDENS, FL 33418 PHONE: 561-744-3424			
DRAWING NO. 1779		REV. C	
SHEET NO. 1		OF 11	

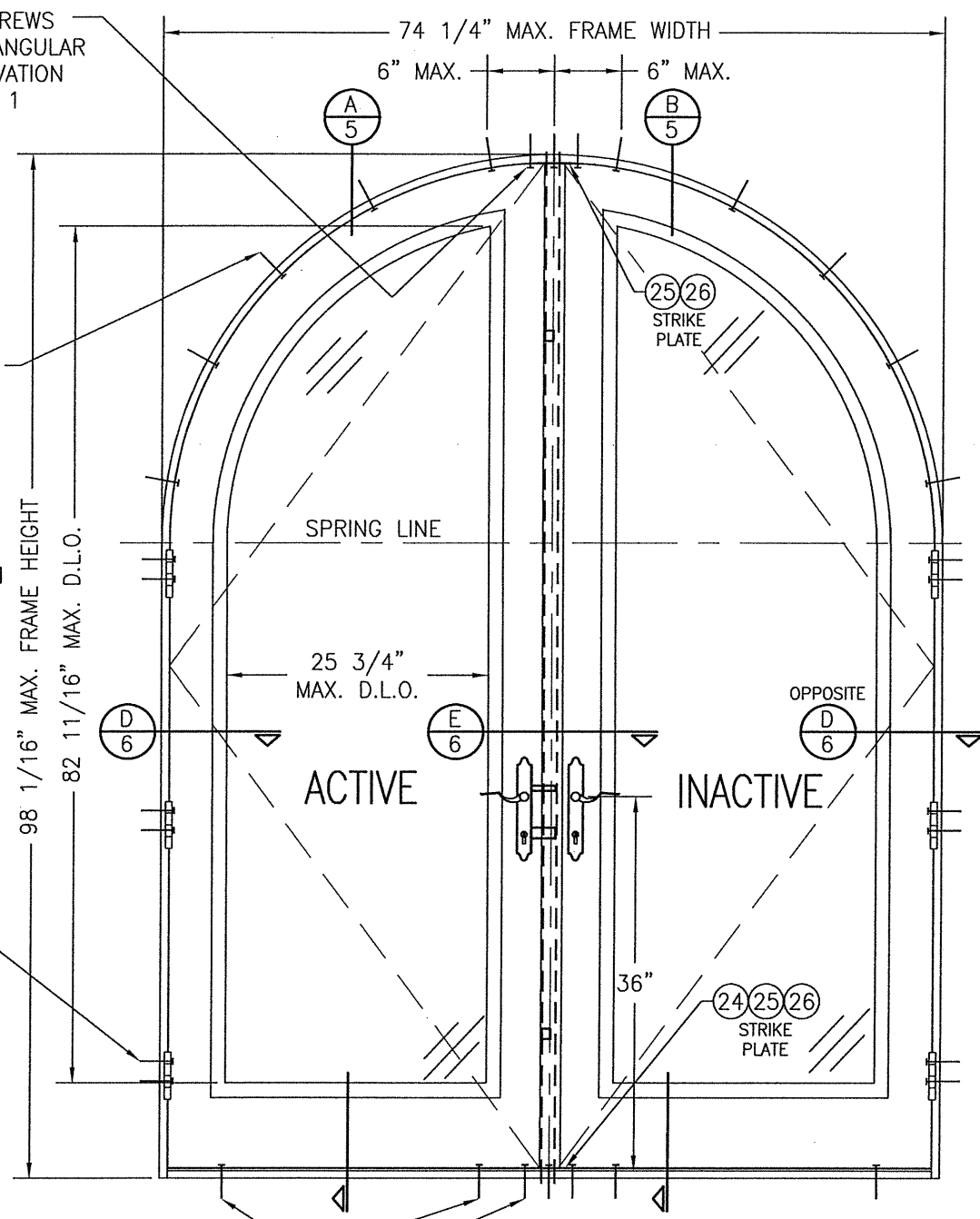


**INTERIOR ELEVATION
DOUBLE DOOR WITH TRANSOM**

SCALE: 3/4"=1'-0"

SEE DOUBLE DOOR ELEVATION ON SHEET 1 FOR DETAIL NOT SHOWN

STRIKE SCREWS
PER RECTANGULAR
DOOR ELEVATION
ON SHEET 1



**INTERIOR ELEVATION
DOUBLE HALF ROUND DOOR**

SCALE: 3/4"=1'-0"

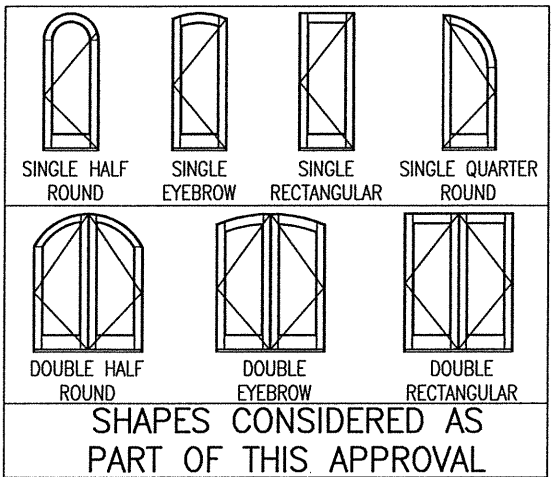
SEE DOUBLE DOOR ELEVATION ON SHEET 1 FOR DETAIL NOT SHOWN

2 FRAME SCREWS OR MOUNTING
CLIPS EA. SIDE OF MULLION AS
SHOWN (TYP. EA. END). SEE
ANCHOR REQ. TABLE ON SHEET 1
FOR SCREW REQUIREMENTS .

TYP. FRAME SCREW
OR MOUNTING CLIP
WITHIN 6" OF
SPRING LINE &
MAX. 16" O.C.
SEE "FRAME
ANCHOR
REQUIREMENTS
TABLE" ON SHEET 1
FOR SCREW
REQUIREMENTS.

DOOR HEAD JAMB
ANCHORS PER DOOR
ELEVATION ON SHEET
1 (LENGTH OF
ANCHOR AS REQ'D
FOR 1 3/8"
PENETRATION INTO
WOOD MULLION OR
FULL PENETRATION
INTO BAR MULLION)

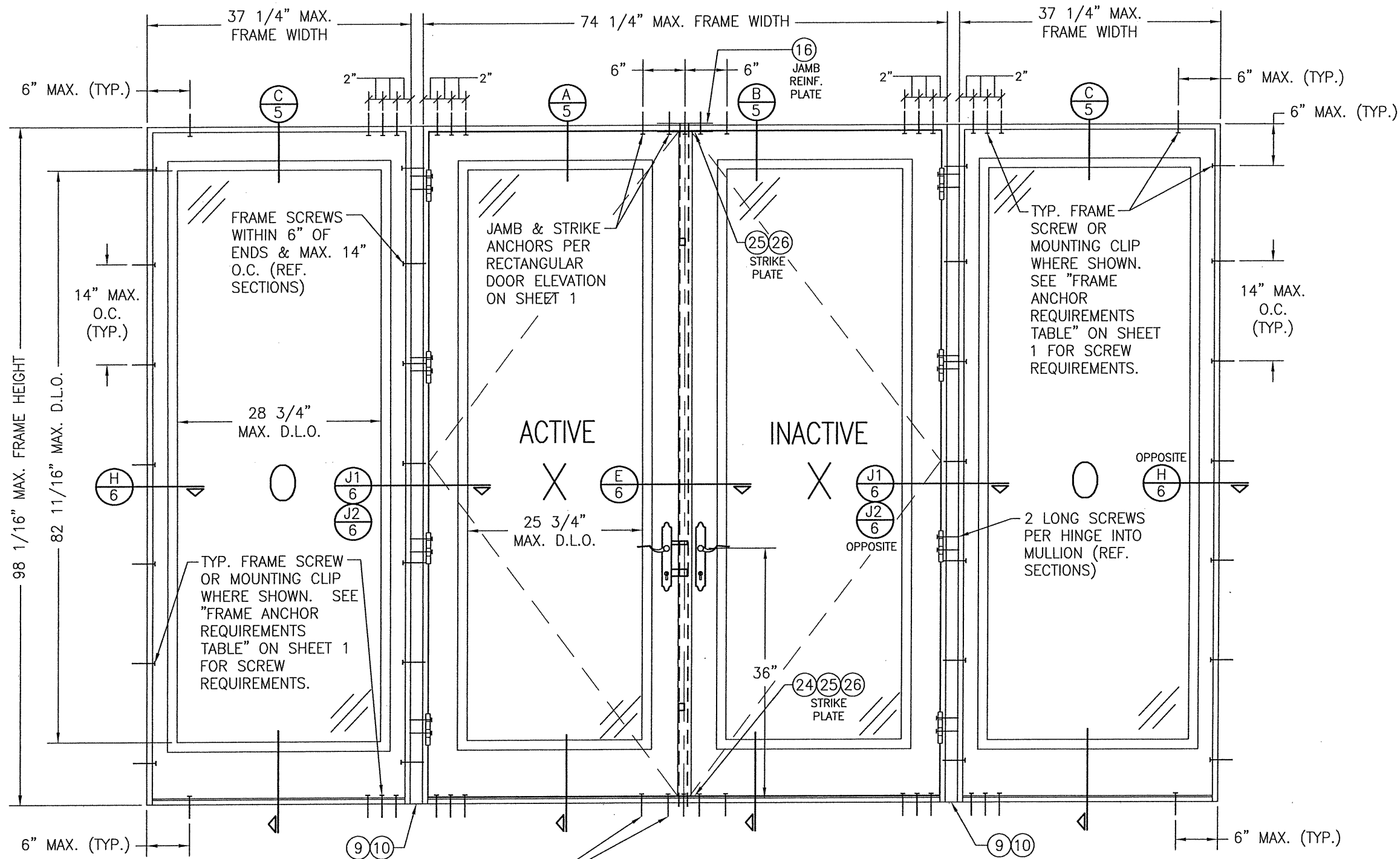
HINGE SCREW INTO
SUBSTRATE (2 PER
HINGE). SEE "FRAME
ANCHOR REQUIREMENTS
TABLE" ON THIS SHEET
FOR SCREW
REQUIREMENTS.



**SHAPES CONSIDERED AS
PART OF THIS APPROVAL**

NOTE: DOORS MAY BE FULLY
GLAZED AS SHOWN, PARTIALLY
PANELED OR FULLY PANELED.
SEE SHEET 4 ELEVATION FOR
PANELED DOORS.

DRAWN BY: W.R.M.	CHECKED BY: W.W.S.
PLOT: 1-16	DATE: 10/31/11
DATE	
BY	
REVISION DESCRIPTION	
NO.	
DRAWING TITLE 8 FOOT WOOD INSWING IMPACT DOORS	
CONSULTANTS W. W. SCHAEFER ENGINEERING & CONSULTING, P.A. (CA 6809)	MANUFACTURER SIGNATURE DOOR INC. 401 PRIORITY STREET ALTOONA, PA 16602 814-949-2770
7480 150TH COURT NORTH PALM BEACH GARDENS, FL 33418 PHONE: 561-744-3424	
CERTIFICATION STATE OF FLORIDA PROFESSIONAL ENGINEER WARREN W. SCHAEFER LICENSE No. 44135 AUG 10 2020	P.E. WARREN W. SCHAEFER P.E. NO. 44135
DRAWING NO. 1779	REV. C
SHEET NO. 2 OF 11	

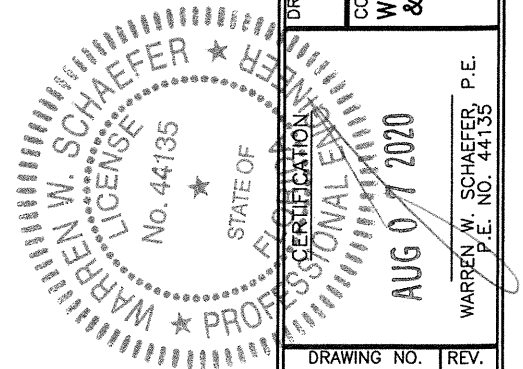


**INTERIOR ELEVATION
MULTIPLE OPERABLE/FIXABLE UNIT**

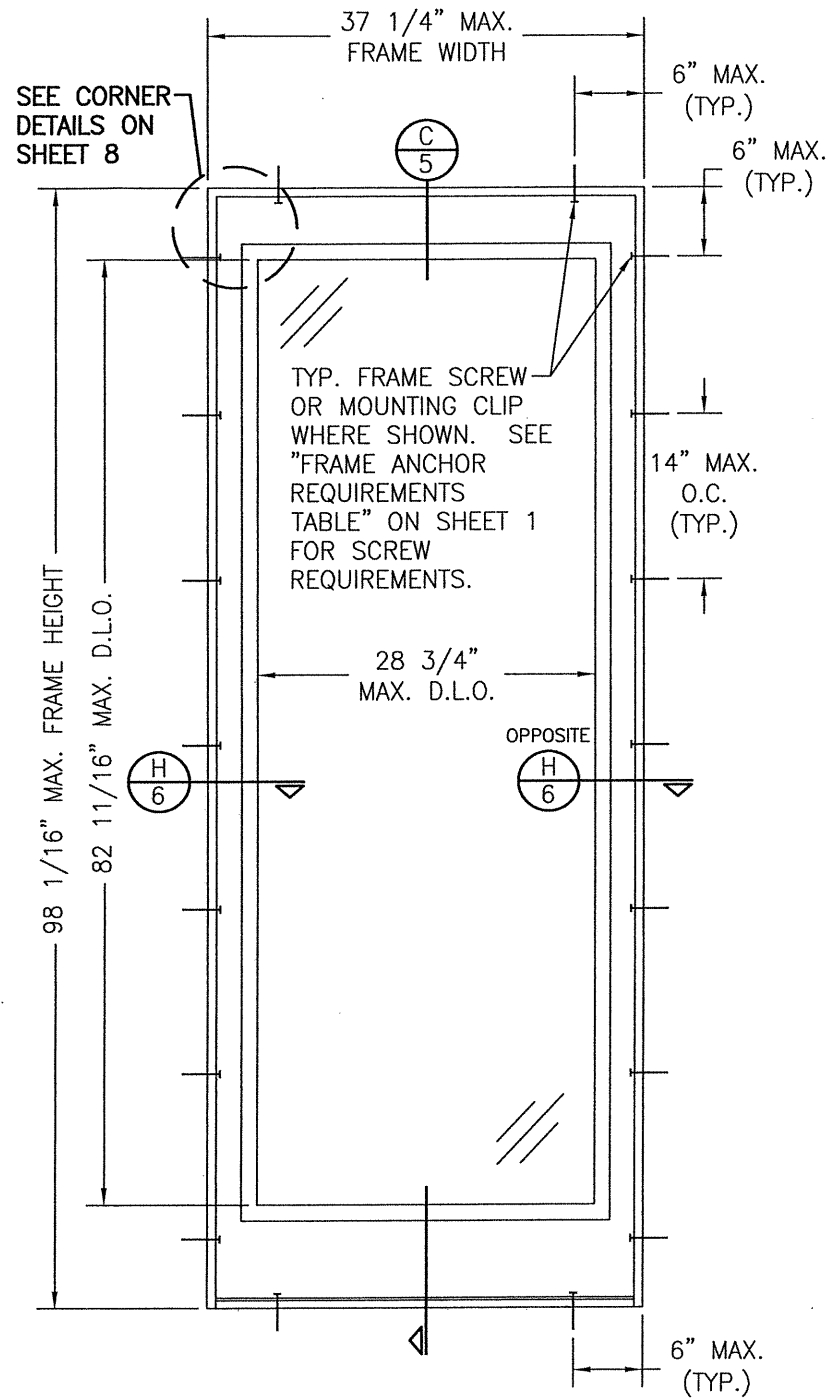
SCALE: 3/4"=1'-0"
 (FOR ANY DETAIL NOT SHOWN, SEE ELEVATION ON SHEET 1)
 NOTE: OXOXO DOOR SHOWN. ALL OTHER 4-PANEL CONFIGURATIONS
 OF SINGLE/DOUBLE DOORS & SIDELIGHTS ALSO APPLY.

NOTE: DOORS MAY BE FULLY
 GLAZED AS SHOWN, PARTIALLY
 PANELED OR FULLY PANELED.
 SEE SHEET 4 ELEVATION FOR
 PANELED DOORS.

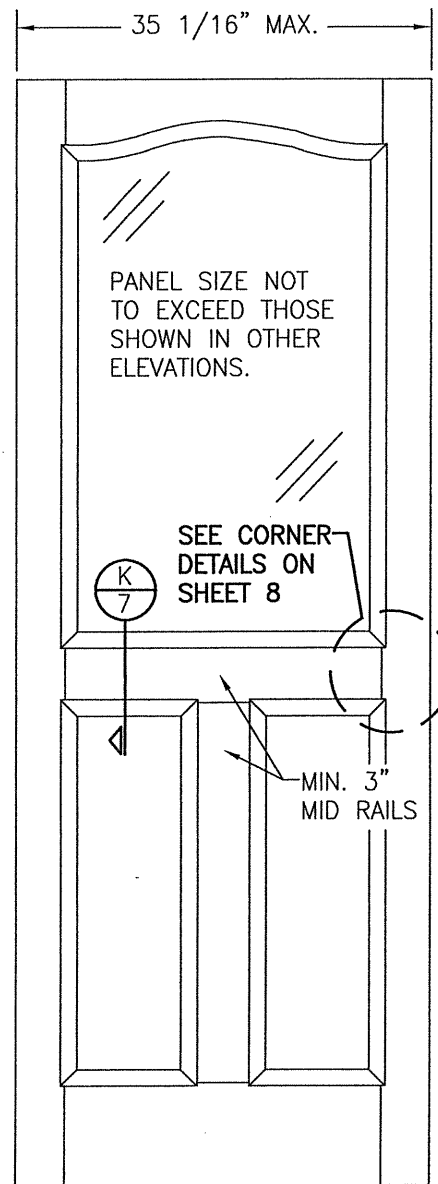
SILL AND STRIKE
 PLATE ANCHORS
 PER ELEVATION ON
 SHEET 1



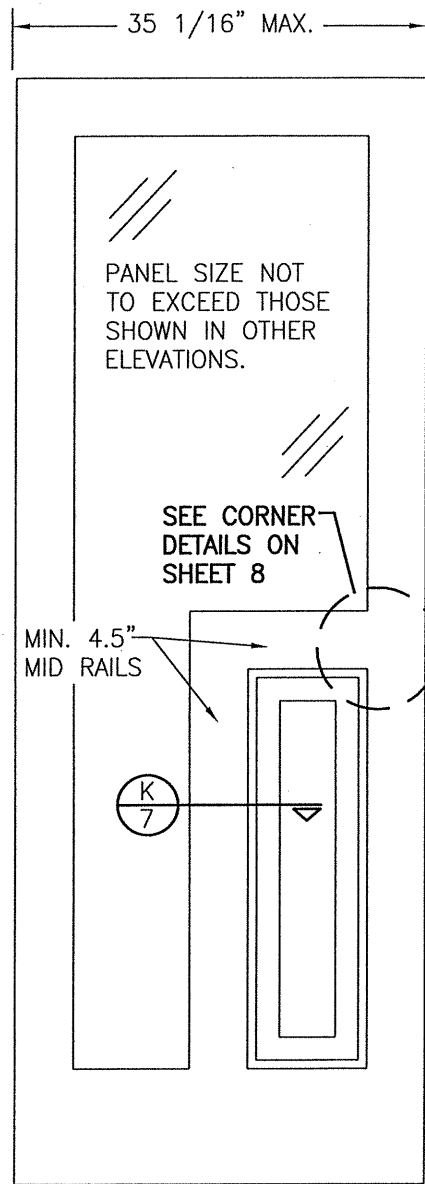
DRAWN BY: W.R.M.		CHECKED BY: W.W.S.	
PLOT: 1=16		DATE: 10/31/11	
NO.	REVISION	DESCRIPTION	DATE
DRAWING TITLE 8 FOOT WOOD INSWING IMPACT DOORS		MANUFACTURER SIGNATURE DOOR INC. 401 PRIORITY STREET ALTOONA, PA 16602 814-949-2770	
CONSULTANTS W. W. SCHAEFER ENGINEERING & CONSULTING, P.A. (CA 6809) 7480 150TH COURT NORTH PALM BEACH GARDENS, FL 33418 PHONE: 561-744-3424		P.E. WARREN W. SCHAEFER P.E. NO. 44135	
DRAWING NO.	REV.	DATE	
1779	C	AUG 07 2020	
SHEET NO.		REV.	
3 OF 11			



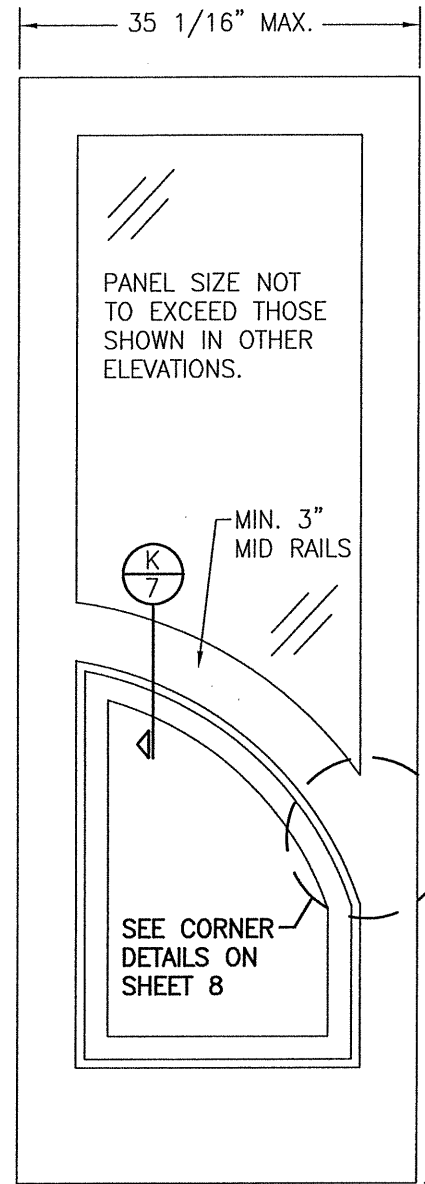
**INTERIOR ELEVATION
SINGLE FIXED PANEL**
SCALE: 3/4"=1'-0"



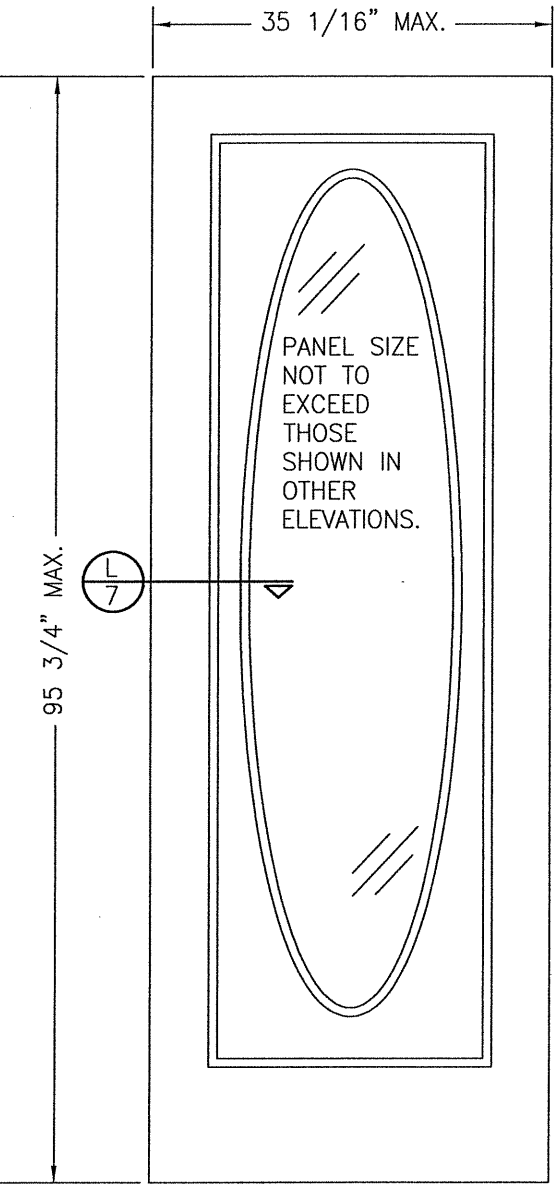
**INTERIOR ELEVATION SOLID
RAISED PANEL WITH
STANDARD MID RAILS**
SCALE: 3/4"=1'-0"



**INTERIOR ELEVATION SOLID
RAISED PANEL WITH
CORNERED MID RAILS**
SCALE: 3/4"=1'-0"



**INTERIOR ELEVATION
SOLID RAISED PANEL WITH
ARCHED/SHAPED MID RAILS**
SCALE: 3/4"=1'-0"

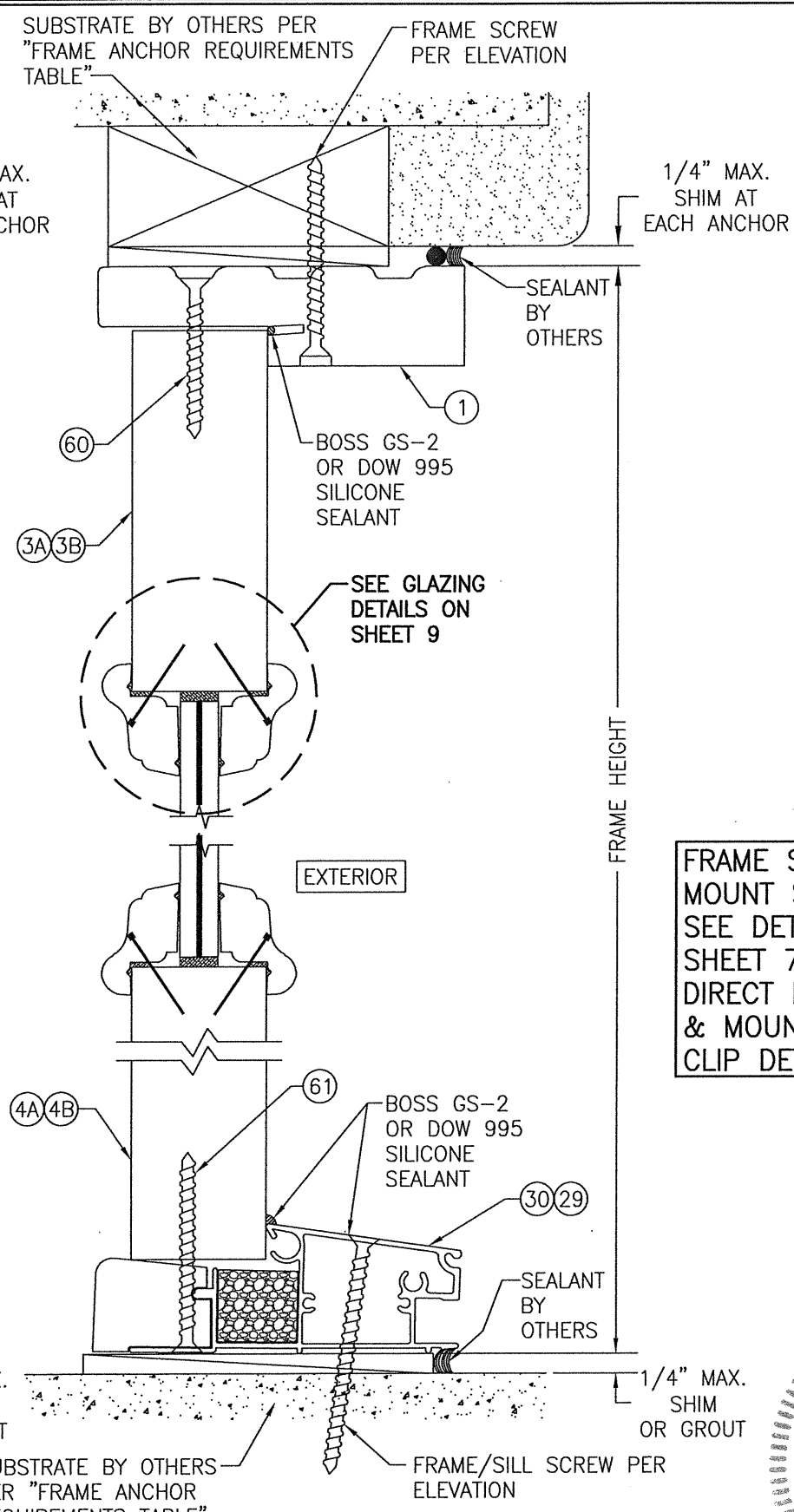
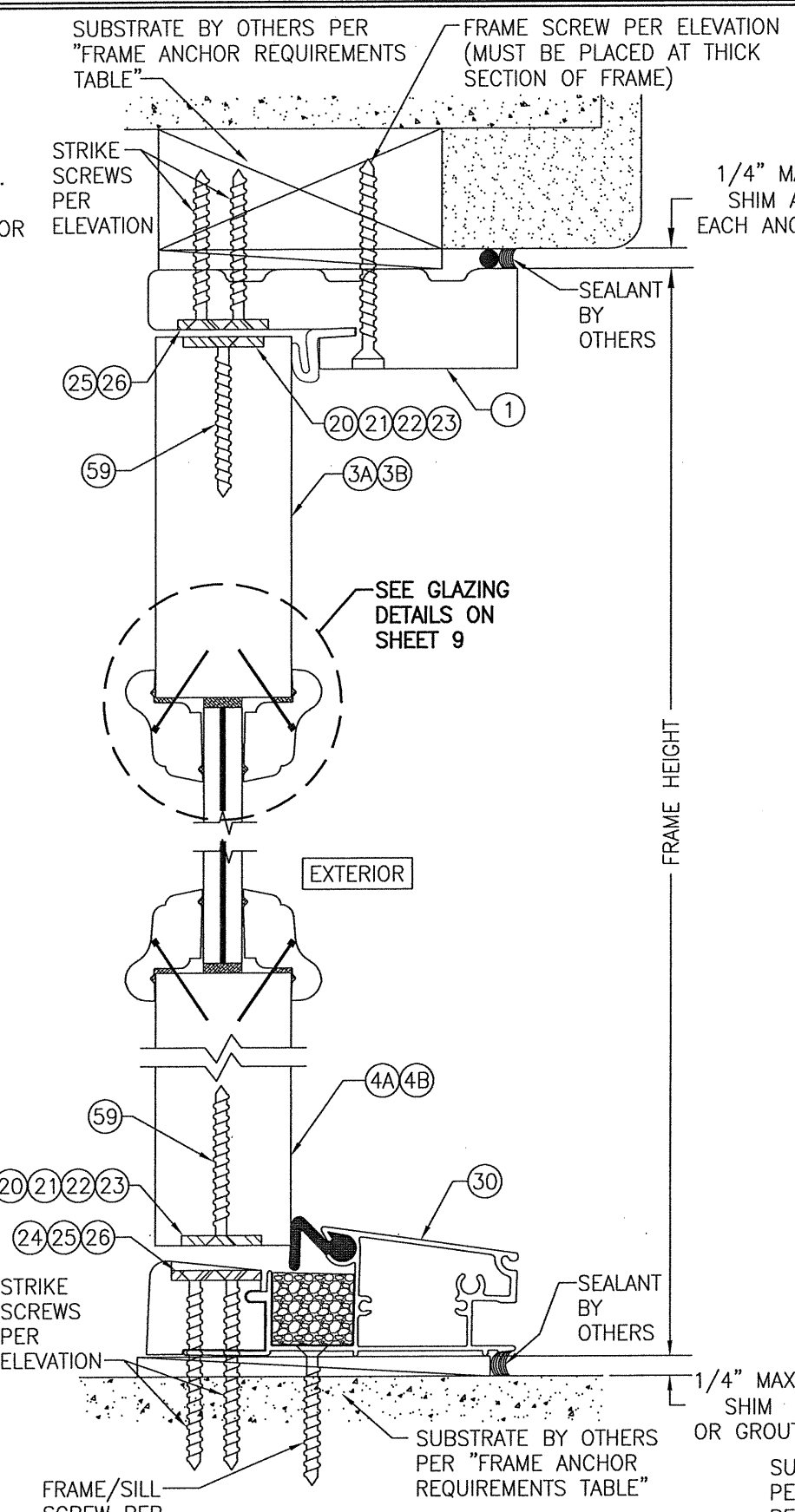
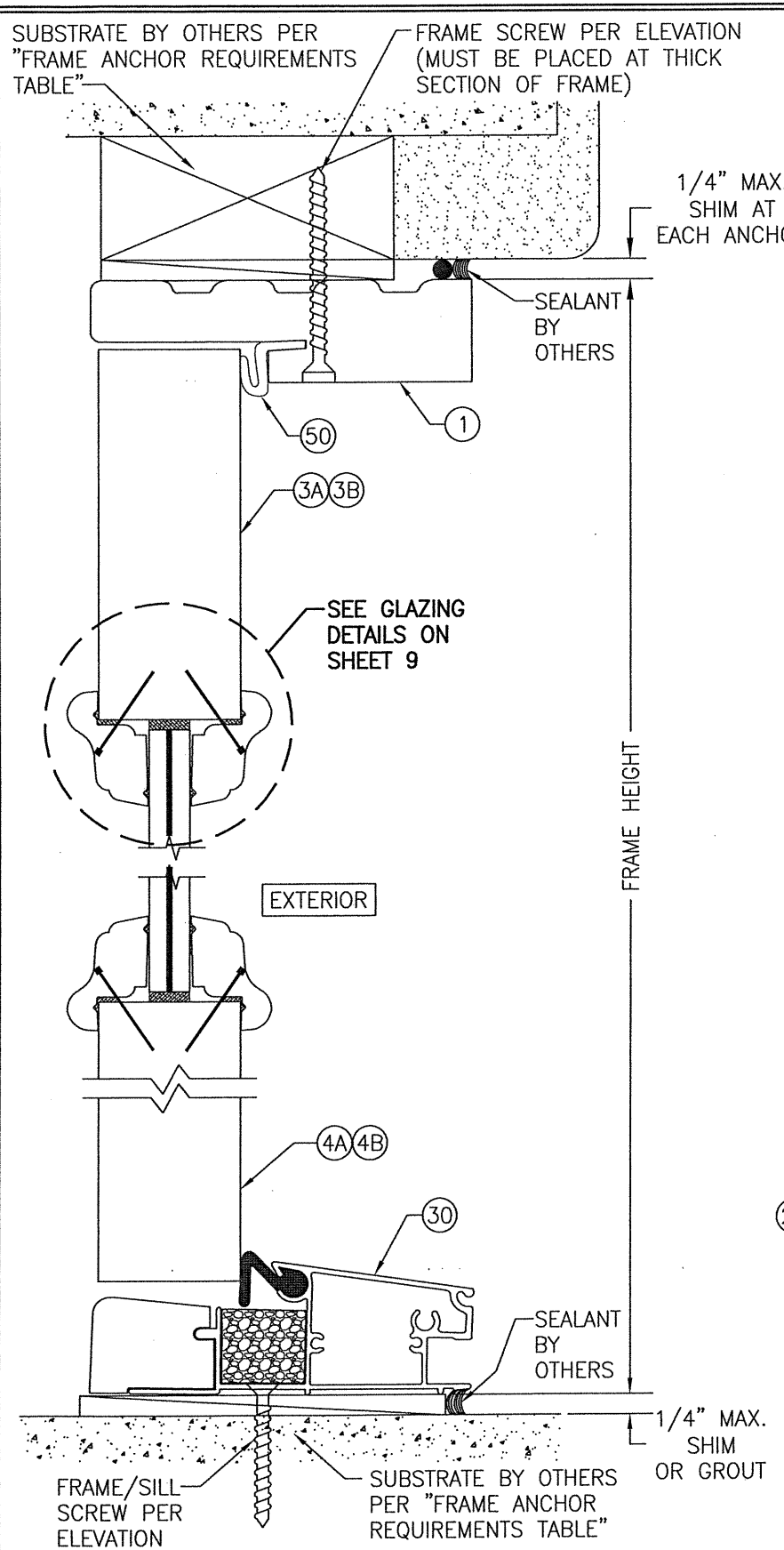


**INTERIOR ELEVATION
RAISED PANEL WITH GLASS
GLAZED TO PANEL**
SCALE: 3/4"=1'-0"

- 1) TOP & MID RAILS MAY BE OF ANY CONFIGURATION PROVIDING THE SMALLEST CROSS SECTION OF RAILS IS EQUAL TO OR LARGER THAN THAT DETAILED IN DRAWINGS.
- 2) MULTIPLE MID RAIL (BOTH HORIZONTAL & VERTICAL) MAY BE USED WITH THESE PANELS.
- 3) PARTIAL PANEL CONDITION IS SHOWN ABOVE. FULL PANEL DOORS AND OTHER PANEL CONFIGURATIONS ARE ALSO PART OF THIS APPROVAL AND ARE SIMILAR IN CONSTRUCTION TO THAT SHOWN ABOVE.
- 4) PANEL ONLY IS SHOWN. FOR INSTALLATION INTO FRAME, SEE OTHER ELEVATIONS.

- 1) DAY LIGHT OPENING IN PANEL DOOR MAY BE OF ANY CONFIGURATION.
- 2) FULL LIGHT & OVAL CONDITION IS SHOWN. PARTIAL LIGHT & OTHER LIGHT CONFIGURATIONS ARE ALSO APPLICABLE PROVIDING PANEL CONDITIONS ARE WITHIN WHAT IS SPECIFIED IN THESE DRAWINGS.
- 3) PANEL ONLY IS SHOWN. FOR INSTALLATION INTO FRAME, SEE OTHER ELEVATIONS.

<small>DRAWN BY:</small> W.R.M.	<small>CHECKED BY:</small> W.W.S.	<small>PLOT:</small> 1=16	<small>DATE:</small> 10/31/11
<small>REVISION NO.</small>	<small>REVISION DESCRIPTION</small>	<small>DATE</small>	<small>BY</small>
8 FOOT WOOD INSWING IMPACT DOORS			
<small>CONSULTANTS</small> W. W. SCHAEFER ENGINEERING & CONSULTING, P.A. (CA 6809)		<small>MANUFACTURER</small> SIGNATURE DOOR INC.	
<small>7480 150TH COURT NORTH PALM BEACH GARDENS, FL 33418 PHONE: 561-744-3424</small>		<small>401 PRIORITY STREET ALTOONA, PA 16602 814-949-2770</small>	
<small>DRAWING NO.</small> 1779		<small>REV.</small> C	
<small>SHEET NO.</small> 4 OF 11			



FRAME SCREW MOUNT SHOWN. SEE DETAILS ON SHEET 7 FOR DIRECT MOUNT & MOUNTING CLIP DETAILS.

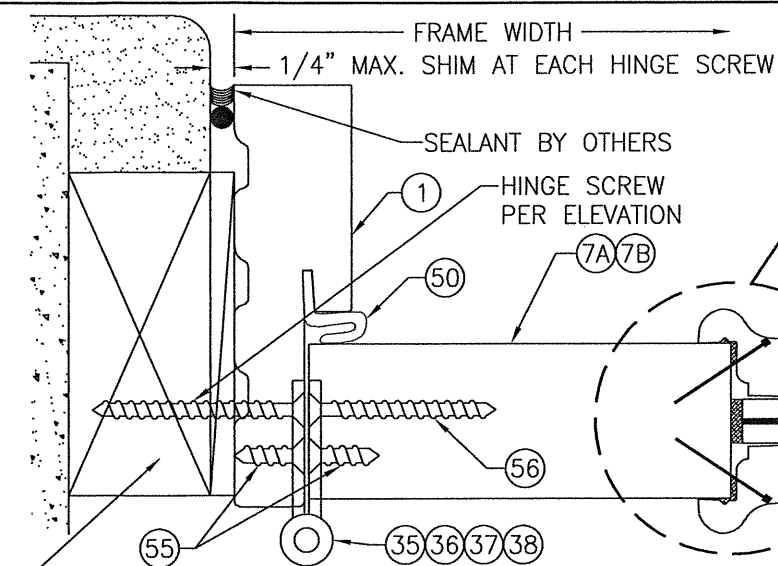
SECTION A
SCALE: 1/2 FULL
(STANDARD BUMPER THRESHOLD CONDITION SHOWN. SEE OTHER DETAILS ON SHEET 7 FOR ADA & OTHER THRESHOLD OPTIONS.)

SECTION B
SCALE: 1/2 FULL
(FOR DETAIL NOT SHOWN, SEE SECTION A/5) (STANDARD BUMPER THRESHOLD CONDITION SHOWN. SEE OTHER DETAILS ON SHEET 7 FOR ADA & OTHER THRESHOLD OPTIONS.)

SECTION C
SCALE: 1/2 FULL
(STANDARD BUMPER THRESHOLD CONDITION SHOWN. SEE OTHER DETAILS ON SHEET 7 FOR ADA & OTHER THRESHOLD OPTIONS.)

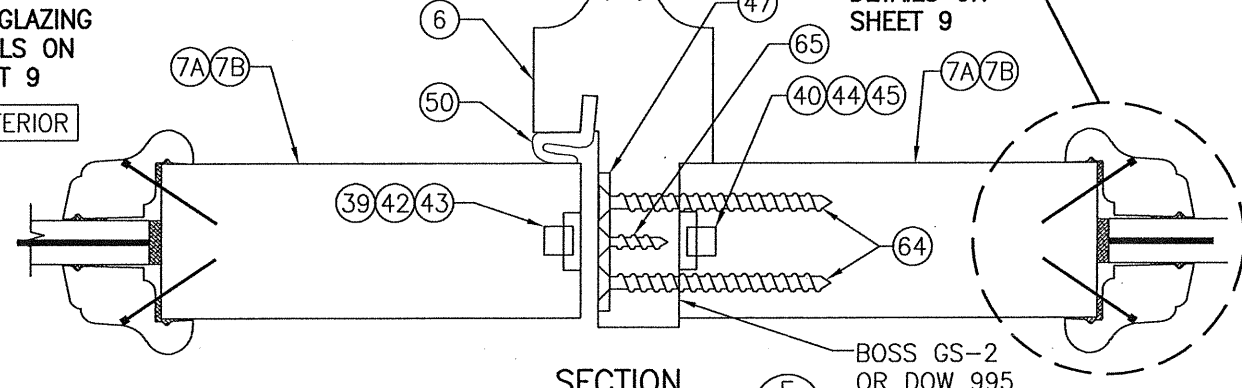
DRAWN BY: W.R.M.		CHECKED BY: W.W.S.	
PLOT: 1=2		DATE: 10/31/11	
NO.	REVISION	DESCRIPTION	DATE
DRAWING TITLE: 8 FOOT WOOD INSWING IMPACT DOORS			
MANUFACTURER: SIGNATURE DOOR INC. 401 PRIORITY STREET ALTOONA, PA 16602 814-949-2770			
CONSULTANTS: W. W. SCHAEFER ENGINEERING & CONSULTING, P.A. (CA 6809) 7480 150TH COURT NORTH PALM BEACH GARDENS, FL 33418 PHONE: 561-744-3424			
CERTIFICATION: STATE OF FLORIDA PROFESSIONAL ENGINEER AUG 17 2020 WARREN W. SCHAEFER P.E. LICENSE No. 44135 P.E. NO. 44135			
DRAWING NO. 1779		REV. C	
SHEET NO. 5 OF 11			

FRAME SCREW MOUNT SHOWN. SEE DETAILS ON SHEET 7 FOR DIRECT MOUNT & MOUNTING CLIP DETAILS.



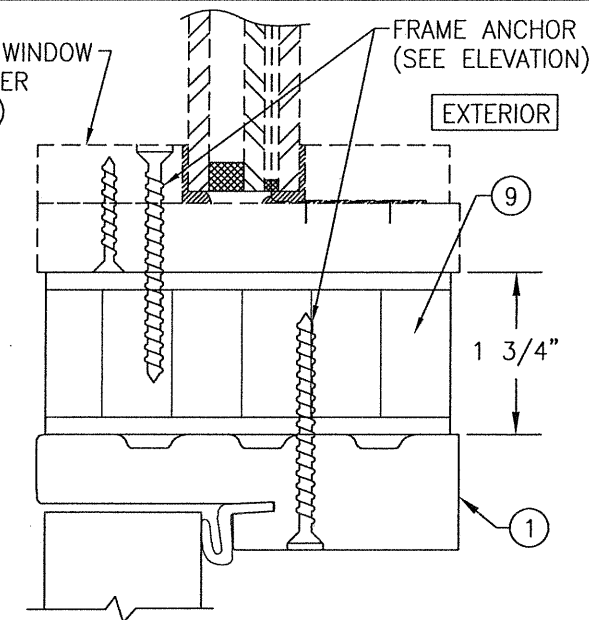
SECTION D
SCALE: 1/2 FULL 6

SEE GLAZING DETAILS ON SHEET 9

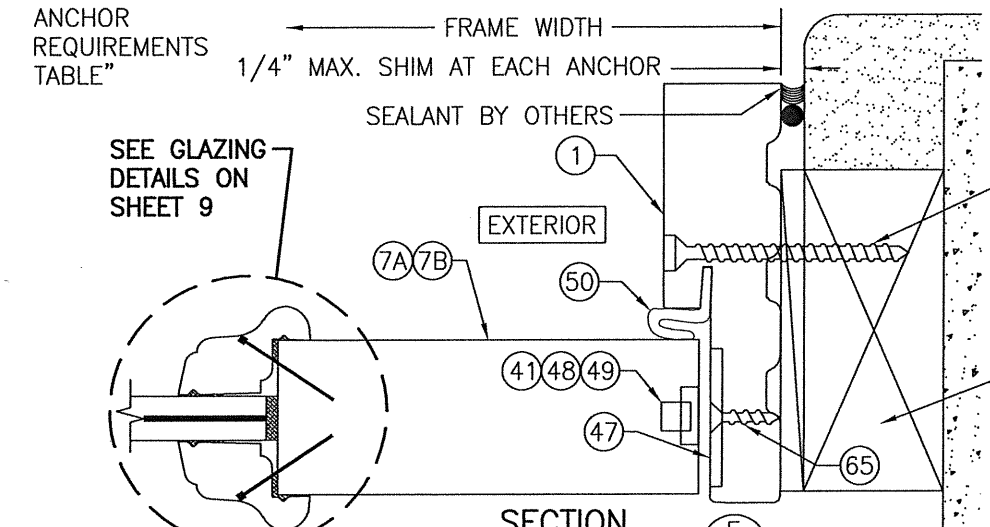


SECTION E
SCALE: 1/2 FULL 6

TRANSOM WINDOW (REF. OTHER APPROVAL)



SECTION G1
SCALE: 1/2 FULL 6
FOR DETAIL NOT SHOWN, SEE OTHER SECTIONS

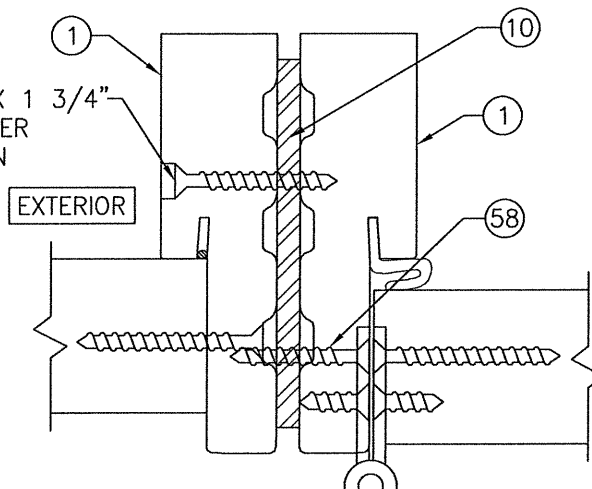


SECTION F
SCALE: 1/2 FULL 6

FRAME SCREW PER ELEVATION (MAY BE PLACED AT THIN OR THICK SECTION OF FRAME)

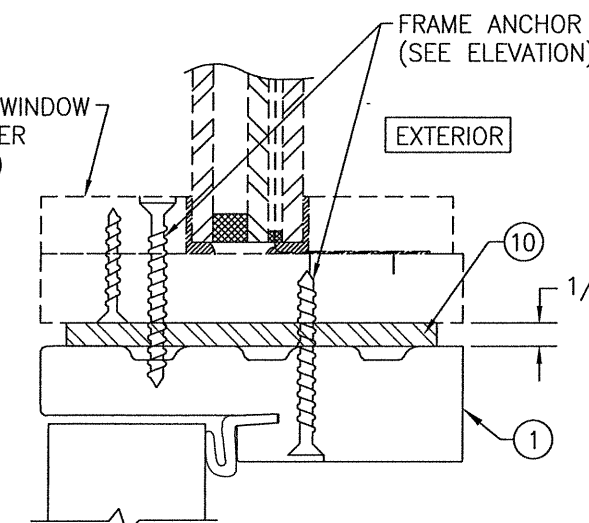
SUBSTRATE BY OTHERS PER "FRAME ANCHOR REQUIREMENTS TABLE"

NO. 10 X 1 3/4" SCREW PER ELEVATION



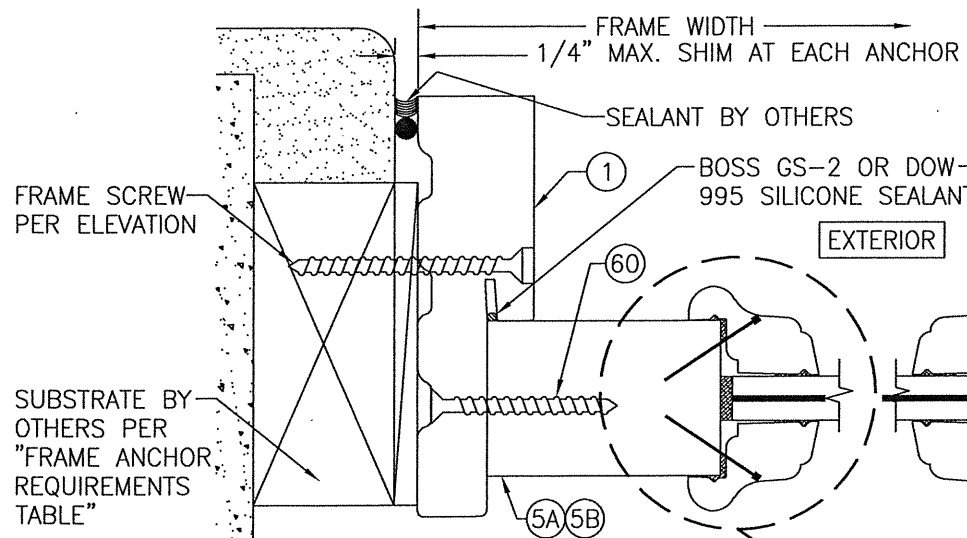
SECTION J2
SCALE: 1/2 FULL 6
FOR DETAIL NOT SHOWN, SEE OTHER SECTIONS

TRANSOM WINDOW (REF. OTHER APPROVAL)



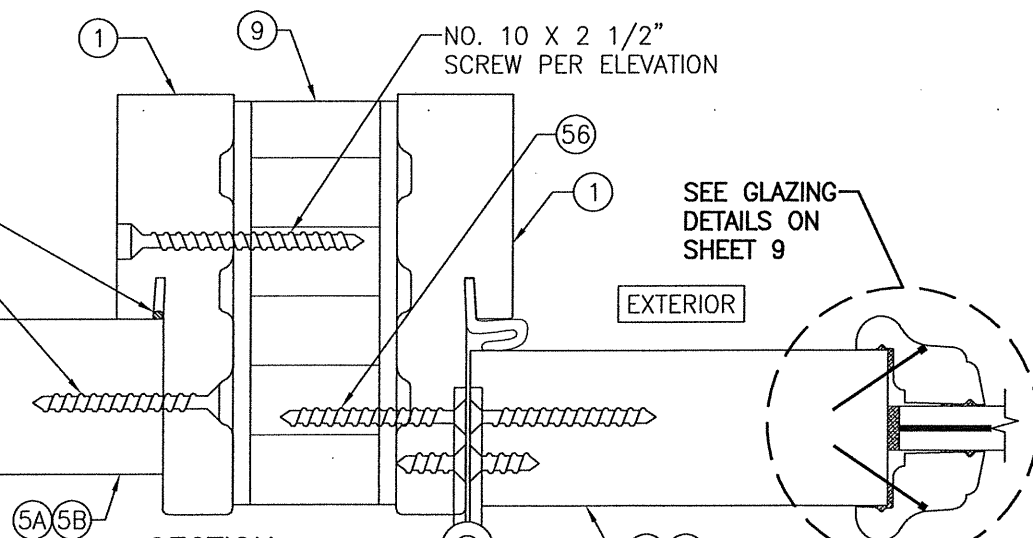
SECTION G2
SCALE: 1/2 FULL 6
FOR DETAIL NOT SHOWN, SEE OTHER SECTIONS

NOTE: SHOWN WITH MULTI-POINT LOCK HARDWARE. SINGLE POINT MORTISE LOCK ALSO MAY BE USED AT SINGLE DOORS PER SHEET 1.



SECTION H
SCALE: 1/2 FULL 6

SEE GLAZING DETAILS ON SHEET 9



SECTION J1
SCALE: 1/2 FULL 6
FOR DETAIL NOT SHOWN, SEE OTHER SECTIONS

SEE GLAZING DETAILS ON SHEET 9

DRAWN BY: W.R.M.	CHECKED BY: W.W.S.
PLOT: 1=2	DATE: 10/31/11
DATE	
BY	
REVISION DESCRIPTION	
NO.	

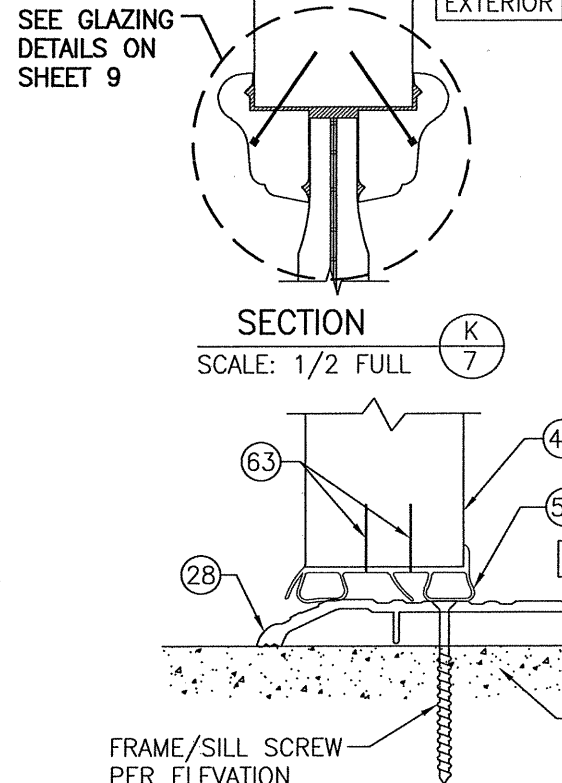
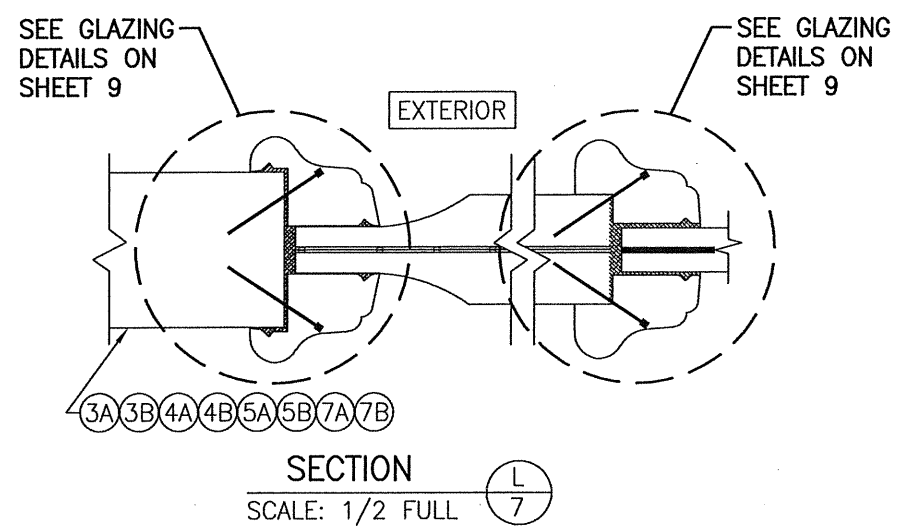
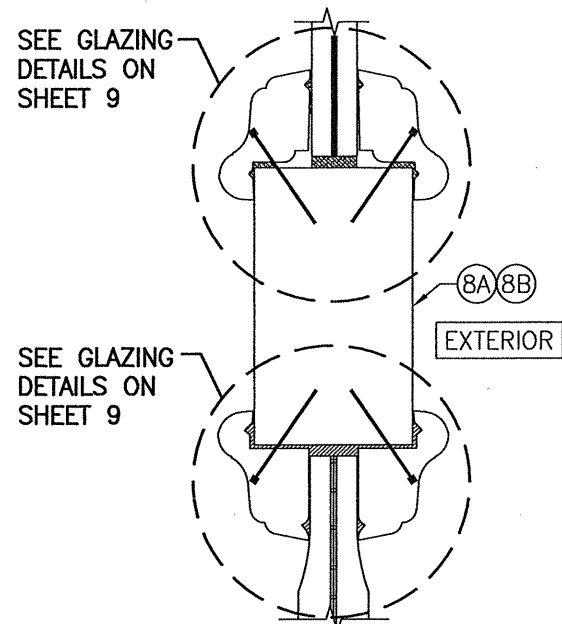
8 FOOT WOOD INSWING IMPACT DOORS

MANUFACTURER
SIGNATURE DOOR INC.
401 PRIORITY STREET
ALTOONA, PA 16602
814-949-2770

CONSULTANTS
W. W. SCHAEFER ENGINEERING & CONSULTING, P.A. (CA 6809)
7480 150TH COURT NORTH
PALM BEACH GARDENS, FL 33418
PHONE: 561-744-3424

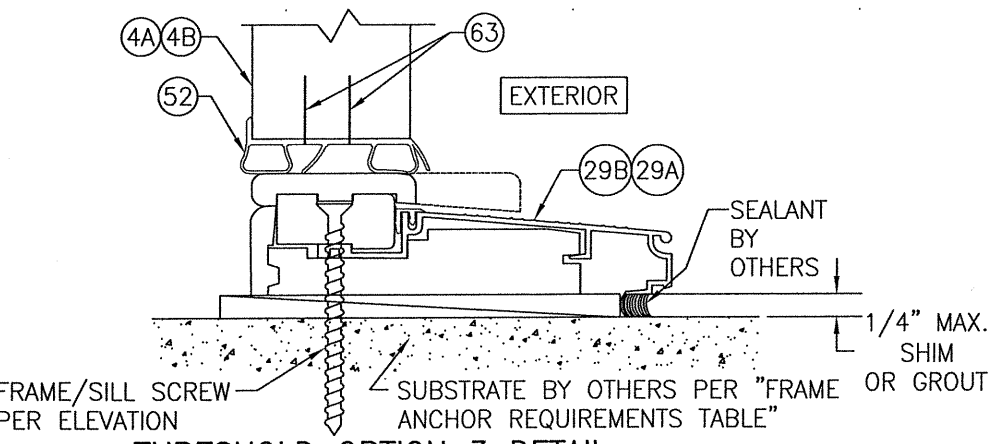
WARREN W. SCHAEFER
No. 44135
STATE OF FLORIDA
PROFESSIONAL ENGINEER
AUG 07 2020
WARREN W. SCHAEFER, P.E.
P.E. NO. 44135

DRAWING NO. 1779	REV. C
SHEET NO. 6	OF 11

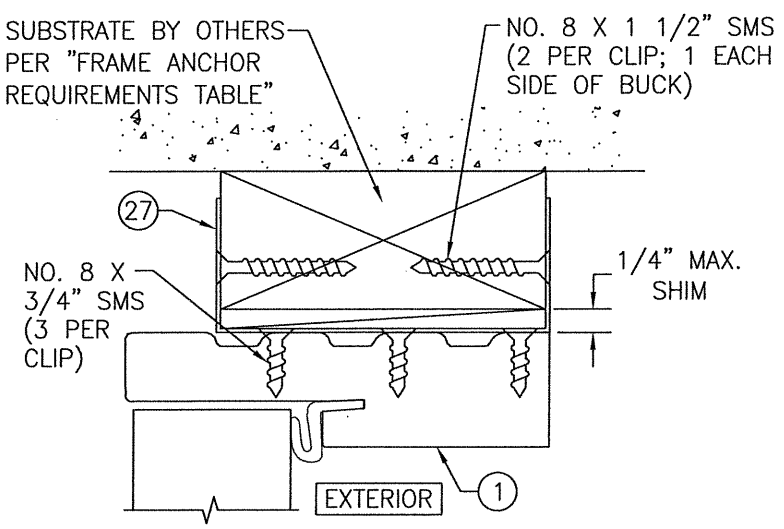


ADA THRESHOLD OPTION 2 DETAIL
FOR DETAIL & REINFORCEMENT PLATES NOT SHOWN, SEE SECTIONS A/5, B/5 & C/5

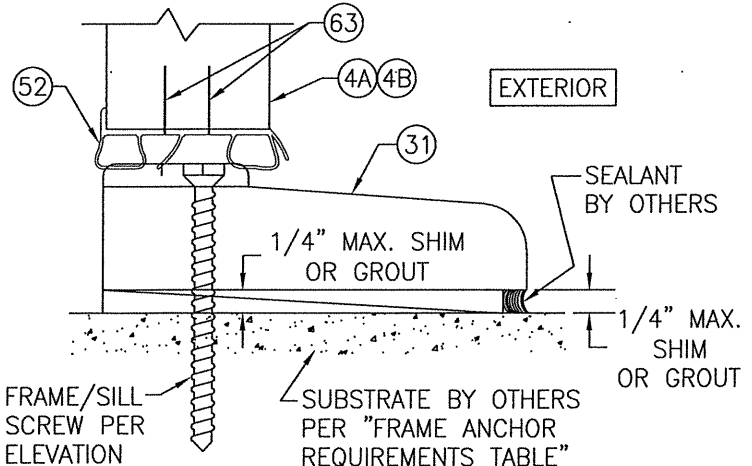
NOTE: WHEN THE ADA THRESHOLD IS USED, THE DOOR UNITS ARE NOT APPROVED FOR USE WHERE WATER INFILTRATION RESISTANCE IS REQUIRED BY THE DOOR UNLESS THE UNITS ARE INSTALLED IN NON-HABITABLE AREAS WHERE THE UNIT & THE AREA ARE DESIGNED TO ACCEPT WATER INFILTRATION OR THE UNITS ARE INSTALLED AT LOCATIONS PROTECTED BY A CANOPY OR OVERHANG WHERE-BY THE OVERHANG(OH) RATIO IS EQUAL TO OR MORE THAN 1.0 PER FBC.



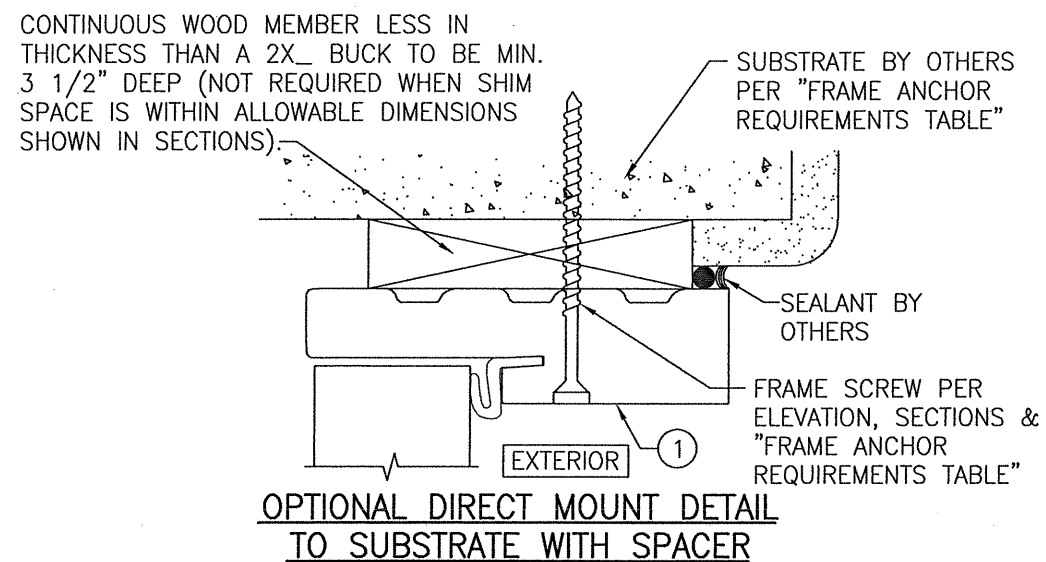
THRESHOLD OPTION 3 DETAIL
FOR DETAIL & STRIKE/REINFORCEMENT PLATES NOT SHOWN, SEE SECTIONS A/5, B/5 & C/5



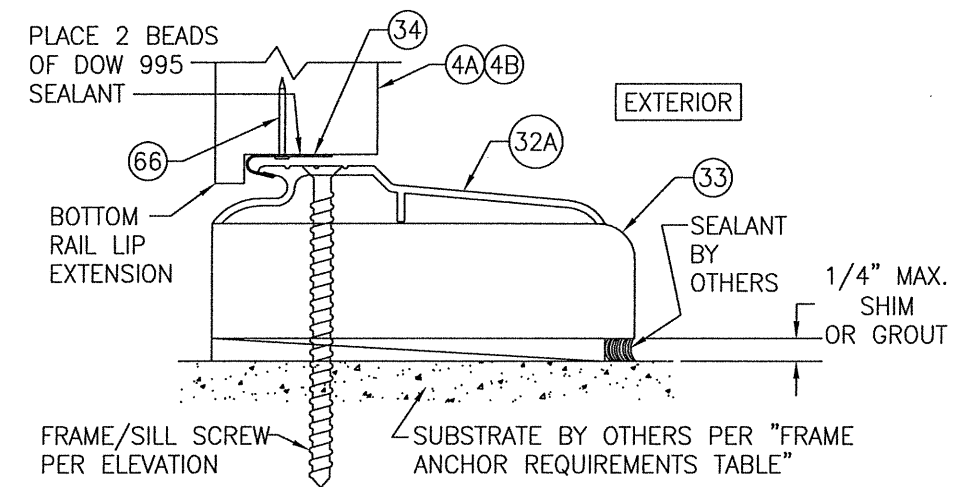
OPTIONAL CLIP MOUNT DETAIL
FOR DETAIL NOT SHOWN, SEE OTHER SECTIONS (HEAD SECTION SHOWN, SIDES AND SILL SIMILAR)



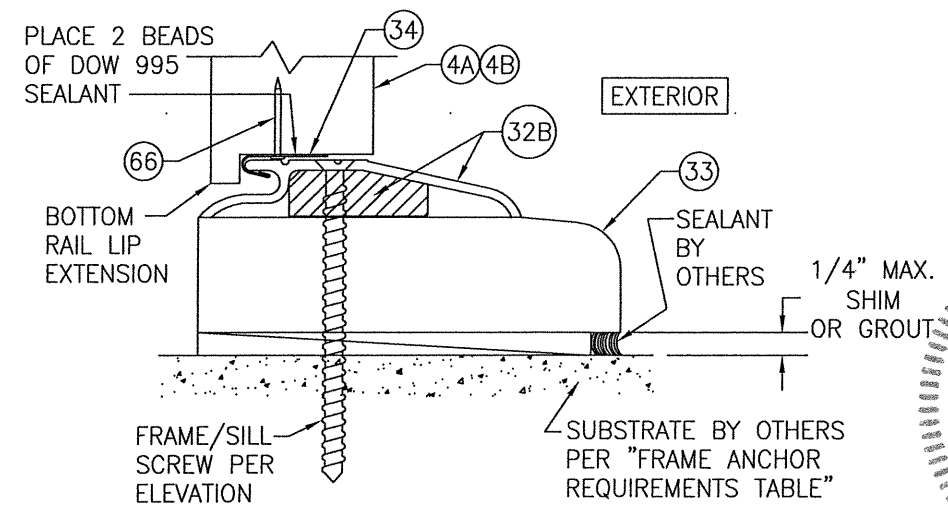
THRESHOLD OPTION 4 DETAIL
FOR DETAIL & STRIKE/REINFORCEMENT PLATES NOT SHOWN, SEE SECTIONS A/5, B/5 & C/5



(HEAD SECTION SHOWN; SILL & SIDES ARE INSTALLED THE SAME)
(FOR DETAIL NOT SHOWN, SEE OTHER SECTIONS)

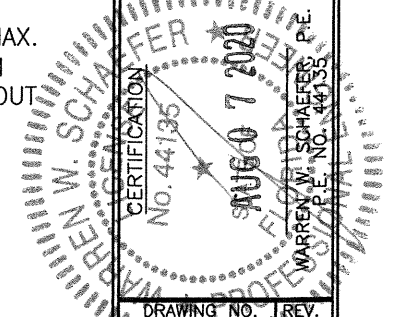


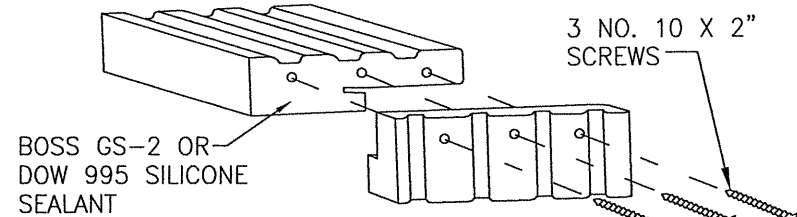
THRESHOLD OPTION 5 DETAIL
FOR DETAIL & REINFORCEMENT PLATES NOT SHOWN, SEE SECTIONS A/5, B/5 & C/5



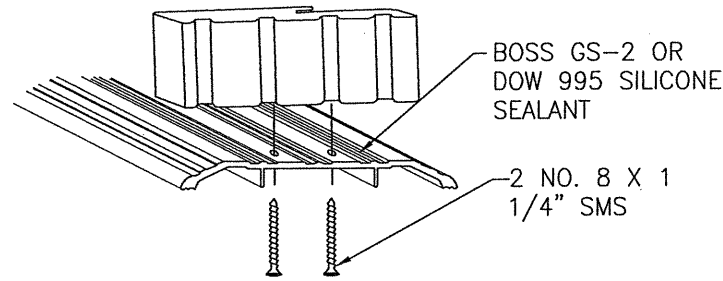
THRESHOLD OPTION 6 DETAIL
FOR DETAIL & REINFORCEMENT PLATES NOT SHOWN, SEE SECTIONS A/5, B/5 & C/5

DRAWN BY: W.R.M.	CHECKED BY: W.W.S.
PLOT: 1=2	DATE: 10/31/11
DATE	
BY	
REVISION DESCRIPTION	
NO.	
DRAWING TITLE 8 FOOT WOOD INSWING IMPACT DOORS	
CONSULTANTS W. W. SCHAEFER ENGINEERING & CONSULTING, P.A. (CA 6809)	
MANUFACTURER SIGNATURE DOOR INC.	
7480 150TH COURT NORTH PALM BEACH GARDENS, FL 33418 PHONE: 561-744-3424	
401 PRIORITY STREET ALTOONA, PA 16602 814-949-2770	
CERTIFICATION No. 44136	REV. C
DRAWING NO. 1779	SHEET NO. 7 OF 11

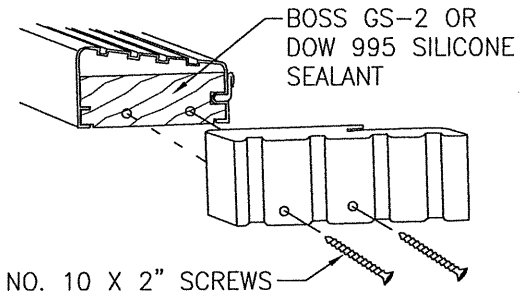




HEAD CORNER DETAIL
NOT TO SCALE



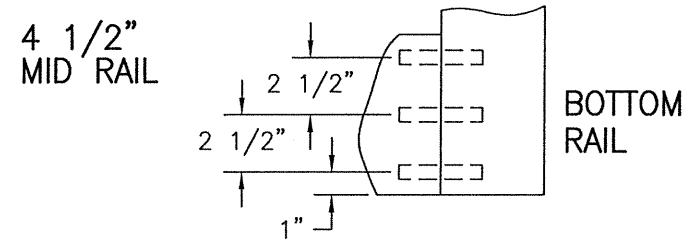
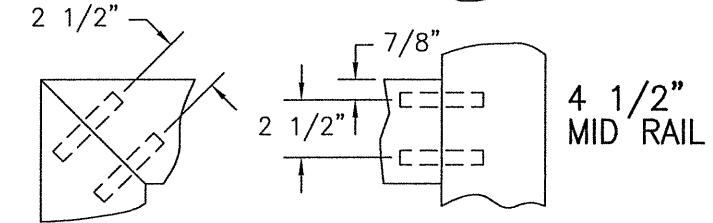
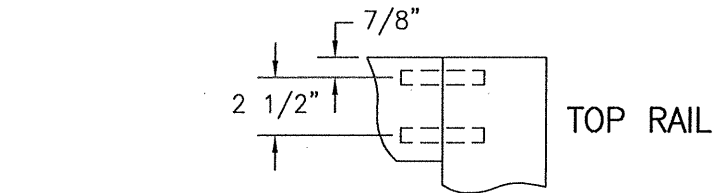
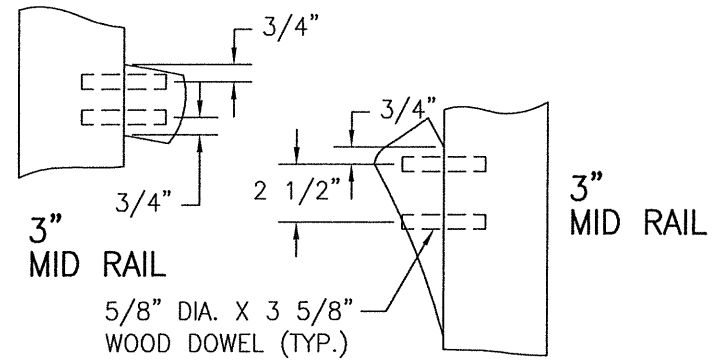
ADA SILL CORNER DETAIL
NOT TO SCALE



NO. 10 X 2" SCREWS
(2 INTO SCREW SPLINES WITH STANDARD BUMPER THRESHOLD; 2 INTO WOOD SECTION OF THRESHOLD OPTION 3; 3 INTO WOOD THRESHOLD OPTION 4; 3 INTO SUB-THRESHOLD OF THRESHOLD OPTIONS 5 & 6.)

SILL CORNER DETAIL (NON-ADA SILLS)
NOT TO SCALE

NOTE: WITH THRESHOLD OPTIONS 5 & 6, THE JAMBS BUTT TO AND ARE SCREWED TO THE SUB-THRESHOLD WHILE THE ALUMINUM/BRASS THRESHOLD BUTTS TO THE JAMBS AND IS SECURED TO THE SUB-THRESHOLD ONLY.

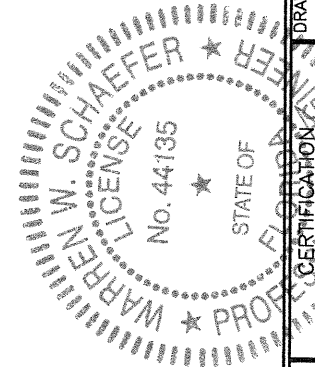


PANEL CORNER DETAILS
NOT TO SCALE

ALL DOWEL AND WOOD TO WOOD CONTACT SURFACES ARE FULLY GLUED WITH WOOD ADHESIVE BY JOWAT ADHESIVES, KORLOCK GT 42-300A OR TITEBOND II BY WEATHERPROOF.

DRAWN BY: W.R.M.	CHECKED BY: W.W.S.
PLOT: 1=2	DATE: 10/31/11
NO.	REVISION DESCRIPTION
DATE	BY

DRAWING TITLE 8 FOOT WOOD INSWING IMPACT DOORS	
CONSULTANTS W. W. SCHAEFER ENGINEERING & CONSULTING, P.A. (CA 6809)	MANUFACTURER SIGNATURE DOOR INC. 401 PRIORITY STREET ALTOONA, PA 16602 814-949-2770
7480 150TH COURT NORTH PALM BEACH GARDENS, FL 33418 PHONE: 561-744-3424	



WARREN W. SCHAEFER, P.E.
P.E. NO. 44135

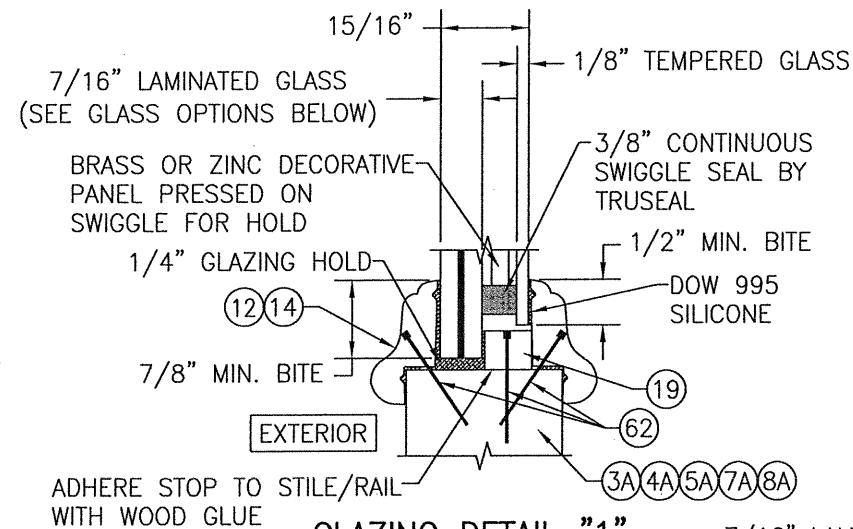
DRAWING NO. 1779	REV. C
SHEET NO. 8 OF 11	

**ALLOWABLE DESIGN PRESSURE
(ALL GLASS OPTIONS)**

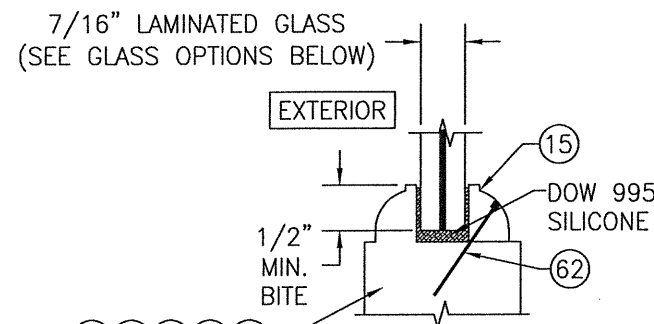
(1) +65/-80 PSF
(ALL DOOR SIZES)

NOTE: WHEN A SINGLE POINT MORTISE LOCK IS USED, THE ALLOWABLE DESIGN PRESSURE SHALL BE LIMITED TO THE LESSER OF +/-60 PSF OR THE APPLICABLE LOAD IN THE LOAD TABLE.

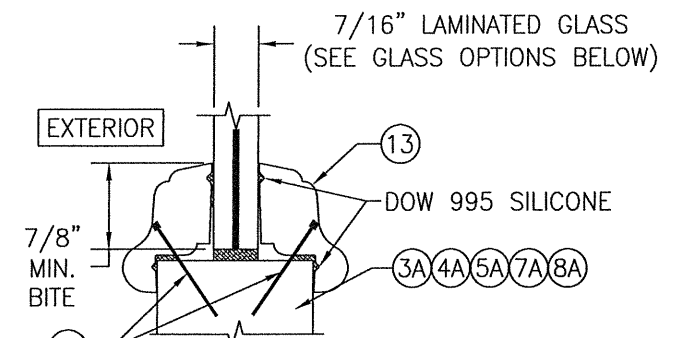
(1) POSITIVE PRESSURE NOTE: THESE DOORS ARE NOT APPROVED FOR WATER INFILTRATION RESISTANCE UNLESS THE UNITS ARE INSTALLED IN A NON-HABITABLE AREA WHERE THE UNIT AND THE AREA ARE DESIGNED TO ACCEPT WATER INFILTRATION. OTHERWISE, THE DOORS MUST BE INSTALLED ONLY AT LOCATIONS PROTECTED BY A CANOPY OR OVERHANG SUCH THAT THE ANGLE BETWEEN THE EDGE OF THE CANOPY OR OVERHANG TO SILL IS LESS THAN 45 DEGREES.



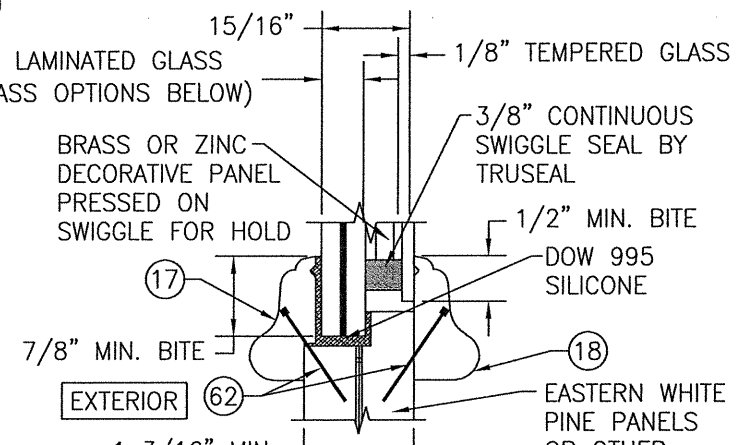
GLAZING DETAIL "1"
SCALE: 1/2 FULL



GLAZING DETAIL "3"
SCALE: 1/2 FULL



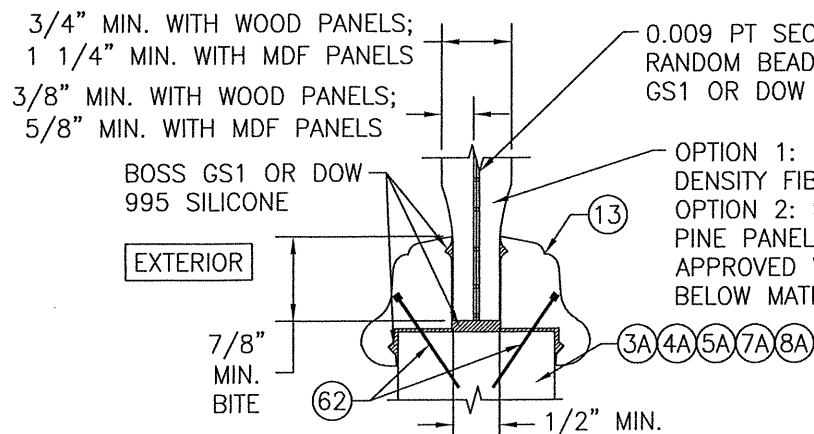
GLAZING DETAIL "2"
SCALE: 1/2 FULL



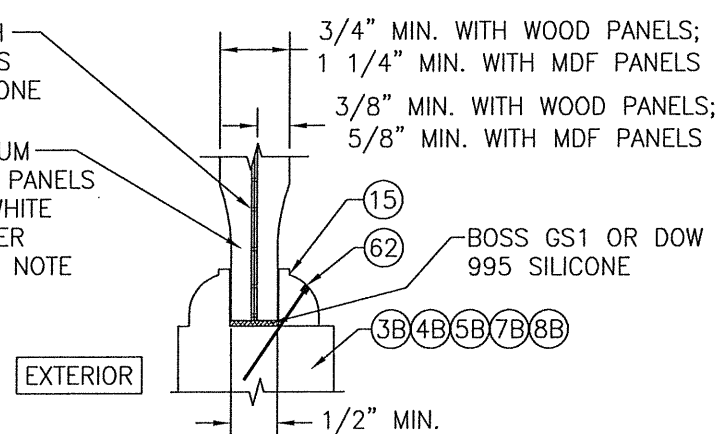
GLAZING DETAIL "4"
SCALE: 1/2 FULL

LAMINATED GLASS OPTIONS

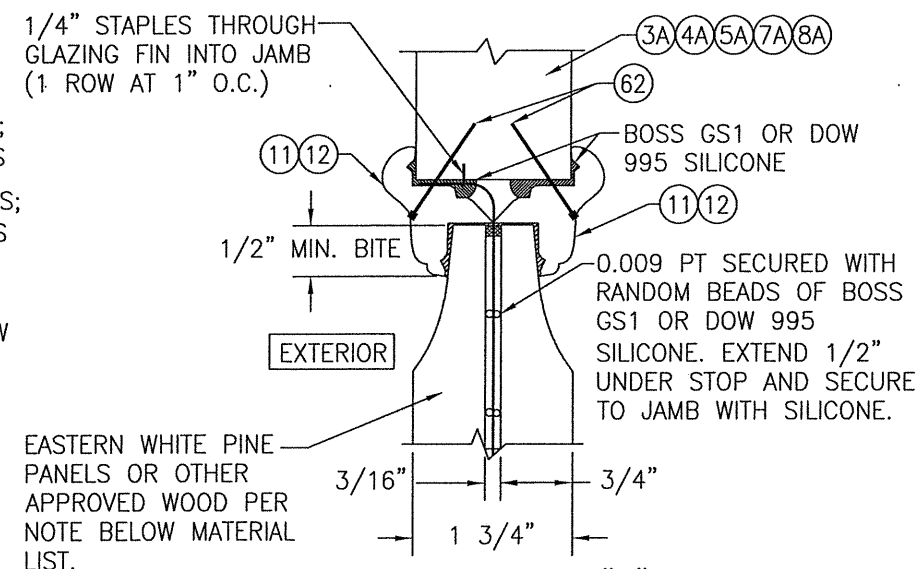
- OPTION 1: 7/16" THICK GLASSLAM SAFETY PLUS II LAMINATED GLASS (3/16" AN/0.1" POLYURETHANE POLYMER/3/16" AN)
- OPTION 2: 7/16" THICK LAMINATED GLASS (3/16" AN/0.075" EASTMAN CHEM. CO. SAFLEX CP/3/16" AN)
- OPTION 3: 7/16" THICK LAMINATED GLASS (3/16" AN/0.09" KURARAY SG/3/16" AN)



GLAZING DETAIL "6"
SCALE: 1/2 FULL

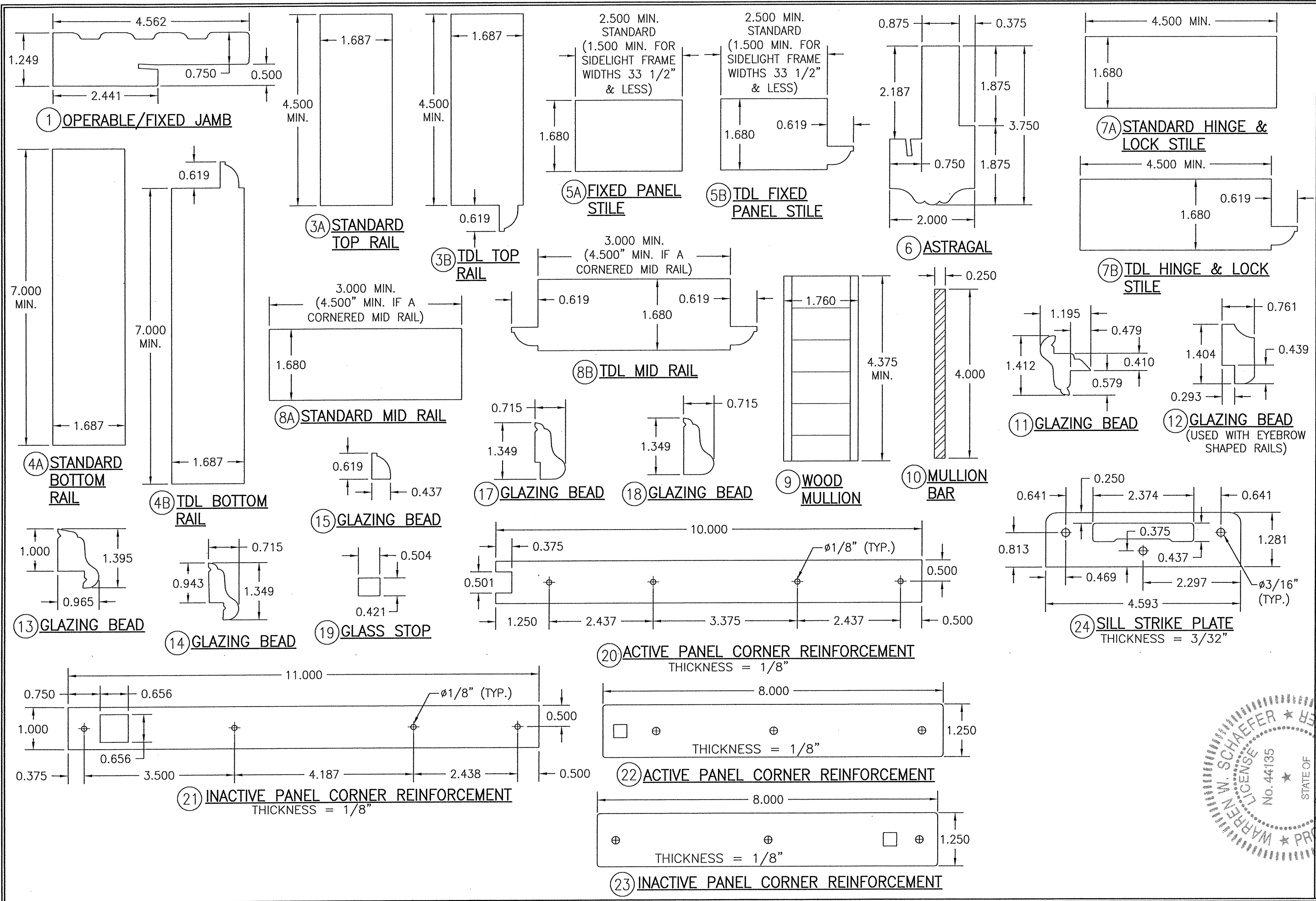


GLAZING DETAIL "7"
SCALE: 1/2 FULL



GLAZING DETAIL "8"

DRAWN BY: W.R.M.	CHECKED BY: W.W.S.
PLOT: 1=2	DATE: 10/31/11
NO.	REVISION DESCRIPTION
8 FOOT WOOD INSWING IMPACT DOORS	
MANUFACTURER	
SIGNATURE DOOR INC. 401 PRIORITY STREET ALTOONA, PA 16602 814-949-2770	
CONSULTANTS	
W. W. SCHAEFER ENGINEERING & CONSULTING, P.A. (CA 6809) 7480 150TH COURT NORTH PALM BEACH GARDENS, FL 33418 PHONE: 561-744-3424	
DRAWING TITLE	
DRAWING NO. 1779	
REV. C	
SHEET NO. 9 OF 11	

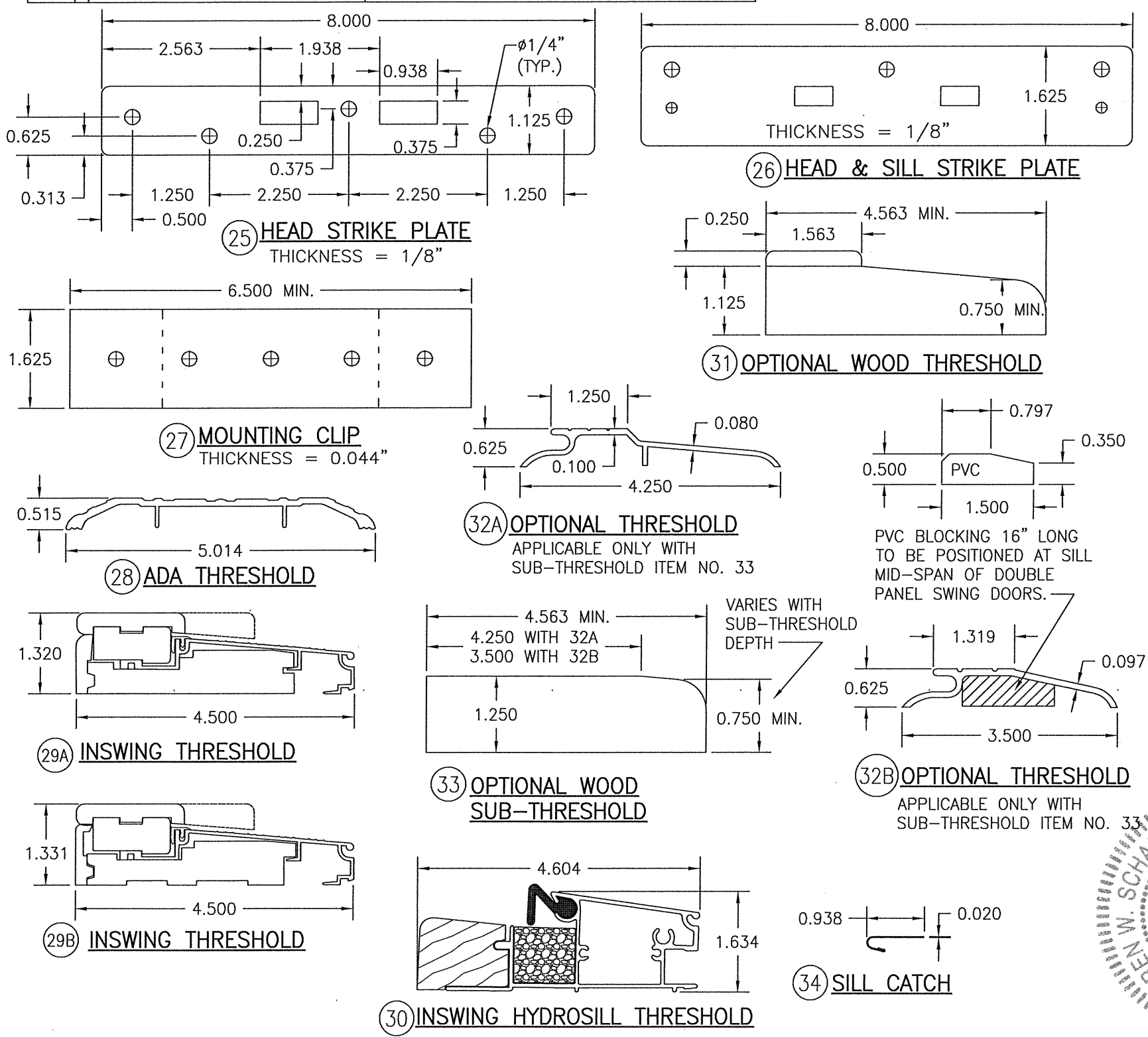


DRAWN BY: W.R.M.		CHECKED BY: W.W.S.	
PLOT: 1=2		DATE: 10/31/11	
NO.	REVISION DESCRIPTION	DATE	BY
DRAWING TITLE: 8 FOOT WOOD INSWING IMPACT DOORS			
CONSULTANTS: W. W. SCHAEFER ENGINEERING & CONSULTING, P.A. (CA 6809)			
MANUFACTURER: SIGNATURE DOOR INC. 401 PRIORITY STREET ALTOONA, PA 16602 814-949-2770			
DRAWING NO. 1779			
SHEET NO. 10 OF 11			
CERTIFICATION: WARREN W. SCHAEFER, P.E. LICENSE No. 44135, STATE OF PENNSYLVANIA, AUG 7 2020			

ITEM #	ITEM DESCRIPTION	MANUFACTURER/NOTES
PARTS		
1	OPERABLE/FIXED JAMB	* WOOD (LAMINATED WITH CURVED JAMBS)
3A	TOP RAIL	LVL OR LAMINATED RED OAK CORE (PINE VENEER)
3B	TDL TOP RAIL	LVL OR LAMINATED RED OAK CORE (PINE VENEER)
4A	BOTTOM RAIL	LVL OR LAMINATED RED OAK CORE (PINE VENEER)
4B	TDL BOTTOM RAIL	LVL OR LAMINATED RED OAK CORE (PINE VENEER)
5A	FIXED STILE	LVL OR LAMINATED RED OAK CORE (PINE VENEER)
5B	TDL FIXED STILE	LVL OR LAMINATED RED OAK CORE (PINE VENEER)
6	ASTRAGAL	* WOOD
7A	OPERABLE STILE	LVL OR LAMINATED RED OAK CORE (PINE VENEER)
7B	TDL OPERABLE STILE	LVL OR LAMINATED RED OAK CORE (PINE VENEER)
8A	MID-RAIL	LVL OR LAMINATED RED OAK CORE (PINE VENEER)
8B	TDL MID-RAIL	LVL OR LAMINATED RED OAK CORE (PINE VENEER)
9	WOOD MULLION	LVL OR LAMINATED RED OAK CORE (PINE VENEER)
10	MULLION BAR	A36 STEEL
11	GLAZING BEAD	* WOOD
12	GLAZING BEAD	* WOOD
13	GLAZING BEAD	* WOOD
14	GLAZING BEAD	* WOOD
15	GLAZING BEAD	* WOOD
16	JAMB REINF. PLATE (.044" X 4.00" X 8.00")	GALVANIZED STEEL (NOT REQ'D WITH CURVED JAMBS)
17	GLAZING BEAD	* WOOD
18	GLAZING BEAD	* WOOD
19	GLASS STOP	* WOOD
20	ACTIVE PANEL CORNER REINFORCEMENT	STAINLESS STEEL - TO BE USED WITH ANY OF THE LOCK SYSTEMS
21	INACTIVE PANEL CORNER REINFORCEMENT	STAINLESS STEEL - TO BE USED WITH ANY OF THE LOCK SYSTEMS
22	ACTIVE PANEL CORNER REINFORCEMENT	BRASS OR STAINLESS STEEL - TO BE ONLY USED WITH FUHR LOCKS (ITEMS 36B & 37B)
23	INACTIVE PANEL CORNER REINFORCEMENT	BRASS OR STAINLESS STEEL - TO BE ONLY USED WITH FUHR LOCKS (ITEMS 36B & 37B)
24	SILL STRIKE PLATE	STAINLESS STEEL - TO BE USED WITH ANY OF THE LOCK SYSTEMS
25	HEAD STRIKE PLATE	STAINLESS STEEL - TO BE USED WITH ANY OF THE LOCK SYSTEMS
26	HEAD & SILL STRIKE PLATE	BRASS OR STAINLESS STEEL - TO BE ONLY USED WITH FUHR LOCKS (ITEMS 36B & 37B)
27	MOUNTING CLIP	18 GA. GALVANIZED STEEL
28	ADA THRESHOLD	HAGAR 412S
29A	INSWING THRESHOLD	IMPERIAL 5QCW WITH WOOD BASE
29B	INSWING THRESHOLD	IMPERIAL 5KXDV WITH COMPOSITE BASE
30	INSWING HYDROSILL THRESHOLD (BUMPER)	SCHEGEL SERIES 5000
31	OPTIONAL WOOD THRESHOLD	OAK OR MAHOGANY
32A	OPTIONAL THRESHOLD	6063-T6 ALUMINUM OR BRASS
32B	OPTIONAL THRESHOLD	6063-T6 ALUMINUM OR BRASS
33	WOOD SUB-THRESHOLD	OAK OR MAHOGANY
34	SILL CATCH	ROLL FORMED BRONZE
HARDWARE		
35	4" X 4" BUTT HINGE	PENROD MH40AUPC (STEEL)
36	4" X 4" BALL BEARING HINGE	PENROD MH40BBTP (BRASS)
37	4" X 4" BALL BEARING HINGE	BALDWIN 1041 (BRASS)
38	4" X 4" BALL BEARING HINGE	PENROD MH40BBPC (STEEL)
39	5-POINT ACTIVE PANEL LOCK SYS.	HOPPE HLS9000 ROUND BOLT/SHOOTBOLT
40	2-POINT INACTIVE PANEL LOCK SYS.	HOPPE HLS9000 SHOOTBOLT
41	3-POINT ACTIVE PANEL LOCK SYS.	HOPPE HLS9000 ROUND BOLT
42	5-POINT ACTIVE PANEL LOCK SYS.	GU RHINO
43	5-POINT ACTIVE PANEL LOCK SYS.	FUHR
44	2-POINT INACTIVE PANEL LOCK SYS.	GU EUROPA
45	2-POINT INACTIVE PANEL LOCK SYS.	FUHR
46	HANDLE	AS REQ'D TO FIT LOCK SYSTEM
47	LOCK STRIKE PLATE	AS SUPPLIED WITH LOCK SYSTEM
48	3-POINT ACTIVE PANEL LOCK SYS.	GU RHINO
49	3-POINT ACTIVE PANEL LOCK SYS.	FUHR
SEALS AND SEALANTS		
50	WEATHER SEAL	ILPEA IND. HF65B (PREV. HOLM INDUSTRIES JF65814) OR LAUREN DOOR SEALS PART NO. 103257
51	-	-
52	DOOR SWEEP	IMPERIAL FBS30B/FBS36B
53	WEATHER SEAL	LOX-SEAL V-9928 (PREV. HOLM INDUSTRIES NO. JF87)

ITEM #	ITEM DESCRIPTION	MANUFACTURER/NOTES
MISC. FASTENERS		
55	NO. 9 X 3/4" SMS	2 PER HINGE LEAF INTO JAMB & STILE
56	NO. 10 X 2" SMS	2 PER HINGE LEAF INTO STILE & WOOD MULLION
58	NO. 10 X 1 1/2" SMS	2 PER HINGE LEAF INTO STEEL MULLION
59	NO. 10 X 2" SMS	4 PER DOOR REINFORCEMENT PLATE
60	NO. 10 X 2" SMS	6" FROM CORNERS & 16" MAX O.C.
61	NO. 10 X 2" SMS	6" FROM CORNERS & MID SPAN ON SILL
62	1 3/16" BRAD NAIL	1" FROM CORNERS & 8" O.C.
63	1/2" X 3/4" STAPLE	3/4" FROM CORNERS & 6" O.C. STAGGERED
64	NO. 10 X 2 1/2" SMS	3" FROM ENDS & 22" O.C. THRU ASTRAGAL
65	NO. 6 X 3/4" SCREW	2 PER STRIKE PLATE
66	7/8" NAILS	1" FROM ENDS AND 3" O.C.

NOTE: WOOD USED IN TESTING WAS EASTERN WHITE PINE WITH A SPECIFIC GRAVITY OF G = 0.36 AND A MODULUS OF ELASTICITY OF E = 1,200,000 PSI. OTHER WOOD SPECIES APPLICABLE FOR USE WITH THIS PRODUCT ARE THOSE WITH A SPECIFIC GRAVITY OF 0.36 AND MODULUS OF ELASTICITY OF 1,200,000 PSI OR GREATER. ALL WOOD IS MINIMUM GRADE 2 MILLED BY SIGNATURE DOOR INC. TO SELECT.



DRAWN BY: W.R.M.	CHECKED BY: W.W.S.
PLOT: 1=2	DATE: 10/31/11
DATE	
BY	
NO.	REVISION DESCRIPTION
8 FOOT WOOD INSWING IMPACT DOORS MANUFACTURER SIGNATURE DOOR INC. 401 PRIORITY STREET ALTOONA, PA 16602 814-949-2770	
CONSULTANTS W. W. SCHAEFER ENGINEERING & CONSULTING, P.A. (CA 6809) 7480 150TH COURT NORTH PALM BEACH GARDENS, FL 33418 PHONE: 561-744-3424	
DRAWING TITLE 8 FOOT WOOD INSWING IMPACT DOORS	
CERTIFICATION No. 44135 AUG 07 2020 W. W. SCHAEFER, P.E. No. 14135	
DRAWING NO. 1779	REV. C
SHEET NO. 11 OF 11	