

Richard A. Baumann
F.P.E. #36469
T.P.E. #85227
698 Timber Creek Road
Dixon Illinois 61021

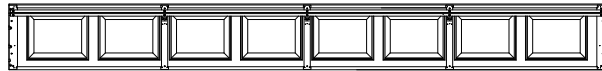
REV.	DESCRIPTION	ECO	DATE
A	RELEASED FOR PRODUCTION	6338.03	10/18/12

TOLERANCES:
DIMENSIONS ARE IN INCHES
TWO PLACE (.XX) ± .03
THREE PLACE (.XXX) ± .015
ANGLES ± 1°
UNLESS OTHERWISE SPECIFIED

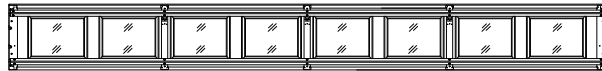
MATERIAL:
FINISH:
SCALE: None
DRAWN BY: G. Wedekind
CHECKED BY: G. Wedekind
DATE: 10/18/12
ECO: 6338.03



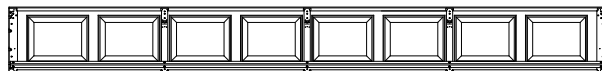
TITLE: SPEC. WINDLOAD BUILDMARK S / TRADEMARK 16" 0" WIDE
NO. P-2419
SHEET 1 OF 3
REV A



3 CENTER STILES, 1 U-BAR
16' WIDE TOP WINDOW SECTION

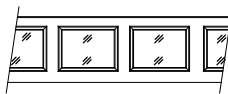


3 CENTER STILES, 2 U-BAR
16' WIDE TOP OR INTERMEDIATE WINDOW SECTION



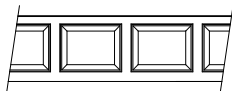
3 CENTER STILES, 1 U-BAR
16' WIDE INTERMEDIATE AND BOTTOM SECTIONS

CENTER STILE AND U-BAR LAYOUT
INTERIOR VIEW



GLASS
PANEL

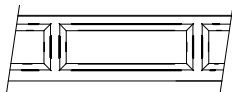
GLASS OPTIONS:
1/8" DSB
1/8" ACRYLIC
1/8" TEMPERED
1/2" INSULATED GLASS



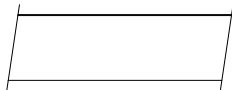
COLONIAL
PANEL



CARRIAGE HOUSE
PANEL

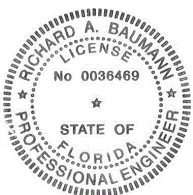


RANCH
PANEL

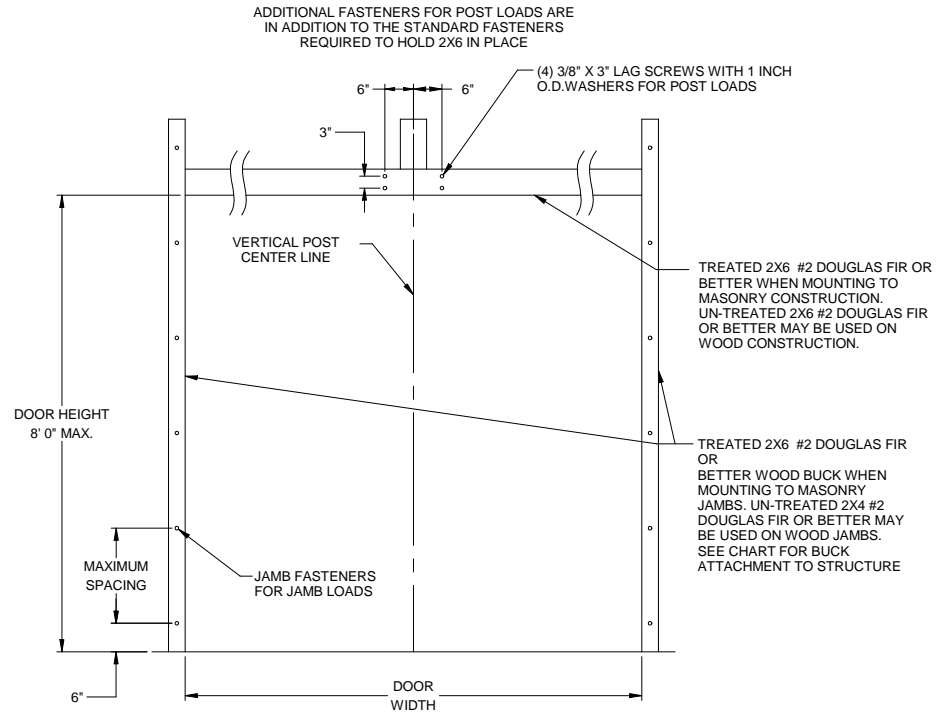


FLUSH
PANEL

PANEL OPTIONS
EXTERIOR VIEW



Richard A. Baumann
P.E. #36469
T.P.E. #85227
698 Timber Creek Road
Dixon Illinois 61021



JAMB ATTACHMENT NOTES

1. 1/4" DIAMETER ANCHORS REQUIRE 1" MIN. O.D. STEEL WASHER AND 2-1/2" MIN. EDGE DISTANCE.
2. 5/16" AND 3/8" DIAMETER FASTENERS REQUIRE 7/8" MIN O.D. STEEL WASHER AND 3" MIN. EDGE DISTANCE.
3. MAXIMUM POSITIVE LOAD PER JAMB = 1118 LBS PER FOOT
4. MAXIMUM NEGATIVE LOAD PER JAMB = 131 LBS PER FOOT.
5. MAXIMUM POSITIVE LOAD ON THE POST = 237 LBS PER FOOT.
6. MAXIMUM NEGATIVE LOAD ON THE POST = 261 LBS PER FOOT.
7. DESIGN OF THE SUPPORTING STRUCTURE SHALL BE THE SOLE RESPONSIBILITY OF THE BUILDING DESIGNER AND SHALL BE DESIGNED FOR THE JAMB LOADS LISTED IN NOTES 3, 4, 5 AND 6.
8. ALTERNATE JAMB ATTACHMENTS MAY BE USED IF APPROVED BY A REGISTERED PROFESSIONAL ENGINEER.
9. DASMA TECHNICAL DATA SHEET TDS-161 MAY BE USED FOR ALTERNATE JAMB ATTACHMENTS.

JAMB MATERIAL	FASTENER TYPE	MINIMUM EMBEDMENT	MINIMUM EDGE DISTANCE	ALLOWABLE TENSION LOAD	MAXIMUM ON CENTER SPACING
3192 PSI CONCRETE	1/4" DIA X 3 1/4" LONG ITW TAPCON	1 3/4"	1"	510	24"
2000 PSI CONCRETE	3/8" DIA X 3 1/2" POWER STUD ANCHOR	1 5/8"	1 7/8"	360	24"
4000 PSI CONCRETE	3/8" DIA X 3 1/2" POWER STUD ANCHOR	1 5/8"	1 7/8"	570	24"
WOOD DOUGLAS FIR (G=46)	5/16" DIA. X 3 1/2"	1 1/2"	1"	352	24"
WOOD SYP (G=55)	5/16" DIA. X 3 1/2"	1 1/2"	1"	460	24"

TOLERANCES:
DIMENSIONS ARE IN INCHES
TWO PLACE (.XX) ± .03
THREE PLACE (.XXX) ± .015
ANGLES ± 1"
UNLESS OTHERWISE SPECIFIED

MATERIAL:

FINISH:

SCALE: None

DRAWN BY: G. Wedekind

CHECKED BY: G. Wedekind

DATE: 10/18/12

ECO: 6338.03

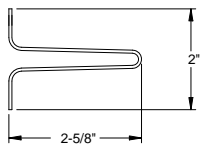


1101 EAST RIVER ROAD
DIXON, IL 61021

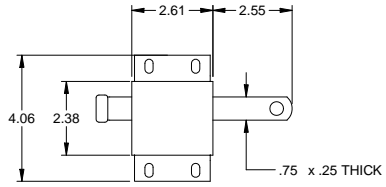
TITLE: SPEC. WINDLOAD
BUILDMARK S / TRADEMARK
16' 0" WIDE

NO. P-2419

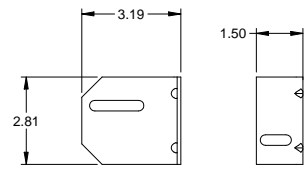
SHEET 2 OF 3
REV A



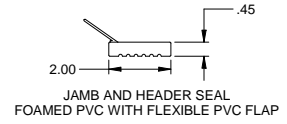
STEEL U-BAR DETAIL
18 GA. (.049" MIN) GALVANIZED
HIGH TENSILE STEEL
80 KSI MINIMUM YIELD



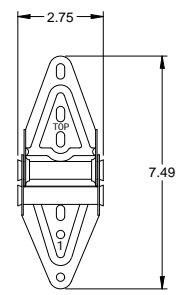
SLIDE LOCK
CASE .086 GALV. STEEL



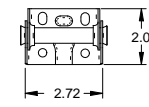
3" TRACK BRACKET
.086 GALV. STEEL



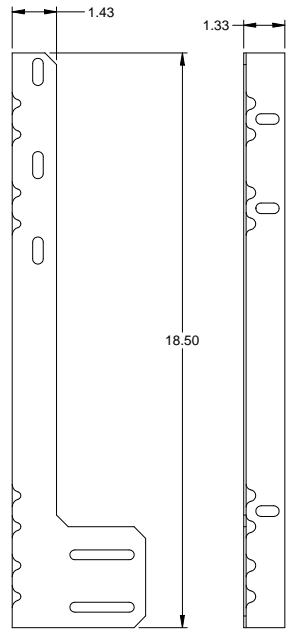
JAMB AND HEADER SEAL
FOAMED PVC WITH FLEXIBLE PVC FLAP



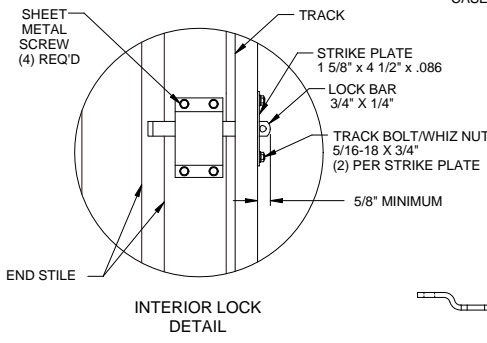
EDGE HINGE
.086 GALV. STEEL



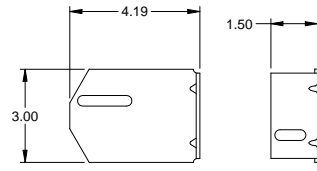
CENTER HINGE
.045 GALV. STEEL



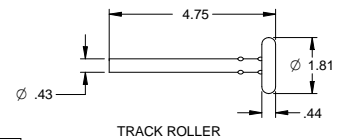
JAMB ANGLE
.078 GALV. STEEL



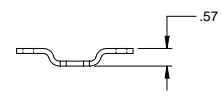
INTERIOR LOCK
DETAIL



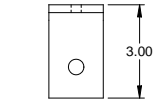
4" TRACK BRACKET
.086 GALV. STEEL



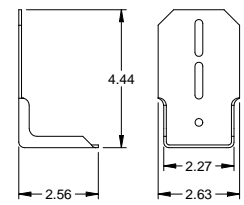
TRACK ROLLER



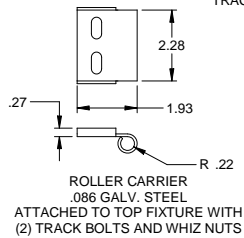
HEADER BRACKET
.160 GALV. STEEL



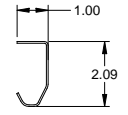
FLOOR BRACKET
.250 GALV. STEEL



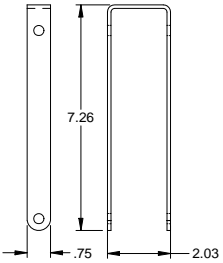
TOP FIXTURE
.086 GALV. STEEL



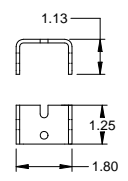
ROLLER CARRIER
.086 GALV. STEEL
ATTACHED TO TOP FIXTURE WITH
(2) TRACK BOLTS AND WHIZ NUTS



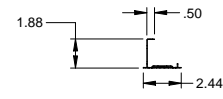
TRACK
.055 GALV. STEEL



POST STRAP
.116 GALV. STEEL

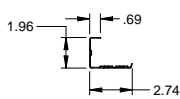


STRAP BRACKET
.116 GALV. STEEL



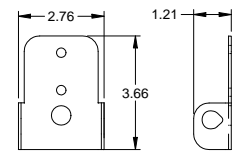
SECTION HEIGHT

CENTER STILE
.034 GALV. STEEL

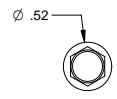


SECTION HEIGHT

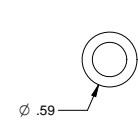
END STILE
.043 GALV. STEEL



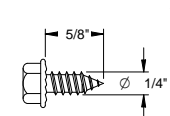
ROLLER CARRIER
.086 GALV. STEEL



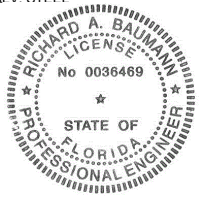
SHEET METAL SCREW



TRACK BOLT



HEX HEAD LAG SCREW



Richard A. Baumann
F.P.E. #36469
T.P.E. #85227
698 Timber Creek Road
Dixon Illinois 61021

TOLERANCES: DIMENSIONS ARE IN INCHES TWO PLACE (.XX) ± .03 THREE PLACE (.XXX) ± .015 ANGLES ± 1° UNLESS OTHERWISE SPECIFIED	MATERIAL: FINISH:	SCALE: NONE	TITLE: SPEC. WINDLOAD BUILDMARK S / TRADEMARK 16" 0" WIDE	NO. P-2419	SHEET 3 OF 3	REV A
		DRAWN BY: G. WEDEKIND				
		CHECKED BY: G. WEDEKIND				
		DATE: 10/18/12 ECO: 6338.03				

