

**STEEL SECTION**  
 BUILDMARK .017 THICK G-40 GALVANIZED STEEL  
 TRADEMARK .023 THICK G-40 GALVANIZED STEEL  
 WITH AN EPOXY PRIMER AND BAKED ON POLYESTER  
 FINISH WHICH IS ROLL-FORMED WITH WOOD GRAIN  
 TEXTURE AND STAMPED WITH EMBOSSED OR FLUSH  
 PANELS.

PERIMETER SEAL  
 NAILED 8" O.C. WITH  
 4d STEEL NAILS

END STILE  
 TOX LOCKED TO SECTION  
 SEE DETAIL ON  
 SHT 3

CENTER STILE  
 TOX LOCKED AND  
 GLUED TO PANEL  
 SEE DETAIL  
 ON SHT 3

CENTER HINGE  
 SEE DETAIL ON SHT 3

U-BAR  
 SEE DETAIL ON SHT 3

SINGLE EDGE HINGE  
 SEE DETAIL ON SHT 3

JAMBS  
 2X6 #2 DOUGLAS FIR OR BETTER  
 WOOD JAMB SEE SHT 2 FOR  
 ATTACHMENT  
 HEX HEAD LAG SCREW  
 (2) PER BRACKET, SEE DETAIL  
 ON SHT 3  
 TRACK BRACKET SHOWN,  
 FULL ANGLE OPTIONAL  
 SEE DETAIL ON SHT 3  
 TRACK BOLT / WHIZ LOCK NUT  
 SEE DETAIL ON SHT 3  
 TRACK ROLLER  
 SEE DETAIL ON SHT 3  
 TRACK, 2" SHOWN, 3" OPTIONAL  
 SEE DETAIL ON SHT 3

SECTION B-B

TYPICAL TRACK INSTALLATION  
 NORMAL HEADROOM TRACK SHOWN, LOW  
 HEADROOM, LIFT CLEARANCE AND VERTICAL LIFT  
 TRACK AVAILABLE

SHEET METALSCREW  
 (3) REQ'D PER  
 TOP FIXTURE

SHEET METALSCREW  
 (4) REQ'D PER HINGE

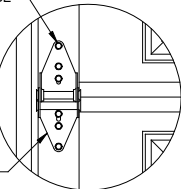
TOP FIXTURE

TOP FIXTURE DETAIL

CENTER HINGE  
 DETAIL

SPRING COUNTERBALANCE  
 SPRING WIRE INDIVIDUALLY  
 CALCULATED TO  
 COUNTERBALANCE DOOR.  
 QUANTITY AND SIZE OF SPRING  
 WILL VARY BASED ON DOOR SIZE.

SHEET METALSCREW  
 (6) REQ'D PER HINGE



EDGE HINGE DETAIL

TOP FIXTURE  
 SEE DETAIL ON SHT 3  
 WINDOWS  
 SEE SHEET 2 FOR OPTIONS

STEEL REINFORCEMENT  
 ONE (1) U-BAR PER  
 INTERMEDIATE SECTIONS,  
 (2) U-BAR ON TOP AND  
 BOTTOM SECTIONS,  
 FASTENED TO ALL CENTER  
 AND END STILES  
 USING (2) SHEET METAL  
 SCREWS AT EACH STILE

DOOR HEIGHT  
 7'-0" HIGH  
 SHOWN  
 OTHER DOOR  
 HEIGHTS  
 AVAILABLE UP  
 TO 16'-0" USING  
 18" OR 21" HIGH  
 SECTIONS

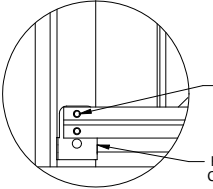
LOCKS REQUIRED  
 ON DOORS NOT  
 ELECTRICALLY  
 OPERATED. SEE DETAILS  
 ON SHT 2.

ROLLER CARRIER  
 SEE DETAIL ON SHT 3

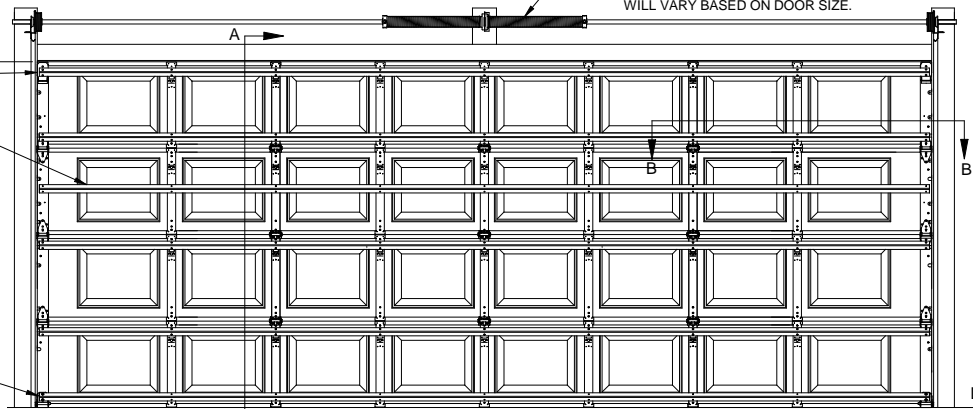
VENTS (OPTIONAL)  
 VENT OPENINGS MAY BE  
 LOCATED IN BOTTOM SECTION  
 AS REQUIRED BY CODE

SHEET METAL SCREW  
 (2) REQ'D PER  
 ROLLER CARRIER

ROLLER  
 CARRIER



ROLLER CARRIER DETAIL

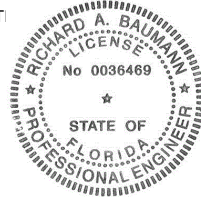


DOOR WIDTH - 18'-0" MAXIMUM  
 18'-0" WIDE SHOWN  
 SEE SHEET 2 FOR OTHER DOOR WIDTHS

INTERIOR ELEVATION

DOORS TESTED PER TAS 202  
 AND ANSI/DASMA 108  
 FOR STATIC AIR PRESSURE

MAXIMUM DOOR WIDTH	DESIGN LOAD
18'-0"	+16.0 -18.0



Richard A. Baumann  
 F.P.E. #36469  
 T.P.E. #85227  
 698 Timber Creek Road  
 Dixon Illinois 61021

REV.	DESCRIPTION	ECO	DATE	ECO
A	RELEASED TO PRODUCTION	6338.03	10/22/12	

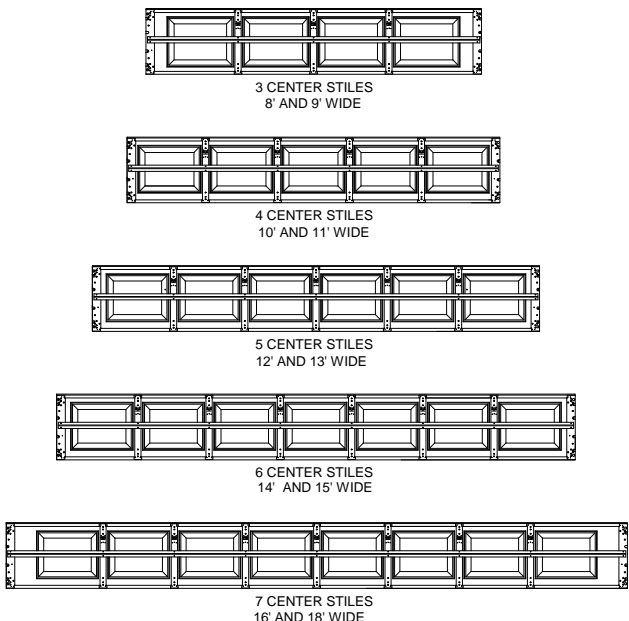
SCALE: NONE
DRAWN BY: G. WEDEKIND
CHECKED BY: G. WEDEKIND
DATE: 10/22/12
ECO: 6338.03



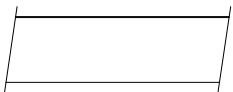
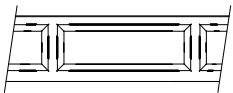
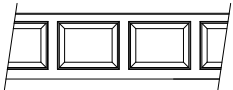
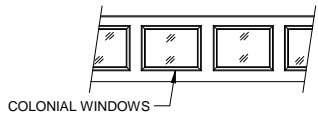
1101 EAST RIVER ROAD  
 DIXON, IL 61021

TITLE:  
 SPEC, WINDLOAD  
 BUILDMARK / TRADEMARK

NO. P-2417	SHEET 1 OF 3	REV A
------------	-----------------	----------

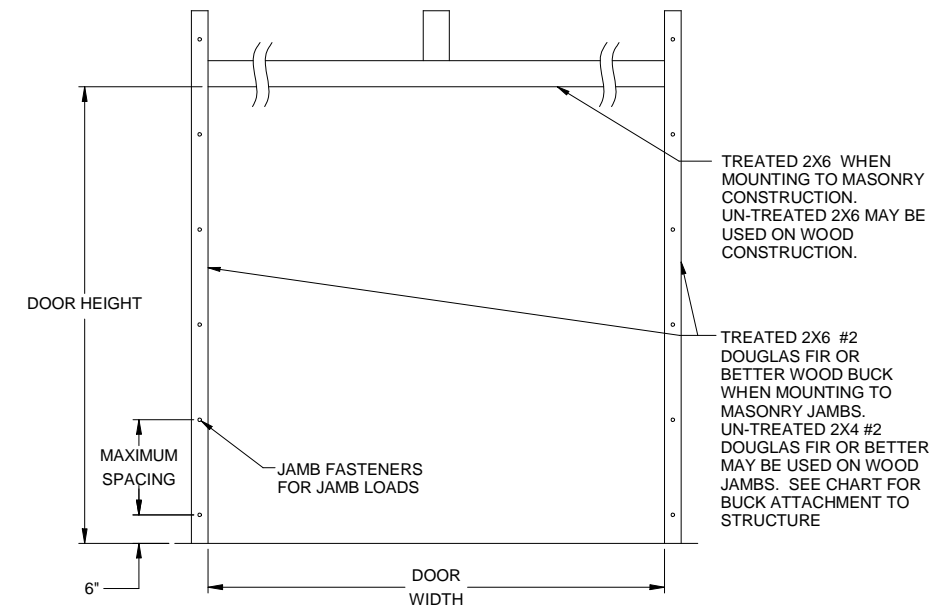


CENTER STILE LAYOUT INTERIOR VIEW  
INTERMEDIATE SECTION SHOWN



PANEL OPTIONS  
EXTERIOR VIEW

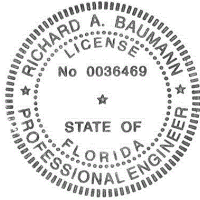
GLASS PANEL  
GLASS OPTIONS:  
1/8" DSB  
1/8" ACRYLIC  
1/8" TEMPERED  
1/2" INSULATED GLASS



JAMB ATTACHMENT NOTES

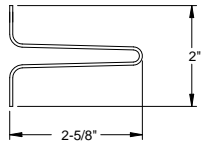
1. 1/4" DIAMETER ANCHORS REQUIRE 5/8" MIN. O.D. STEEL WASHER.
2. 5/16" AND 3/8" DIAMETER FASTENERS REQUIRE 7/8" MIN O.D. STEEL WASHER.
3. MAXIMUM POSITIVE LOAD PER JAMB = (18' X 16.0 PSF) / 2 = 144 LBS PER FOOT
4. MAXIMUM NEGATIVE LOAD PER JAMB = (18' X 18.0 PSF) / 2 = 162 LBS PER FOOT.
5. DESIGN OF THE SUPPORTING STRUCTURE SHALL BE THE SOLE RESPONSIBILITY OF THE BUILDING DESIGNER AND SHALL BE DESIGNED FOR THE JAMB LOADS LISTED IN NOTES 3 AND 4.
6. ALTERNATE JAMB ATTACHMENTS MAY BE USED IF APPROVED BY A REGISTERED PROFESSIONAL ENGINEER.
7. DASMA TECHNICAL DATA SHEET TDS-161 MAY BE USED FOR ALTERNATE JAMB ATTACHMENTS

JAMB MATERIAL	FASTENER TYPE	MINIMUM EMBEDMENT	MINIMUM EDGE DISTANCE	ALLOWABLE TENSION LOAD	MAXIMUM ON CENTER SPACING
3192 PSI CONCRETE	1/4" DIA X 3 1/4" LONG ITW TAPCON	1 3/4"	1"	510	24"
2000 PSI CONCRETE	3/8" DIA X 3 1/2" POWER STUD ANCHOR	1 5/8"	1 7/8"	360	24"
4000 PSI CONCRETE	3/8" DIA X 3 1/2" POWER STUD ANCHOR	1 5/8"	1 7/8"	570	24"
WOOD DOUGLAS FIR (G=46)	5/16" DIA. X 3 1/2"	1 1/2"	1"	352	24"
WOOD SYP (G=55)	5/16" DIA. X 3 1/2"	1 1/2"	1"	460	24"

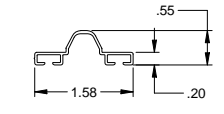


Richard A. Baumann  
F.P.E. #36469  
T.P.E. #85227  
698 Timber Creek Road  
Dixon Illinois 61021

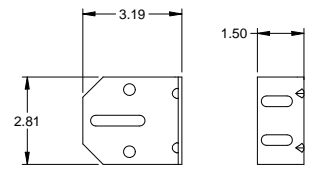
SCALE: NONE	 1101 EAST RIVER ROAD DIXON, IL 61021	TITLE: SPEC, WINDLOAD BUILDMARK / TRADEMARK		
DRAWN BY: G. WEDEKIND		NO. P-2417		
CHECKED BY: G. WEDEKIND		SHEET 2 OF 3	REV A	
DATE: 10/22/12				
ECO: 6338.03	REV.	DESCRIPTION	ECO	DATE



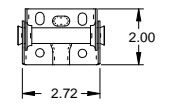
STEEL U-BAR DETAIL  
.049" MIN GALVANIZED  
HIGH TENSILE STEEL  
80 KSI MINIMUM YIELD



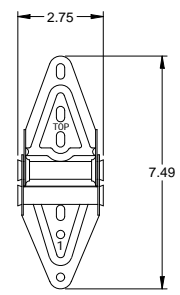
ASTRAGAL RETAINER  
.039 ALUMINUM



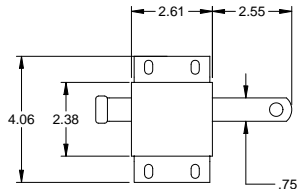
3" TRACK BRACKET  
.116 GALV STEEL



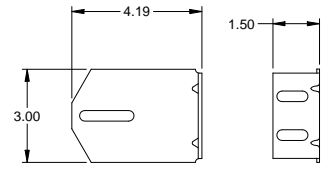
CENTER HINGE  
.045 GALV. STEEL



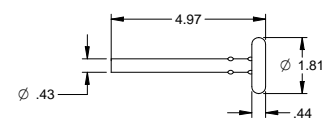
EDGE HINGE  
.086 GALV. STEEL



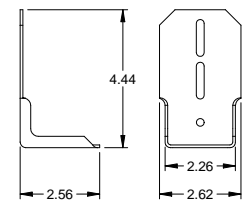
SLIDE LOCK  
CASE .086 GALV. STEEL  
OPTIONAL INTERIOR LOCK  
DETAIL



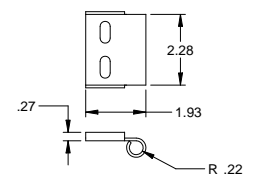
4" TRACK BRACKET  
.116 GALV. STEEL



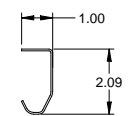
TRACK ROLLER



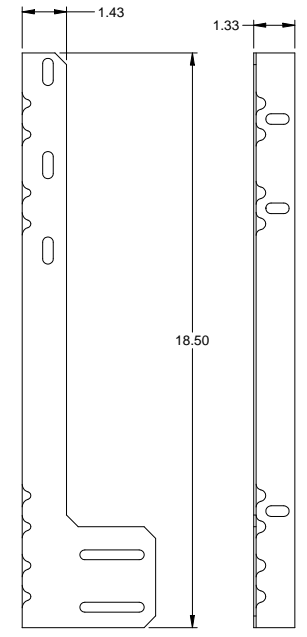
TOP FIXTURE  
.086 GALV. STEEL



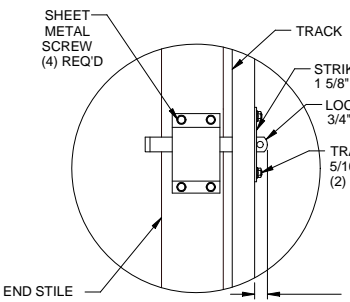
ROLLER CARRIER  
.086 GALV. STEEL  
ATTACHED TO TOP FIXTURE WITH  
(2) TRACK BOLTS AND WHIZ NUTS



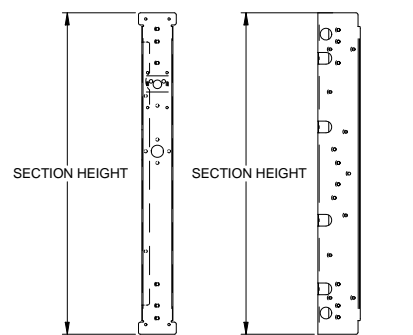
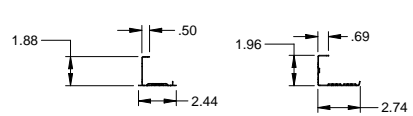
TRACK  
.086 GALV. STEEL



JAMB ANGLE  
.078 GALV. STEEL

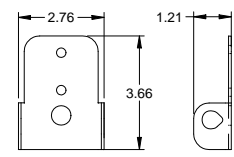


OPTIONAL INTERIOR LOCK  
DETAIL

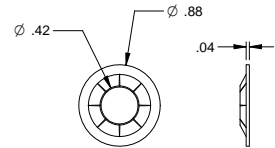


CENTER STILE  
.034 GALV. STEEL

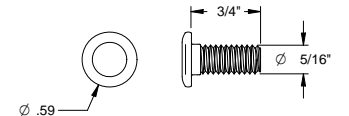
END STILE  
.043 GALV. STEEL



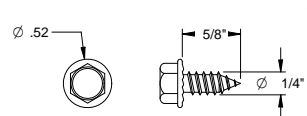
ROLLER CARRIER  
.086 GALV. STEEL



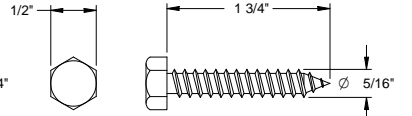
RETAINING NUT



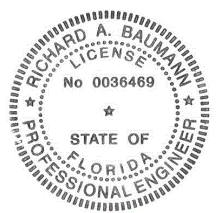
TRACK BOLT



SHEET METAL SCREW



HEX HEAD LAG SCREW



Richard A. Baumann  
P.E. #36469  
T.P.E. #85227  
698 Timber Creek Road  
Dixon Illinois 61021

REV.	DESCRIPTION	ECO	DATE

SCALE: NONE
DRAWN BY: G. WEDEKIND
CHECKED BY: G. WEDEKIND
DATE: 10/22/12
ECO: 6338.03



TITLE: SPEC, WINDLOAD BUILDMARK / TRADEMARK	
NO. P-2417	SHEET 3 OF 3
	REV A