

Richard A. Baumann  
F.P.E. #36469  
T.P.E. #65227  
698 Timber Creek Road  
Dixon Illinois 61021

REV.	DESCRIPTION	ECO	DATE
A	RELEASED FOR PRODUCTION	6338.03	10/18/12

**TOLERANCES:**  
DIMENSIONS ARE IN INCHES  
TWO PLACE (.XX) ± .03  
THREE PLACE (.XXX) ± .015  
ANGLES ± 1°  
UNLESS OTHERWISE SPECIFIED

**MATERIAL:**

**FINISH:**

**SCALE:** None

**DRAWN BY:** G. Wedekind

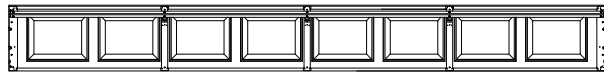
**CHECKED BY:** G. Wedekind

**DATE:** 10/18/12

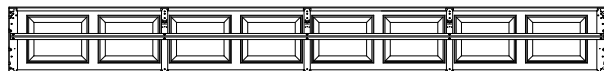
**ECO:** 6338.03



<b>TITLE:</b> SPEC. WINDLOAD BUILDMARK S / TRADEMARK 16" 0" WIDE		
<b>NO.</b> P-2416	<b>SHEET</b> 1 OF 3	<b>REV</b> A

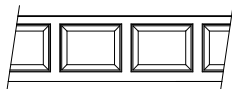
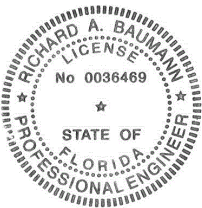


3 CENTER STILES  
16' WIDE LOCK SECTION



3 CENTER STILES  
16' WIDE INTERMEDIATE SECTION

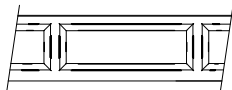
CENTER STILE AND U-BAR LAYOUT  
INTERIOR VIEW



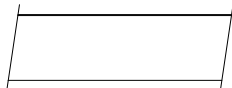
COLONIAL  
PANEL



CARRIAGE HOUSE  
PANEL



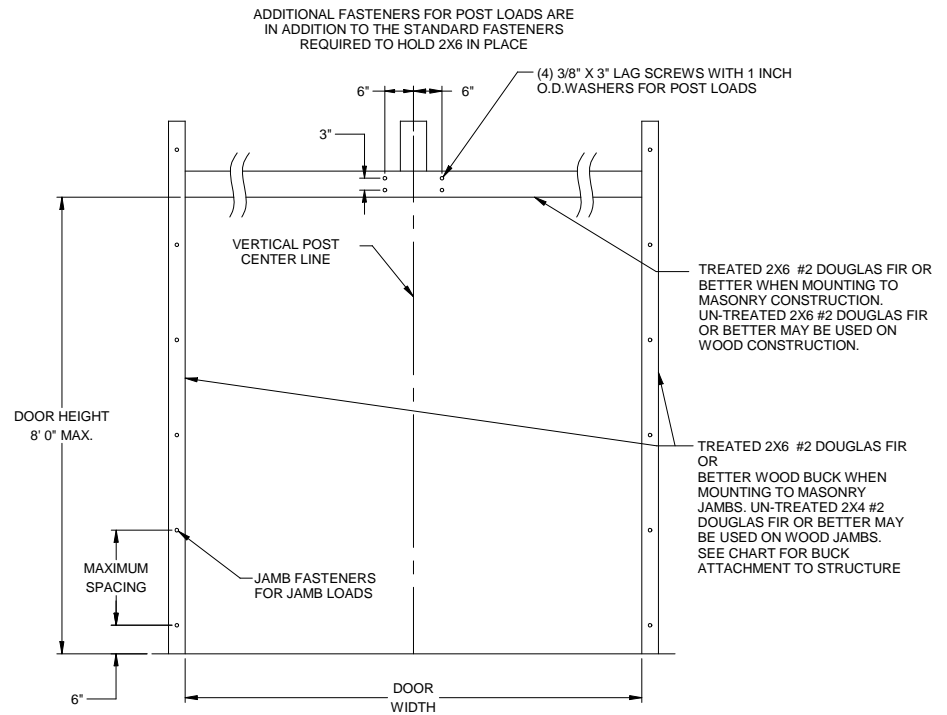
RANCH  
PANEL



FLUSH  
PANEL

PANEL OPTIONS  
EXTERIOR VIEW

Richard A. Baumann  
P.E. #36469  
T.P.E. #85227  
698 Timber Creek Road  
Dixon Illinois 61021



JAMB ATTACHMENT NOTES

1. 1/4" DIAMETER ANCHORS REQUIRE 1" MIN. O.D. STEEL WASHER AND 2-1/2" MIN. EDGE DISTANCE.
2. 5/16" AND 3/8" DIAMETER FASTENERS REQUIRE 7/8" MIN O.D. STEEL WASHER AND 3" MIN. EDGE DISTANCE.
3. MAXIMUM POSITIVE LOAD PER JAMB = 118 LBS PER FOOT
4. MAXIMUM NEGATIVE LOAD PER JAMB = 131 LBS PER FOOT.
5. MAXIMUM POSITIVE LOAD ON THE POST = 237 LBS PER FOOT.
6. MAXIMUM NEGATIVE LOAD ON THE POST = 261 LBS PER FOOT.
7. DESIGN OF THE SUPPORTING STRUCTURE SHALL BE THE SOLE RESPONSIBILITY OF THE BUILDING DESIGNER AND SHALL BE DESIGNED FOR THE JAMB LOADS LISTED IN NOTES 3, 4, 5 AND 6.
8. ALTERNATE JAMB ATTACHMENTS MAY BE USED IF APPROVED BY A REGISTERED PROFESSIONAL ENGINEER.
9. DASMA TECHNICAL DATA SHEET TDS-161 MAY BE USED FOR ALTERNATE JAMB ATTACHMENTS.

JAMB MATERIAL	FASTENER TYPE	MINIMUM EMBEDMENT	MINIMUM EDGE DISTANCE	ALLOWABLE TENSION LOAD	MAXIMUM ON CENTER SPACING
3192 PSI CONCRETE	1/4" DIA X 3 1/4" LONG ITW TAPCON	1 3/4"	1"	510	24"
2000 PSI CONCRETE	3/8" DIA X 3 1/2" POWER STUD ANCHOR	1 5/8"	1 7/8"	360	24"
4000 PSI CONCRETE	3/8" DIA X 3 1/2" POWER STUD ANCHOR	1 5/8"	1 7/8"	570	24"
WOOD DOUGLAS FIR (G=46)	5/16" DIA. X 3 1/2"	1 1/2"	1"	352	24"
WOOD SYP (G=55)	5/16" DIA. X 3 1/2"	1 1/2"	1"	460	24"

TOLERANCES:  
DIMENSIONS ARE IN INCHES  
TWO PLACE (.XX) ± .03  
THREE PLACE (.XXX) ± .015  
ANGLES ± 1"  
UNLESS OTHERWISE SPECIFIED

MATERIAL:

FINISH:

SCALE: None

DRAWN BY: G. Wedekind

CHECKED BY: G. Wedekind

DATE: 10/18/12

ECO: 6338.03



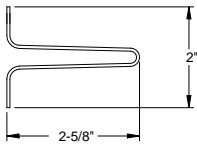
1101 EAST RIVER ROAD  
DIXON, IL 61021

TITLE: SPEC. WINDLOAD  
BUILDMARK S / TRADEMARK  
16' 0" WIDE

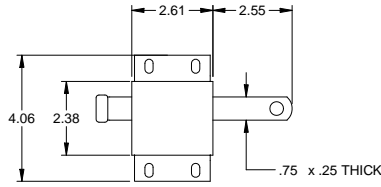
NO. P-2416

SHEET 2 OF 3

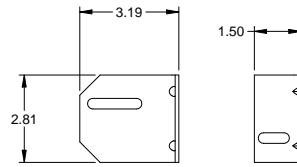
REV A



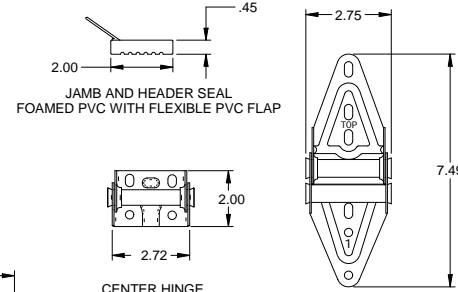
STEEL U-BAR DETAIL  
18 GA. (.049" MIN) GALVANIZED  
HIGH TENSILE STEEL  
80 KSI MINIMUM YIELD



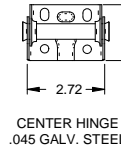
SLIDE LOCK  
CASE .086 GALV. STEEL



3" TRACK BRACKET  
.086 GALV. STEEL

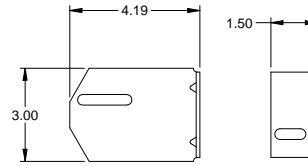


JAMB AND HEADER SEAL  
FOAMED PVC WITH FLEXIBLE PVC FLAP

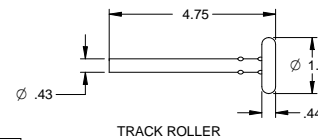


CENTER HINGE  
.045 GALV. STEEL

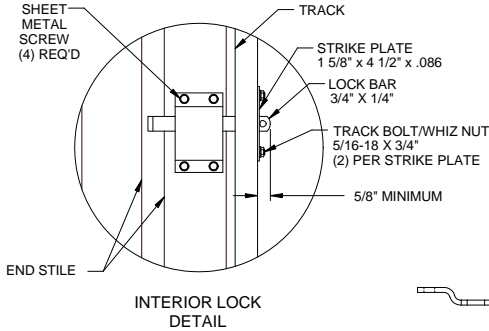
EDGE HINGE  
.086 GALV. STEEL



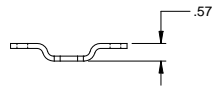
4" TRACK BRACKET  
.086 GALV. STEEL



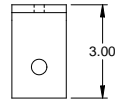
TRACK ROLLER



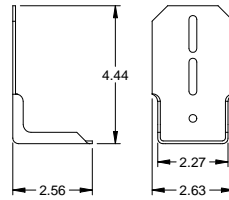
INTERIOR LOCK  
DETAIL



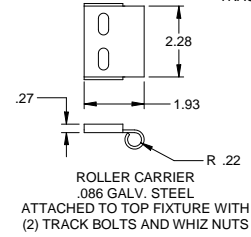
HEADER BRACKET  
.160 GALV. STEEL



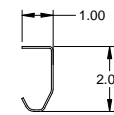
FLOOR BRACKET  
.250 GALV. STEEL



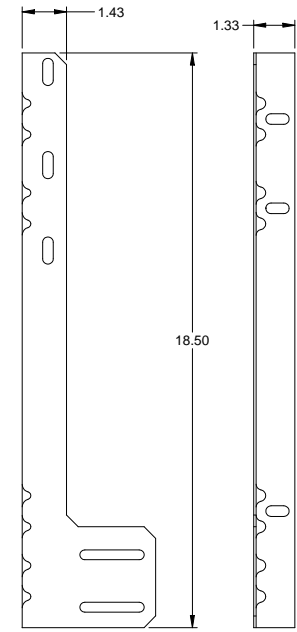
TOP FIXTURE  
.086 GALV. STEEL



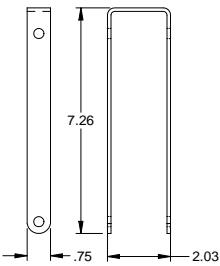
ROLLER CARRIER  
.086 GALV. STEEL  
ATTACHED TO TOP FIXTURE WITH  
(2) TRACK BOLTS AND WHIZ NUTS



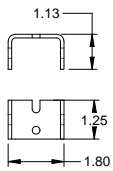
TRACK  
.055 GALV. STEEL



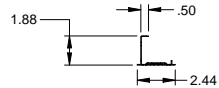
JAMB ANGLE  
.078 GALV. STEEL



POST STRAP  
.116 GALV. STEEL



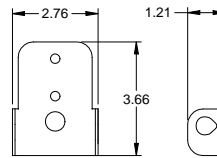
STRAP BRACKET  
.116 GALV. STEEL



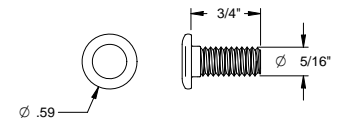
SECTION HEIGHT



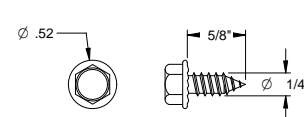
SECTION HEIGHT



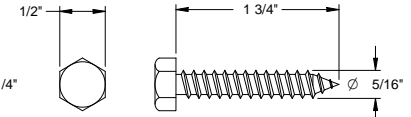
ROLLER CARRIER  
.086 GALV. STEEL



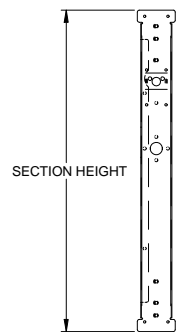
TRACK BOLT



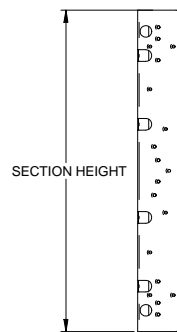
SHEET METAL SCREW



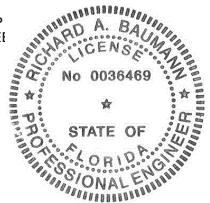
HEX HEAD LAG SCREW



CENTER STILE  
.034 GALV. STEEL



END STILE  
.043 GALV. STEEL



Richard A. Baumann  
F.P.E. #36469  
T.P.E. #85227  
698 Timber Creek Road  
Dixon Illinois 61021

TOLERANCES:  
DIMENSIONS ARE IN INCHES  
TWO PLACE (.XX) ± .03  
THREE PLACE (.XXX) ± .015  
ANGLES ± 1°  
UNLESS OTHERWISE SPECIFIED

MATERIAL:  
  
FINISH:

SCALE: NONE  
DRAWN BY: G. WEDEKIND  
CHECKED BY: G. WEDEKIND  
DATE: 10/18/12  
ECO: 6338.03



TITLE: SPEC. WINDLOAD  
BUILDMARK S / TRADEMARK  
16" 0" WIDE

NO. P-2416  
SHEET 3 OF 3  
REV A