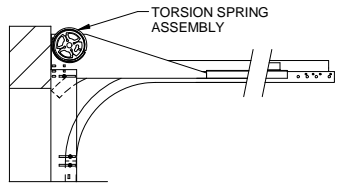
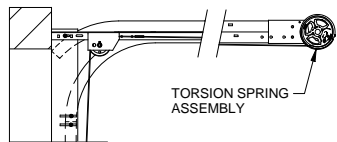


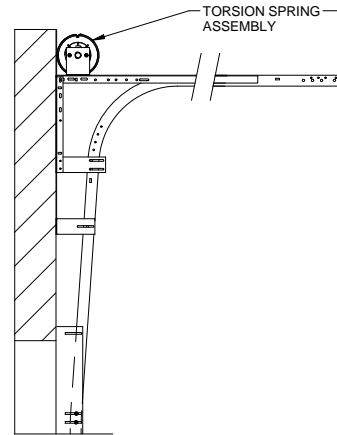
NORMAL HEADROOM TRACK
2" TRACK ANGLE MOUNT SHOWN
2" TRACK BRACKET MOUNT AVAILABLE
3" TRACK ANGLE MOUNT AVAILABLE



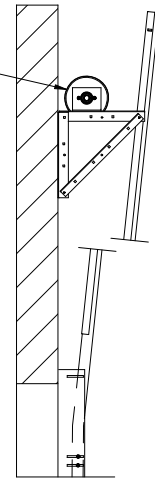
FRONT MOUNT LOW HEADROOM TRACK
2" TRACK ANGLE MOUNT SHOWN
2" TRACK BRACKET MOUNT AVAILABLE
3" TRACK ANGLE MOUNT AVAILABLE



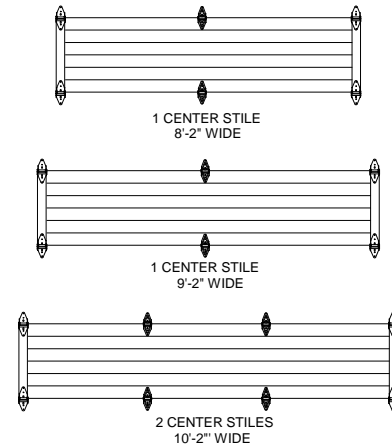
REAR MOUNT LOW HEADROOM TRACK
2" TRACK ANGLE MOUNT SHOWN
2" TRACK BRACKET MOUNT AVAILABLE
3" TRACK ANGLE MOUNT AVAILABLE



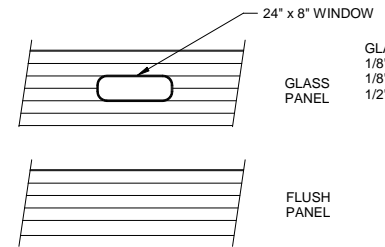
LIFT CLEARANCE TRACK
2" TRACK ANGLE MOUNT SHOWN
2" TRACK BRACKET MOUNT AVAILABLE
3" TRACK ANGLE MOUNT AVAILABLE



VERTICAL LIFT TRACK
2" TRACK ANGLE MOUNT SHOWN
2" TRACK BRACKET MOUNT AVAILABLE
3" TRACK ANGLE MOUNT AVAILABLE



HINGE ROW LAYOUT
INTERIOR VIEW

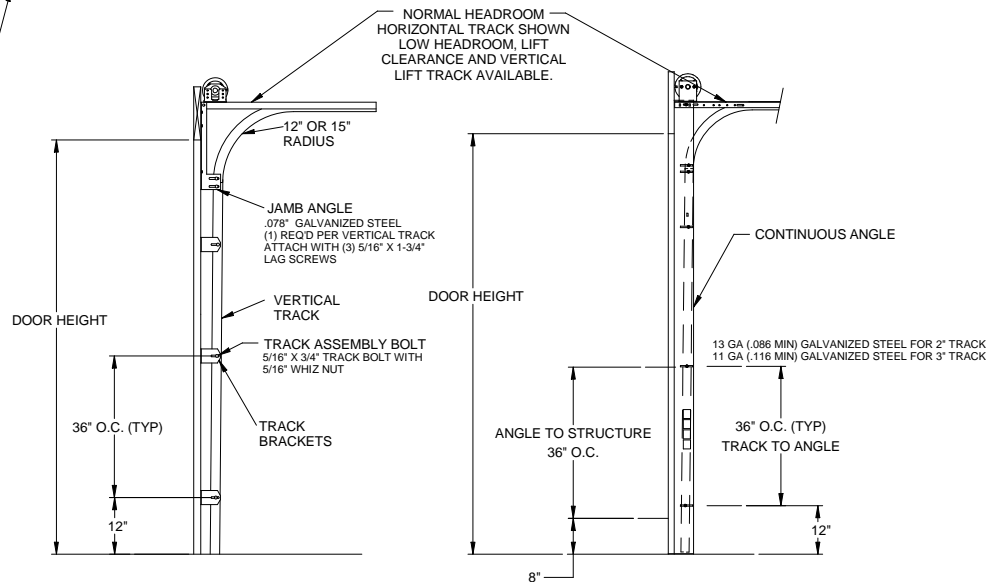
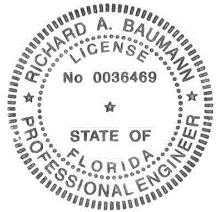


PANEL OPTIONS
EXTERIOR VIEW

GLASS OPTIONS:
1/8" DSB
1/8" ACRYLIC
1/2" INSULATED GLASS

GLASS
PANEL

FLUSH
PANEL



TYPICAL TRACK INSTALLATION
BRACKET MOUNT
WOOD JAMBS

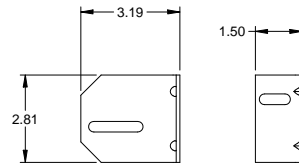
TYPICAL TRACK INSTALLATION
ANGLE MOUNT
WOOD, STEEL OR MASONRY
JAMBS

Richard A. Baumann
F.P.E #36469
T.P.E # 85227
698 Timber Creek Road
Dixon Illinois 61021

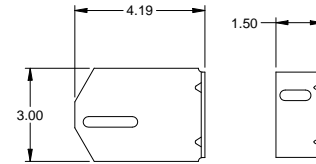
SCALE: NONE
DRAWN BY: G. WEDEKIND
CHECKED BY: G. WEDEKIND
DATE: 08/02/12
ECO: 6338.02



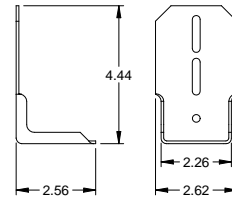
TITLE: SPEC. WINDLOAD THERMASEAL STANDARD	
NO. P-2415	REV A
SHEET 2 OF 4	



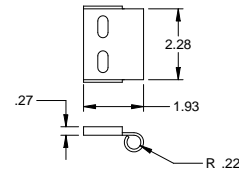
3" TRACK BRACKET
.086 GALV. STEEL



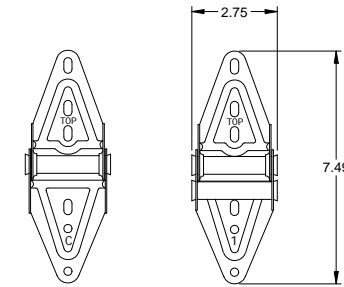
4" TRACK BRACKET
.086 GALV. STEEL



TOP FIXTURE
.086 GALV. STEEL

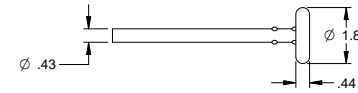


TOP ROLLER CARRIER
.086 GALV. STEEL
ATTACHED TO TOP FIXTURE WITH
(2) TRACK BOLTS AND WHIZ NUTS

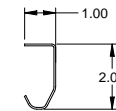


CENTER HINGE
.045 GALV. STEEL

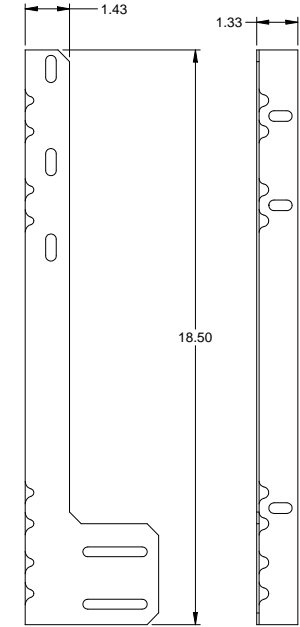
EDGE HINGE
.086 GALV. STEEL



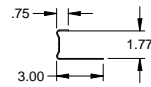
TRACK ROLLER



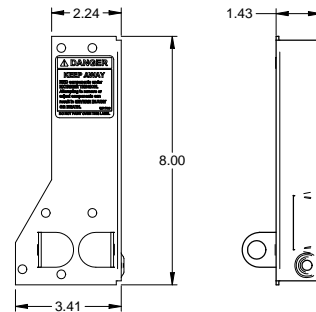
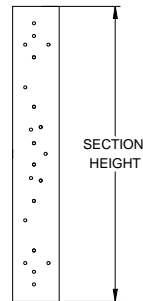
TRACK
.055 GALV. STEEL



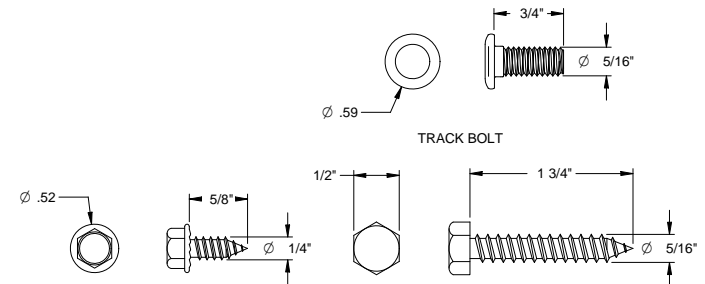
JAMB ANGLE
.078 GALV. STEEL



END STILE
.055 GALV. STEEL

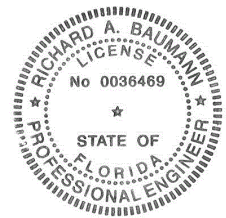


CORNER BRACKET
.086 GALV. STEEL



SHEET METAL SCREW

HEX HEAD LAG SCREW



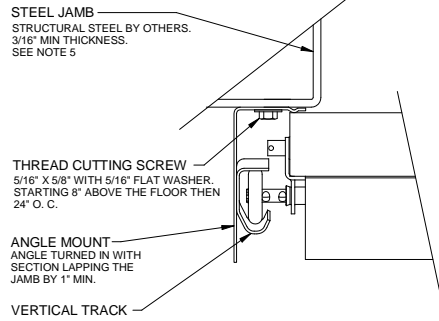
Richard A. Baumann
F.P.E #36469
T.P.E # 85227
698 Timber Creek Road
Dixon Illinois 61021

SCALE: NONE
DRAWN BY: G. WEDEKIND
CHECKED BY: G. WEDEKIND
DATE: 08/02/12
ECO: 6338.02

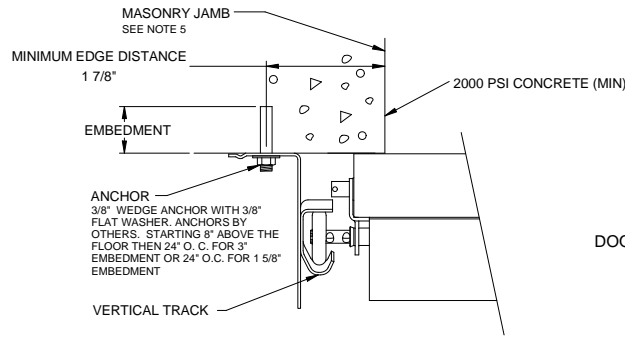


TITLE:
SPEC. WINDLOAD
THERMASEAL STANDARD

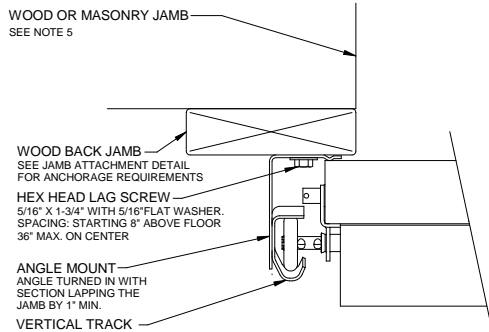
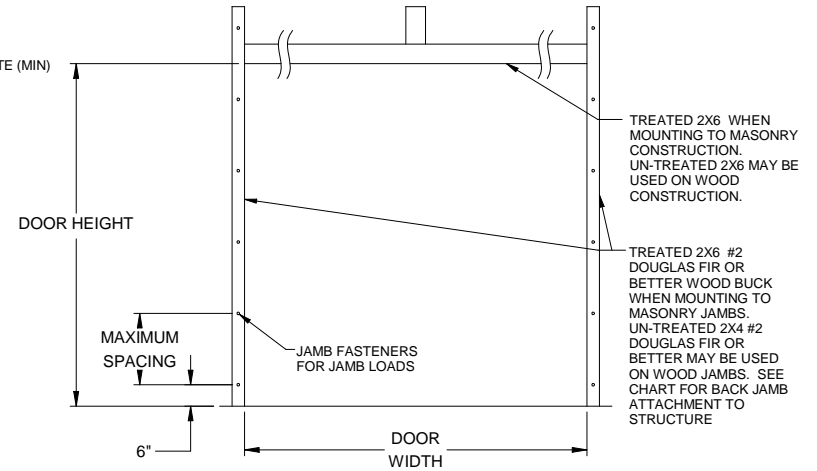
NO. P-2415	SHEET 3 OF 4	REV A
------------	-----------------	----------



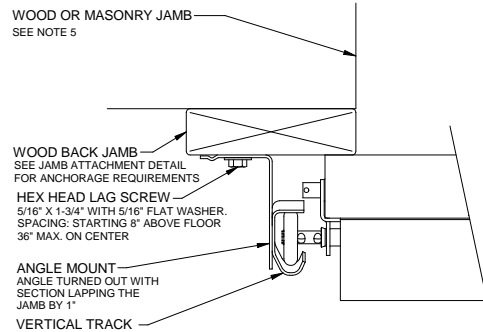
TRACK ASSEMBLY ATTACHMENT TO STEEL JAMB
2\"/>



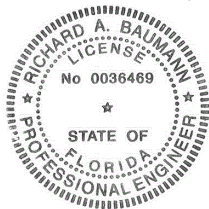
TRACK ASSEMBLY ATTACHMENT TO MASONRY JAMB
2\"/>



TRACK ASSEMBLY ATTACHMENT TO WOOD BACK JAMB
2\"/>



TRACK ASSEMBLY ATTACHMENT TO WOOD BACK JAMB
2\"/>



JAMB ATTACHMENT NOTES

1. 1/4" DIAMETER ANCHORS REQUIRE 5/8" MIN. O.D. STEEL WASHER.
2. 5/16" AND 3/8" DIAMETER FASTENERS REQUIRE 7/8" MIN O.D. STEEL WASHER.
3. MAXIMUM POSITIVE LOAD PER JAMB = (10'-2" X 13.3 PSF) / 2 = 68 LBS PER FOOT
4. MAXIMUM NEGATIVE LOAD PER JAMB = (10'-2" X 13.3 PSF) / 2 = 68 LBS PER FOOT.
5. DESIGN OF THE SUPPORTING STRUCTURE SHALL BE THE SOLE RESPONSIBILITY OF THE BUILDING DESIGNER AND SHALL BE DESIGNED FOR THE JAMB LOADS LISTED IN NOTES 3 AND 4.
6. ALTERNATE JAMB ATTACHMENTS MAY BE USED IF APPROVED BY A REGISTERED PROFESSIONAL ENGINEER.

JAMB ATTACHMENT

1/4" ITW BUILDEX TAPCON				
JAMB TYPE	EMBEDMENT	EDGE DISTANCE	ALLOWABLE TENSION LOAD	MAXIMUM ON CENTER SPACING
2000 PSI CONCRETE	1-3/4"	2-1/2"	505	24"
3000 PSI CONCRETE	1-3/4"	2-1/2"	550	24"
5/16" ITW BUILDEX TAPCON				
3000 PSI CONCRETE	1-3/4"	2 3/16"	563	24"
POWER ANCHOR - 3/8" WEDGE ANCHOR				
2000 PSI CONCRETE	1-5/8"	1-7/8"	360	24"
	3"	1-7/8"	768	24"
5/16" LAG SCREW				
SPRUCE, PINE, FIR (G = .42)	1-1/2"	1-3/4"	307	24"
DOUGLAS FIR (G = .46)	1-1/2"	1-3/4"	352	24"
SOUTHERN YELLOW PINE (G = .55)	1-1/2"	1-3/4"	460	24"
3/8" LAG SCREW				
SPRUCE, PINE, FIR (G = .42)	1-1/2"	1-3/4"	352	24"
DOUGLAS FIR (G = .46)	1-1/2"	1-3/4"	403	24"
SOUTHERN YELLOW PINE (G = .55)	1-1/2"	1-3/4"	528	24"
5/16 X 5/8 THREAD CUTTING SCREW				
STEEL A 36	3/16"	1/2"	1048	24"

Richard A. Baumann
F.P.E #36469
T.P.E # 85227
698 Timber Creek Road
Dixon Illinois 61021

SCALE: NONE	 1101 EAST RIVER ROAD DIXON, IL 61021	TITLE: SPEC. WINDLOAD THERMASEAL STANDARD	
DRAWN BY: G. WEDEKIND		NO. P-2415	
CHECKED BY: G. WEDEKIND			SHEET 4 OF 4
DATE: 08/02/12			REV A
ECO: 6338.02			