

Richard A. Baumann
 F.P.E. #36469
 T.P.E. #85227
 698 Timber Creek Road
 Dixon Illinois 61021

SCALE: NONE	DATE: 08/02/12	ECO: 6338.02
DRAWN BY: G. WEDEKIND	CHECKED BY: G. WEDEKIND	
DESCRIPTION: PRODUCTION RELEASE	DATE: 08/02/12	ECO: 6338.02

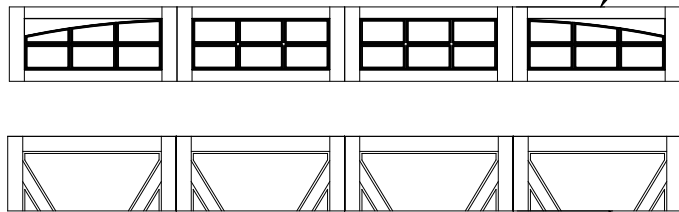
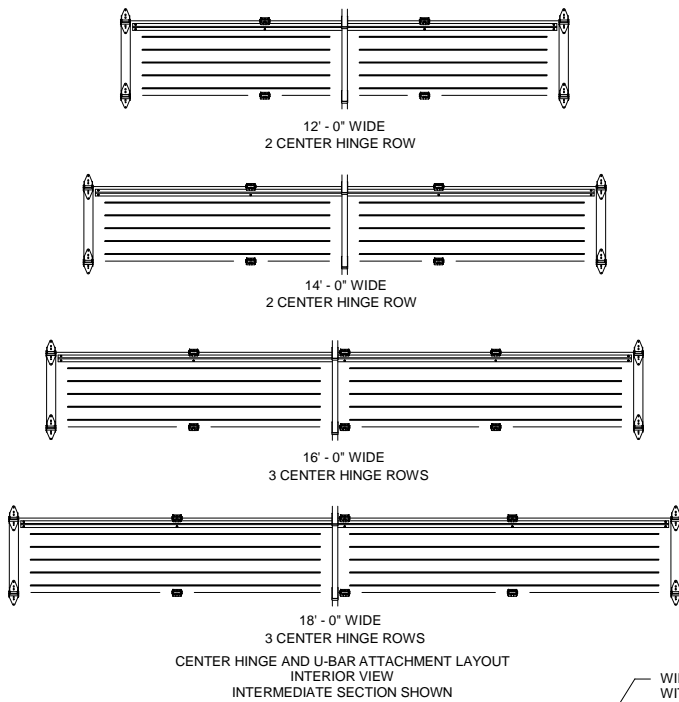


TITLE: SPEC. WINDLOAD ROCKCREEKE 18'-0" MAX. DOOR WIDTH

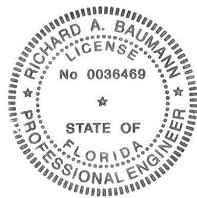
NO. P-2307

SHEET 1 OF 3

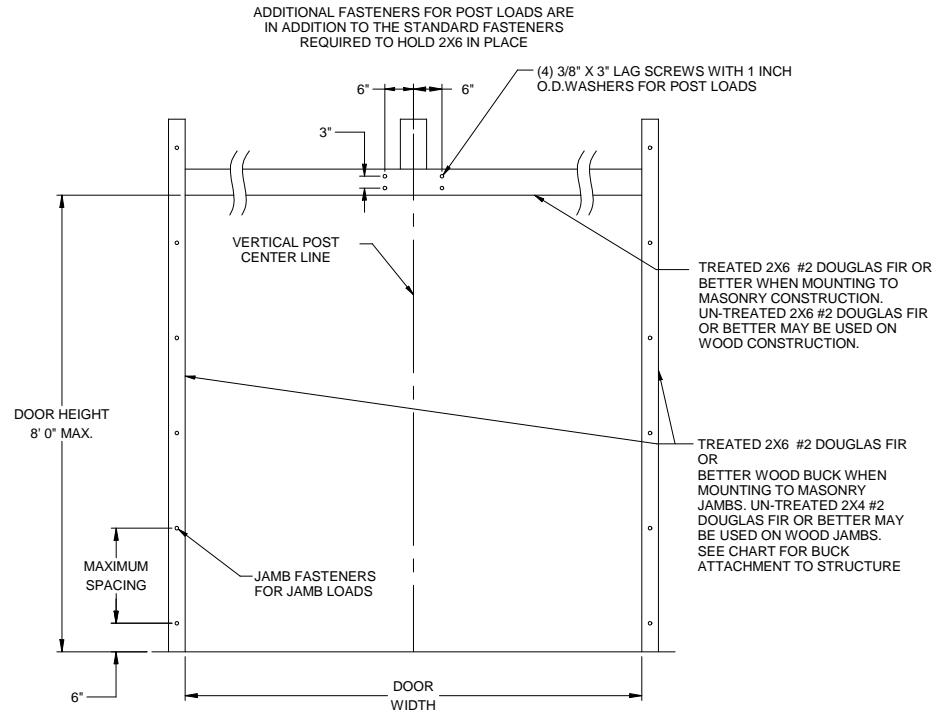
REV A



PANEL OPTIONS
EXTERIOR VIEW
TOP SECTION SHOWN



Richard A. Baumann
F.P.E. #36469
T.P.E. #85227
698 Timber Creek Road
Dixon Illinois 61021



JAMB ATTACHMENT NOTES

1. 1/4" DIAMETER ANCHORS REQUIRE 1" MIN. O.D. STEEL WASHER AND 2-1/2" MIN. EDGE DISTANCE.
2. 5/16" AND 3/8" DIAMETER FASTENERS REQUIRE 7/8" MIN O.D. STEEL WASHER AND 3" MIN. EDGE DISTANCE.
3. MAXIMUM POSITIVE LOAD PER JAMB = (18' X 29.7 PSF) / 4 = 134 LBS PER FOOT
4. MAXIMUM NEGATIVE LOAD PER JAMB = (18' X 33.1 PSF) / 4 = 149 LBS PER FOOT.
5. DESIGN OF THE SUPPORTING STRUCTURE SHALL BE THE SOLE RESPONSIBILITY OF THE BUILDING DESIGNER AND SHALL BE DESIGNED FOR THE JAMB LOADS LISTED IN NOTES 3 AND 4.
6. ALTERNATE JAMB ATTACHMENTS MAY BE USED IF APPROVED BY A REGISTERED PROFESSIONAL ENGINEER.

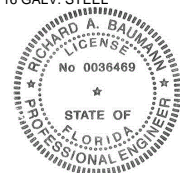
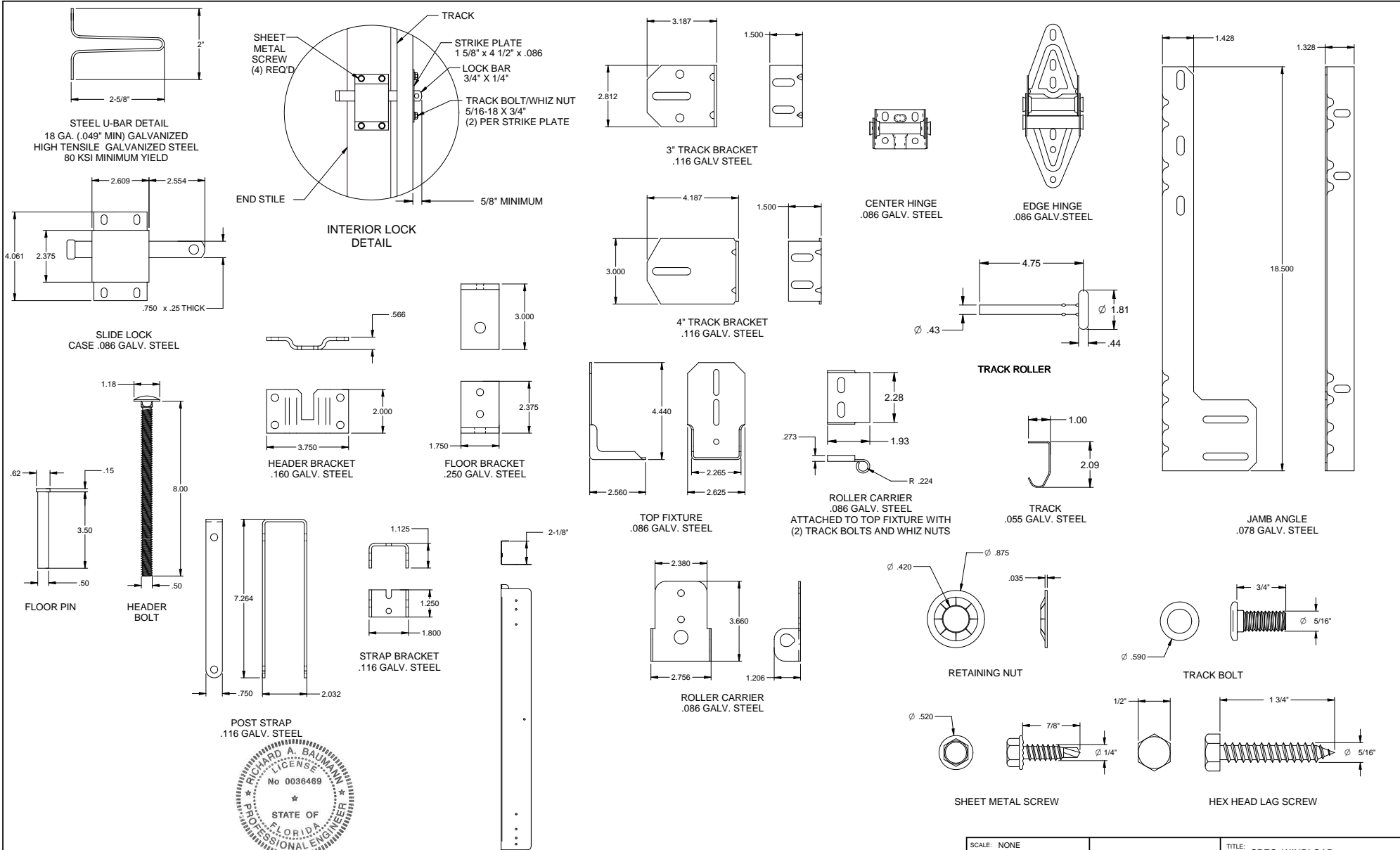
JAMB MATERIAL	FASTENER TYPE	MINIMUM EMBEDMENT	MINIMUM EDGE DISTANCE	ALLOWABLE TENSION LOAD	MAXIMUM ON CENTER SPACING
GROUT FILLED BLOCK	5/16" DIA X 3 1/4" LONG ITW TAPCON	1 3/4"	4"	487	24"
3192 PSI CONCRETE	1/4" DIA X 3 1/4" LONG ITW TAPCON	1 3/4"	1"	510	24"
2899 PSI CONCRETE	5/16" DIA X 3 3/4" LONG ITW TAPCON	2 1/4"	1 9/16"	713	24"
2000 PSI CONCRETE	3/8" DIA X 3 1/2" POWER STUD ANCHOR	1 5/8"	1 7/8"	360	24"
4000 PSI CONCRETE	3/8" DIA X 3 1/2" POWER STUD ANCHOR	1 5/8"	1 7/8"	570	24"
WOOD DOUGLAS FIR (G=.46)	5/16" DIA. X 3 1/2"	1 1/2"	1"	352	24"
WOOD SYP (G=.55)	5/16" DIA. X 3 1/2"	1 1/2"	1"	460	24"

SCALE: NONE
DRAWN BY: G. WEDEKIND
CHECKED BY: G. WEDEKIND
DATE: 08/02/12
ECO: 6338.02



TITLE: SPEC. WINDLOAD
ROCKCREEKE
18'-0" MAX. DOOR WIDTH

NO. P-2307
SHEET 2 OF 3
REV A



Richard A. Baumann
F.P.E. #36469
T.P.E. #85227
698 Timber Creek Road
Dixon Illinois 61021

SCALE: NONE	 1101 EAST RIVER ROAD DIXON, IL 61021	TITLE: SPEC. WINDLOAD ROCKCREEKE 18'-0" MAX. DOOR WIDTH	
DRAWN BY: G. WEDEKIND		NO. P-2307	SHEET 3 OF 3
CHECKED BY: G. WEDEKIND			
DATE: 08/02/12			
ECO: 6338.02			