

Richard A. Baumann  
 F.P.E #36469  
 T.P.E # 85227  
 698 Timber Creek Road  
 Dixon Illinois 61021

F	1) RETESTED AT ACCREDITED LAB, 2) DESIGN PRESSURE WAS +/-30.7 PSF 3) ADDED SHTS 2 AND 3	6338.02	08/19/12	SCALE: NONE
E	1) ADDED GLASS TYPE, 2) WAS 19 GA, 3) WAS ASTM 330	4964	08/30/05	DRAWN BY: G. WEDEKIND
D	1) REMOVED HEADRELATCH, FLOOR PLATE AND INTERIOR LOCKS 2) ADDED MASTERPIECE, 3) ADDED NON IMPACT RESISTANT GLAZING NOTE, 4) ADDED ASTM NOTE, 5) WAS 25"	4162	05/00/02	CHECKED BY: G. WEDEKIND
REV.	DESCRIPTION	ECO	DATE	ECO:

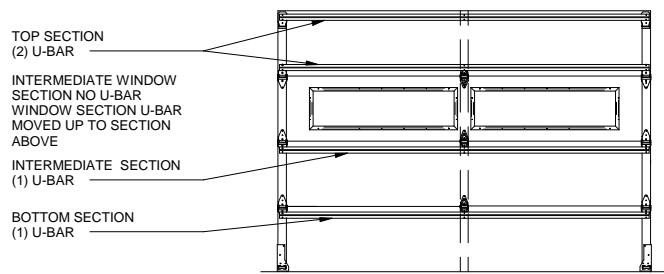


TITLE:  
 SPEC, WINDLOAD  
 SHOWCASE, MASTERPIECE

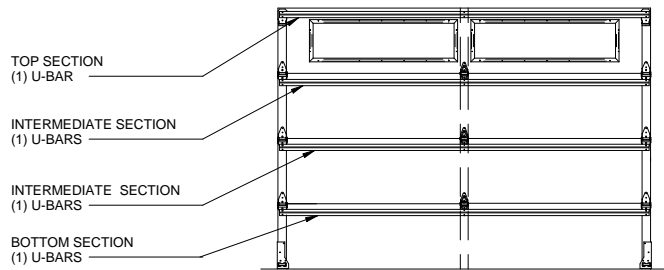
NO. P-1339

SHEET 1 OF 3

REV F

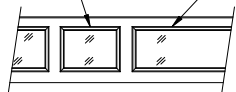


GLASS IN INTERMEDIATE SECTION  
RANCH GLASS SHOWN



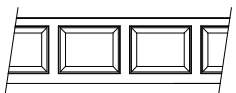
GLASS IN TOP SECTION  
RANCH GLASS SHOWN

COLONIAL WINDOWS RANCH WINDOWS



GLASS PANEL

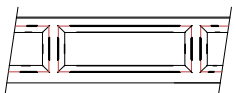
GLASS OPTIONS:  
1/8" DSB  
1/8" ACRYLIC  
1/2" INSULATED GLASS



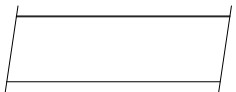
COLONIAL PANEL



CARRIAGE HOUSE PANEL

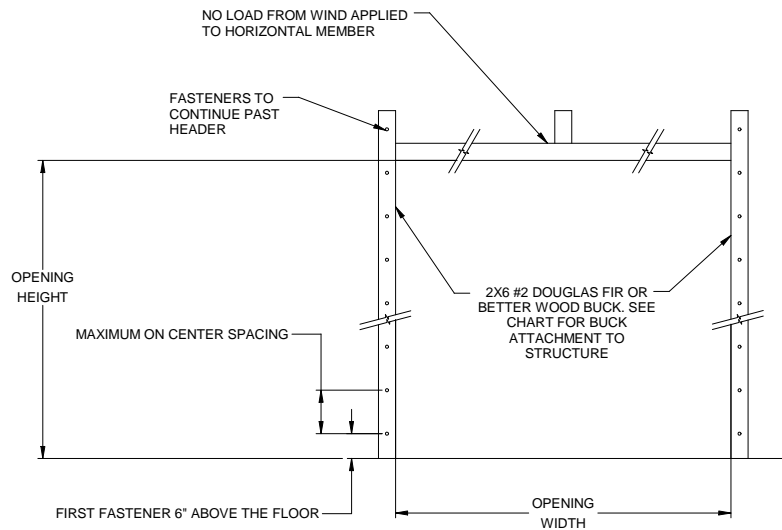


RANCH PANEL



FLUSH PANEL

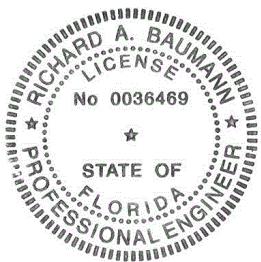
PANEL OPTIONS  
EXTERIOR VIEW



JAMB ATTACHMENT NOTES

1. 1/4" DIAMETER ANCHORS REQUIRE 5/8" MIN. O.D. STEEL WASHER.
2. 5/16" AND 3/8" DIAMETER FASTENERS REQUIRE 7/8" MIN O.D. STEEL WASHER.
3. MAXIMUM POSITIVE LOAD PER JAMB = (10' X 29.0 PSF) / 2 = 145 LBS PER FOOT
4. MAXIMUM NEGATIVE LOAD PER JAMB = (10' X 32.5 PSF) / 2 = 163 LBS PER FOOT.
5. DESIGN OF THE SUPPORTING STRUCTURE SHALL BE THE SOLE RESPONSIBILITY OF THE BUILDING DESIGNER AND SHALL BE DESIGNED FOR THE JAMB LOADS LISTED IN NOTES 3 AND 4.
6. ALTERNATE JAMB ATTACHMENTS MAY BE USED IF APPROVED BY A REGISTERED PROFESSIONAL ENGINEER.

JAMB MATERIAL	FASTENER TYPE	MINIMUM EMBEDMENT	MINIMUM EDGE DISTANCE	ALLOWABLE TENSION LOAD	MAXIMUM ON CENTER SPACING
GROUT FILLED BLOCK	5/16" DIA X 3 1/4" LONG ITW TAPCON	1 3/4"	4"	487	24"
3192 PSI CONCRETE	1/4" DIA X 3 1/4" LONG ITW TAPCON	1 3/4"	1"	510	24"
2899 PSI CONCRETE	5/16" DIA X 3 3/4" LONG ITW TAPCON	2 1/4"	1 9/16"	713	24"
2000 PSI CONCRETE	3/8" DIA X 3 1/2" POWER STUD ANCHOR	1 5/8"	1 7/8"	360	24"
4000 PSI CONCRETE	3/8" DIA X 3 1/2" POWER STUD ANCHOR	1 5/8"	1 7/8"	570	24"
WOOD DOUGLAS FIR (G=.46)	5/16" DIA. X 3 1/2"	1 1/2"	1"	352	24"
WOOD SYP (G=.55)	5/16" DIA. X 3 1/2"	1 1/2"	1"	460	24"



Richard A. Baumann  
F.P.E #36469  
T.P.E # 85227  
698 Timber Creek Road  
Dixon Illinois 61021

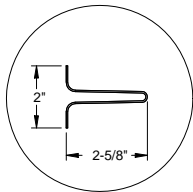
SCALE: NONE  
DRAWN BY: G. WEDEKIND  
CHECKED BY: G. WEDEKIND  
DATE: 02/08/94  
ECO:



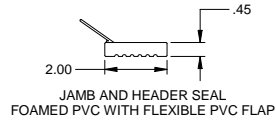
TITLE:  
SPEC, WINDLOAD  
SHOWCASE, MASTERPIECE

NO. P-1339

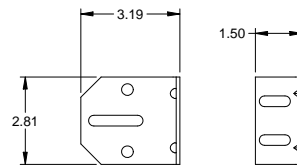
SHEET 2 OF 3  
REV F



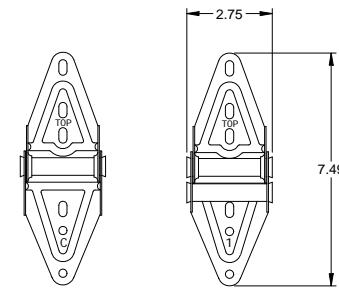
STEEL U-BAR DETAIL  
20 GA. (.035" MIN) GALVANIZED  
HIGH TENSILE STEEL 80 KSI MINIMUM YIELD



JAMB AND HEADER SEAL  
FOAMED PVC WITH FLEXIBLE PVC FLAP

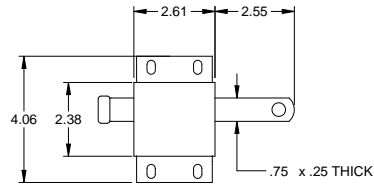


3" TRACK BRACKET  
.116 GALV. STEEL

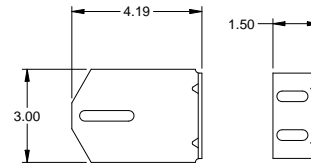


CENTER HINGE  
.045 GALV. STEEL

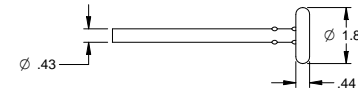
EDGE HINGE  
.086 GALV. STEEL



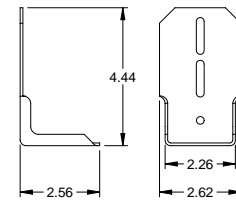
SLIDE LOCK  
CASE .086 GALV. STEEL



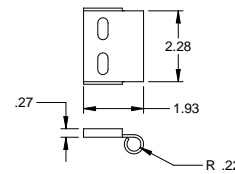
4" TRACK BRACKET  
.116 GALV. STEEL



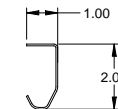
TRACK ROLLER



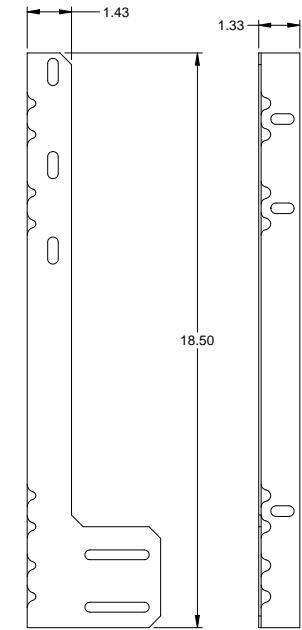
TOP FIXTURE  
.086 GALV. STEEL



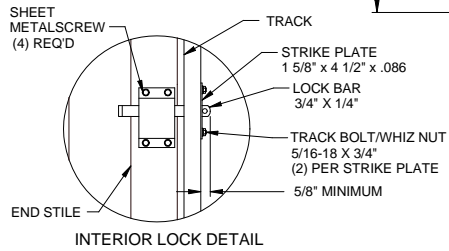
TOP ROLLER CARRIER  
.086 GALV. STEEL  
ATTACHED TO TOP FIXTURE WITH  
(2) TRACK BOLTS AND WHIZ NUTS



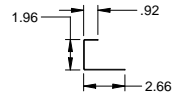
TRACK  
.055 GALV. STEEL



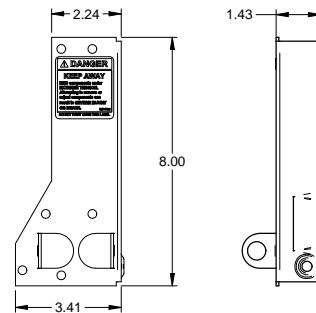
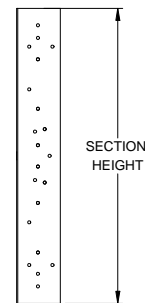
JAMB ANGLE  
.078 GALV. STEEL



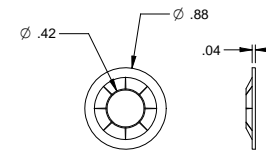
INTERIOR LOCK DETAIL



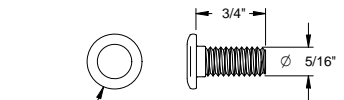
END STILE  
.043 GALV. STEEL



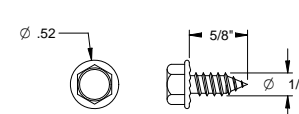
CORNER BRACKET  
.086 GALV. STEEL



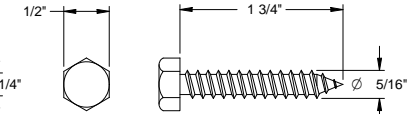
RETAINING NUT



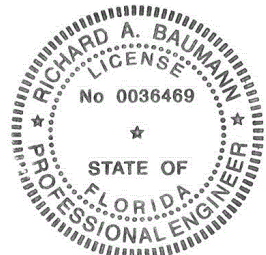
TRACK BOLT



SHEET METAL SCREW



HEX HEAD LAG SCREW



Richard A. Baumann  
F.P.E #36469  
T.P.E # 85227  
698 Timber Creek Road  
Dixon Illinois 61021

SCALE: NONE  
DRAWN BY: G. WEDEKIND  
CHECKED BY: G. WEDEKIND  
DATE: 02/08/94  
ECO:



TITLE:  
SPEC. WINDLOAD  
SHOWCASE, MASTERPIECE

NO. P-1339

SHEET  
3 OF 3

REV  
F