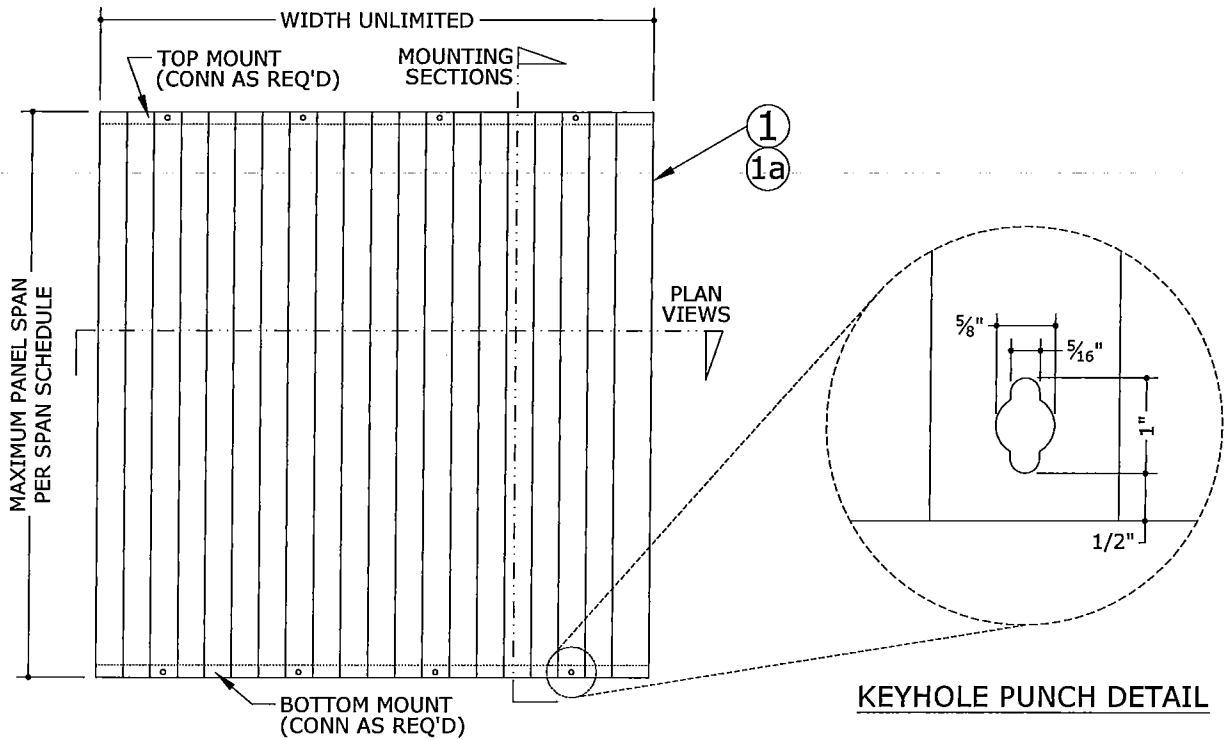
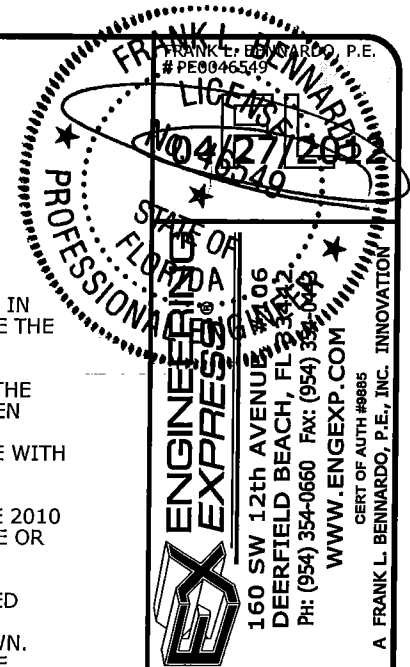
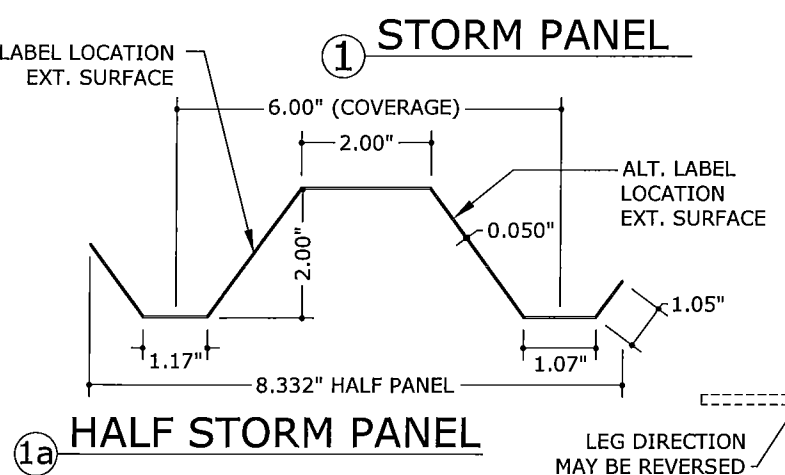
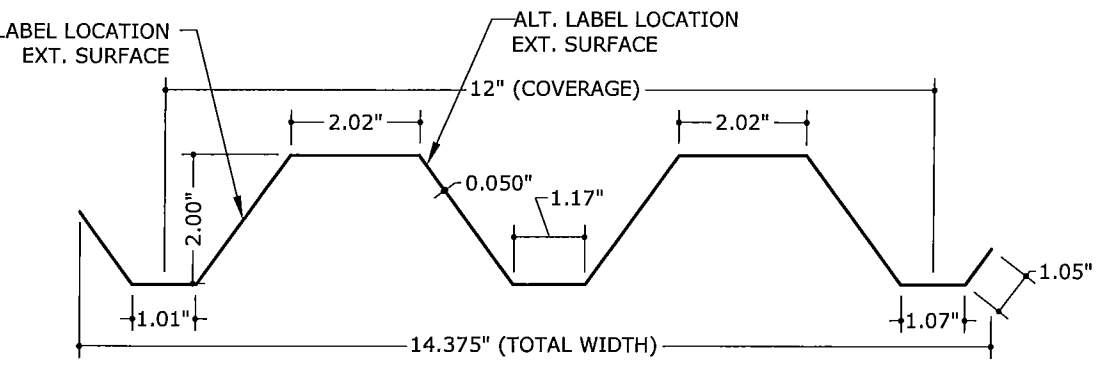


# 0.050" ALUMINUM STORM PANEL

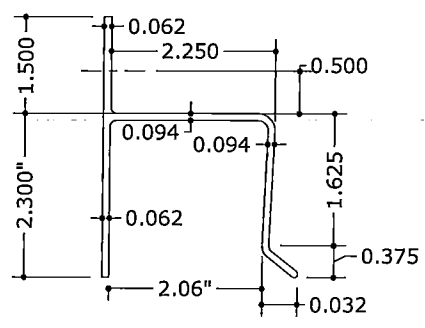
## NON-HVHZ



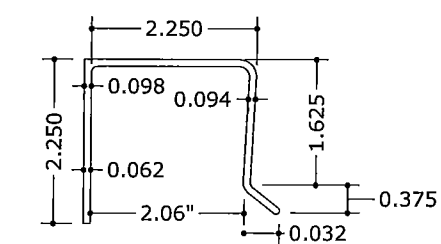
**1** TYPICAL ELEVATION  
1 N.T.S.



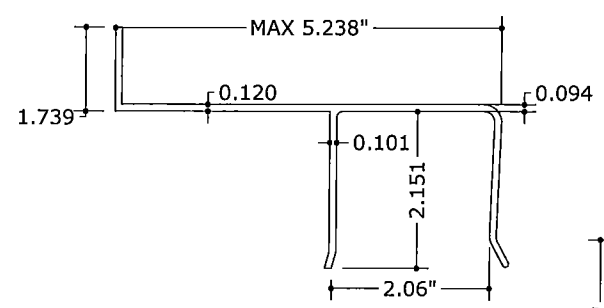
**1a** HALF STORM PANEL



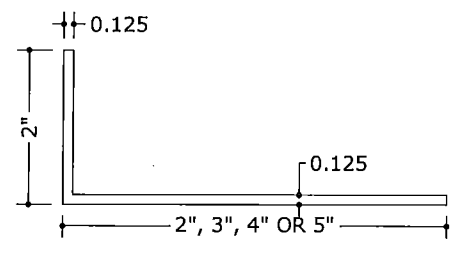
**2** "H" HEADER



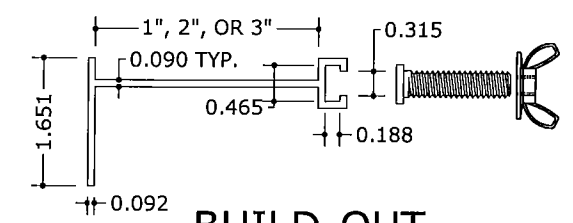
**3** "U" HEADER



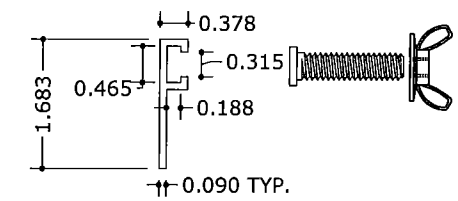
**3a** BUILD-OUT "U" HEADER



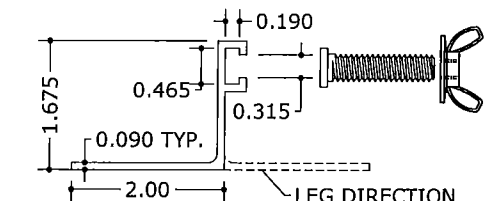
**5** ANGLE



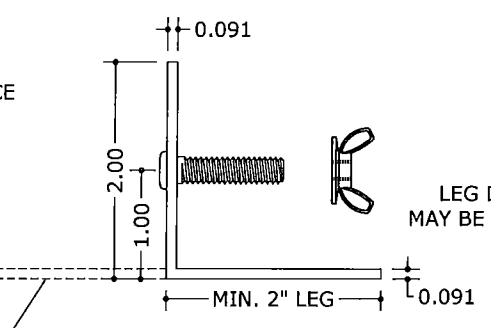
**6** BUILD-OUT "F" TRACK



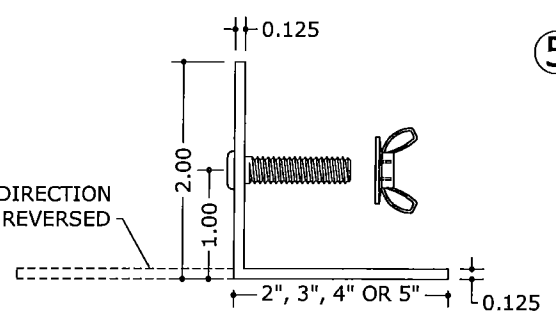
**7** "F" TRACK



**8** "F" ANGLE TRACK



**4** STUD ANGLE



**4a** ALT. STUD ANGLE

### GENERAL NOTES

1. THE SYSTEM DESCRIBED HEREIN HAS BEEN DESIGNED AND TESTED IN ACCORDANCE WITH THE 2010 FLORIDA BUILDING CODE, FOR USE OUTSIDE THE HIGH VELOCITY HURRICANE ZONE, PER ASTM E330, E1886, AND E1996 STANDARDS.
2. NO 33-1/3% INCREASE IN ALLOWABLE STRESS HAS BEEN USED IN THE DESIGN OF THIS SYSTEM. WIND LOAD DURATION FACTOR Cd=1.6 HAS BEEN USED FOR WOOD ANCHOR DESIGN.
3. POSITIVE AND NEGATIVE DESIGN PRESSURES CALCULATED FOR USE WITH THIS SYSTEM SHALL BE DETERMINED PER SEPARATE ENGINEERING IN ACCORDANCE WITH THE GOVERNING CODE. PRESSURE REQUIREMENTS AS DETERMINED IN ACCORDANCE WITH ASCE 7-10 AND CHAPTER 1609 OF THE 2010 FLORIDA BUILDING CODE SHALL BE LESS THAN OR EQUAL TO THE POSITIVE OR NEGATIVE DESIGN PRESSURE CAPACITY VALUES LISTED HEREIN FOR ANY ASSEMBLY AS SHOWN.
4. DESIGN PRESSURES NOTED HEREIN ARE BASED ON MAXIMUM TESTED PRESSURES DIVIDED BY A 1.5 SAFETY FACTOR.
5. MULTIPLE UNITS MAY BE INSTALLED TO UNLIMITED WIDTH AS SHOWN.
6. THE SYSTEM DETAILED HEREIN IS GENERIC AND DOES NOT PROVIDE INFORMATION FOR A SPECIFIC SITE. FOR SITE CONDITIONS DIFFERENT FROM THE CONDITIONS DETAILED HEREIN, A LICENSED ENGINEER OR REGISTERED ARCHITECT SHALL PREPARE SITE SPECIFIC DOCUMENTS FOR USE IN CONJUNCTION WITH THIS DOCUMENT.
7. PERMIT HOLDER SHALL VERIFY THE ADEQUACY OF THE EXISTING STRUCTURE TO WITHSTAND SUPERIMPOSED LOADS.
8. ALL STORM PANELS SHALL BE 5052-H32 ALUMINUM ALLOY AND HAVE A MINIMUM THICKNESS t=0.050".
9. ALL EXTRUSIONS SHALL BE 6063-T6 ALUMINUM ALLOY, UNLESS NOTED OTHERWISE.
10. HALF STORM PANEL CAN ONLY BE USED AS AN END PANEL TO CLOSE THE REMAINING OPENING THAT MAY BE LESS THAN FULL PANEL WIDTH
11. PANELS SHALL BE PERMANENTLY LABELED WITH A MINIMUM OF ONE LABEL PER PANEL CONTAINING THE FOLLOWING:  
FLORIDA SHUTTERS, INC.  
VERO BEACH, FLORIDA  
FLORIDA STATEWIDE APPROVED
12. TOP & BOTTOM DETAILS SHOWN MAY BE INTERCHANGED AS FIELD CONDITIONS DICTATE. PANELS MAY BE MOUNTED VERTICALLY OR HORIZONTALLY AS APPLICABLE.
13. USE OF KEYHOLE WASHERS IS OPTIONAL IN CONJUNCTION WITH ANY MOUNTING CONDITION. WASHERED WINGNUTS SHALL HAVE 0.865" MINIMUM WASHER DIAMETER.
14. ALL BOLTS & WASHERS SHALL BE ZINC COATED STEEL, GALVANIZED STEEL, OR STAINLESS STEEL WITH A MINIMUM TENSILE YIELD STRENGTH OF 60 KSI.
15. ALL STEEL IN CONTACT WITH ALUMINUM SHALL BE PAINTED OR PLATED AS PRESCRIBED IN THE ABOVE-NOTED BUILDING CODE.

**FLORIDA SHUTTERS, INC.**  
1055 COMMERCE AVENUE  
VERO BEACH, FL 32960  
PHONE: (772) 569 - 2200 FAX: (772) 567 - 3674  
0.050" ALUMINUM STORM PANELS  
NON-HVHZ  
FLORIDA STATEWIDE APPROVAL

DRWN	CHKD	DATE
FRGB	CL	11/11/08
FLB	FLB	04/26/12

REMARKS: INIT ISSUE 2010 FBC

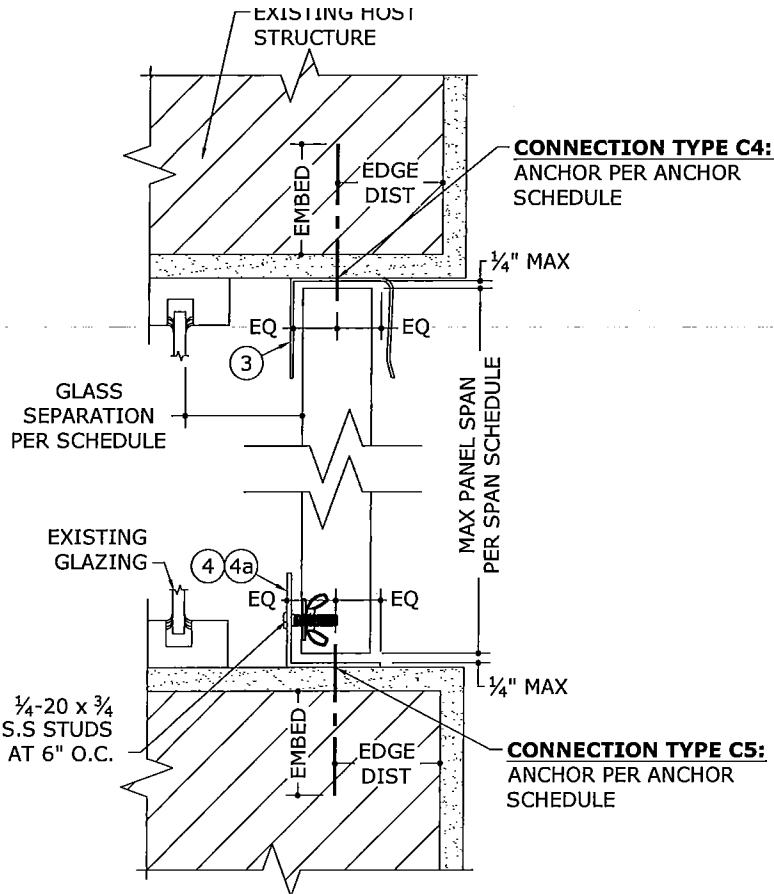
THIS DOCUMENT IS THE PROPERTY OF ENGINEERING EXPRESS AND SHALL NOT BE REPRODUCED IN WHOLE OR PART WITHOUT WRITTEN CONSENT OF THE CERTIFYING ENGINEER. ALTERATIONS, ADDITIONS, DELETIONS, OR OTHER MARKINGS TO THIS DOCUMENT ARE NOT PERMITTED AND INVALIDATE OUR CERTIFICATION.

COPYRIGHT ENGINEERING EXPRESS  
**07-FSH-0001**  
SCALE: 1/8" = 1'-0"  
PAGE DESCRIPTION:  
1 OF 4

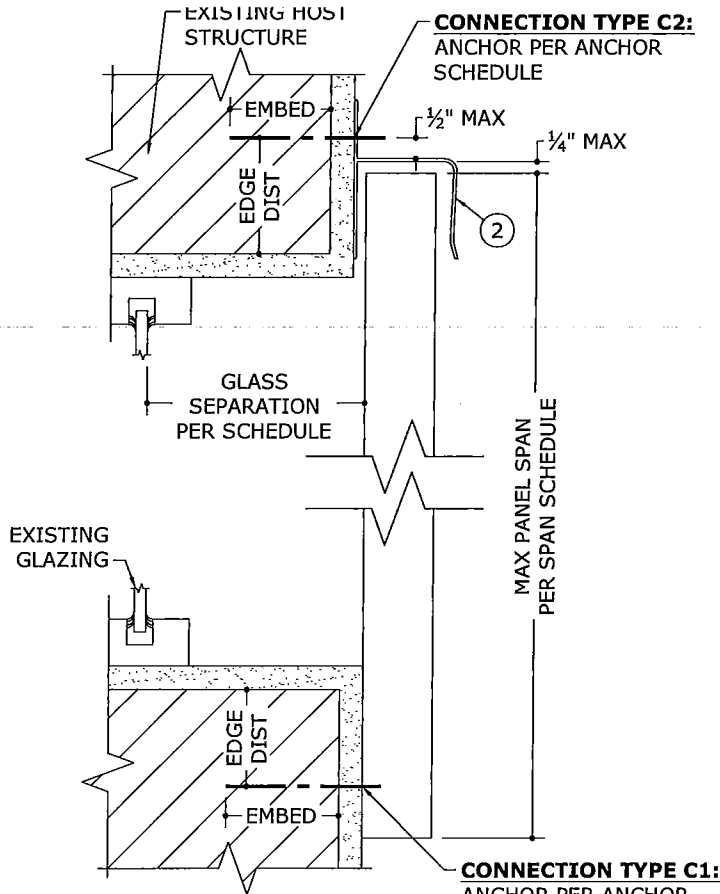
F:\01 Project Files\Florida Shutters (FSH)\2007\07-FSH-0001 0.050" Alum Storm Panel (FSA)\07-FSH-0001\_03a 0.050 Aluminum Storm Panels (FSA).dwg 04/27/2012 - 11:22am

F:\01 Project Files\Florida Shutters (FSH)\2007\07-FSH-001\_0.050" Alum Storm Panel (FSA)\07-FSH-001\_03a 0.050 Aluminum Storm Panels (FSA).dwg

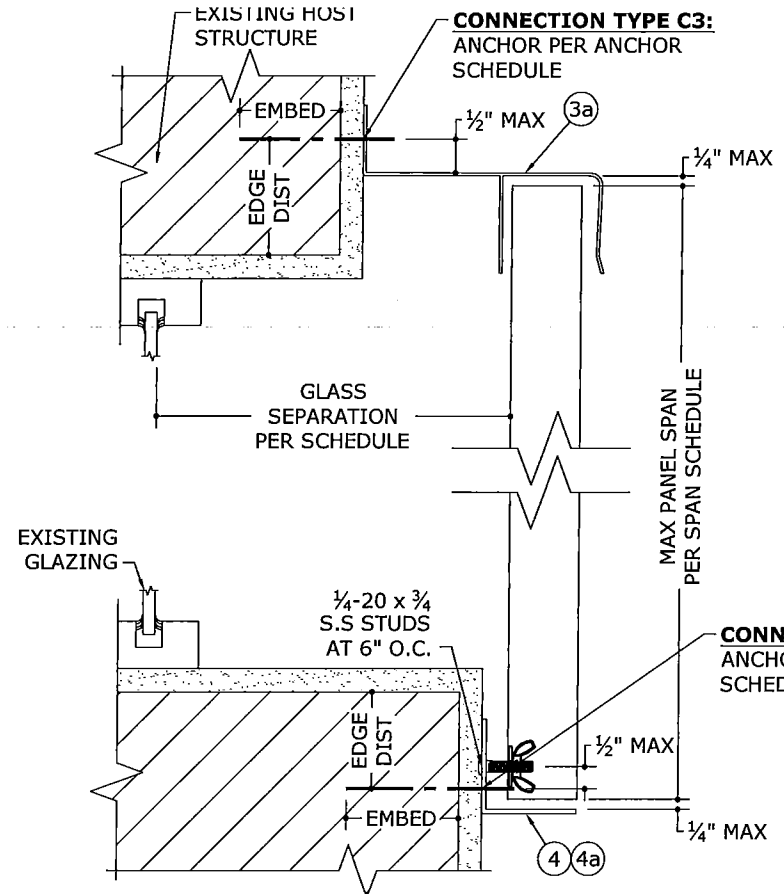
04/27/2012 - 11:22am



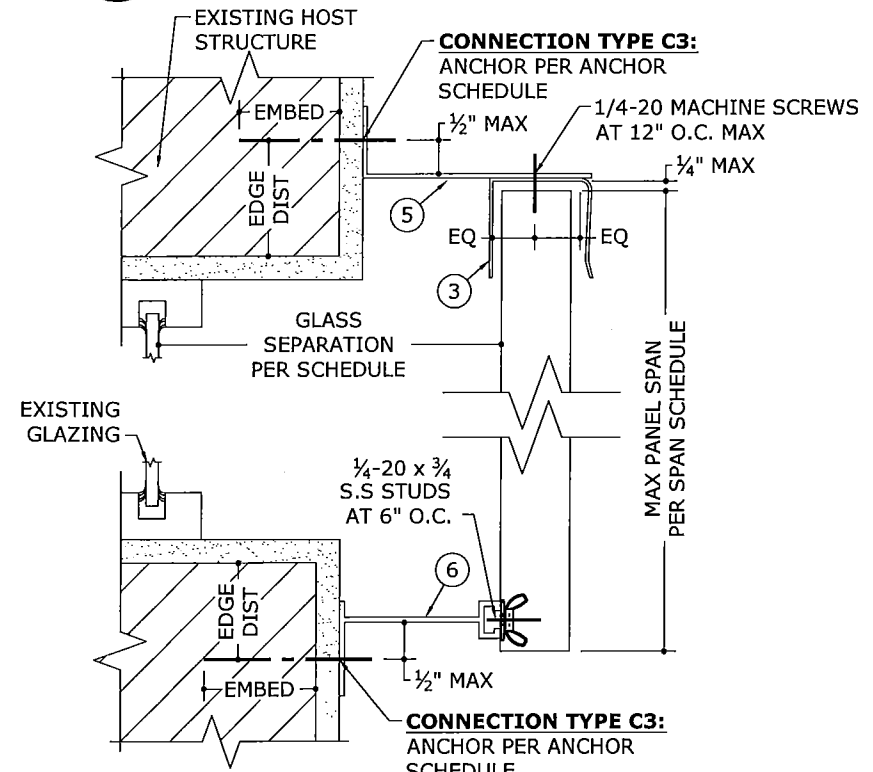
**1** "U" HEADER  
**2** STUDDED ANGLE  
N.T.S. MOUNTING SECTION



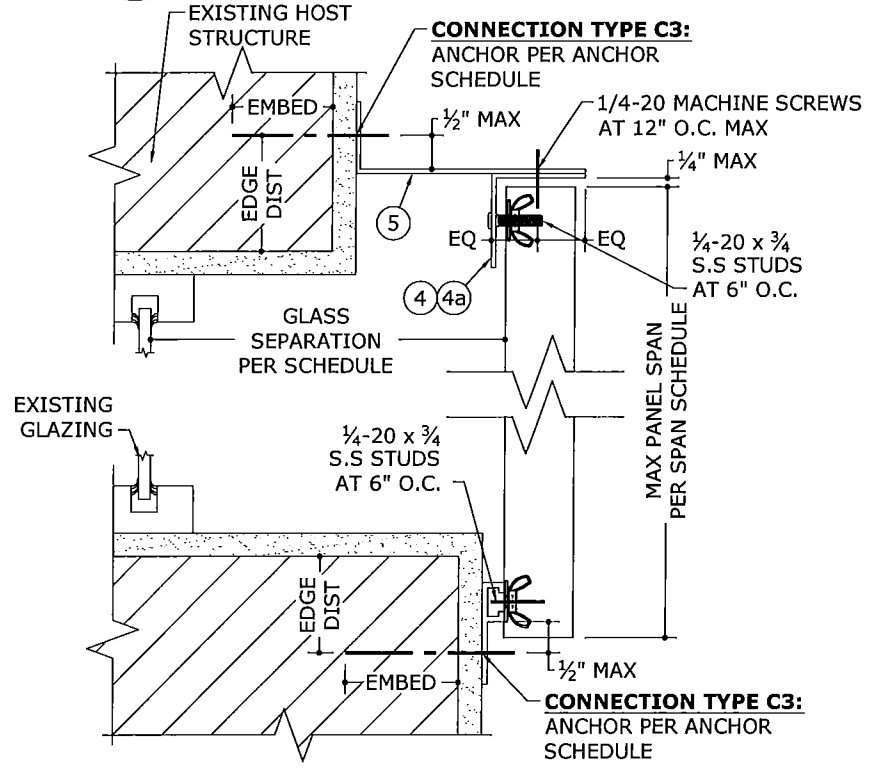
**2** "H" HEADER  
**2** DIRECT MOUNT  
N.T.S. MOUNTING SECTION



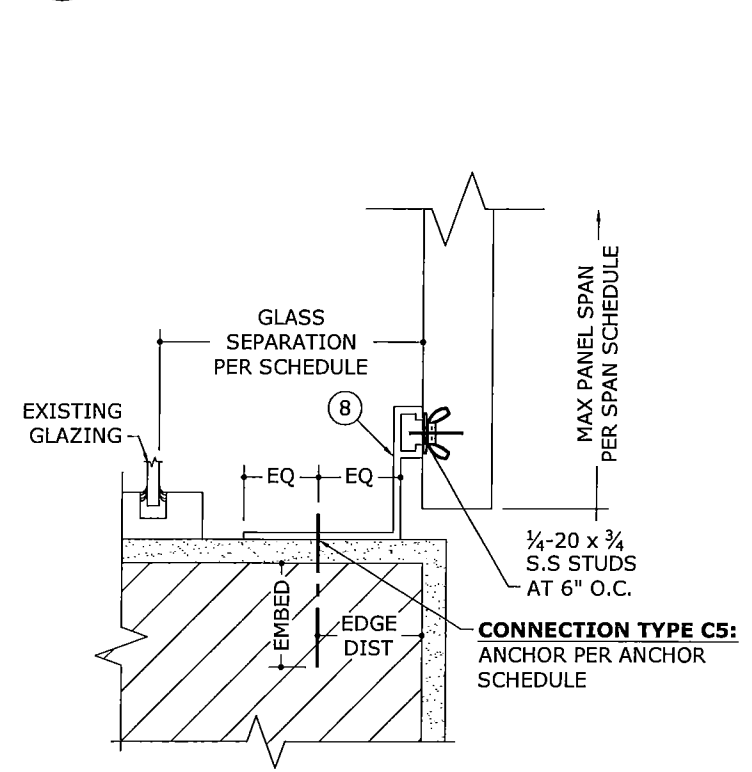
**3** BUILD-OUT "U" HEADER  
**2** STUDDED ANGLE  
N.T.S. MOUNTING SECTION



**4** 2"x5" + "U" HEADER  
**2** BUILD-OUT F-TRACK  
N.T.S. MOUNTING SECTION



**5** 2"x5" + STUDDED ANGLE  
**2** F-TRACK  
N.T.S. MOUNTING SECTION



**6** DIRECT MOUNT  
**2** F-ANGLE TRACK  
N.T.S. MOUNTING SECTION

FRANK L. BENNARDI, P.E.  
#PE0046549  
LIGEN  
NOV 20 12  
9416549  
STATE OF FLORIDA  
PROFESSIONAL ENGINEERING  
ENGINEERING EXPRESS, INC.  
160 SW 12th AVENUE, #106  
DEERFIELD BEACH, FL 33442  
Ph: (954) 354-0660 Fax: (954) 354-0663  
WWW.ENGEXP.COM  
CERT OF AUTH #9885  
A FRANK L. BENNARDI, P.E., INC. INNOVATION

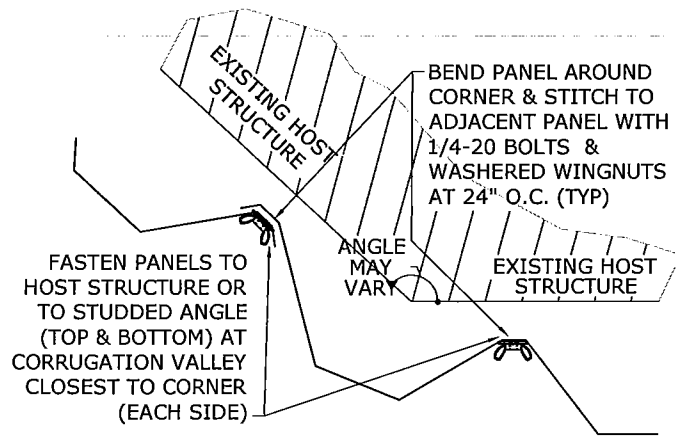
**FLORIDA SHUTTERS, INC.**  
1055 COMMERCE AVENUE  
VERO BEACH, FL 32960  
PHONE: (722) 569 - 2200 FAX: (772) 567 - 3674  
0.050" ALUMINUM STORM PANELS  
NON-HVHZ  
FLORIDA STATEWIDE APPROVAL

DRWN	CHKD	DATE
FKB	CL	11/1/08
FLB	FLB	04/26/12

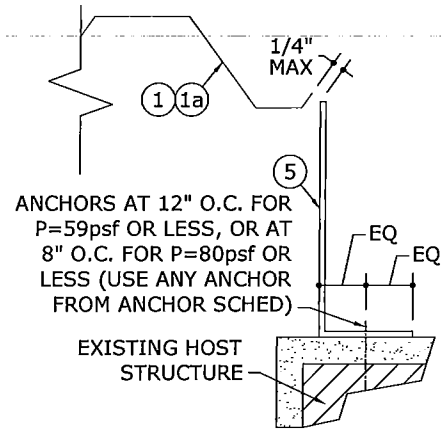
REMARKS  
INIT ISSUE  
2010 FBC

THIS DOCUMENT IS THE PROPERTY OF ENGINEERING EXPRESS AND SHALL NOT BE REPRODUCED IN WHOLE OR PART WITHOUT WRITTEN CONSENT OF THE CERTIFYING ENGINEER. ALTERATIONS, ADDITIONS, MISPLACINGS, OR OTHER IMPROVEMENTS TO THIS DOCUMENT ARE NOT PERMITTED AND WILL INVALENDATE OUR CONTRACTUAL OBLIGATION.

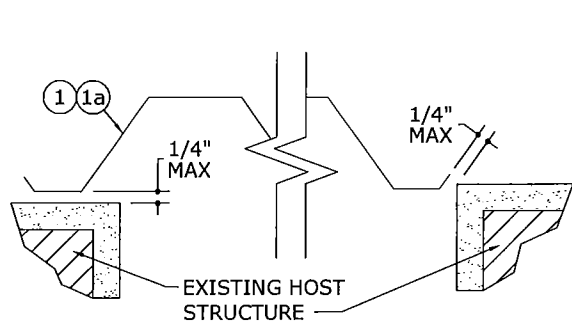
COPYRIGHT ENGINEERING EXPRESS  
**07-FSH-0001**  
SCALE: 03  
PAGE DESCRIPTION:  
OF 4  
**2**



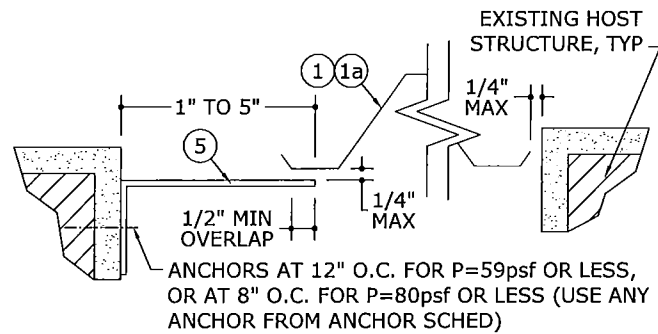
**1** CORNER CLOSURE  
4 N.T.S. PLAN VIEW



**2** BUILD-OUT CLOSURE  
4 N.T.S. PLAN VIEW



**3** WALL MOUNT CLOSURE  
4 N.T.S. PLAN VIEW



**4** TRAP MOUNT CLOSURE  
4 N.T.S. PLAN VIEW

**SPAN SCHEDULE:**

ALLOWABLE PRESSURES	MAX PANEL SPAN
30 psf	134.0 in
35 psf	130.1 in
40 psf	121.7 in
45 psf	114.8 in
50 psf	108.9 in
55 psf	103.8 in
60 psf	99.4 in
65 psf	95.5 in
70 psf	89.1 in
75 psf	83.2 in
80 psf	78.0 in

**SPAN SCHEDULE NOTES:**

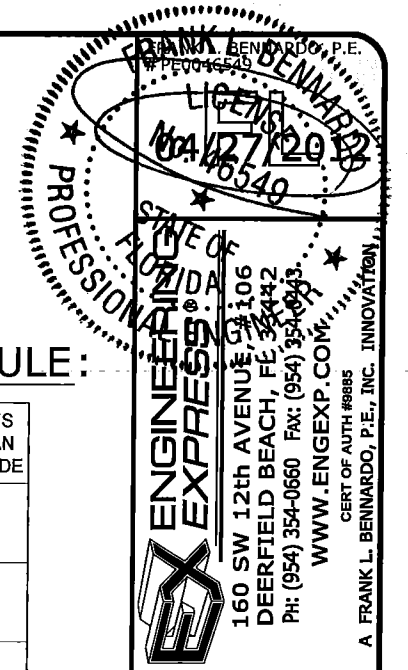
1. SPANS SHOWN IN "SPAN SCHEDULE" ABOVE ARE MAXIMUM ALLOWABLE SPANS AT EACH RESPECTIVE DESIGN PRESSURE. THIS SCHEDULE MAY BE USED FOR ALL PANELS MOUNTED WITH ANY COMBINATION OF EXTRUSIONS OR DIRECTLY TO HOST STRUCTURE.
5. TABLES ABOVE ARE VALID FOR PANELS MOUNTED HORIZONTALLY OR VERTICALLY.

**GLASS SEPARATION SCHEDULE:**

POSITIVE DESIGN LOAD	MAX PANEL SPAN	INSTALLATIONS LESS THAN 30' ABOVE GRADE	INSTALLATIONS GREATER THAN 30' ABOVE GRADE
30 PSF	6'-6"	5.23 "	1.19 "
	8'-8"	6.60 "	1.78 "
	11'-2"	6.60 "	3.15 "
40 PSF	6'-6"	5.23 "	1.26 "
	8'-8"	6.60 "	2.04 "
	10'-1"	6.60 "	2.91 "
50 PSF	6'-6"	5.23 "	1.32 "
	8'-8"	6.60 "	2.30 "
	9'-0"	6.60 "	2.51 "
60 PSF	6'-6"	5.23 "	1.39 "
	8'-3"	6.60 "	2.23 "
	70 PSF	6'-6"	5.23 "
7'-5"		6.60 "	1.85 "
80 PSF		6'-6"	5.23 "

**GLASS SEPARATION SCHEDULE NOTES:**

1. ENTER GLASS SEPARATION SCHEDULE WITH POSITIVE DESIGN LOAD TO DETERMINE MINIMUM ALLOWABLE SEPARATION FROM FENESTRATION TO BE PROTECTED.
2. SCHEDULE IS REQUIRED FOR USE WITH POSITIVE LOADS ONLY. FOR SPANS OR PRESSURES BETWEEN THOSE SHOWN, USE NEXT HIGHER VALUE.
3. FOR INSTALLATIONS OUTSIDE OF THE HVHZ, OUTSIDE OF ESSENTIAL FACILITIES, AND OUTSIDE OF ASTM WIND ZONE 4, THE GLASS SEPARATION SCHEDULE IS NOT REQUIRED AND NO MINIMUM SEPARATION FROM THE PROTECTED OPENING IS REQUIRED.



**FLORIDA SHUTTERS, INC.**  
1055 COMMERCE AVENUE  
VERO BEACH, FL 32960

PHONE: (772) 569 - 2200 FAX: (772) 567 - 3674  
0.050" ALUMINUM STORM PANELS  
NON-HVHZ

FLORIDA STATEWIDE APPROVAL

DRWN	CHKD	DATE
FKB	CL	11/1/08
FLB	FLB	04/26/12

REMARKS: INT ISSUE 2010 FBC

THIS DOCUMENT IS THE PROPERTY OF ENGINEERING EXPRESS AND SHALL NOT BE REPRODUCED IN WHOLE OR PART WITHOUT WRITTEN CONSENT OF THE CERTIFYING ENGINEER. ALTERATIONS, ADDITIONS, MISPLACING OR OTHER IMPROVINGS TO THIS DOCUMENT ARE NOT PERMITTED AND INVALIDATE OUR CERTIFICATION.

COPYRIGHT ENGINEERING EXPRESS  
**07-FSH-0001**

SCALE: 03  
PAGE DESCRIPTION:

HOST STRUCT.	ANCHOR	LOAD (psf)	2-1/2" MIN EDGE DISTANCE															
			Spans Up To 4'-0"					Spans Up To 8'-8"					Spans Up To 11'-2"					
			CONN TYPE					CONN TYPE					CONN TYPE					
			C1	C2	C3	C4	C5	C1	C2	C3	C4	C5	C1	C2	C3	C4	C5	
CONCRETE	1/4" ITW TAPCON WITH 1 3/4" MIN EMBED (3192psi MIN CONC)	35	6.0"	12.0"	12.0"	12.0"	12.0"	6.0"	12.0"	12.0"	12.0"	12.0"	12.0"	6.0"	12.0"	12.0"	12.0"	12.0"
		45	6.0"	12.0"	12.0"	12.0"	12.0"	6.0"	12.0"	12.0"	12.0"	12.0"	12.0"	6.0"	11.8"	12.0"	12.0"	12.0"
		55	6.0"	12.0"	12.0"	12.0"	12.0"	6.0"	12.0"	12.0"	12.0"	12.0"	12.0"	6.0"	11.4"	12.0"	12.0"	12.0"
		65	6.0"	12.0"	12.0"	12.0"	12.0"	6.0"	11.4"	12.0"	12.0"	12.0"	12.0"	6.0"	11.4"	12.0"	12.0"	12.0"
	1/4" ITW TAPCON SG WITH 1 3/4" MIN EMBED (3295psi MIN CONC)	35	6.0"	12.0"	12.0"	12.0"	12.0"	6.0"	12.0"	12.0"	12.0"	12.0"	12.0"	6.0"	12.0"	12.0"	12.0"	12.0"
		45	6.0"	12.0"	12.0"	12.0"	12.0"	6.0"	12.0"	12.0"	12.0"	12.0"	12.0"	6.0"	12.0"	12.0"	12.0"	12.0"
		55	6.0"	12.0"	12.0"	12.0"	12.0"	6.0"	12.0"	12.0"	12.0"	12.0"	12.0"	6.0"	12.0"	12.0"	12.0"	12.0"
		65	6.0"	12.0"	12.0"	12.0"	12.0"	6.0"	12.0"	12.0"	12.0"	12.0"	12.0"	6.0"	12.0"	12.0"	12.0"	12.0"
	1/4" ELCO FEMALE PANELMATE WITH 1 3/4" MIN EMBED (3323psi MIN CONC)	35	6.0"	12.0"	12.0"	12.0"	12.0"	6.0"	12.0"	12.0"	12.0"	12.0"	12.0"	6.0"	12.0"	12.0"	12.0"	12.0"
		45	6.0"	12.0"	12.0"	12.0"	12.0"	6.0"	12.0"	12.0"	12.0"	12.0"	12.0"	6.0"	11.8"	12.0"	12.0"	12.0"
		55	6.0"	12.0"	12.0"	12.0"	12.0"	6.0"	12.0"	12.0"	12.0"	12.0"	12.0"	6.0"	11.3"	12.0"	12.0"	12.0"
		65	6.0"	12.0"	12.0"	12.0"	12.0"	6.0"	11.3"	12.0"	12.0"	12.0"	12.0"	6.0"	11.3"	12.0"	12.0"	12.0"
1/4"-20 ALL POINTS SOLID-SET W/ 7/8" MIN EMBED (3000psi MIN CONC)	35	6.0"	12.0"	12.0"	12.0"	12.0"	6.0"	12.0"	12.0"	12.0"	12.0"	12.0"	6.0"	12.0"	12.0"	12.0"	12.0"	
	45	6.0"	12.0"	12.0"	12.0"	12.0"	6.0"	12.0"	12.0"	12.0"	12.0"	12.0"	6.0"	10.5"	12.0"	11.2"	12.0"	
	55	6.0"	12.0"	12.0"	12.0"	12.0"	6.0"	11.2"	12.0"	11.9"	12.0"	12.0"	6.0"	10.1"	12.0"	10.7"	12.0"	
	65	6.0"	12.0"	12.0"	12.0"	12.0"	6.0"	10.1"	12.0"	10.7"	12.0"	12.0"	6.0"	10.1"	12.0"	10.7"	12.0"	

HOST STRUCT.	ANCHOR	LOAD (psf)	2-1/2" MIN EDGE DISTANCE															
			Spans Up To 4'-0"					Spans Up To 8'-8"					Spans Up To 11'-2"					
			CONN TYPE					CONN TYPE					CONN TYPE					
			C1	C2	C3	C4	C5	C1	C2	C3	C4	C5	C1	C2	C3	C4	C5	
HOLLOW BLOCK	1/4" ITW TAPCON WITH 1 3/4" MIN EMBED	35	6.0"	12.0"	12.0"	12.0"	12.0"	6.0"	5.3"	10.1"	5.6"	10.1"	6.0"	3.8"	7.9"	4.0"	7.9"	
		45	6.0"	12.0"	12.0"	12.0"	12.0"	6.0"	3.8"	7.9"	4.0"	7.9"	6.0"	6.1"	6.0"	6.0"		
		55	6.0"	8.6"	12.0"	9.0"	12.0"	6.0"	3.0"	6.4"	3.1"	6.4"	5.9"	5.9"	5.9"	5.7"	5.7"	
		65	6.0"	6.6"	11.8"	7.0"	11.8"	5.9"	5.9"	5.9"	5.7"	5.9"	5.9"	5.9"	5.9"	5.9"	5.7"	5.7"
	1/4" ITW TAPCON SG W/ 1 3/4" MIN EMBED	35	6.0"	12.0"	12.0"	12.0"	12.0"	6.0"	12.0"	12.0"	12.0"	12.0"	12.0"	6.0"	11.5"	12.0"	12.0"	12.0"
		45	6.0"	12.0"	12.0"	12.0"	12.0"	6.0"	11.5"	12.0"	12.0"	12.0"	12.0"	6.0"	8.4"	12.0"	8.9"	10.4"
		55	6.0"	12.0"	12.0"	12.0"	12.0"	6.0"	8.9"	12.0"	9.5"	11.0"	6.0"	8.1"	12.0"	8.6"	10.0"	
		65	6.0"	12.0"	12.0"	12.0"	12.0"	6.0"	8.1"	12.0"	8.6"	10.0"	6.0"	8.1"	12.0"	8.6"	10.0"	
	1/4" ELCO FEMALE PANELMATE W/ 1 3/4" MIN EMBED & 3" MIN EDGE DISTANCE	35	6.0"	12.0"	12.0"	12.0"	12.0"	6.0"	8.7"	12.0"	9.2"	12.0"	6.0"	6.2"	12.0"	6.6"	12.0"	
		45	6.0"	12.0"	12.0"	12.0"	12.0"	6.0"	6.2"	12.0"	6.6"	12.0"	6.0"	4.5"	10.0"	4.8"	9.5"	
		55	6.0"	12.0"	12.0"	12.0"	12.0"	6.0"	4.8"	10.6"	5.2"	10.0"	6.0"	4.4"	9.7"	4.6"	9.2"	
		65	6.0"	10.9"	12.0"	11.5"	12.0"	6.0"	4.4"	9.7"	4.6"	9.2"	6.0"	4.4"	9.7"	4.6"	9.2"	
1/4"-20 ALL POINTS SOLID-SET WITH 7/8" MIN EMBED	35	6.0"	12.0"	12.0"	12.0"	12.0"	6.0"	12.0"	12.0"	12.0"	12.0"	12.0"	6.0"	8.9"	12.0"	9.4"	12.0"	
	45	6.0"	12.0"	12.0"	12.0"	12.0"	6.0"	8.9"	12.0"	9.5"	12.0"	6.0"	6.5"	12.0"	6.9"	12.0"		
	55	6.0"	12.0"	12.0"	12.0"	12.0"	6.0"	6.9"	12.0"	7.4"	12.0"	6.0"	6.3"	12.0"	6.7"	11.9"		
	65	6.0"	12.0"	12.0"	12.0"	12.0"	6.0"	6.3"	12.0"	6.7"	11.9"	6.0"	6.3"	12.0"	6.7"	11.9"		

HOST STRUCT.	ANCHOR	LOAD (psf)	3/4" MIN EDGE DISTANCE															
			Spans Up To 4'-0"					Spans Up To 8'-8"					Spans Up To 11'-2"					
			CONN TYPE					CONN TYPE					CONN TYPE					
			C1	C2	C3	C4	C5	C1	C2	C3	C4	C5	C1	C2	C3	C4	C5	
WOOD	1/4" ITW TAPCON OR #14 WOOD SCREW W/ 1 7/8" MIN EMBED	35	6.0"	12.0"	12.0"	12.0"	12.0"	6.0"	12.0"	12.0"	12.0"	12.0"	12.0"	6.0"	12.0"	12.0"	12.0"	12.0"
		45	6.0"	12.0"	12.0"	12.0"	12.0"	6.0"	12.0"	12.0"	12.0"	12.0"	12.0"	6.0"	12.0"	12.0"	11.4"	11.4"
		55	6.0"	12.0"	12.0"	12.0"	12.0"	6.0"	12.0"	12.0"	12.0"	12.0"	12.0"	6.0"	12.0"	12.0"	11.1"	11.1"
		65	6.0"	12.0"	12.0"	12.0"	12.0"	6.0"	12.0"	12.0"	11.1"	11.1"	12.0"	6.0"	12.0"	12.0"	11.1"	11.1"
	1/4" ELCO FEMALE PANELMATE W/ 1 7/8" MIN EMBED	35	6.0"	12.0"	12.0"	12.0"	12.0"	6.0"	12.0"	12.0"	12.0"	12.0"	12.0"	6.0"	12.0"	12.0"	12.0"	12.0"
		45	6.0"	12.0"	12.0"	12.0"	12.0"	6.0"	12.0"	12.0"	12.0"	12.0"	12.0"	6.0"	12.0"	12.0"	12.0"	12.0"
		55	6.0"	12.0"	12.0"	12.0"	12.0"	6.0"	12.0"	12.0"	12.0"	12.0"	12.0"	6.0"	12.0"	12.0"	12.0"	12.0"
		65	6.0"	12.0"	12.0"	12.0"	12.0"	6.0"	12.0"	12.0"	12.0"	12.0"	12.0"	6.0"	12.0"	12.0"	12.0"	12.0"
	1/4" LAG SCREW WITH 1 7/8" MIN EMBED	35	6.0"	12.0"	12.0"	12.0"	12.0"	6.0"	12.0"	12.0"	12.0"	12.0"	12.0"	6.0"	12.0"	12.0"	10.8"	10.8"
		45	6.0"	12.0"	12.0"	12.0"	12.0"	6.0"	12.0"	12.0"	12.0"	12.0"	12.0"	6.0"	12.0"	12.0"	8.4"	8.4"
		55	6.0"	12.0"	12.0"	12.0"	12.0"	6.0"	12.0"	12.0"	8.8"	8.8"	12.0"	6.0"	12.0"	12.0"	8.1"	8.1"
		65	6.0"	12.0"	12.0"	12.0"	12.0"	6.0"	12.0"	12.0"	8.1"	8.1"	12.0"	6.0"	12.0"	12.0"	8.1"	8.1"

### ANCHOR NOTES:

- ANCHORS SHALL BE INSTALLED IN ACCORDANCE WITH MANUFACTURERS' RECOMMENDATIONS.
- TAPCONS SHALL BE MANUFACTURED BY ITW. "ELCO PANELMATE" ANCHORS FOR USE IN CONCRETE OR HOLLOW BLOCK SHALL BE FEMALE ONLY.
- ENSURE MINIMUM 2-1/2" EDGE DISTANCE FOR ALL ANCHORS TO CONCRETE & TO HOLLOW BLOCK, UNLESS NOTED OTHERWISE.
- WHERE ANCHORS FASTEN TO NARROW FACE OF STUD FRAMING, ANCHOR SHALL BE LOCATED IN CENTER OF NOMINAL 2x (MIN) WOOD STUD (i.e. 3/4" EDGE DISTANCE IS ACCEPTABLE FOR ANCHORS TO WOOD FRAMING).
- WOOD HOST STRUCTURE SHALL BE "SOUTHERN PINE" G=0.55 OR GREATER DENSITY.
- MINIMUM EMBEDMENT SHALL BE AS NOTED IN ANCHOR SCHEDULE. MINIMUM EMBEDMENT AND EDGE DISTANCE EXCLUDES STUCCO, FOAM, BRICK, AND OTHER WALL FINISHES.
- WHERE EXISTING STRUCTURE IS WOOD FRAMING, EXISTING CONDITIONS MAY VARY. FIELD VERIFY THAT FASTENERS ARE INTO ADEQUATE WOOD FRAMING MEMBERS, NOT INTO PLYWOOD.
- MACHINE SCREWS SHALL HAVE MINIMUM OF 1/2" ENGAGEMENT OF THREADS IN BASE ANCHOR AND MAY HAVE EITHER A PAN HEAD, TRUSS HEAD, OR WAFER HEAD ("SIDEWALK BOLT") U.N.O.
- DESIGNATES ANCHOR CONDITIONS WHICH ARE NOT ACCEPTABLE FOR USE.
- \* DESIGNATES ANCHORS WHICH ARE REMOVABLE AND MAY BE USED FOR DIRECT MOUNT INSTALLATIONS.

FRANK L. BENNARDO, P.E.  
 PROFESSIONAL ENGINEERING EXPRESS  
 No. 46549  
 160 SW 12th Avenue, #106  
 DEERFIELD BEACH, FL 33442  
 Ph: (954) 354-0660 FAX: (954) 354-0443  
 WWW.ENGEXPRESS.COM  
 CERT OF AUTH #8887  
 A FRANK L. BENNARDO, P.E., INC. INNOVATION

**FLORIDA SHUTTERS, INC.**  
 1055 COMMERCE AVENUE  
 VERO BEACH, FL 32960  
 PHONE: (772) 569 - 2200 FAX: (772) 567 - 3674  
 0.050" ALUMINUM STORM PANELS  
 NON-HVHZ  
 FLORIDA STATEWIDE APPROVAL

DRWN	CHKD	DATE
FRKB	CL	11/1/08
FLB	FLB	04/26/12

REMARKS: INT ISSUE 2010 FBC

THIS DOCUMENT IS THE PROPERTY OF ENGINEERING EXPRESS AND SHALL NOT BE REPRODUCED IN WHOLE OR PART WITHOUT WRITTEN CONSENT OF THE CERTIFYING ENGINEER. ANY REVISIONS, ADDITIONS, DELETIONS OR OTHER MARKINGS TO THIS DOCUMENT ARE NOT PERMITTED AND INVALIDATE THE CERTIFICATION.

COPYRIGHT ENGINEERING EXPRESS

07-FSH-0001  
 SCALE: 1/8" = 1'-0"  
 PAGE DESCRIPTION: 03