

# ALPOLIC and ALPOLIC/FR (FIRE RESISTIVE) COMPOSITE WALL PANEL SYSTEMS FOR SMALL MISSILE IMPACT

## GENERAL NOTES

- THESE ALPOLIC AND ALPOLIC/FR COMPOSITE PANELS SHALL BE USED FOR WALL CONSTRUCTION, SOFITS, AND OTHER EXTERIOR DETAILS WHOSE REQUIREMENTS FOR POSITIVE AND NEGATIVE PRESSURES ARE WITHIN THEN VALUES STATED IN NOTE 2 OF THIS DRAWING. EACH ACTUAL WALL PROJECT SHALL BE CONSTRUCTED USING THE DETAILS SHOWN ON THESE DRAWINGS AS MINIMUM REQUIRED SPECIFICATIONS
- THE WALL DESIGN ALLOWABLE PRESSURES FOR THESE WALL PANEL SYSTEMS ARE:
  - KISTLER McDOUGALL EXTRUSIONS: + 153 PSF/ -153 PSF
  - SAF METAL FABRICATION EXTRUSIONS: + 70 PSF/ -90 PSF.
- THESE ALPOLIC and ALPOLIC/fr COMPOSITE WALL PANEL SYSTEMS ARE TESTED IN ACCORDANCE WITH THE FOLLOWING PROTOCOLS PER THE CURRENT EDITION OF THE FLORIDA BUILDING CODE:
  - TAS-201-94, IMPACT TEST, SMALL MISSILE
  - TAS-202-94, UNIFORM STATIC AIR PRESSURE TEST
  - TAS-203-94, CYCLIC WIND PRESSURE TEST
 AND THEY SHALL BE INSTALLED AS SHOWN IN THESE APPROVED DRAWINGS.

## MATERIAL SPECIFICATIONS:

### ALUMINUM EXTRUSIONS

- MATERIAL: M2, F2, A2, HS, and HR ARE EXTRUDED ALUMINUM ALLOY 6063 WITH A T6 TEMPER By Kistler McDougall.
- MATERIAL: 37893 (CAY-1009) TEE, 37894 (CAY-1010) FEMALE, 37899 (CAY-1011) MALE, 38500B (CAY-1012) STIFFENER AND 38499A (CAY-1013) RETAINER ARE EXTRUDED ALUMINUM ALLOY 6063 WITH A T6 TEMPER By SAF Metal Fabrication (FORMALLY CAY ARCHITECTURAL PRODUCTS).
- FINISH: MILL FINISH


### COMPOSITE PANEL

- ALPOLIC AND ALPOLIC/FR ALUMINUM COMPOSITE METAL PANEL 4MM THICK (0.157") AND 6MM THICK (0.236") AS MANUFACTURED BY MITSUBISHI PLASTICS COMPOSITES AMERICA, INC., CHESAPEAKE, VA
- CORE: THERMOPLASTIC MATERIAL WHICH IN COMPOSITE ASSEMBLY MEETS PERFORMANCE CHARACTERISTICS SPECIFIED.
- FACE SHEET: 0.020" ALUMINUM 3105-H14 ALLOY
- FINISH: FLUROPOLYMER RESIN COATING.
- MAXIMUM DIMENSIONS: 62" WIDE X 288" LONG
- TECHNICAL DATA

### FRAMING & ACCESSORIES

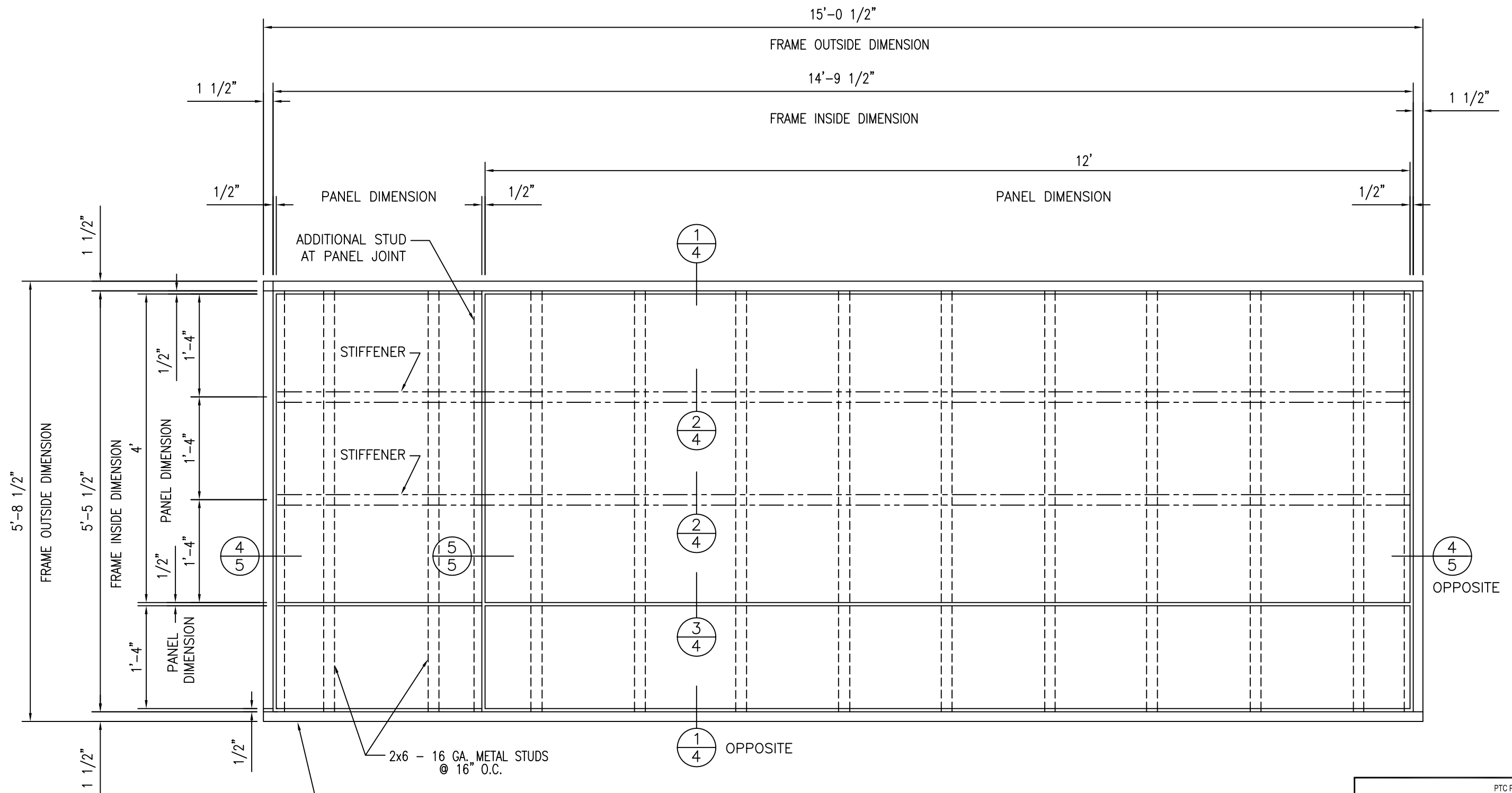
- STEEL STUDS AND TRACKS: 16 GA. MIN. GALVANIZED STEEL WITH MIN. PROPERTIES OF 50 KSI YIELD, 65 KSI ULTIMATE.
- STUD & TRACK FASTENERS: #12 x 1-1/2" HEX WASHER HEAD HEAVY DUTY TEKS 4, 4.5, OR 5 BY ITW BUILDEX SCREW OR STUD & TRACK FASTENERS: #12 x 1-1/2" HEX WASHER HEAD TEKS SELECT BY ITW BUILDEX SCREW.
- PANEL FASTENERS: #10 x 1" HEX WASHER HEAD ITW BUILDEX TEK SCREWS SPACED AT 16" O.C.
- STIFFENER FASTENERS: #10 x 1" HEX WASHER HEAD ITW BUILDEX TEK SCREWS.
- JOINT SILICONE: DOW CORNING #795 SILICONE SEALANT.
- STRUCTURAL SILICONE: DOW CORNING #1199 SILICONE SEALANT.
- BACKER ROD: 3/4" DIA. DENVER FOAM OPEN CELL BACKER ROD.
- THE STRUCTURAL ADEQUACY OF THE 16 GA. GALVANIZED STEEL STUDS AND THE REST OF THE STRUCTURAL FRAMING SUPPORTING THE METAL PANELS IS NOT PART OF THIS PRODUCT CONTROL APPROVAL AND IT SHALL BE REVIEWED BY THE STRUCTURAL PLANS EXAMINER OF THE CORRESPONDING BUILDING DEPARTMENT.

DESCRIPTION	TEST	4MM ALPOLIC	4MM ALPOLIC/fr	6MM ALPOLIC
SPECIFIC GRAVITY		1.38	1.90	1.23
WEIGHT		1.12 LB/SQ.FT	1.56 LB/SQ.FT	1.50 LB/SQ.FT
TENSILE STRENGTH	ASTM E-8	7452 PSI	5693 PSI	5399 PSI
YIELD STRENGTH	ASTM E-8	NDY	NDY	NDY
ELONGATION	ASTM E-8	16%	8%	13%
PUNCHING SHEAR RESISTANCE (1"DIA.)	ASTM D-732	4025 PSI	4637 PSI	2816 PSI
PUNCHING SHEAR MAX LOAD	ASTM D-732	1920 PSI	2259 PSI	2121 LBS
BOND INTEGRITY VERTICAL PULL	ASTM C-297	1806 PSI	427 PSI	1664 PSI
DRUM PEEL	ASTM D-1781-76	33.6 IN-LB/IN	27.6 IN-LB/IN	33.6 IN-LB/IN
FLATWISE SHEAR	ASTM C-273	1225 PSI	949 PSI	1195 PSI
RATE OF BURNING	ASTM D-635	CC1	--	--
FLAME SPREAD INDEX	ASTM E-84	00	00	00
SMOKE DEVELOPED INDEX	ASTM E-84	00	10	10
SELF IGNITION TEMPERATURE	ASTM D-1929	752°F	837°F	752°F
FLASH IGNITION TEMPERATURE	ASTM D-1929	716°F	811°F	716°F
SURFACE FLAMMABILITY	ASTM E-108-88	PASSED	PASSED	PASSED
SOUND TRANSMISSION	ASTM E-413	STC-26	--	STC-26

UNLESS OTHERWISE SPECIFIED DIMENSIONS ARE IN INCHES TOLERANCES ARE: FRACTIONS    DECIMALS    ANGLES ± 1/32    .XX ± .01    ± 1/2 .XXX ± .005		CONTRACT NO.		 PTC PRODUCT DESIGN GROUP, LLC PO BOX 520775 LONGWOOD, FLORIDA 32752 FBPE C.A. NO. 25935 Phone: 321.690.1788, Fax: 321.690.1789 Email: info@ptc-corp.com				
MATERIAL		APPROVALS	DATE					
FINISH		ENGINEERING	MS	11/11/02	<b>MITSUBISHI CHEMICAL COMPOSITES AMERICA, INC.</b>  ALPOLIC and ALPOLIC/fr COMPOSITE WALL PANEL SYSTEMS			
DO NOT SCALE DRAWING		PROJ MGMT		SIZE		CAGE CODE	DWG NO.	REV
		PRODUCTION		B			MPCA0002	6
6	RJA	4/14/17	NAME CHANGE TO MITSUBISHI CHEMICAL COMPOSITES AMERICA					
5	RJA	4/24/14	UPDATE TO CURRENT EDITION OF THE FBC					
4	RJA	6/10/12	UPDATE TO 2010 FBC					
3	TH	1/10/12	EXTRUSION AND PANEL NOTE CHANGES					
1	TH	9/01/09	GEN NOTE 1 WAS WALL CONSTRUCTION ONLY					
REV.	BY	DATE	CHANGE					

PTC PRODUCT DESIGN GROUP, LLC  
 PO BOX 520775  
 LONGWOOD, FLORIDA 32752  
 FBPE C.A. NO. 25935  
 Phone: 321.690.1788, Fax: 321.690.1789  
 Email: info@ptc-corp.com

<b>MITSUBISHI CHEMICAL COMPOSITES AMERICA, INC.</b>	
ALPOLIC and ALPOLIC/fr COMPOSITE WALL PANEL SYSTEMS	
SIZE	CAGE CODE
B	
DWG NO.	REV
MPCA0002	6
SCALE SHOWN	SHEET 1 OF 11



THE WOOD BUCK FRAME DETAILED IN THIS DRAWING IS FOR TEST PURPOSES ONLY AND IS NOT INTENDED AS A RECOMMENDATION FOR ACTUAL CONSTRUCTION.

## PANEL ELEVATION

3/4" = 1'-0"

Robert J. Amoruso, P.E.  
FL P.E. No. 49752

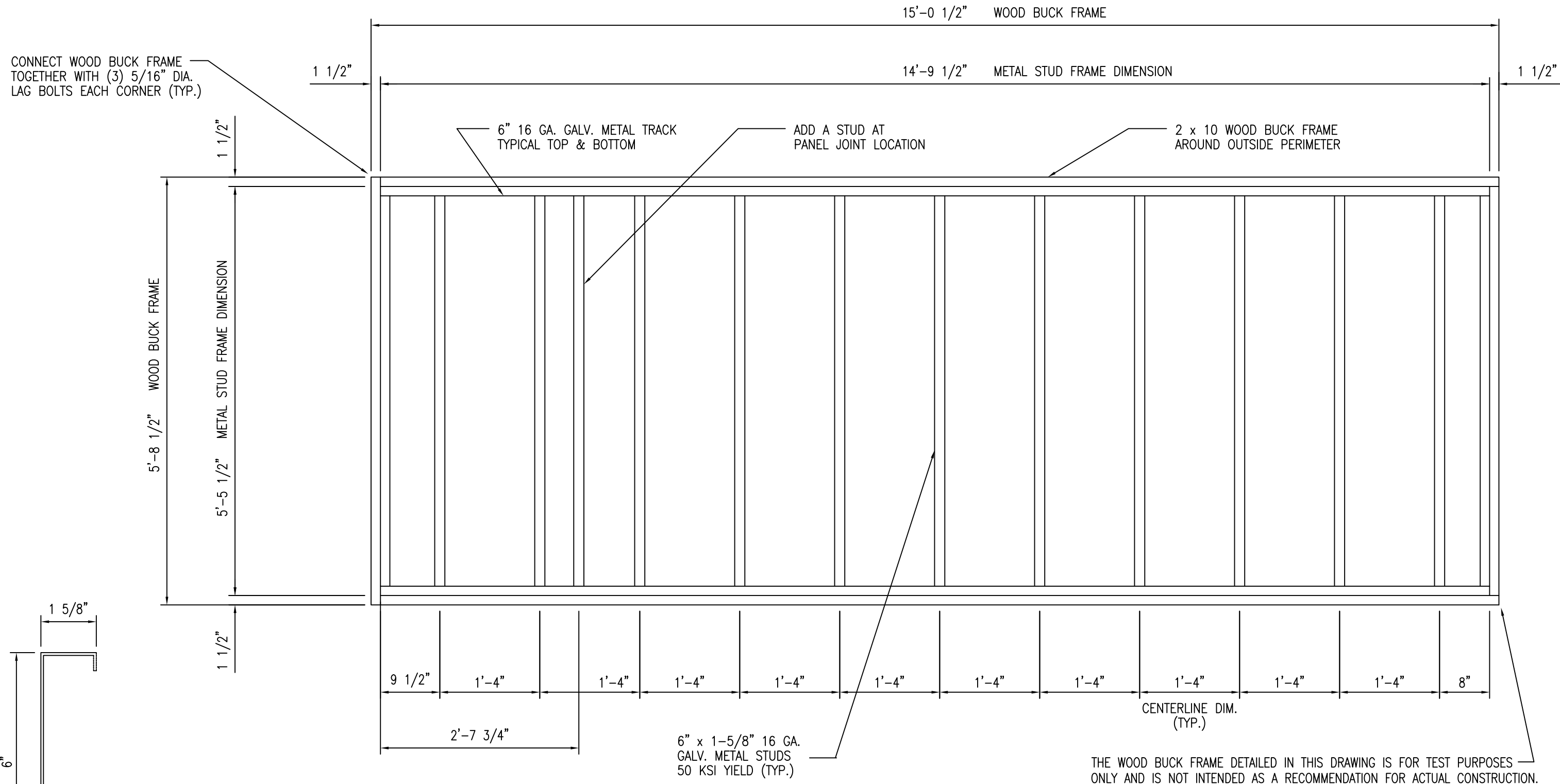
REV.	BY	DATE	CHANGE
6	RJA	4/14/17	NAME CHANGE TO MITSUBISHI CHEMICAL COMPOSITES AMERICA
5	RJA	4/24/14	UPDATE TO CURRENT EDITION OF THE FBC
4	RJA	6/10/12	UPDATE TO 2010 FBC
3	TH	1/10/12	MITSUBISHI PLASTICS COMPOSITES WAS MITSUBISHI CHEMICAL

UNLESS OTHERWISE SPECIFIED DIMENSIONS ARE IN INCHES TOLERANCES ARE:		
FRACTIONS	DECIMALS	ANGLES
± 1/32	.XX ± .01	± 1/2
	.XXX ± .005	

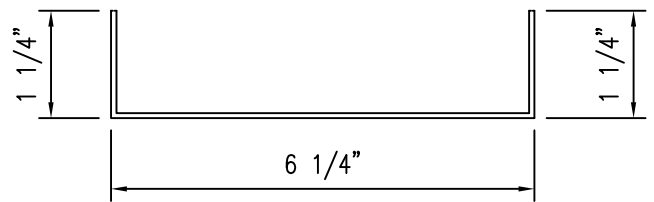
CONTRACT NO.	
APPROVALS	DATE
DRAWN	
ENGINEERING	MS 11/11/02
PROJ MGMT	
PRODUCTION	

**PTC** PRODUCT DESIGN GROUP, LLC  
 PO BOX 520775  
 LONGWOOD, FLORIDA 32752  
 FBPE C.A. NO. 25935  
 Phone: 321.690.1788, Fax: 321.690.1789  
 Email: info@ptc-corp.com

Kistler McDougall			
<b>MITSUBISHI CHEMICAL COMPOSITES AMERICA, INC.</b>			
ALPOLIC and ALPOLIC/fr COMPOSITE WALL PANEL SYSTEMS			
SIZE	CAGE CODE	DWG NO.	REV
B		MPCA0002	6
SCALE SHOWN		SHEET 2 OF 11	



METAL STUD



STEEL TRACK

### STUD FRAMING ELEVATION

3/4" = 1'-0"

THE WOOD BUCK FRAME DETAILED IN THIS DRAWING IS FOR TEST PURPOSES ONLY AND IS NOT INTENDED AS A RECOMMENDATION FOR ACTUAL CONSTRUCTION.

**PTC**  
 PTC PRODUCT DESIGN GROUP, LLC  
 PO BOX 520775  
 LONGWOOD, FLORIDA 32752  
 FBPE C.A. NO. 25935  
 Phone: 321.690.1788, Fax: 321.690.1789  
 Email: info@ptc-corp.com

Kistler McDougall

**MITSUBISHI CHEMICAL COMPOSITES AMERICA, INC.**

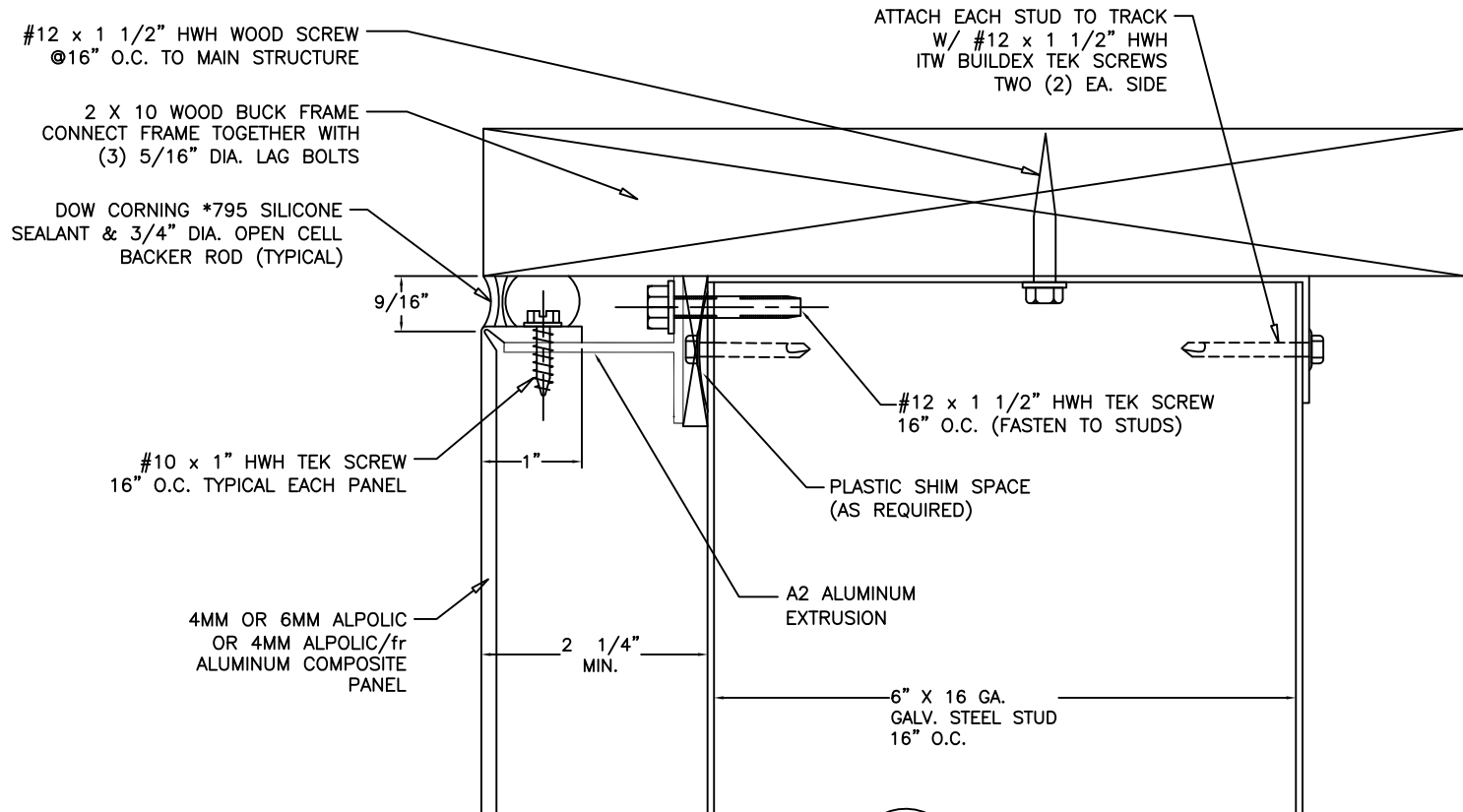
ALPOLIC and ALPOLIC/fr  
 COMPOSITE WALL PANEL SYSTEMS

Robert J. Amoruso, P.E.  
 FL P.E. No. 49752

6	RJA	4/14/17	NAME CHANGE TO MITSUBISHI CHEMICAL COMPOSITES AMERICA
5	RJA	4/24/14	UPDATE TO CURRENT EDITION OF THE FIG
4	RJA	6/10/12	UPDATE TO 2010 FIG
3	TH	1/16/12	MITSUBISHI PLASTICS COMPOSITES WAS MITSUBISHI CHEMICAL
REV.	BY	DATE	CHANGE

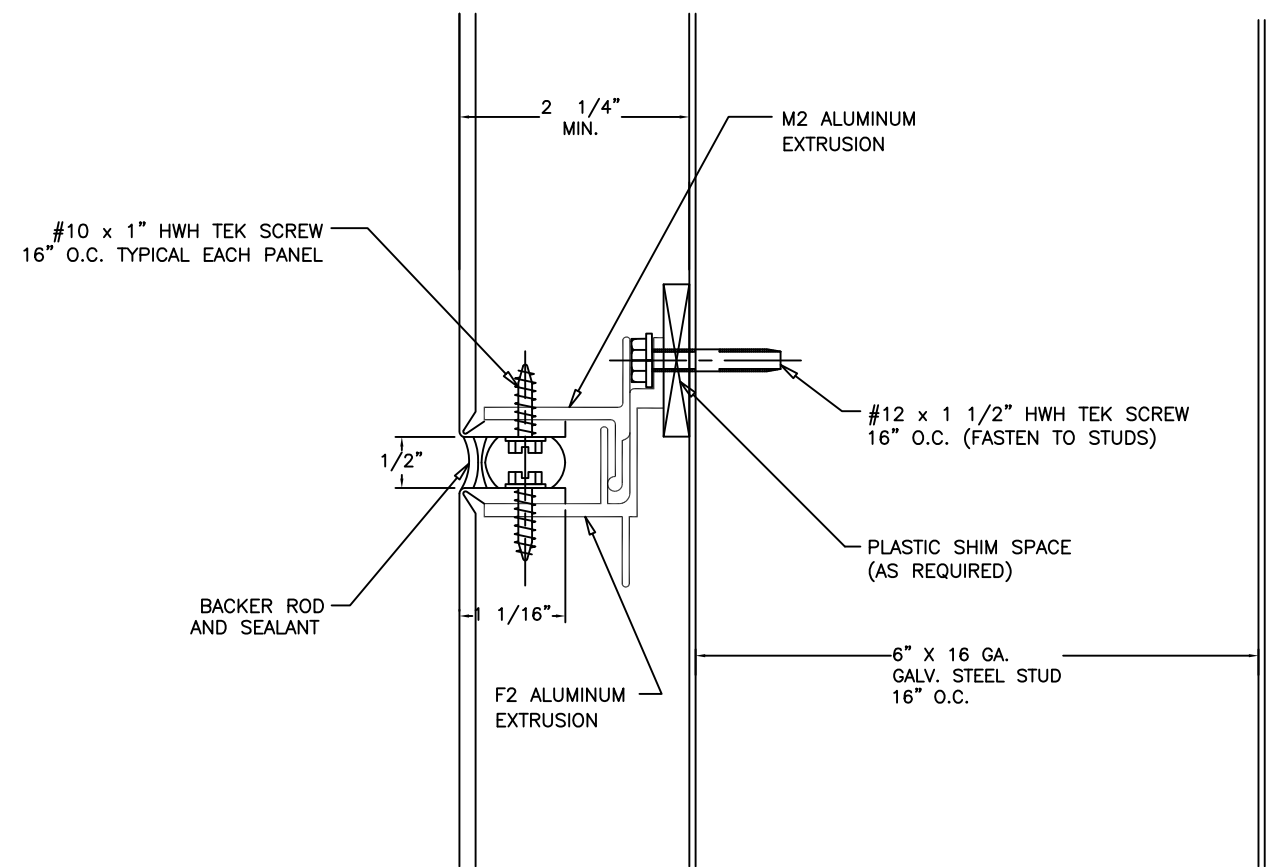
UNLESS OTHERWISE SPECIFIED DIMENSIONS ARE IN INCHES TOLERANCES ARE: FRACTIONS    DECIMALS    ANGLES ± 1/32    .XX ± .01    ± 1/2 .XXX ± .005	CONTRACT NO.	
	APPROVALS	DATE
MATERIAL	DRAWN	
FINISH	ENGINEERING	MS 11/11/02
DO NOT SCALE DRAWING	PROJ MGMT	
	PRODUCTION	

SIZE	CAGE CODE	DWG NO.	REV
B		MPCA0002	6
SCALE SHOWN	SHEET		3 OF 11

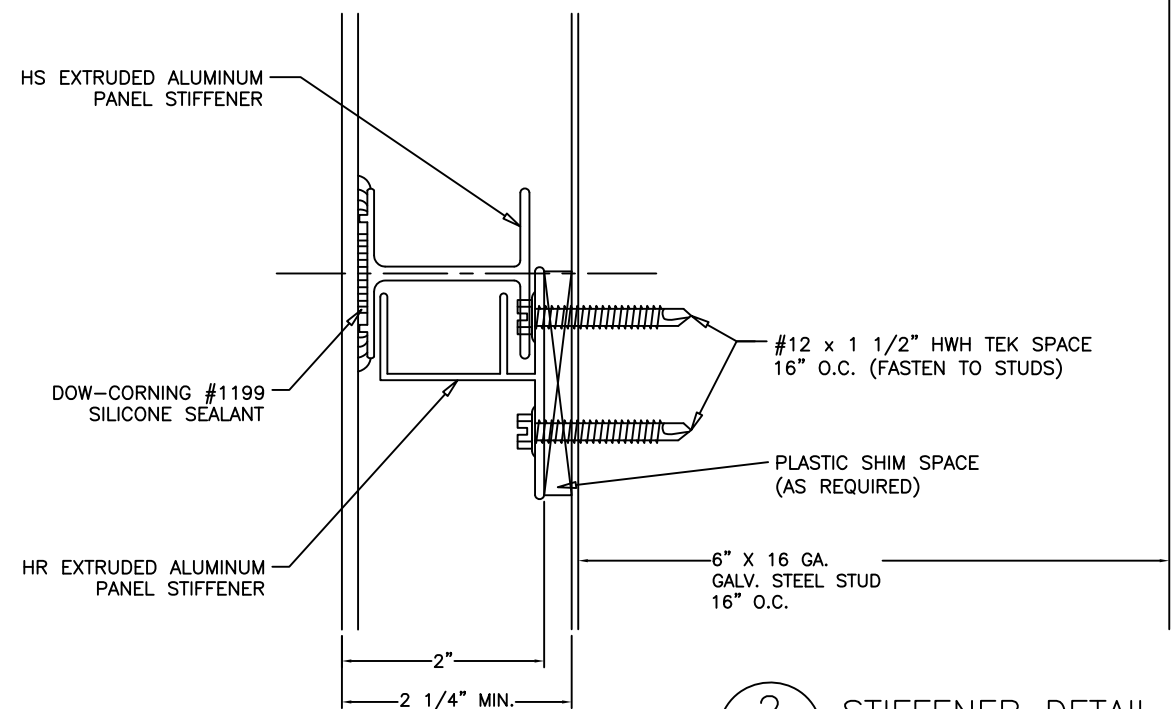


1  
4  
DETAIL  
SCALE: 6" = 1'

THE WOOD BUCK FRAME DETAILED IN THIS DRAWING IS FOR TEST PURPOSES ONLY AND IS NOT INTENDED AS A RECOMMENDATION FOR ACTUAL CONSTRUCTION.



3  
4  
JOINT DETAIL  
SCALE: 6" = 1'



2  
4  
STIFFENER DETAIL  
SCALE: 6" = 1'

Robert J. Amoruso, P.E.  
FL P.E. No. 49752

REV.	BY	DATE	CHANGE
6	RJA	4/14/17	NAME CHANGE TO MITSUBISHI CHEMICAL COMPOSITES AMERICA
5	RJA	4/24/14	UPDATE TO THE CURRENT EDITION OF THE FBC
4	RJA	6/10/12	UPDATE TO 2010 FBC
3	TH	1/09/12	Mitsubishi Chemical Composite use standard chemical
2	TH	6/01/11	ISSUED FOR SIGNATURE BLOCK

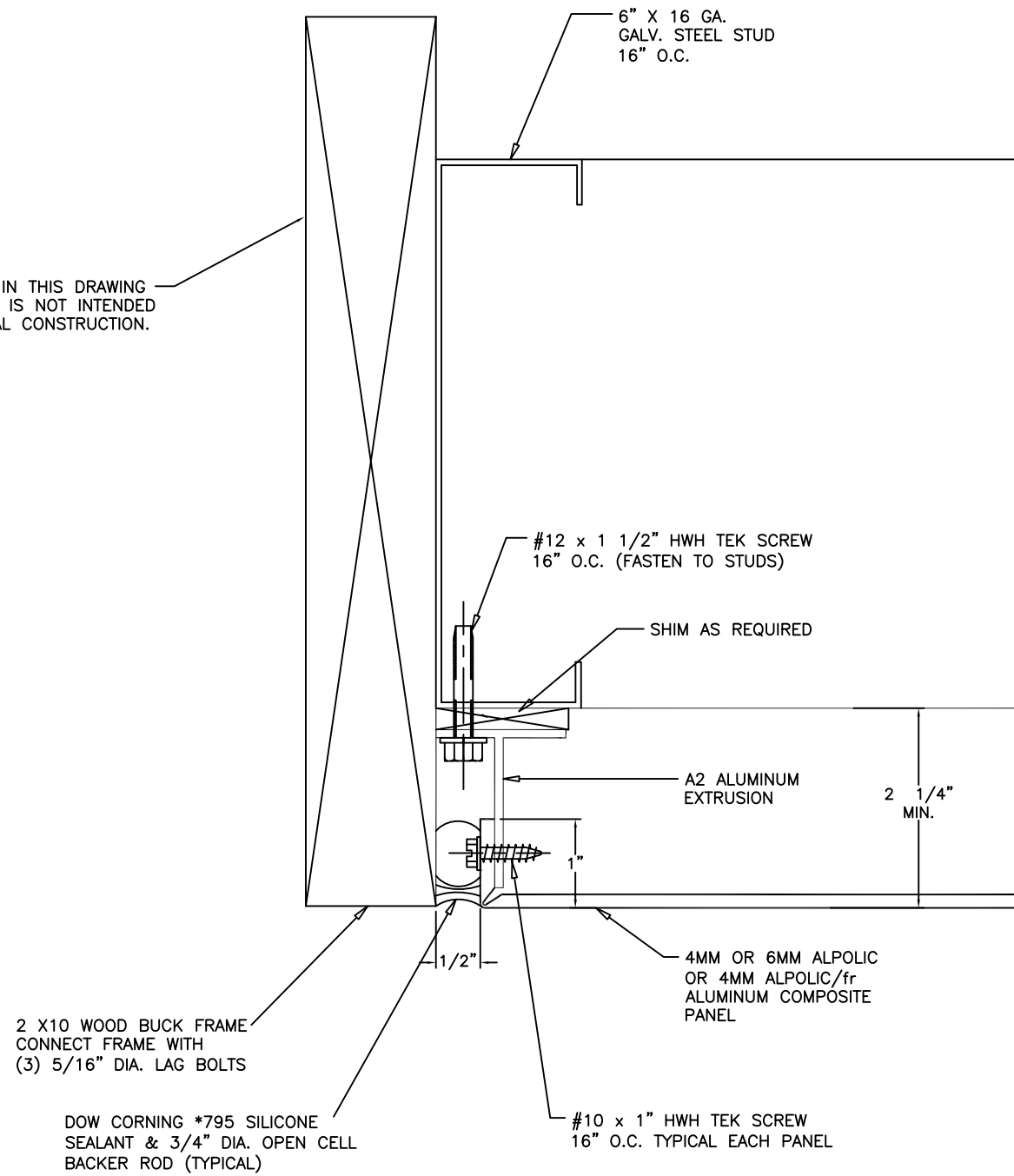
UNLESS OTHERWISE SPECIFIED DIMENSIONS ARE IN INCHES TOLERANCES ARE:			CONTRACT NO.	
FRACTIONS	DECIMALS	ANGLES	APPROVALS	DATE
± 1/32	.XX ± .01	± 1/2		
	.XXX ± .005			
MATERIAL	FINISH		DRAWN	
			ENGINEERING	MS
			PROJ MGMT	11/11/02
DO NOT SCALE DRAWING			PRODUCTION	

**PTC** PTC PRODUCT DESIGN GROUP, LLC  
PO BOX 520775  
LONGWOOD, FLORIDA 32752  
FBPE C.A. NO. 25935  
Phone: 321.690.1788; Fax: 321.690.1789  
Email: info@ptc-corp.com

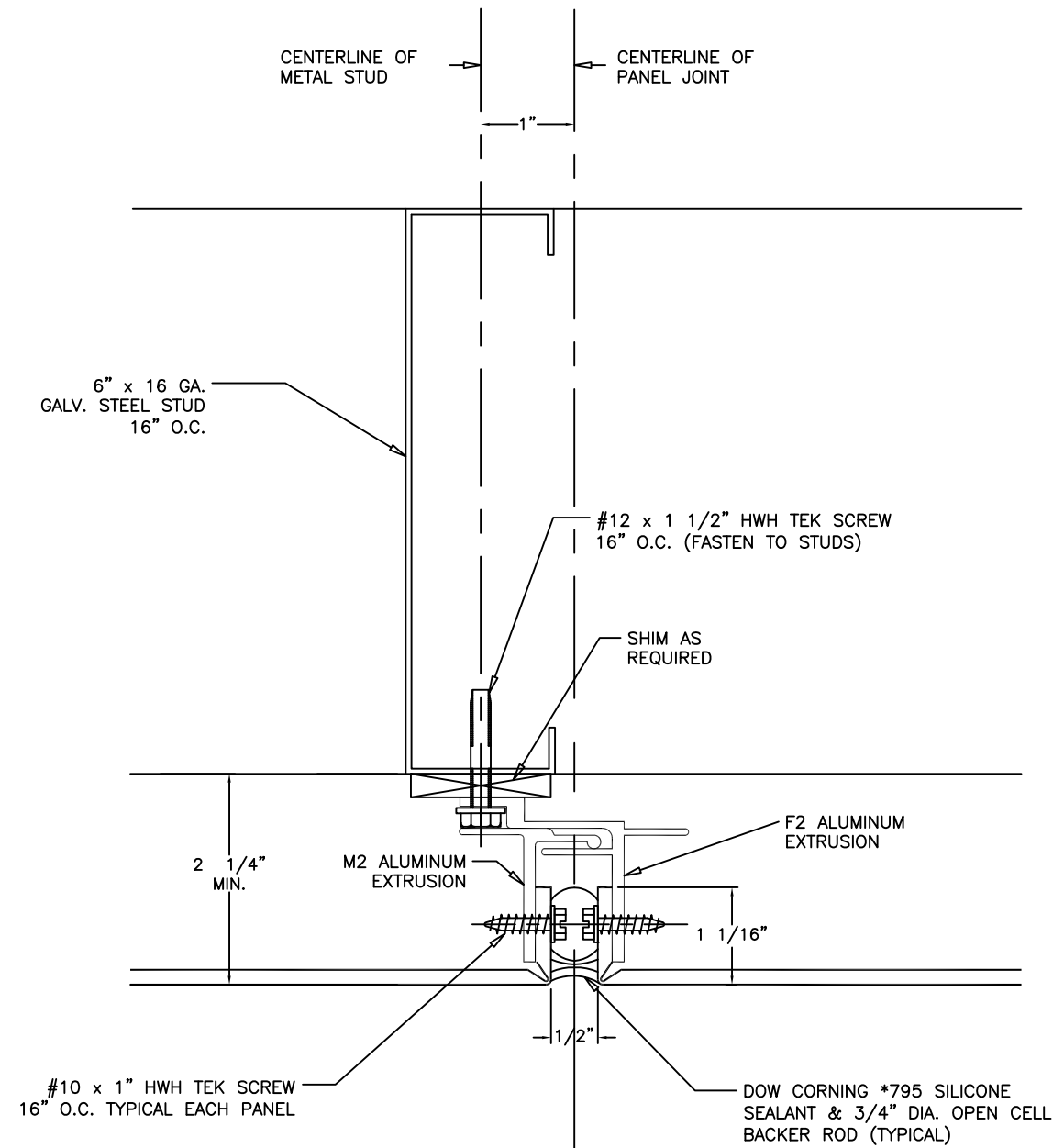
Kistler McDougall  
**MITSUBISHI CHEMICAL COMPOSITES AMERICA, INC.**  
ALPOLIC and ALPOLIC/fr  
COMPOSITE WALL PANEL SYSTEMS

SIZE	CAGE CODE	DWG NO.	REV
B		MPCA0002	6
SCALE SHOWN	SHEET		4 OF 11

THE WOOD BUCK FRAME DETAILED IN THIS DRAWING IS FOR TEST PURPOSES ONLY AND IS NOT INTENDED AS A RECOMMENDATION FOR ACTUAL CONSTRUCTION.



4  
5  
DETAIL  
SCALE: 6" = 1'



5  
5  
DETAIL  
SCALE: 6" = 1'

Robert J. Amoruso, P.E.  
FL P.E. No. 49752

REV.	BY	DATE	CHANGE
6	RJA	4/14/17	NAME CHANGE TO MITSUBISHI CHEMICAL COMPOSITES AMERICA
5	RJA	4/24/14	UPDATE TO CURRENT EDITION OF THE FBC
4	RJA	6/10/12	UPDATE TO 2010 FBC
3	TH	1/16/12	MITSUBISHI PLACED THE MITSUBISHI CHEMICAL
2	TH	9/04/09	ADDED THE SIGNATURE BLOCK

UNLESS OTHERWISE SPECIFIED DIMENSIONS ARE IN INCHES TOLERANCES ARE:			CONTRACT NO.	
FRACTIONS	DECIMALS	ANGLES	APPROVALS	DATE
± 1/32	.XX ± .01	± 1/2		
	.XXX ± .005			
MATERIAL	DRAWN			
FINISH	ENGINEERING MS 11/11/02			
	PROJ MGMT			
	PRODUCTION			
DO NOT SCALE DRAWING				

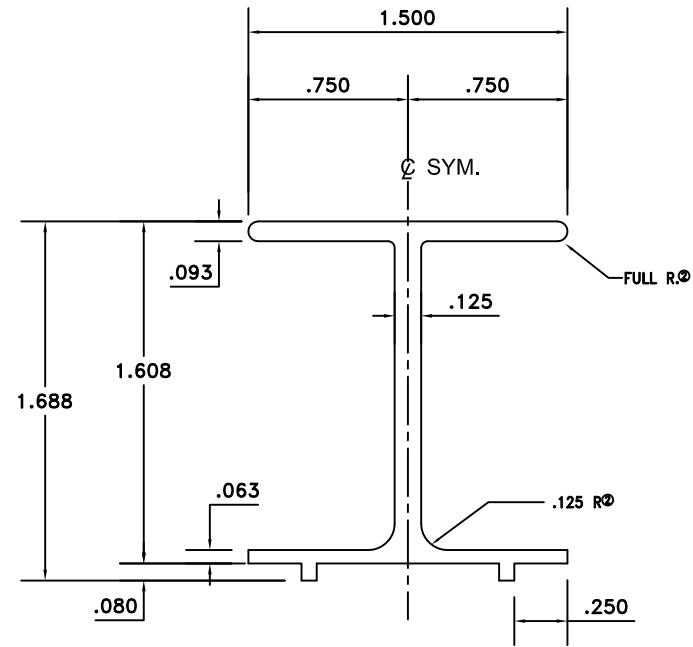
PTC PRODUCT DESIGN GROUP, LLC  
PO BOX 520775  
LONGWOOD, FLORIDA 32752  
FBPE C.A. NO. 25935  
Phone: 321.690.1788, Fax: 321.690.1789  
Email: info@ptc-corp.com

Kistler McDougall  
**MITSUBISHI CHEMICAL COMPOSITES AMERICA, INC.**

ALPOLIC and ALPOLIC/fr  
COMPOSITE WALL PANEL SYSTEMS

SIZE	CAGE CODE	DWG NO.	REV
B		MPCA0002	6
SCALE SHOWN			SHEET 5 OF 11

HS

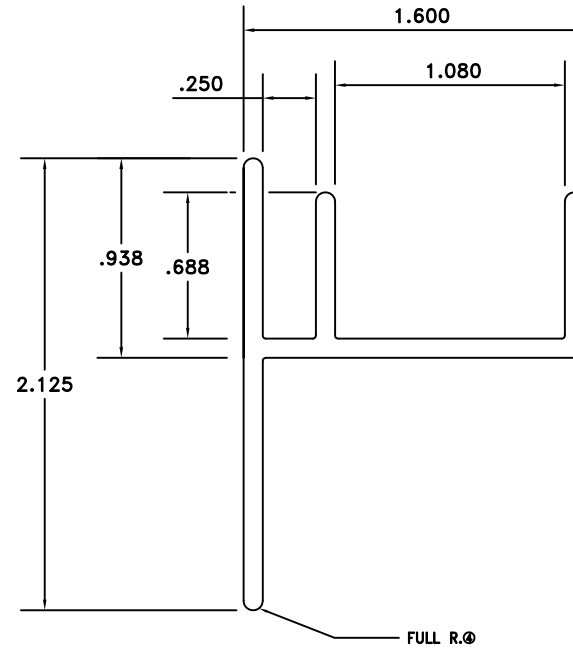


BREAK CORNERS .015 R  
EXCEPT AS NOTED  
ACTUAL SIZE

DIE DATA

EST. AREA: .430      DIE SIZE: 6  
EST. WEIGHT: .516      NO. HOLES: 1  
EST. PERI.:      EXT. LENGTH: 5 1/8" = 1 @ 35'  
FACTOR:      R/R:

HR

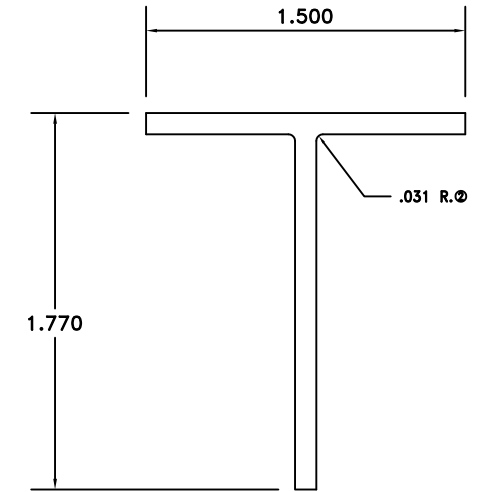


BREAK CORNERS .015 R  
.090 TYPICAL METAL THICKNESS  
ACTUAL SIZE

DIE DATA

EST. AREA: .465      DIE SIZE: 6  
EST. WEIGHT: .558      NO. HOLES: 1  
EST. PERI.:      EXT. LENGTH: 5 1/8 = 1 @ 36'  
FACTOR:      R/R

A2



BREAK CORNERS .010 R  
.100 WALL THICK TYPICAL  
ACTUAL SIZE

DIE DATA

EST. AREA: .317      DIE SIZE: 6  
EST. WEIGHT: .380      NO. HOLES: 1  
EST. PERI.: 6.54      EXT. LENGTH:  
FACTOR: 17      R/R: 5 1/8 = 1 @ 53'

Robert J. Amoruso, P.E.  
FL P.E. No. 49752

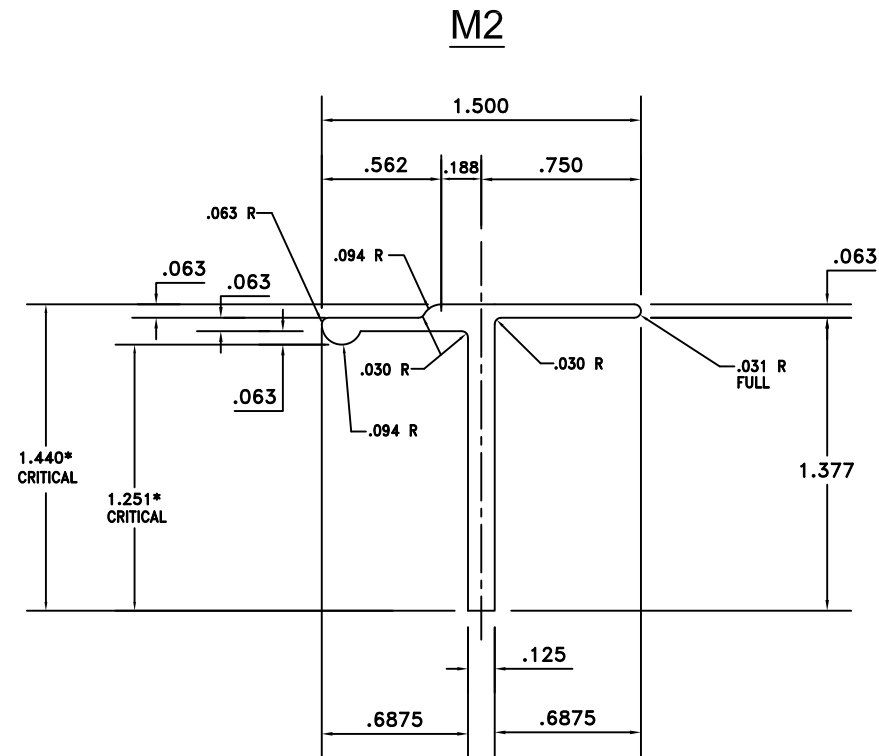
6	RJA	4/14/17	NAME CHANGE TO MITSUBISHI CHEMICAL COMPOSITES AMERICA
5	RJA	4/24/14	UPDATE TO THE CURRENT EDITION OF THE FIC
4	RJA	6/10/12	UPDATE TO 2010 FIC
3	TH	9/04/09	MITSUBISHI PLASTICS WAS MITSUBISHI CHEMICAL
2	TH	6/01/11	REMOVED PE SIGNATURE BLOCK
REV.	BY	DATE	CHANGE

UNLESS OTHERWISE SPECIFIED DIMENSIONS ARE IN INCHES TOLERANCES ARE:		
FRACTIONS	DECIMALS	ANGLES
± 1/32	.XX ± .01	± 1/2
	.XXX ± .005	
MATERIAL	CONTRACT NO.	
FINISH	APPROVALS	DATE
	DRAWN	
	ENGINEERING	MS 11/11/02
	PROJ MGMT	
	PRODUCTION	
DO NOT SCALE DRAWING		

**PTC** PTC PRODUCT DESIGN GROUP, LLC  
PO BOX 520775  
LONGWOOD, FLORIDA 32752  
FBPE C.A. NO. 25935  
Phone: 321.690.1788, Fax: 321.690.1789  
Email: info@ptc-corp.com

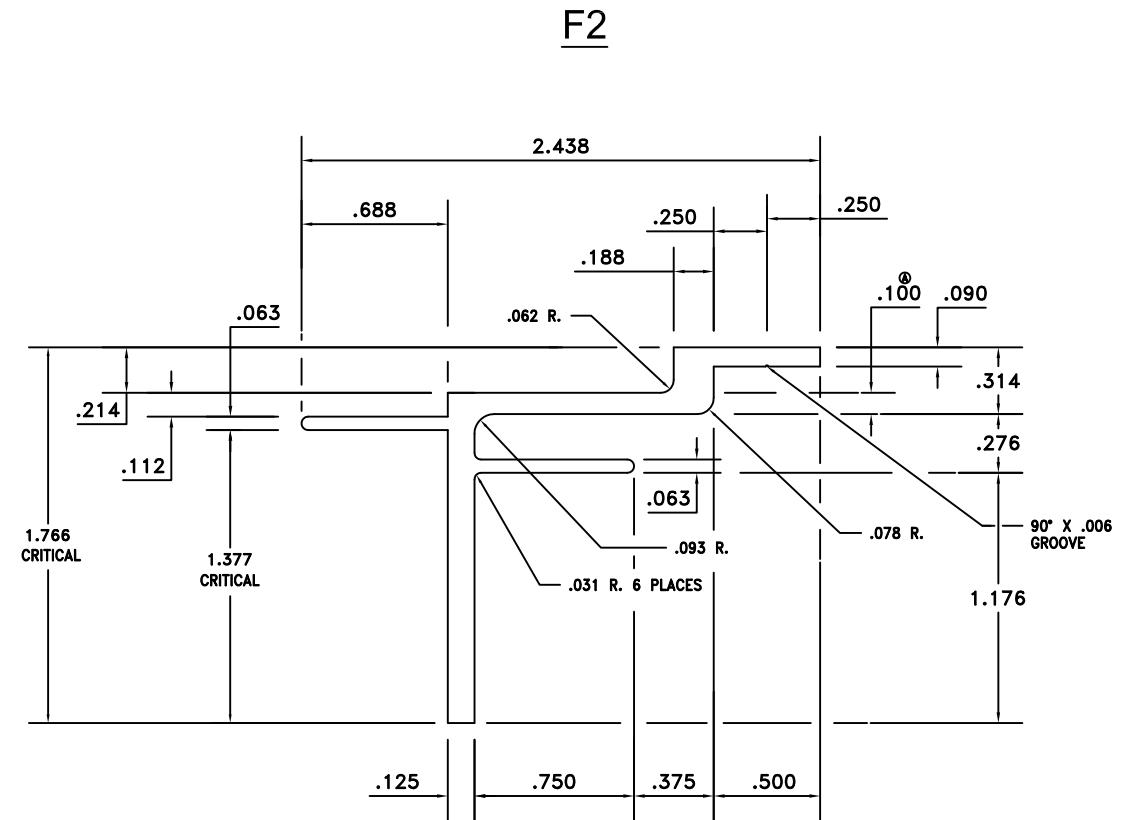
Kistler McDougall  
**MITSUBISHI CHEMICAL COMPOSITES AMERICA, INC.**  
ALPOLIC and ALPOLIC/fr  
COMPOSITE WALL PANEL SYSTEMS

SIZE	CAGE CODE	DWG NO.	REV
B		MPCA0002	6
SCALE SHOWN	SHEET 6 OF 11		



ACTUAL SIZE  
BREAK SHARP CORNERS .005 R

**DIE DATA**  
 EST. AREA: .275      DIE SIZE: 6  
 EST. WEIGHT: .330      NO. HOLES: 1  
 EST. PERI.: 5.831      EXT. LENGTH: 4 1/2 = 1- 46'  
 FACTOR: 18      R/R: 5 1/8" = 1- 62'



ACTUAL SIZE  
BREAK SHARP CORNERS .010R

**DIE DATA**  
 EST. AREA: .484      DIE SIZE: 6  
 EST. WEIGHT: .581      NO. HOLES: 1  
 EST. PERI.: 9.900      EXT. LENGTH: 5 1/8 = 1@34'  
 FACTOR: 17      R/R

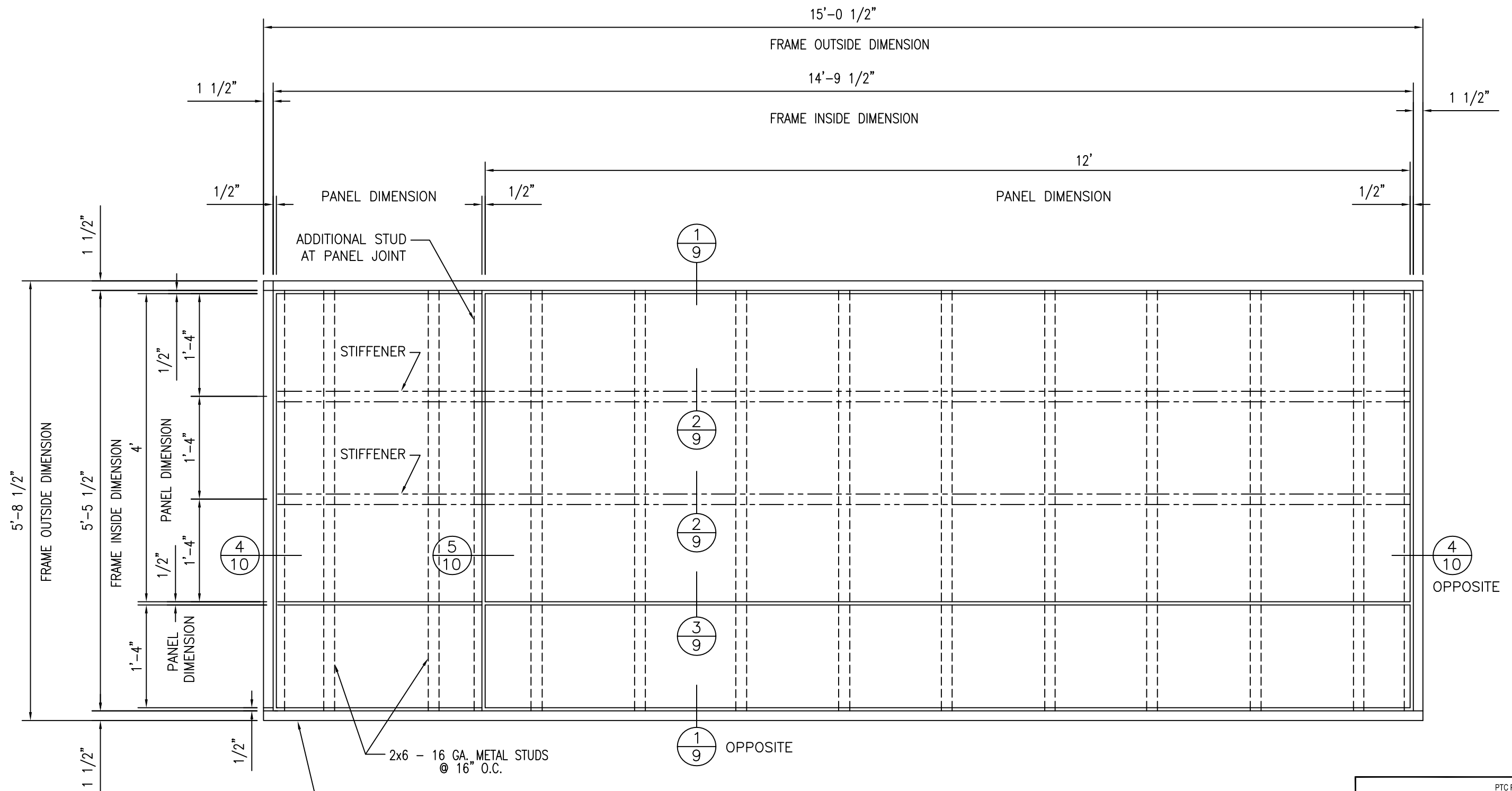
Robert J. Amoruso, P.E.  
FL P.E. No. 49752

6	RJA	4/14/17	NAME CHANGE TO MITSUBISHI CHEMICAL COMPOSITES AMERICA
5	RJA	4/24/14	UPDATE TO THE CURRENT EDITION OF THE FIC
3	RJA	6/10/12	UPDATE TO 2004 FIC
2	TH	1/16/12	MITSUBISHI PLASTICS WAS MITSUBISHI CHEMICAL
1	TH	9/04/09	ADDED PE SIGNATURE BLOCK

UNLESS OTHERWISE SPECIFIED DIMENSIONS ARE IN INCHES TOLERANCES ARE: FRACTIONS    DECIMALS    ANGLES ± 1/32    .XX ± .01    ± 1/2 .XXX ± .005			CONTRACT NO.	
MATERIAL			APPROVALS	DATE
FINISH			ENGINEERING	MS    11/11/02
DO NOT SCALE DRAWING			PROJ MGMT	
			PRODUCTION	
SIZE	CAGE CODE	DWG NO.	REV	
B		MPCA0002	6	
SCALE SHOWN			SHEET 7 OF 11	

**PTC**  
 PTC PRODUCT DESIGN GROUP, LLC  
 PO BOX 520775  
 LONGWOOD, FLORIDA 32752  
 FBPE C.A. NO. 25935  
 Phone: 321.690.1788, Fax: 321.690.1789  
 Email: info@ptc-corp.com

**Kistler McDougall**  
**MITSUBISHI CHEMICAL COMPOSITES AMERICA, INC.**  
 ALPOLIC and ALPOLIC/fr  
 COMPOSITE WALL PANEL SYSTEMS



THE WOOD BUCK FRAME DETAILED IN THIS DRAWING IS FOR TEST PURPOSES ONLY AND IS NOT INTENDED AS A RECOMMENDATION FOR ACTUAL CONSTRUCTION.

### PANEL ELEVATION

3/4" = 1'-0"

Robert J. Amoruso, P.E.  
FL P.E. No. 49752

6	RJA	4/14/17	NAME CHANGE TO MITSUBISHI CHEMICAL COMPOSITES AMERICA
5	RJA	4/24/14	UPDATE TO THE CURRENT EDITION OF THE FBC
4	RJA	6/10/12	UPDATE TO 2010 FBC
3	TH	1/16/12	MITSUBISHI PLASTICS AND MITSUBISHI CHEMICAL
2	TH	9/04/09	ADDED FE SIGNATURE BLOCK
REV.	BY	DATE	CHANGE

UNLESS OTHERWISE SPECIFIED DIMENSIONS ARE IN INCHES TOLERANCES ARE:			CONTRACT NO.	
FRACTIONS	DECIMALS	ANGLES	APPROVALS	DATE
± 1/32	.XX ± .01	± 1/2		11/11/02
	.XXX ± .005			
MATERIAL	DRAWN			
FINISH	ENGINEERING MS			
	PROJ MGMT			
	PRODUCTION			
DO NOT SCALE DRAWING				

PTC PRODUCT DESIGN GROUP, LLC  
PO BOX 520775  
LONGWOOD, FLORIDA 32752  
FBPE C.A. NO. 25935  
Phone: 321.690.1788, Fax: 321.690.1789  
Email: info@ptc-corp.com

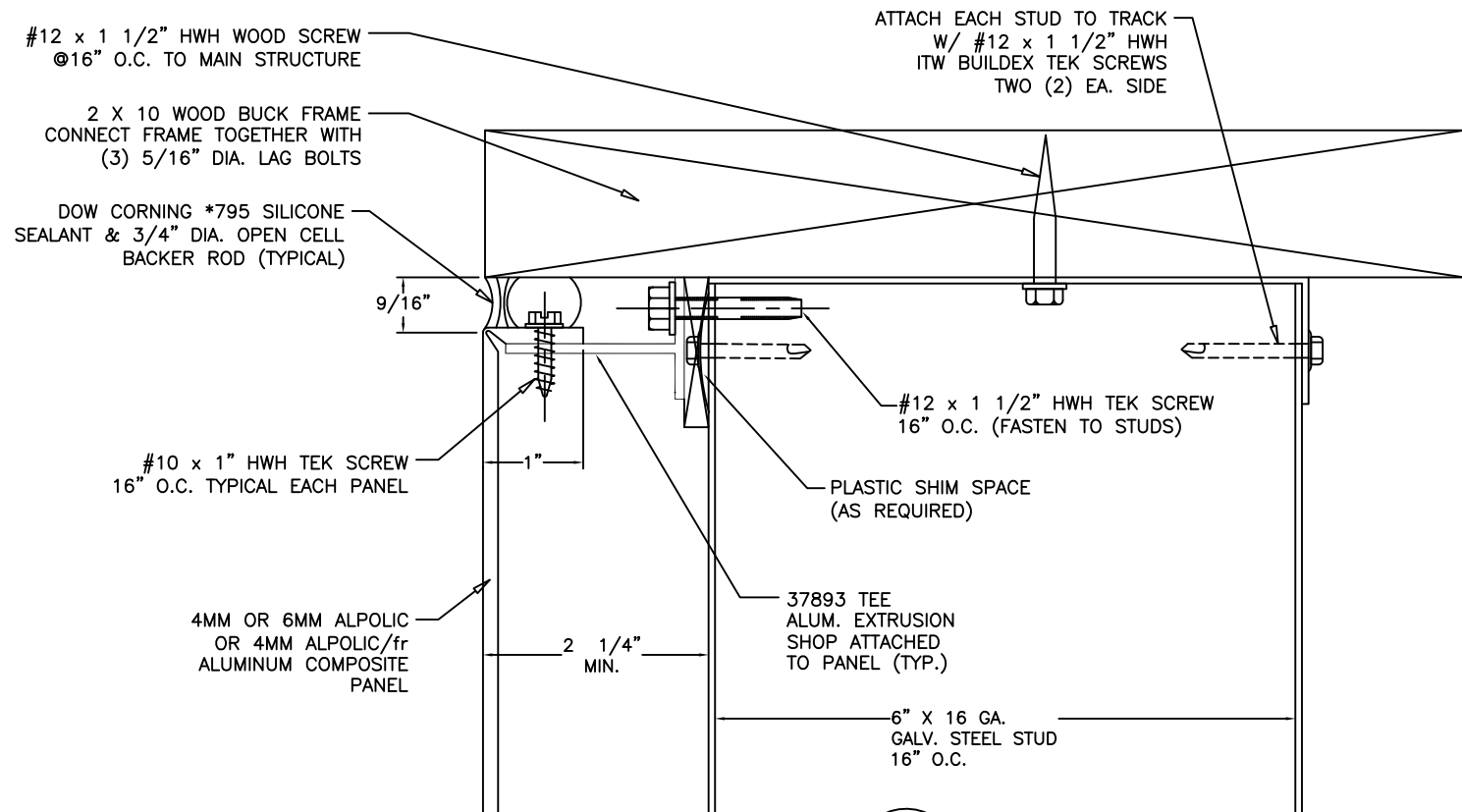
**SAF METAL FABRICATION**

**MITSUBISHI CHEMICAL COMPOSITES AMERICA, INC.**

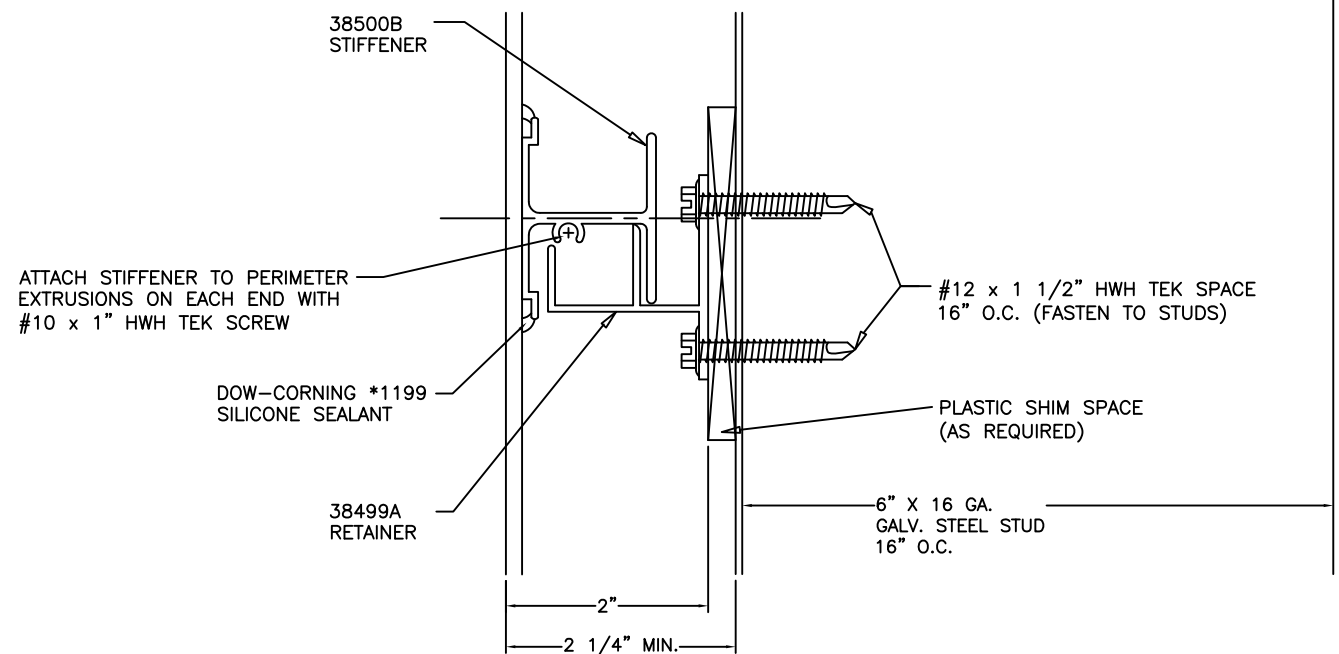
**ALPOLIC and ALPOLIC/fr COMPOSITE WALL PANEL SYSTEMS**

SIZE	CAGE CODE	DWG NO.	REV
B		MPCA0002	6
SCALE SHOWN	SHEET		8 OF 11



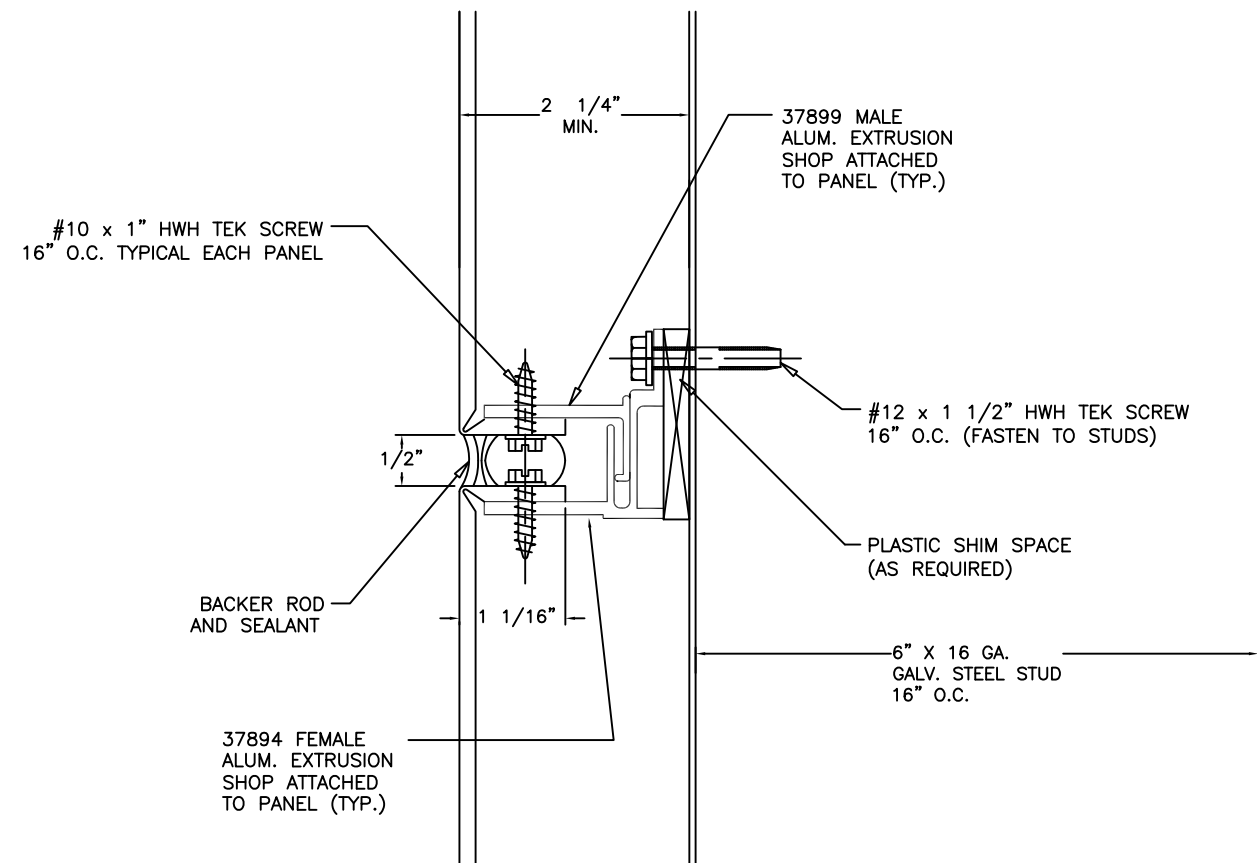


1  
9  
DETAIL  
SCALE: 6" = 1'



2  
9  
STIFFENER DETAIL  
SCALE: 6" = 1'

THE WOOD BUCK FRAME DETAILED IN THIS DRAWING IS FOR TEST PURPOSES ONLY AND IS NOT INTENDED AS A RECOMMENDATION FOR ACTUAL CONSTRUCTION.



3  
9  
JOINT DETAIL  
SCALE: 6" = 1'

Robert J. Amoruso, P.E.  
FL P.E. No. 49752

REV.	BY	DATE	CHANGE
6	RJA	4/14/17	ISSUE CHANGE TO MITSUBISHI CHEMICAL COMPOSITES AMERICA
5	RJA	4/24/14	UPDATE TO THE CURRENT EDITION OF THE FBC
4	RJA	6/10/12	UPDATE TO 2010 FBC
3	TH	1/16/12	REVISIONS PLASTIC SHIM WITH MITSUBISHI CHEMICAL
2	TH	9/04/09	ADD IN SIGNATURE BLOCK

UNLESS OTHERWISE SPECIFIED DIMENSIONS ARE IN INCHES TOLERANCES ARE:		
FRACTIONS	DECIMALS	ANGLES
± 1/32	.XX ± .01	± 1/2
	.XXX ± .005	

CONTRACT NO.	
APPROVALS	DATE
DRAWN	
ENGINEERING	MS 11/11/02
PROJ MGMT	
PRODUCTION	

PTC PRODUCT DESIGN GROUP, LLC  
PO BOX 520775  
LONGWOOD, FLORIDA 32752  
FBPE C.A. NO. 25935  
Phone: 321.690.1788, Fax: 321.690.1789  
Email: info@ptc-corp.com

**PTC**

SAF METAL FABRICATION  
**MITSUBISHI CHEMICAL COMPOSITES AMERICA, INC.**

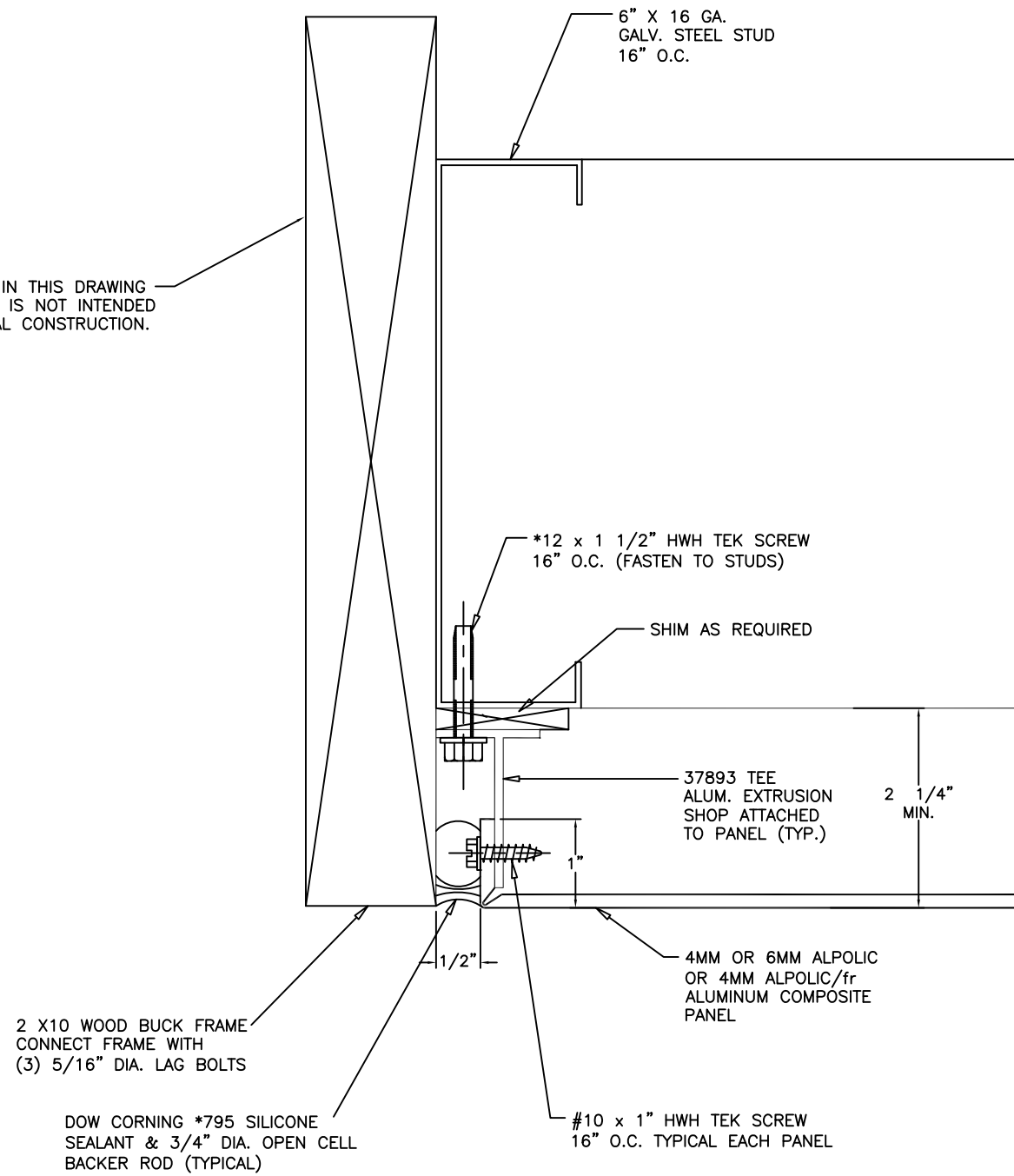
ALPOLIC and ALPOLIC/fr  
COMPOSITE WALL PANEL SYSTEMS

SIZE	CAGE CODE	DWG NO.	REV
B		MPCA0002	6

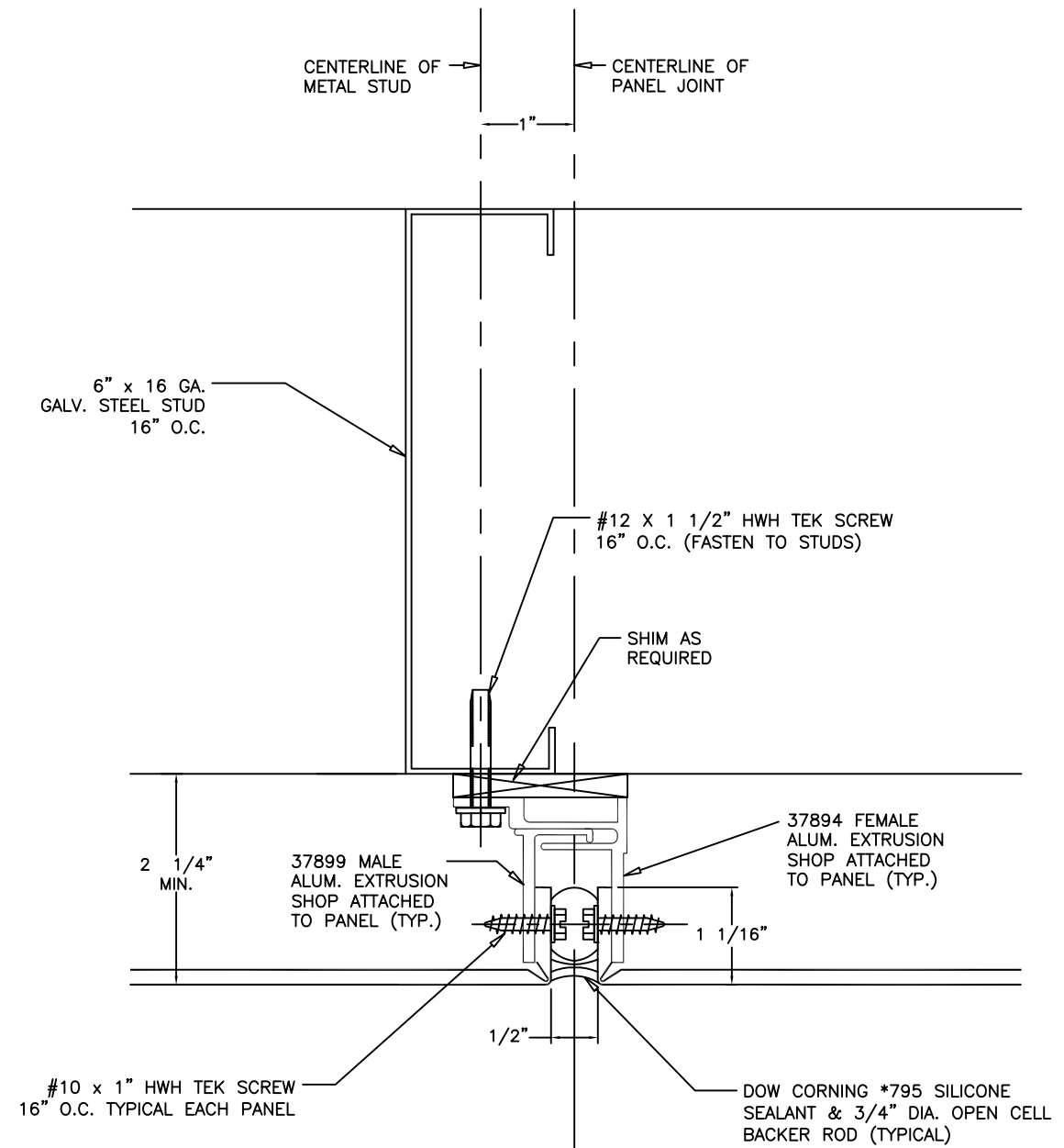
SCALE SHOWN SHEET 9 OF 11

DO NOT SCALE DRAWING

THE WOOD BUCK FRAME DETAILED IN THIS DRAWING IS FOR TEST PURPOSES ONLY AND IS NOT INTENDED AS A RECOMMENDATION FOR ACTUAL CONSTRUCTION.



4  
10  
DETAIL  
SCALE: 6" = 1'



5  
10  
DETAIL  
SCALE: 6" = 1'

Robert J. Amoruso, P.E.  
FL P.E. No. 49752

REV.	BY	DATE	CHANGE
6	RJA	4/14/17	NAME CHANGE TO MITSUBISHI CHEMICAL COMPOSITES AMERICA
5	RJA	4/24/14	UPDATE TO THE CURRENT EDITION OF THE FBC
4	RJA	6/10/12	UPDATE TO 2010 FBC
3	TH	1/16/12	MITSUBISHI PLASTIC THE MITSUBISHI CHEMICAL
2	TH	9/04/09	ADDED P.E. SIGNATURE BLOCK

UNLESS OTHERWISE SPECIFIED DIMENSIONS ARE IN INCHES TOLERANCES ARE:		
FRACTIONS ± 1/32	DECIMALS .XX ± .01 .XXX ± .005	ANGLES ± 1/2
MATERIAL	CONTRACT NO.	
FINISH	APPROVALS	DATE
	DRAWN	
	ENGINEERING	MS 11/11/02
	PROJ MGMT	
	PRODUCTION	
DO NOT SCALE DRAWING		

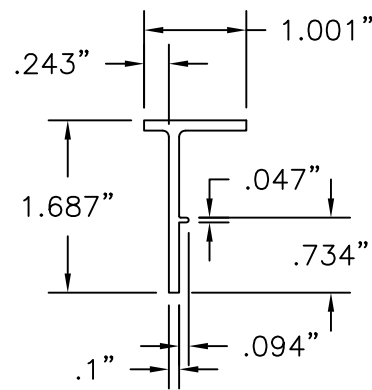
APPROVALS	DATE
DRAWN	
ENGINEERING	MS 11/11/02
PROJ MGMT	
PRODUCTION	

PTC PRODUCT DESIGN GROUP, LLC  
PO BOX 520775  
LONGWOOD, FLORIDA 32752  
FBPE C.A. NO. 25935  
Phone: 321.690.1788, Fax: 321.690.1789  
Email: Info@ptc-corp.com

SAF METAL FABRICATION  
**MITSUBISHI CHEMICAL COMPOSITES AMERICA, INC.**

ALPOLIC and ALPOLIC/fr  
COMPOSITE WALL PANEL SYSTEMS

SIZE	CAGE CODE	DWG NO.	REV
B		MPCA0002	6
SCALE SHOWN			SHEET 10 OF 11

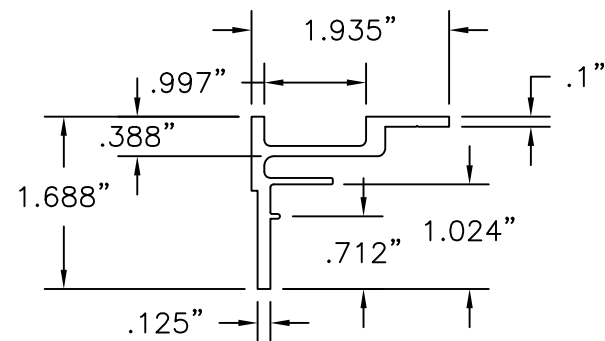


**ACM TERMINATOR**

EXTRUDED ALUMINUM 6063-T6

Die Data: #SAF-37893

Area = .265  
 Wt./Ft. = .318  
 Perim. = 5.483  
 Circle Size = 0-3  
 lx = .078, ly = .011  
 Sx = .070, Sy = .018  
 Cgy = 1.116, Cgx = .628

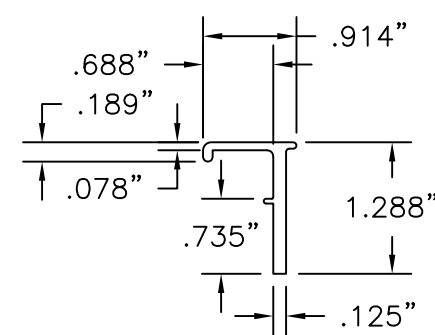


**ACM FEMALE**

EXTRUDED ALUMINUM 6063-T6

Die Data: #SAF-37894

Area = .499  
 Wt./Ft. = .599  
 Perim. = 9.154  
 Circle Size = 0-3  
 lx = .100, ly = .161  
 Sx = .086, Sy = .120  
 Cgy = 1.160, Cgx = 1.348

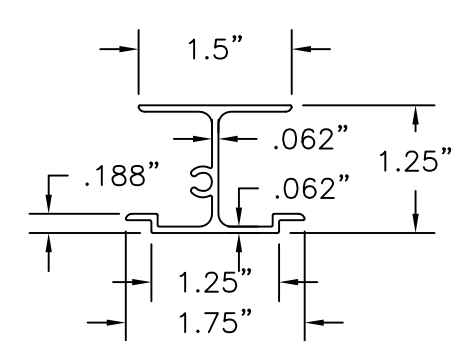


**ACM MALE**

EXTRUDED ALUMINUM 6063-T6

Die Data: #SAF-37899

Area = .234  
 Wt./Ft. = .281  
 Perim. = 4.646  
 Circle Size = 0-3  
 lx = .039, ly = .012  
 Sx = .048, Sy = .019  
 Cgy = .819, Cgx = .633

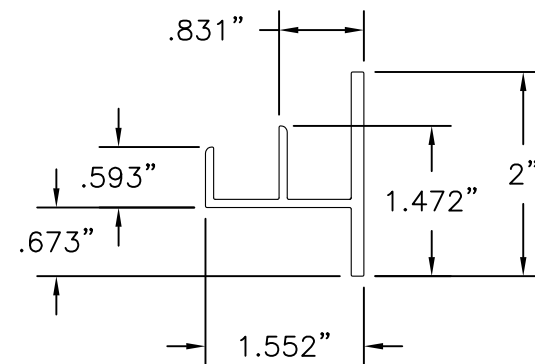


**PANEL STIFFENER**

EXTRUDED ALUMINUM 6063-T6

Die Data: #SAF-38500B

Area = .325  
 Wt./Ft. = .390  
 Perim. = 9.749  
 Circle Size = 0-3  
 lx = .081, ly = .049  
 Sx = .120, Sy = .056  
 Cgy = .676, Cgx = .886



**RETAINER**

EXTRUDED ALUMINUM 6063-T6

Die Data: #SAF-38499A

Area = .4610  
 Wt./Ft. = .542  
 Perim. = 9.4387  
 Circle Size = 0-3  
 lx = .095, ly = .1262  
 Sx = .09, Sy = .117

Robert J. Amoruso, P.E.  
 FL P.E. No. 49752

REV.	BY	DATE	CHANGE
6	RJA	4/14/17	NAME CHANGE TO MITSUBISHI CHEMICAL COMPOSITES AMERICA
5	RJA	4/24/14	UPDATE TO CURRENT EDITION OF THE FBC
1	RJA	6/10/12	UPDATE TO 2010 REG. SHEET ADDED FOR SAF EXTERIOR

UNLESS OTHERWISE SPECIFIED DIMENSIONS ARE IN INCHES TOLERANCES ARE:		
FRACTIONS	DECIMALS	ANGLES
± 1/32	.XX ± .01	± 1/2
	.XXX ± .005	
MATERIAL 4MM & 6MM ALPOLIC & 4MM ALPOLIC/fr		
FINISH		
DO NOT SCALE DRAWING		

CONTRACT NO.	
APPROVALS	DATE
DRAWN	
ENGINEERING	MS 11/11/02
PROJ MGMT	
PRODUCTION	

PTC PRODUCT DESIGN GROUP, LLC  
 PO BOX 520775  
 LONGWOOD, FLORIDA 32752  
 FBPE C.A. NO. 25935  
 Phone: 321.690.1788, Fax: 321.690.1789  
 Email: info@ptc-corp.com

**PTC**

SAF METAL FABRICATION

**MITSUBISHI CHEMICAL COMPOSITES AMERICA, INC.**

ALPOLIC and ALPOLIC/fr  
 COMPOSITE WALL PANEL SYSTEMS

SIZE	CAGE CODE	DWG NO.	REV
B		MPCA0002	6
SCALE SHOWN		SHEET 11 OF 11	