



**BUILDING CODE COMPLIANCE OFFICE (BCCO)
PRODUCT CONTROL DIVISION**

**MIAMI-DADE COUNTY, FLORIDA
METRO-DADE FLAGLER BUILDING
140 WEST FLAGLER STREET, SUITE 1603
MIAMI, FLORIDA 33130-1563
(305) 375-2901 FAX (305) 375-2908**

NOTICE OF ACCEPTANCE (NOA)

**Alpine Overhead Doors, Inc.
8 Hulse Road
East Setauket, NY 11733**

Scope. This NOA is being issued under the applicable rules and regulations governing the use of construction materials. The documentation submitted has been reviewed by Miami-Dade County Product Control Division and accepted by the Board of Rules and Appeals (BORA) to be used in Miami Dade County and other areas where allowed by the Authority Having Jurisdiction (AHJ).

This NOA shall not be valid after the expiration date stated below. The Miami-Dade County Product Control Division (In Miami Dade County) and/or the AHJ (in areas other than Miami Dade County) reserve the right to have this product or material tested for quality assurance purposes. If this product or material fails to perform in the accepted manner, the manufacturer will incur the expense of such testing and the AHJ may immediately revoke, modify, or suspend the use of such product or material within their jurisdiction. BORA reserves the right to revoke this acceptance, if it is determined by Miami-Dade County Product Control Division that this product or material fails to meet the requirements of the applicable building code.

This product is approved as described herein, and has been designed to comply with the Florida building Code including the High Velocity Hurricane Zone.

DESCRIPTION: 20' Wide Roll-Up Door

APPROVAL DOCUMENT: Drawing No. ALP1, dated 04/24/95, with last revision on 04/25/06, titled "REDISTORM20", sheets 1 through 3 of 3, prepared by Alpine Overhead Doors, Inc. signed and sealed by F. P. Degiovanni PE, bearing the Miami-Dade County Product Control Revision stamp with the Notice of Acceptance number and expiration date by the Miami-Dade County Product Control Division.

MISSILE IMPACT RATING: Large and Small Missile Impact

LABELING: Each unit shall bear a permanent label with the manufacturer's name or logo, city, state and following statement: "Miami-Dade County Product Control Approved or MDCPCA", unless otherwise noted herein.

RENEWAL of this NOA shall be considered after a renewal application has been filed and there has been no change in the applicable building code negatively affecting the performance of this product.

TERMINATION of this NOA will occur after the expiration date or if there has been a revision or change in the materials, use, and/or manufacture of the product or process. Misuse of this NOA as an endorsement of any product, for sales, advertising or any other purposes shall automatically terminate this NOA. Failure to comply with any section of this NOA shall be cause for termination and removal of NOA.

ADVERTISEMENT: The NOA number preceded by the words Miami-Dade County, Florida, and followed by the expiration date may be displayed in advertising literature. If any portion of the NOA is displayed, then it shall be done in its entirety.

INSPECTION: A copy of this entire NOA shall be provided to the user by the manufacturer or its distributors and shall be available for inspection at the job site at the request of the Building Official.

This NOA revises NOA # 01-0821.08 and, consists of this page, evidence page as well as approval document mentioned above.

The submitted documentation was reviewed by **Candido F. Font PE.**



[Signature]
06/29/06

**NOA No 05-1129.02
Expiration Date: December 07, 2006
Approval Date: June 29, 2006**

Alpine Overhead Doors, Inc.

NOTICE OF ACCEPTANCE: EVIDENCE PAGE

A DRAWINGS:

1. Drawing prepared by Alpine Overhead Doors, Inc., Drawing No. ALP1 sheets 1 through 3 of 3, dated 04/24/95 with latest revision on 04/25/06, signed and sealed by F.P. Degiovanni PE.

B TEST:

1. Test report on Large Missile Impact Test, Cyclic Wind Pressure Test and Uniform Static Air Pressure Test on a "Steel Rolling Garage Door", prepared by Architectural Testing Inc., report # ATI-14980, dated 05/10/95, signed and sealed by A. N. Reeves PE.
2. Test report on Large Missile Impact Test, Cyclic Wind Pressure Test on a "Steel Rolling Garage Door", prepared by Architectural Testing Inc., report # 01-31479.01, dated 10/22/98, signed and sealed by A. N. Reeves PE.

C CALCULATIONS:

1. Calculations for the Attachment of Guide Angles to Wall or Jamb, dated 08/29/95, pages ALP-ADEM-1 through ALP-ADEM -4, (For deflection, F mount, Z mount and E mount), signed and sealed by F. Costanzo PE.
2. Revision 1, changed dimension G from 1-3/8" to 1-5/8", dated 08/29/95, pages ALP-ADEM-3, signed and sealed by F. Costanzo. PE.
3. Calculations for the attachment of guide angles to wall or jamb, dated 11/07/05, pages 1 through 5, signed and sealed by F.P. Degiovanni PE.

D QUALITY ASSURANCE:

1. Building Code Compliance Office.

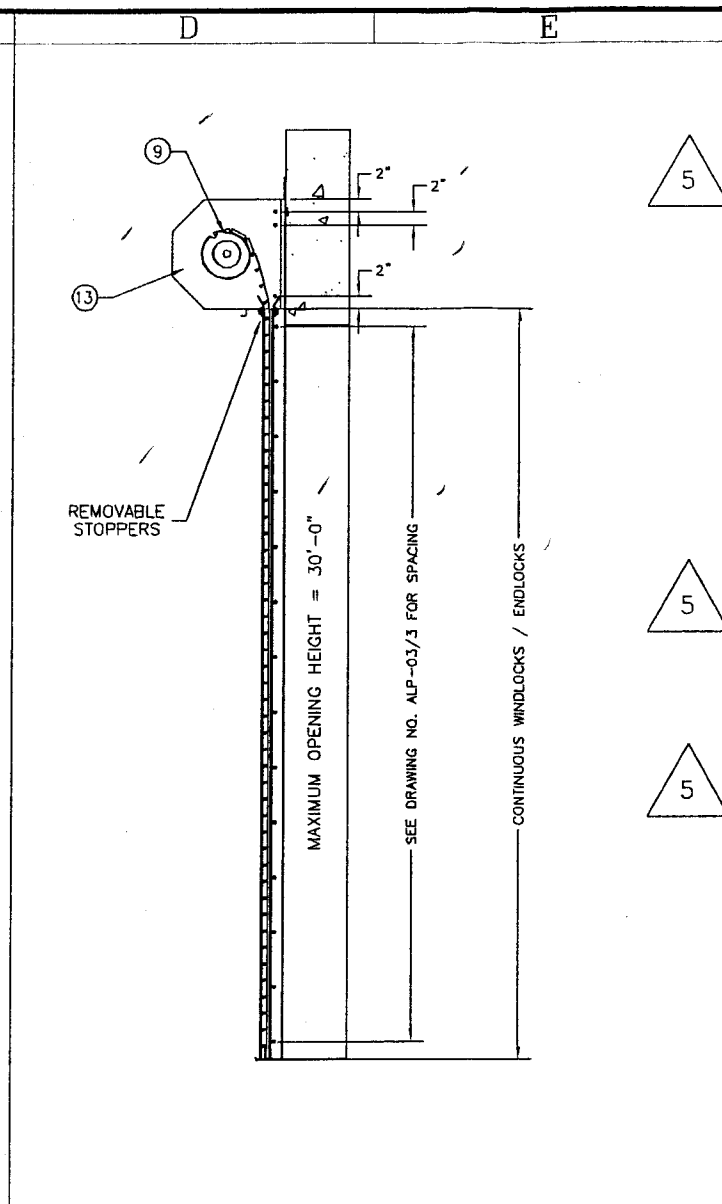
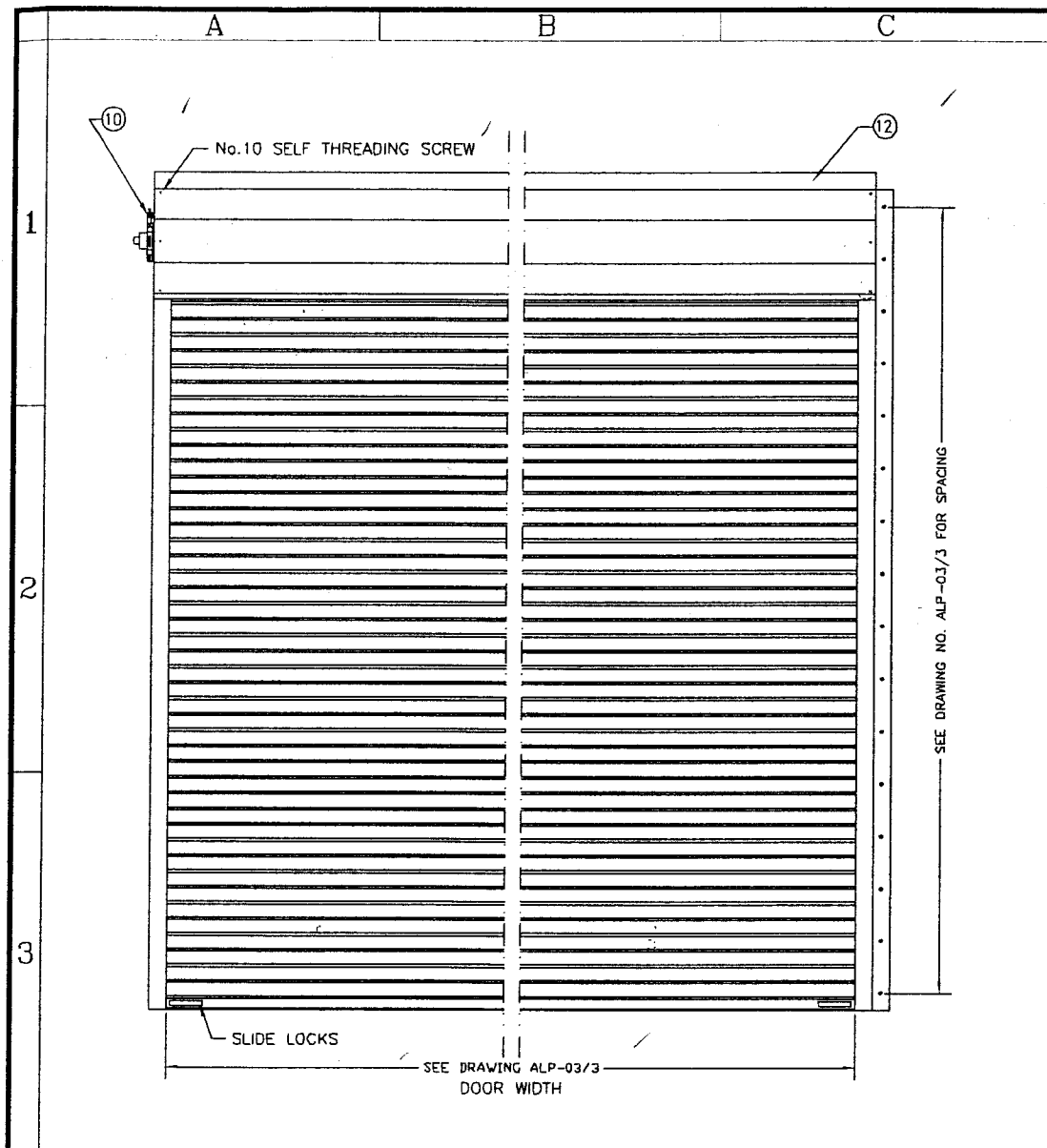
E STATEMENTS:

1. Test Compliance letter issued by Architectural Testing, Inc. on 10/26/98, signed and sealed by A. N. Reeves.
2. No Change letter issued by Alpine Overhead Doors, Inc on 06/15/01 and signed by S. Magro.



06/29/06

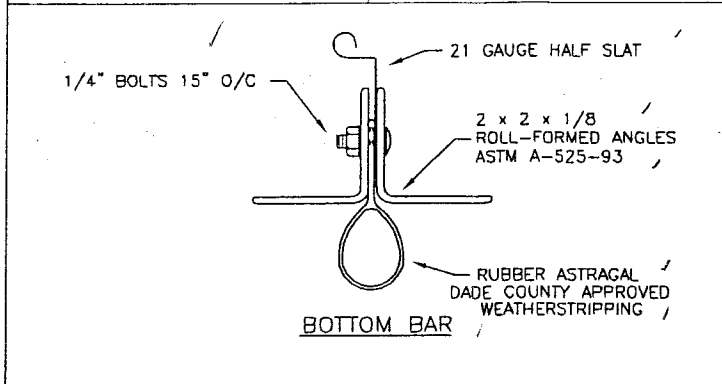
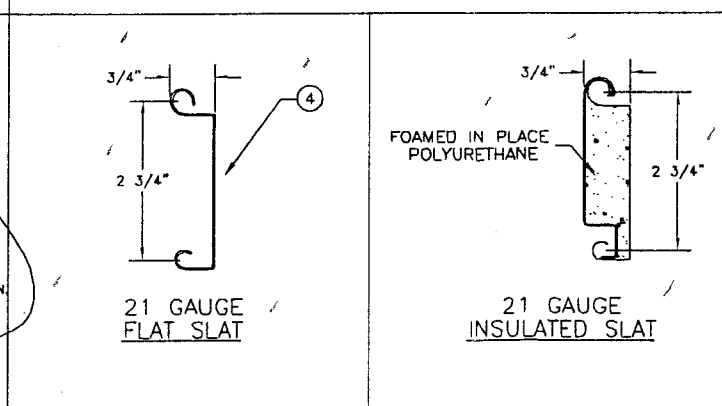
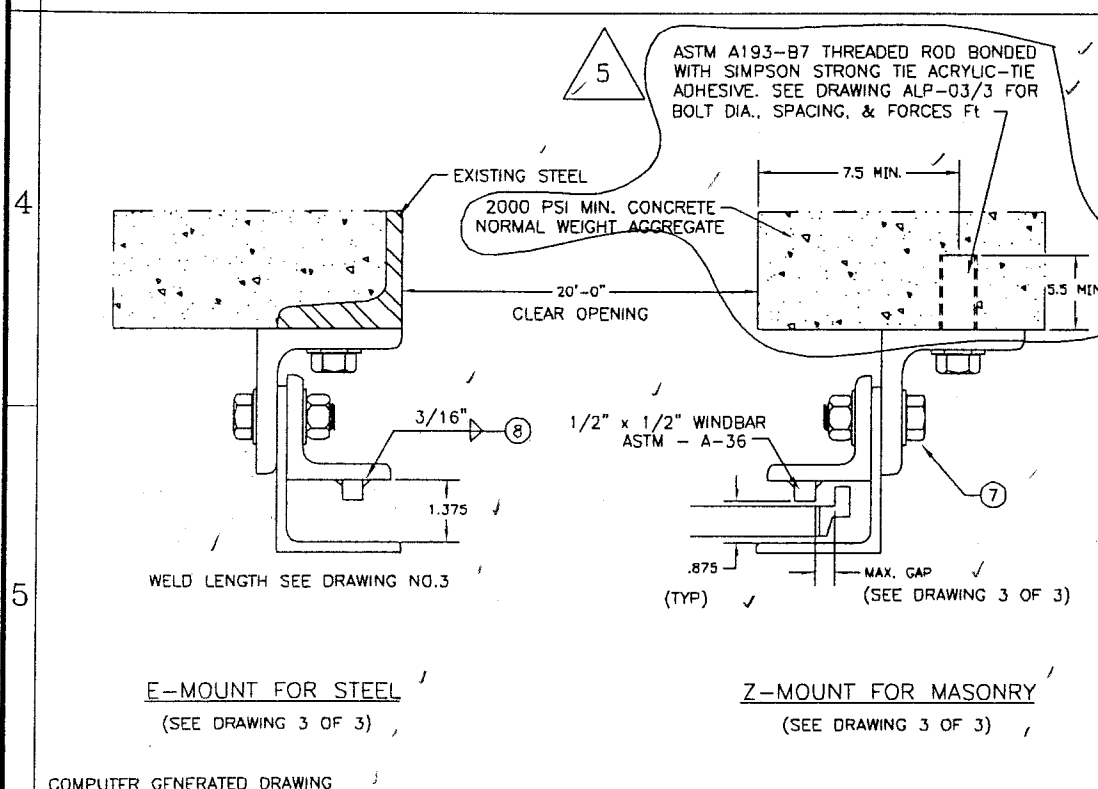
Candido E. Font PE
Senior Product Control Examiner
NOA No 05-1129.02
Expiration Date: December 07, 2006
Approval Date: June 29, 2006



GENERAL NOTES

1. THIS DOOR WAS DESIGNED ACCORDING TO THE 2004 EDITION OF THE FLORIDA BUILDING CODE.
2. CALCULATIONS ON POSITIVE AND NEGATIVE DESIGN PRESSURE ARE PERFORMED IN ACCORDANCE WITH ASCE 7-88 (MINIMUM DESIGN LOADS FOR BUILDINGS AND OTHER STRUCTURES)
3. THE DETAILS AND SPECIFICATIONS SHOWN WITHIN THESE SET OF DRAWINGS REPRESENT THE PRODUCTS TESTED FOR IMPACT, CYCLIC AND STATIC AIR PRESSURE ACCORDING TO DADE COUNTY PROTOCOLS PA 201, 202, AND 203 AT BASE DESIGN LOADS OF 60 PSF POSITIVE AND NEGATIVE.
4. SLATS TO BE ASTM A-446 GRADE C WITH G-90 GALVANIZING OR STAINLESS STEEL WITH MINIMUM $F_y = 40$ KSI
5. ALL STEEL ANGLES AND WINDBAR TO BE SHOP PRIMED.
6. WINDLOCKS TO BE DUCTILE IRON WITH MINIMUM $F_y = 42$ KSI
7. ALL ASSEMBLY BOLTS TO BE ASTM - A 449 / SAE GRADE 5 OR STAINLESS STEEL-304. THREADS ARE INCLUDED IN THE SHEAR PLANE.
8. ALL WELDING TO BE IN ACCORDANCE WITH AWS LATEST EDITION AND SOUTH FLORIDA BUILDING CODE. WELDING TO BE DONE BY CERTIFIED WELDERS USING 70XX ELECTRODES
9. SPRING COUNTERBALANCE TO BE HOUSED IN A STEEL PIPE OF DIAMETER AND WALL THICKNESS TO RESTRICT MAXIMUM DEFLECTION OF 0.03" PER FOOT OF DOOR WIDTH. ROLL-UP MECHANISM NOT PART OF THIS APPROVAL MUST BE CERTIFIED BY AN INDEPENDENT CERTIFYING AGENT.
10. CHARGE WHEEL FOR APPLYING SPRING TORQUE FOR COUNTERBALANCE ASSEMBLY AND FUTURE ADJUSTMENTS
11. RIVETS FOR WINDLOCKS/ENDLOCKS ARE TO BE SEMI-TUBULAR 0.246/0.252 DIA. 0.437 MUSHROOM HEAD x 7/16", ASTM A-31.
12. HOOD IS TO BE 24 GAUGE ASTM - 525 WITH G-90 GALVANIZING
13. BRACKETS ARE STEEL PLATES NOT LESS THAN 1/4" THICK. BALL BEARING AT ROTATING SUPPORT POINTS. BOLTED TO MOUNTING ANGLE, SUPPORTS COUNTERBALANCE ASSEMBLY AND FORMS END ENCLOSURES. SIZED TO CONFORM

DATE	NO.	REVISION RECORD	DRAWN	CHECK
10/05	5	REVISED TO CONFORM TO 2004 FL BLDG CODE	S.A.M	
11/2	4	REVISED BOLT DIMENSIONS	S.A.M	
9/29	3	REVISED DIMENSIONS	S.A.M	
5/23	2	SPACE ADDED TO TITLE BLOCK	S.A.M	
4/25	1	REVISED NOTE #4	S.A.M	



DESIGN PRESSURE RATING
+/- 60 PSF

APPLICATION# 94-1101.06

REDISTORM20

F.P. DEGIOVANNI P.E.
41 FLANDERS RD.
MONTAUK, N.Y. 11954
FL. LICENSE NO. 55071

John P. Degiovanni
DATE 5/15/2006

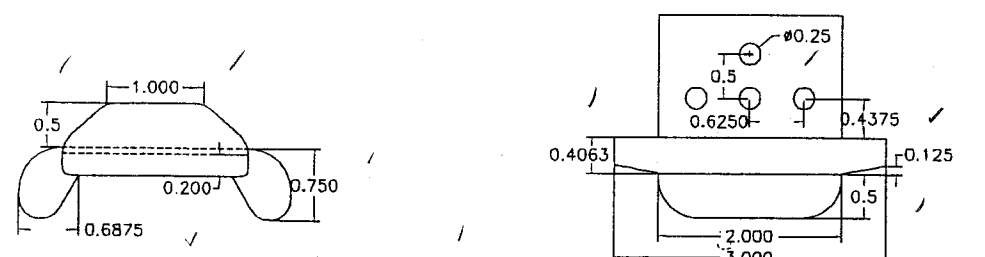
05-1129.02
12/07/05

DRAWN BY S.A.M.
APPR. BY
DATE 4-24-95
DRAWING# ALP1-01/3 REV. 5

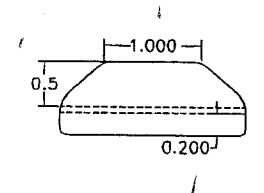
ALP
OVERHEAD DOORS, INC.
8 HULSE ROAD, EAST SETAUKET N.Y. 11733
TEL: (631)473-9300 FAX: (631)642-0800
© COPYRIGHT 1995

PATENT PENDING

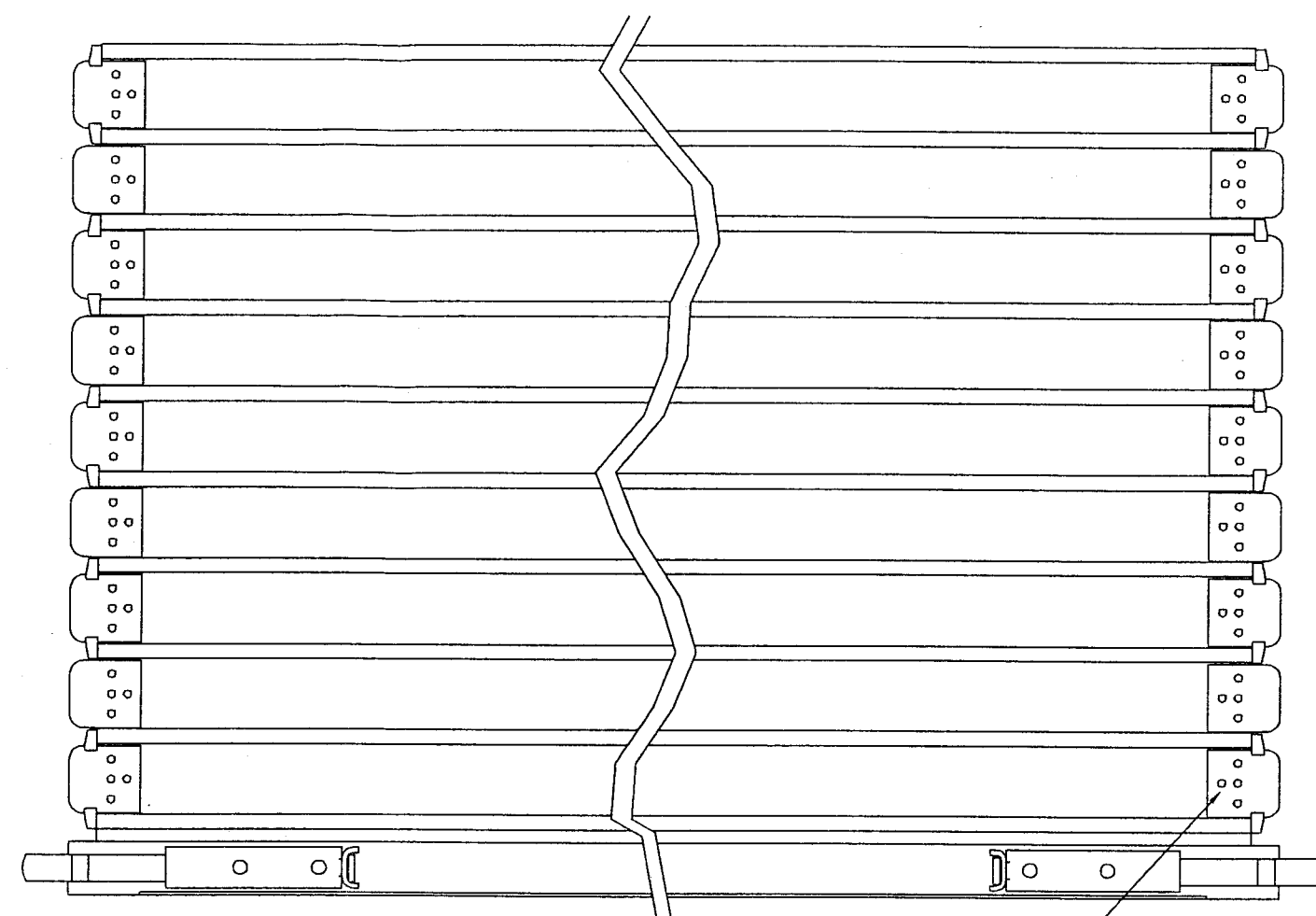
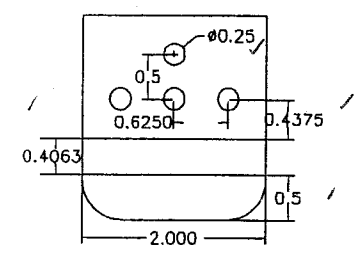
A B C D E F G H



WINDLOCK / ENDLOCK

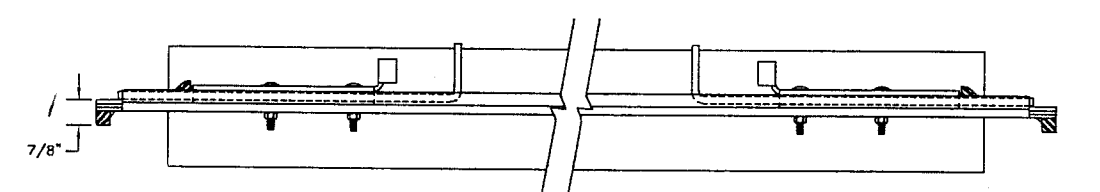
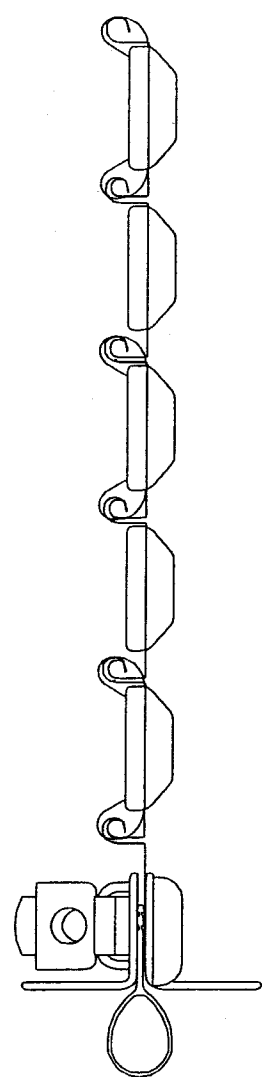


WINDLOCK

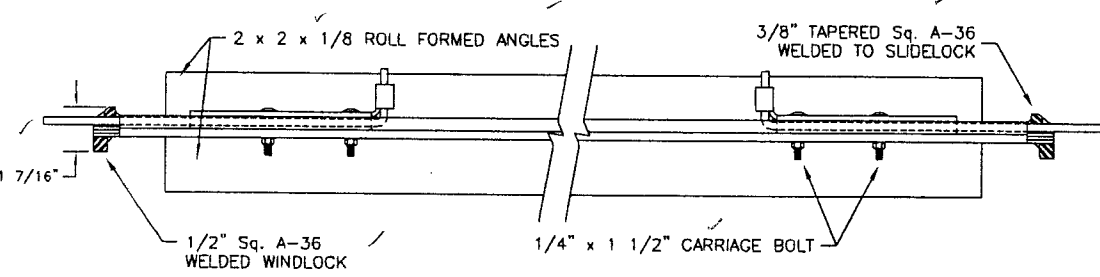


SEMI-TUBULAR MUSHROOM HEAD RIVETS
MINIMUM Fy = 37,000 PSI

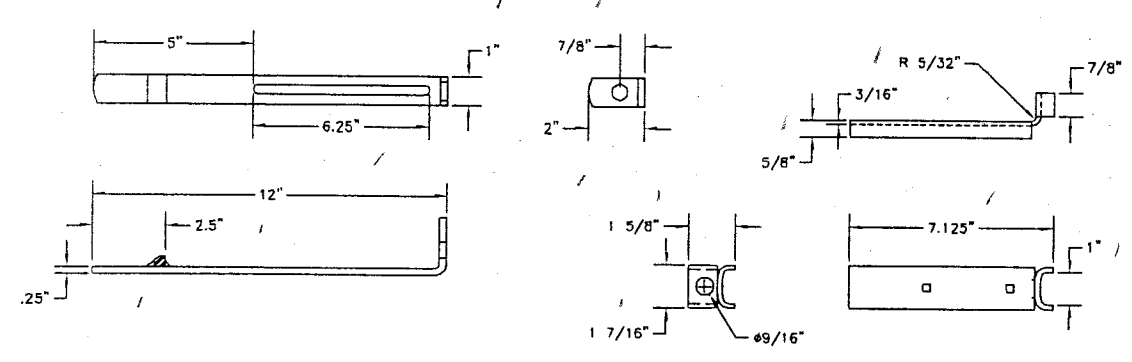
NUMBER OF SLATS TO ACCOMMODATE OPENING HEIGHT



UNLOCKED POSITION



LOCKED POSITION
SLIDE LOCK
PATENT PENDING



PATENT PENDING

DATE	5/23	NO.	1
REVISION RECORD	SPACE ADDED TO TITLE BLOCK		
DRAWN	S.A.M.		
CHECK			

WINDORM
OVERHEAD DOORS, INC.
8 HULSE ROAD, EAST SETAUKET N.Y. 11753
TEL: (631)473-9300 FAX: (631)642-0800
© COPYRIGHT 1995

APPLICATION# 94-1101.06

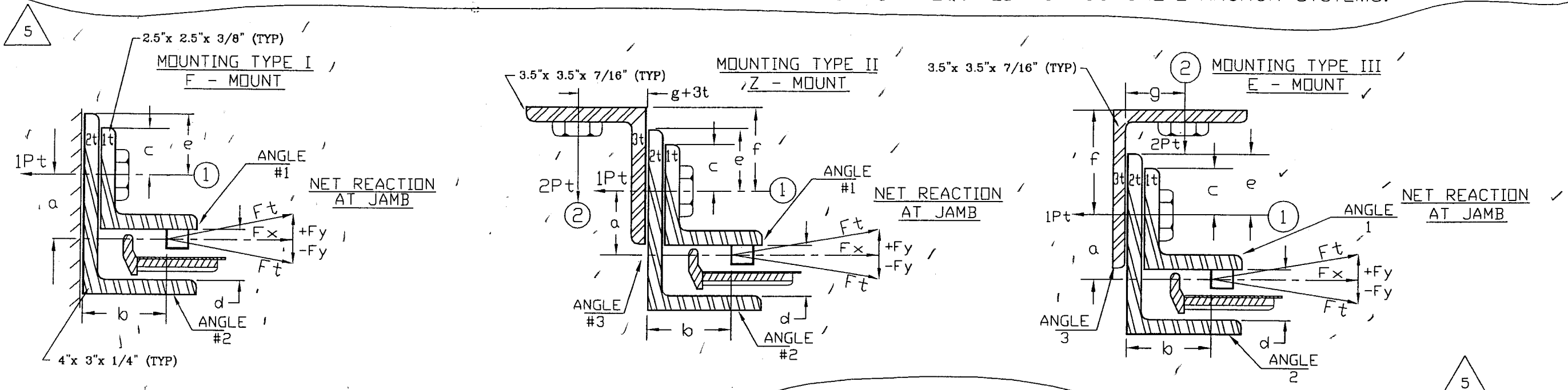
REDISTORM20
F.P. DEGIOVANNI P.E.
41 FLANDERS RD.
MONTAUK, N.Y. 11954
FL. LICENSE NO. 55071

Teresa P. DeGiovanni
DATE 5/15/2006

PRODUCT REVISION
in compliance with the Florida
Building Code
05-1129.02
12/17/06

DRAWN BY	S.A.M.
APPR. BY	
DATE	4-24-95
DRAWING#	ALP1-02/3
REV.	1

1. THE FOLLOWING CALCULATIONS ARE BASED ON ACTUAL TESTING RESULTS ON THE SLAT DEFLECTION CURVE ASSUMING THE SHAPE OF A CATENARY AS SOON AS THE WINDLOCKS ENGAGE THE GUIDES. THE WINDLOCKS LIMIT THE SLAT DEFLECTION AND BENDING STRESS AND ARE DESIGNED TO ENGAGE THE GUIDES PRIOR TO THE SLATS ATTAINING MAXIMUM ALLOWABLE DEFLECTIONS AND BENDING STRESS WITHOUT RESTRAINTS
2. IT SHALL BE THE RESPONSIBILITY OF THE CONTRACTOR / OWNER TO VERIFY THAT THE STRUCTURE IS DESIGNED TO SUPPORT FORCES F_x AND F_y AT BOTH JAMBS
3. BOLTS TO BE AS PER ASTM A449 EXCEPT FOR MOUNTING TO CONCRETE JAMBS WHICH SHALL BE ASTM 193-B7 THREADED ROD BONDED WITH SIMPSON STRONG-TIE ACRYLIC-TIE ADHESIVE ANCHOR SYSTEM. SPECIAL INSPECTION REQUIRED FOR CONCRETE ANCHOR SYSTEMS.



STEEL ANGLES TO BE ASTM A-36 DESIGNATION

F, E & Z MOUNTS FOR MOUNTING BETWEEN STEEL JAMBS SUITABLE TO ACCEPT FORCES

TYPE MOUNT	DOOR WIDTH	SLAT THK.	MOUNTING DIMENSIONS (SEE MOUNTING CONDITIONS)								MAX. GAP	D = BOLT DIA., S = SPACING (IN) Pt = BOLT TENSION FORCE, Ps = BOLT SHEAR FORCE								NET REACT FORCE / FT				
			a	b	c	d	e	f	g	1D		1S	1Pt	1Ps	2D	2S	2Pt	2Ps	DEFL. IN.	W'BAR THK.	RIVETS NO/DIA.	WELD LEN.	Fx	Fy
F	20'-0"	.0355"	1.75	1.75	1.00	1.375	.875	N/A	N/A	.875	.625	12	9586	564	N/A	N/A	N/A	N/A	12.72	.5	4/.25	13/16	2692	564
	16'-0"	.0355"	1.75	1.75	1.00	1.375	.875	N/A	N/A	.5	.625	12	8266	425	N/A	N/A	N/A	N/A	8.63	.5	4/.25	13/16	2418	496
	12'-0"	.0355"	1.75	1.75	1.00	1.375	.875	N/A	N/A	.25	.625	12	6385	273	N/A	N/A	N/A	N/A	5.31	.5	4/.25	13/16	1920	293
Z	20'-0"	.0355"	1.75	1.75	1.00	1.375	.875	1.563	2.5	.875	.625	12	9586	564	.625	15	4289	3364	12.72	.5	4/.25	13/16	2692	564
	16'-0"	.0355"	1.75	1.75	1.00	1.375	.875	1.563	2.5	.5	.625	12	8266	425	.625	15	3713	3022	8.63	.5	4/.25	13/16	2418	496
	12'-0"	.0355"	1.75	1.75	1.00	1.375	.875	1.563	2.5	.25	.625	12	6385	273	.625	15	2873	2400	5.31	.5	4/.25	13/16	1920	293
E	20'-0"	.0355"	1.75	1.75	1.00	1.375	.875	2.063	1.375	.875	.625	12	9586	564	.625	11	5880	2467	12.72	.5	4/.25	13/16	2692	564
	16'-0"	.0355"	1.75	1.75	1.00	1.375	.875	2.063	1.375	.5	.625	12	8266	425	.625	11	5325	2216	8.63	.5	4/.25	13/16	2418	496
	12'-0"	.0355"	1.75	1.75	1.00	1.375	.875	2.063	1.375	.25	.625	12	6385	273	.625	11	4217	1760	5.31	.5	4/.25	13/16	1920	293

Zc MOUNT FOR MOUNTING TO NORMAL-WEIGHT AGGREGATE CONCRETE $f_c = 2000\text{psi MIN.}$

ZC	20'-0"	.0355"	1.75	1.75	1.00	1.375	.875	1.563	2.5	.875	.625	12	9586	564	.625	9.75	2788	2187	12.72	.5	4/.25	13/16	2880	564
	16'-0"	.0355"	1.75	1.75	1.00	1.375	.875	1.563	2.5	.5	.625	12	8266	425	.625	9.75	2414	1965	8.63	.5	4/.25	13/16	2723	496
	12'-0"	.0355"	1.75	1.75	1.00	1.375	.875	1.563	2.5	.25	.625	12	6385	273	.625	9.75	1868	1560	5.31	.5	4/.25	13/16	2671	293

PATENT PENDING

REVISION RECORD

NO.	DATE	REVISION
5	5/23/01	SPACE ADDED TO TITLE BLOCK
2	7/12/02	REVISED CALCULATIONS
3	9/29/03	ADDED NOTE 3; REVISED CALCULATIONS
4	11/2/04	REVISED NOTE 3; REVISED CALCULATIONS
5	10/05/05	REVISED TO CONFORM TO 2004 FL BLDG CODE

REDISTORM20

F.P. DEGIOVANNI P.E.
41 FLANDERS RD.
MONTAUK, N.Y. 11954
FL. LICENSE NO. 55071

DATE: 5/15/2006

DRAWN BY: S.A.M.

APPR. BY:

DATE: 4-24-95

DRAWING#: ALP1-03/3

REV. 5