



11949 Acme Rd.  
Wellington, Florida 33414  
561-308-0217 ph  
steveh@ltproducts.net  
www.ltproducts.net

DCA09-DEC-341

September 22, 2009

Mr. Mo Madini  
Florida Department of Community Affairs  
Building Codes and Standards Office  
2555 Shumard Oak Blvd.  
Tallahassee, FL 32399

FILING AND ACKNOWLEDGEMENT  
FILED, on this date, with the designated  
Agency Clerk, receipt of which is hereby  
acknowledged.

*Miriam Snipes* 10/15/09  
Miriam Snipes Date  
Deputy Agency Clerk

Re: declatory statement for LifeTime Lumber

Dear Mr. Madini,

I am writing, as directed by you in our telephone conversation yesterday, to get a clarification from the state of Florida, if our product needs structural certification. I have been directed by several different County building Departments saying that our product needs to meet structural compliance. I find this odd for several reasons. Mainly because our product is used outdoors and is not a part of any structure other than an elevated dock or deck. When getting approval with the city and County of Los Angeles as well as the city of San Diego, they did not classify this as a structural product. But, I understand how different areas have different requirements. Please find enclosed the product literature and sample for your inspection. Also I would appreciate if you have any references you could provide where I could present this product to other divisions within the state.

As you can see, this product is like none other on the market today. The combination of coal fly ash and urethane has literally created a product that can last a lifetime. Since the product is inorganic, mold and mildew will not form, it is termite and bug proof, is not toxic, does not absorb water, and does not decay or rot. The product is temperature stable, does not splinter, split, warp or bow like traditional wood or even wood composites. Because of its components, the entire product line meets Class B Fire rating standards but also through specific products, meets Class A Fire ratings standards. It meets OSHA and ADA slip resistant standards and qualifies for LEED 4.1 & 4.2 credits under the United States Green Building Council.

Once you've had time to examine the material, please contact me for your thoughts. Also if more samples are needed, please feel free to request. I appreciate your time and cooperation.

Sincerely,

*S. Hamline*  
Stephen A. Hamline  
LifeTime Products LLC

Exclusive Distributor for



561-308-0217  
Wellington, Florida  
www.ftproducts.net  
steveh@ftproducts.net



Stephen Hainline

Fencing \* Decking \* Docking \* Seawalls

# Lifetime Products LLC

PRODUCT INTRODUCTION  
DECKING & FENCING



Exclusive distributors of

# A UNIQUE COMPOSITE

- LifeTime Lumber® is unlike any other composite on the market
- Formulated from recycled materials (Fly Ash and urethanes)
- Contains no wood!
- Contains no plastics!
- All other composites do contain wood
- “THE NEXT GENERATION”
- Product of a patented process

**LifeTime**  
LUMBER®

# MADE TO LAST

- Will not be damaged by termites and pests
- Will not rot, decay, or dry out
- Will not be attacked by mold and mildew
- Class A & B Fire Rated products available
- Provides a limited lifetime guarantee against rot and termites
- Stable under weather exposure
- Stable to extreme temperature conditions
- Does not absorb water



**LifeTime**  
LUMBER

# MADE TO LOOK GREAT

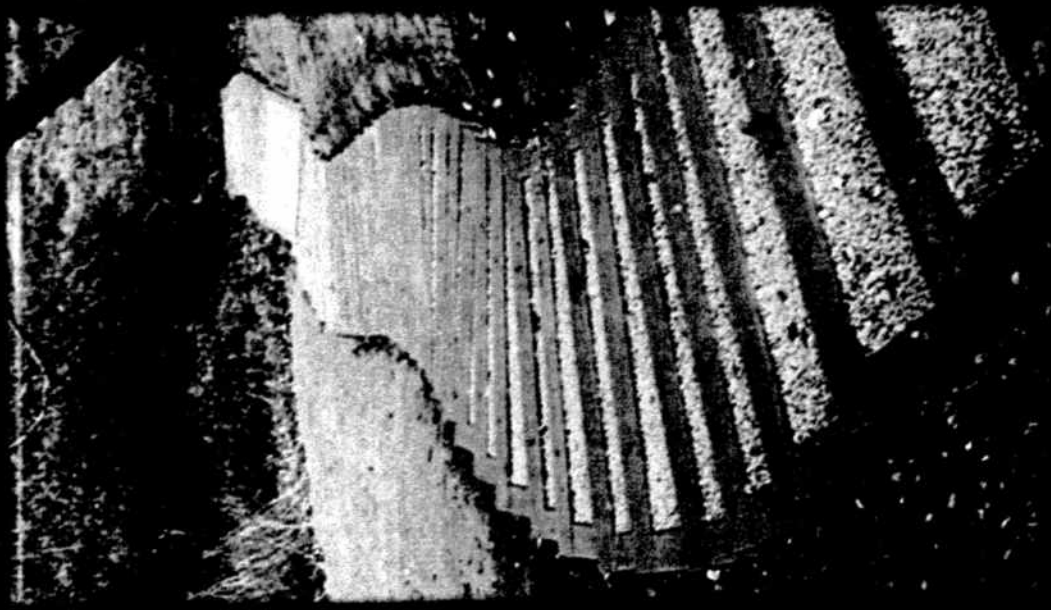
- Fade resistant - Stain resistant
- NO warping, splitting or splintering
- Beautiful Wood like appearance
- NO annual painting or staining
- Deters horses from cribbing
- Non-toxic to animals
- No pressure washing

**LifeTime**  
LUMBER®



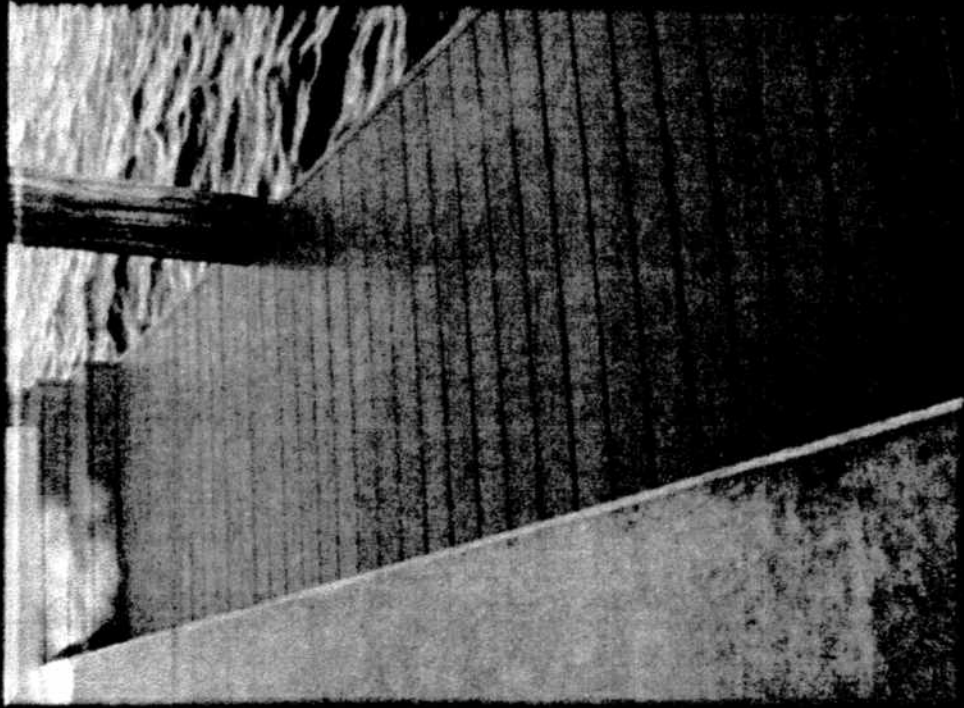
# MADE TO BE SAFE

- Class A & B Fire Rated products available
- Meets ICC strength standards
- Meets OSHA slip resistance recommendations
- Will not splinter or shard – safer exposure
- Green product – does not seep toxins into environment



**LifeTime**  
LUMBER®

# EASY TO INSTALL



- Installs like wood
- No special instructions
- Minimal expansion and contraction
- Does not absorb water
- 30% lighter than wood/plastic composites
- No mushrooming around screw heads
- No blowouts on the backside
- No need to sand rough edges after sawing

**LifeTime**  
LUMBER™



# AND IT'S GREEN!

- Certified 60% recycled material
- Qualifies for LEED points. (Leadership in Energy & Environmental Design)
- No toxicity from the product
- No hazardous plant emissions
- Uses less energy than other composite processes
- Saves our forests

**LifeTime**  
LUMBER®



# MEETING MUNICIPALITY REQUIREMENTS

- Mandates to purchase high recycled-content materials
- Preference for fireproof material
- Preference of low maintenance products
- LifeTime Lumber is the preferred product for:  
City of Los Angeles and Los Angeles County

**LifeTime**  
LUMBER<sup>®</sup>

# APPLICATIONS

DECKING

DOCKING

POOL DECK

FENCING

BENCHES

PICNIC TABLES

NATURE TRAILS

WALKWAYS

RAILINGS

SEA WALLS

LANDSCAPING

RETAINING WALLS

EXTERIOR FURNITURE

SANDBLASTED SIGNS

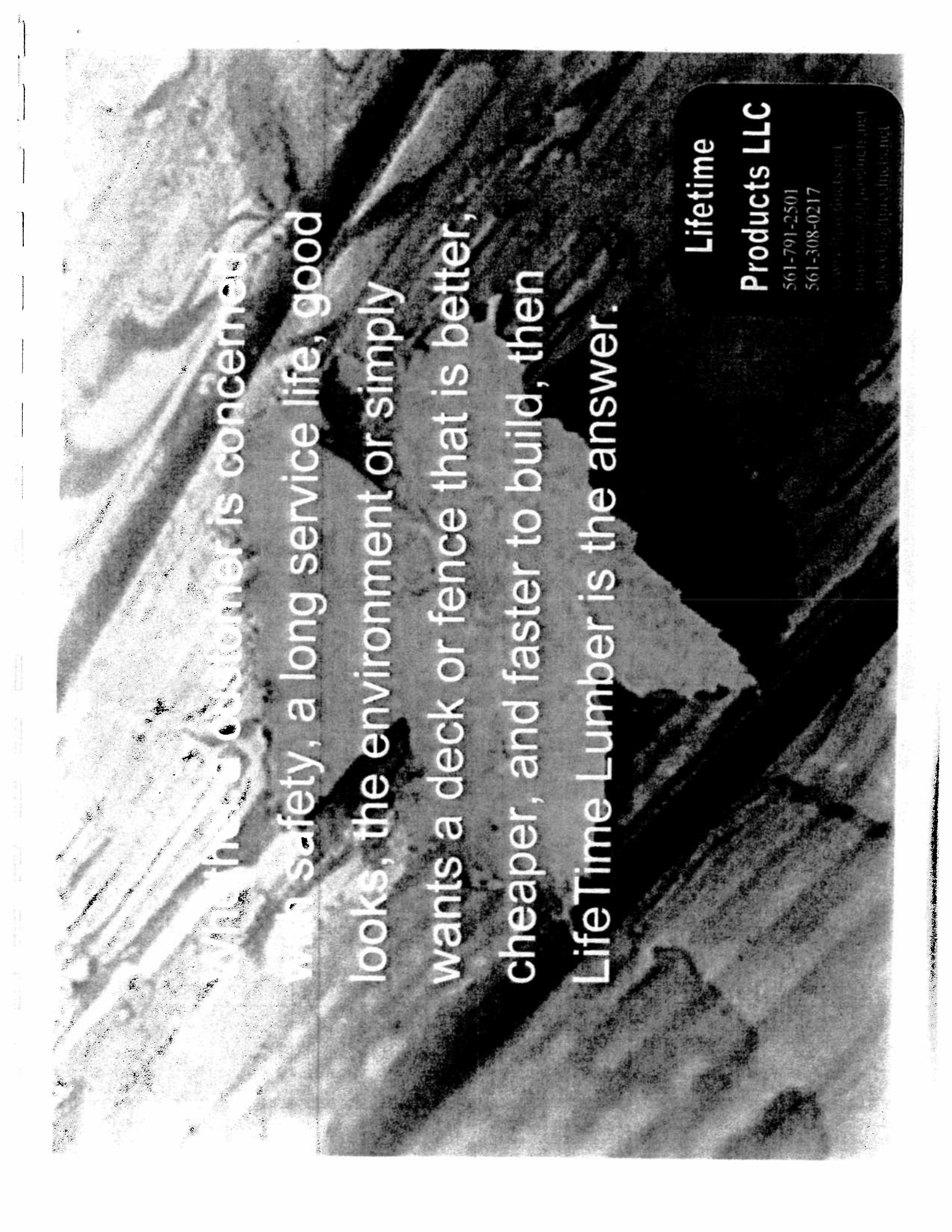
**LifeTime**  
LUMBER<sup>®</sup>

# Manufacturing Process

LifeTime Lumber is a product of a process that uses polyurethane as its cornerstone. Polyurethane chemistry is used in a wide variety of industrial and consumer applications because it has the ability to provide a unique combination of weight, strength, hardness, flexibility and resistance to water absorption. The filler material used in the process is fly ash generated from the use of coal to produce electricity. Our ash is a non-hazardous mineral particle residual of the coal combustion process used as a mineral filler in many other building materials such as concrete, cement blocks, bricks, tiles and other products. It's unique physical and chemical properties lend it to many recycling applications.

The LifeTime process is energy-efficient and does not discharge any residue that would be hazardous to the environment. In fact, by combining the beneficial use of ash, an energy-efficient operation and the lack of any discharge that could be hazardous, LifeTime Composites LLC achieves one of its primary goals by being environmentally friendly.

Complete MSDS sheet available.



With the new customer is concerned  
with safety, a long service life, good  
looks, the environment or simply  
wants a deck or fence that is better,  
cheaper, and faster to build, then  
LifeTime Lumber is the answer.

Lifetime

Products LLC

561-791-2501

561-308-0217

[www.lifetimeproducts.net](http://www.lifetimeproducts.net)

[info@lifetimeproducts.net](mailto:info@lifetimeproducts.net)

[www.lifetimeproducts.net](http://www.lifetimeproducts.net)

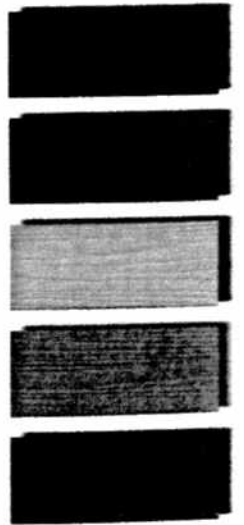



## Technical Specifications

Mechanical Properties - TEST RESULTS		
Mechanical Properties:	Test Method:	Results:
Modulus of Rupture	ASTM D6109	3500 psi
Modulus of Elasticity	ASTM D6109	500,000 psi
Compression Parallel	ASTM D143	2516 psi
Water Absorption	ASTM D1037	0.41%
Flame Spread Index - Class B	ASTM E84	55
Flame Spread Index - Class A	ASTM E84	25
Coefficient of Thermal Expansion	ASTM D696	0.0000107
Coefficient of Friction:	ASTM F609	
Dry Leather		.52-.70
Wet Leather		.67-.79
Natural Rubber-Dry		> .80
Natural Rubber-Wet		.70-.76

## A Choice of 5 Colors

BROWN    GRAY    WHITE    SAGE    BLACK



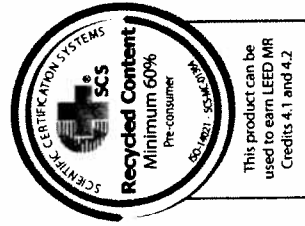
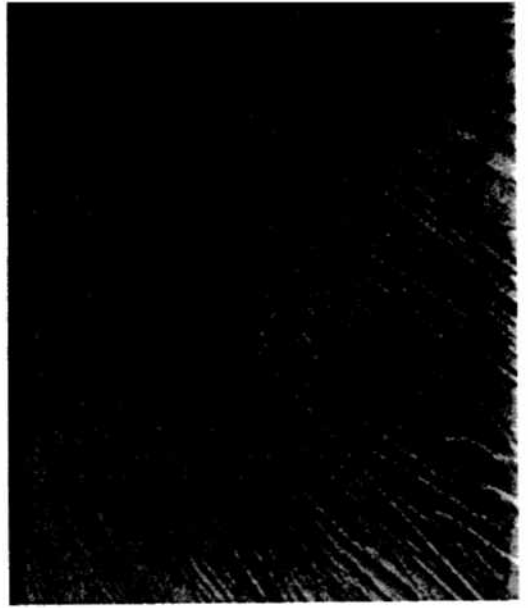


# The Last Deck You Will Ever Build.



A New Generation of Lumber Products.

The Eco-Friendly Wood Alternative That Looks Like Wood And Has Low Maintenance Requirements.



LifeTime Composites  
 Technical Team Review  
 April 21, 2009  
<http://www.lflumber.com>



# FIRE

In California there are many jurisdictions that are imposing strict regulations on building products for fire resistance. In general building products are tested and fall into classifications of A,B, and C. The best rating being A. For your protection LifeTime Lumber offers a Class A rated product.

## ASTM E84 Class A PRODUCT

Flame Spread Index = 25  
Smoke Developed = 200

## WILDLAND-URBAN INTERFACE BUILDING STANDARDS

### Part A - Under Flame Test

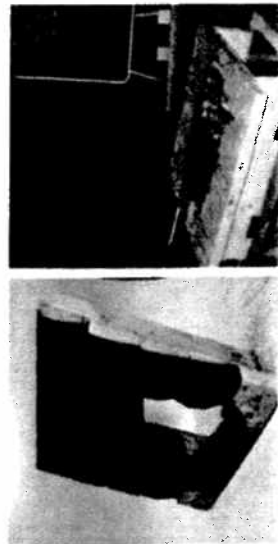
Test Parameters	Test Criteria	Test Result
Peak Heat Release Rate (kW/m <sup>2</sup> )	25 Max	18
Sustained Flaming or Glowing (40min)	No	No
Flaming Drops	No	No
Structural Failure	No	No

### Part B - Burning Brand Test

Test Parameters	Test Criteria	Test Result
Sustained Flaming or Glowing (40min)	No	No
Flaming Drops	No	No
Structural Failure	No	No

Compliant With California State Fire Marshall Requirements and San Diego County Requirements

Wood Plastic Composite After Burning Brand Test  
Life Time Lumber  
After Burning Brand Test



# WATER

## Water Absorption - ASTM D1037

Sample	Time Period	Weight (g)		% change
		Before	After	
2 x 6	2 weeks	762	765	0.41%
2 x 6	1 year	762	808	6.0%

## Water Immersion Testing - ASTM D6943

Immersion Testing Method A	30 days in water No visual change Adhesion 5B	48 hours in Olympic Premium Deck Cleaner Adhesion 5B
----------------------------	---	---

## Salt Water Spray Testing - ASTM B117

Salt Spray Resistance ASTM B-117	After 2,600 hours: No effect on film properties
----------------------------------	--

## Mold Growth Testing - ASTM D3232

Mold Growth Resistance ASTM D3273	28 days under test Rating = 10 No mildew growth. Excellent mildew resistance
Antimicrobial Activity JIS Z 2801:2000	Reduction in microbial activity: >99.99%

## UV Weathering Properties

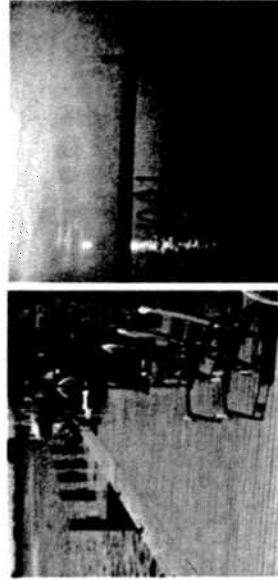
500 hours of QUV cycles is representative of 5 years in a high sun light / humid environment.

QUV Weathering Test ASTM G-154	Color Change ΔE (CIE,LAB)
12,000 hours UV 340 bulbs	500 hours = < 1.0 units
11:10 hours condensation	1,000 hours = < 3.0 units
10 hours water spray	2,000 hours = < 5.0 units

## 13 Month Weathering Field Tests

No structural degradation. No warping, cracking or crazing.  
No mold growth. No color change evident.

Ocean Front Deck Key West, Florida  
Fresh Water Dock Stoney Lake, Ontario



# ENVIRONMENT

ASTM D696 Coefficient of Thermal Expansion  $4.0 \times 10^{-4}$   
This means a 48 ft board will only expand 3/16" with a 92° F Temperature increase.  
A Typical WPC 48ft board will expand over 1" with a 92° F Temperature increase

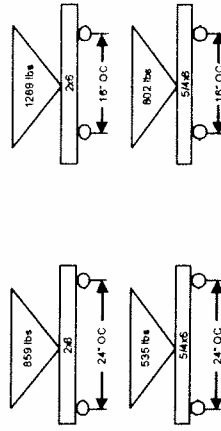


## Screw Pull Out Test ASTM D1761

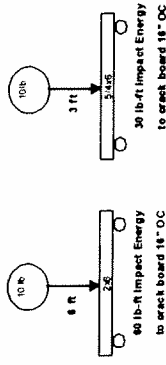
Ultimate load = 827 lb,  
Allowable Capacity = 276 lb,

## Flexural Testing ASTM D6109

Modulus of Rupture = 2500 psi  
Modulus of Elasticity = 315,000 psi



## Impact Testing ASTM D6109



## LifeTime Lumber Comparison

Benefit	LifeTime Lumber	Plastic Lumber	Trex	Portico	Correct Deck	Wood
Limited Lifetime Residential Warranty	Y	Y	N	N	Y	N
Limited 15 Years Commercial Warranty	Y	Y	N	NP	Y	N
No Toxic Outgassing	Y	N	Y	Y	Y	Y
Class "A" Fire Rating	Y	N	N	N	N	N
2 x 6 Tested over for 200lb pst on 24" span	Y	N	N	N	Y	N
Screw Retention over 900 lbs	Y	N	N	N	Y	N
No Wood for Superior Fade or Stain Resistance	Y	Y	N	N	N	N
Thermal Expansion less than 0.000011 in./in./deg PF	Y	N	N	N	N	N
No Poisonous Hydrogen Chloride Gas Released when Burned	Y	N	Y	Y	Y	Y
Modulus of Elasticity 500,000psi or better	Y	N	N	N	Y	N

Y=yes; N=no; NP= not published



LifeTime Lumber Does It All:  
**Stronger, Lighter, Better**

# The Advantages of LifeTime Lumber®

## What others promise - LifeTime Delivers

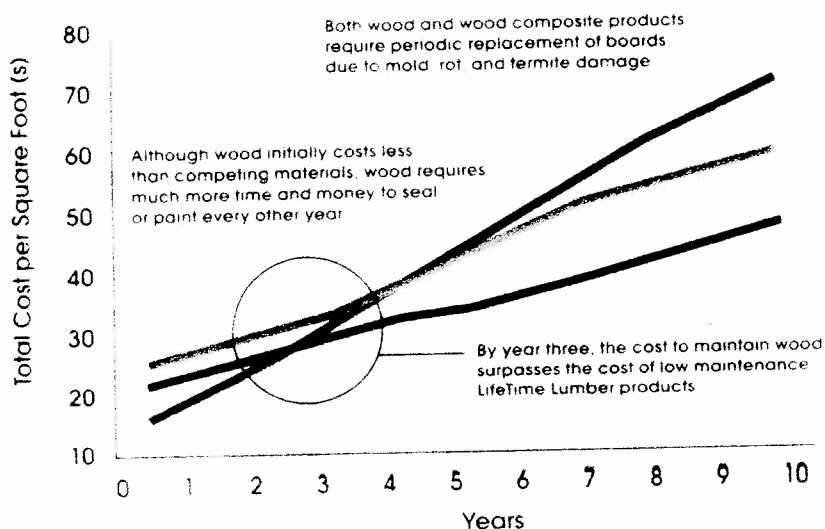
	LT Lumber	Wood	WPC
Class A Fire Rating	✓	-	-
Contains No Wood	✓	-	-
Does Not Rot	✓	-	-
Slip Resistant	✓	-	✓
Resists Damage due to Salt Water	✓	-	-
Impervious to Termites	✓	-	-
Does Not Mold or Mildew	✓	-	-
Resists Fading and Staining	✓	-	-
No Splitting or Splintering	✓	-	✓
No Mushrooming	✓	-	-
Minimal Expansion / Contraction	✓	-	-
Light Weight	✓	✓	-

Because of LifeTime's unique wood free formula, LifeTime can truly deliver what we promise.

WPC = Wood Plastic Composite

Visit [www.LTLumber.com](http://www.LTLumber.com) or Call 1-877-AT LIFETIME (285-4338)

### LIFETIME LUMBER SAVES YOU TIME AND MONEY



**Wood**  
Total Cost = \$72/sq foot

**Wood Plastic Composites**  
Total Cost = \$60/sq foot

**LifeTime Lumber**  
Total Cost = \$48/sq foot

Total cost includes installation, maintenance and board replacements



LifeTime Products LLC  
East Coast Distributors  
561-791-2501  
561-308-0217

## Product Attributes "The Next Generation"

- LifeTime is a composite: but not a wood plastic composite.
- LifeTime contains no wood or thermoplastics.
- LifeTime is unique in providing the following combination of attributes:
  - Class A Fire Rating available (Class E Fire Rating standard)
  - Contains no wood - 100% wood free product
  - Durable
  - Impervious to termites and pests
  - Resistant to mold or mildew - no fungicides or herbicides required
  - Resistant to fading and staining
  - Resistant to damage due to salt water
  - Resistant to water absorption
  - Does not split or splinter
  - Minimal expansion/contraction. No spacing calculations required
  - Meets USRA Slip Resistance Standards
  - Light weight
  - Looks like wood
  - Can be worked like wood - no special instructions
  - 100% recycled post consumer material
  - Can earn LEED credits, no toxicity from boards, no plant emissions, uses minimal utilities
  - 2x4 joists 24" joists (Decks and Docks)
  - 2x4 joists 16" joists (Decks and Docks)
  - Does not require the use of toxic preservatives
  - Does not present any hazardous storage, installation, or removal conditions



BROWN



GREY



WHITE



SAGE



BLACK



LifeTime Products LLC  
East Coast Distributors  
561-791-2501  
561-308-0217



## What Makes LifeTime Lumber® So Green?

LifeTime Lumber is very friendly to the environment. It is made from 65% recycled material, helping reduce the use of virgin raw materials and the energy required to produce them. LifeTime Lumber complies with the requirements for LEED 4.1 and 4.2 credits.

Decks, docks and fencing made from LifeTime Lumber far outlast structures made from wood, helping ease lumber demand. LifeTime Lumber is chemically inert, and releases no VOCs (volatile organic compounds) into the air. It contains no chemicals that are hazardous to the water or soil where LifeTime Lumber decks, docks and fences are installed.

LifeTime Lumber also helps reduce transportation energy use because its service life is exceptionally long, making replacement unnecessary for decades. In addition, the use of recycled material helps reduce landfill volume.

Processes used to manufacture LifeTime Lumber are green as well, and are engineered to consume as little energy as necessary, and to minimize waste through recycling and re-use of raw materials wherever possible.

# Certificate of Achievement

Scientific Certification Systems (SCS) does hereby certify that an independent evaluation has been conducted on behalf of:

*LifeTime Composites LLC*

Brodhead, WI, USA  
for the following product(s):

**LifeTime Lumber®, Decking, and Fencing**

This product(s) meets all of the necessary qualifications to be certified for the following claim(s):

**Minimum 60% Pre-consumer Recycled Fly Ash Content  
(dry weight basis)**



SCS Certificate Registration Number: SCS-MC-01364

8/16/2008 to 8/30/2009

Certification Period

A handwritten signature in black ink, appearing to read 'Robert Hrupis'.

Robert J. Hrupis, Senior Vice President





LifeTime Products LLC  
East Coast Distributors  
561-791-2501  
561-308-0217

## LifeTime Lumber<sup>®</sup> for Local Government



LifeTime Lumber products are ideal for municipal and county building and renovation projects where green and sustainable products are desirable and fire safety is critical.

LifeTime Lumber is made from 65% recycled material and complies with the requirements for LEED 4.1 and 4.2 credits.

As a tested and proven non-structural wood replacement material, LifeTime Lumber can be used wherever wood is used. The standard size boards (5/4" x 6" and 2" x 6" and 4" x 4") can be fabricated into decking, docks, and a wide range of fencing types including the LifeTime Fence System.



### Properties and Benefits

#### *Fire resistance*

LifeTime Lumber is available in both Class B and Class A fire ratings, according to ASTM E-84 standards. Both flame spread and smoke generation compare exceptionally well to wood, and far exceed the performance of virtually all other composite materials.

This high performance fire resistance helps LifeTime Lumber conform with local government fire safety programs and the highest building code standards for wood replacement composite materials

#### *Environmental sustainability*

As a certified green product, LifeTime Lumber contains 65% recycled material, and has no toxic materials, preservatives or compounds that can leach from the material.

#### *Low maintenance*

It needs no staining or painting, will not rot, will not be damaged by termites, and does not support bacterial or fungal growth. LifeTime Lumber does not require routine maintenance other than occasional cleaning, such as mild soap and water.

LifeTime Lumber is unaffected by exposure to salt or fresh water, making it an ideal dock and marina building material.

#### *Long service life*

LifeTime Lumber is an engineered composite product that will provide many years of high performance, low maintenance service life. It will outlast the wood it replaces by many years.

#### *Ease of use*

LifeTime Lumber can be fabricated using standard wood working tools and fastening systems. A carbide saw blade is recommended. Otherwise, all standard tools and materials can be used with LifeTime Lumber.

#### *Used by discriminating municipalities*

The City of Los Angeles, Encinitas, and the County of Los Angeles, California, for example, are just a few of the local governments where LifeTime Lumber is the preferred product.

## **Applications**

### *Decks*

Decks made from LifeTime Lumber provide exceptional performance, low maintenance and long service life. The surface has an authentic wood-grain look, which helps guard against slipping. In addition, LifeTime Lumber has an engineered infused coating that is impervious to moisture, and resists cracking and chipping.

The 2" x 6" LifeTime Lumber deck boards can be used with 24" on-center joists, due to the superior structural strength, and 5/4" x 6" deck boards are installed on 16" on-center joists.

### *Docks*

LifeTime Lumber resists exposure to salt and fresh water, making it ideal for use in docks and marinas, and other applications exposed to water. The surface helps provide a slip-resistant surface in wet conditions.

Independent tests, according to ANSI and ASSE specifications, and ASTM F609, show that LifeTime Lumber exceeds the minimum requirements of OSHA in both dry and wet conditions, in all directions.

Additionally, LifeTime Lumber exceeds the slip resistance standards specified by the Americans with Disability Act (ADA) in both dry and wet conditions in all directions.

*Fence*

As a highly durable wood replacement, with added performance benefits, LifeTime Lumber is ideal for use in fencing such as along park trails, around sports fields, playgrounds and any public space where a wood-look fence adds aesthetic appeal as well as function.

*Other*

LifeTime Lumber is often used as the "riding wall" for indoor equestrian training facilities. The surface produces no splinters, is easy to clean, and will last indefinitely.

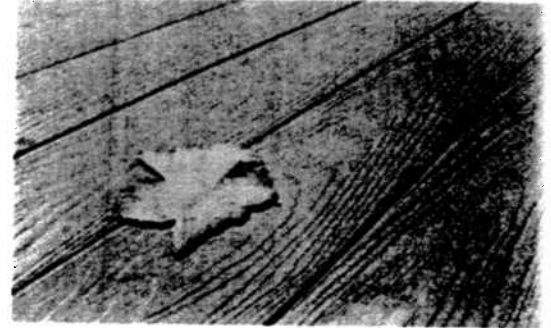
For other applications, please contact LifeTime Lumber for material suitability.

# LifeTime Composites LLC

*Redefining Green Building With A Better Lumber Alternative*

## About LifeTime Composites LLC

LifeTime Composites LLC is the manufacturer of LifeTime Lumber® a leading green material option designed to be the next-generation solution for composite decks, docks and fences. LifeTime Lumber's founders set out with a vision to create a wood replacement that contain neither wood, thermoplastics nor PVC – a vision that ultimately has birthed an entirely new building solution that is green and sustainable and uses 65 percent recycled materials. The LifeTime Composites' mission is to be an environmentally-conscious company that continually creates and develops green sustainable products.



## Why LifeTime Lumber®?

LifeTime Lumber® offers consumers a fire-resistant composite deck, dock and fence line that is made with fly ash, a non-hazardous inert mineral recovered from the combustion of coal in electric utilities. Utilizing fly ash - a product that is otherwise deemed waste - LifeTime Lumber is able to offer consumers a product that is environmentally-safe as well as durable and fire-resistant. Through this innovation, LifeTime Lumber offers builders a better wood alternative and a limited lifetime warranty against fire, rot and termites.

In addition to the extraordinary use of fly-ash, LifeTime Lumber is distinct from competitors in its utilization of urethane, a versatile polymer with unique physical capabilities. Many other composite lumber manufacturers use sawdust and other organic materials as filler and plastic mix as a bonding agent in their products. Unfortunately, this solution is often inadequate, as sawdust can absorb water and, over time, cause building materials to mold, mildew, delaminate and rot. Lifetime Lumber combats these issues through the use of fly-ash and urethanes which resist fire, water absorption and expansion & contraction.

## Certifications

LifeTime Lumber has received recycled material content certification from Scientific Certification Systems, the leading US independent third-party certifier of environmental claims. LifeTime Composites' products meet the necessary criteria for recycled content claims based on internationally recognized standards and guidance established by the International Organization for Standardization (ISO) and the US Green Building Council (USGBC).



The SCS certification of recycled material content can help the building project qualify for LEED MR 4.1 or 4.2 credits under the Leadership in Energy and Environmental Design (LEED) Green Building Rating System.

In conjunction with the company's recycled material certification, LifeTime Lumber is recognized as one of the few composite decking and fencing companies to receive a Class A fire rating for smoke and flame according to ASTM-E84 standards. As fires become more of a threat to homeowners and businesses, builders must find a company who can supply a product that

protects against both flame and smoke. LifeTime Lumber's fire rating offers builders peace of mind and allows stringent county and municipal builders the opportunity to utilize a lumber alternative that is not only safe and durable, but minimizes impact on the environment.

### **LifeTime Decks**

For the needs of consumer decking, LifeTime Lumber offers an innovative, "green" wood-alternative product that does not fade or stain and does not have to be painted, stained or sealed, allowing consumers to spend less time on deck maintenance and more time on the things they love.

Safety is the number one priority. LifeTime Lumber has been certified to meet the American Society for Testing and Materials (ASTM) standard for Class A fire rating and meets the minimum coefficient of friction standard recommended by OSHA for slip-resistant walking surfaces.

### **LifeTime Docks**

LifeTime Lumber's ability to resist the effects of water and water borne pests make it an excellent product around docks and piers. It performs well in both fresh and salt water environments. You will also find LifeTime to retain less heat from the sun and thus be easier to walk on.

### **LifeTime Fences**

Flexibility is the name of the game with LifeTime fencing, as the lumber can be used for various applications, including ranch and equestrian fencing, as well as barn stalls and barn siding. LifeTime fencing products are durable, do not suffer damage from termites, will not rot, do not require chemical treatment and, best of all, deter cribbing.



### **LifeTime Lumber Products**

LifeTime Lumber products are easier to install than wood, wood plastic composites and PVC. LifeTime products can be installed with normal wood working tools and do not require any special training for the installer. They come in a range of five rich colors: brown, gray, sage, black and white.

### **Future of Lumber Composites**

Although relatively new to the composite lumber industry, LifeTime Lumber is proving to be the principal company to watch as they expand distribution in both the United States and Canada. Lifetime Composites LLC's unique line of composite building products prove that the next generation of lumber composites is not only better but safer for the environment and the builder. For more information on LifeTime Lumber, or to find a distributor please log onto [www.lifetime lumber.com](http://www.lifetime lumber.com).

# Lifetime Products LLC

A Green Company

## 2009 Price List

Effective Date: 09/01/2009

**Lifetime Products LLC.**

Wellington, Florida 33414

561-791-2501

561-308-0217

www.lifetimeproducts.net

### PRODUCT

### Price p/lin foot

5/4" x 6" Board	\$ 2.80
5/4" x 6" Board (A rated)	\$ 3.40
2" x 6" Board	\$ 3.40
2" x 6" Board (A rated)	\$ 4.10
4" x 4" Post	\$ 5.10
4.25" x 6" Estate Post w-5/4 rail*	\$ 9.05
4.5" x 6" Estate Post w-2x6 rail*	\$ 9.50
End Caps (ea)	\$ 5.95

Prices based on all colors except white. White is special order with a 20% up-charge.

Standard board lengths: 8', 12', 16', 20'

Standard post lengths: 7', 8', 9', 10'

\* Price based on 7' post. Other Estate posts length prices may slightly vary.

**LifeTime**  
LUMBER

### An Exclusive Distributor for

Warranty Information: Lifetime Lumber is backed by a limited lifetime warranty. For full warranty details, please visit [www.LTLumber.com](http://www.LTLumber.com). Lifetime Lumber is manufactured using a proprietary process and equipment for which patents are pending. Copyright 2009 Lifetime Composites LLC. Lifetime Lumber is manufactured by Lifetime Composites LLC.



**ACAA** Advancing the Management & Use  
of Coal Combustion Products

