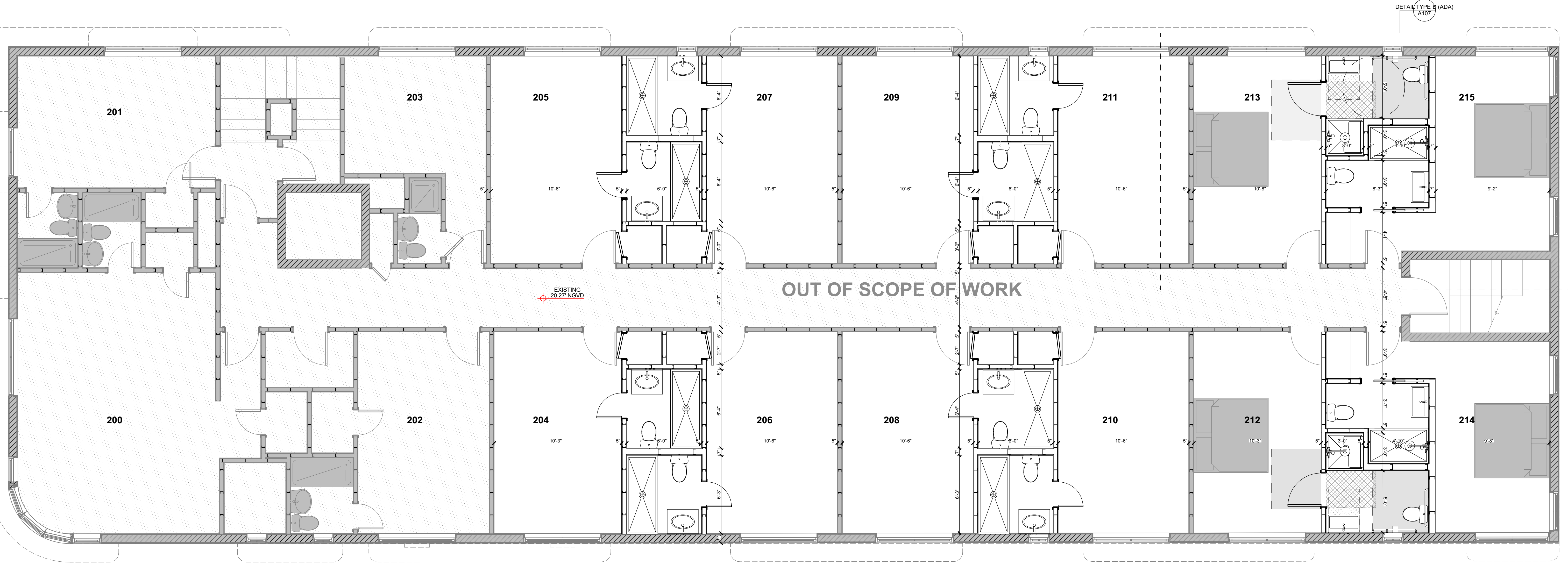






USE DIMENSIONS SHOWN. DO NOT SCALE DRAWINGS. IF THERE IS ANY DISCREPANCY IN THE DRAWINGS, PLEASE CONTACT THE ARCHITECT

**1** SECOND FLOOR  
1/4" = 1'-0"



- KEY NOTES:**
1. PROVIDE OR REPLACE WITH 5/8" M. R. BACKING BOARD AT BATHROOM AND SHOWER COMPARTMENT.
  2. ALL FLOOR AND WALLS TO BE, MINIMUM STC RATING OF 50.
  3. THE GLAZING IN SLIDING AND SWINGING DOOR AND IN SHOWER TO TUB ENCLOSURES, INCLUDING ANY GLAZING WITHING 60 INCHES OF THE FINISHED FLOOR SURFACE IN WALLS SURROUNDING ANY TUB OR SHOWER ENCLOSURE, SHALL BE CAT II SAFETY GLAZING PRODUCT. (R4410.2.6.2 SAFEGUARDS).
  4. ALL NEW INTERIOR UNITS FINISHES SHALL COMPLY WITH APPLICABLE SECTIONS OF FBC 2017 CHAPTER 8. ALL SELECTED INTERIOR DESIGN FINISHES WITHIN UNITS SHALL BE CLASS "C" RATING IN ACCORDANCE WITH CHAPTER 8.
  5. ALL INTERIOR FINISHES SHALL COMPLY WITH NPPA 101, SECTION 10.2.2.
- GLAZING IN SLIDING AND IN SWINGIN DOOR SHALL BE SAFETY-GLAZING COMPLYING WITH SAFETY STANDARD FOR ARCHITECTURAL GLAZING MATERIALS, CONSUMER PRODUCT SAFETY. (R4410.2.3.1.3)
- DOORS, BATH & SHOWER ENCLOSURES, AND SLIDING GLASS DOORS CONTAINING GLAZING MATERIAL GREATER THAN 9 SQ. FT. IN SURFACE AREA SHALL BE CLASSIFIED AS CATEGORY II GLAZING PRODUCT. (R4410.2.3.1.3)

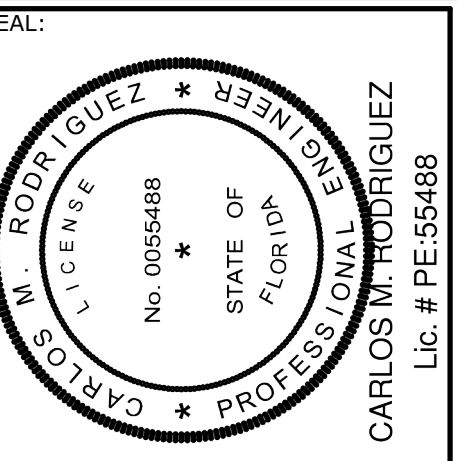


**BATHROOM MODIFICATIONS**  
**GREEN VIEW HOTEL**  
 1671 WASHINGTON AVE MIAMI BEACH

DRAWING BY: EL  
 PHASE: CONST. DOCS.  
 PROJECT NO.: 00.00

**R** RODRIGUEZ & ANGLIN  
 PROFESSIONAL DESIGN  
 12735 SW 42 TERRACE  
 MIAMI, FL 33175  
 MECHANICAL, PLUMBING,  
 ELECTRICAL & FIRE PROTECTION.  
 TEL: 305.222.4655  
 FAX: 305.222.4655  
 crr\_rapaz@vahoo.com

MARK	DATE	DESCRIPTION

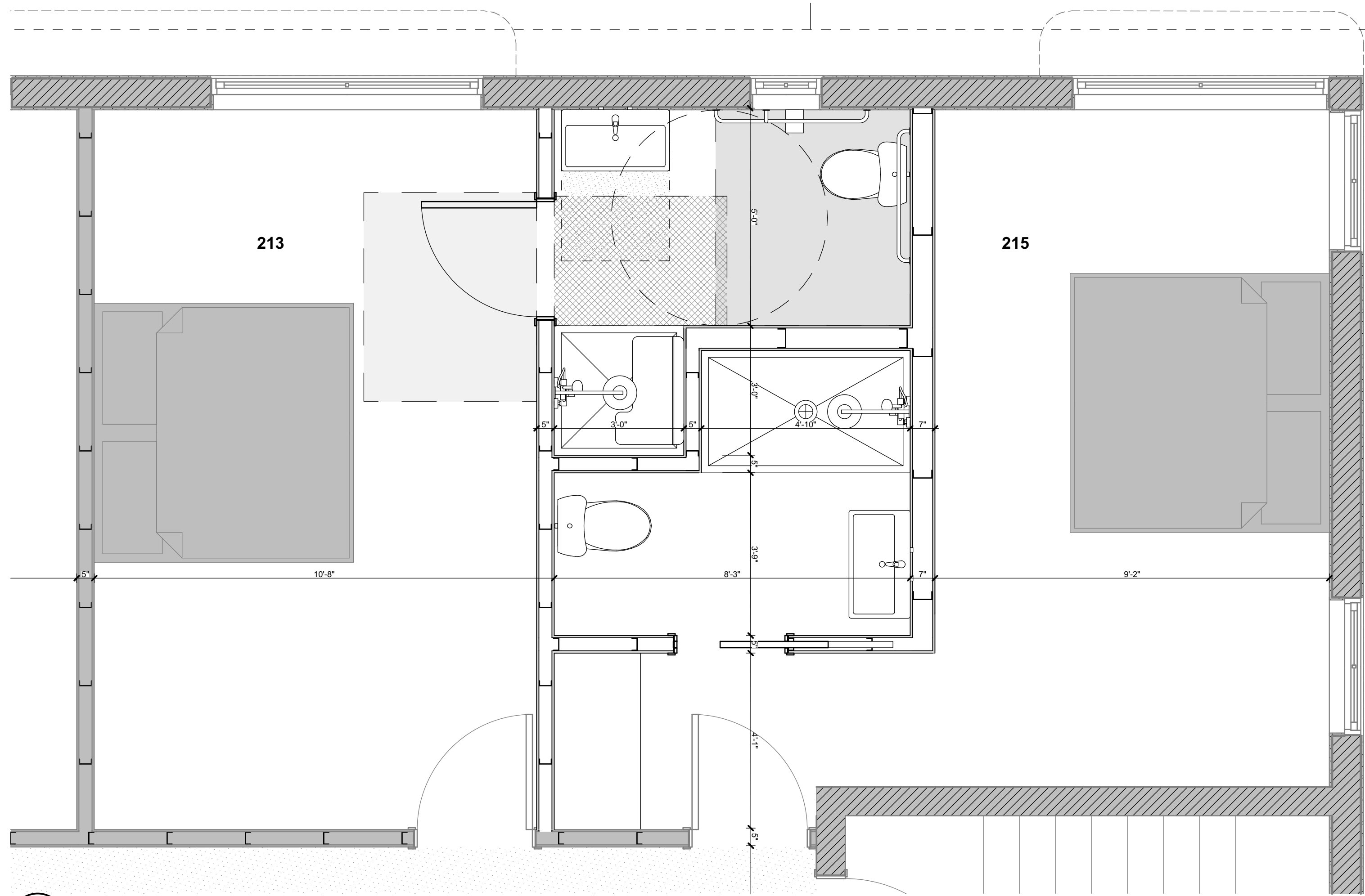


# PROPOSAL SECOND FLOOR

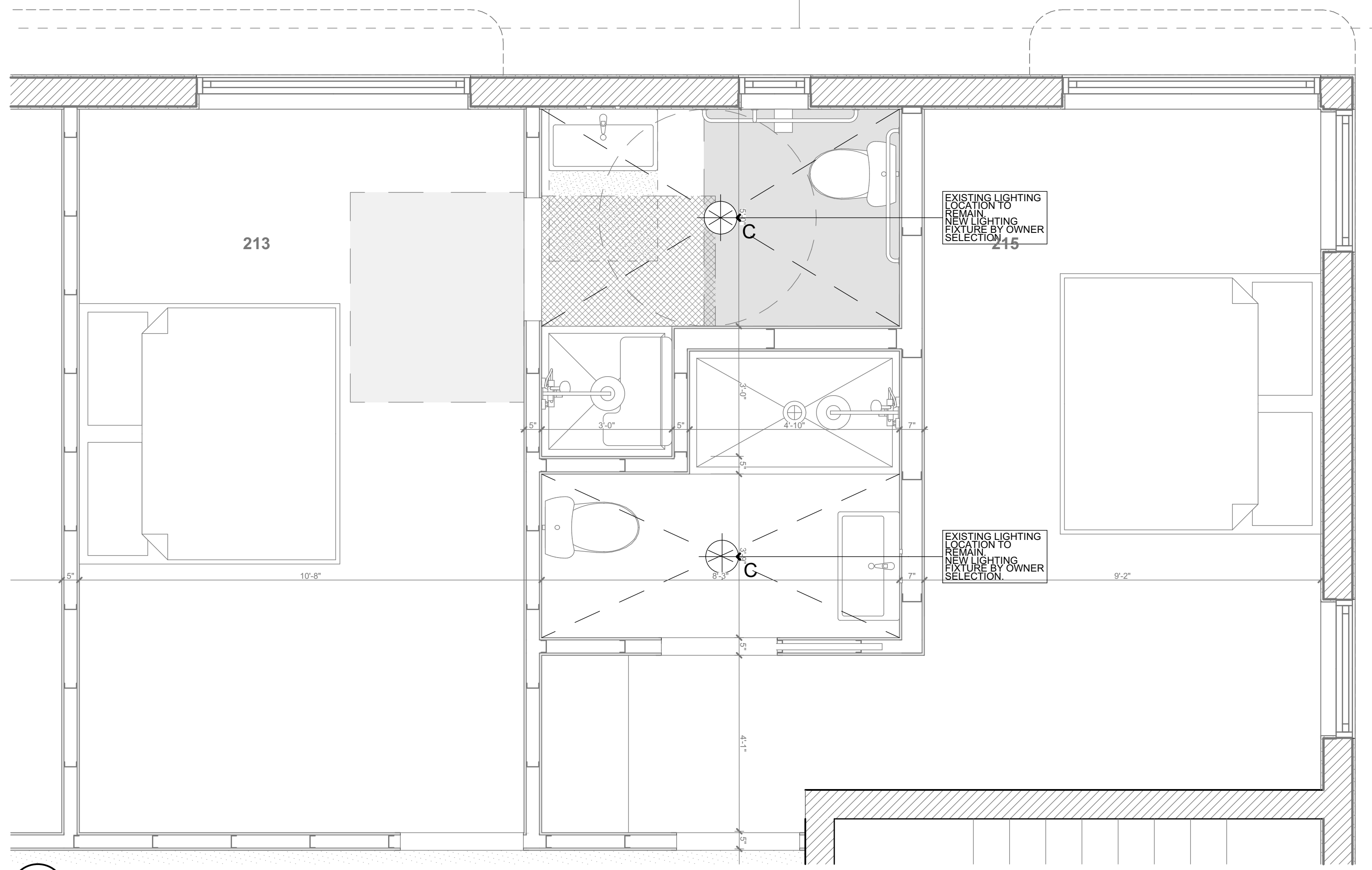
## A104

10/30/2018





**1** TYPICAL ADA BATHROOM MODIFICATIONS  
1/2" = 1'-0"



**2** TYPICAL ADA BATHROOM MODIFICATIONS  
1/2" = 1'-0"

**ADA NOTES:**

**GRAB BARS:**

**604.5.1 SIDE WALL.**

THE SIDE WALL GRAB BAR SHALL BE 42 INCHES (1065 MM) LONG MINIMUM, LOCATED 12 INCHES (305 MM) MAXIMUM FROM THE REAR WALL AND EXTENDING 54 INCHES (1370 MM) MINIMUM FROM THE REAR WALL.

**604.5.2 REAR WALL.**

THE REAR WALL GRAB BAR SHALL BE 36 INCHES (915 MM) LONG MINIMUM AND EXTEND FROM THE CENTERLINE OF THE WATER CLOSET 12 INCHES (305 MM) MINIMUM ON ONE SIDE AND 24 INCHES (610 MM) MINIMUM ON THE OTHER SIDE.

**604.6 FLUSH CONTROLS.**

FLUSH CONTROLS SHALL BE HAND OPERATED OR AUTOMATIC. HAND OPERATED FLUSH CONTROLS SHALL COMPLY WITH 309. FLUSH CONTROLS SHALL BE LOCATED ON THE OPEN SIDE OF THE WATER CLOSET EXCEPT IN AMBULATORY ACCESSIBLE COMPARTMENTS COMPLYING WITH 604.8.2.

**604.7 DISPENSERS.**

TOILET PAPER DISPENSERS SHALL COMPLY WITH 309.4 AND SHALL BE 7 INCHES (180 MM) MINIMUM AND 9 INCHES (230 MM) MAXIMUM IN FRONT OF THE WATER CLOSET MEASURED TO THE CENTERLINE OF THE DISPENSER. THE OUTLET OF THE DISPENSER SHALL BE 15 INCHES (380 MM) MINIMUM AND 48 INCHES (1220 MM) MAXIMUM ABOVE THE FINISH FLOOR AND SHALL NOT BE LOCATED BEHIND GRAB BARS. DISPENSERS SHALL NOT BE OF A TYPE THAT CONTROLS DELIVERY OR THAT DOES NOT ALLOW CONTINUOUS PAPER FLOW.

**LAVATORIES AND SINK:**

**606.3 HEIGHT.** LAVATORIES AND SINKS SHALL BE INSTALLED WITH THE FRONT OF THE HIGHER OF THE RIM OR COUNTER SURFACE 34 INCHES (865 MM) MAXIMUM ABOVE THE FINISH FLOOR OR GROUND.

**EXCEPTIONS:**

1. A LAVATORY IN A TOILET OR BATHING FACILITY FOR A SINGLE OCCUPANT ACCESSED ONLY THROUGH A PRIVATE OFFICE AND NOT FOR COMMON USE OR PUBLIC USE SHALL NOT BE REQUIRED TO COMPLY WITH 606.3.

2. IN RESIDENTIAL DWELLING UNIT KITCHENS, SINKS THAT ARE ADJUSTABLE TO VARIABLE HEIGHTS, 29 INCHES (735 MM) MINIMUM AND 36 INCHES (915 MM) MAXIMUM, SHALL BE PERMITTED WHERE ROUGH-IN PLUMBING PERMITS CONNECTIONS OF SUPPLY AND DRAIN PIPES FOR SINKS MOUNTED AT THE HEIGHT OF 29 INCHES (735 MM).

**FAUCETS:**

**606.4 FAUCETS:**

CONTROLS FOR FAUCETS SHALL COMPLY WITH 309. HAND-OPERATED METERING FAUCETS SHALL REMAIN OPEN FOR 10 SECONDS MINIMUM.

**606.5 EXPOSED PIPES AND SURFACES.**

WATER SUPPLY AND DRAIN PIPES UNDER LAVATORIES AND SINKS SHALL BE INSULATED OR OTHERWISE CONFIGURED TO PROTECT AGAINST CONTACT. THERE SHALL BE NO SHARP OR ABRASIVE SURFACES UNDER LAVATORIES AND SINKS.

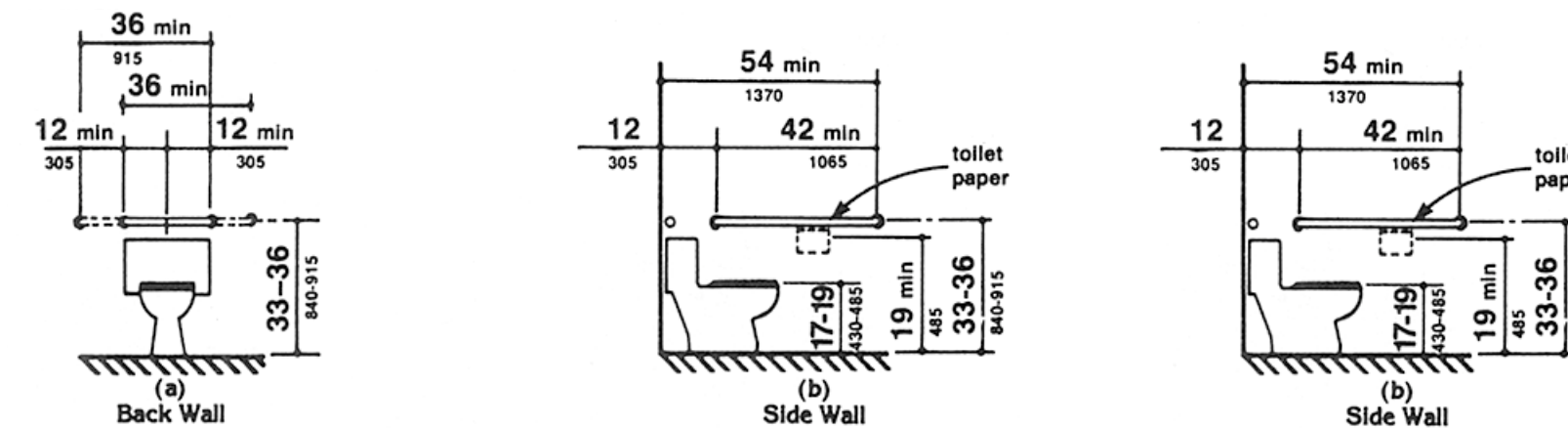
**TRANSFER SHOWERS:**

**608.2.1 TRANSFER TYPE SHOWER COMPARTMENTS.**

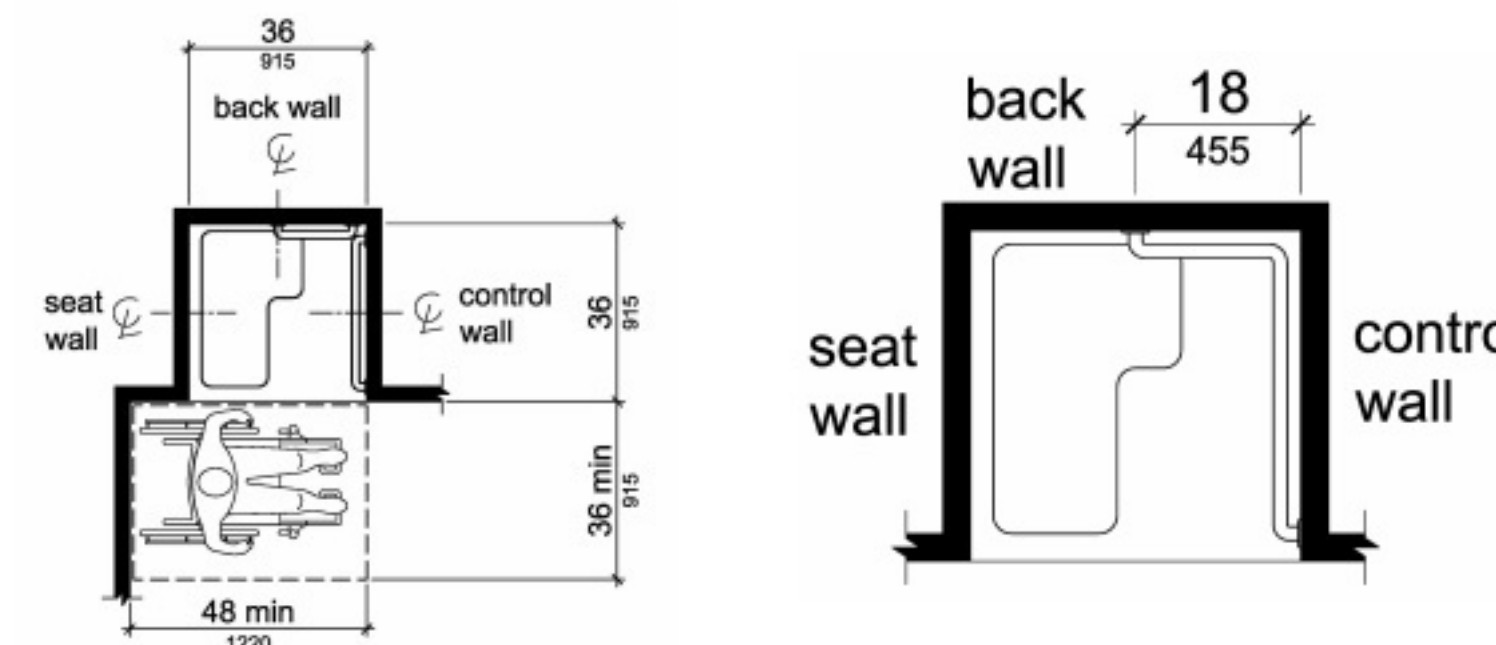
TRANSFER TYPE SHOWER COMPARTMENTS SHALL BE 36 INCHES (915 MM) BY 36 INCHES (915 MM) CLEAR INSIDE DIMENSIONS MEASURED AT THE CENTER POINTS OF OPPOSING SIDES AND SHALL HAVE A 36 INCH (915 MM) WIDE MINIMUM ENTRY ON THE FACE OF THE SHOWER COMPARTMENT. CLEARANCE OF 36 INCHES (915 MM) WIDE MINIMUM BY 48 INCHES (1220 MM) LONG MINIMUM MEASURED FROM THE CONTROL WALL SHALL BE PROVIDED.

**608.3.1 TRANSFER TYPE SHOWER COMPARTMENTS.**

IN TRANSFER TYPE COMPARTMENTS, GRAB BARS SHALL BE PROVIDED ACROSS THE CONTROL WALL AND BACK WALL TO A POINT 18 INCHES (455 MM) FROM THE CONTROL WALL.



**TOILET DETAILS**



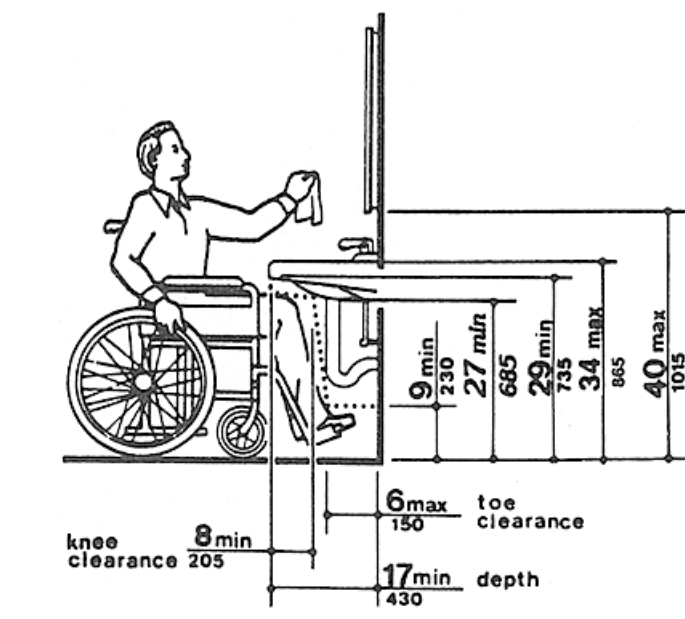
Note: Inside finished dimensions measured at the center points of opposing sides

**TRANSFER SHOWER DETAILS**

**REFLECTED CEILING NOTES**

**GENERAL:**

- C1 REFER TO GENERAL NOTES FOR FURTHER INFORMATION.
- C3 CONTRACTOR TO BRING TO ARCHITECT'S ATTENTION ANY DISCREPANCIES BETWEEN DRAWING SPECIFICATIONS AND FIELD CONDITIONS, PRIOR TO COMMENCEMENT OF WORK
- C4 PROTECT REMAINING CONDITIONS AS NECESSARY.
- C7 REPAIR AND/OR REPLACE BURNT OUT BULBS, BALLASTS, LIGHT FIXTURES, LAMPS, LENSES, ETC. AS NEEDED, TYP.
- C8 REMOVE AND SALVAGE LIGHT FIXTURES, LIFE SAFETY DEVICES AND ANY OTHER RELEVANT DEVICE FOR BUILDING STOCK.



**SINK AND LABATORY DETAILS**

**KEY NOTES:**

1. PROVIDE OR REPLACE WITH 5/8" M. R. BACKING BOARD AT BATHROOM AND SHOWER COMPARTMENT.
  2. ALL FLOOR AND WALLS TO BE, MINIMUM STC RATING OF 50.
  3. THE GLAZING IN SLIDING AND SWINGING DOOR AND IN SHOWER TO TUB ENCLOSURES, INCLUDING ANY GLAZING WITHIN 60 INCHES OF THE FINISHED FLOOR SURFACE IN WALLS SURROUNDING ANY TUB OR SHOWER ENCLOSURE, SHALL BE CAT II SAFETY GLAZING PRODUCT. (R4410.2.6.2 SAFEGUARDS).
  4. ALL NEW INTERIOR UNITS FINISHES SHALL COMPLY WITH APPLICABLE SECTIONS OF FBC 2017 CHAPTER 8. ALL SELECTED INTERIOR DESIGN FINISHES WITHIN UNITS SHALL BE CLASS "C" RATING IN ACCORDANCE WITH CHAPTER 8.
  5. ALL INTERIOR FINISHES SHALL COMPLY WITH NPPA 101, SECTION 10.2.2. GLAZING IN SLIDING AND IN SWINGING DOOR SHALL BE SAFETY-GLAZING COMPLYING WITH SAFETY STANDARD FOR ARCHITECTURAL GLAZING MATERIALS, CONSUMER PRODUCT SAFETY (R4410.2.3.1.3)
- DOORS, BATH & SHOWER ENCLOSURES, AND SLIDING GLASS DOORS CONTAINING GLAZING MATERIAL GREATER THAN 9 SQ. FT. IN SURFACE AREA SHALL BE CLASSIFIED AS CATEGORY II GLAZING PRODUCT. (R4410.2.3.1.3)

**FIRE NOTE:**

1. ALL EGRESS SHALL BE MAINTAINED FREE AND CLEAR AT ALL LL TIMES.

**APPLICABLE CODES:**

- 2017 FBC
- 2014 FFPC (5TH EDITION)
- 2012 NFPA 101 LIFE SAFETY CODE

**BATHROOM MODIFICATIONS  
GREEN VIEW HOTEL**

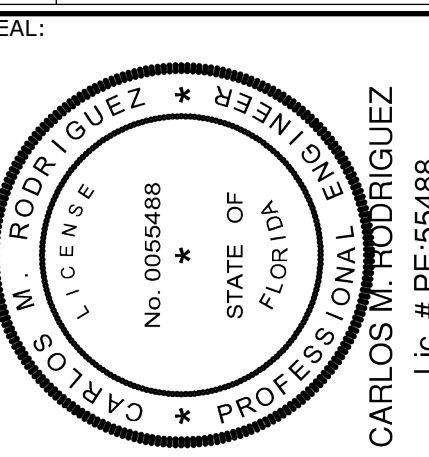
1671 WASHINGTON AVE MIAMI BEACH



**RODRIGUEZ & ANGLIN**  
PROFESSIONAL DESIGN  
12735 SW 42 TERRACE  
MIAMI, FL 33175  
MECHANICAL, PLUMBING,  
ELECTRICAL & FIRE PROTECTION.  
TEL: 305.232.6555  
FAX: 305.232.6555  
cmr\_rapad@roa.com

**CONSULTANTS**

MARK	DATE	DESCRIPTION



**NEW BATHROOM MODIFICATION TYPE B (ACCESSIBILITY) A108**