

241 77 STREET

Issued for Permitting  
241 77 Street  
Miami Beach, FL 33141



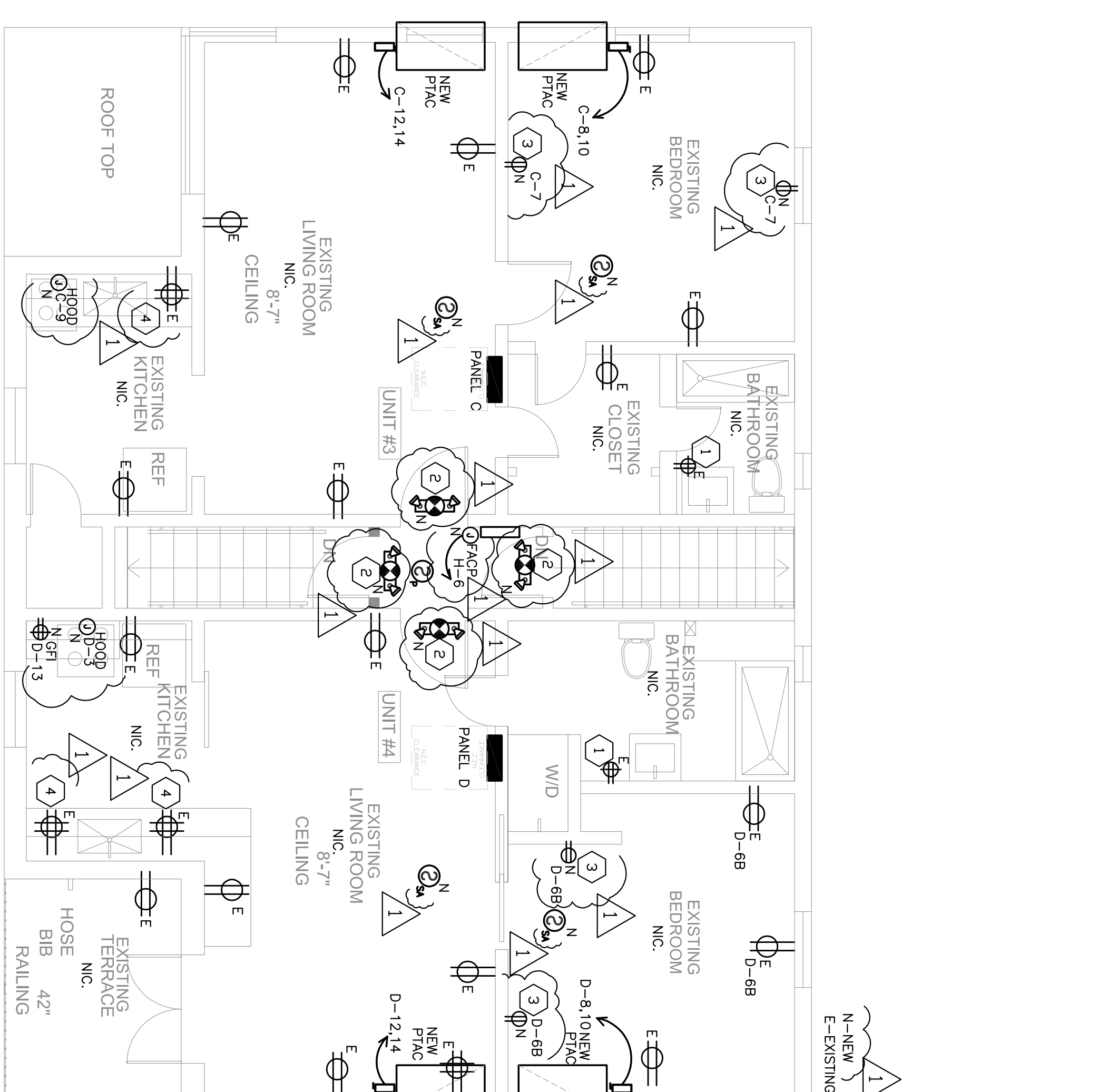
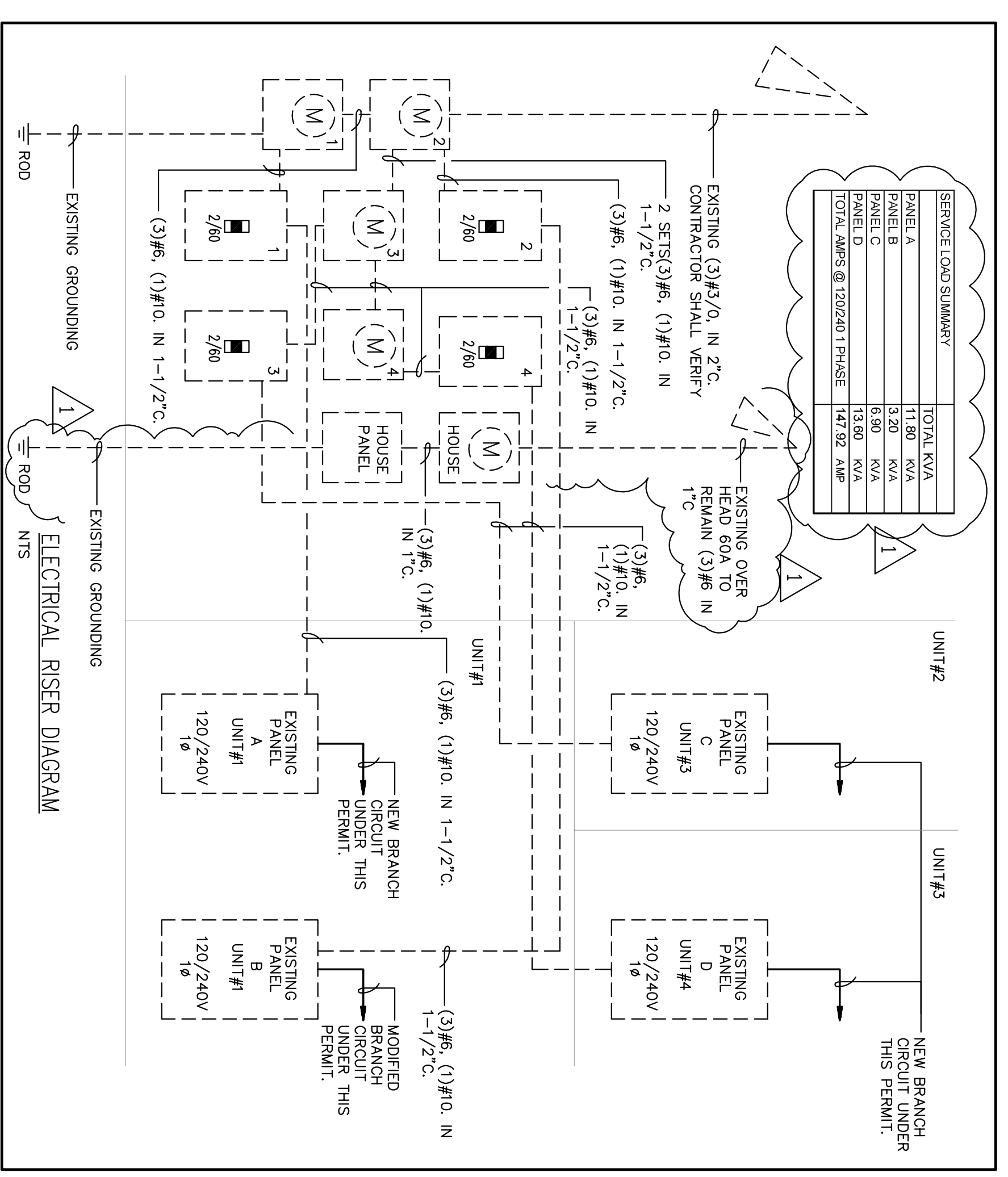
407 LINCOLN ROAD, SUITE 2C  
MIAMI BEACH, FL 33139  
Tel: 786.218.5335  
License #AA 26002467  
WWW.CASTELLANOSDESIGN.COM

No. DATE ISSUED / REVISED  
1 17 FEBRUIS PERMITTING  
12-03-15 RIC 1

ALL WORKMANSHIP, MATERIAL, CONSTRUCTION, FINISHES, ETC. SHALL BE THE PROPERTY OF CASTELLANOS DESIGN STUDIO, LLC. AND MAY NOT BE REPRODUCED OR TRANSMITTED IN ANY FORM OR BY ANY MEANS, WITHOUT THE WRITTEN PERMISSION OF CASTELLANOS DESIGN STUDIO, LLC. THE CONTRACTOR SHALL BE RESPONSIBLE FOR THE PROTECTION AND MAINTENANCE OF ALL UTILITIES AND STRUCTURES EXISTING ON THE SITE. THE CONTRACTOR SHALL BE RESPONSIBLE FOR THE PROTECTION AND MAINTENANCE OF ALL UTILITIES AND STRUCTURES EXISTING ON THE SITE. THE CONTRACTOR SHALL BE RESPONSIBLE FOR THE PROTECTION AND MAINTENANCE OF ALL UTILITIES AND STRUCTURES EXISTING ON THE SITE. THE CONTRACTOR SHALL BE RESPONSIBLE FOR THE PROTECTION AND MAINTENANCE OF ALL UTILITIES AND STRUCTURES EXISTING ON THE SITE.

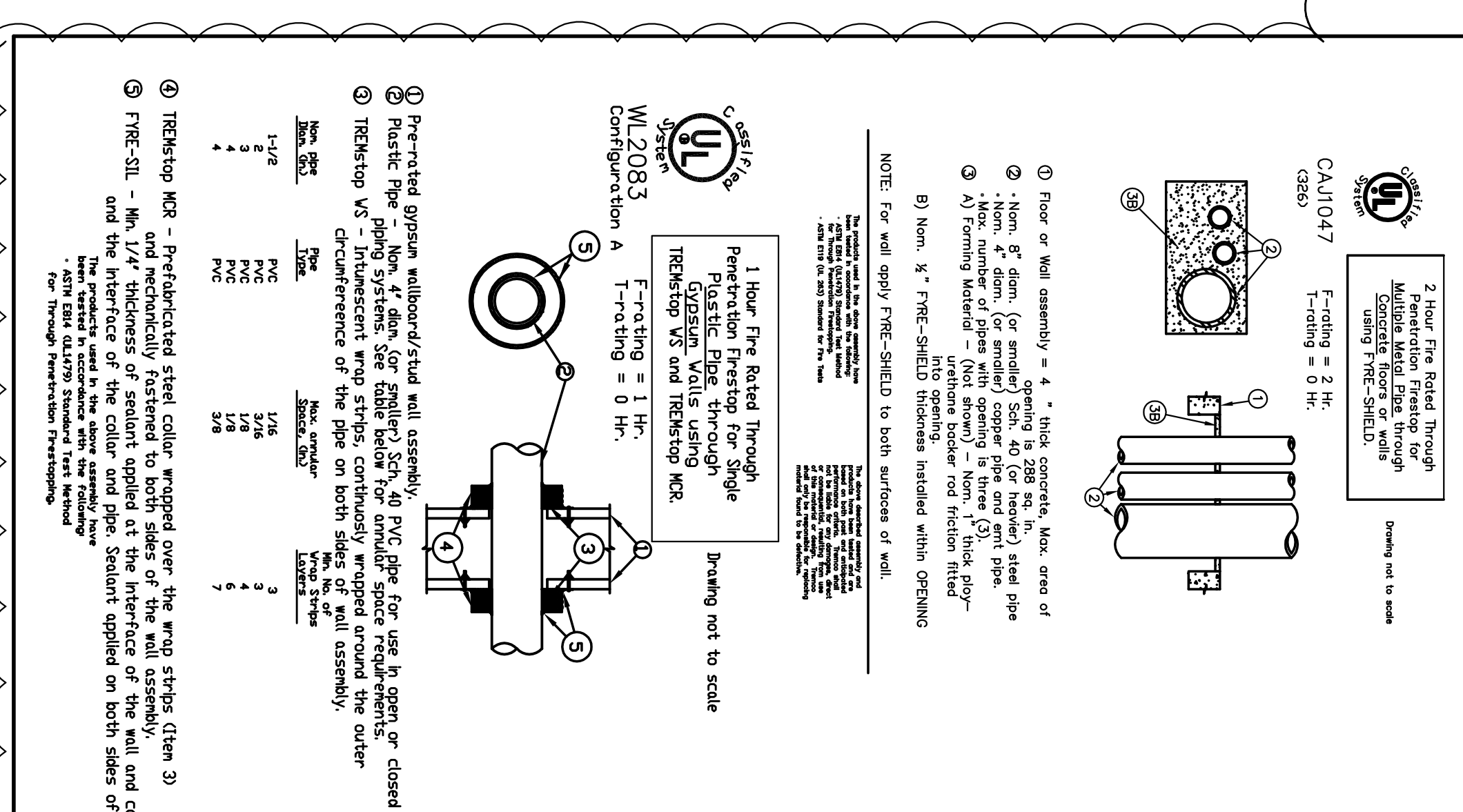
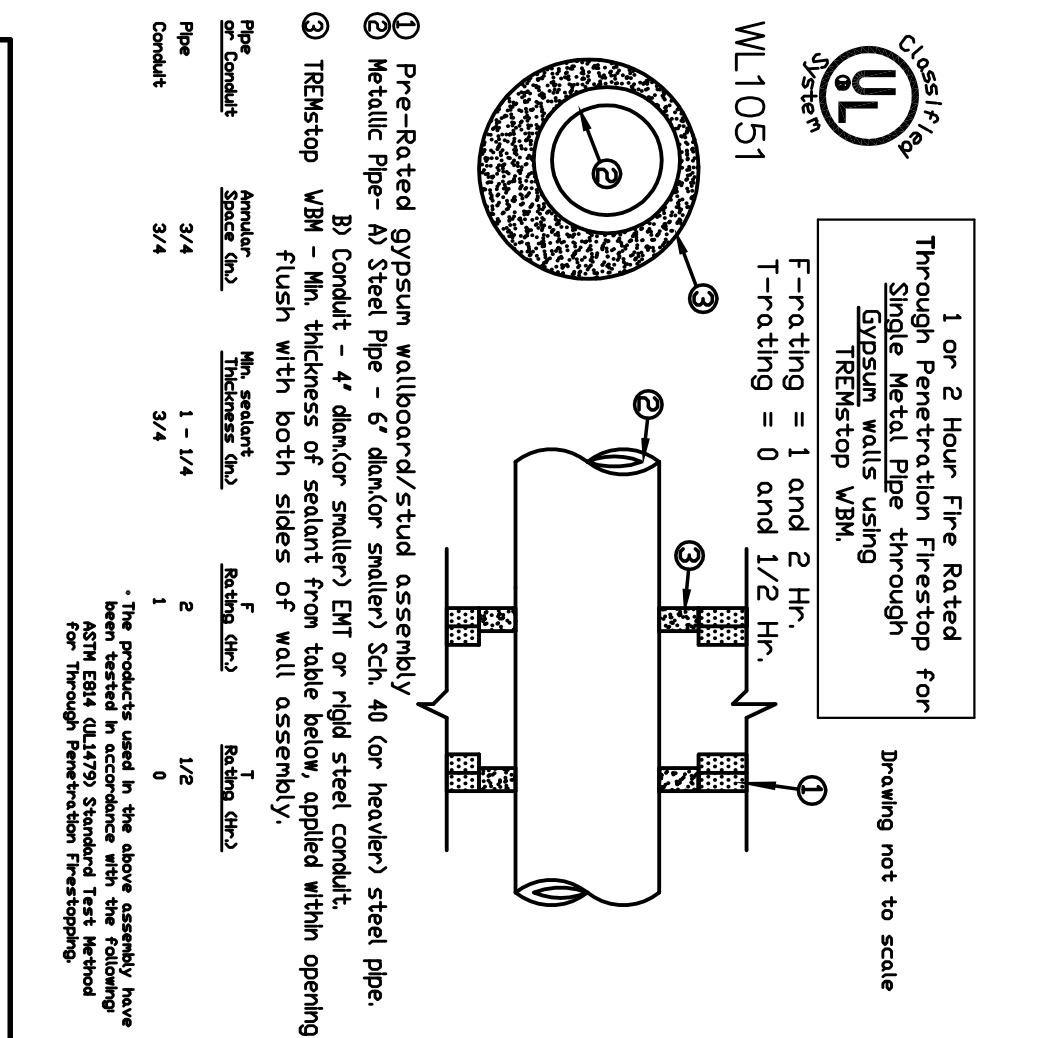
VENUSKY ART CASTELLANOS  
FLORIDA ARCHITECT LICENSE #AN 99133  
PROJECT NO.: 2014-32  
SEAL:

ELECTRICAL FLOOR PLAN  
E-1.1



- CONSTRUCTION NOTES:**
- CONTRACTOR SHALL VERIFY BATHROOM RECEPTACLES ARE GFCI GROUND FAULT PROTECTED CB AND PROVIDE IF REQUIRED.
  - NEW EXIT EMERGENCY LIGHT COMBO WITH EMERGENCY BATTERY BACK UP 90 MINUTES MINIMUM BATTERY TO BE LISTED ON SECTION 210.02(A). HOWEVER THE MAXIMUM NUMBER OF OUTLETS SHALL BE LESS THAN MAXIMUM LISTED ON SECTION 210.02(A). CONTRACTOR SHALL VERIFY FURNITURE LAYOUT FOR CONVENIENCE USE.
  - CONTRACTOR SHALL VERIFY KITCHEN SHALL APP. ARE GFCI GROUND FAULT PROTECTED CB AND PROVIDE IF REQUIRED.
  - PHOTOELECTRIC SMOKE ALARM AND CARBON MONOXIDE COMBO, ADDRESSABLE.

**SCOPE OF WORK:**  
THIS IS AN EXISTING RESIDENTIAL APARTMENTS TO BE CONVERTED TO COMMERCIAL SUITE UNITS. THE SCOPE OF WORK ONLY INCLUDES NEW AC SYSTEM FOR SUITE 1, ON-PHASE FLOOR AND SUITE 3, #4 AT SECOND FLOOR, AND NEW EXIST EMERGENCY LIGHTS. ALL OTHER CONDITIONS ARE EXISTING TO REMAIN NOT PART OF THIS PERMIT.



1 GROUND FLOOR PLAN  
SCALE: 1/4" = 1'-0"

1 SECOND FLOOR PLAN  
SCALE: 1/4" = 1'-0"

**engineering inc**  
2605 International Plaza  
Suite 1109  
Coral Gables, Florida 33134  
Phone > 305.444.9899  
Fax > 305.444.9827  
www.engineering.com

Amantis Rodriguez, P.E.  
License Number 60256  
C.A. 2839

Signature \_\_\_\_\_  
Date \_\_\_\_\_

CHECKED BY: A.R.  
DRAWN BY: A.R.  
SCALE: AS NOTED  
© 2015 BY CDS