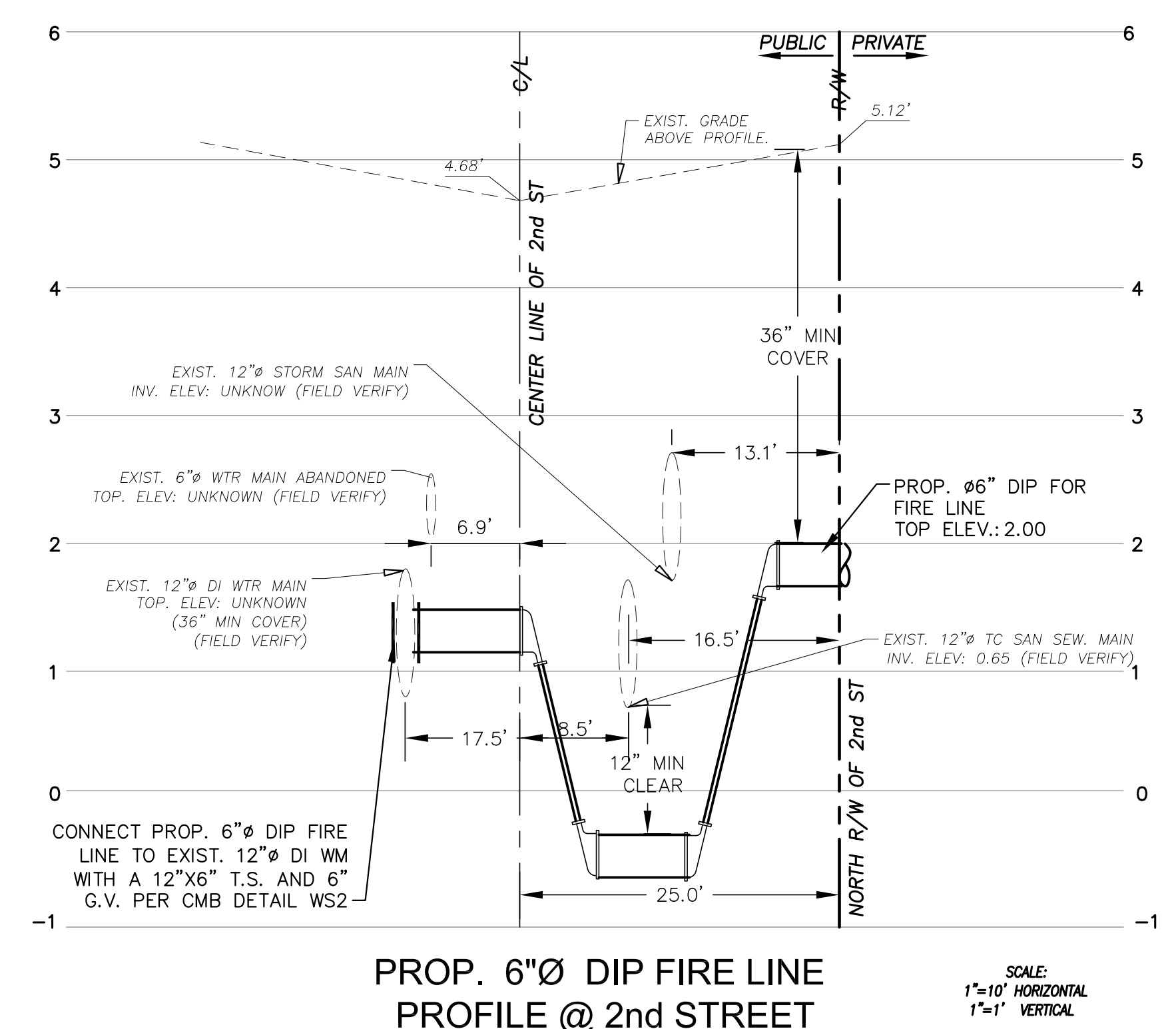
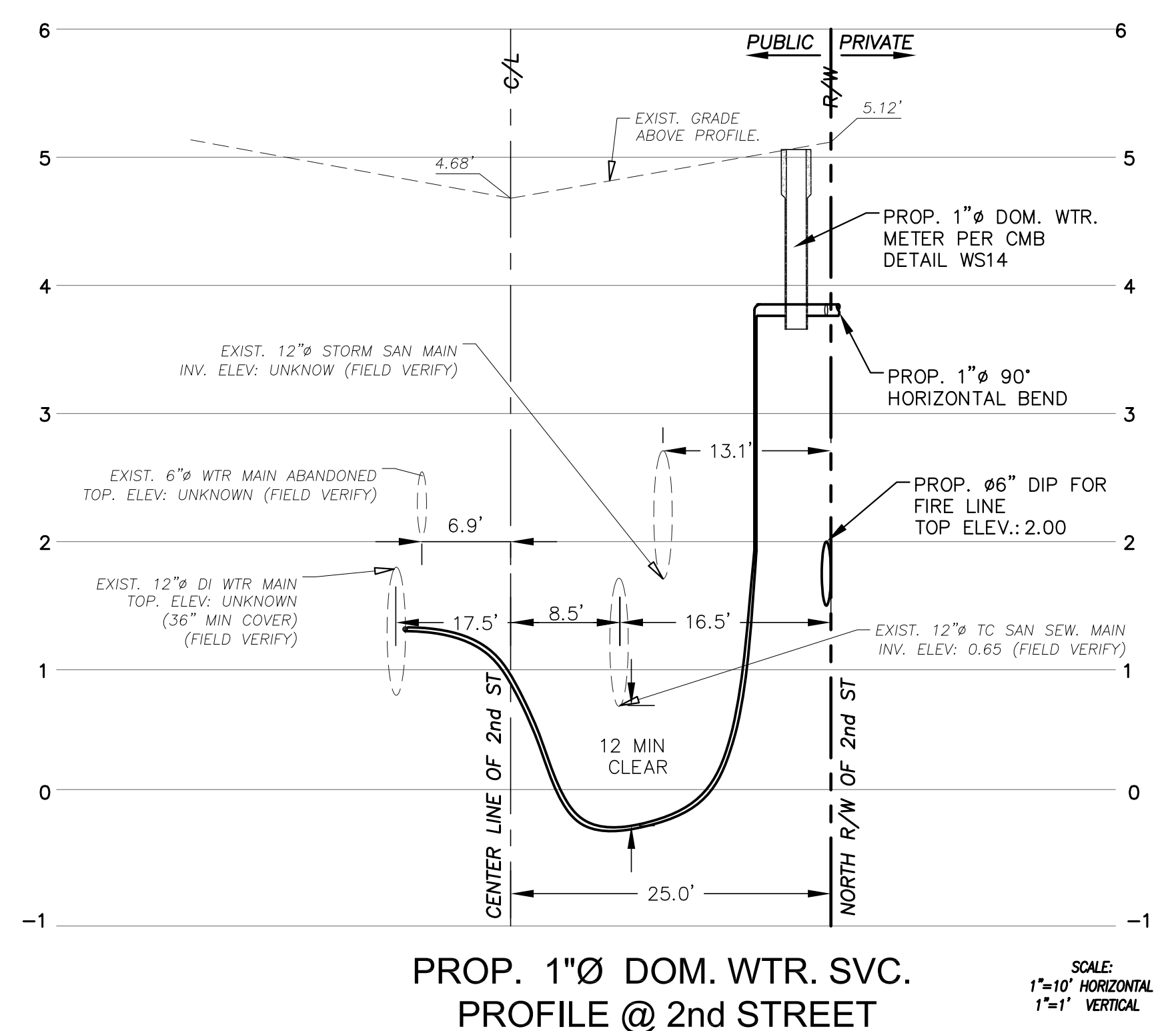
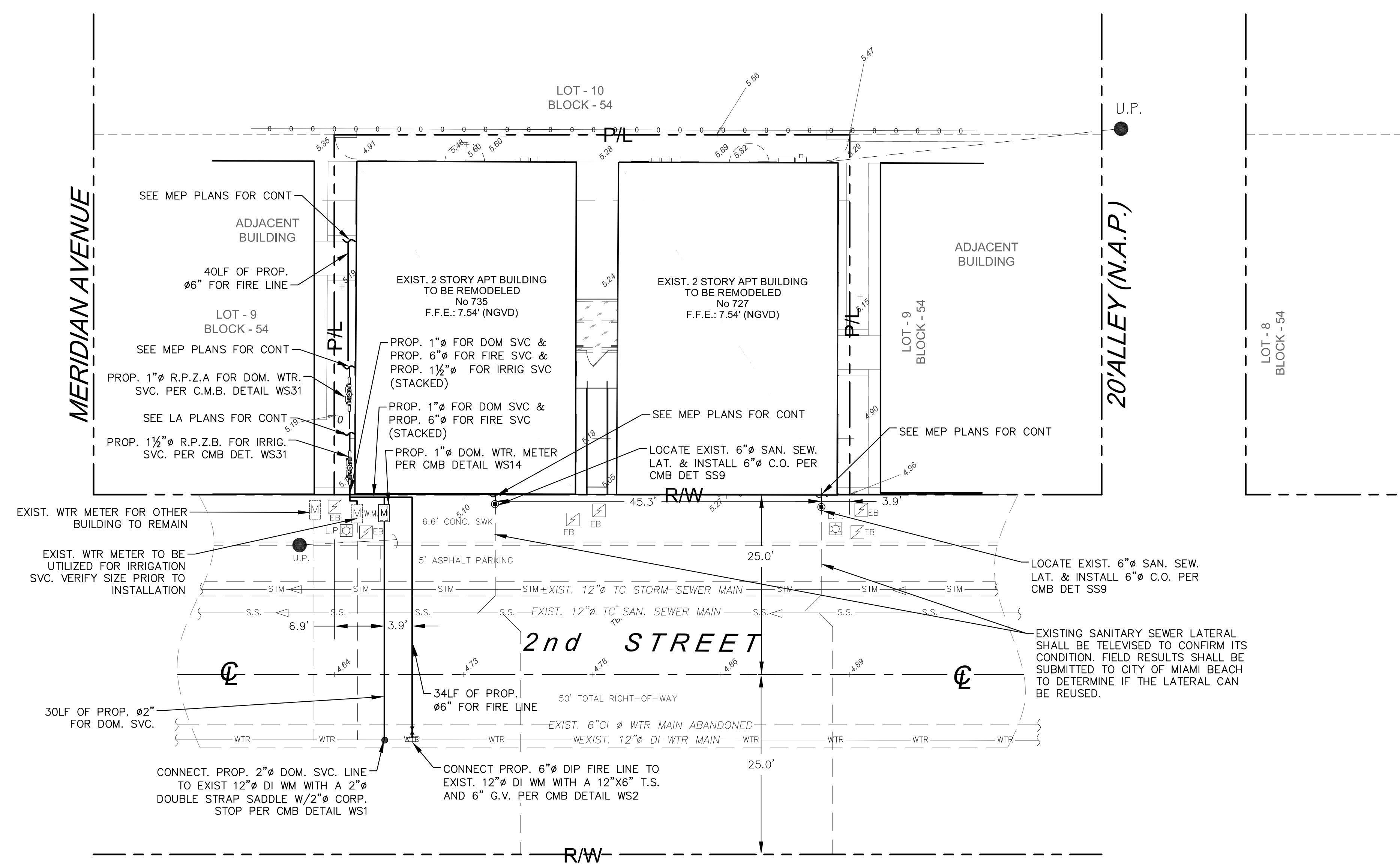


- LEGEND:**
- RAW— R/W LINE / PROPERTY LINE
 - C— CENTER LINE
 - M— MONUMENT LINE
 - EXISTING CURBING
 - 6.7' → EXISTING ELEVATIONS (NGVD)
 - x 6.7' → EXISTING ELEVATIONS (NGVD)

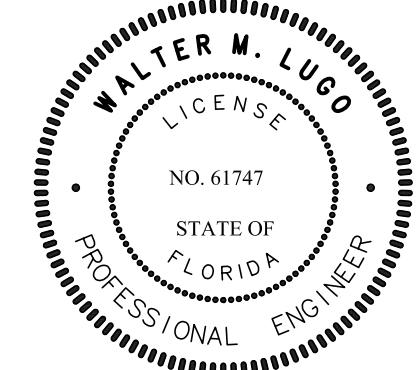


THE WEBER STUDIO
 104 CRANDON BLVD. SUITE 414
 A.A. 33409-0283
 KEY BISCAYNE, FLORIDA 33149
 www.weberstudio.com
 305.569.9555 / 305.561.5986

INTERIOR + EXTERIOR ALTERATIONS FOR:
 VILLA SOFI
 227 & 235 2ND STREET
 MIAMI BEACH, FL 33139

DATE:	05-23-2018
DRAWN BY:	
REVISION:	
DATE:	

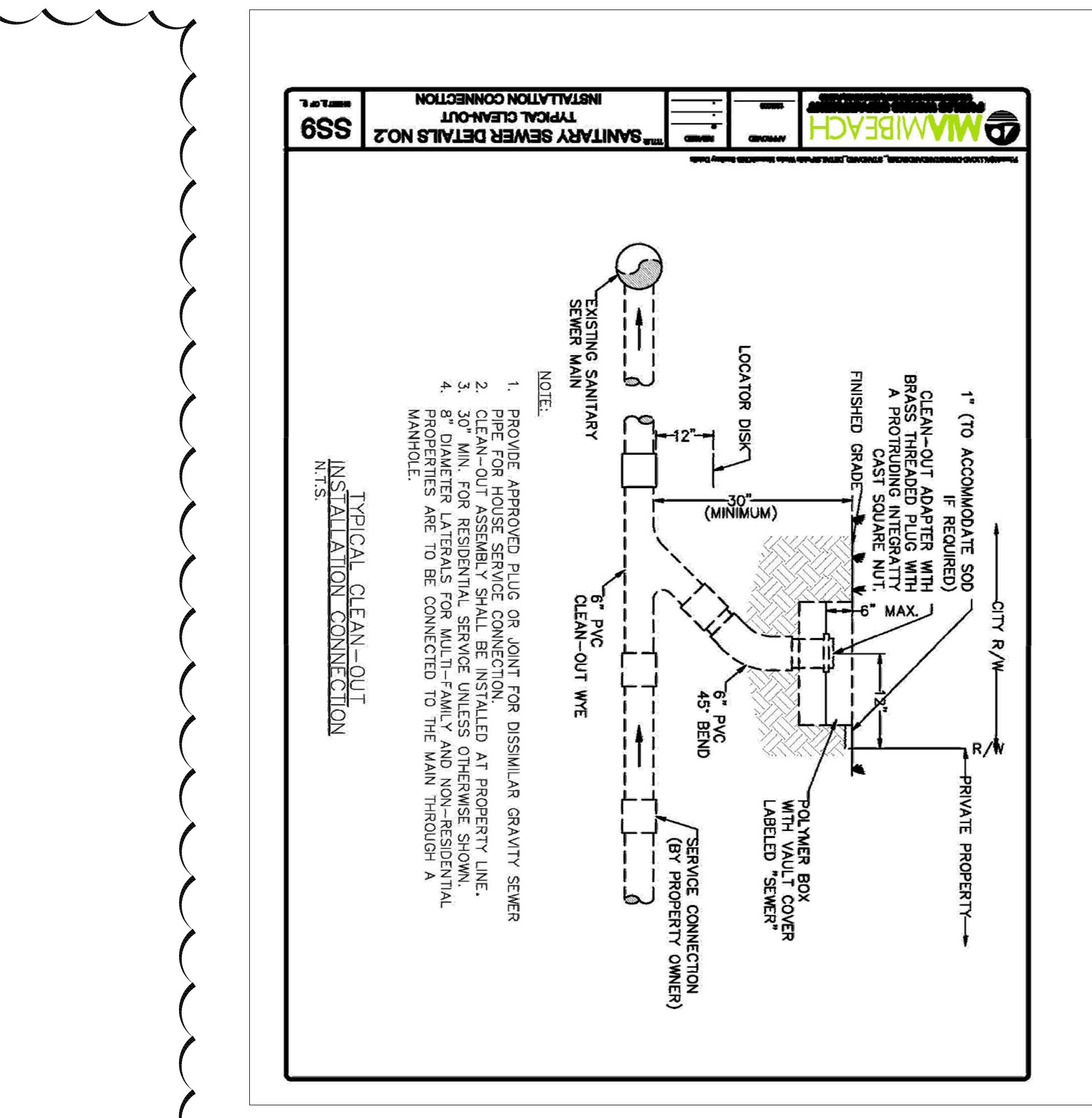
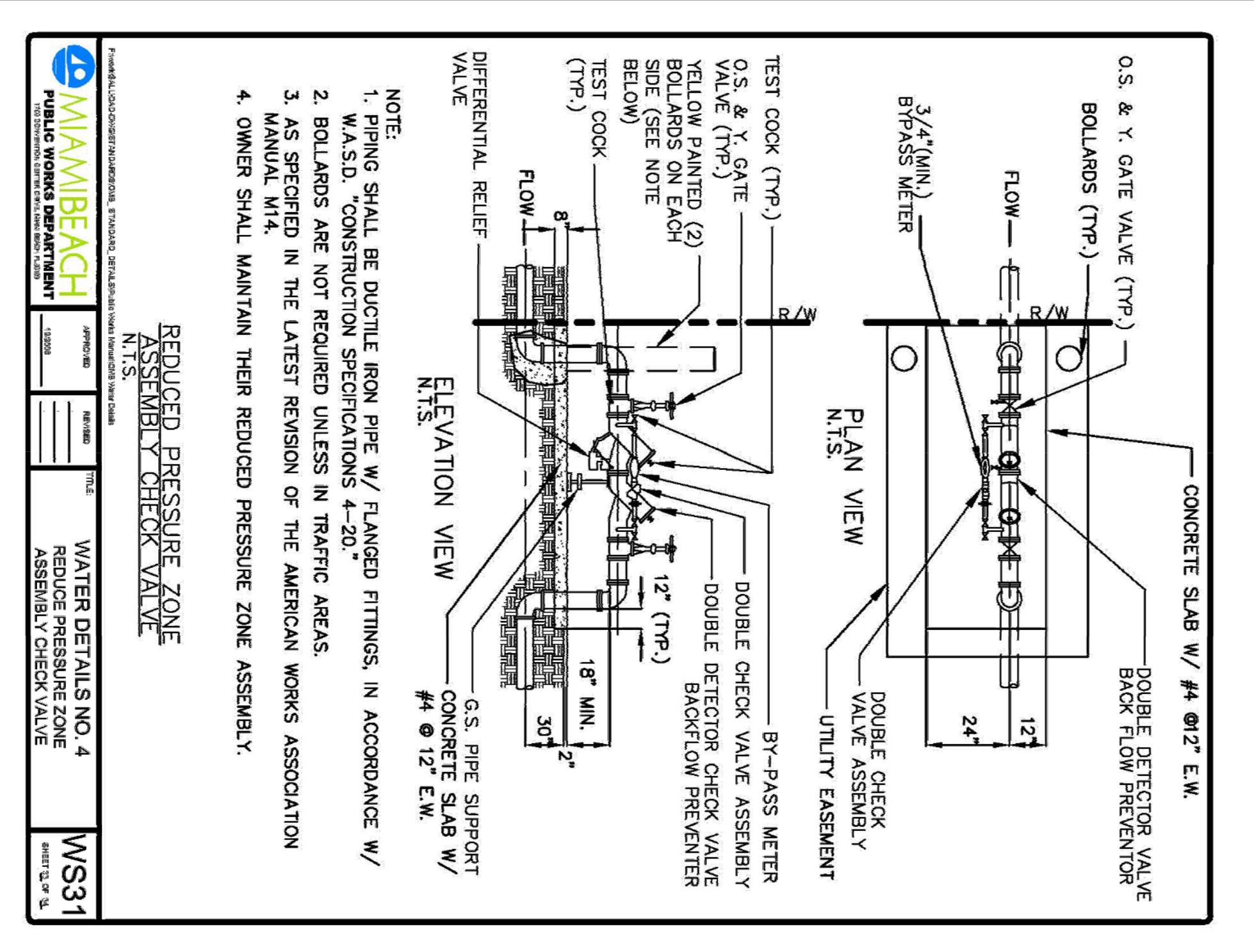
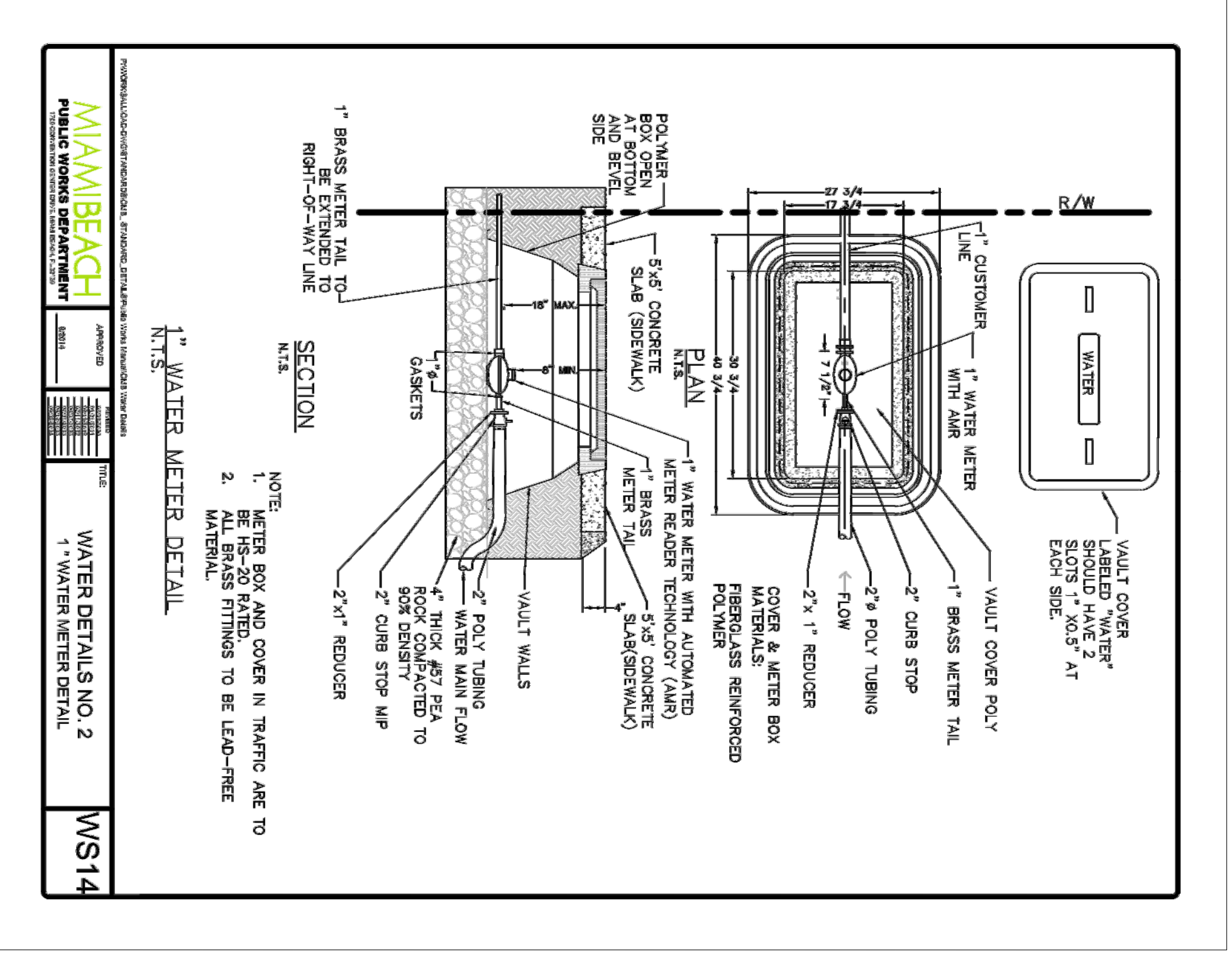
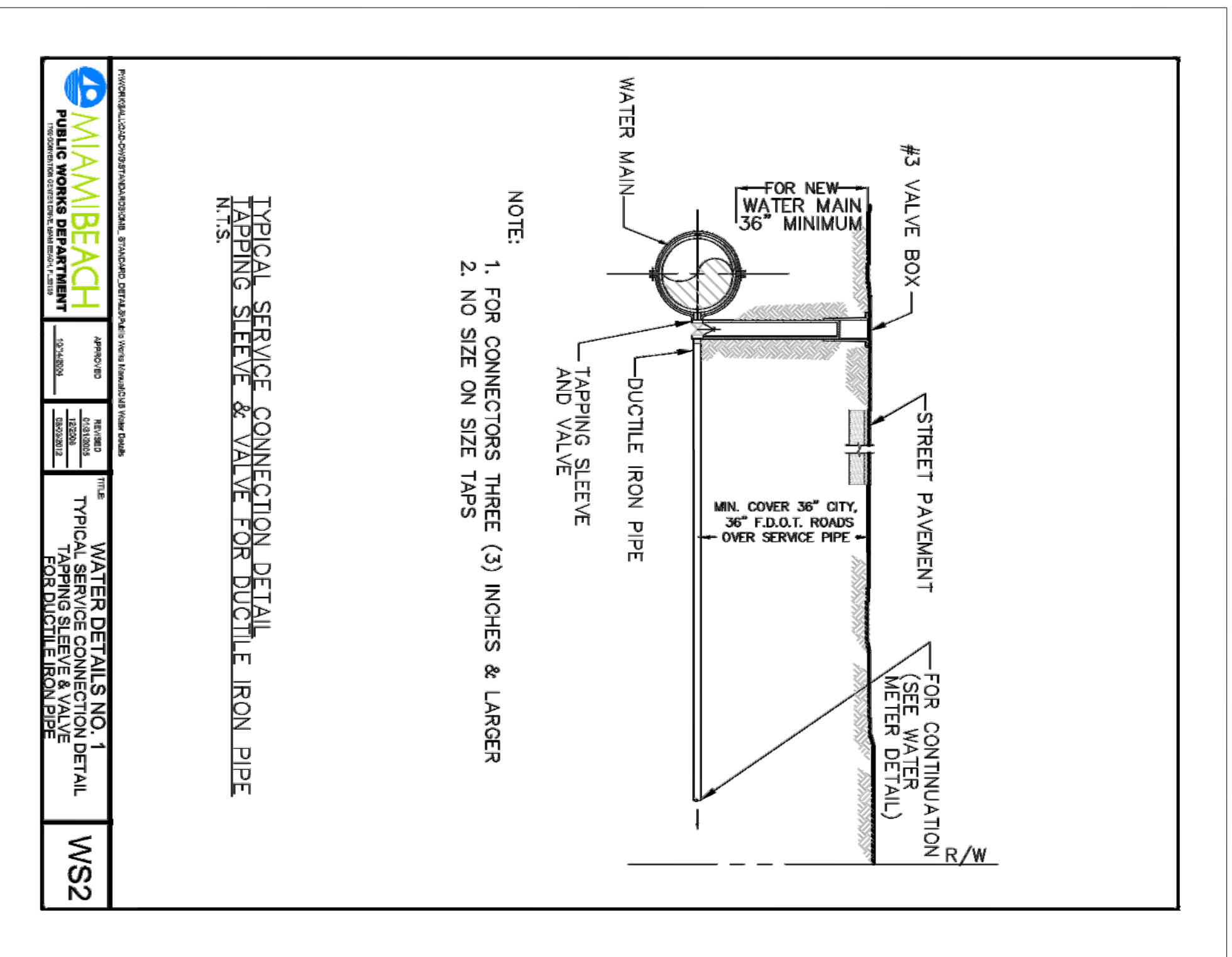
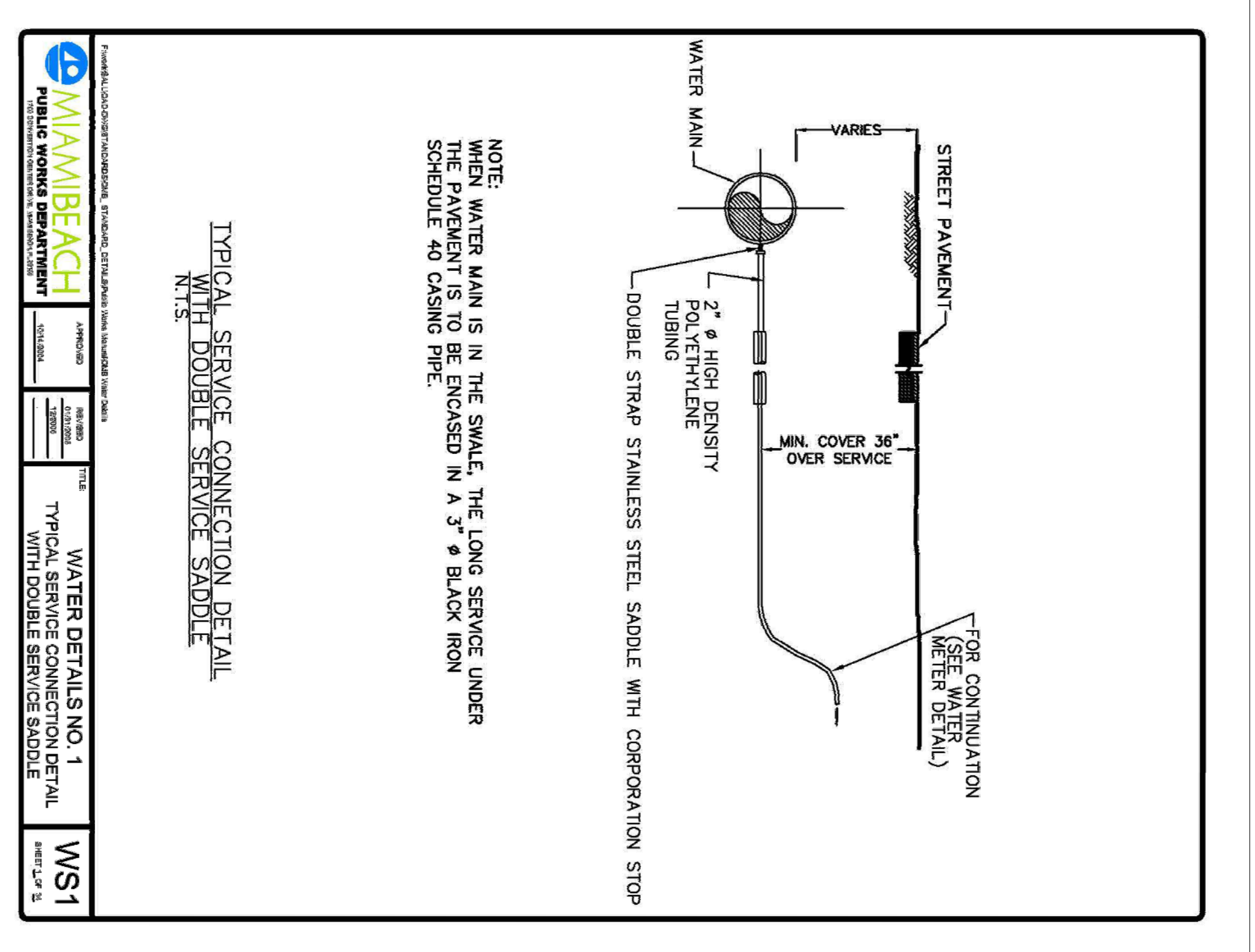
WATER AND SEWER PLAN AND PROFILE
C100



WALTER M. LUGO P.E.
FL PE# 61747

Sunshine811
 Call 811 or www.sunshine811.com two full business days before digging to have utilities located and marked.
 Check positive response codes before you dig!

OCEAN ENGINEERING
 CIVIL ENGINEERING CONSULTANTS
 811 UNIVERSITY BLVD. SUITE 100, MIAMI, FL 33139
 Phone: 305.369.9555 / 305.561.5986
 Fax: 305.369.9555



MIAMI BEACH PUBLIC WORKS DEPARTMENT
WATER DETAILS NO. 4
ASSEMBLY CHECK VALVE
WS31

MIAMI BEACH PUBLIC WORKS DEPARTMENT
WATER DETAILS NO. 1
TYPICAL SERVICE CONNECTION DETAIL FOR DUCTILE IRON PIPE
WS2

MIAMI BEACH PUBLIC WORKS DEPARTMENT
WATER DETAILS NO. 2
1" WATER METER DETAIL
WS14

sunshine
CALL 811 OR WWW.SUNSHINE811.COM FOR ALL BUSINESS DAYS BEFORE DIGGING TO AVOID UTILITIES. LOCATED AND MARKED. ONE-800-368-5848

OCEAN ENGINEERING CONSULTANTS
WALTER M. LUOGO P.E.
FL PE# 61747

NO. 61747
STATE OF FLORIDA
PROFESSIONAL ENGINEER

INTERIOR + EXTERIOR ALTERATIONS FOR:
VILLA SOFI
727 & 735 2ND STREET
MIAMI BEACH, FL 33139

THE WEBER STUDIO
AA26002025
104 CRANDON BLVD. SUITE 414
KEY BISCAYNE, FLORIDA 33149
www.weberstudiomiami.com
305.361.9935/305.361.9986

DATE: 05.23.2018
DRAWN BY: []
REVISION: []
DATE: []
SCALE: []
COMMENTS: []

WATER AND SEWER PLAN DETAILS
C101