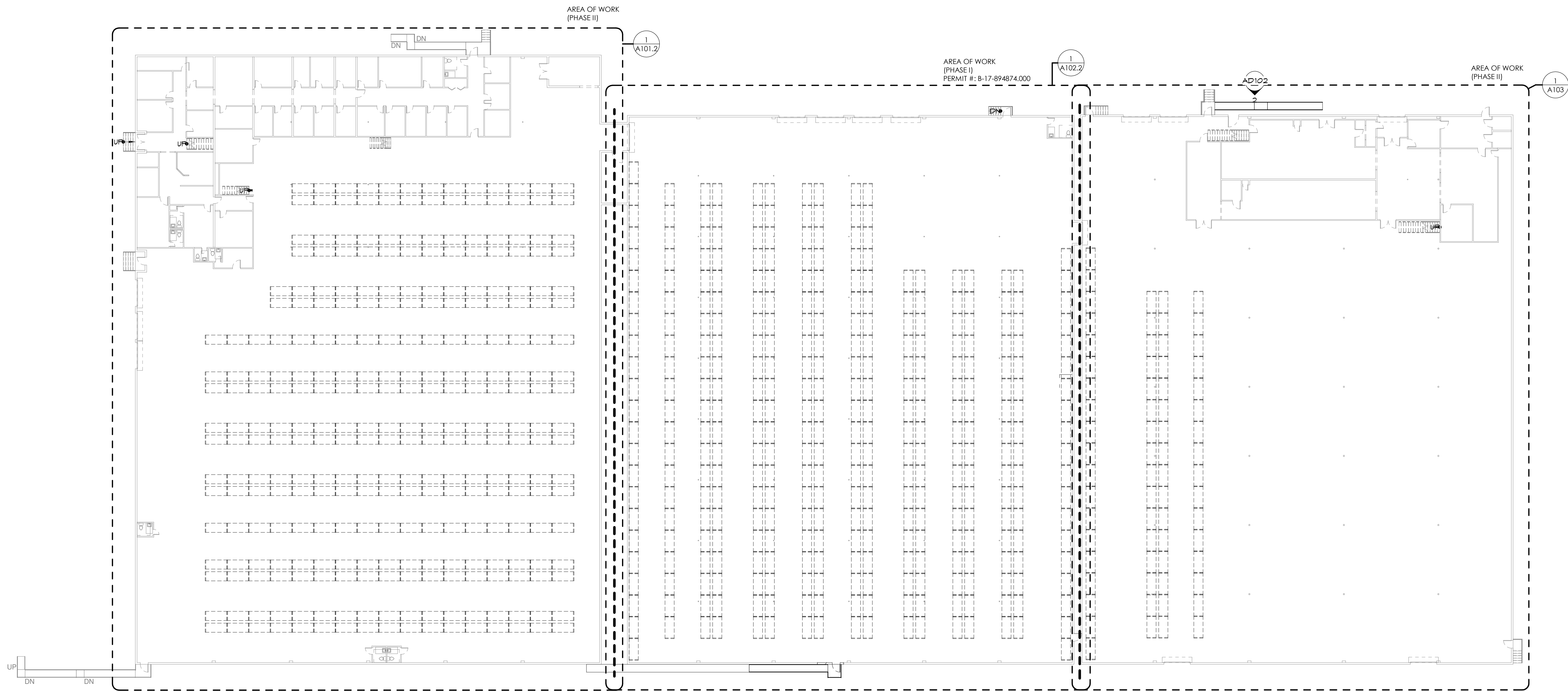
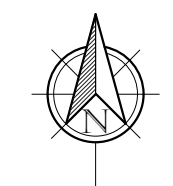


KEYNOTE LEGEND - ARCHITECTURE



① OVERALL
1" = 20'-0"



JAA ARCHITECTURE INC.
2716 ST. JOHN'S AVE
JACKSONVILLE FL 32205
P: (904) 379-5108
E: JOHN@JAAARCHITECTURE.COM
LIC. AR92748

THIS DOCUMENT, ALONG WITH ASSOCIATED DOCUMENTS, IS AN INSTRUMENT OF DESIGNER'S SERVICE FOR THE EXCLUSIVE USE AT THE PROJECT TITLED HEREIN. INFORMATION DERIVED FROM THIS DOCUMENT, AND/OR ASSOCIATED DOCUMENTS, MAY NOT BE USED FOR OTHER WORK(S) OR PROJECT(S) WITHOUT THE EXPRESS WRITTEN PERMISSION OF THE DESIGNER.

TENANT IMPROVEMENT (PHASE II)
BLDG. #01 & 03
4843 VICTOR ST
JACKSONVILLE, FL 32207

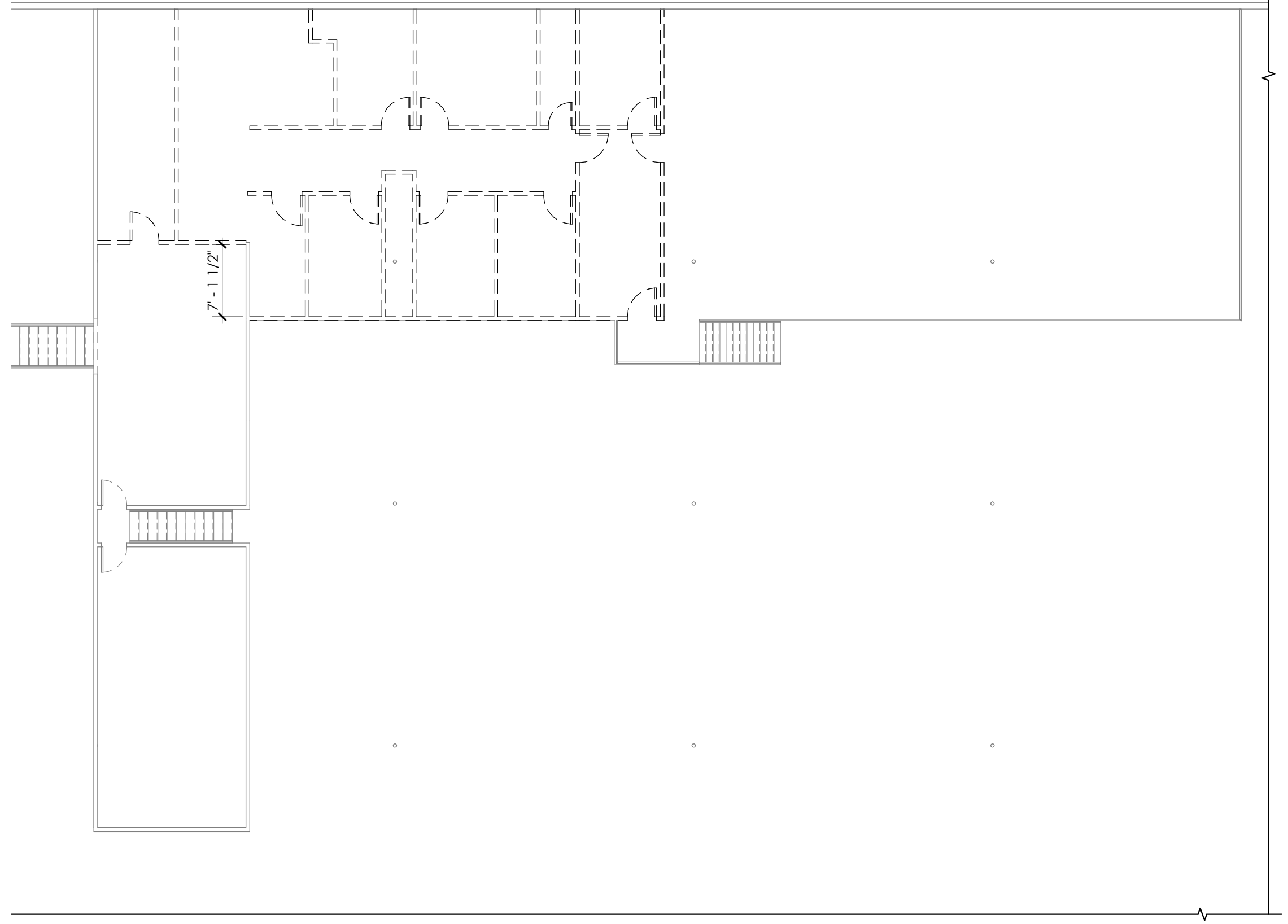
REVISIONS		
#	DATE	DESCRIPTION
1		
2		
3		
4		
5		
6		
7		



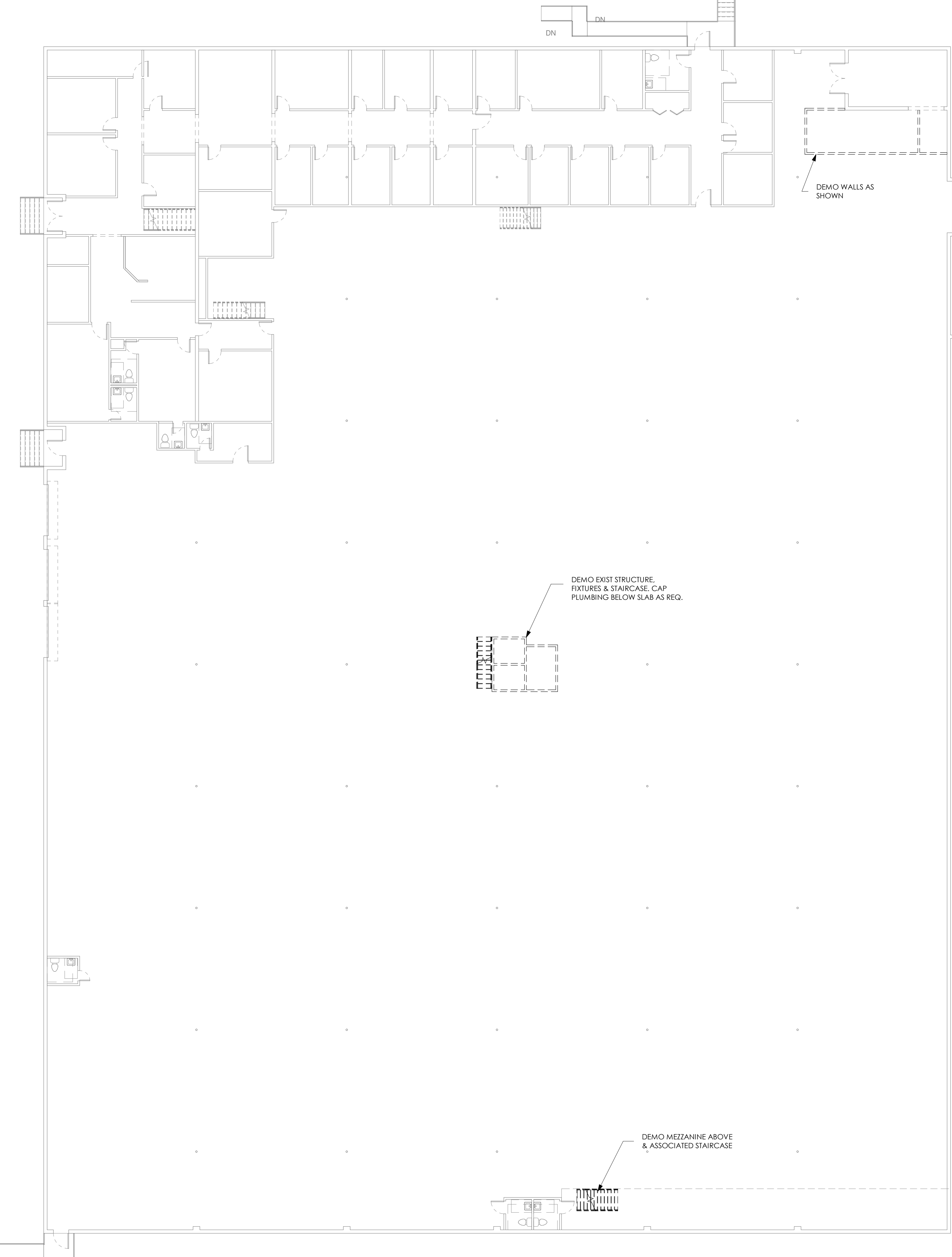
DATE: 9.4.2017

SHEET: OVERALL

A100.1



3 BUILDING (1) SECOND FLOOR DEMO
3/32" = 1'-0"



1 BUILDING (1) DEMO
3/32" = 1'-0"

GENERAL DEMOLITION NOTES

1. REMODELING AND/OR ALTERATIONS OF AN EXISTING BUILDING REQUIRES THAT CERTAIN ASSUMPTIONS BE MADE REGARDING EXISTING CONDITIONS, SOME WHICH MAY NOT BE VERIFIABLE WITH OUT DESTROYING OTHERWISE ADEQUATE OR SERVICEABLE PORTIONS OF THE BUILDING. THE ARCHITECT AND THE ARCHITECTS CONSULTANTS ARE NOT RESPONSIBLE FOR CONDITIONS DISCOVERED DURING CONSTRUCTION THAT DIFFER FROM THOSE INDICATED. THE CONTRACTOR, UPON MAKING SUCH A DISCOVERY, SHALL IMMEDIATELY NOTIFY THE ARCHITECT AND OBTAIN A CLARIFICATION PRIOR TO PROCEEDING WITH THE WORK IN QUESTION.
2. DURING THE DEMOLITION PHASE AND SUBSEQUENT NEW CONSTRUCTION, THE CONTRACTOR SHALL BE RESPONSIBLE FOR MAINTAINING ADEQUATE EMERGENCY EGRESS FROM THE BUILDING AT ALL TIMES. CONTRACTOR MUST IMPLEMENT INTERIM LIFE SAFETY MEASURES, PROVIDE REVISED EGRESS MAPS (IF REQUIRED), TRAIN EMPLOYEES AND/OR SUB-CONTRACTORS ON PROCEDURES THAT ARE AFFECTED, AND MAINTAIN FIRE WATCH WHEN REQUIRED DUE TO SYSTEM OUTAGE.
3. PATCH AND REPLACE DAMAGED CEILING AND TILES AS NECESSARY.
4. ITEMS TO BE RELOCATED OR DEMOLISHED ARE ILLUSTRATED AS DASHED LINES AND ARE NOTED. SEE DEMOLITION NOTES.
5. WHERE DOORS, WALLS, AND OTHER STRUCTURES ARE REMOVED, PATCH ADJACENT WALL AND FLOOR SURFACES TO MATCH THE EXISTING MATERIAL.
6. NEATLY CUT OPENINGS AND HOLES PLUMB, SQUARE, AND TRUE TO DIMENSIONS REQUIRED.
7. ITEMS INDICATED TO BE DEMOLISHED SHALL BE DISPOSED OF LEGALLY.
8. VERIFY IN FIELD OF ALL ITEMS ON EXTERIOR INCLUDING, BUT NOT LIMITING TO; CONDENSERS, LIGHTS, ELECTRICAL BOXES, ROOFTOP UNITS, WATER HEATERS AND WALL PENETRATIONS.
9. * INDICATES TO VERIFY IN FIELD CLOSEST ALIGNMENT TO BRICK UNITS.
10. ALL CHEMICALS USED ON EXISTING BRICK SURFACES MUST BE REVIEWED AND APPROVED BY OWNER BEFORE USE. GC AND OWNER TO COORDINATE w/ STRUCTURAL ENGINEER REGARDING CHEMICAL USE ON EXISTING BRICK BEFORE USE.



JAA ARCHITECTURE INC.
2716 ST. JOHN'S AVE
JACKSONVILLE FL 32205
P: (904) 379-5108
E: JOHN@JAAARCHITECTURE.COM
LIC. AR92748

THIS DOCUMENT, ALONG WITH ASSOCIATED DOCUMENTS, IS AN INSTRUMENT OF DESIGNER'S SERVICE FOR THE EXCLUSIVE USE AT THE PROJECT TITLED HEREIN. INFORMATION DERIVED FROM THIS DOCUMENT, AND/OR ASSOCIATED DOCUMENTS, MAY NOT BE USED FOR OTHER WORK(S) OR PROJECT(S) WITHOUT THE EXPRESS WRITTEN PERMISSION OF THE DESIGNER.

TENANT IMPROVEMENT (PHASE II)
BLDG. #01 & 03
4843 VICTOR ST
JACKSONVILLE, FL 32207

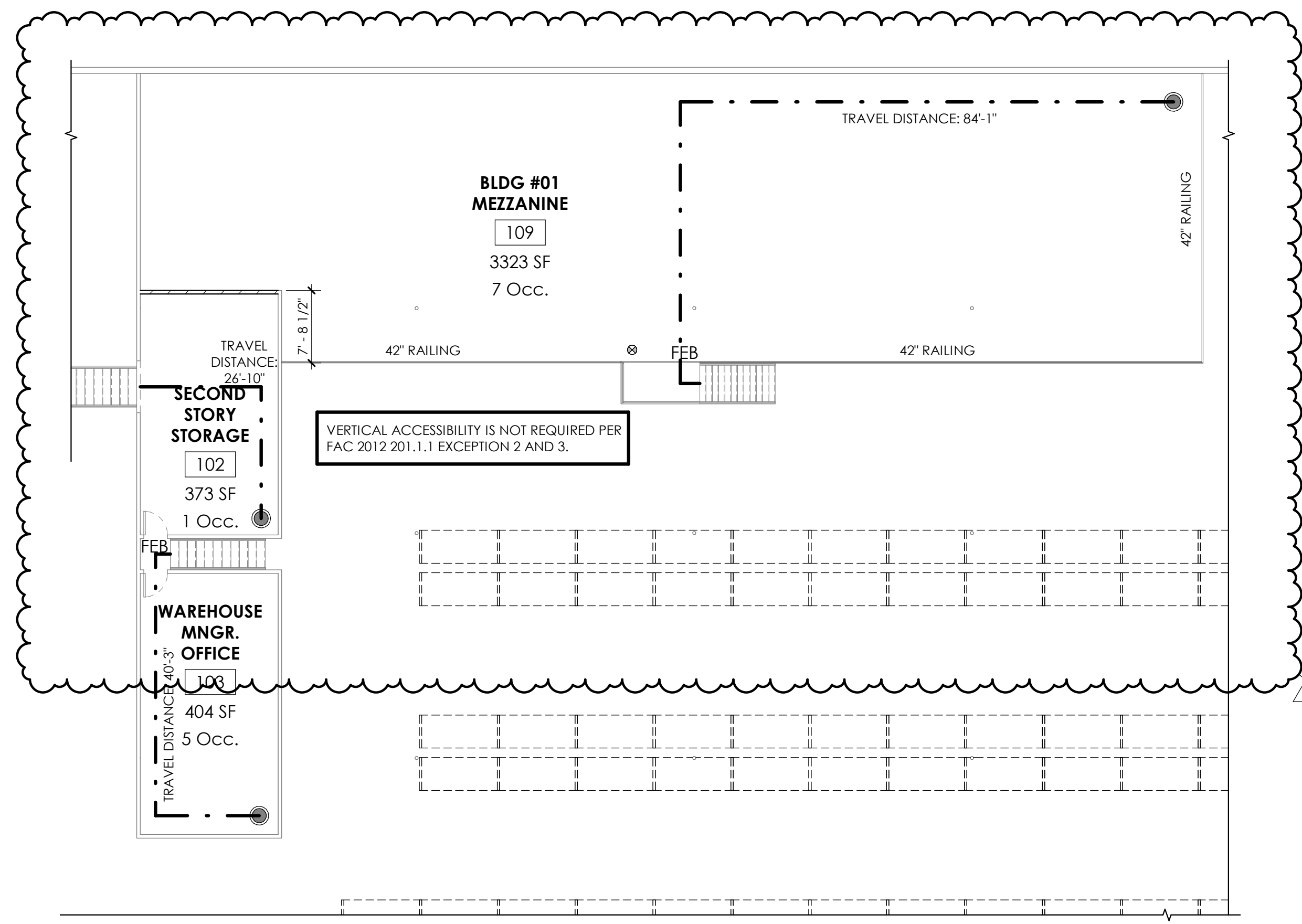
REVISIONS		
#	DATE	DESCRIPTION
1	11.30.201	REVIEW COMMENTS
2	7	
3		
4		
5		
6		
7		



DATE: 9.4.2017

SHEET: BUILDING (1) DEMO PH. 2

A101.1



2 BUILDING (1) SECOND FLOOR
3/32" = 1'-0"

LIFE SAFETY LEGEND

- EGRESS DIRECTION & WIDTH
- NEW EXIT SIGN, ILLUMINATED
- NEW EXIT SIGN W/ EMERGENCY EGRESS LIGHTING
- ACCESSIBLE EGRESS/ENTRANCE
- EXIT LIGHTING, DIRECTIONAL
- WALL BRACKET MOUNTED MP-10 FIRE EXTINGUISHER
- MAX. TRAVEL DISTANCE
- FIRE EXTINGUISHER TRAVEL DISTANCE
- COMMON TRAVEL DISTANCE
- STARTING LOCATION
- DESIGNATED CIRCULATION CLEARANCE
- EMERGENCY WALL LIGHT w/ BATTERY PACK *NOTE 9 & 10
- EMERGENCY CEILING MOUNTED LIGHT
- FIRE EXTINGUISHER SIGN WITH DOWN ARROW

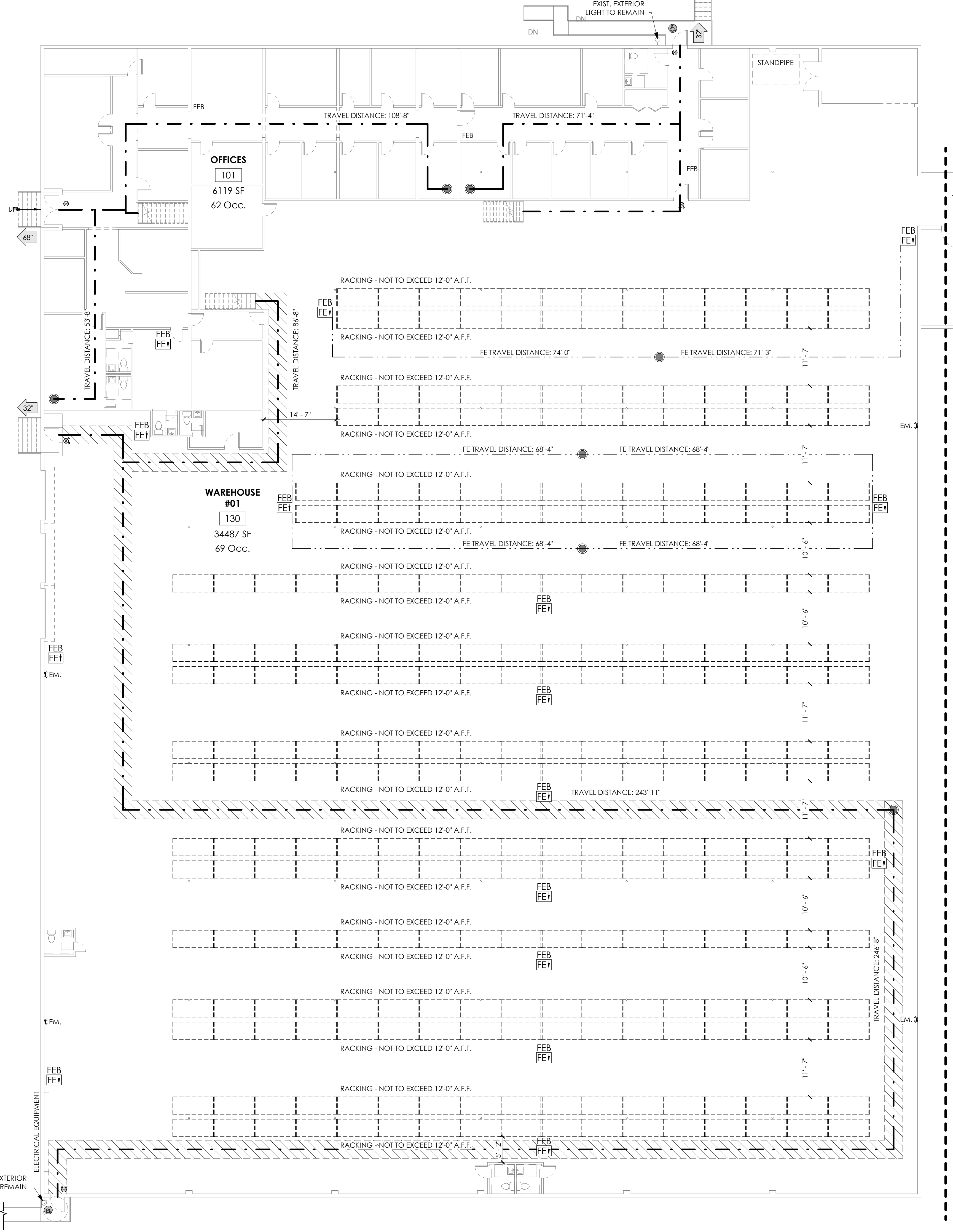
LIFE SAFETY NOTES

1. EXIT DISCHARGE AT 3'-0" DOOR IS RECOGNIZED AS 34" CLEAR W/ 1/2" MAX. THRESHOLD.
2. EXIT DISCHARGE AT 6'-0" DOOR IS RECOGNIZED AS 68" CLEAR W/ 1/2" MAX. THRESHOLD.
3. ALL HARDWARE INCLUDING CLOSER, HANDLES, PULLS, LATCHES, LOCKS, AND PANIC HARDWARE TO BE ADA COMPLIANT.
4. MAIN EXIT DOORS AT FRONT EXIT TO DEDICATED PATH OF TRAVEL/ACCESSIBLE ROUTE TO PUBLIC TRANSPORTATION STOPS, ACCESSIBLE PARKING, AND PASSENGER LOADING ZONES.
5. TOP OF STORAGE ON RACKS NOT TO EXCEED 12'-0" ABOVE FINISHED FLOOR.
6. DOUBLE STACK TIRE STORAGE NOT TO EXCEED 5'-0" ABOVE FINISHED FLOOR PER NFPA 13 (3.11.4)
7. AISLES TO MAINTAIN 10'-0" CLEAR AT ALL TIMES.
8. * INDICATES OCCUPANT LOAD IS FOR BUILDING 2 ONLY AND IS NOT INCLUDED IN THE OVERALL OCCUPANT LOAD PER FBC 2014 505.2
9. NEW INTERIOR EGRESS LIGHTING TO BE SURE LITES "APEL" OR SIM., TO BE TIED INTO EXISTING EMERGENCY CIRCUIT.
10. NEW EXTERIOR EGRESS LIGHTING TO BE SURE LITES "APWR2" OR SIM., TO BE TIED INTO EXISTING EMERGENCY CIRCUIT.
11. EXISTING SUSPENDED EMERGENCY EGRESS LIGHTING TO BE ADJUSTED BY LIFE SAFETY CONTRACTOR / ELECTRICIAN TO COMPLY WITH NEW RACKING PLAN.

OCCUPANCY SCHEDULE

RM.#	RM. NAME	AREA	CLASS.	AREA PER OCC	OCC.
101	OFFICES	6119 SF	Business areas	100 SF	62
102	SECOND STORY STORAGE	373 SF	Warehouses	500 SF	1
103	WAREHOUSE MNGR. OFFICE	404 SF	Business areas	100 SF	5
105	WAREHOUSE #03	29419 SF	Warehouses	500 SF	59
106	EMBROIDERY	4463 SF	Industrial areas	100 SF	45
107	BLDG. #03 SECOND STORY	905 SF	Warehouses	500 SF	2
108	BLDG. #3 MEZZANINE	2677 SF	Warehouses	500 SF	6
109	BLDG #01 MEZZANINE	3323 SF	Warehouses	500 SF	7
110	STORAGE	922 SF	Warehouses	500 SF	2
130	WAREHOUSE #01	34487 SF	Warehouses	500 SF	69
201	WAREHOUSE #02	35019 SF	Warehouses	500 SF	71
Grand total					329

1 BUILDING (1)
3/32" = 1'-0"



JAA ARCHITECTURE INC.
2716 ST. JOHN'S AVE
JACKSONVILLE FL 32205
P: (904) 379-5108
E: JOHN@JAAARCHITECTURE.COM
LIC. AR92748

THIS DOCUMENT, ALONG WITH ASSOCIATED DOCUMENTS, IS AN INSTRUMENT OF DESIGNER'S SERVICE FOR THE EXCLUSIVE USE AT THE PROJECT TITLED HEREIN. INFORMATION DERIVED FROM THIS DOCUMENT, AND/OR ASSOCIATED DOCUMENTS, MAY NOT BE USED FOR OTHER WORK(S) OR PROJECT(S) WITHOUT THE EXPRESS WRITTEN PERMISSION OF THE DESIGNER.

TENANT IMPROVEMENT (PHASE II)

BLDG. #01 & 03
4843 VICTOR ST
JACKSONVILLE, FL 32207

REVISIONS

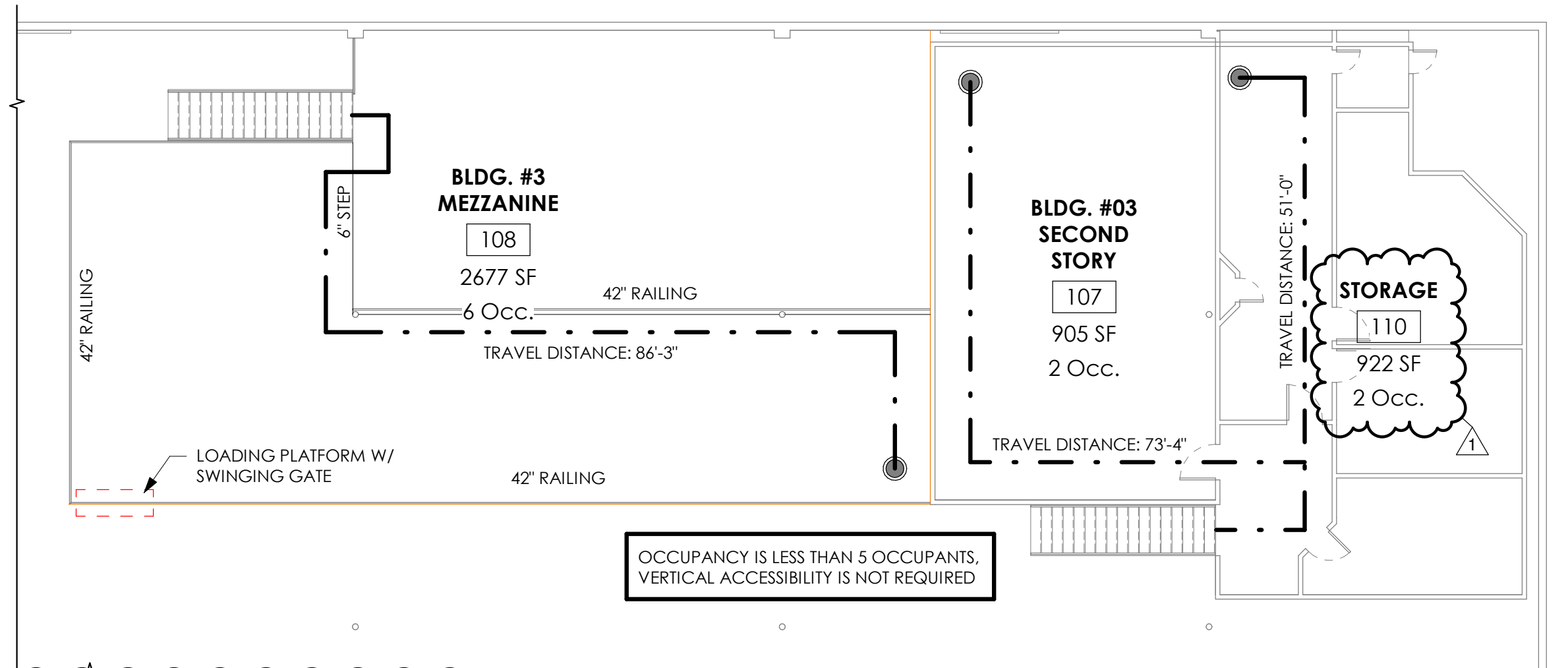
#	DATE	DESCRIPTION
1	11.30.201	REVIEW COMMENTS
2	7	
3		
4		
5		
6		
7		



DATE: 9.4.2017

SHEET: BUILDING (1) PH. 2

A101.2



OCCUPANCY IS LESS THAN 5 OCCUPANTS, VERTICAL ACCESSIBILITY IS NOT REQUIRED

2 BUILDING (3) SECOND FLOOR
3/32" = 1'-0"

RM.#	RM. NAME	AREA	CLASS.	AREA PER OCC	OCC.
101	OFFICES	6119 SF	Business areas	100 SF	62
102	SECOND STORY STORAGE	373 SF	Warehouses	500 SF	1
103	WAREHOUSE MNGR. OFFICE	404 SF	Business areas	100 SF	5
105	WAREHOUSE #03	29419 SF	Warehouses	500 SF	59
106	EMBROIDERY	4463 SF	Industrial areas	100 SF	45
107	BLDG. #03 SECOND STORY	905 SF	Warehouses	500 SF	2
108	BLDG. #3 MEZZANINE	2677 SF	Warehouses	500 SF	6
109	BLDG. #01 MEZZANINE	3323 SF	Warehouses	500 SF	7
110	STORAGE	922 SF	Warehouses	500 SF	2
130	WAREHOUSE #01	34487 SF	Warehouses	500 SF	69
201	WAREHOUSE #02	35019 SF	Warehouses	500 SF	71
Grand total					329

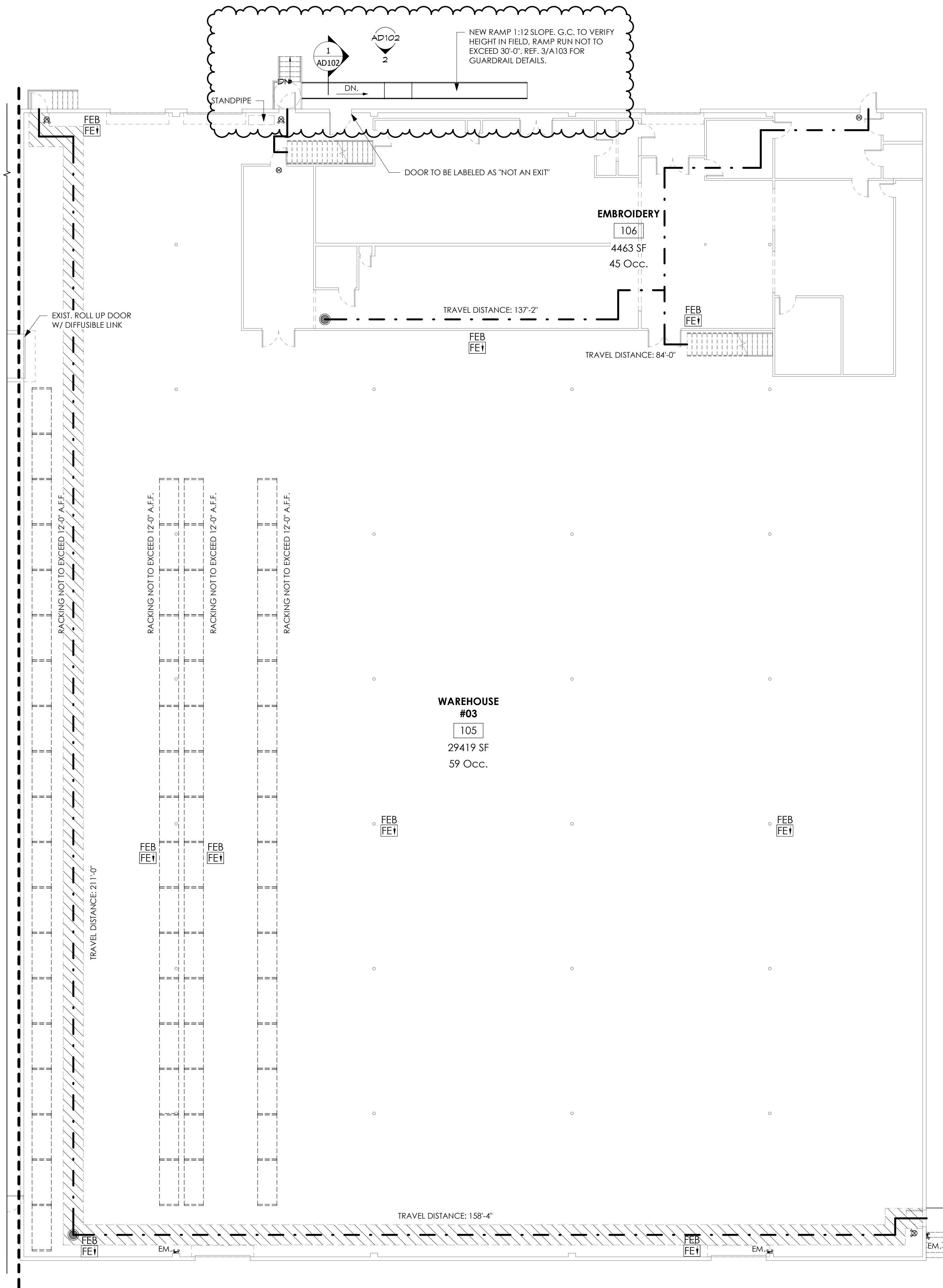
LIFE SAFETY LEGEND

- EGRESS DIRECTION & WIDTH
- NEW EXIT SIGN, ILLUMINATED
- NEW EXIT SIGN W/ EMERGENCY EGRESS LIGHTING
- ACCESSIBLE EGRESS/ENTRANCE
- EXIT LIGHTING, DIRECTIONAL
- WALL BRACKET MOUNTED MP-10 FIRE EXTINGUISHER
- MAX. TRAVEL DISTANCE
- FIRE EXTINGUISHER TRAVEL DISTANCE
- COMMON TRAVEL DISTANCE
- STARTING LOCATION
- DESIGNATED CIRCULATION CLEARANCE
- EMERGENCY WALL LIGHT w/ BATTERY PACK *NOTE 9 & 10
- EMERGENCY CEILING MOUNTED LIGHT
- FIRE EXTINGUISHER SIGN WITH DOWN ARROW

LIFE SAFETY NOTES

1. EXIT DISCHARGE AT 3'-0" DOOR IS RECOGNIZED AS 34" CLEAR W/ 1/2" MAX. THRESHOLD.
2. EXIT DISCHARGE AT 6'-0" DOOR IS RECOGNIZED AS 68" CLEAR W/ 1/2" MAX. THRESHOLD.
3. ALL HARDWARE INCLUDING CLOSER, HANDLES, PULLS, LATCHES, LOCKS, AND PANIC HARDWARE TO BE ADA COMPLIANT.
4. MAIN EXIT DOORS AT FRONT EXIT TO DEDICATED PATH OF TRAVEL/ACCESSIBLE ROUTE TO PUBLIC TRANSPORTATION STOPS, ACCESSIBLE PARKING, AND PASSENGER LOADING ZONES.
5. TOP OF STORAGE ON RACKS NOT TO EXCEED 12'-0" ABOVE FINISHED FLOOR.
6. DOUBLE STACK TIRE STORAGE NOT TO EXCEED 5'-0" ABOVE FINISHED FLOOR PER NFPA 13 (3.11.4)
7. AISLES TO MAINTAIN 10'-0" CLEAR AT ALL TIMES.
8. * INDICATES OCCUPANT LOAD IS FOR BUILDING 2 ONLY AND IS NOT INCLUDED IN THE OVERALL OCCUPANT LOAD PER FBC 2014 505.2
9. NEW INTERIOR EGRESS LIGHTING TO BE SURE LITES "APEL" OR SIM., TO BE TIED INTO EXISTING EMERGENCY CIRCUIT.
10. NEW EXTERIOR EGRESS LIGHTING TO BE SURE LITES "APWR2" OR SIM., TO BE TIED INTO EXISTING EMERGENCY CIRCUIT.
11. EXISTING SUSPENDED EMERGENCY EGRESS LIGHTING TO BE ADJUSTED BY LIFE SAFETY CONTRACTOR / ELECTRICIAN TO COMPLY WITH NEW RACKING PLAN.

1 BUILDING (3)
3/32" = 1'-0"

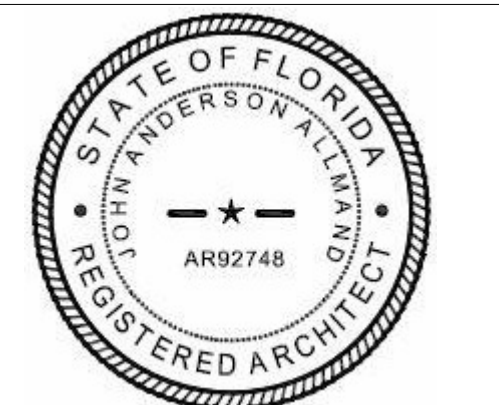


JAA ARCHITECTURE INC.
2716 ST. JOHN'S AVE
JACKSONVILLE FL 32205
P: (904) 379-5108
E: JOHN@JAAARCHITECTURE.COM
LIC. AR92748

THIS DOCUMENT, ALONG WITH ASSOCIATED DOCUMENTS, IS AN INSTRUMENT OF DESIGNER'S SERVICE FOR THE EXCLUSIVE USE AT THE PROJECT TITLED HEREIN. INFORMATION DERIVED FROM THIS DOCUMENT, AND/OR ASSOCIATED DOCUMENTS, MAY NOT BE USED FOR OTHER WORK(S) OR PROJECT(S) WITHOUT THE EXPRESS WRITTEN PERMISSION OF THE DESIGNER.

TENANT IMPROVEMENT (PHASE II)
BLDG. #01 & 03
4843 VICTOR ST
JACKSONVILLE, FL 32207

#	DATE	DESCRIPTION
1	11.30.201	REVIEW COMMENTS
2	7	
3		
4		
5		
6		
7		



DATE: 9.4.2017

SHEET: BUILDING (3) PH. 2

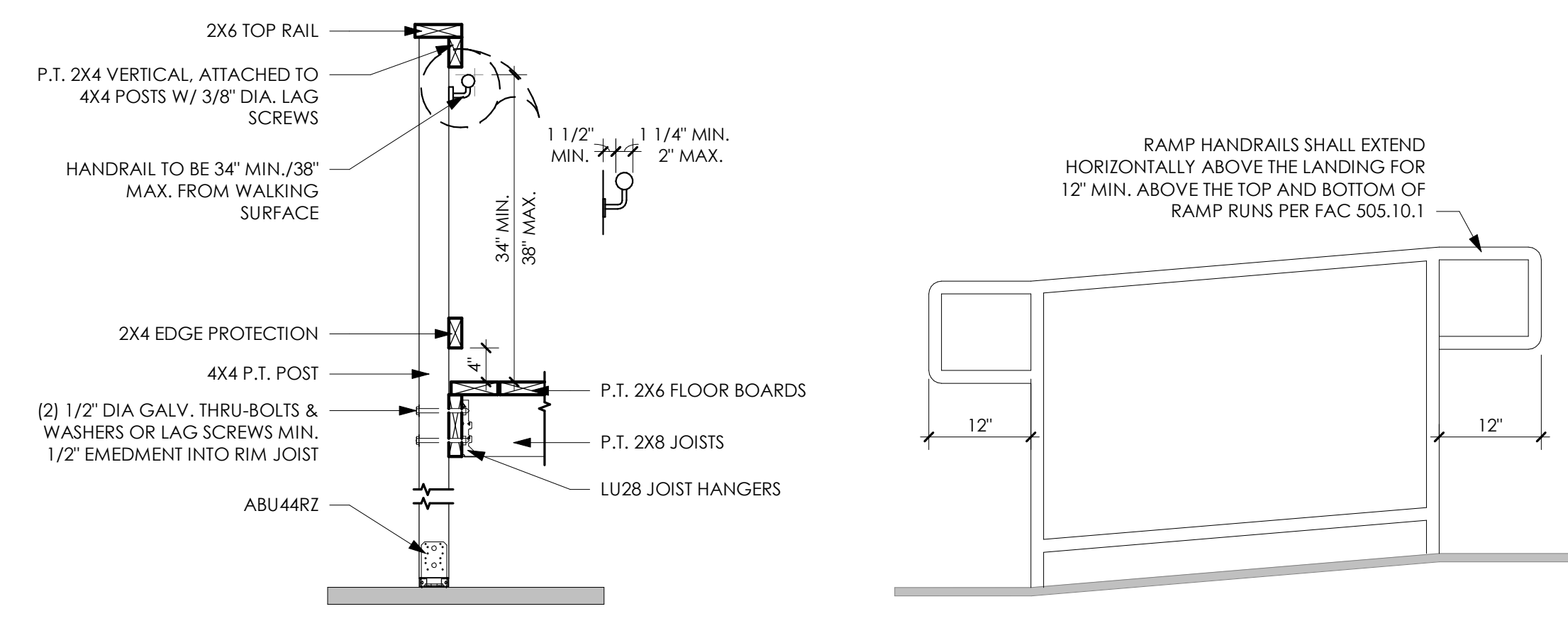
A103



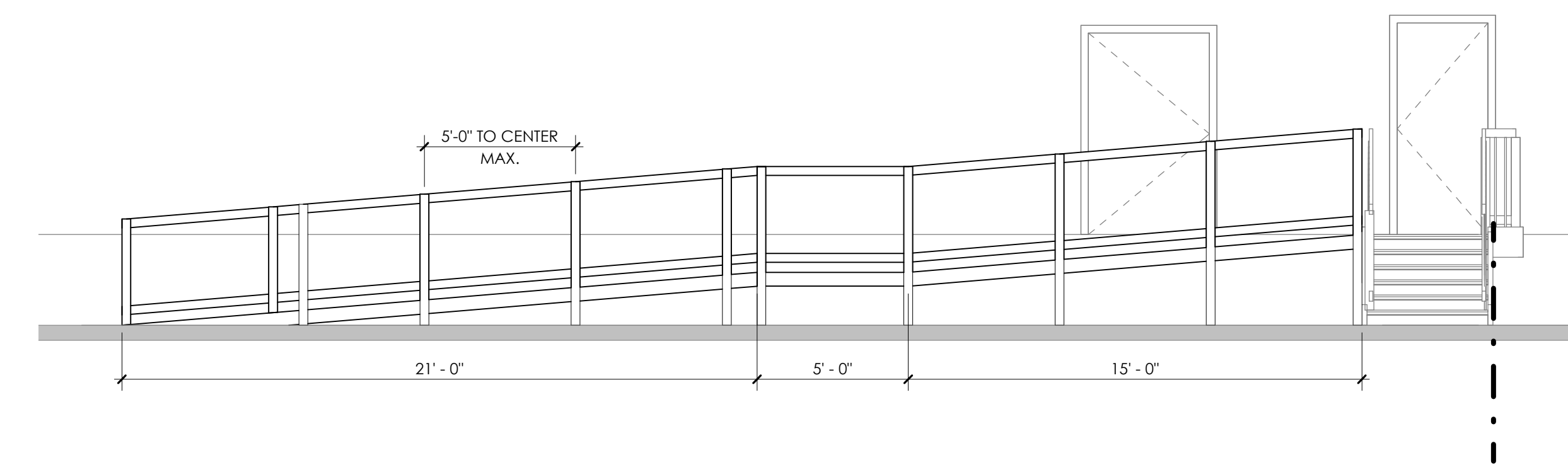
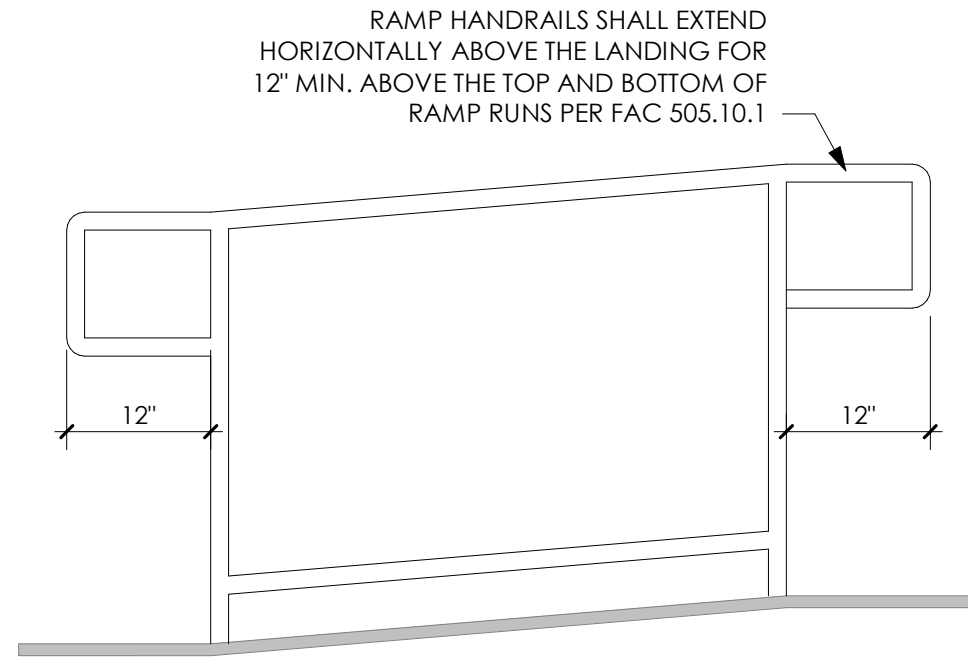
JAA ARCHITECTURE INC.
 2716 ST. JOHN'S AVE
 JACKSONVILLE FL 32205
 P: (904) 379-5108
 E: JOHN@JAAARCHITECTURE.COM
 LIC. AR92748

THIS DOCUMENT, ALONG WITH ASSOCIATED DOCUMENTS, IS AN INSTRUMENT OF DESIGNER'S SERVICE FOR THE EXCLUSIVE USE AT THE PROJECT TITLED HEREIN. INFORMATION DERIVED FROM THIS DOCUMENT, AND/OR ASSOCIATED DOCUMENTS, MAY NOT BE USED FOR OTHER WORK(S) OR PROJECT(S) WITHOUT THE EXPRESS WRITTEN PERMISSION OF THE DESIGNER.

TENANT IMPROVEMENT (PHASE II)
BLDG. #01 & 03
 4843 VICTOR ST
 JACKSONVILLE, FL 32207



① HANDRAIL SECTION
 3/4" = 1'-0"



② ELEVATION @ NEW RAMP, TYP.
 1/4" = 1'-0"

REVISIONS

#	DATE	DESCRIPTION
1	11.30.2017	REVIEW COMMENTS
2	7	
3		
4		
5		
6		
7		



DATE: 9.4.2017

SHEET: RAMP DETAILS

AD102
 *SHEET ADDED IN ITS ENTIRETY