

ADA GENERAL LAV REQUIREMENTS:

- 606.1 Lavatories and sinks shall comply with 606.
- 606.2 A clear floor space complying with 305, positioned for a forward approach, and knee and toe clearance complying with 306 shall be provided.
- 606.3 Lavatories and sinks shall be installed with the front of the higher of the rim or counter surface 34 inches (865 mm) maximum above the finish floor or ground.
- 606.4 Controls for faucets shall comply with 309. Hand-operated metering faucets shall remain open for 10 seconds minimum.
- 606.5 Water supply and drain pipes under lavatories and sinks shall be insulated or otherwise configured to protect against contact. There shall be no sharp or abrasive surfaces under lavatories and sinks.

ADA TOILET AND BATHING ROOM REQUIREMENTS:

- 603.1 Toilet and bathing rooms shall comply with 603.
- 603.2.1 Turning space complying with 304 shall be provided within the room.
- 603.2.2 Required clear floor spaces, clearance at fixtures, and turning space shall be permitted to overlap.
- 603.2.3 Doors shall not swing into the clear floor space or clearance required for any fixture. Doors shall be permitted to swing into the required turning space.
- 603.3 Mirrors located above lavatories or counter tops shall be installed with the bottom edge of the reflecting surface 40 inches (1015 mm) maximum above the finish floor or ground. Mirrors not located above lavatories or counter tops shall be installed with the bottom edge of the reflecting surface 35 inches (890 mm) maximum above the finish floor or ground.

ADA WATER CLOSETS AND TOILET COMPARTMENTS:

- 604.1 Water closets and toilet compartments shall comply with 604.2 through 604.8.
- 604.2 The water closet shall be positioned with a wall or partition to the rear and to one side. The centerline of the water closet shall be 16 inches (405 mm) minimum to 18 inches (455 mm) maximum from the side wall or partition, except that the water closet shall be 17 inches (430 mm) minimum and 19 inches (485 mm) maximum from the side wall or partition in the ambulatory accessible toilet compartment specified in 604.8.2. Water closets shall be arranged for a left-hand or right-hand approach.
- 604.3 Clearances around water closets and in toilet compartments shall comply with 604.3.
- 604.3.1 Clearance around a water closet shall be 60 inches (1525 mm) minimum measured perpendicular from the side wall and 56 inches (1420 mm) minimum measured perpendicular from the rear wall.
- 604.3.2 The required clearance around the water closet shall be permitted to overlap the water closet, associated grab bars, dispensers, sanitary napkin disposal units, coat hooks, shelves, accessible routes, clear floor space and clearances required at other fixtures, and the turning space. No other fixtures or obstructions shall be located within the required water closet clearance.
- 604.4 The seat height of a water closet above the finish floor shall be 17 inches (430 mm) minimum and 19 inches (485 mm) maximum measured to the top of the seat. Seats shall not be sprung to return to a lifted position.
- 604.5 Grab bars for water closets shall comply with 609. Grab bars shall be provided on the side wall closest to the water closet and on the rear wall.
- 604.5.1 The side wall grab bar shall be 42 inches (1065 mm) long minimum, located 12 inches (305 mm) maximum from the rear wall and extending 54 inches (1370 mm) minimum from the rear wall.
- 604.5.2 The rear wall grab bar shall be 36 inches (915 mm) long minimum and extend from the centerline of the water closet 12 inches (305 mm) minimum on one side and 24 inches (610 mm) minimum on the other side.
- 604.6 Flush controls shall be hand operated or automatic. Hand operated flush controls shall comply with 309. Flush controls shall be located on the open side of the water closet except in ambulatory accessible compartments complying with 604.8.2.
- 604.7 Toilet paper dispensers shall comply with 309.4 and shall be 7 inches (180 mm) minimum and 9 inches (230 mm) maximum in front of the water closet measured to the centerline of the dispenser. The outlet of the dispenser shall be 15 inches (380 mm) minimum and 48 inches (1220 mm) maximum above the finish floor and shall not be located behind grab bars. Dispensers shall not be of a type that controls delivery or that does not allow continuous paper flow.
- 604.8 Wheelchair accessible toilet compartments shall meet the requirements of 604.8.1 and 604.8.3. Compartments containing more than one plumbing fixture shall comply with 603. Ambulatory accessible compartments shall comply with 604.8.2 and 604.8.3.
- 604.8.1 Wheelchair accessible compartments shall comply with 604.8.1.
- 604.8.1.1 Wheelchair accessible compartments shall be 60 inches (1525 mm) wide minimum measured perpendicular to the side wall, and 56 inches (1420 mm) deep minimum for wall hung water closets and 59 inches (1500 mm) deep minimum for floor mounted water closets measured perpendicular to the rear wall. Wheelchair accessible compartments for children's use shall be 60 inches (1525 mm) wide minimum measured perpendicular to the side wall, and 59 inches (1500 mm) deep minimum for wall hung and floor mounted water closets measured perpendicular to the rear wall.
- 604.8.1.2 Toilet compartment doors, including door hardware, shall comply with 404 except that if the approach is to the latch side of the compartment door, clearance between the door side of the compartment and any obstruction shall be 42 inches (1065 mm) minimum. Doors shall be located in the front partition or in the side wall or partition farthest from the water closet. Where located in the front partition, the door opening shall be 4 inches (100 mm) maximum from the side wall or partition farthest from the water closet. Where located in the side wall or partition, the door opening shall be 4 inches (100 mm) maximum from the front partition. The door shall be self-closing. A door pull complying with 404.2.7 shall be placed on both sides of the door near the latch. Toilet compartment doors shall not swing into the minimum required compartment area.
- 604.8.1.3 Compartments shall be arranged for left-hand or right-hand approach to the water closet.
- 604.8.1.4 The front partition and at least one side partition shall provide a toe clearance of 9 inches (230 mm) minimum above the finish floor and 6 inches (150 mm) deep minimum beyond the compartment-side face of the partition, exclusive of partition support members. Compartments for children's use shall provide a toe clearance of 12 inches (305 mm) minimum above the finish floor.
- 604.8.1.5 Grab bars shall comply with 609. A side-wall grab bar complying with 604.5.1 shall be provided and shall be located on the wall closest to the water closet. In addition, a rear-wall grab bar complying with 604.5.2 shall be provided.

ADA GENERAL URINAL REQUIREMENTS:

- 605.1 Urinals shall comply with 605
- 605.2 Urinals shall be the stall-type or the wall-hung type with the rim 17 inches (430 mm) maximum above the finish floor or ground. Urinals shall be 13 1/2 inches (345 mm) deep minimum measured from the outer face of the urinal rim to the back of the fixture.
- 605.3 A clear floor or ground space complying with 305 positioned for forward approach shall be provided.
- 605.4 Flush controls shall be hand operated or automatic. Hand operated flush controls shall comply with 309.

ADA TURNING SPACE REQUIREMENTS:

- 304.3.1 The turning space shall be a space of 60 inches (1525 mm) diameter minimum. The space shall be permitted to include knee and toe clearance complying with 306.
- 304.3.2 The turning space shall be a T-shaped space within a 60 inch (1525 mm) square minimum with arms and base 36 inches (915 mm) wide minimum. Each arm of the T shall be clear of obstructions 12 inches (305 mm) minimum in each direction and the base shall be clear of obstructions 24 inches (610 mm) minimum. The space shall be permitted to include knee and toe clearance complying with 306 only at the end of either the base or one arm.
- 304.4 Doors shall be permitted to swing into turning spaces.

ADA GENERAL GRAB BAR REQUIREMENTS:

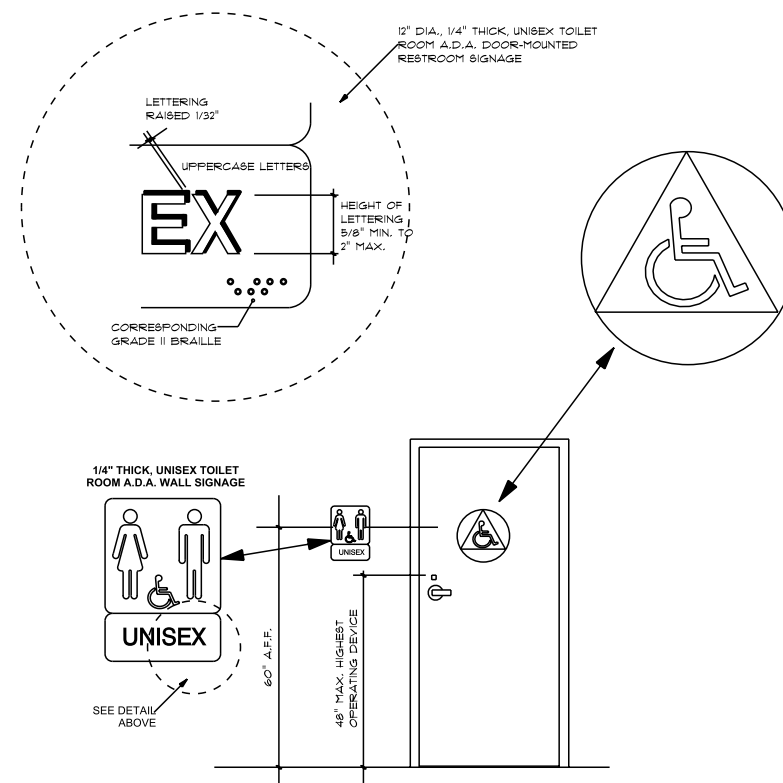
- 609.1 Grab bars in toilet facilities and bathing facilities shall comply with 609.
- 609.2 Grab bars shall have a cross section complying with 609.2.1 or 609.2.2
- 609.2.1 Grab bars with circular cross sections shall have an outside diameter of 1 1/4 inches (32 mm) minimum and 2 inches (51 mm) maximum.
- 609.2.2 Grab bars with non-circular cross sections shall have a cross-section dimension of 2 inches (51 mm) maximum and a perimeter dimension of 4 inches (100 mm) minimum and 4.8 inches (120 mm) maximum.
- 609.3 The space between the wall and the grab bar shall be 1 1/2 inches (38 mm). The space between the grab bar and projecting objects below and at the ends shall be 1 1/2 inches (38 mm) minimum. The space between the grab bar and projecting objects above shall be 12 inches (305 mm) minimum.
- 609.4 Grab bars shall be installed in a horizontal position, 33 inches (840 mm) minimum and 36 inches (915 mm) maximum above the finish floor measured to the top of the gripping surface, except that at water closets for children's use complying with 604.9, grab bars shall be installed in a horizontal position 18 inches (455 mm) minimum and 27 inches (685 mm) maximum above the finish floor measured to the top of the gripping surface. The height of the lower grab bar on the back wall of a bathtub shall comply with 607.4.1.1 or 607.4.2.1.
- 609.5 Grab bars and any wall or other surfaces adjacent to grab bars shall be free of sharp or abrasive elements and shall have rounded edges.
- 609.6 Grab bars shall not rotate within their fittings.
- 609.7 Grab bars shall be installed in any manner that provides a gripping surface at the specified locations and that does not obstruct the required clear floor space.
- 609.8 Allowable stresses shall not be exceeded for materials used when a vertical or horizontal force of 250 pounds (1112 N) is applied at any point on the grab bar, fastener, mounting device, or supporting structure.

ADA CLEAR SPACE REQUIREMENTS:

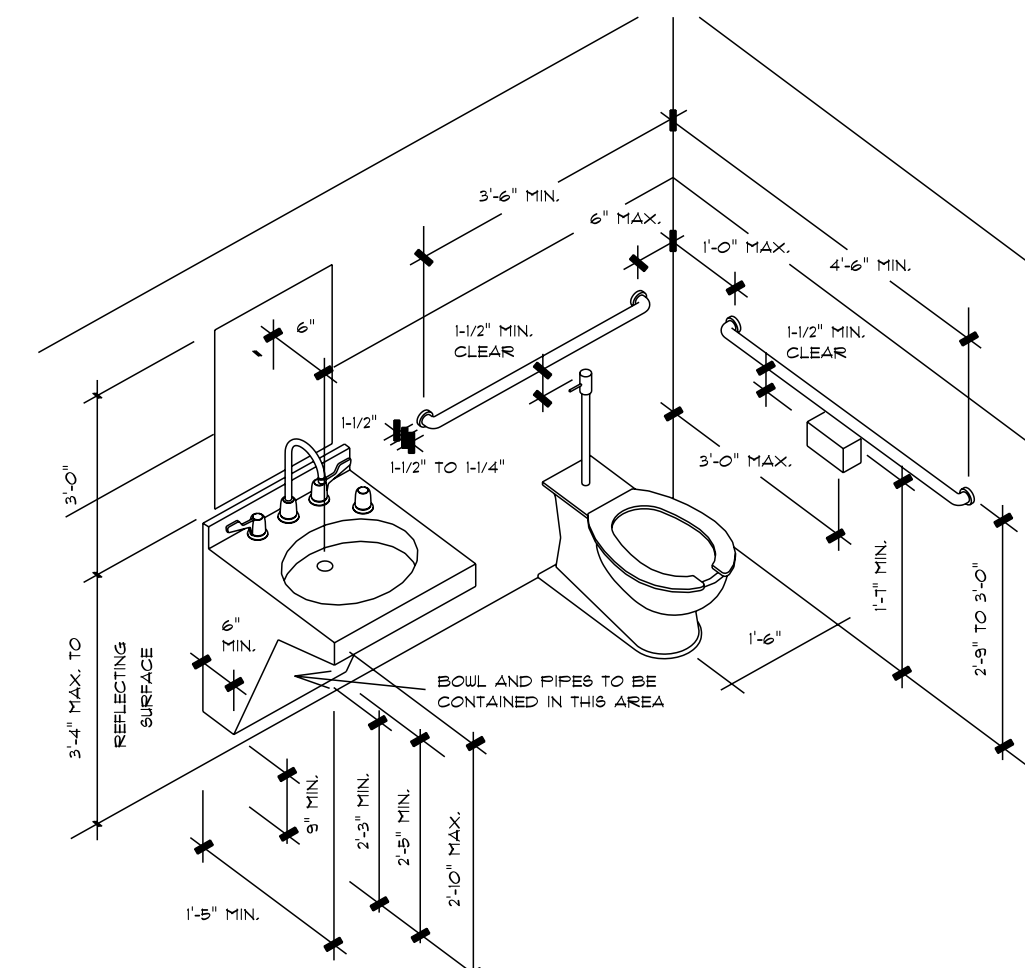
- 305.3 The turning space shall be a space of 60 inches (1525 mm) diameter minimum. The space shall be permitted to include knee and toe clearance complying with 306.
- 305.7.1 Alcoves shall be 36 inches (915 mm) wide minimum where the depth exceeds 24 inches (610 mm).
- 305.7.2 Alcoves shall be 60 inches (1525 mm) wide minimum where the depth exceeds 15 inches (380 mm).
- 306.2.2 Toe clearance shall extend 25 inches (635 mm) maximum under an element.
- 306.2.3 Where toe clearance is required at an element as part of a clear floor space, the toe clearance shall extend 17 inches (430 mm) minimum under the element.
- 306.2.4 Space extending greater than 6 inches (150 mm) beyond the available knee clearance at 9 inches (230 mm) above the finish floor or ground shall not be considered toe clearance.
- 306.2.5 Toe clearance shall be 30 inches (760 mm) wide minimum.
- 402.2 Accessible routes shall consist of one or more of the following components: walking surfaces with a running slope not steeper than 1:20, doorways, ramps, curb ramps excluding the flared sides, elevators, and platform lifts. All components of an accessible route shall comply with the applicable requirements of Chapter 4 and 208.3.1.
- 403.5.1 Except as provided in 403.5.2 and 403.5.3, the clear width of walking surfaces shall be 36 inches (915 mm) minimum.
- 404.2.3 Door openings shall provide a clear width of 32 inches (815 mm) minimum. Clear openings of doorways with swinging doors shall be measured between the face of the door and the stop, with the door open 90 degrees. Openings more than 24 inches (610 mm) deep shall provide a clear opening of 36 inches (915 mm) minimum. There shall be no projections into the required clear opening width lower than 34 inches (865 mm) above the finish floor or ground. Projections into the clear opening width between 34 inches (865 mm) and 80 inches (2030 mm) above the finish floor or ground shall not exceed 4 inches (100 mm).
- 404.2.7 Handles, pulls, latches, locks, and other operable parts on doors and gates shall comply with 309.4. Operable parts of such hardware shall be 34 inches (865 mm) minimum and 48 inches (1220 mm) maximum above the finish floor or ground. Where sliding doors are in the fully open position, operating hardware shall be exposed and usable from both sides.
- 802.1.2 A single wheelchair space shall be 36 inches (915 mm) wide minimum. Where two adjacent wheelchair spaces are provided, each wheelchair space shall be 33 inches (840 mm) wide minimum.
- 802.1.3 Where a wheelchair space can be entered from the front or rear, the wheelchair space shall be 48 inches (1220 mm) deep minimum. Where a wheelchair space can be entered only from the side, the wheelchair space shall be 60 inches (1525 mm) deep minimum.

GENERAL ACCESSIBILITY NOTES:

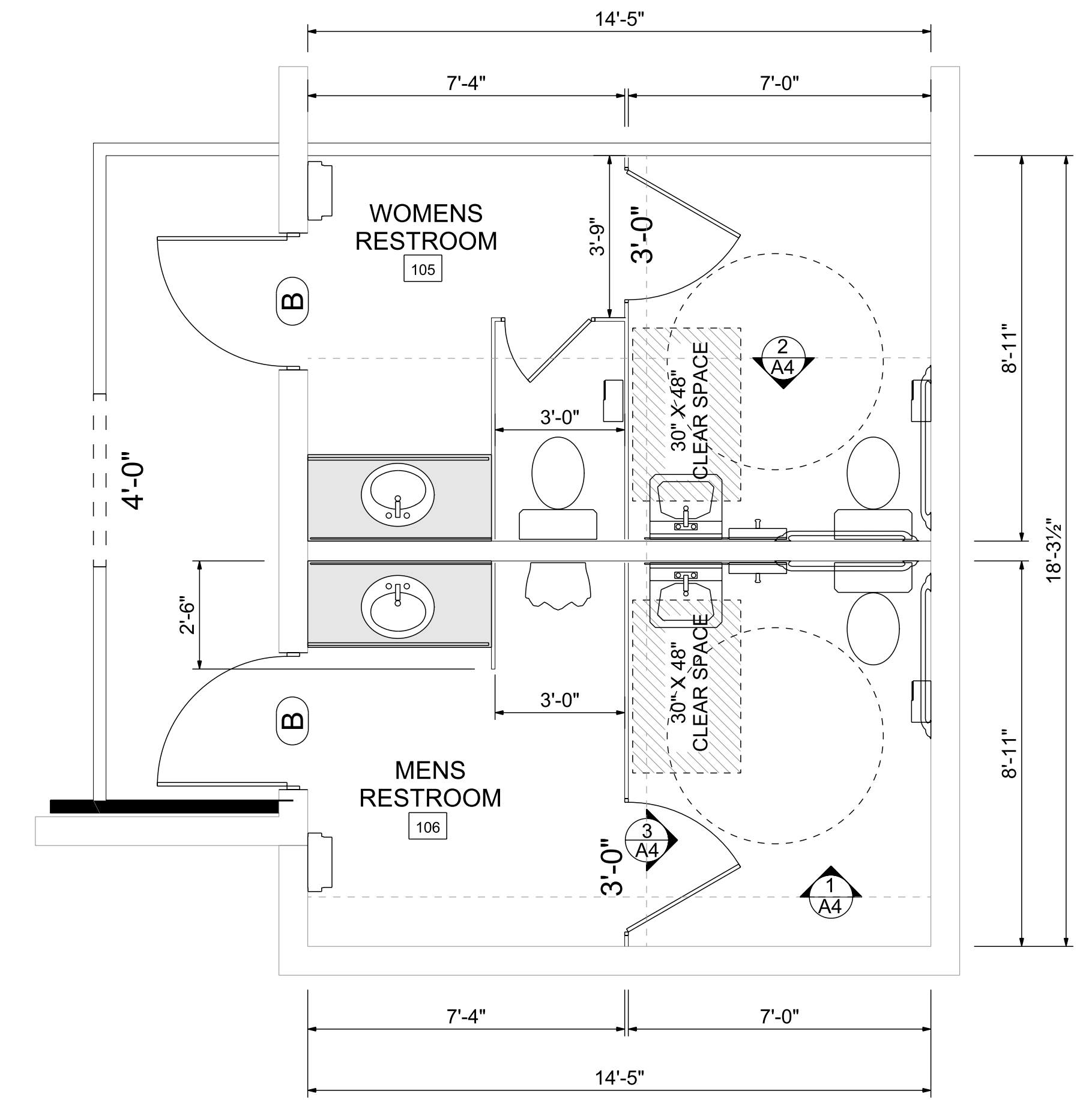
- WHILE IT IS THE INTENT OF THE DESIGNER/ENGINEER, HIS EMPLOYEES, AND ASSIGNS TO ADHERE TO ALL ASPECTS AND REGULATIONS OF THE AMERICANS WITH DISABILITIES ACT (ADA) AND LOCAL ACCESSIBILITY CODES, THE CONTRACTOR SHALL NOT BE RELIEVED OF SOLE RESPONSIBILITY TO VERIFY ALL REQUIREMENTS OF SAID ACTS AS PERTAINING TO CONTRACT DOCUMENTS CONTAINED HEREIN PRIOR TO COMMENCEMENT OF ANY WORK. HE SHALL ALSO BE RESPONSIBLE TO IMMEDIATELY NOTIFY DESIGNER OF POSSIBLE DISCREPANCIES. HE SHALL ALSO PAY SPECIAL ATTENTION TO ITEMS LISTED BELOW:
1. THE BOTTOM 10" OF ALL DOORS SHALL HAVE A SMOOTH UNINTERRUPTED SURFACE TO ALLOW DOOR TO BE OPENED BY A WHEELCHAIR FOOTREST.
 2. NO THRESHOLD SHALL EXCEED 1/2" IN HEIGHT.
 3. HAND-OPERATED DOOR OPENING HARDWARE SHALL NOT REQUIRE TIGHT GRASPING OR TWISTING OF THE WRIST IN ORDER TO OPERATE, AND SHALL BE MOUNTED NO HIGHER THAN 48" A.F.F..
 4. MAXIMUM FORCE REQUIRED TO OPEN EXTERIOR DOORS SHALL NOT EXCEED 5LBS. MAXIMUM FORCE REQUIRED TO OPEN INTERIOR DOORS SHALL NOT EXCEED 5LBS.
 5. IF A DOOR HAS A CLOSER, THE THE SWEEP PERIOD OF THE CLOSER SHALL BE ADJUSTED SO THAT FOR AN OPEN POSITION OF 70 DEGREES, THE DOOR WILL TAKE AT LEAST 3 SECONDS TO MOVE TO A POINT 5 INCHES FROM THE LATCH, MEASURED TO THE LEADING EDGE OF THE DOOR.
 6. LAVATORIES SHALL HAVE A MINIMUM CLEARANCE OF 29" FROM THE FLOOR TO BOTTOM EDGE OF THE APRON WITH A MINIMUM KNEE CLEARANCE OF 8" IN DEPTH X 30" IN WIDTH. TOE CLEARANCE SHALL BE NO LESS THAN 17" DEEP FROM FRONT EDGE OF THE LAVATORY.
 7. INSULATE OR COVER ALL PLUMBING UNDER LAVATORIES SO THAT THERE ARE NO SHARP OR ABRASIVE SURFACES.
 8. FAUCET CONTROL AND OPERATING MECHANISMS SHALL BE OPERABLE WITH ONE HAND AND SHALL NOT REQUIRE TIGHT GRASPING, PINCHING, OR TWISTING OF THE WRIST. THE FORCE REQUIRED TO ACTIVATE CONTROLS SHALL BE NO GREATER THAN 5LBS. LEVER OPERATED, FLUSH TYPE AND ELECTRONICALLY OPERATED MECHANISMS ARE EXAMPLES OF ACCEPTABLE DESIGNS. IF SELF CLOSING VALVES ARE USED, THE FAUCET SHALL REMAIN OPEN FOR A MINIMUM OF 10 SECONDS.
 9. FLUSH CONTROLS AT WATER CLOSETS AND URINALS SHALL BE OPERABLE AS FAUCET CONTROLS ARE IN #8 ABOVE, AND SHALL BE MOUNTED NO GREATER THAN 44" A.F.F..
 10. PROVIDE SIGNAGE WITH INTERNATIONAL SYMBOL OF ACCESSIBILITY IN ACCORDANCE WITH ANSI A117.1 (LATEST EDITION) AND ADA REQUIREMENTS.
 11. SIGNAGE HEIGHT SHALL BE IN ACCORDANCE WITH ALL APPLICABLE NATIONAL, STATE, AND LOCAL ACCESSIBILITY CODES.
 12. RESTROOM SIGNAGE SHALL BE MOUNTED ON THE WALL ADJACENT TO THE LATCH SIDE OF THE RESPECTIVE RESTROOM DOOR.
 13. NOT ALL NOTES MAY APPLY TO THESE PLANS.
 14. EXISTING MENS AND WOMENS RESTROOMS SHALL REMAIN AS-IS (NO FIXTURE CHANGE)
 15. TENANT TO BE RESPONSIBLE FOR THE PURCHASE AND INSTALLATION OF ALL REQUIRED ADA SIGNAGE.



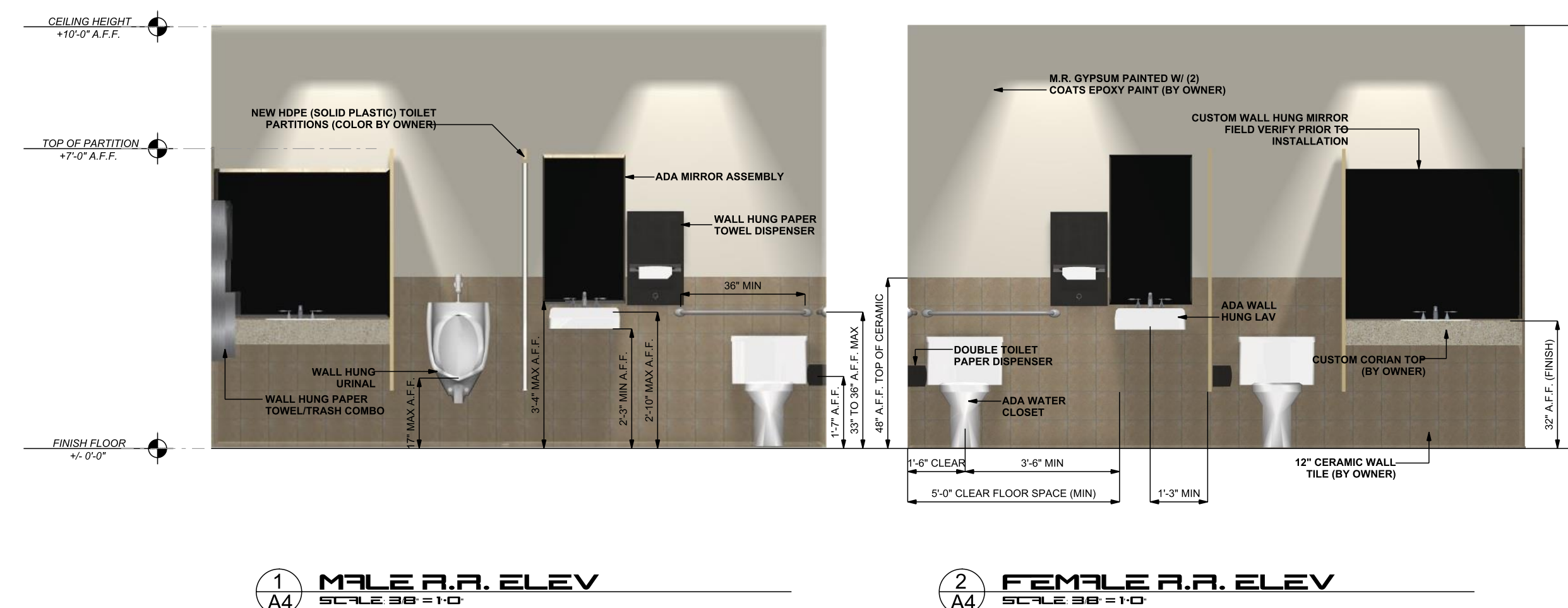
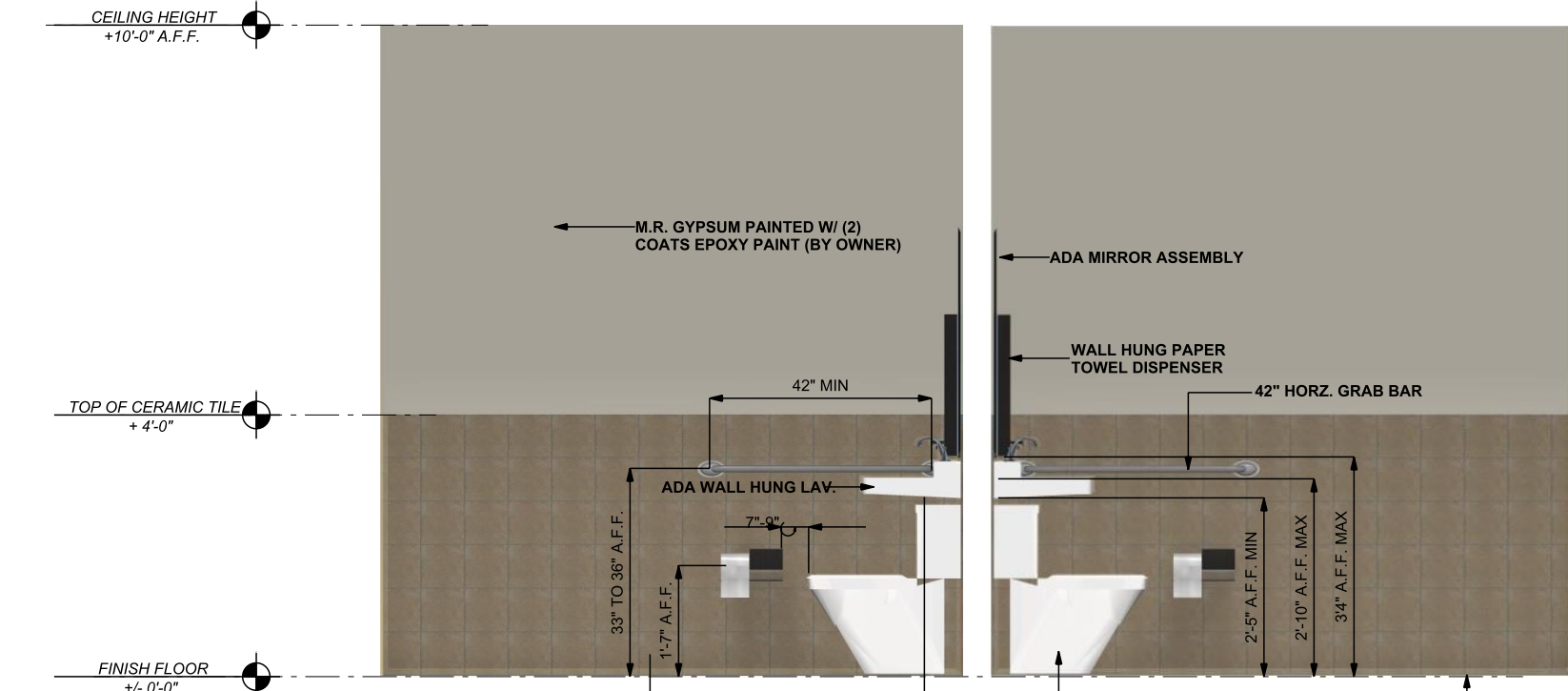
TYPICAL RESTROOM SIGNAGE
SCALE: N.T.S.



TYPICAL CLEARANCES
SCALE: N.T.S.



BATHROOM PLAN VIEW
SCALE: 3/8" = 1'-0"



WRITTEN DIMENSIONS ON THESE DOCUMENTS SHALL TAKE PRECEDENCE OVER ALL SCALED DIMENSIONS. CONTRACTORS ARE TO VERIFY AND BE RESPONSIBLE FOR ALL DIMENSIONAL SETBACKS & CONDITIONS AT THE JOB SITE. ENGINEER/DESIGNER SHALL BE NOTIFIED OF ANY VARIATIONS IN DIMENSIONS, SETBACKS AND/OR CONDITIONS BEFORE SAID CONSTRUCTION IS AUTHORIZED. SHOP DRAWINGS SHALL BE MARKED "REVIEWED BY THE ENGINEER/DESIGNER" BEFORE FABRICATION OF PARTS IS APPROVED.

GREEN DESIGN
GREEN DESIGN CONSTRUCTION & DEVELOPMENT, LLC
JOHN H. GREENWELL, P.E. #40940
4499 SE KUBIN AVE, STUART, FLORIDA 34997
(888) 634-7428 / (772) 213-0336
WWW.GDCFLORIDA.COM

- SHEET DETAILS**
- ADA NOTES
 - SIGNAGE DETAILS
 - BATHROOM LAYOUT
 - ELEVATIONS
 - TYPICAL CLEARANCES

REVISION DATE:

CLIENT:
MCHARDY INVESTMENTS
432 SE MLK BLVD
STUART, FL 34994
PIN# 04-38-41-015-009-00010-0

PROJECT:
M.C.'S GRILLE & OFFICE

DRAWN: S.M.K.
CHECKED: JK
DATE: April 18, 2014
SCALE: AS NOTED
JOB NO.: MCH-2013-48

SHEET:
A-4