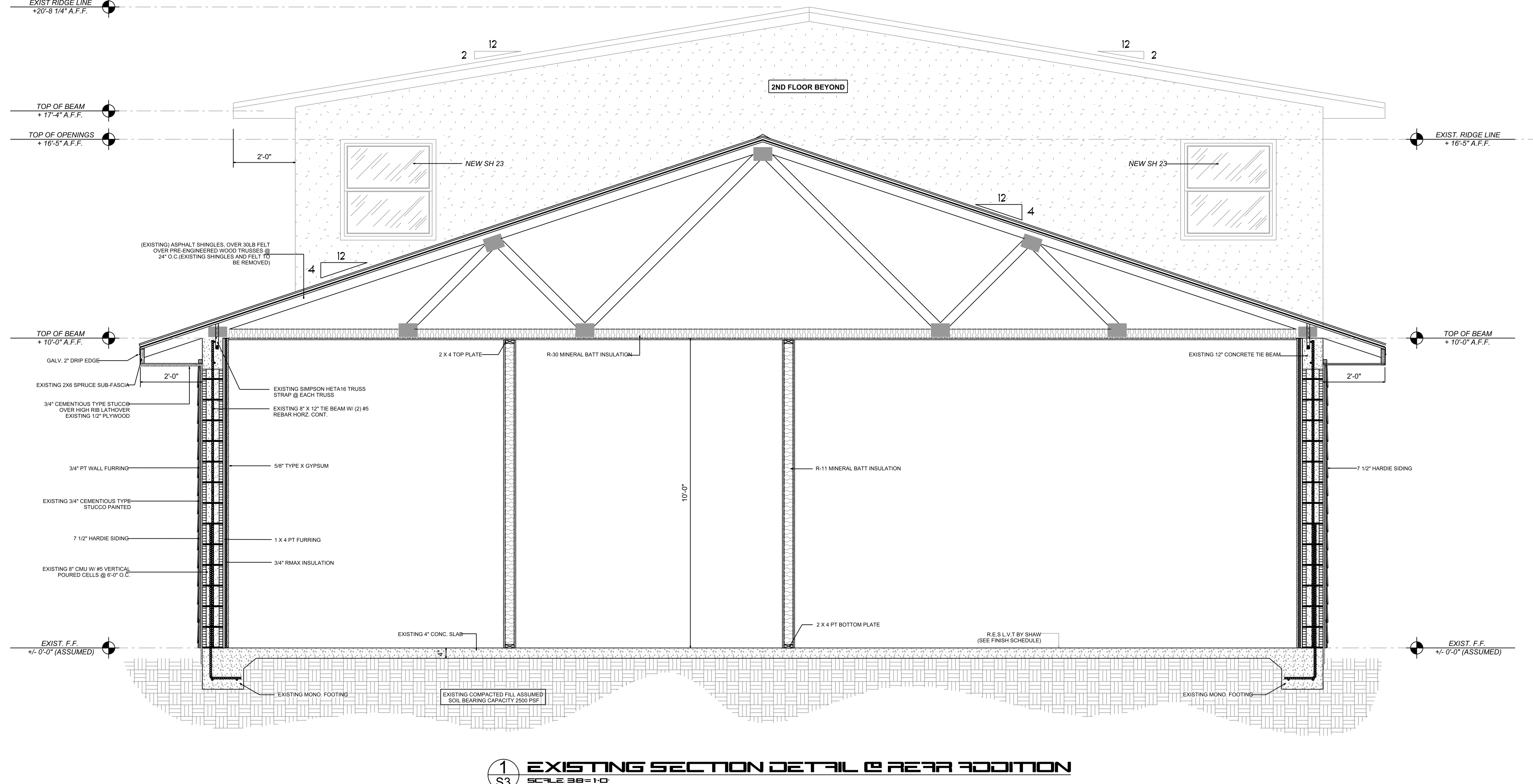
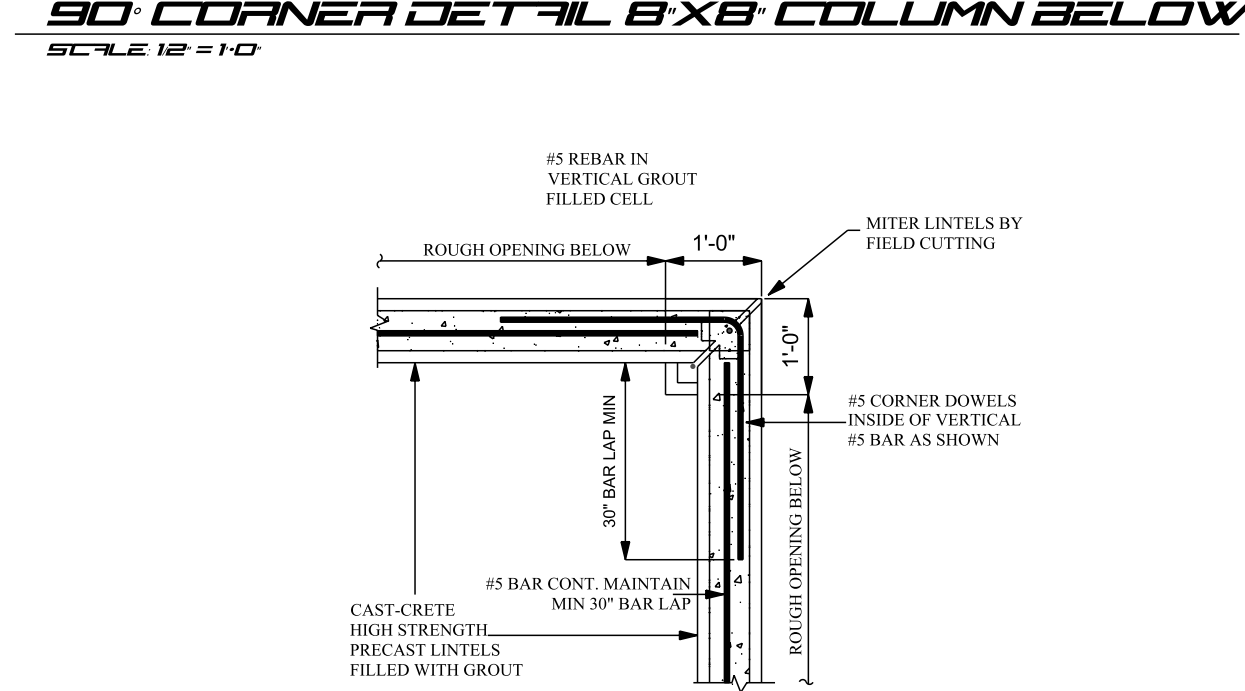
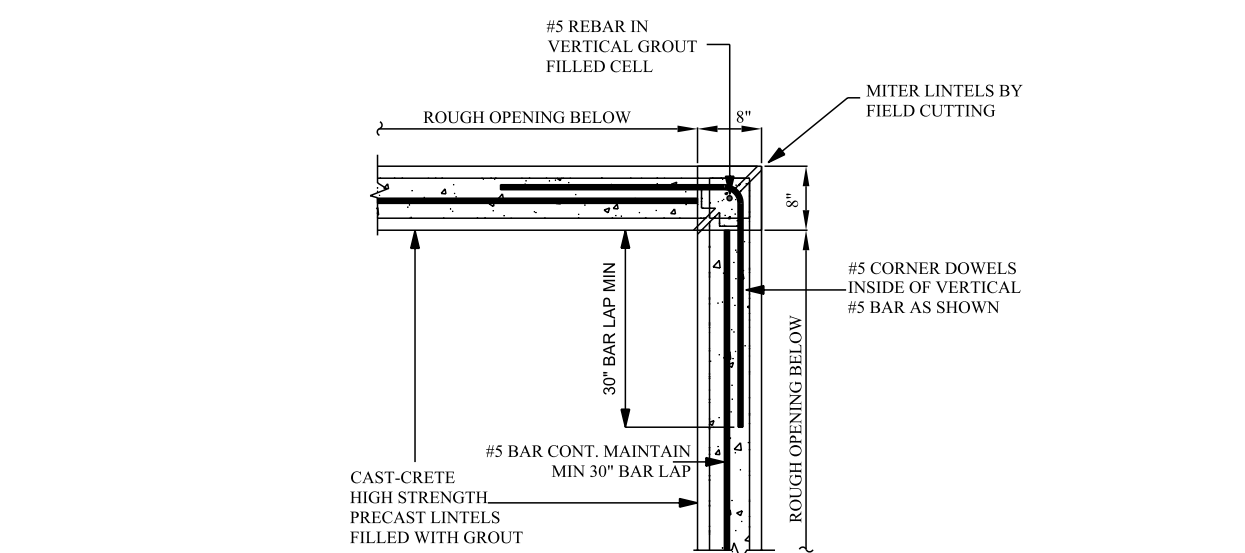


### SAFE LOAD TABLES

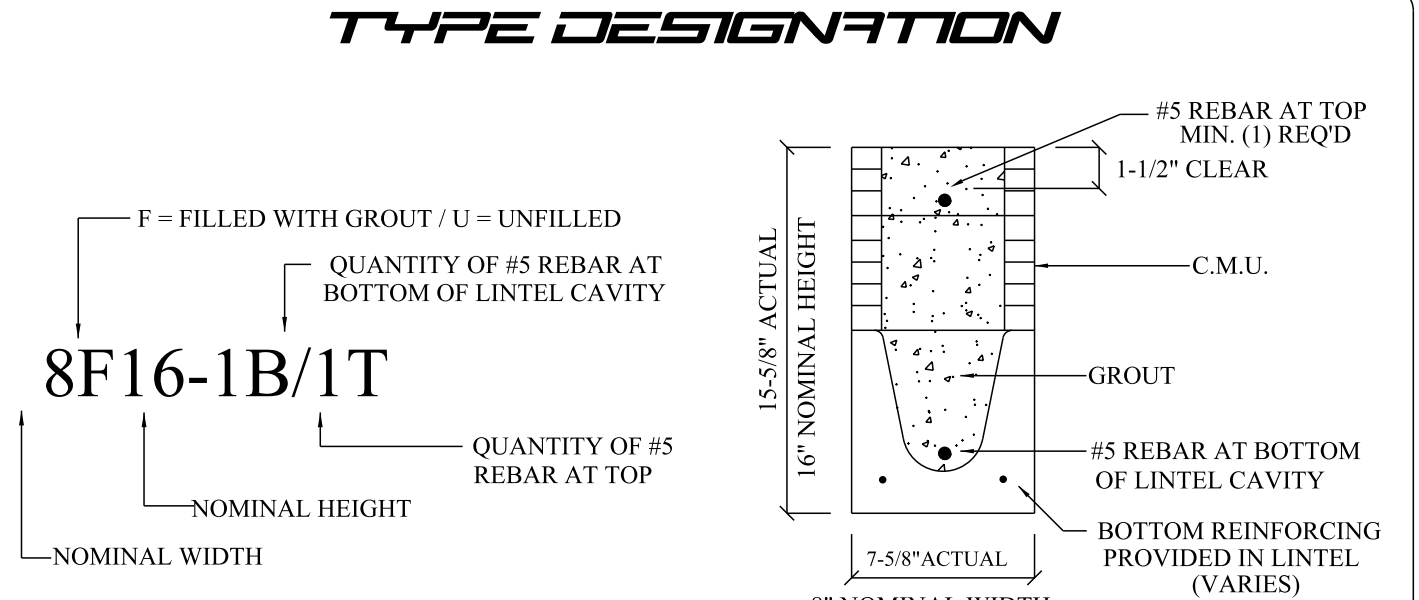
SAFE GRAVITY LOADS FOR 8" PRECAST & PRESTRESSED U-LINTELS				SAFE LATERAL LOADS FOR 8" PRECAST & PRESTRESSED U-LINTELS				SAFE UPLIFT LOADS FOR 8" PRECAST & PRESTRESSED U-LINTELS				
LENGTH	TYPE	SAFE LOAD - POUNDS PER LINEAR FOOT		LENGTH	TYPE	SAFE LOAD PLF		LENGTH	TYPE	SAFE LOAD - POUNDS PER LINEAR FOOT		
2'-10" (34")	PRECAST	2231	1662	2'-10" (34")	PRECAST	1293	1642	2'-10" (34")	PRECAST	1308	1662	
3'-6" (42")	PRECAST	2231	1662	3'-6" (42")	PRECAST	1025	1024	3'-6" (42")	PRECAST	1308	1662	
4'-0" (48")	PRECAST	1966	1365	4'-0" (48")	PRECAST	765	763	4'-0" (48")	PRECAST	1207	1480	
4'-6" (54")	PRECAST	1599	1067	4'-6" (54")	PRECAST	592	591	4'-6" (54")	PRECAST	1006	1250	
5'-4" (64")	PRECAST	1217	811	5'-4" (64")	PRECAST	411	411	5'-4" (64")	PRECAST	809	1024	
5'-10" (70")	PRECAST	1062	704	5'-10" (70")	PRECAST	340	339	5'-10" (70")	PRECAST	699	896	
6'-6" (78")	PRECAST	908	598	6'-6" (78")	PRECAST	507	507	6'-6" (78")	PRECAST	599	791	
7'-6" (90")	PRECAST	743	537	7'-6" (90")	PRECAST	424	424	7'-6" (90")	PRECAST	500	691	
9'-4" (112")	PRECAST	554	427	9'-4" (112")	PRECAST	326	326	9'-4" (112")	PRECAST	424	515	
10'-6" (126")	PRECAST	475	371	10'-6" (126")	PRECAST	284	284	10'-6" (126")	PRECAST	350	441	
11'-4" (136")	PRECAST	362	282	11'-4" (136")	PRECAST	260	260	11'-4" (136")	PRECAST	284	375	
12'-0" (144")	PRECAST	337	260	12'-0" (144")	PRECAST	244	244	12'-0" (144")	PRECAST	250	345	
13'-4" (160")	PRECAST	296	231	13'-4" (160")	PRECAST	217	217	13'-4" (160")	PRECAST	224	315	
14'-0" (168")	PRECAST	279	217	14'-0" (168")	PRECAST	205	205	14'-0" (168")	PRECAST	200	299	
14'-8" (176")	PRESTRESSED	N.R.	N.R.	14'-8" (176")	PRESTRESSED	N.R.	284	89	14'-8" (176")	PRESTRESSED	N.R.	284
15'-4" (184")	PRESTRESSED	N.R.	N.R.	15'-4" (184")	PRESTRESSED	N.R.	259	82	15'-4" (184")	PRESTRESSED	N.R.	259
17'-4" (208")	PRESTRESSED	N.R.	N.R.	17'-4" (208")	PRESTRESSED	N.R.	194	63	17'-4" (208")	PRESTRESSED	N.R.	194
19'-4" (232")	PRESTRESSED	N.R.	N.R.	19'-4" (232")	PRESTRESSED	N.R.	148	51	19'-4" (232")	PRESTRESSED	N.R.	148
21'-4" (256")	PRESTRESSED	N.R.	N.R.	21'-4" (256")	PRESTRESSED	N.R.	125	42	21'-4" (256")	PRESTRESSED	N.R.	125
22'-0" (264")	PRESTRESSED	N.R.	N.R.	22'-0" (264")	PRESTRESSED	N.R.	116	39	22'-0" (264")	PRESTRESSED	N.R.	116
24'-0" (288")	PRESTRESSED	N.R.	N.R.	24'-0" (288")	PRESTRESSED	N.R.	91	33	24'-0" (288")	PRESTRESSED	N.R.	91

(6) THE NUMBERS IN PARENTHESIS ARE PERCENT REDUCTIONS FOR GR40 FIELD ADDED REBAR.  
\* SEE NOTE 18



### SAFE LOAD TABLE NOTES

- All values based on minimum 4 inch nominal bearing.
- Exception: Safe loads for unfilled lintels must be reduced by 20% if bearing length is less than 6 1/2 inches.
- N.R. = Not Rated
- Safe loads are superimposed allowable loads.
- Safe loads based on grade 40 or grade 60 field rebar.
- One #7 rebar may be substituted for two #5 rebars in 8" lintels only.
- The designer may evaluate concentrated loads from the safe load tables by calculating the maximum resisting moment and shear at d-away from face of support.
- For composite lintel heights not shown, use safe load from next lower height shown.
- For lintels lengths not shown, use safe load from next longest length shown.
- All safe loads in units of pounds per linear foot
- All safe loads based on simply supported span.
- The number in the the parenthesis indicates the percent reduction for grade 40 field added rebar.
- Example 7'-6" lintel type 8F32-1B safe gravity load = 6472 <sup>(15)</sup> w/ 15% reduction 6472 (.85) = 5501 plf



- ### MATERIALS
1. Fc 8" precast lintel = 3500 psi
  2. Fc prestressed lintel = 6000 psi
  3. Grout per ASTM C476 f<sub>c</sub> = 3000 psi w/ maximum 3/8 inch aggregate & 8 to 11 inch slump
  4. Concrete Masonry Units (CMU) per ASTM C90 w/minimum net area compressive strength = 1900 psi
  5. Rebar per ASTM A615 grade 60
  6. Prestressing strand per ASTM A416 grade 270 low relaxation
  7. Mortar per ASTM C270 type M or S

- ### GENERAL NOTES
1. Provide full mortar bed and head joints.
  2. Shore filled lintels as required.
  3. Installation of lintel must comply with the architectural and/or structural documents.
  4. U-Lintels are manufactured with 5 1/2" long notches at the ends to accommodate vertical cell reinforcing and grouting.
  5. Reference the CAST-CRETE Load Deflection Graph brochure for lintel deflection information.
  6. Bottom field added rebar to be located at the bottom of the lintel cavity.
  7. 7/32" diameter wire stirrups are welded to the bottom steel for mechanical anchorage.
  8. Cast-in-place concrete may be provided in composite lintel in lieu of concrete masonry units.
  9. Safe load rating based on rational design analysis per ACI 318 and ACI 530
  10. Product Approvals: Miami-Dade County, Florida Nos. 03-0606.05 & 03-0605.04, Florida Certificate of Product Approval number FL158.
  11. The exterior surface of lintels installed in exterior concrete masonry walls shall have a coating of stucco applied in accordance with ASTM C-296 or other approved coating.
  12. Lintels loaded simultaneously with vertical (gravity or uplift) and horizontal (lateral) loads should be checked for the combined loading with the following equation:  
Applied vertical load + Applied horizontal load ≤ 1.0 Safe vertical load + Safe horizontal load
  13. Additional lateral load capacity can be obtained by the designer by providing additional reinforced concrete masonry above the lintel. See detail at right:

WRITTEN DIMENSIONS ON THESE DOCUMENTS SHALL TAKE PRECEDENCE OVER ALL SCALED DIMENSIONS. CONTRACTORS ARE TO VERIFY AND BE RESPONSIBLE FOR ALL DIMENSIONAL SETBACKS & CONDITIONS AT THE JOB SITE. ENGINEER/DESIGNER SHALL BE NOTIFIED OF ANY VARIATIONS IN DIMENSIONS, SETBACKS AND/OR CONDITIONS BEFORE SAID CONSTRUCTION IS AUTHORIZED. SHOP DRAWINGS SHALL BE MARKED "REVIEWED BY THE ENGINEER/DESIGNER" BEFORE FABRICATION OF PARTS IS APPROVED.

**GREEN DESIGN**  
GREEN DESIGN CONSTRUCTION & DEVELOPMENT, LLC  
ADAM H. GREENWELL, P.E. #40290  
1883 BAYVIEW BLVD. SUITE 210  
4400 SE KUBIN AVE. SUITE 470, FORT LAUDERDALE, FL 33306  
WWW.GDCFLORIDA.COM

**CRESHWELL**  
FLORIDA PROFESSIONAL ENGINEERING  
No. 40940  
STATE OF FLORIDA

### SHEET DETAILS

- SECTION DETAILS
- CMU COLUMN AND BEAM
- LINTEL DETAILS
- LINTEL SCHEDULE
- SAFE LOAD TABLES

### REVISION DATE

### CLIENT:

MCHARDY INVESTMENTS  
432 SE MLK BLVD  
STUART, FL 34994  
PIN# 04-38-41-015-009-00010-0

### PROJECT:

M.C.'S GRILLE & OFFICE

**DRAWN**  
S.M.K.

**CHECKED**  
JK

**DATE**  
April 18, 2014

**SCALE**  
AS NOTED

**JOB NO.**  
MCH-2013-48

**SHEET**  
**S-3**

