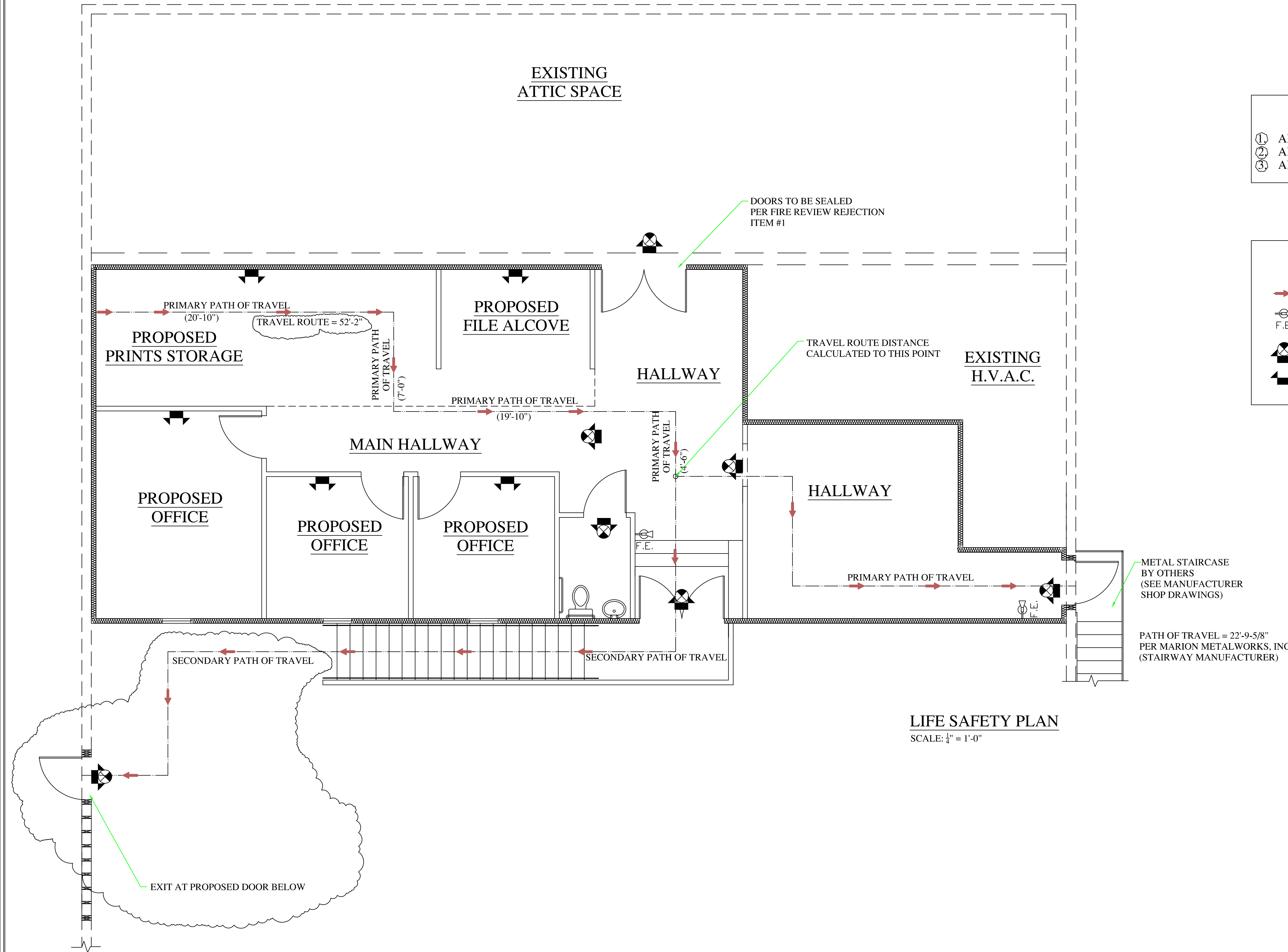


- SCOPE OF WORK**
- ① ADD EMERGENCY LIGHT AND EXIT SIGN W/ BATTERY PACK.
 - ② ADD EMERGENCY LIGHT W/ BATTERY PACK.
 - ③ ADD PORTABLE FIRE EXTINGUISHER.

- LEGEND**
- PATH OF TRAVEL
 - NEW FIRE EXTINGUISHER WITH WALL BRACKET
 - NEW EMERGENCY LIGHT & EXIT SIGN WITH BATTERY PACK
 - NEW EMERGENCY LIGHT WITH BATTERY PACK



ENGINEERING BY:
Julius A. Collins, P.E. (352.288.1309)
CAD DRAWINGS BY:
A & A Design of Central Florida, LLC
(352.239.1011)

LIFE SAFETY PLAN

FloorMasters - The Villages
9599 N. U.S. 301, Wildwood
Parcel Id. #: D29-008

REV:
05/27/2014

Page:
3 OF 5

JULIUS A. COLLINS, P.E.
P.O. Box 332
Ocala, FL 32183-0332
PROJECT ENGINEER OF RECORD
TO THE BEST OF MY KNOWLEDGE, THESE PLANS AND PROJECT SPECIFICATIONS COMPLY WITH THE MINIMUM APPLICABLE STATE OF FLORIDA BUILDING CODE (FBC 2010), AND LOCAL AREA BUILDING CODES AND ORDINANCES WITH RESPECT TO CURRENT ENGINEERING PRACTICES.

JULIUS A. COLLINS, P.E.
Florida Registration No. 7084
DATE _____

NOT VALID WITHOUT RAISED SEAL