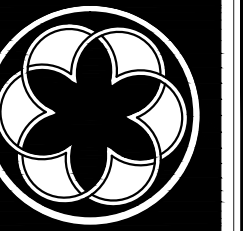


NORTH TRAIL RV CENTER



606 PRESIDENTIAL COURT
SUITE 400
FT. MYERS, FLORIDA 33909
PHONE 888-237-1960
FAX 239-337-9796

Gensdorf & Gensdorf, Inc.
Architects
AS 000039

REVISION
04-10-15
PER CITY COMMENT

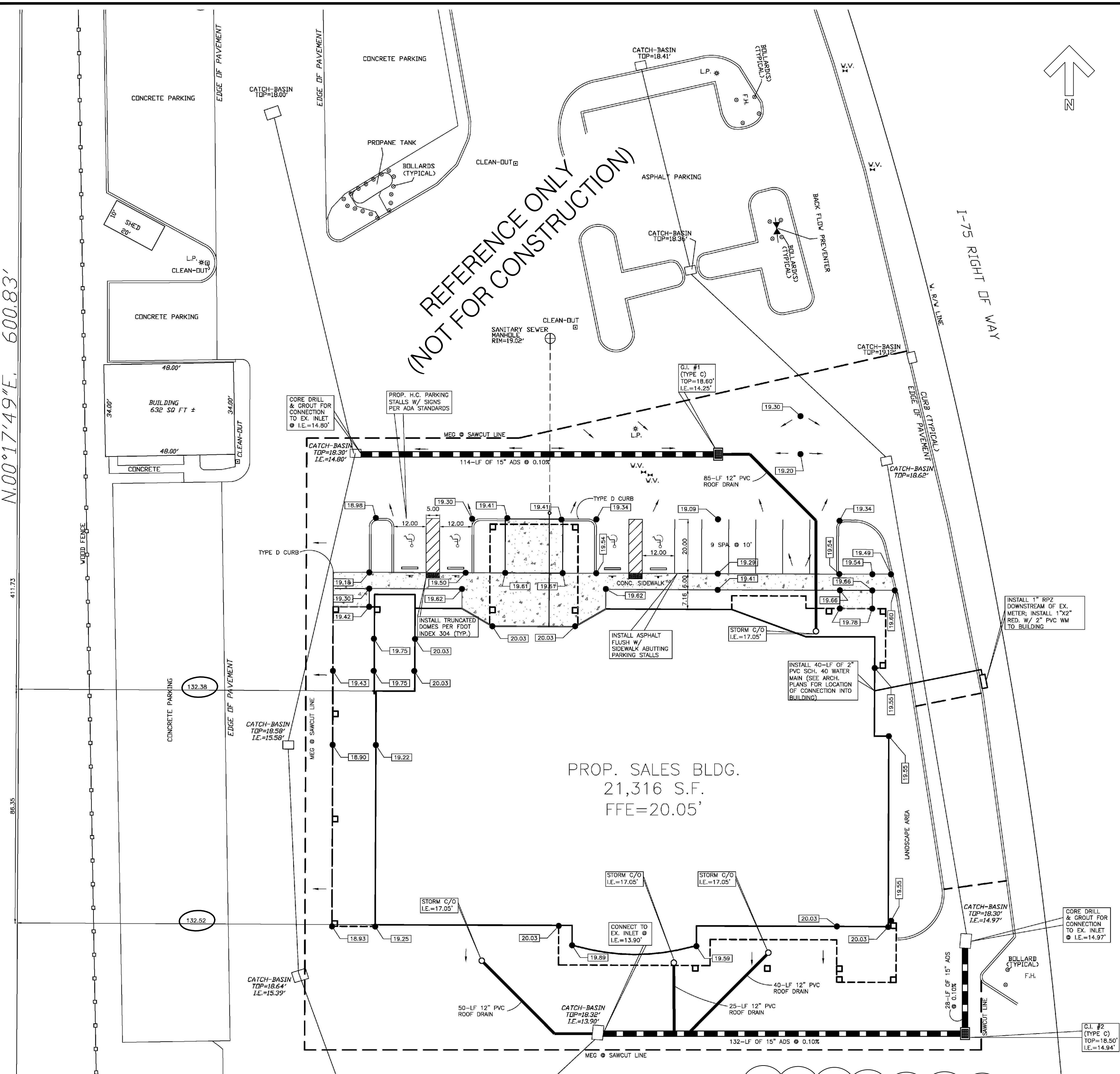
NORTH TRAIL RV CENTER
5270 ORANGE RIVER BLVD., FORT MYERS, FL 33905

COVER SHEET

GREGORY W. GRESHOCK
ARCHITECT
FLORIDA REG. NO. 13-5330

CS-1

SITE PLAN NOT TO SCALE



GENERAL NOTES

- ALL WORK SHALL CONFORM WITH ALL APPLICABLE LOCAL, STATE AND FEDERAL CODES AND ORDINANCES. AND ALL AUTHORITIES HAVING LOCAL JURISDICTION.
- ALL DIMENSIONS ARE TAKEN FROM THE ROUGH UNLESS NOTED OTHERWISE.
- ALL NOTED DIMENSIONS SHALL GOVERN OVER SCALED DIMENSIONS.
- GENERAL CONTRACTORS AND SUBCONTRACTORS SHALL VERIFY ALL DIMENSIONS AND SITE CONDITIONS BEFORE COMMENCING THE WORK. DISCREPANCIES SHALL BE BROUGHT TO THE ATTENTION OF THE ARCHITECT AND ENGINEER PRIOR TO PROCEEDING WITH THE WORK.
- THE GENERAL CONTRACTOR AND SUBCONTRACTORS SHALL PROTECT THE WORK AND ADJACENT PROPERTY AT ALL TIMES DURING CONSTRUCTION AND MUST PROVIDE ALL NECESSARY GUARDS, RAILINGS, LIGHTS, WARNING SIGNS, ETC., DURING THE PROGRESS OF THE WORK.
- EXISTING UTILITIES WITHIN AND BEYOND THE BUILDING LINE OF CONSTRUCTION SHALL BE PROTECTED, RELOCATED, OR REPAIRED AS NECESSARY TO ACCOMMODATE NEW CONSTRUCTION.
- THESE DRAWINGS ARE SUBJECT TO BUILDING DEPARTMENT REVIEW NOTATIONS AND REVISIONS, AS SHOWN ON SIGNED, APPROVED DRAWINGS. VERIFY PRIOR TO COMMENCING THE WORK.

ACCESSIBILITY NOTES

CHANGES IN LEVEL AT DOOR THRESHOLDS BETWEEN 1/4" AND 1/2". EDGE SHALL BE BEVELED WITH A SLOPE NO GREATER THAN 1/2" WITH MAXIMUM 1/2" THRESHOLD. DOOR CLEARANCES FOR FRONT APPROACH & PULL SIDE, PROVIDE 18" BEYOND LATCH SIDE OF DOOR; 60" PERPENDICULAR TO DOOR WAY. DOOR HANDLES, PULLS, LATCHES, LOCKS AND OTHER OPERATING DEVICES SHALL HAVE A SHAPE THAT IS EASY TO GRASP WITH ONE HAND AND DOES NOT REQUIRE TIGHT GRASPING, TIGHT PINCHING, OR TWISTING OF THE WRIST TO OPERATE. CONTRACTOR TO PROVIDE ALL HANDICAPPED TOILET FIXTURES AND ACCESSORIES PER CODE. CONTRACTOR TO MAINTAIN 60" DIAMETER CLEARANCE MINIMUM TO ALL FINISH SURFACES WHERE INDICATED ON THE DRAWINGS.

* MINIMUM 36" DOOR LEAF AS REQUIRED FOR EXIT
* EXITS SHALL BE MARKED BY AN APPROVED SIGN AND READILY VISIBLE FROM ANY DIRECTION OF EXIT ACCESS.
* EMERGENCY LIGHTING SHALL BE PROVIDED
* ONE PORTABLE FIRE EXTINGUISHER TO BE PROVIDED FOR EVERY 1,500 SF OF FLOOR AREA OR PORTION THEREOF

* SITE PLAN SHALL BE DESIGNED TO PROVIDE 'ADA' COMPLIANCE BETWEEN GUEST PARKING AND MAIN ENTRANCE TO BUILDING AND H.C. ACCESSIBILITY TO ALL REQUIRED EGRESS DOORS.

BUILDING DATA

BUILDING DATA:
OCCUPANCY CLASSIFICATION: BUSINESS, GROUP 'B'
CONSTRUCTION TYPE: II-B, UNSPRINKLERED
ALLOWABLE AREA: 23,000 SF (21,310 SF ACTUAL)
ALLOWABLE STORIES: 4 (1 ACTUAL)
OCCUPANT LOAD PER FCB: 100 SF GROSS/OCC.
21,310 SF/100 SF = 214 PERSONS

L. D. O. MAX. SF = 21,350 SF
ACTUAL SF = 21,310 SF

BUILDING DATA FOR MEZZANINE
PER FBC 502.1 AND 505.5.1
AREA OF BUILDING = 21,310 SF
OPEN AREA OF FLOOR = 14,546 SF
14,556 SF/3 = 4,848 SF ALLOWABLE MEZZANINE ACTUAL = 4,220 SF
PER LIFE SAFETY CODE (LSC) 8.6.9, SAME AREA REQUIREMENTS AS FBC
4,848 SF ALLOWABLE MEZZANINE ACTUAL = 4,220 SF

1-HOUR PROTECTED FLOOR, WALLS, EXIT TO STAIRWAY
INTERIOR FINISH CLASSIFICATION CLASS A.B. OR C.
TRAVEL DISTANCE FOR BUSINESS OCCUPANCY:
COMMON PATH: 75' MAX, 47' ACTUAL
DEAD-END: 20' MAX, 8' ACTUAL
TRAVEL DISTANCE: 200' MAX, 87' ACTUAL

PROJECT DATA SUMMARY

- APPLICABLE CODES:
 FLORIDA BUILDING CODE, 2010 BUILDING
 FLORIDA BUILDING CODE, 2010 MECHANICAL
 FLORIDA BUILDING CODE, 2010 PLUMBING
 FLORIDA BUILDING CODE, 2010 ENERGY CONSERVATION
 FLORIDA BUILDING CODE, 2010 ACCESSIBILITY
 2010 FLORIDA FIRE PREVENTION CODE
 2010 NATIONAL ELECTRICAL CODE
 NATIONAL FIRE PROTECTION CODE, NFPA 101 (LIFE SAFETY)
 NATIONAL FIRE PROTECTION CODE, NFPA 13 (FIRE SPRINKLERS)
 NATIONAL FIRE PROTECTION CODE, NFPA 72
- BUILDING OCCUPANCY CLASSIFICATION:
 GROUP A - ASSEMBLY
 GROUP B - BUSINESS
 GROUP D - DAY CARE CENTER
 GROUP E - EDUCATIONAL
 GROUP F - FACTORY INDUSTRIAL
 GROUP H - HAZARDOUS
 GROUP I - INSTITUTIONAL
 GROUP M - MERCANTILE
 GROUP R - RESIDENTIAL
 GROUP S - STORAGE
- BUILDING CONSTRUCTION TYPE:
 TYPE I-A
 TYPE I-B
 TYPE II-B
 TYPE III-A
 TYPE III-B
 TYPE IV
 TYPE V-A
 TYPE V-B
 UNSPRINKLERED
- CLASSIFICATION OF WORK:
 NEW BUILDING
 ADDITIONS
 HISTORIC BUILDINGS
 RELOCATED BUILDINGS
 ALTERATION
- RISK CATEGORY:
 I
 II
 III
 IV
- WIND LOADS:
(WIND LOADS ARE BASED ON CH. 26 TRU 30 OF ASCE 7)
 162 MPH-ULTIMATE DESIGN WIND SPEED (3-SECOND GUST)
 124 MPH-NOMINAL DESIGN WIND SPEED (FASTEST MILE)
- WIND SPEED:
 162 MPH-ULTIMATE DESIGN WIND SPEED (3-SECOND GUST)
 124 MPH-NOMINAL DESIGN WIND SPEED (FASTEST MILE)
- EXPOSURE CATEGORY:
 A
 B
 C
 D
- WINDBORNE DEBRIS REGION:
 NO
 YES
- INTERNAL PRESSURE COEFFICIENTS:
 0.00 (OPEN)
 +0.18, -0.18 (ENCLOSED)

GENERAL BLDG. LIMITATIONS

FIRE RESISTANCE RATING REQUIREMENTS FOR EXTERIOR WALLS
(BASED ON FIRE SEPARATION DISTANCE (HOURS) (TABLE 702))

FIRE SEPARATION DISTANCE (FEET)	TYPE OF CONSTRUCTION	GROUP B	N	E	W	S
< 5	I-A, I-B, III-A, III-B, IV OTHERS	3	-	-	-	-
>= 5	I-A, I-B, III-A, III-B, IV OTHERS	2	-	-	-	-
< 10	I-A, I-B, III-A, III-B, IV OTHERS	1	-	-	-	-
>= 10	I-A, I-B, III-A, III-B, IV OTHERS	0	-	-	-	-
< 20	I-A, I-B, III-A, III-B, IV OTHERS	1	-	-	-	-
>= 20	I-A, I-B, III-A, III-B, IV OTHERS	0	-	-	-	-
<= 30	I-A, I-B, III-A, III-B, IV OTHERS	0	-	-	-	-
> 30	ALL	0	-	-	-	-

MAXIMUM AREA OF EXTERIOR WALL OPENINGS (TABLE 704.6)

CLASSIFICATION OF OPENING	FIRE SEPARATION DISTANCE			
	GREATER THAN 3 TO 5	GREATER THAN 5 TO 10	GREATER THAN 10 TO 15	GREATER THAN 15 TO 20
UNPROTECTED	NOT PERMITTED	NOT PERMITTED	10%	15%
PROTECTED	NOT PERMITTED	15%	25%	45%

GENERAL BUILDING LIMITATIONS

CLASSIFICATION OF OPENING	GREATER THAN 15 TO 20	GREATER THAN 20 TO 25	GREATER THAN 25 TO 30	GREATER THAN 30
UNPROTECTED	25%	45%	70%	NO LIMIT
PROTECTED	75%	NO LIMIT	NO LIMIT	NO LIMIT

FIRE PROTECTION CALCULATIONS

BUILDING 1 (LARGEST)
TYPE I NON-COMBUSTIBLE BUILDING PER NFPA 220. TYPES OF BUILDING CONSTRUCTION TOTAL FIRE FLOW AREA PER 18.4.4.1 = 25,530 SF
BASED ON NFPA 1, CHAPTER 18, SECTION 18.4.5.2, TABLE 18.4.5.1.2
PER TABLE FOR TYPE II (000) MINIMUM REQUIRED FIRE FLOW = 3200 GPM @ 20 PSI RESIDUAL FIRE FLOW TEST PERFORMED ON 4/22/15, BY TICE FIRE & RESCUE DISTRICT. PRESSURE 68 PSI AND RESIDUAL PRESSURE 60 PSI FIRE FLOW AVAILABLE TO SITE 5755 GPM @ 20 PSI. THEREFORE, NO SPRINKLER SYSTEM WILL BE REQUIRED.

FIRE FLOW TEST RESULT

TICE FIRE & RESCUE DISTRICT
9351 Workmen Way
Ft. Myers, FL 33905

FIRE FLOW TEST

DATE: 04/02/15 TIME: 14:30hrs

HYDRANT #1: Lexington Ave and Orange River Blvd
HYDRANT #2: 5270 Orange River Blvd (Rear of building)

STATIC PRESSURE	PITOT PRESSURE	GALLONS PER MINUTE	TOTAL
70			
60	68	1384	1384
55	46	1138	
	24	822	1960

COEFFICIENT RATE OF DISCHARGE = .9
S-R2.54/S-R1.54

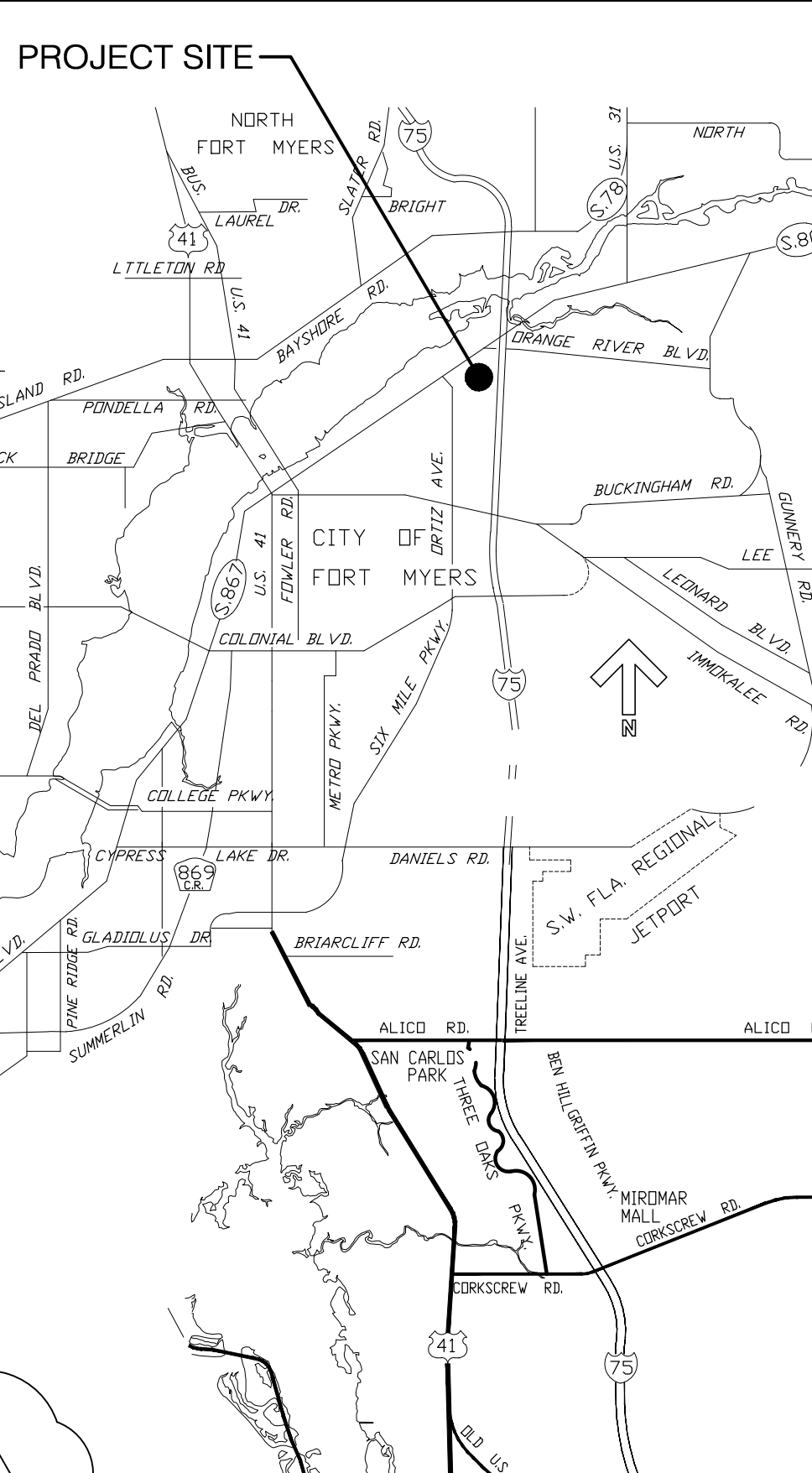
CALCULATED FLOW AT 20 P.S.I. RESIDUAL = 3755 G.P.M.

TEST CONDUCTED BY: Williams/ C shift

COMMENTS: Attr: fireflow for 5270 Orange River Blvd, (North Trail RV)

SIGNATURE: _____
ANY QUESTIONS CALL 684-2380

VICINITY MAP



COMPLIANCE STATEMENT

PLANS HAVE BEEN PREPARED IN COMPLIANCE WITH THE 2010 FLORIDA BUILDING CODE - BUILDING.
ALL ELECTRICAL WORK SHALL COMPLY WITH THE NATIONAL ELECTRICAL CODE 2010 EDITION.
STRUCTURES UNDERGOING CONSTRUCTION, ALTERATION OR DEMOLITION OPERATIONS, INCLUDING THOSE IN UNDERGROUND LOCATIONS, SHALL COMPLY WITH NFPA 241 - STANDARD FOR SAFEGUARDING CONSTRUCTION, ALTERATION, AND DEMOLITION OPERATIONS AND THIS CHAPTER, FPFC NFPA 1 (2010), CHAPTER 16.