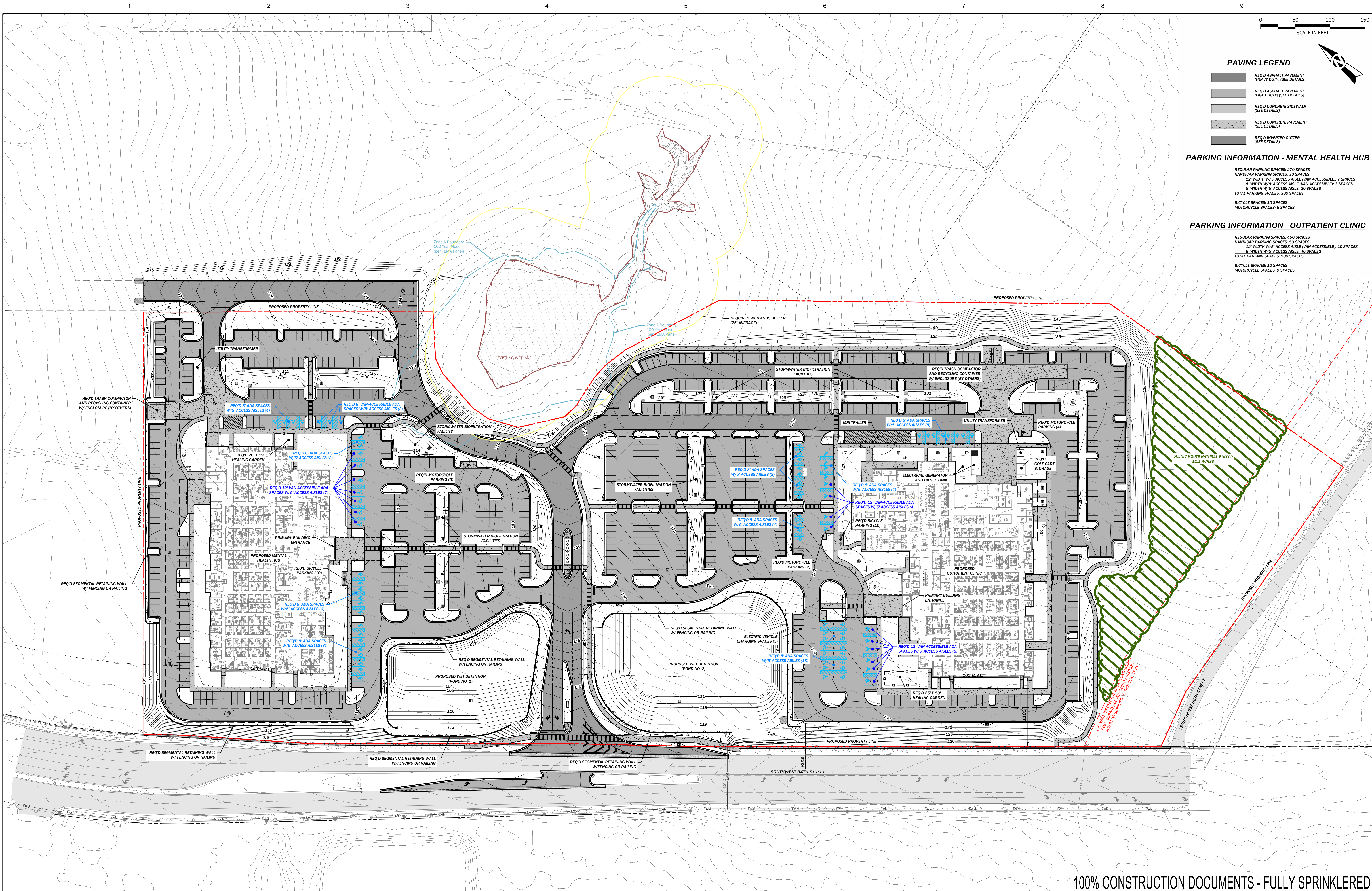


three inches = one foot
one and one half inches = one foot
one inch = one foot
three quarters inch = one foot
one half inch = one foot
three eighths inch = one foot
one quarter inch = one foot
one eighth inch = one foot



PAVING LEGEND

- REQ'D ASPHALT PAVEMENT (HEAVY DUTY) (SEE DETAILS)
- REQ'D ASPHALT PAVEMENT (LIGHT DUTY) (SEE DETAILS)
- REQ'D CONCRETE SIDEWALK (SEE DETAILS)
- REQ'D CONCRETE PAVEMENT (SEE DETAILS)
- REQ'D INVERTED GUTTER (SEE DETAILS)

PARKING INFORMATION - MENTAL HEALTH HUB

REGULAR PARKING SPACES: 270 SPACES
HANDICAP PARKING SPACES: 30 SPACES
12' WIDTH W/5' ACCESS AISLE (VAN ACCESSIBLE): 7 SPACES
8' WIDTH W/5' ACCESS AISLE (VAN ACCESSIBLE): 3 SPACES
8' WIDTH W/5' ACCESS AISLE: 20 SPACES
TOTAL PARKING SPACES: 300 SPACES
BICYCLE SPACES: 10 SPACES
MOTORCYCLE SPACES: 5 SPACES

PARKING INFORMATION - OUTPATIENT CLINIC

REGULAR PARKING SPACES: 450 SPACES
HANDICAP PARKING SPACES: 50 SPACES
12' WIDTH W/5' ACCESS AISLE (VAN ACCESSIBLE): 10 SPACES
8' WIDTH W/5' ACCESS AISLE: 40 SPACES
TOTAL PARKING SPACES: 500 SPACES
BICYCLE SPACES: 10 SPACES
MOTORCYCLE SPACES: 9 SPACES

CONSULTANTS:

BL HARBERT INTERNATIONAL, LLC
DESIGN PROGRAM MANAGER - BL HARBERT INTERNATIONAL, LLC

ARCHITECT/ENGINEERS:

CIVIL ENGINEER - TTL, INC.
LANDSCAPE ARCHITECT - GOODWYN MILLS AND CAWOOD, INC.
ARCHITECT - GOODWYN MILLS AND CAWOOD, INC.
INTERIOR DESIGN - GOODWYN MILLS AND CAWOOD, INC.
MECHANICAL ENGINEERING - I C THOMASSON ASSOCIATES, INC.
ELECTRICAL ENGINEERING - I C THOMASSON ASSOCIATES, INC.
FIRE PROTECTION ENGINEERING - I C THOMASSON ASSOCIATES, INC.
STRUCTURAL ENGINEERING - TUCKER-JONES ENGINEERS ASSOCIATES, INC.

Drawing Title

SITE PLAN

Approved: Project Director

100% CONSTRUCTION DOCUMENTS - FULLY SPRINKLERED

Project Title
**DEPARTMENT OF
VETERANS AFFAIRS**

Location
GAINESVILLE, FL

Date
15 MAY 2020

Checked
JAM

Drawn
JCL

Project Number
36C10F18R0683

Building Number

Drawing Number
C1.0

Office of
Construction
and Facilities
Management

VA | U.S. Department
of Veterans Affairs