

DOOR SCHEDULE						
MK	SIZE	TYP.	FRAME	MAT.	HW. DOOR	REMARKS
W	HT.	THK.			GRP. TYPE	
1	3'-0" x 6'-8"	1/2" EXT.	WOOD	WOOD	STD.	DECOR.
2	2'-0" x 6'-8"	1/2" INT.	WOOD	WOOD	STD.	FLUSH
3	2'-8" x 6'-8"	1/2" INT.	WOOD	WOOD	STD.	FLUSH
4	6'-0" x 6'-8"	1/2" EXT.	METAL	METAL	STD.	DECOR.
5	2'-8" x 6'-8"	3/4" INT.	GLASS	GLASS	STD.	FLUSH
6	2'-8" x 6'-8"	3/4" INT.	GLASS	GLASS	STD.	FLUSH
7	2'-8" x 6'-8"	3/4" INT.	GLASS	GLASS	STD.	FLUSH
8	2'-8" x 6'-8"	3/4" INT.	GLASS	GLASS	STD.	FLUSH
9	2'-8" x 6'-8"	3/4" INT.	GLASS	GLASS	STD.	FLUSH
10	2'-8" x 6'-8"	3/4" INT.	GLASS	GLASS	STD.	FLUSH
11	2'-8" x 6'-8"	3/4" INT.	GLASS	GLASS	STD.	FLUSH
12	2'-8" x 6'-8"	3/4" INT.	GLASS	GLASS	STD.	FLUSH
13	2'-8" x 6'-8"	3/4" INT.	GLASS	GLASS	STD.	FLUSH
14	2'-8" x 6'-8"	3/4" INT.	GLASS	GLASS	STD.	FLUSH
15	2'-8" x 6'-8"	3/4" INT.	GLASS	GLASS	STD.	FLUSH
16	2'-8" x 6'-8"	3/4" INT.	GLASS	GLASS	STD.	FLUSH
17	2'-8" x 6'-8"	3/4" INT.	GLASS	GLASS	STD.	FLUSH
18	2'-8" x 6'-8"	3/4" INT.	GLASS	GLASS	STD.	FLUSH
19	2'-8" x 6'-8"	3/4" INT.	GLASS	GLASS	STD.	FLUSH
20	2'-8" x 6'-8"	3/4" INT.	GLASS	GLASS	STD.	FLUSH
21	2'-8" x 6'-8"	3/4" INT.	GLASS	GLASS	STD.	FLUSH
22	2'-8" x 6'-8"	3/4" INT.	GLASS	GLASS	STD.	FLUSH
23	2'-8" x 6'-8"	3/4" INT.	GLASS	GLASS	STD.	FLUSH
24	2'-8" x 6'-8"	3/4" INT.	GLASS	GLASS	STD.	FLUSH
25	2'-8" x 6'-8"	3/4" INT.	GLASS	GLASS	STD.	FLUSH
26	2'-8" x 6'-8"	3/4" INT.	GLASS	GLASS	STD.	FLUSH
27	2'-8" x 6'-8"	3/4" INT.	GLASS	GLASS	STD.	FLUSH
28	2'-8" x 6'-8"	3/4" INT.	GLASS	GLASS	STD.	FLUSH
29	2'-8" x 6'-8"	3/4" INT.	GLASS	GLASS	STD.	FLUSH
30	2'-8" x 6'-8"	3/4" INT.	GLASS	GLASS	STD.	FLUSH
31	2'-8" x 6'-8"	3/4" INT.	GLASS	GLASS	STD.	FLUSH
32	2'-8" x 6'-8"	3/4" INT.	GLASS	GLASS	STD.	FLUSH
33	2'-8" x 6'-8"	3/4" INT.	GLASS	GLASS	STD.	FLUSH
34	2'-8" x 6'-8"	3/4" INT.	GLASS	GLASS	STD.	FLUSH
35	2'-8" x 6'-8"	3/4" INT.	GLASS	GLASS	STD.	FLUSH
36	2'-8" x 6'-8"	3/4" INT.	GLASS	GLASS	STD.	FLUSH
37	2'-8" x 6'-8"	3/4" INT.	GLASS	GLASS	STD.	FLUSH
38	2'-8" x 6'-8"	3/4" INT.	GLASS	GLASS	STD.	FLUSH
39	2'-8" x 6'-8"	3/4" INT.	GLASS	GLASS	STD.	FLUSH
40	2'-8" x 6'-8"	3/4" INT.	GLASS	GLASS	STD.	FLUSH
41	2'-8" x 6'-8"	3/4" INT.	GLASS	GLASS	STD.	FLUSH
42	2'-8" x 6'-8"	3/4" INT.	GLASS	GLASS	STD.	FLUSH
43	2'-8" x 6'-8"	3/4" INT.	GLASS	GLASS	STD.	FLUSH
44	2'-8" x 6'-8"	3/4" INT.	GLASS	GLASS	STD.	FLUSH
45	2'-8" x 6'-8"	3/4" INT.	GLASS	GLASS	STD.	FLUSH
46	2'-8" x 6'-8"	3/4" INT.	GLASS	GLASS	STD.	FLUSH
47	2'-8" x 6'-8"	3/4" INT.	GLASS	GLASS	STD.	FLUSH
48	2'-8" x 6'-8"	3/4" INT.	GLASS	GLASS	STD.	FLUSH
49	2'-8" x 6'-8"	3/4" INT.	GLASS	GLASS	STD.	FLUSH
50	2'-8" x 6'-8"	3/4" INT.	GLASS	GLASS	STD.	FLUSH
51	2'-8" x 6'-8"	3/4" INT.	GLASS	GLASS	STD.	FLUSH
52	2'-8" x 6'-8"	3/4" INT.	GLASS	GLASS	STD.	FLUSH
53	2'-8" x 6'-8"	3/4" INT.	GLASS	GLASS	STD.	FLUSH
54	2'-8" x 6'-8"	3/4" INT.	GLASS	GLASS	STD.	FLUSH
55	2'-8" x 6'-8"	3/4" INT.	GLASS	GLASS	STD.	FLUSH
56	2'-8" x 6'-8"	3/4" INT.	GLASS	GLASS	STD.	FLUSH
57	2'-8" x 6'-8"	3/4" INT.	GLASS	GLASS	STD.	FLUSH
58	2'-8" x 6'-8"	3/4" INT.	GLASS	GLASS	STD.	FLUSH
59	2'-8" x 6'-8"	3/4" INT.	GLASS	GLASS	STD.	FLUSH
60	2'-8" x 6'-8"	3/4" INT.	GLASS	GLASS	STD.	FLUSH
61	2'-8" x 6'-8"	3/4" INT.	GLASS	GLASS	STD.	FLUSH
62	2'-8" x 6'-8"	3/4" INT.	GLASS	GLASS	STD.	FLUSH
63	2'-8" x 6'-8"	3/4" INT.	GLASS	GLASS	STD.	FLUSH
64	2'-8" x 6'-8"	3/4" INT.	GLASS	GLASS	STD.	FLUSH
65	2'-8" x 6'-8"	3/4" INT.	GLASS	GLASS	STD.	FLUSH
66	2'-8" x 6'-8"	3/4" INT.	GLASS	GLASS	STD.	FLUSH
67	2'-8" x 6'-8"	3/4" INT.	GLASS	GLASS	STD.	FLUSH
68	2'-8" x 6'-8"	3/4" INT.	GLASS	GLASS	STD.	FLUSH
69	2'-8" x 6'-8"	3/4" INT.	GLASS	GLASS	STD.	FLUSH
70	2'-8" x 6'-8"	3/4" INT.	GLASS	GLASS	STD.	FLUSH
71	2'-8" x 6'-8"	3/4" INT.	GLASS	GLASS	STD.	FLUSH
72	2'-8" x 6'-8"	3/4" INT.	GLASS	GLASS	STD.	FLUSH
73	2'-8" x 6'-8"	3/4" INT.	GLASS	GLASS	STD.	FLUSH
74	2'-8" x 6'-8"	3/4" INT.	GLASS	GLASS	STD.	FLUSH
75	2'-8" x 6'-8"	3/4" INT.	GLASS	GLASS	STD.	FLUSH
76	2'-8" x 6'-8"	3/4" INT.	GLASS	GLASS	STD.	FLUSH
77	2'-8" x 6'-8"	3/4" INT.	GLASS	GLASS	STD.	FLUSH
78	2'-8" x 6'-8"	3/4" INT.	GLASS	GLASS	STD.	FLUSH
79	2'-8" x 6'-8"	3/4" INT.	GLASS	GLASS	STD.	FLUSH
80	2'-8" x 6'-8"	3/4" INT.	GLASS	GLASS	STD.	FLUSH
81	2'-8" x 6'-8"	3/4" INT.	GLASS	GLASS	STD.	FLUSH
82	2'-8" x 6'-8"	3/4" INT.	GLASS	GLASS	STD.	FLUSH
83	2'-8" x 6'-8"	3/4" INT.	GLASS	GLASS	STD.	FLUSH
84	2'-8" x 6'-8"	3/4" INT.	GLASS	GLASS	STD.	FLUSH
85	2'-8" x 6'-8"	3/4" INT.	GLASS	GLASS	STD.	FLUSH
86	2'-8" x 6'-8"	3/4" INT.	GLASS	GLASS	STD.	FLUSH
87	2'-8" x 6'-8"	3/4" INT.	GLASS	GLASS	STD.	FLUSH
88	2'-8" x 6'-8"	3/4" INT.	GLASS	GLASS	STD.	FLUSH
89	2'-8" x 6'-8"	3/4" INT.	GLASS	GLASS	STD.	FLUSH
90	2'-8" x 6'-8"	3/4" INT.	GLASS	GLASS	STD.	FLUSH
91	2'-8" x 6'-8"	3/4" INT.	GLASS	GLASS	STD.	FLUSH
92	2'-8" x 6'-8"	3/4" INT.	GLASS	GLASS	STD.	FLUSH
93	2'-8" x 6'-8"	3/4" INT.	GLASS	GLASS	STD.	FLUSH
94	2'-8" x 6'-8"	3/4" INT.	GLASS	GLASS	STD.	FLUSH
95	2'-8" x 6'-8"	3/4" INT.	GLASS	GLASS	STD.	FLUSH
96	2'-8" x 6'-8"	3/4" INT.	GLASS	GLASS	STD.	FLUSH
97	2'-8" x 6'-8"	3/4" INT.	GLASS	GLASS	STD.	FLUSH
98	2'-8" x 6'-8"	3/4" INT.	GLASS	GLASS	STD.	FLUSH
99	2'-8" x 6'-8"	3/4" INT.	GLASS	GLASS	STD.	FLUSH
100	2'-8" x 6'-8"	3/4" INT.	GLASS	GLASS	STD.	FLUSH

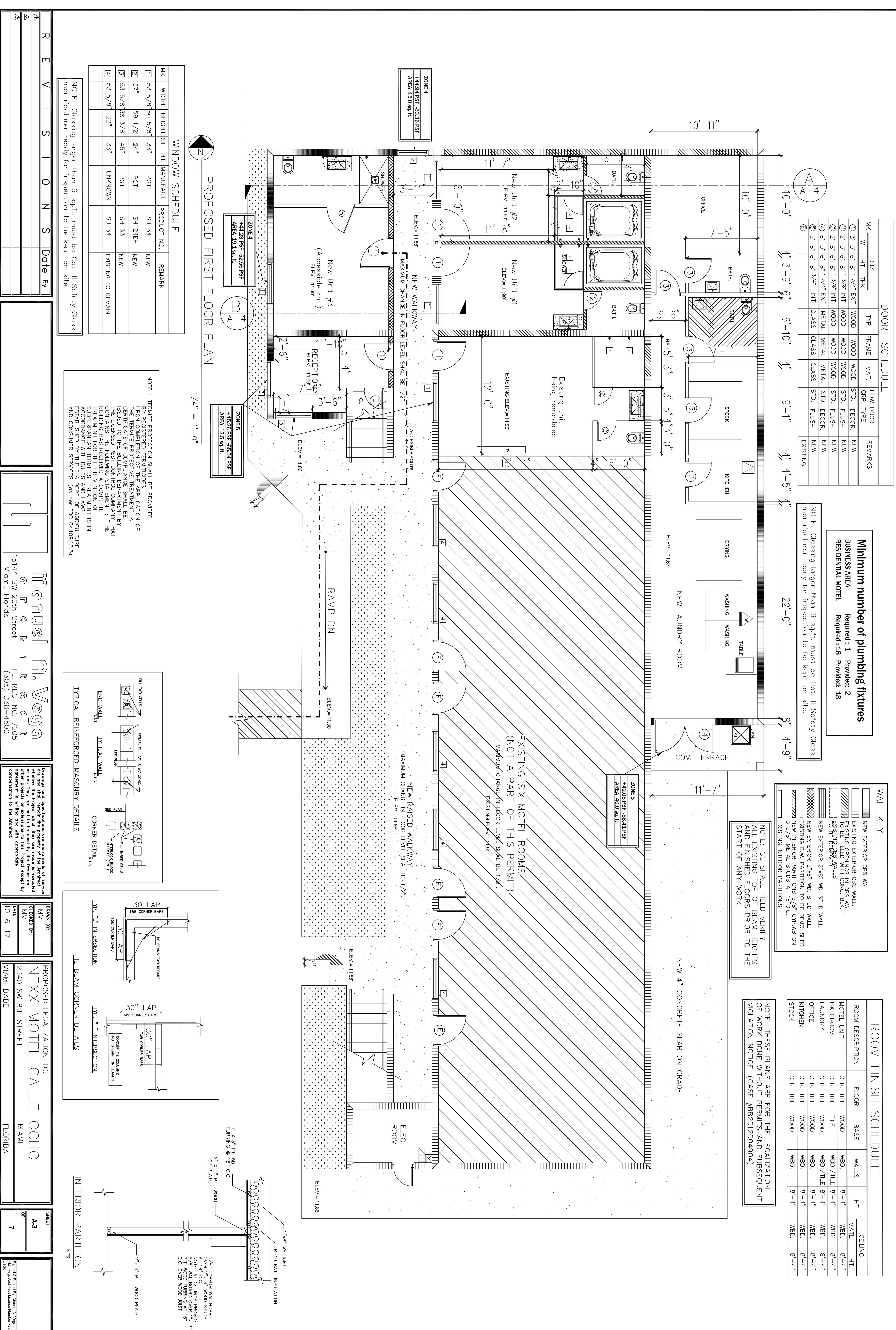
**Minimum number of plumbing fixtures**  
**BUSINESS AREA** Required: 1 Provided: 2  
**RESIDENTIAL MOTEL** Required: 18 Provided: 18

NOTE: Glassing larger than 9 sq. ft. must be Cat. II Safety Glass, manufacturer ready for inspection to be kept on site.

ROOM FINISH SCHEDULE					
ROOM DESCRIPTION	FLOOR	BASE	WALLS	HT.	CEILING
MOTEL UNIT	CER. TILE	WOOD	WBD.	8'-4"	WBD.
BATHROOM	CER. TILE	TILE	WBD./TILE	8'-4"	WBD.
LAUNDRY	CER. TILE	WOOD	WBD./TILE	8'-4"	WBD.
OFFICE	CER. TILE	WOOD	WBD.	8'-4"	WBD.
KITCHEN	CER. TILE	WOOD	WBD.	8'-4"	WBD.
STOCK	CER. TILE	WOOD	WBD.	8'-4"	WBD.

NOTE: THESE PLANS ARE FOR THE LEGALIZATION OF WORK DONE WITHOUT PERMITS AND SUBSEQUENT VIOLATION NOTICE. (CASE #BB2012004904)

NOTE: GC SHALL FIELD VERIFY ALL EXISTING TOP OF BEAM HEIGHTS AND FINISHED FLOORS PRIOR TO THE START OF ANY WORK



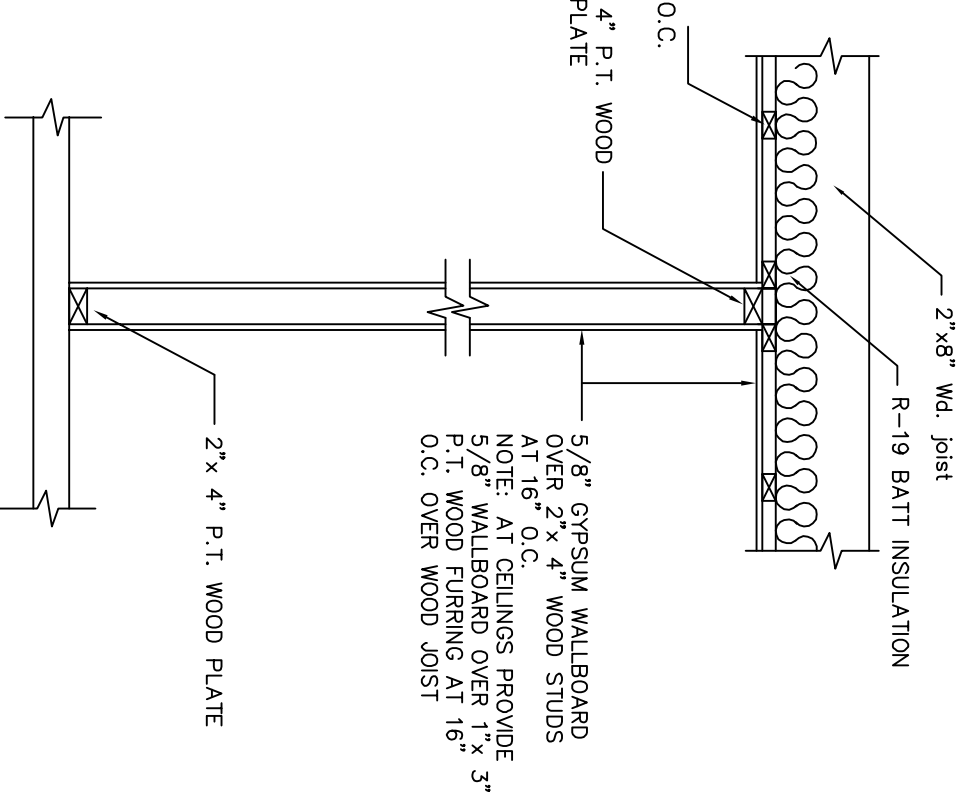
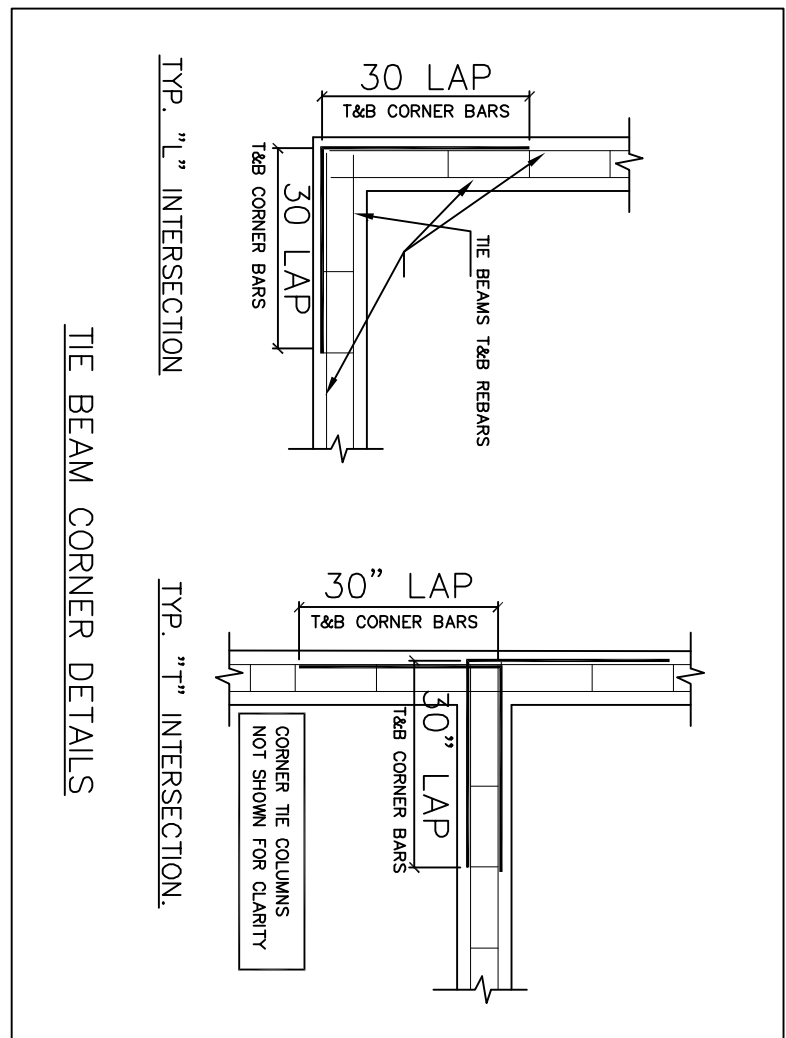
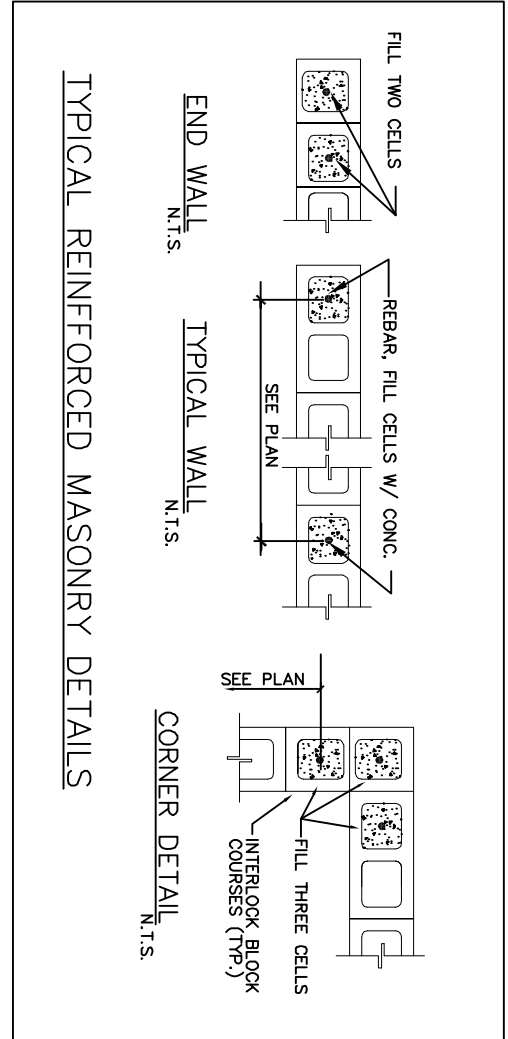
PROPOSED FIRST FLOOR PLAN

1/4" = 1'-0"

WINDOW SCHEDULE						
MK	WIDTH	HEIGHT	SILL HT.	MANUFACT.	PRODUCT NO.	REMARK
1	53 5/8"	50 5/8"	33"	PGT	SH 34	NEW
2	37"	59 1/2"	24"	PGT	SH 24EH	NEW
3	53 5/8"	38 3/8"	45"	PGT	SH 33	NEW
4	53 5/8"	22"	33"	UNKNOW	SH 34	EXISTING TO REMAIN

NOTE: Glassing larger than 9 sq.ft. must be Cat. II Safety Glass, manufacturer ready for inspection to be kept on site.

NOTE: TERMITE PROTECTION SHALL BE PROVIDED BY REGISTERED TERMITE INSPECTORS. APPLICATION OF THE TERMITE PROTECTIVE TREATMENT, A CERTIFICATE OF COMPLIANCE SHALL BE ISSUED TO THE BUILDING DEPARTMENT BY THE LICENSED PEST CONTROL COMPANY THAT CONTAINS THE FOLLOWING STATEMENT: "THE SERVICE PROVIDER HAS INSPECTED THE SUBSTRATE AND FOUND NO EVIDENCE OF TERMITES. TREATMENT IS IN ACCORDANCE WITH RULES AND LAWS ESTABLISHED BY THE FLA DEPT. OF AGRICULTURE AND CONSUMER SERVICES. (as per FBC R44091.3.5)"



REVISION	DATE	DESCRIPTION

DATE	BY

**Manuel R. Vega**  
 Architect  
 15144 SW 20th Street  
 Miami, Florida  
 FL REG. NO. 7205  
 (305) 338-4500

Drawings and Specifications are instruments of service and shall remain the property of the Architect. No reproduction or use of any part of these drawings or other projects or extensions to this project except by agreement in writing and with appropriate compensation to the Architect.

DATE	BY
10-6-17	MV
	MV

PROPOSED LEGALIZATION TO:  
**NEXX MOTEL CALLE OCHO**  
 2340 SW 8th STREET  
 MIAMI  
 FLORIDA

SHEET	OF
A3	7

Structural Specialist, Manuel R. Vega, III  
 P.E. No. 13000  
 Florida Registered Professional Engineer License Number 7205