



ESPASIO DESIGN CORP.

7875 SW 104th Street
 Suite 202
 Miami, Florida 33156
 Tel. 305.702.7993
 www.espaziodesign.com
 AA26002938

**SUITE HOTEL
 CHANGE OF USE**

2150 Park Avenue
 Miami Beach, Florida 33139

Project No. 242-01

**ISSUED FOR:
 VERTICAL ACCESSIBILITY WAIVER**

No. DATE REVISION

DRAWN APPROVED
 DATE SCALE
 06-26-18 AS SHOWN
 CONSULTANTS:

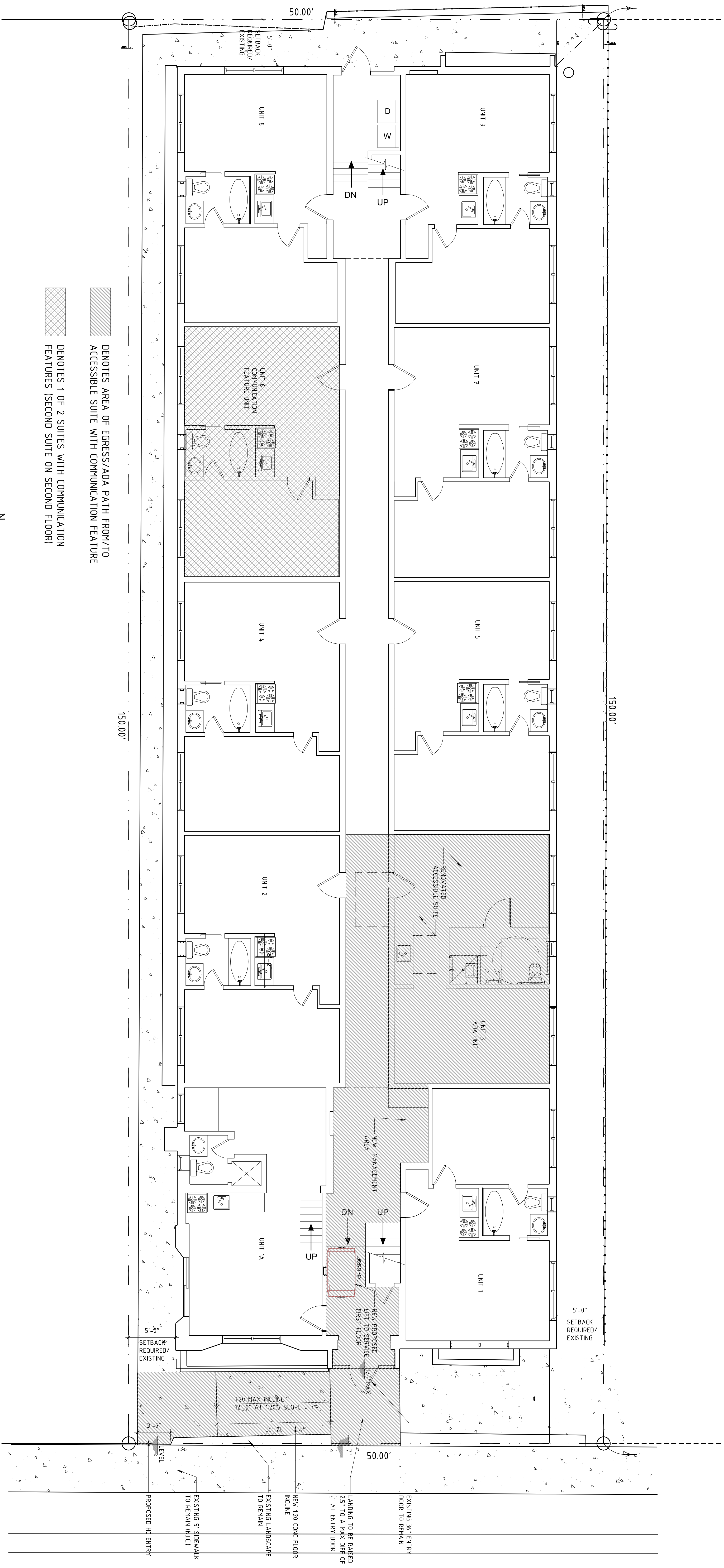
SEAL/SIGNATURE

N. ALEXANDRA CARDENAS-BARRERO,
 R.A. LEED AP
 AR 00944540
 The drawing is the property of
 ESPASIO Design Corp. and is
 not to be reproduced or
 copied in whole or in part
 without the written consent of
 the project and to be returned
 on request.
 COPYRIGHT © 2018

SHEET TITLE

SHEET NUMBER

A-01



- DENOTES AREA OF EGRESS/ADA PATH FROM/TO ACCESSIBLE SUITE WITH COMMUNICATION FEATURE
- DENOTES 1 OF 2 SUITES WITH COMMUNICATION FEATURES (SECOND SUITE ON SECOND FLOOR)

1 SITE PLAN
 A-01
 SCALE: 3/16" = 1'-0"

MOBILITY/COMMUNICATION FEATURE ANALYSIS: 20 UNITS TOTAL AT 2150 PARK AVE			
	REQUIRED	EXISTING CONDITION	PROPOSED
GUEST ROOMS WITH MOBILITY FEATURES PER PER2017 ACCESSIBILITY TABLE 224.2	1-25 ROOMS = 1 REQUIRED (WITHOUT BOLL-IN SHIMMERS)	0 EXISTING	1 PROPOSED
GUEST ROOMS WITH MOBILITY & COMMUNICATION FEATURES PER PER2014 ACCESSIBILITY 224.5	AT LEAST ONE GUESTROOM REQUIRED TO PROVIDE COMMUNICATION FEATURES	0 EXISTING	0 EXISTING
GUEST ROOMS WITH COMMUNICATION FEATURES PER PER2017 ACCESSIBILITY TABLE 224.4	2-25 ROOMS = 2 REQUIRED	0 EXISTING	2 PROPOSED (ASIDE FROM ROOM WITH BOTH MOBILITY/COMM)

NOTE: 1 MOBILITY & COMMUNICATION ACCESSIBLE SUITE AND 2 SUITES WITH COMMUNICATION FEATURES TO BE DISPERSED AROUND THE VARIOUS CLASSES OF GUESTROOMS PER PER 2014 ACCESSIBILITY 224.5 DISPERSION