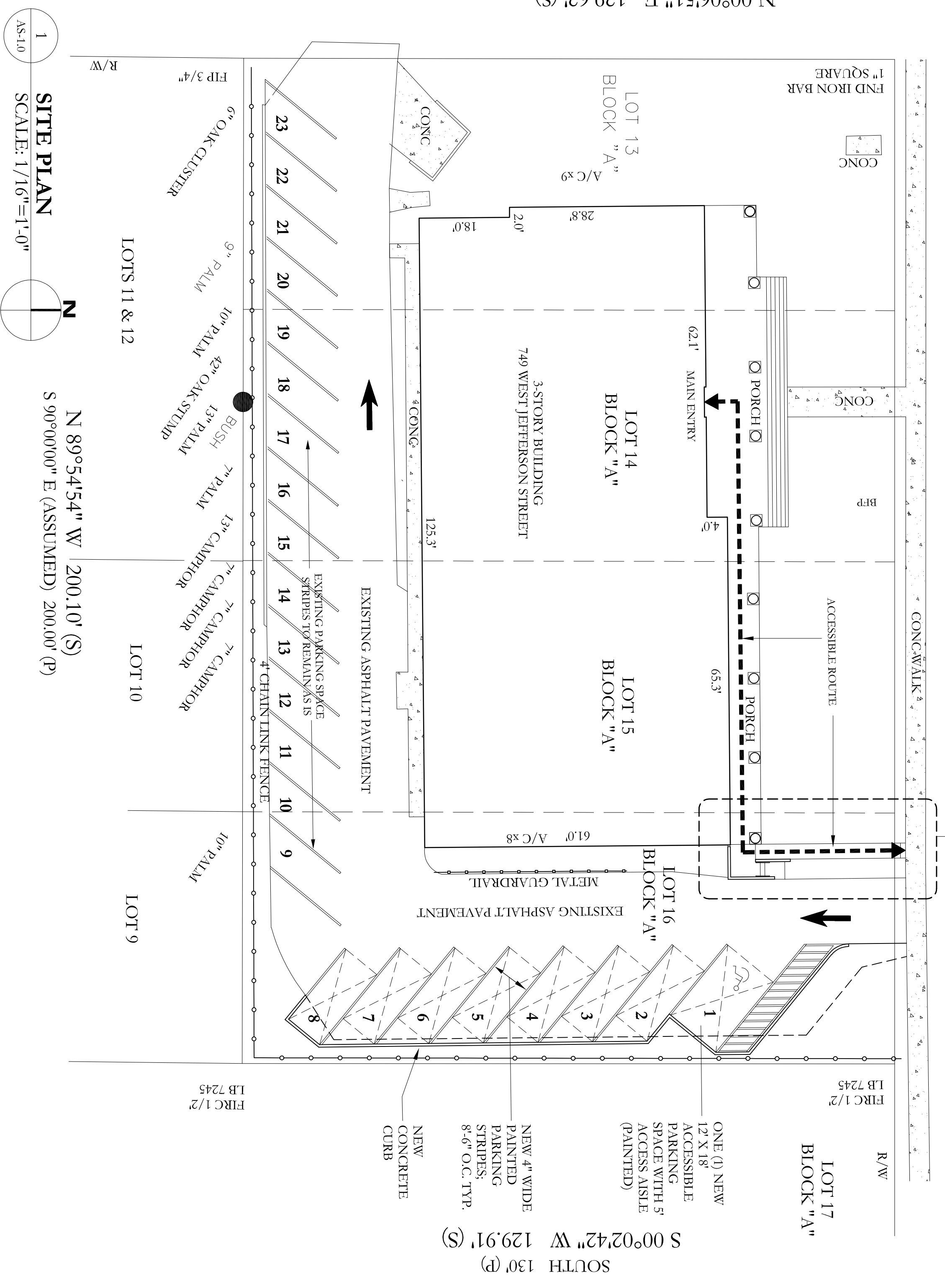


WEST JEFFERSON STREET

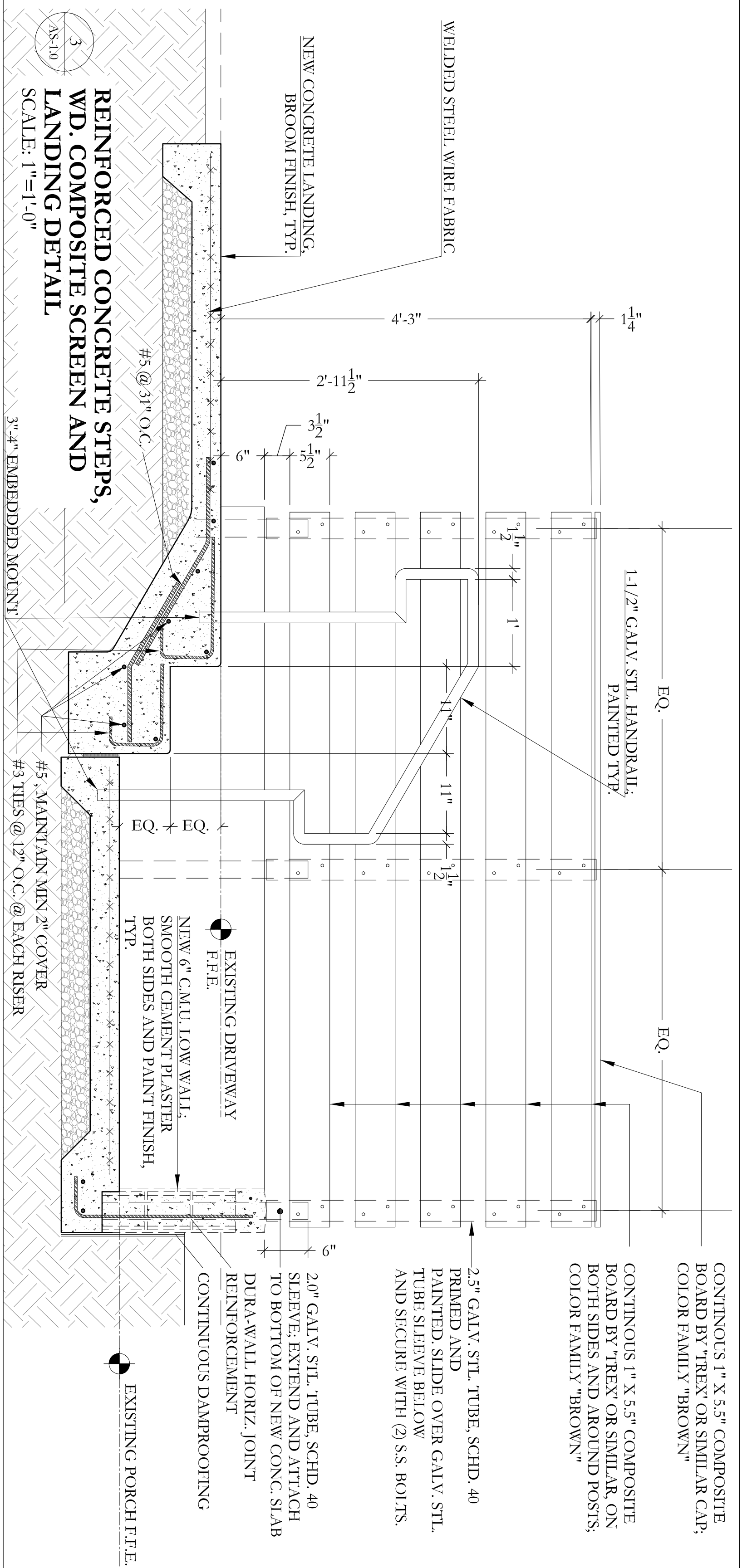
S 90°00'00" E (ASSUMED) 200.00' (P)
S 90°00'00" E (ASSUMED) 199.94' (S) BEARING BASE

NEW CONC. STEPS AND SLOPING SIDEWALK,
1:29 SLOPE, SEE DETAILS ON THIS SHEET

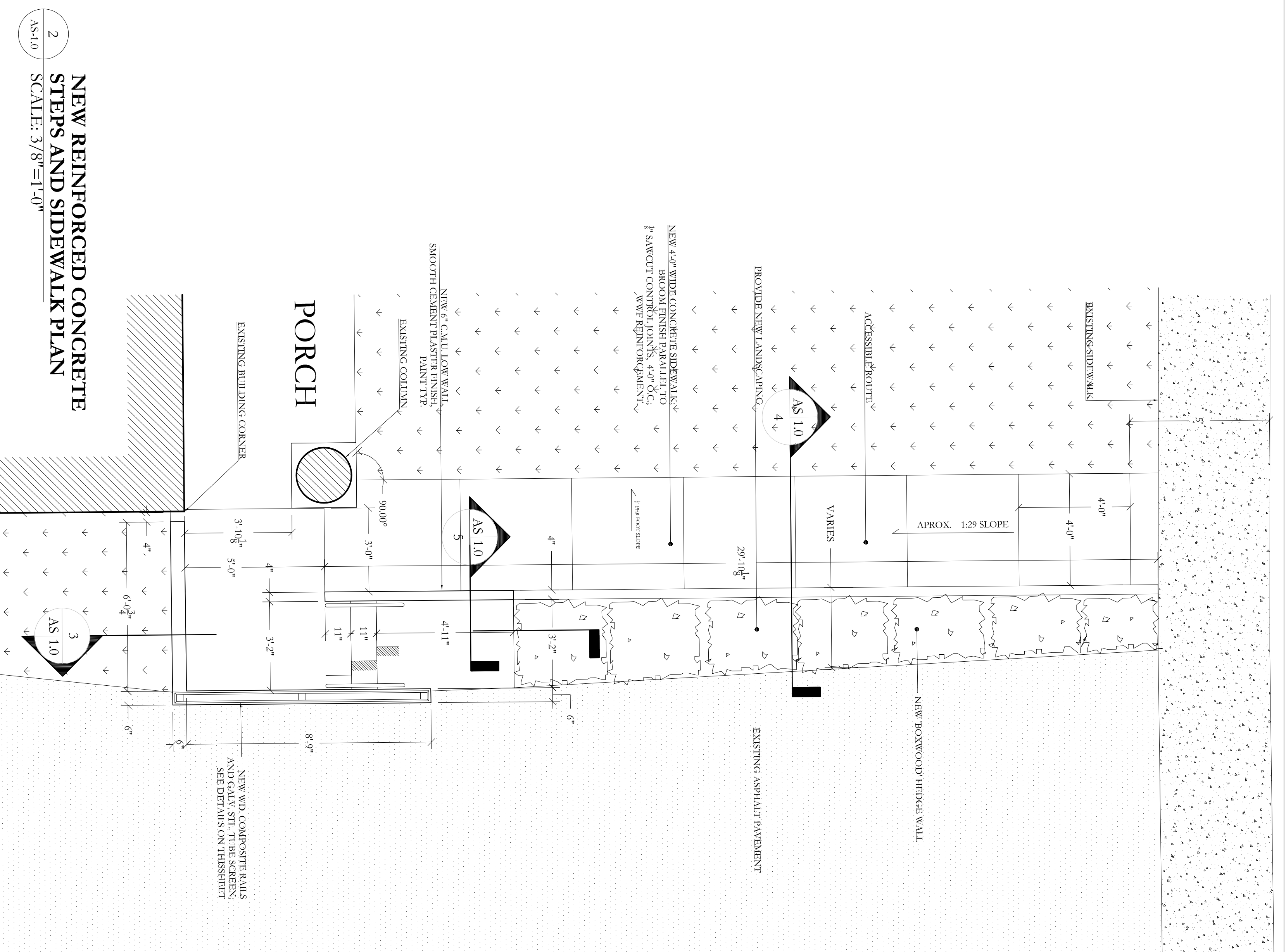
N 00°06'51" E 129.62' (S)
NORTH 130' (P)
LORENE STREET



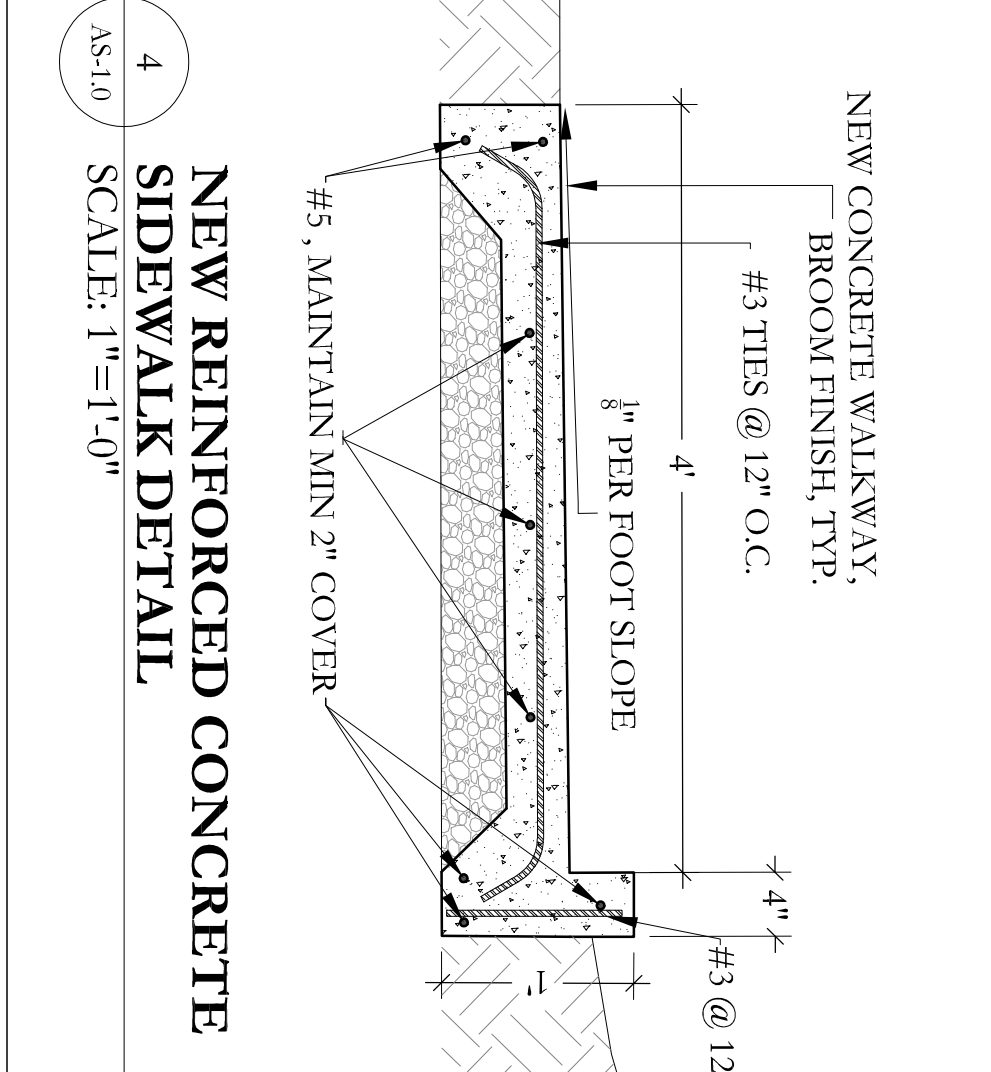
1 SITE PLAN
SCALE: 1/16"=1'-0"



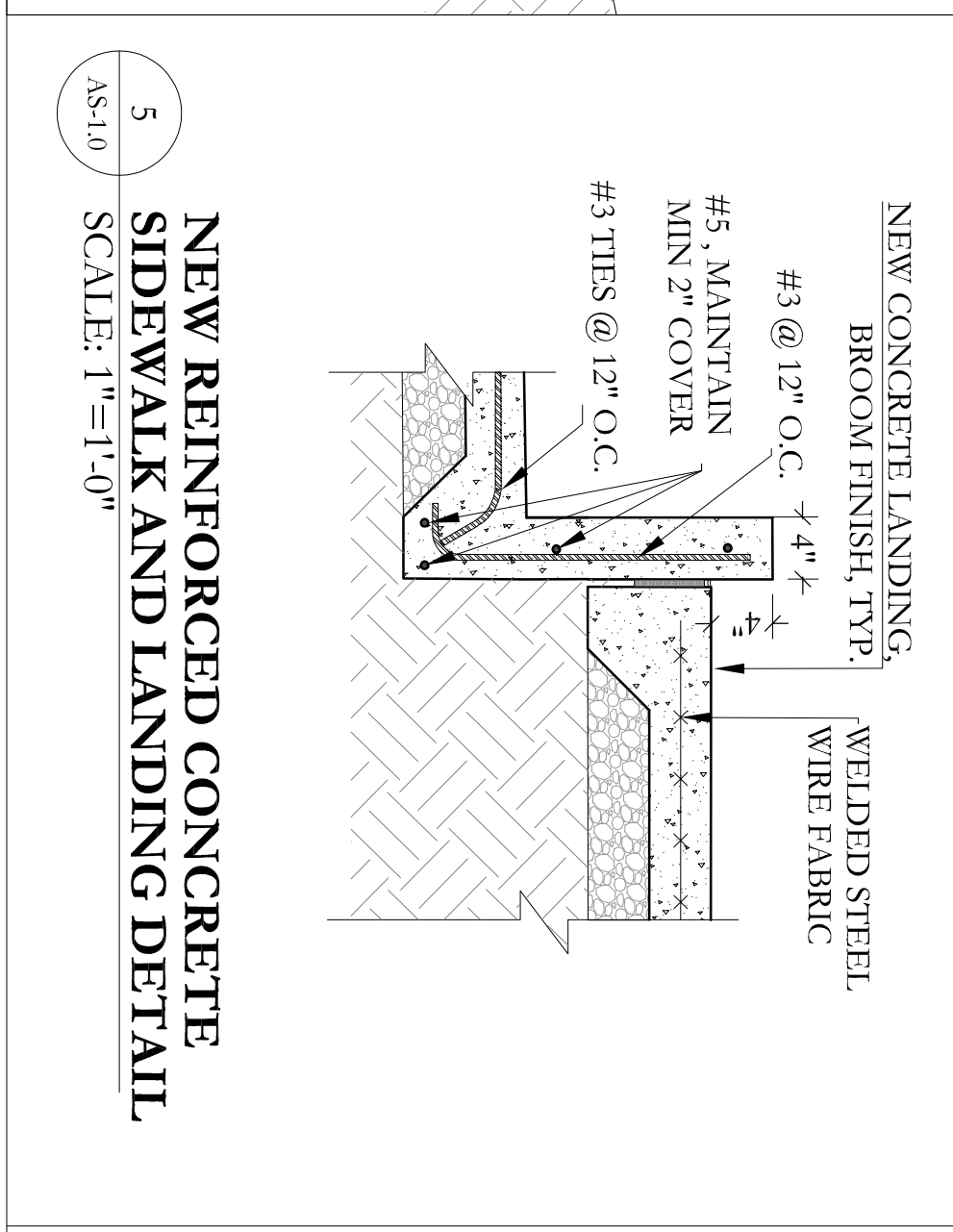
3 REINFORCED CONCRETE STEPS,
WD. COMPOSITE SCREEN AND
LANDING DETAIL
SCALE: 1"=1'-0"



2 NEW REINFORCED CONCRETE
STEPS AND SIDEWALK PLAN
SCALE: 3/8"=1'-0"



4 NEW REINFORCED CONCRETE
SIDEWALK DETAIL
SCALE: 1"=1'-0"



5 NEW REINFORCED CONCRETE
SIDEWALK AND LANDING DETAIL
SCALE: 1"=1'-0"

<p>Drawn By: LER & RP</p> <p>AS-1.0</p>	<p>DATE: May 25, 2017</p> <p>PROJECT: FSU Delta Zeta House</p>	<p>4M Project #AV1016-033</p>	<p>4M Design Group PA</p> <p>Architecture Preservation Sustainability</p> <p>322 Beard Street Tallahassee, FL 32303 850.422.3676 850.421.3676 fax Architecture Reg. AA26001466</p>
	<p>DESCRIPTION: PERMIT RESPONSE</p> <p>DATE: 5/16/2017</p>		