

A/C SYSTEM SCHEDULE															
AREA	SYS NO	MFR	COND. MODEL	A/H MODEL	HEAT CAP. TOTAL	SENSIBLE	COMP. NO.	R.A.	CONDENS. NO.	HP	VOLT	PHASE	SEER	TONS	
RES	1	CARRIER	24ABR136	FBCNCF03	10 KW	33,800	24,900	1	14.1	1	14	230	1	20.5	13
RES	2	CARRIER	24ABR136	FBCNCF03	10 KW	33,800	24,900	1	14.1	1	14	230	1	20.5	13
RES	3	CARRIER	24ABR136	FBCNCF03	10 KW	33,800	24,900	1	14.1	1	14	230	1	20.5	13
RES	4	CARRIER	24ABR136	FBCNCF03	10 KW	33,800	24,900	1	14.1	1	14	230	1	20.5	13

FAN SCHEDULE													
TAG	SERVICE AREA	MANUE	MODEL	CONFIG.	CFM	FSP (W/G)	SONES	RPM	DRIVE	VOLT	WEIGHT	OPENING	CONTROL
EF	BATHROOM	BROAN	657	CEILING	70	110"	4.0	1150	DIRECT	120	12.5	14.25x5.75x8.25	LIGHT INTERLOCK
EF	BATHROOM	BROAN	657	CEILING	70	110"	4.0	1150	DIRECT	120	12.5	14.25x5.75x8.25	LIGHT INTERLOCK

SUPPLY AIR GRILLE SCHEDULE													
TAG	MANUF. & MODEL	FACE SIZE	NECK SIZE	MATERIAL	FRAME	FINISH	DAMPER	THROW	NC	CFM RANGE	NOTES		
A	TITUS / TDCA-AA	14 X 6	SEE SCH.	ALUM.	NOTE #3	WHITE	NOTE #3	4-WAY	MAX. 30	SEE SCH.			
B	TITUS / TDCA-AA	10 X 10	SEE SCH.	ALUM.	NOTE #3	WHITE	NOTE #3	4-WAY	MAX. 30	SEE SCH.			
C	TITUS / TDCA-AA	16 X 16	SEE SCH.	ALUM.	NOTE #3	WHITE	NOTE #3	4-WAY	MAX. 30	SEE SCH.			
D	TITUS / TDCA-AA	12 X 8	SEE SCH.	ALUM.	NOTE #3	WHITE	NOTE #3	4-WAY	MAX. 30	SEE SCH.			
E	TITUS / TDCA-AA	10 X 6	SEE SCH.	ALUM.	NOTE #3	WHITE	NOTE #3	4-WAY	MAX. 30	SEE SCH.			

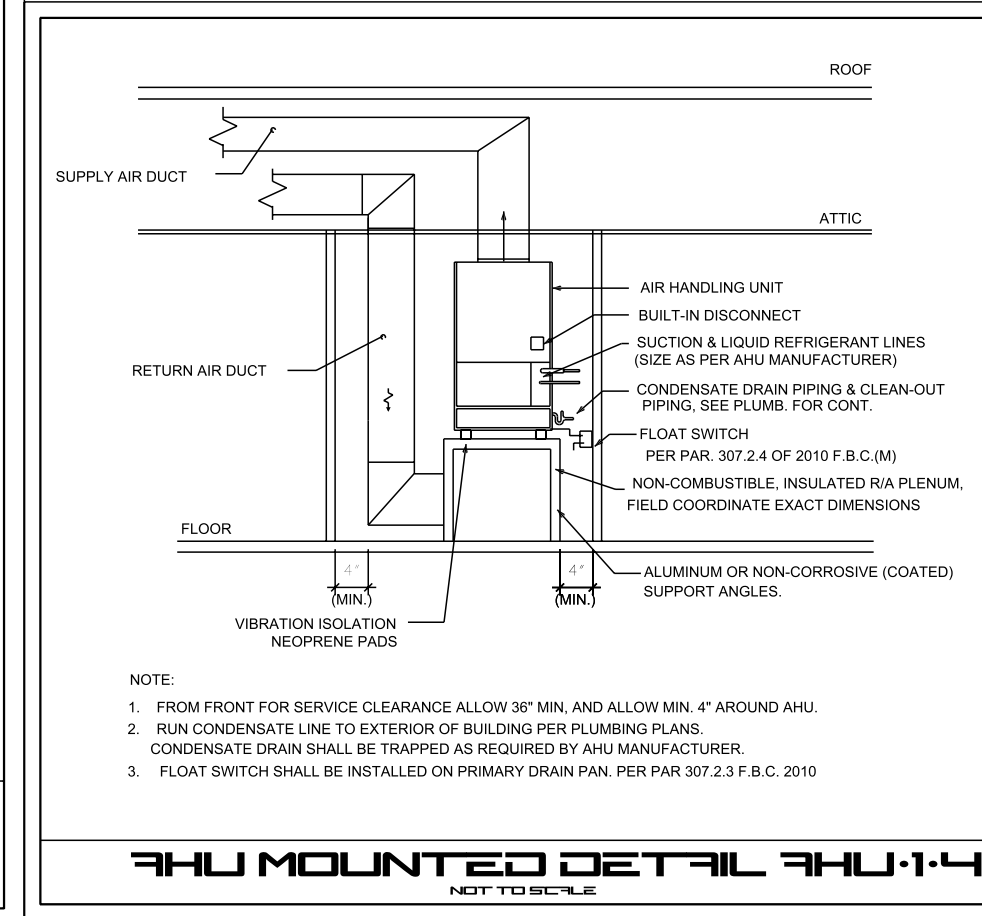
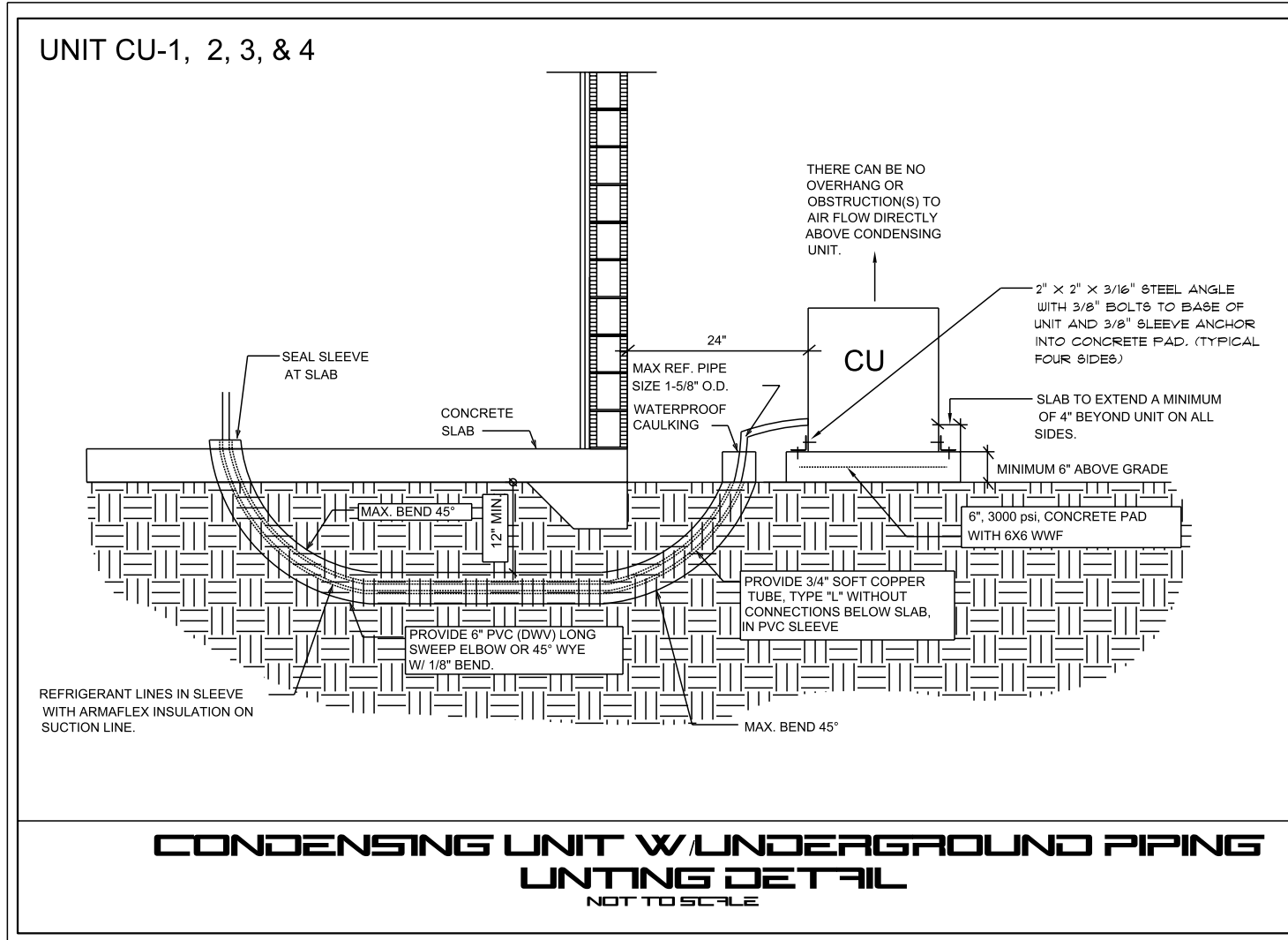
EQUIVALENT MANUFACTURER: METALAIR, PRICE, CARNES, T & B, NAILOR

**GENERAL NOTES:**

- PROVIDE SPIN-IN COLLAR AT TRUNK TO FLEX DUCT CONNECTION.
- PROVIDE TYPICAL 4-WAY DIFFUSION, 2-WAY OR 3-WAY ONLY WHERE INDICATED ON PLAN.
- REFER TO ARCHITECT ENGINEER PLAN FOR CEILING TYPE.
- CONTRACTOR TO COORDINATE FINAL SELECTION WITH OWNER.
- FLEX DUCT SIZE TO BE SAME AS DIFFUSER NECK SIZE.
- PROVIDE INSULATION ON THE BACK OF DIFFUSER IF IN UNCONDITIONED SPACE.
- PROVIDE END CAP FOR LINEAR DIFFUSERS.
- ADJUST LENGTHS TO LINE UP WITH INTERIOR DESIGNER'S PLANS.
- PROVIDE INSULATED PLENUM.

FLEX SCHEDULE	
FACE SIZE	CFM RANGE
6" x 6"	50 - 125 CFM
8" x 8"	130 - 200 CFM
10" x 10"	205 - 320 CFM
12" x 12"	335 - 450 CFM
14" x 14"	455 - 600 CFM
16" x 16"	605 - 700 CFM

CONTRACTOR SHALL VERIFY WITH OWNER PRIOR TO ANY PURCHASING OR INSTALLATION, IF A BUILDING STANDARD HAS TO BE FOLLOWED REGARDING A SPECIFIC MODEL OR MANUFACTURER AND SHALL BRING ANY DISCREPANCY TO THE ATTENTION OF THE ENGINEER.



RETURN AIR GRILLE SCHEDULE													
TAG	MANUF. & MODEL	FACE SIZE	NECK SIZE	MATERIAL	FRAME	FINISH	DAMPER	THROW	NC	CFM RANGE	NOTES		
AA	TITUS / TDCA-AA	24 X 24	SEE SCH.	ALUM.	NOTE #3	WHITE	NOTE #3	4-WAY	MAX. 30	SEE SCH.	3, 4		
BB	TITUS / TDCA-AA	20 X 20	SEE SCH.	ALUM.	NOTE #3	WHITE	NOTE #3	4-WAY	MAX. 30	SEE SCH.	3, 4		
CC													

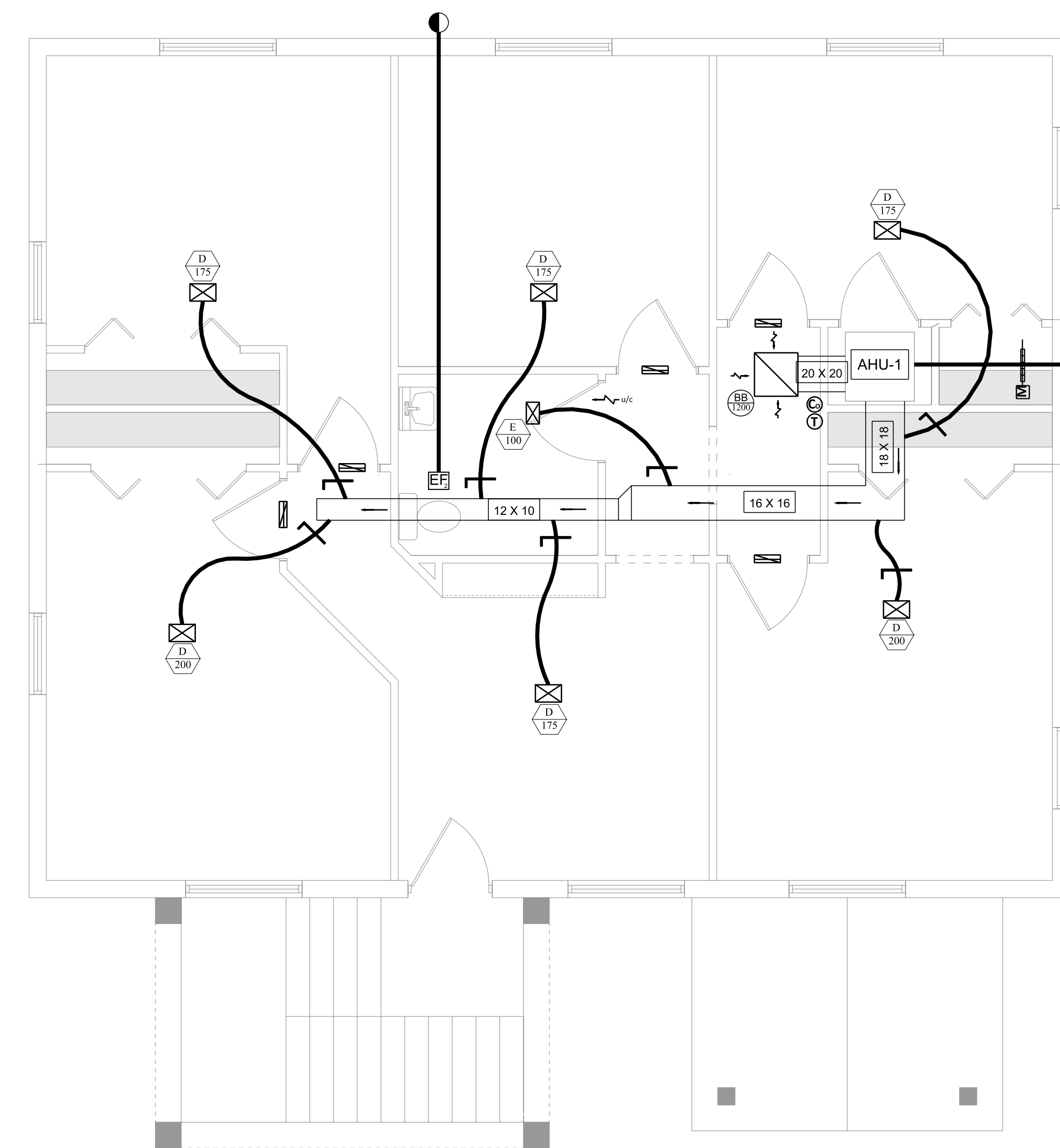
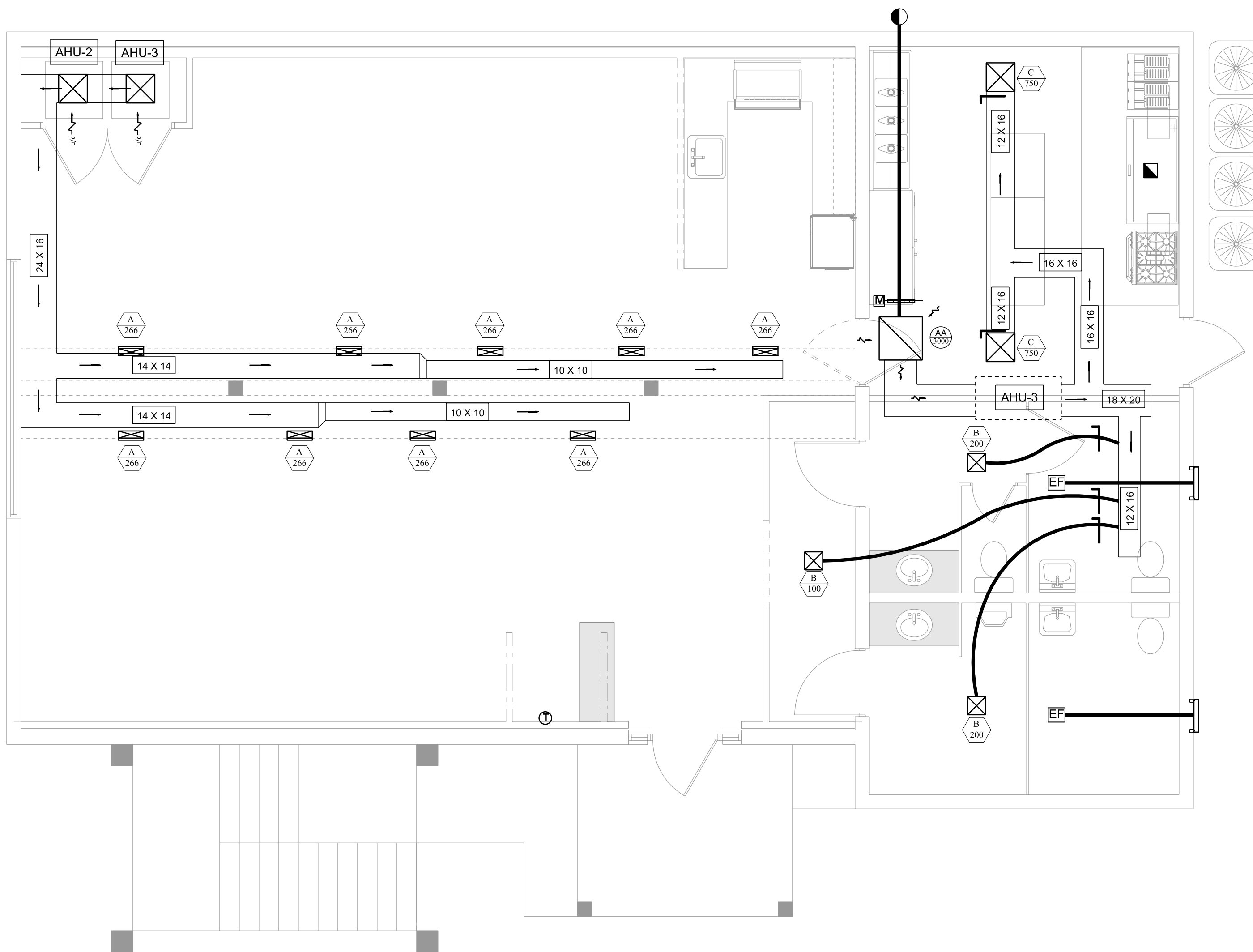
EQUIVALENT MANUFACTURER: METALAIR, PRICE, CARNES, T & B, NAILOR

**GENERAL NOTES:**

- PROVIDE SPIN-IN COLLAR AT TRUNK TO FLEX DUCT CONNECTION.
- PROVIDE TYPICAL 4-WAY DIFFUSION, 2-WAY OR 3-WAY ONLY WHERE INDICATED ON PLAN.
- REFER TO ARCHITECT ENGINEER PLAN FOR CEILING TYPE.
- CONTRACTOR TO COORDINATE FINAL SELECTION WITH OWNER.
- FLEX DUCT SIZE TO BE SAME AS DIFFUSER NECK SIZE.
- PROVIDE INSULATION ON THE BACK OF DIFFUSER IF IN UNCONDITIONED SPACE.
- PROVIDE END CAP FOR LINEAR DIFFUSERS.
- ADJUST LENGTHS TO LINE UP WITH INTERIOR DESIGNER'S PLANS.
- PROVIDE INSULATED PLENUM.

FLEX SCHEDULE	
FACE SIZE	CFM RANGE
6" x 6"	50 - 125 CFM
8" x 8"	130 - 200 CFM
10" x 10"	205 - 320 CFM
12" x 12"	335 - 450 CFM
14" x 14"	455 - 600 CFM
16" x 16"	605 - 700 CFM

CONTRACTOR SHALL VERIFY WITH OWNER PRIOR TO ANY PURCHASING OR INSTALLATION, IF A BUILDING STANDARD HAS TO BE FOLLOWED REGARDING A SPECIFIC MODEL OR MANUFACTURER AND SHALL BRING ANY DISCREPANCY TO THE ATTENTION OF THE ENGINEER.



**1ST FLOOR HVAC PLAN**  
SCALE 1/4" = 1'-0"

**2ND FLOOR HVAC PLAN**  
SCALE 1/4" = 1'-0"



WRITTEN DIMENSIONS ON THESE DOCUMENTS SHALL TAKE PRECEDENCE OVER ALL SCALED DIMENSIONS. CONTRACTORS ARE TO VERIFY AND BE RESPONSIBLE FOR ALL DIMENSIONS, SETBACKS & CONDITIONS AT THE JOB SITE. ENGINEERS DESIGNERS SHALL BE NOTIFIED OF ANY VARIATIONS IN DIMENSIONS, SETBACKS AND/OR CONDITIONS BEFORE SAID CONSTRUCTION IS AUTHORIZED. SHOP DRAWINGS SHALL BE MARKED "REVIEWED BY THE ENGINEER/DESIGNER" BEFORE FABRICATION OF PARTS IS APPROVED.



**SHEET DETAILS**  
-1ST FLOOR HVAC LAYOUT  
-2ND FLOOR HVAC LAYOUT

REVISION DATE:

**CLIENT:**  
MCHARDY INVESTMENTS  
432 SE MLK BLVD  
STUART, FL 34994  
PIN# 04-38-41-015-009-0010-0

**PROJECT:**  
M.C.'S GRILLE  
&  
OFFICE

**DRAWN**  
S.M.K.  
**CHECKED**  
JK  
**DATE**  
April 18, 2014  
**SCALE**  
AS NOTED  
**JOB NO.**  
MCH-2013-48

**SHEET**  
M-2